



THE DISPLAY CHOICE  
OF PROFESSIONALS™

L-W22C, L-W24C & L-W27C LED-Backlit Display

[www.agneovo.com](http://www.agneovo.com)

# User Manual

# TABLE OF CONTENTS

Safety Information -----	1
Important Safety Instruction -----	2
Special Notice -----	2
Connection -----	3
Stand Assembly Instruction -----	3
Front Panel Controls -----	4
Power Switch -----	4
Power Indicator -----	4
Operate Explanation -----	5
OSD Menu -----	5
Specification -----	7
Display Mode -----	8

# Safety Information

## CE Declaration of Conformity

We declare under our responsibility that the product is in conformity with the following standards:

- EN60950-1:2006+A11:2009+A1:2010+A12:2011+A2:2013 (Safety requirement of Information Technology Equipment).
- EN55032:2012 (Radio Disturbance requirement of Information Technology Equipment).
- EN55024:2010 (Immunity requirement of Information Technology Equipment).
- EN61000-3-2:2006 +A1:2009+A2:2009 (Limits for Harmonic Current Emission).
- EN61000-3-3:2013 (Limitation of Voltage Fluctuation and Flicker)
- EN61000-3-2:2014 (Limits for Harmonic Current Emissions)
- EN 50581:2012 (Technical documentation for the assessment of electrical and electronic products with respect to the restriction of hazardous substances)
- EN 50564:2011 (Electrical and electronic household and office equipment — Measurement of low power consumption) following provisions of directives applicable.
- 2014/35/EU (Low Voltage Directive).
- 2004/108/EC (EMC Directive).
- 2009/125/EC (ErP, Energy-related Product Directive, EC No. 1275/2008 and 642/2009 Implementing)
- 2011/65/EU (RoHS Directive) and is produced by a manufacturing organization on ISO9000 level.
- 2014/30/EU (EMC Directive).

## Waste Electrical and Electronic Equipment (WEEE)

Information for users applicable in European Union countries.



The symbol on the product or its packaging signifies that this product has to be disposed separately from ordinary household wastes at its end of life. Please kindly be aware that this is your responsibility to dispose electronic equipment at recycling centers so as to help conserve natural resources. Each country in the European Union should have its collection centers for electrical and electronic equipment recycling. For information about your recycling drop off

area, please contact your local related electrical and electronic equipment waste management authority or the retailer where you bought the product.

# Important Safety Instruction

1. Read these instructions thoroughly and keep this user manual for future use.
2. Do not use the product near water. Never spill liquid of any kind of the products. Clean LED monitor when power off. Never clean it with liquid cleansess or liquefier. Better use clean wet cloth carefully.
3. Do not place the product on an unstable cart, stand or table. Doing so may cause the product to fall, which can seriously damage it.
4. To ensure reliable operation, never block these ventilation slots by placing the product on a bed, rug or similar surface; this product should never be placed near or over a radiator or heat register; or installed in any enclosure that prevents proper ventilation.
5. Do not place any object on the adapter. Do not place this product where persons could walk on the adapter.
6. Never push objects of any kind through the ventilation slots at the back of the product. To do so could risk fire or electronic shock.
7. Do not attempt to service this product by yourself. Opening or removing covers may expose you to dangerous voltage that could cause fire or electronic shock. Refer all servicing needs to authorized service personnel.
8. Unplug this product from the wall outlet and contact authorized service personnel under the following conditions:
  - a. When the adapter or plug is damaged or frayed.
  - b. If a liquid has been spilled into or on the product.
  - c. If the product has been rained or spilled by water.
  - d. If the product has been dropped or the cabinet has been damaged.
  - e. If the product does not operate normally when operating instructions are followed, and product shows to be maintained.
9. The socket-outlet shall be installed near the equipment and shall be easily accessible.

## Special Notice

Only under normal condition can the quality of LED products be assured during operation. Normal condition as following:

Temperature:  $20\pm 15$

Moisture:  $65\pm 20$

Display image: continuously changing image. (Not freezing image)

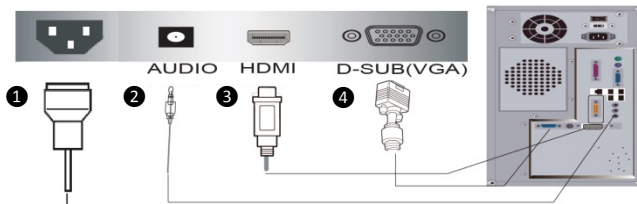
For the LED products, the phenomenon of image stagnation may appear when display the freezing image for a certain long time. All the display products including LED may have this kind of image stagnation, and this is not a kind of defect. In order to avoid the phenomenon of image stagnation, we suggest that the screen protection program be set when your PC or system is spare.

# Connection

1. Turn off computer and unplug power cord.
2. To connect signal cable with 15pin into VGA connector on the back of monitor, and to be sure to tighten switches on both ends of signal cable.
3. To plug PC and monitor adapter to the nearest socket.
4. Turn on PC and monitor, image possibility shows successful installation. If not , please double check all the connections.

## NOTES:

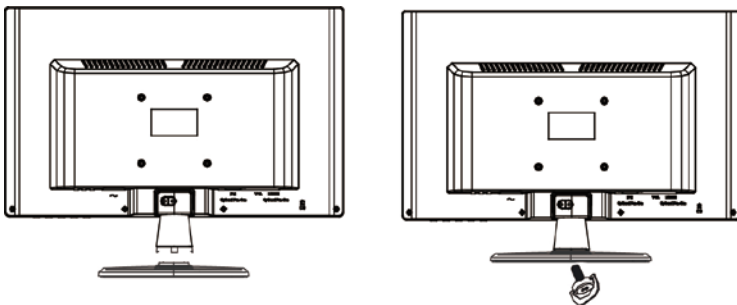
1. To connect signal cable and plug adapter to be assure monitor safety on process of installation.
2. To avoid monitor damaged, please handle the centre part of front cover while it installation.



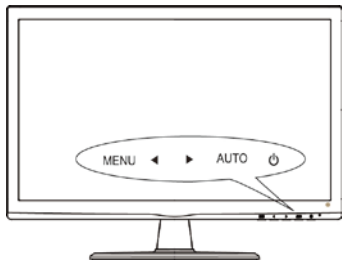
## MONITOR INPUT CONNECTIONS:

1. AC power input
2. AUDIO input
3. HDMI signal input
4. VGA signal input

# Stand Assembly Instruction



# Front Panel Controls



1	MENU	Press it to open the OSD MENU, to select MENU options when the OSD MENU is displayed.
2	◀	Hot key to select input signal Down selection button
3	▶	Hot key to adjust value Up selection button
4	AUTO	Hot key to automatically optimize positions, phase and clock when OSD is not shown. To exit OSD MENU when OSD is shown.
5	⏻	Power on or off

# Power Switch

Press this button to turn on or off the monitor.

Note: It will not cut off power supply. But to unplug pin from the socket.

# Power Indicator

LED power indicator

LED-On Normal;

LED flicker: Power Saving;

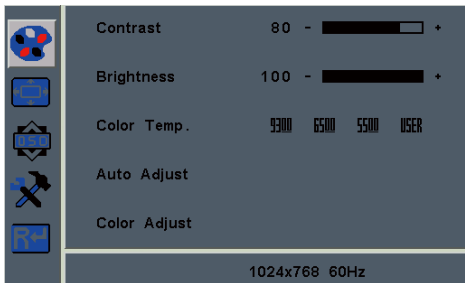
LED-Off: Power Off.

# Operate Explanation



Your LCD has been adjusted to its optimal status before shipment. You can also adjust the image in accordance with the following illustrations and steps.





- Press the “MENU” button to start the OSD feature.
- Click the “◀” or “▶” to select the function to be adjusted.
- Click the “MENU” button to access into the function to be adjusted.
- Click “◀” or “▶” button to change the current setting of the function.
- To exit OSD MENU or go back to the previous action by “EXIT”.
- To repeat above steps for changing the setting of the other function.

## OSD Menu



Source Resolution and Frequency

Primary Directory	Secondary Directory	Description
	Contrast	Adjust the contrast of the image
	Brightness	Adjust the brightness of the screen
	Color Temp	Set up the color Temp. to be 9300K/6500K/5500K/USER USER to adjust red/green/blue
	Auto Adjust	Set up to adjust clock, phase and position automatically
	Color Adjust	Adjust the color of the screen automatically
	H.Position	Move the image left and right on the screen
	V.Position	Move the image up and down on the screen
	Clock	Adjust the clock pulse of the image
	Phase	Adjust the focus of image

OSD Menu  	Language	
		Select the language
	OSD H. Pos.	Move the OSD left and right on the screen
	OSD V. Pos.	Move the OSD up and down on the screen
	OSD Timer	Adjust OSD display time setting
	Transparency	Adjust OSD Transparency
Others  	Mode	Select PC/GAME/MOVIE display mode
	Audio Volume	Adjust audio volume
	Signal Source	Select VGA/HDMI signal
	Aspect Ratio	Select the display mode: 16:9/AUTO/4:3
	Active Contrast	Select DCR Mode on or off
Reset 	Restore to factory settings	



# Specification

	L-W22C	L-W24C	L-W27C
Panel Size	21.5"	23.6"	27"
Max resolution	1920x1080/WXGA	1920x1080/WXGA	1920x1080/WXGA
Display Color	16.7M	16.7M	16.7M
Pixel Pitch	0.248mm x 0.248mm	0.2715mm x 0.2715mm	0.311mm x 0.311mm
Brightness	250cd/m <sup>2</sup>	250cd/m <sup>2</sup>	250cd/m <sup>2</sup>
Contrast Ratio	30,000,000:1 (DCR)	30,000,000:1 (DCR)	30,000,000:1 (DCR)
Response time	3ms	3ms	3ms
Viewing Angle	170°(H) / 160°(V)	170°(H) / 160°(V)	170°(H) / 160°(V)
Display Area	476.06mm (H) x 267.78mm (V)	521.3 mm (H) x 293.2 mm (V)	597.8 mm (H) x 336.3 mm (V)
Signal Mode	Video Signal: 0.7Vpp 75Ω	Video Signal: 0.7Vpp 75Ω, HDMI	Video Signal: 0.7Vpp 75Ω, HDMI
Sync. Frequency	Horizontal 30kHz-80kHz/Vertical 55Hz-76Hz	Horizontal 30kHz-80kHz/Vertical 55Hz-76Hz	Horizontal 30kHz-80kHz/Vertical 55Hz-76Hz
Power Supply	AC100-240V, 1.0A, 50/60 HZ	AC100-240V, 1.0A, 50/60 HZ	AC100-240V, 1.0A, 50/60 HZ
Speaker	2W x 2	2W x 2	2W x 2
Power Consumption	25W (Max)	30W (Max)	35W (Max)
Dimension	514.4 (W) x 378.6 (H) x 190 mm (D)	560.8 (W) x 399.3 (H) x 218.5 mm (D)	646.6 (W) x 444.7 (H) x 218.5 mm (D)
Net Weight	3.15kg	4.75kg	5.53kg

# Display Mode

Display Mode		Hori.sync (kHz)	Vert.sync. (Hz)	Pixel.Clock (MHz)	Sync.Polarity (H/V)
VGA	640 x 480	31.469	59.940	25.175	-/-
		37.861	72.809	31.500	-/-
		37.500	75.000	31.500	-/-
SVGA	800 x 600	35.156	56.250	36.000	+/+
		37.879	60.317	40.000	+/+
		48.077	72.188	50.000	+/+
		46.875	75.000	49.500	+/+
XGA	1024 x 768	48.363	60.004	65.000	-/-
		56.476	70.069	75.000	-/-
		60.023	75.029	78.750	+/+
SXGA	1280 x 1024	63.981	60.020	108.000	+/+
		79.976	75.025	135.000	+/+
WXGA+	1440 x 900	55.935	59.887	106.5	-/+
WSXGA+	1680 x 1050	65.29	59.954	146.25	-/+
Full HD	1920 x 1080	67.5	60.1	172	-/+

Company Address: 5F-1, No. 3-1, Park Street, Nangang District, Taipei, 11503, Taiwan.