



# LCD Monitor User Manual

**I2272PWHUT/I2472PWHUT (LED Backlight)**

|  |    |
|--|----|
| Safety.....                                    | 4  |
| National Conventions.....                      | 4  |
| Power .....                                    | 5  |
| Installation.....                              | 6  |
| Cleaning .....                                 | 8  |
| Other.....                                     | 9  |
| Setup .....                                    | 10 |
| Content of the Box .....                       | 10 |
| Setup Stand .....                              | 11 |
| Adjusting Viewing Angle.....                   | 12 |
| Connecting the Monitor.....                    | 13 |
| Multi-Touch Screen .....                       | 14 |
| Wall Mounting .....                            | 15 |
| Adjusting .....                                | 16 |
| Setting Optimal Resolution .....               | 16 |
| Windows Vista .....                            | 16 |
| Windows XP .....                               | 18 |
| Windows ME/2000.....                           | 19 |
| Windows 7 .....                                | 20 |
| Windows 8 .....                                | 23 |
| Hotkeys.....                                   | 25 |
| Using "MHL(Mobile High-Definition Link)" ..... | 27 |
| OSD Setting.....                               | 28 |
| Luminance .....                                | 29 |
| Image Setup .....                              | 30 |
| Color Setup.....                               | 31 |
| Picture Boost .....                            | 32 |
| OSD Setup .....                                | 33 |
| Extra .....                                    | 34 |
| Exit .....                                     | 35 |
| LED Indicator .....                            | 36 |
| Driver .....                                   | 37 |
| Monitor Driver .....                           | 37 |
| Windows 2000 .....                             | 37 |
| Windows ME.....                                | 37 |
| Windows XP .....                               | 38 |
| Windows Vista .....                            | 41 |
| Windows 7 .....                                | 43 |
| Windows 8 .....                                | 47 |
| i-Menu.....                                    | 51 |
| e-Saver .....                                  | 52 |
| Screen+ .....                                  | 53 |
| Troubleshoot .....                             | 54 |
| Specification.....                             | 56 |
| General Specification.....                     | 56 |
| Preset Display Modes.....                      | 59 |

|   |    |
|---|----|
| Pin Assignments .....   | 60 |
| Plug and Play.....  | 61 |
| Regulation.....   | 62 |
| FCC Notice .....  | 62 |
| WEEE Declaration .....  | 63 |
| WEEE Declaration for India .....                                      | 63 |
| Service.....  | 64 |
| Warranty Statement for Europe.....                                    | 64 |
| Warranty Statement for Middle East and Africa (MEA) .....             | 66 |
| AOC International (Europe) B.V.....                                   | 68 |
| Warranty Statement for North & South America (excluding Brazil) ..... | 69 |

# Safety

## National Conventions

The following subsections describe notational conventions used in this document.

### Notes, Cautions, and Warnings

Throughout this guide, blocks of text may be accompanied by an icon and printed in bold type or in italic type. These blocks are notes, cautions, and warnings, and they are used as follows:



**NOTE:** A NOTE indicates important information that helps you make better use of your computer system.





**CAUTION:** A CAUTION indicates either potential damage to hardware or loss of data and tells you how to avoid the problem.





**WARNING:** A WARNING indicates the potential for bodily harm and tells you how to avoid the problem. Some warnings may appear in alternate formats and may be unaccompanied by an icon. In such cases, the specific presentation of the warning is mandated by regulatory authority.


# Power


 The monitor should be operated only from the type of power source indicated on the label. If you are not sure of the type of power supplied to your home, consult your dealer or local power company.


 The monitor is equipped with a three-pronged grounded plug, a plug with a third (grounding) pin. This plug will fit only into a grounded power outlet as a safety feature. If your outlet does not accommodate the three-wire plug, have an electrician install the correct outlet, or use an adapter to ground the appliance safely. Do not defeat the safety purpose of the grounded plug.

 Unplug the unit during a lightning storm or when it will not be used for long periods of time. This will protect the monitor from damage due to power surges.

 Do not overload power strips and extension cords. Overloading can result in fire or electric shock.

 To ensure satisfactory operation, use the monitor only with UL listed computers which have appropriate configured receptacles marked between 19V, 3.42A

 The wall socket shall be installed near the equipment and shall be easily accessible.

 For use only with the attached power adapter (Output 19Vdc) which have UL,CSA listed license (Only for monitors with power adapter).

Manufacturers:

- 1) TPV ELECTRONICS(FUJIAN) CO., LTD model: ADPC1965
- 2) SHENZHEN HONOR ELECTRONICS CO., LTD. / model: ADS-65LSI-19-1 19065G

# Installation

**!** Do not place the monitor on an unstable cart, stand, tripod, bracket, or table. If the monitor falls, it can injure a person and cause serious damage to this product. Use only a cart, stand, tripod, bracket, or table recommended by the manufacturer or sold with this product. Follow the manufacturer's instructions when installing the product and use mounting accessories recommended by the manufacturer. A product and cart combination should be moved with care.

**!** Never push any object into the slot on the monitor cabinet. It could damage circuit parts causing a fire or electric shock. Never spill liquids on the monitor.

**!** Do not place the front of the product on the floor.

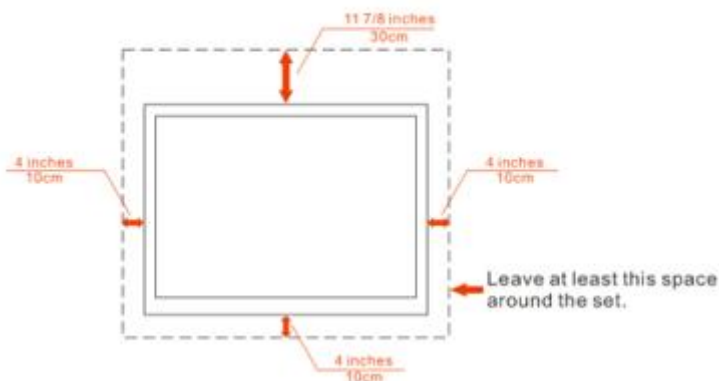
**!** If you mount the monitor on a wall or shelf, use a mounting kit approved by the manufacturer and follow the kit instructions.

**!** Remark: Suitable for entertainment purposes at controlled luminous environments, to avoid disturbing reflections from the screen.

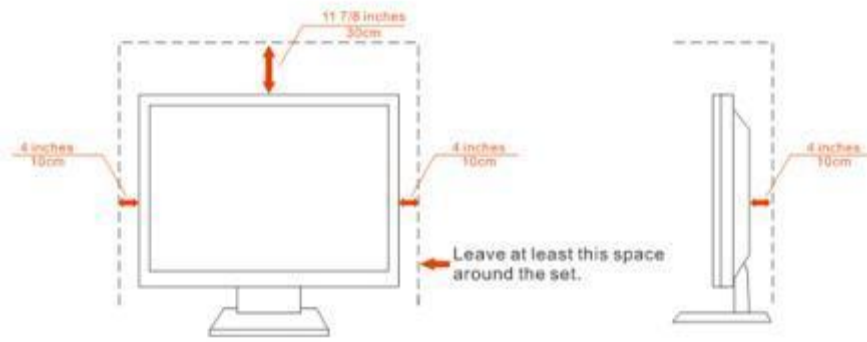
**!** Leave some space around the monitor as shown below. Otherwise, air-circulation may be inadequate hence overheating may cause a fire or damage to the monitor.

See below the recommended ventilation areas around the monitor when the monitor is installed on the wall or on the stand:

## Installed on the wall



## Installed with stand



## Cleaning

⚠️ Clean the cabinet regularly with cloth. You can use soft-detergent to wipe out the stain, instead of strong-detergent which will cauterize the product cabinet.


⚠️ When cleaning, make sure no detergent is leaked into the product. The cleaning cloth should not be too rough as it will scratch the screen surface.


⚠️ Please disconnect the power cord before cleaning the product.







## Other

 If the product is emitting a strange smell, sound or smoke, disconnect the power plug IMMEDIATELY and contact a Service Center.

 Make sure that the ventilating openings are not blocked by a table or curtain.

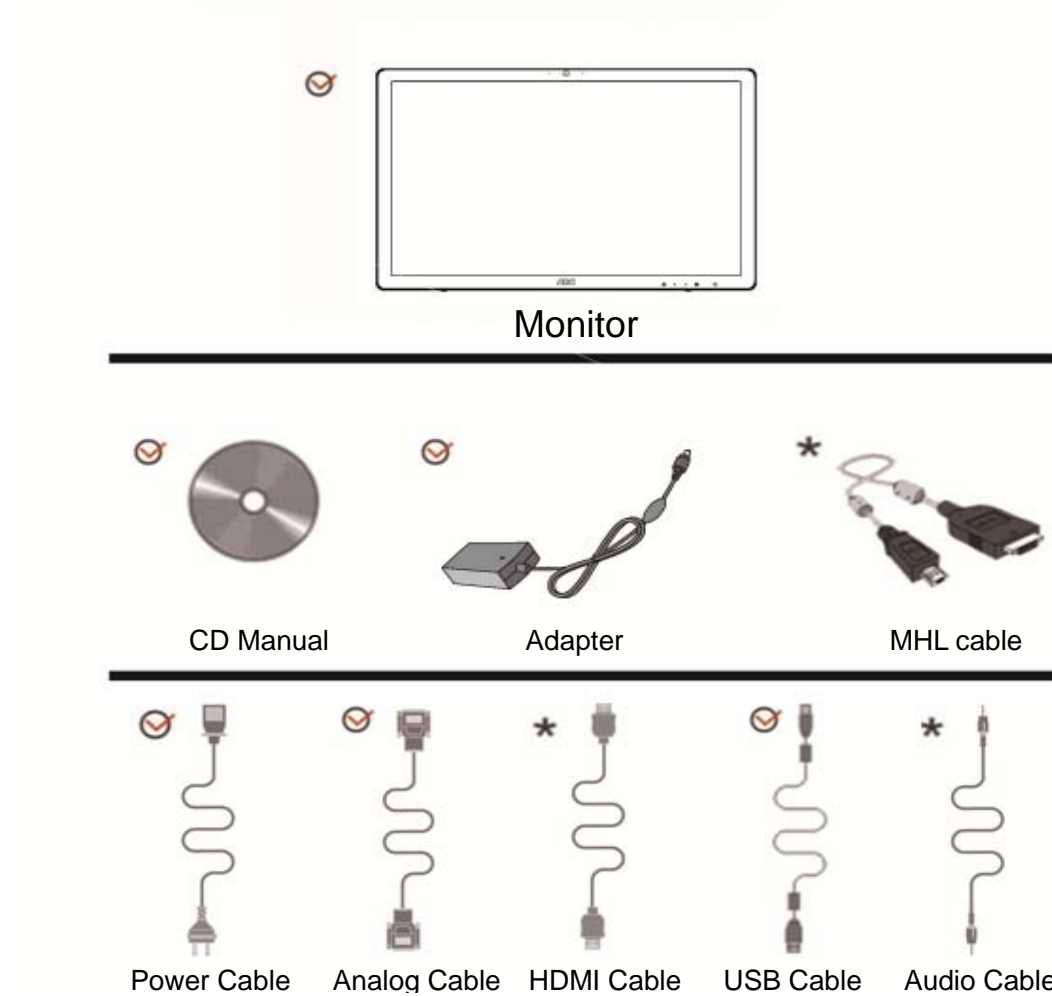
 Do not engage the LCD monitor in severe vibration or high impact conditions during operation.

 Do not knock or drop the monitor during operation or transportation.

 For display with glossy bezel the user should consider the placement of the display as the bezel may cause disturbing reflections from surrounding light and bright surfaces.

# Setup

## Content of the Box

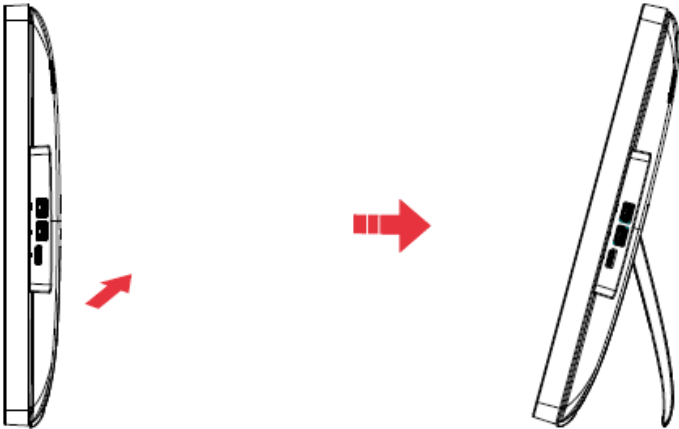


\* Not all signal cables (Analog , Audio, MHL and HDMI cables) will be provided for all countries and regions. Please check with the local dealer or AOC branch office for confirmation.

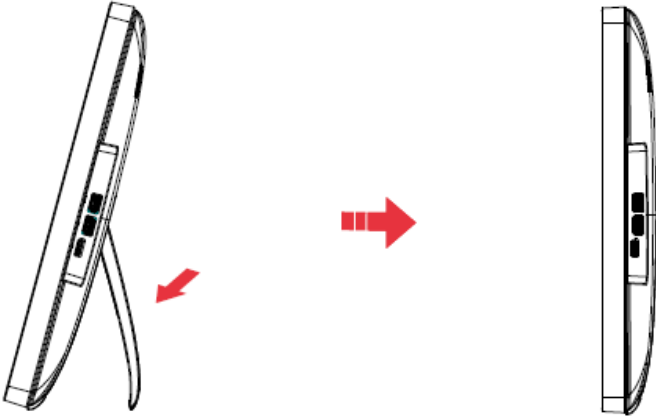
# Setup Stand

Please setup or remove the Stand following the steps as below.

## Setup



## Remove:

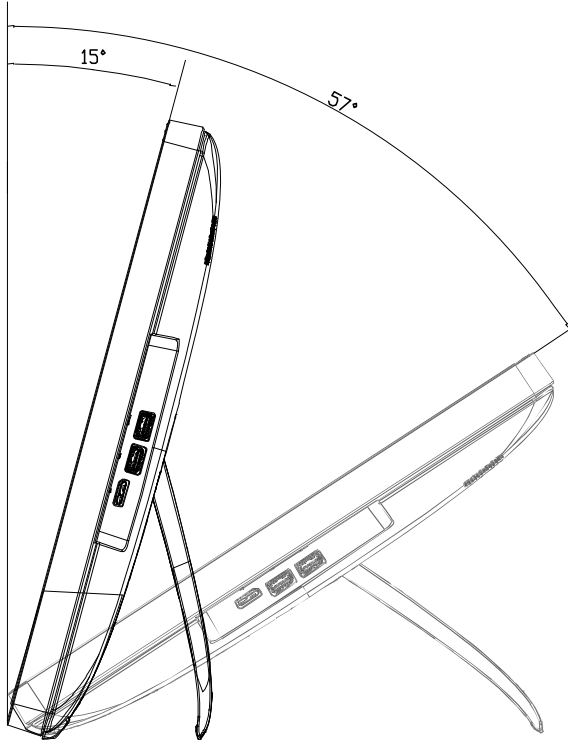


## Adjusting Viewing Angle

For optimal viewing it is recommended to look at the full face of the monitor, then adjust the monitor's angle to your own preference.

Hold the stand so you will not topple the monitor when you change the monitor's angle.

You are able to adjust the monitor's angle from 15° to 57°.



**NOTE: Do not adjust the viewing angle over 57 degrees in order to avoid damage.**



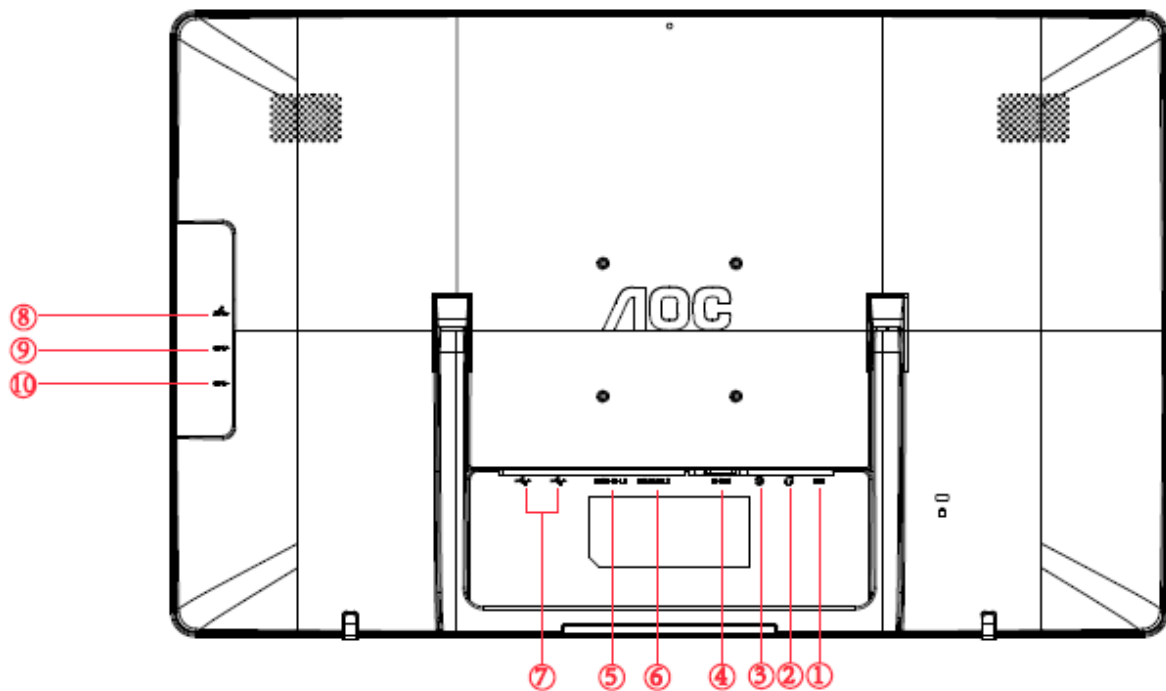
NOTE:

Do not touch the LCD screen when you change the angle. It may cause damage or break the LCD screen.

Do not put your hand close to the gap between the monitor and the base to avoid the injury when adjusting the viewing angle.

# Connecting the Monitor

Cable Connections In Back of Monitor and Computer:



1. Power
2. Earphone out
3. Audio in
4. Analog (D-Sub 15-Pin VGA cable)
5. HDMI/MHL1
6. HDMI/MHL2
7. USB 2.0x2
8. USB 3.0+ fast charging
9. USB 3.0
10. USB 3.0 to PC

To protect equipment, always turn off the PC and LCD monitor before connecting.

1. Connect the power cable to the AC port on the back of the monitor.
2. Connect one end of the 15-pin D-Sub cable to the back of the monitor and connect the other end to the computer's D-Sub port.
3. Connect one end of the HDMI cable to the back of the monitor and connect the other end to the computer's HDMI port.
4. Connect one end of the MHL cable to the back of the monitor and connect the other end to the computer's MHL port.
5. Connect the audio cable to audio in port on the back of the monitor
6. Connect one end of the USB3.0 cable to the back of the monitor and connect the other end to the computer's USB3.0 port.
7. Turn on your monitor and computer.

If your monitor displays an image, installation is complete. If it does not display an image, please refer

Troubleshooting.

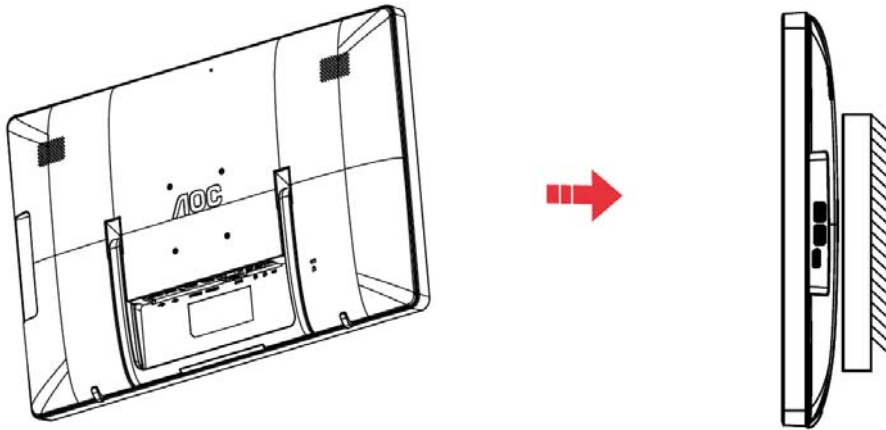
## Multi-Touch Screen

User can use Display Multi-touch Function under operating system higher than Window 7 home premium. Before using Display Multi-touch Function, user need to connect basic wires ( power cable, VGA cable, USB cable). Then user can fully enjoy Multi-touch Function. Part of specific use, please see the following drawings.



# Wall Mounting

Preparing to Install An Optional Wall Mounting Arm.



This monitor can be attached to a wall mounting arm you purchase separately. Disconnect power before this procedure. Follow these steps:

1. Fold the stand
2. Follow the manufacturer's instructions to assemble the wall mounting arm.
3. Place the wall mounting arm onto the back of the monitor. Line up the holes of the arm with the holes in the back of the monitor.
4. Insert the 4 screws into the holes and tighten.
5. Reconnect the cables. Refer to the user's manual that came with the optional wall mounting arm for instructions on attaching it to the wall.

# Adjusting

## Setting Optimal Resolution

### Windows Vista

For Windows Vista:

1 Click **START**.

2 Click **CONTROL PANEL**.



3 Click **Appearance and Personalization**.



4 Click **Personalization**





5 Click **Display Settings**.



6 Set the resolution **SLIDE-BAR** to Optimal preset resolution



# Windows XP

For Windows XP:

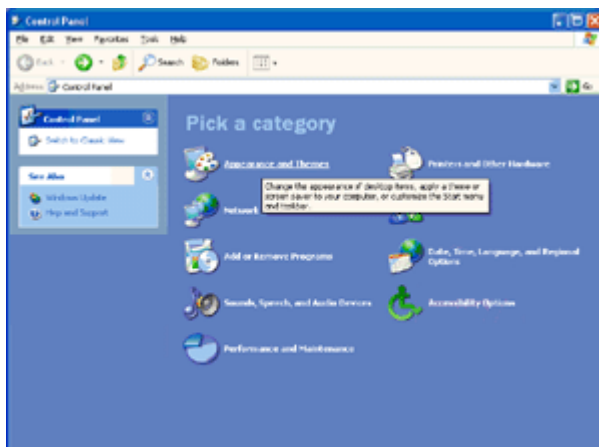
1 Click **START**.



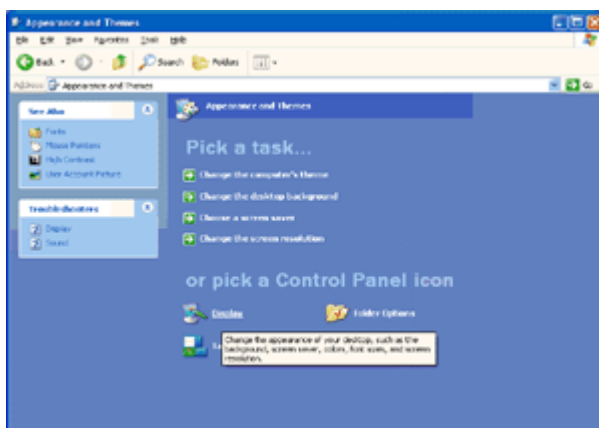
2 Click **SETTINGS**.

3 Click **CONTROL PANEL**.

4 Click **Appearance and Themes**.

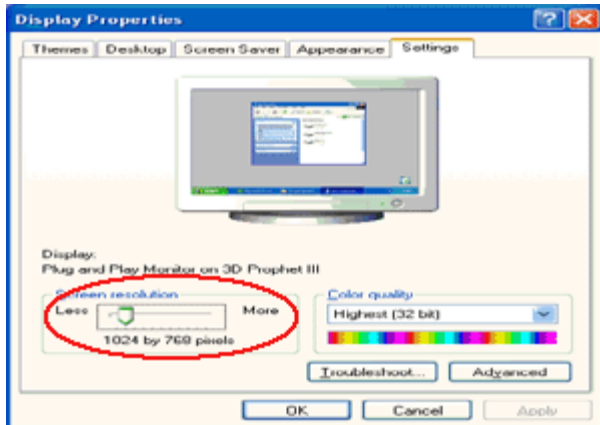


5 Double click **DISPLAY**.



6 Click **SETTINGS**.

7 Set the resolution **SLIDE-BAR** to Optimal preset resolution



## Windows ME/2000

For Windows ME/2000:

1 Click **START**.

2 Click **SETTINGS**.

3 Click **CONTROL PANEL**.

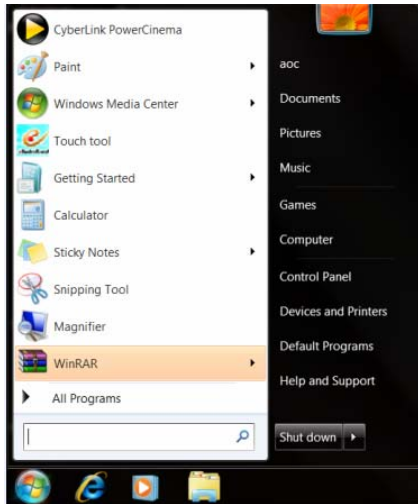
4 Double click **DISPLAY**.

5 Click **SETTINGS**.

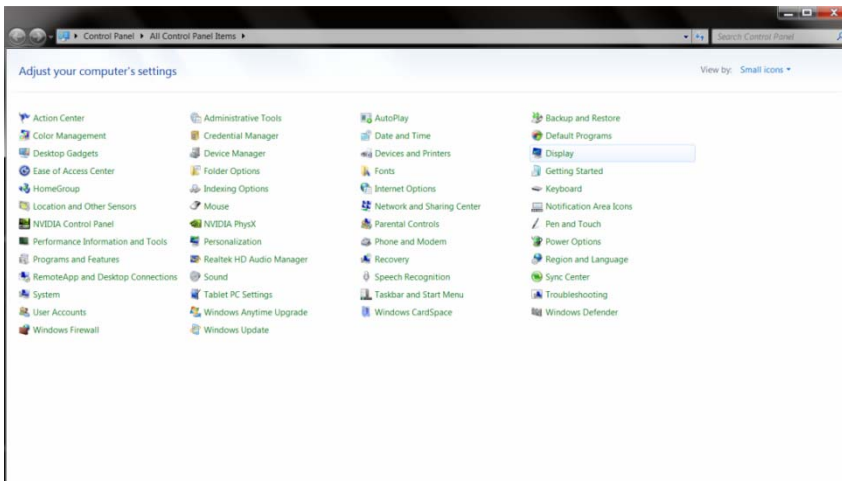
6 Set the resolution **SLIDE-BAR** to Optimal preset resolution

## Windows 7

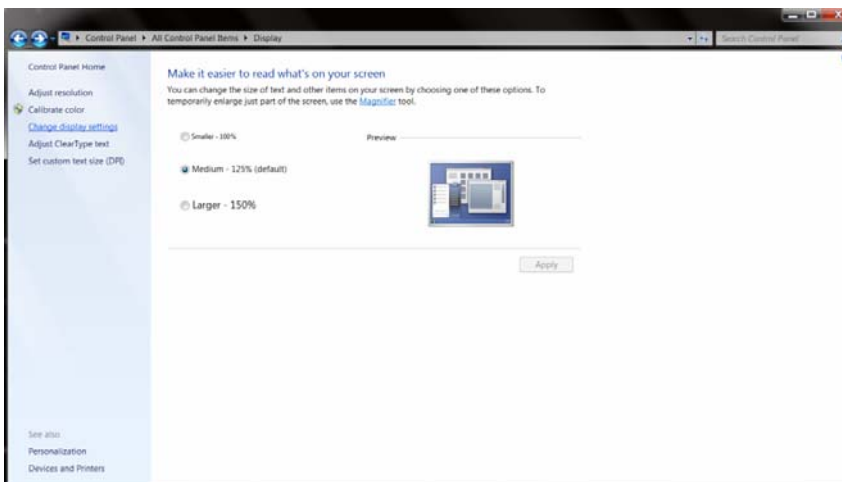
1. Start Windows® 7
2. Click on the **'Start'** button and then click on **'Control Panel'**.



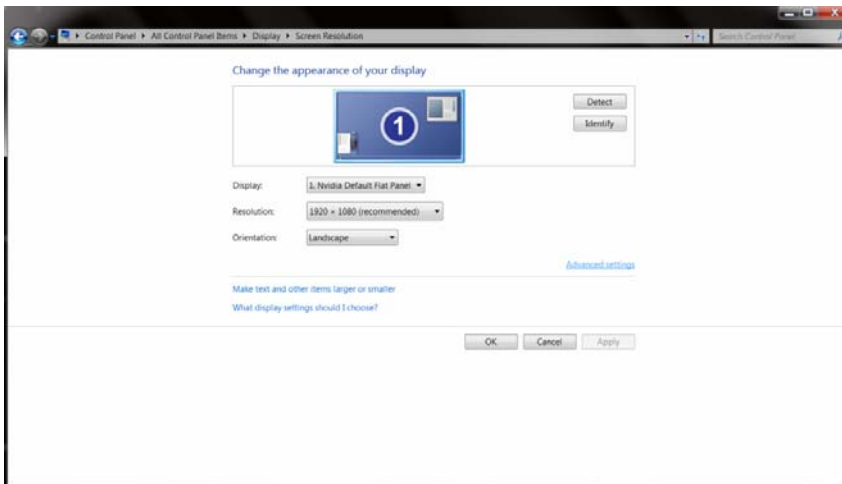
3. Click on the **“Display”** icon.



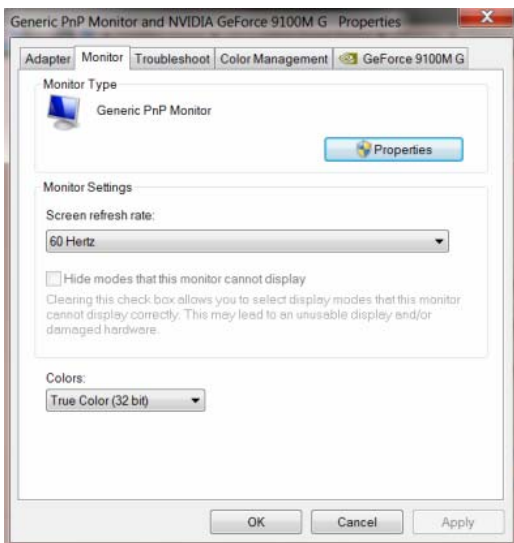
4. Click on the **“Change display settings”** button.



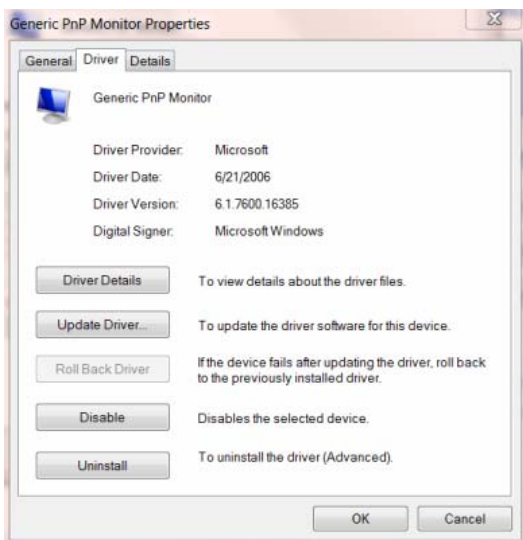
5. Click the **“Advanced Settings”** button.



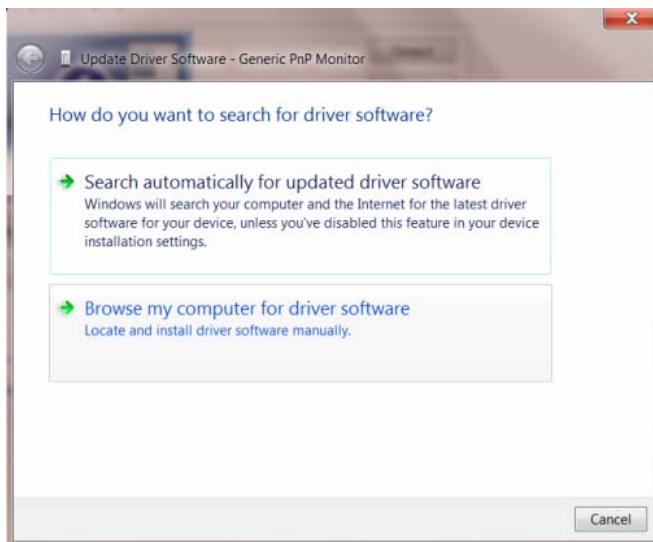
6. Click the **“Monitor”** tab and then click the **“Properties”** button.



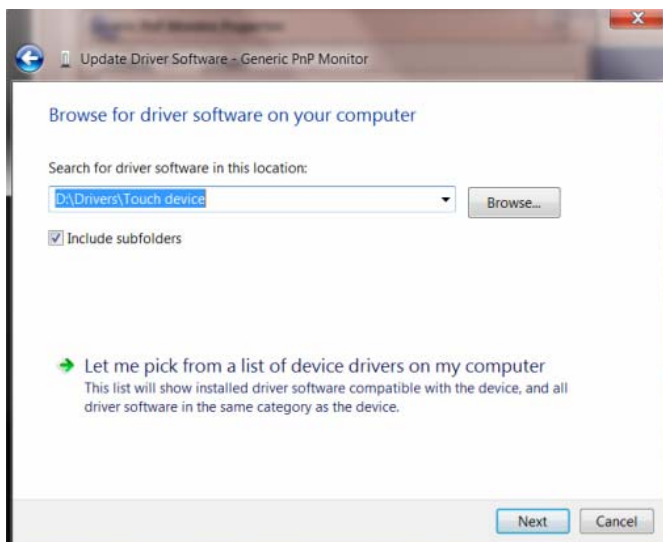
7. Click the **“Driver”** tab.



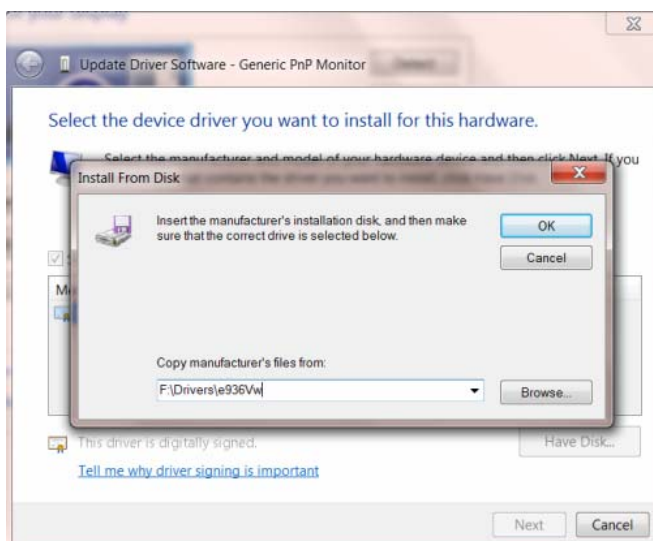
8. Open the **“Update Driver Software-Generic PnP Monitor”** window by clicking on **“Update Driver...”** and then click the **“Browse my computer for driver software”** button.



9. Select "Let me pick from a list of device drivers on my computer".



10. Click the "Have Disk" button. Click on the "Browse" button and navigate to the following directory:  
X:\Driver\module name (where X is the drive letter designator for the CD-ROM drive).



11. Select the "xxx.inf" file and click the "Open" button. Click the "OK" button.

12. Select your monitor model and click the "Next" button. The files will be copied from the CD to your hard disk

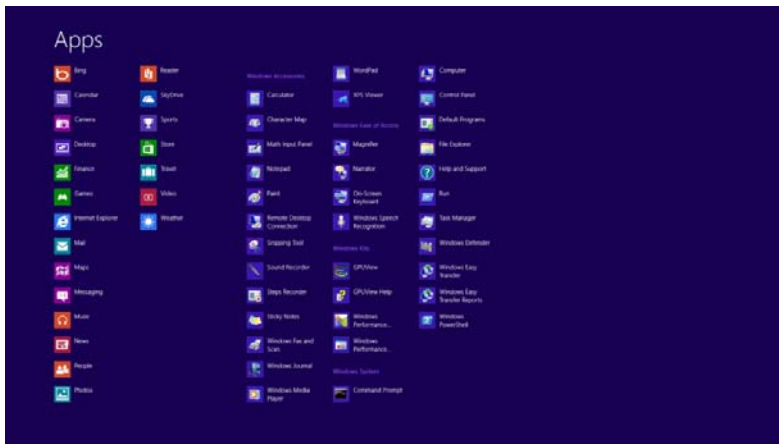
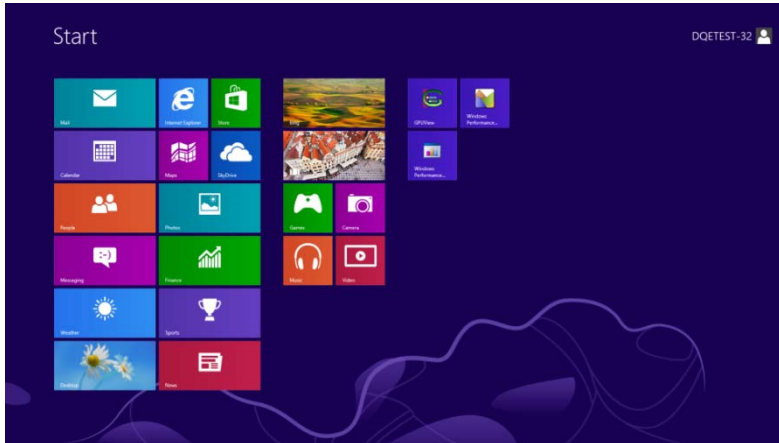
drive.

- Close all open windows and remove the CD.
- Restart the system. The system will automatically select the maximum refresh rate and corresponding Color Matching Profiles.

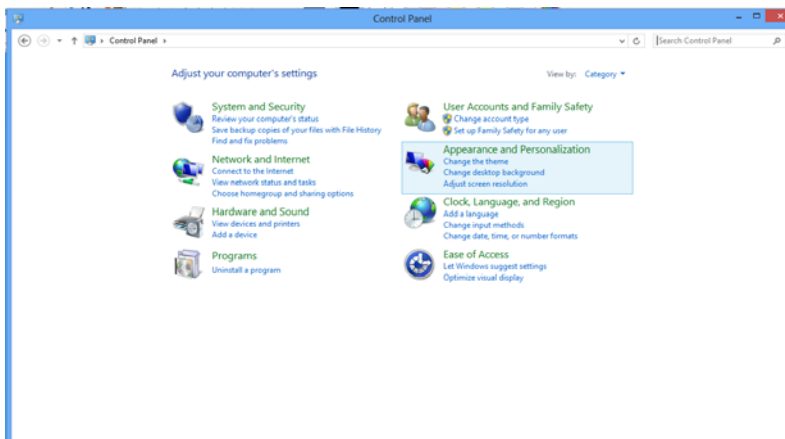
## Windows 8

### For Windows 8:

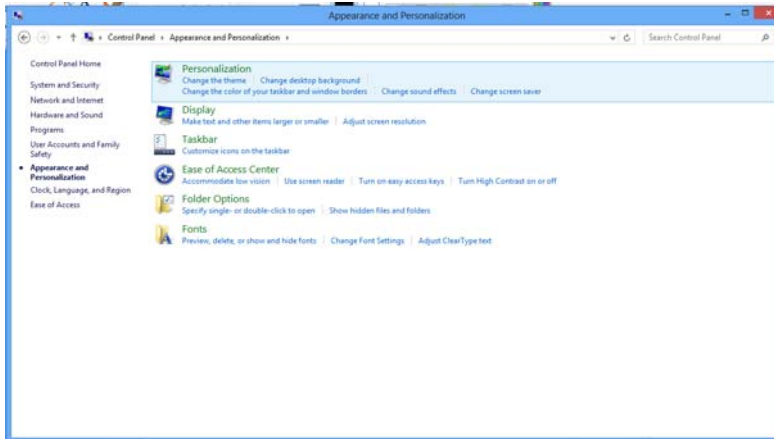
- Right click and click **All apps** at the bottom-right of the screen.



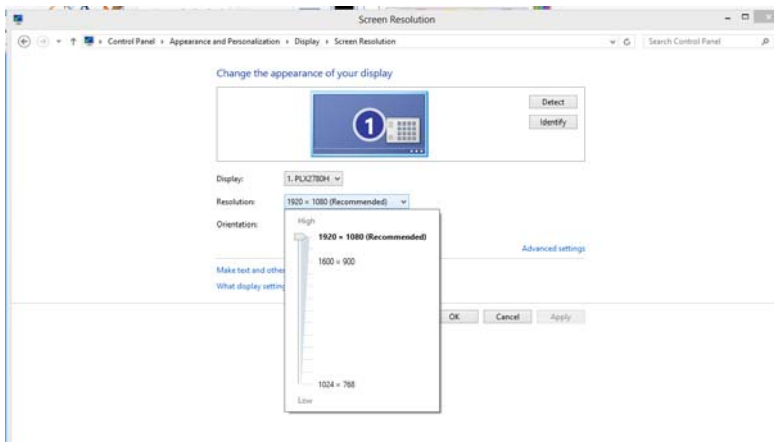
- Set the “View by” to “Category”.
- Click **Appearance and Personalization**.



4. Click **DISPLAY**.

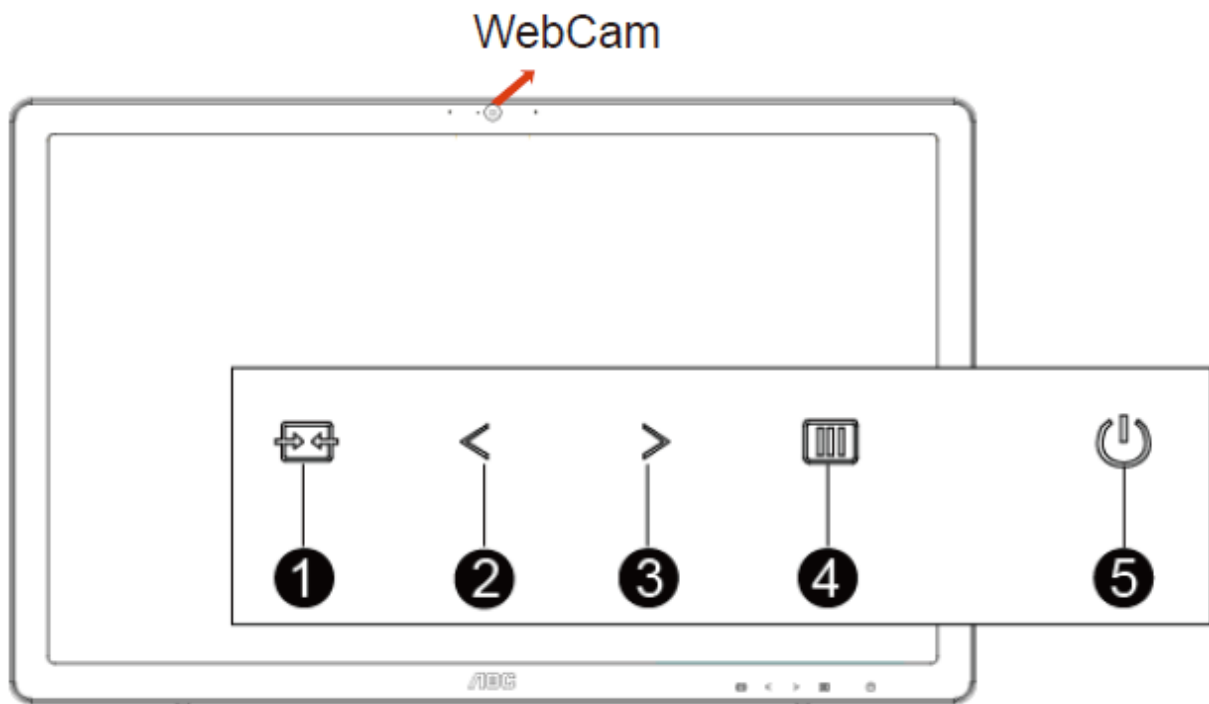


5. Set the resolution **SLIDE-BAR** to Optimal preset resolution.





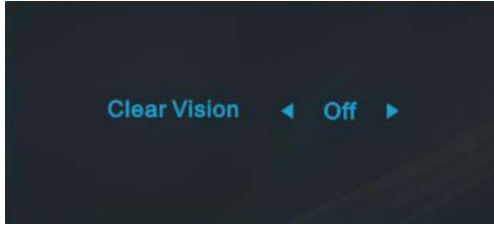
# Hotkeys



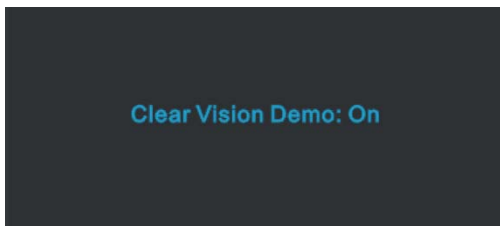
|   |                  |
|---|------------------|
| 1 | Source/Auto/Exit |
| 2 | Clear Vision/<   |
| 3 | Volume/>         |
| 4 | Menu/Enter       |
| 5 | Power            |

### Clear Vision

1. When there is no OSD, Press the “<” button to activate Clear Vision.
2. Use the “<” or “>” buttons to select between weak, medium, strong, or off settings. Default setting is always “off”.



3. Press and hold “<” button for 5 seconds to activate the Clear Vision Demo, and a message of “Clear Vision Demo: on” will be display on the screen for a duration of 5 seconds. Press Menu or Exit button, the message will disappear. Press and hold “<” button for 5 seconds again, Clear Vision Demo will be off.



Clear Vision function provides the best image viewing experience by converting low resolution and blurry images into clear and vivid images.

|                   |           |                         |
|-------------------|-----------|-------------------------|
| Clear Vision      | Off       | Adjust the Clear Vision |
|                   | Weak      |                         |
|                   | Medium    |                         |
|                   | Strong    |                         |
| Clear Vision Demo | on or off | Disable or Enable Demo  |

# Using "MHL(Mobile High-Definition Link)"

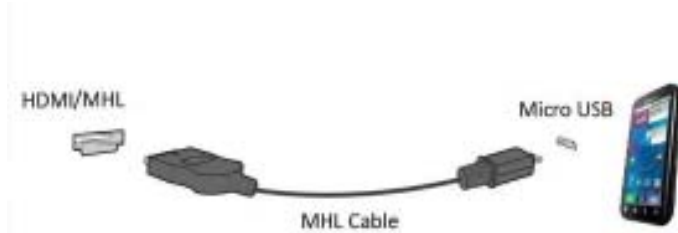
## 1."MHL" (Mobile High-Definition Link)

This feature allows you to enjoy videos and photos (imported from a connected mobile device that supports MHL) on the screen of the product.

- To use the MHL function, you need an MHL-certified mobile device. You can check if your mobile device is MHL certified on the device manufacturer's website. To find a list of MHL-certified devices, visit the official MHL website (<http://www.mhlconsortium.org>).
- To use the MHL function, the latest version of software must be installed on the mobile device.
- On some mobile devices, the MHL function may not be available depending on the device's performance or functionality.
- Since the display size of the product is larger than those of mobile devices, the picture quality may degrade.
- This product is officially MHL-certified. If you encounter any problem when using the MHL function, please contact the manufacturer of the mobile device.
- The picture quality may degrade when content (imported from the mobile device) with a low Resolution is played on the product.

## Using "MHL"

1. Connect the micro USB port on the mobile device to the [HDMI / MHL] port on the product using the MHL cable.



- When the MHL cable is used, [HDMI / MHL] is the only port on this monitor that supports the MHL function.
- Mobile device must be purchased separately.

2. Press the source button and switch to HDMI /MHL to activate MHL mode.

3. After about 3 seconds, the MHL screen will be displayed if MHL mode is active.

Remark: The indicated time "3 sec later" may vary depending on the mobile device.

## When the mobile device is not connected or does not support MHL

- If MHL mode is not activated, check the connection of the mobile device.
- If MHL mode is not activated, check if the mobile device supports MHL.
- If MHL mode is not activated even though the mobile device supports MHL, update the firmware of the mobile device to the latest version.
- If MHL mode is not activated even though the mobile device supports MHL, check if mobile device MHL port is MHL standard port otherwise an additional MHL-enabled adapter is required.

# OSD Setting

Basic and simple instruction on the control keys.








1. Press the **MENU-button** to activate the OSD window.
2. Press < or > to navigate through the functions. Once the desired function is highlighted, press the **MENU-button** to activate. Press < or > to navigate through the sub-menu. Once the desired function is highlighted, press **MENU-button** to activate.
3. Press < or > to change the settings of the selected function. Press **AUTO** to exit. If you want to adjust any other function, repeat steps 2-3.
4. OSD Lock Function: To lock the OSD, press and hold the **MENU-button** while the monitor is off and then press **power-button** to turn the monitor on. To un-lock the OSD, press and hold the **MENU-button** while the monitor is off and then press **power-button** to turn the monitor on.









## Notes:

1. If the product screen size is 4:3 or input signal resolution is wide format, the item of "Image Ratio" is disabled.
2. One of Clear vision, DPS, DCR, Color Boost, and Picture Boost functions is activated; the other four functions are turned off accordingly.

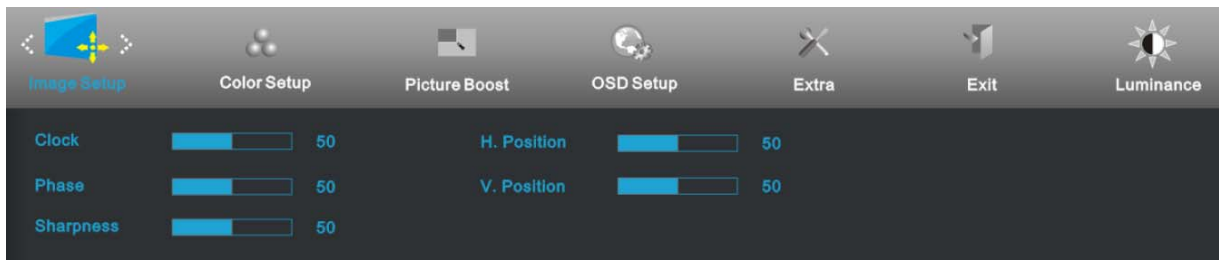
## Luminance




- 1 Press  (Menu) to display menu.
- 2 Press < or > to select  (Luminance), and press  to enter.
- 3 Press < or > to select submenu, and press  to enter.
- 4 Press < or > to adjust.
- 5 Press  to exit.


|   |            |          |   |                                 |
|---|------------|----------|---|---------------------------------|
|  | Brightness | 0-100    |   | Backlight Adjustment.           |
|   | Contrast   | 0-100    |   | Contrast from Digital-register. |
|   | Eco mode   | Standard |   | Standard Mode.                  |
|   |            | Text     |  | Text Mode.                      |
|   |            | Internet |  | Internet Mode.                  |
|   |            | Game     |  | Game Mode.                      |
|   |            | Movie    |  | Movie Mode.                     |
|   |            | Sports   |  | Sports Mode.                    |
|   | Gamma      | Gamma1   |   | Adjust to Gamma 1.              |
|   |            | Gamma2   |   | Adjust to Gamma 2.              |
|   |            | Gamma3   |   | Adjust to Gamma 3.              |
|   | DCR        | Off      |   | Disable dynamic contrast ratio. |
|   |            | On       |  | Enable dynamic contrast ratio.  |
|   | Overdrive  | Weak     |   | Adjust the response time        |
|   |            | Medium   |   |                                 |
|   |            | Strong   |   |                                 |
|   |            | Off      |   |                                 |
| DPS   | Off        |          | Dynamic Power saving  |                                 |
|   | On         |          |   |                                 |

## Image Setup




1 Press  (Menu) to display menu.

2 Press < or > to select  (Image Setup), and press  to enter.

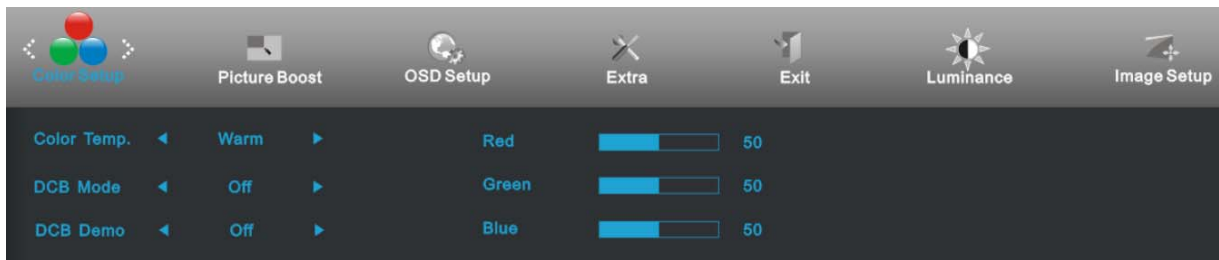
3 Press < or > to select submenu, and press  to enter.






4 Press < or > to adjust.


5 Press  to exit.

|  |            |       |   |
|--|------------|-------|---|
|  | Clock      | 0-100 | Adjust picture Clock to reduce Vertical-Line noise.   |
|  | Phase      | 0-100 | Adjust Picture Phase to reduce Horizontal-Line noise. |
|  | Sharpness  | 0-100 | Adjust picture sharpness.                             |
|  | H.Position | 0-100 | Adjust the horizontal position of the picture.        |
|  | V.Position | 0-100 | Adjust the vertical position of the picture.          |

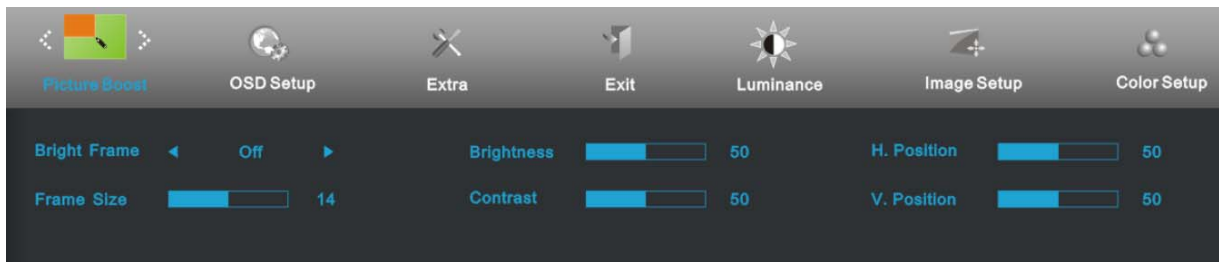
## Color Setup








- 1 Press  (Menu) to display menu.
- 2 Press < or > to select , and press  to enter.
- 3 Press < or > to select submenu, and press  to enter.
- 4 Press < or > to adjust.
- 5 Press  to exit.

|   |             |              |                                    |  |                                 |
|---|-------------|--------------|------------------------------------|--|---------------------------------|
|  | Color Temp. | Warm         |                                    | Recall Warm Color Temperature from EEPROM.   |                                 |
|   |             | Normal       |                                    | Recall Normal Color Temperature from EEPROM. |                                 |
|   |             | Cool         |                                    | Recall Cool Color Temperature from EEPROM.   |                                 |
|   |             | sRGB         |                                    | Recall sRGB Color Temperature from EEPROM.   |                                 |
|   |             | User         | Red                                |  | Red Gain from Digital-register. |
|   |             |              | Green                              |  | Green Gain Digital-register.    |
|   | Blue        |              |                                    | Blue Gain from Digital-register.             |                                 |
|   | DCB Mode    | Full Enhance | on or off                          | Disable or Enable Full Enhance Mode.         |                                 |
|   |             | Nature Skin  | on or off                          | Disable or Enable Nature Skin Mode.          |                                 |
|   |             | Green Field  | on or off                          | Disable or Enable Green Field Mode.          |                                 |
|   |             | Sky-blue     | on or off                          | Disable or Enable Sky-blue Mode.             |                                 |
| AutoDetect  |             | on or off    | Disable or Enable AutoDetect Mode. |  |                                 |
| DCB Demo  |             | on or off    | Disable or Enable Demo.            |  |                                 |

## Picture Boost

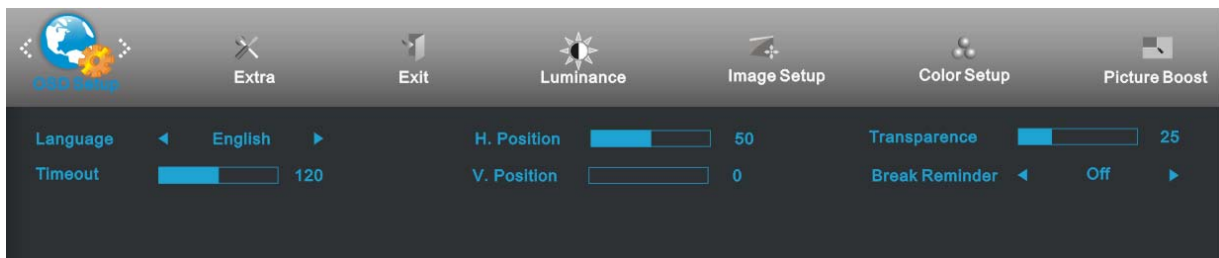







- 1 Press  (Menu) to display menu.
- 2 Press < or > to select  (Picture Boost), and press  to enter.
- 3 Press < or > to select submenu, and press  to enter.
- 4 Press < or > to adjust.
- 5 Press  to exit.


|  |              |           |                                   |
|--|--------------|-----------|-----------------------------------|
|  | Frame Size   | 14-100    | Adjust Frame Size.                |
|  | Brightness   | 0-100     | Adjust Frame Brightness.          |
|  | Contrast     | 0-100     | Adjust Frame Contrast.            |
|  | H. position  | 0-100     | Adjust Frame horizontal position. |
|  | V. position  | 0-100     | Adjust Frame vertical position.   |
|  | Bright Frame | on or off | Disable or Enable Bright Frame.   |



## OSD Setup









- 1 Press  (Menu) to display menu.
- 2 Press < or > to select  (OSD Setup), and press  to enter.
- 3 Press < or > to select submenu, and press  to enter.
- 4 Press < or > to adjust.
- 5 Press  to exit.

|   |                |           |  |
|---|----------------|-----------|--|
|  | H. Position    | 0-100     | Adjust the horizontal position of OSD.   |
|   | V. Position    | 0-100     | Adjust the vertical position of OSD.   |
|   | Timeout        | 5-120     | Adjust the OSD Timeout.  |
|   | Transparence   | 0-100     | Adjust the transparence of OSD.  |
|   | Language       |           | Select the OSD language.   |
|   | Break Reminder | on or off | Disable or Enable<br>(1 hour of work, break ?) /<br>(2 hours of work, break ?) |

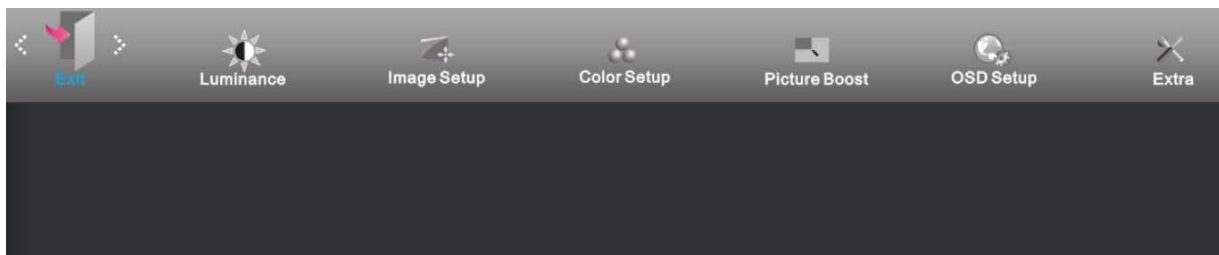
## Extra




- 1 Press  (Menu) to display menu.
- 2 Press < or > to select  (Extra), and press  to enter.
- 3 Press < or > to select submenu, and press  to enter.
- 4 Press < or > to adjust.
- 5 Press  to exit.

|  |              |                    |  |
|--|--------------|--------------------|--|
|  | Input Select | Analog / HDMI(MHL) | Select input signal source.                                  |
|  | Auto Config  | yes or no          | Auto adjust the picture to default.                          |
|  | Off timer    | 0-24hrs            | Select DC off time.  |
|  | Image Ratio  | wide or 4:3        | Select wide or 4:3 format for display.                       |
|  | DDC-CI       | yes or no          | Turn ON/OFF DDC-CI Support.                                  |
|  | Reset        | yes or no          | Reset the menu to default.                                   |
|  | Information  |                    | Show the information of the main image and sub-image source. |


## Exit





1 Press  (Menu) to display menu.

2 Press < or > to select  (Exit), and press  to enter.

3 Press  to exit.

|   |      |  |                    |
|---|------|--|--------------------|
|  | Exit |  | Exit the main OSD. |
|---|------|--|--------------------|

# LED Indicator

| Status          | LED Color     |   |
|-----------------|---------------|---|
| Full Power Mode | White         |  |
| Active-off Mode | Orange or red |  |

# Driver

## Monitor Driver

### Windows 2000

1. Start Windows® 2000
  2. Click on the 'Start' button, point to 'Settings', and then click on 'Control Panel'.
  3. Double click on the 'Display' Icon.
  4. Select the 'Settings' tab then click on 'Advanced...'
  5. Select 'Monitor'
    - If the 'Properties' button is inactive, it means your monitor is properly configured. Please stop installation.
    - If the 'Properties' button is active. Click on 'Properties' button. Please follow the steps given below.
  6. Click on 'Driver' and then click on 'Update Driver...' then click on the 'Next' button.
  7. Select 'Display a list of the known drivers for this device so that I can choose a specific driver', then click on 'Next' and then click on 'Have disk...'
  8. Click on the 'Browse...' button then select the appropriate drive F: ( CD-ROM Drive).
  9. Click on the 'Open' button, then click on the 'OK' button.
  10. Select your monitor model and click on the 'Next' button.
  11. Click on the 'Finish' button then the 'Close' button.
- If you can see the 'Digital Signature Not Found' window, click on the 'Yes' button.

### Windows ME

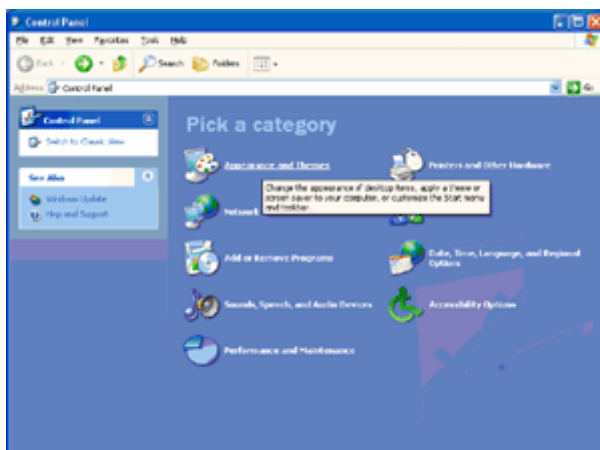
1. Start Windows® Me
2. Click on the 'Start' button, point to 'Settings', and then click on 'Control Panel'.
3. Double click on the 'Display' Icon.
4. Select the 'Settings' tab then click on 'Advanced...'
5. Select the 'Monitor' button, then click on 'Change...' button.
6. Select 'Specify the location of the driver(Advanced)' and click on the 'Next' button.
7. Select 'Display a list of all the drivers in a specific location, so you can choose the driver you want', then click on 'Next' and then click on 'Have Disk...'
8. Click on the 'Browse...' button, select the appropriate drive F: ( CD-ROM Drive) then click on the 'OK' button.
9. Click on the 'OK' button, select your monitor model and click on the 'Next' button.
10. Click on 'Finish' button then the 'Close' button.

# Windows XP

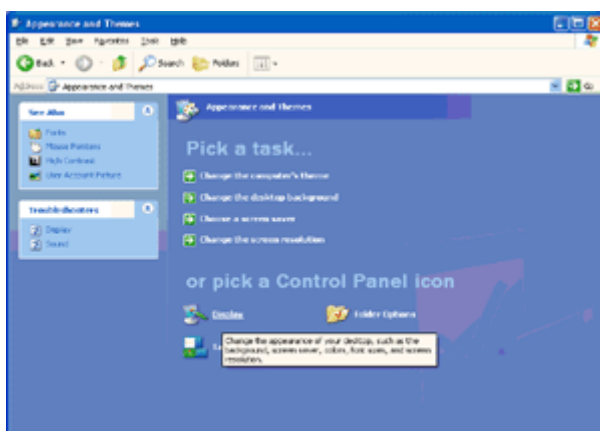
1. Start Windows® XP
2. Click on the 'Start' button and then click on 'Control Panel'.



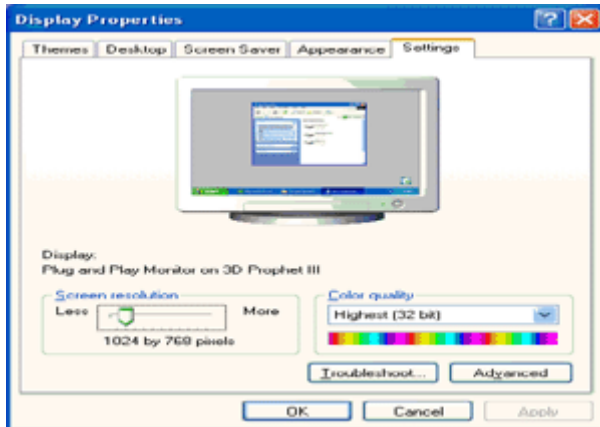
3. Select and click on the category 'Appearance and Themes'



4. Click on the 'Display' Item.



5. Select the 'Settings' tab then click on the 'Advanced' button.

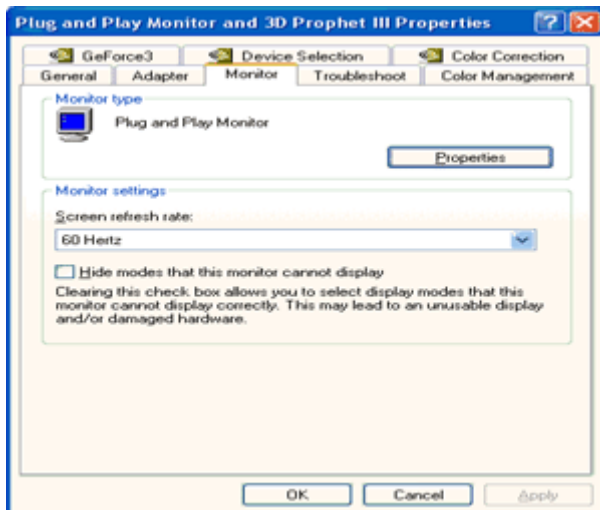


6. Select 'Monitor' tab

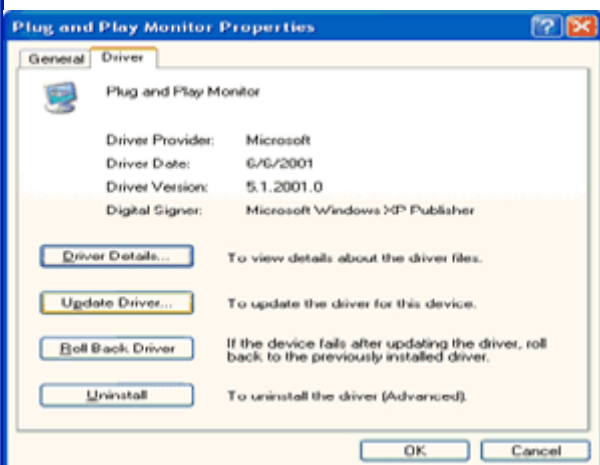
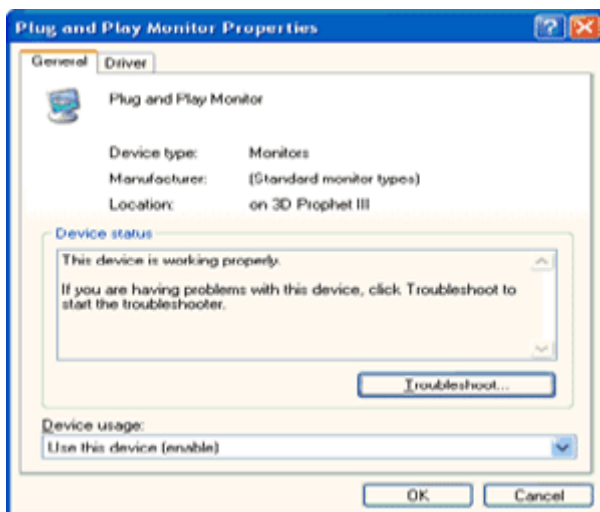
- If the 'Properties' button is inactive, it means your monitor is properly configured. Please stop installation.

- If the 'Properties' button is active, click on 'Properties' button.

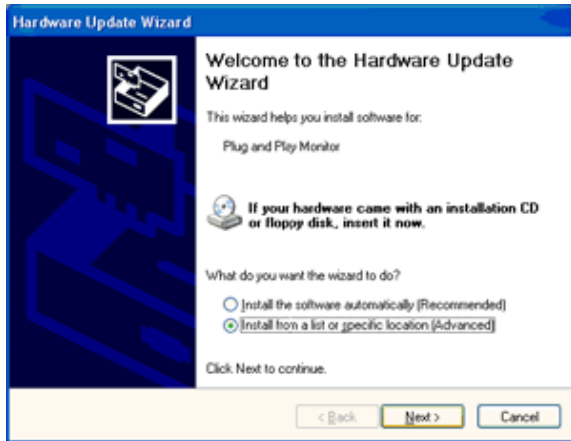
Please follow the steps below.



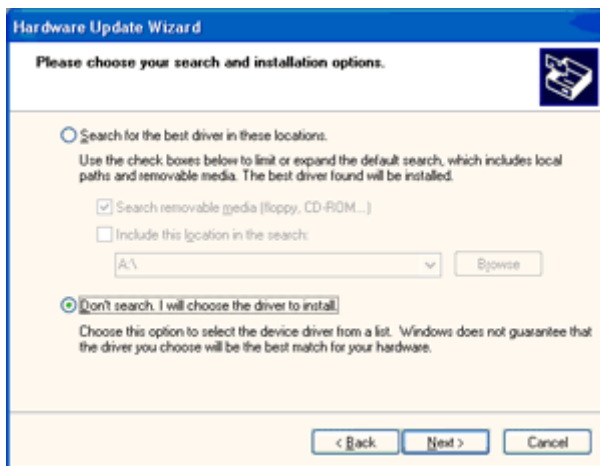
7. Click on the 'Driver' tab and then click on 'Update Driver...' button.



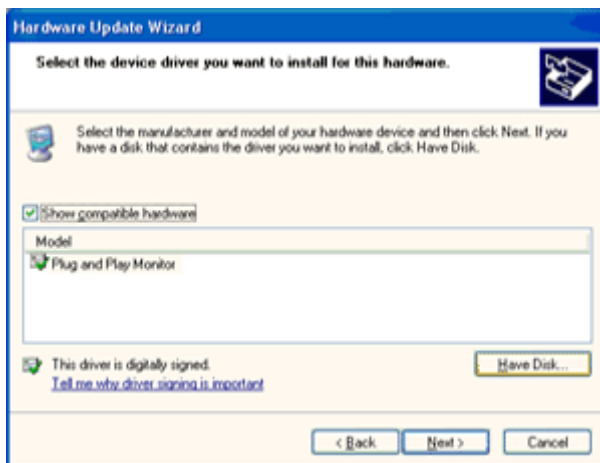
8. Select the 'Install from a list or specific location [advanced]' radio button and then click on the 'Next' button.



9. Select the 'Don't Search. I will choose the driver to install' radio button. Then click on the 'Next' button.



10. Click on the 'Have disk...' button, then click on the 'Browse...' button and then select the appropriate drive F: (CD-ROM Drive).



11. Click on the 'Open' button, then click the 'OK' button.

12. Select your monitor model and click on the 'Next' button.

- If you can see the 'has not passed Windows® Logo testing to verify its compatibility with Windows® XP' message, please click on the 'Continue Anyway' button.

13. Click on the 'Finish' button then the 'Close' button.

14. Click on the 'OK' button and then the 'OK' button again to close the Display Properties dialog box.

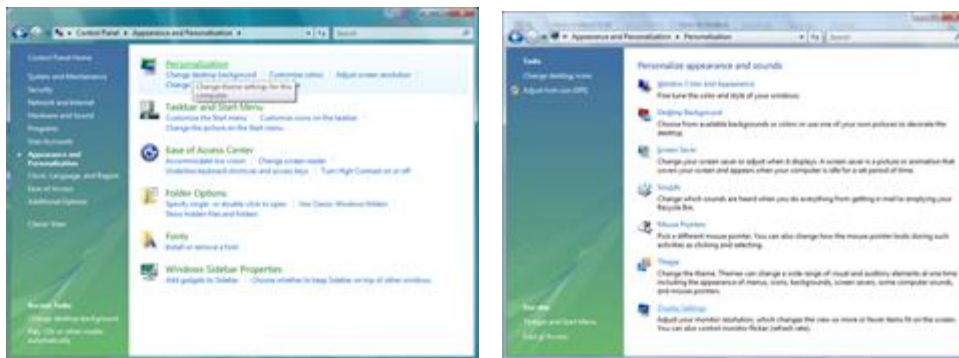


# Windows Vista

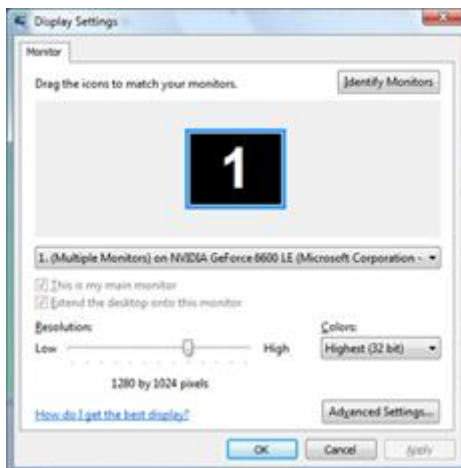
1. Click "Start " and "Control Panel". Then, double-click on "Appearance and Personalization".



2. Click "Personalization" and then "Display Settings".

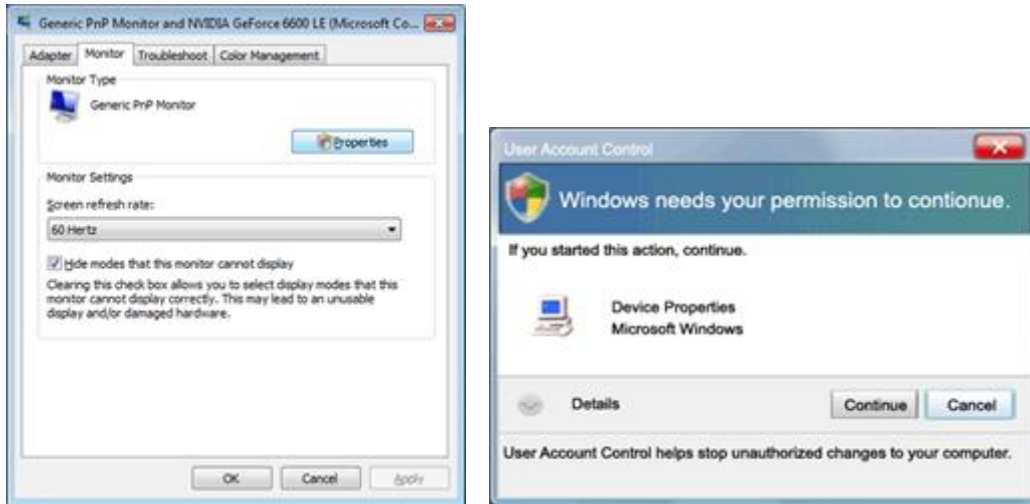


3. Click "Advanced Settings...".

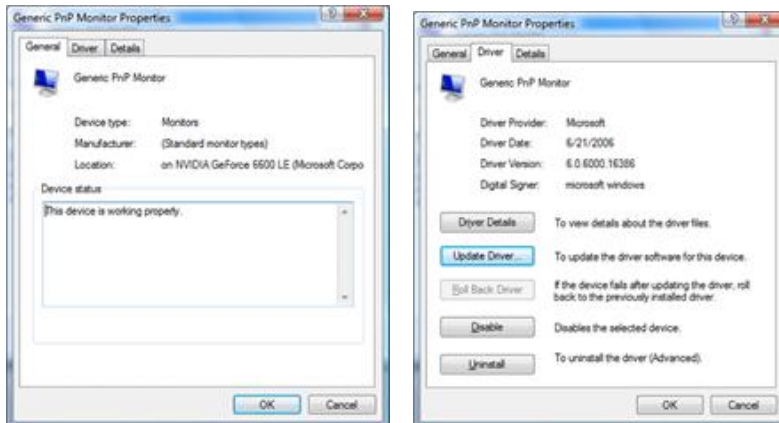


4. Click "Properties" in the "Monitor" tab. If the "Properties" button is deactivated, it means the configuration for your monitor is completed. The monitor can be used as is.

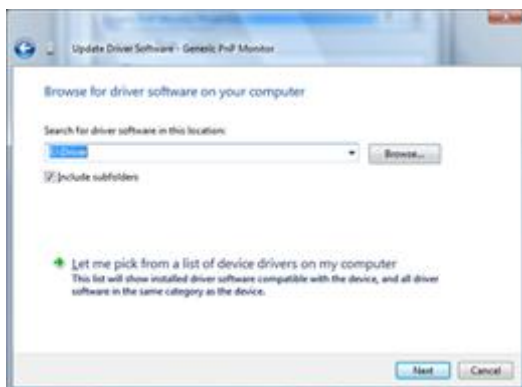
If the message "Windows needs..." is displayed, as shown in the figure below, click "Continue".



5. Click "Update Driver..." in the "Driver" tab.



6. Check the "Browse my computer for driver software" checkbox and click "Let me pick from a list of device drivers on my computer".



7. Click on the 'Have disk...' button, then click on the 'Browse...' button and then select the appropriate drive F:\Driver (CD-ROM Drive).

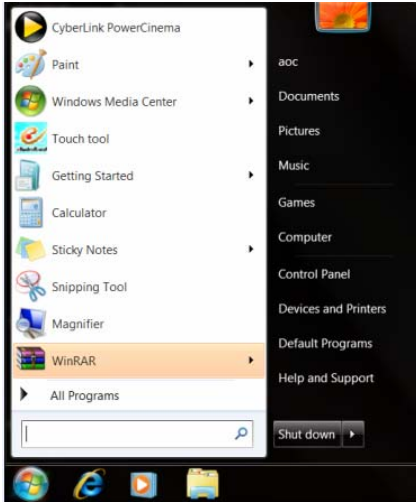
8. Select your monitor model and click on the 'Next' button.

9. Click "Close" → "Close" → "OK" → "OK" on the following screens displayed in sequence.

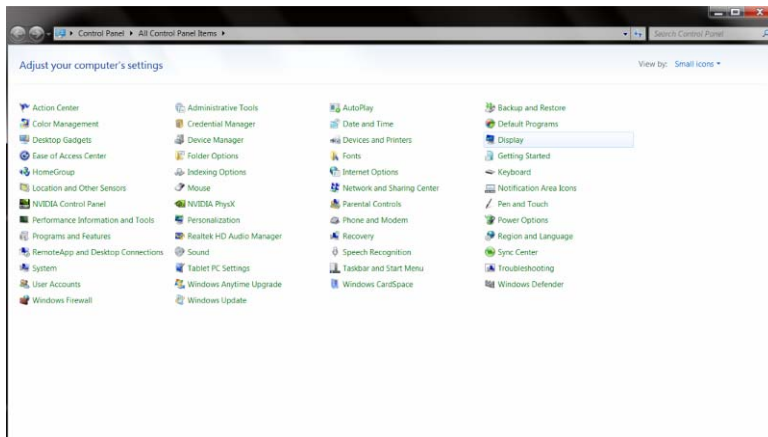
# Windows 7

1. Start Windows® 7

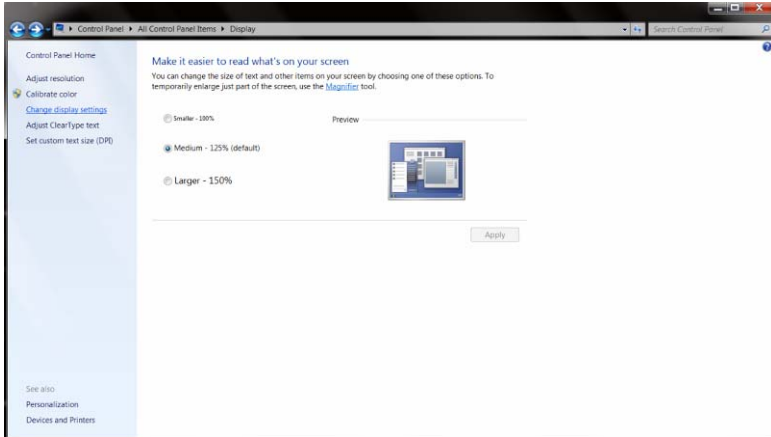
2. Click on the **'Start'** button and then click on **'Control Panel'**.



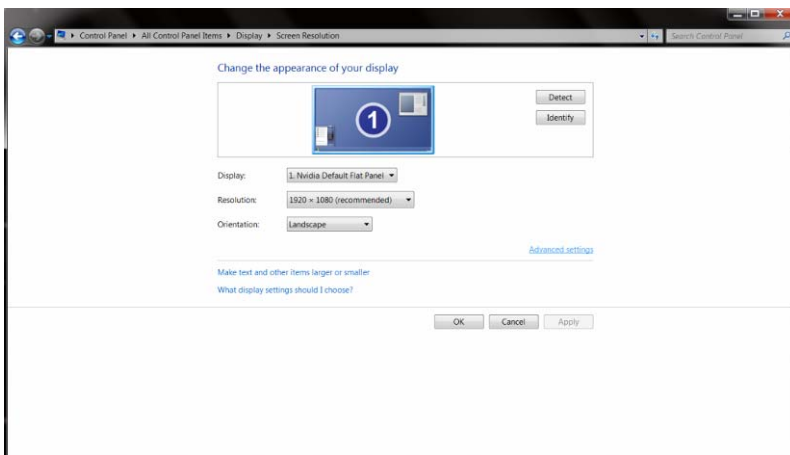
3. Click on the **'Display'** icon.



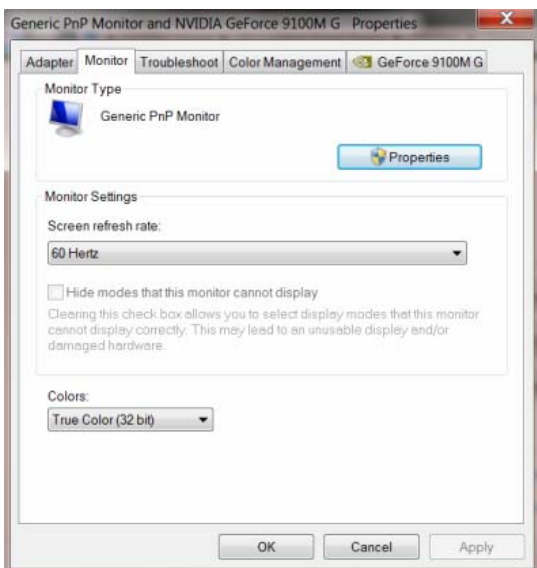
4. Click on the “Change display settings” button.



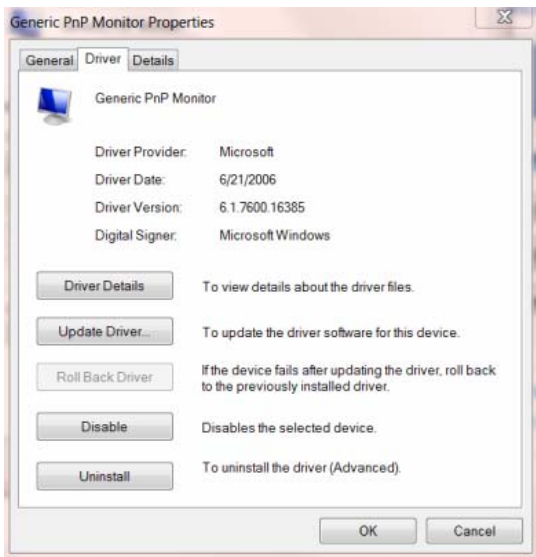
5. Click the “Advanced Settings” button.



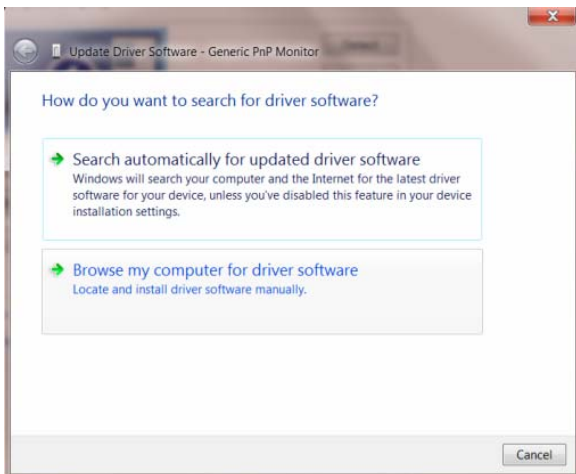
6. Click the “Monitor” tab and then click the “Properties” button.



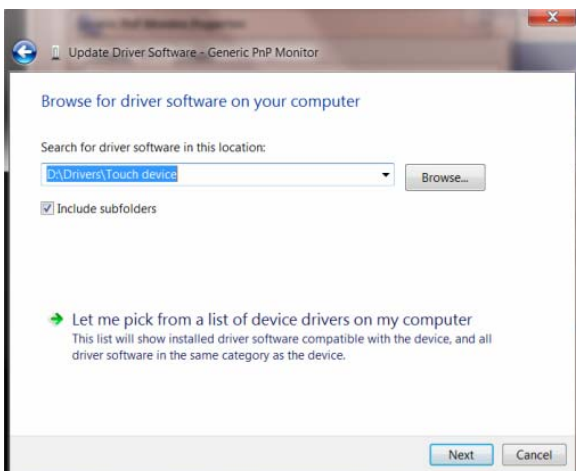
7. Click the **“Driver”** tab.



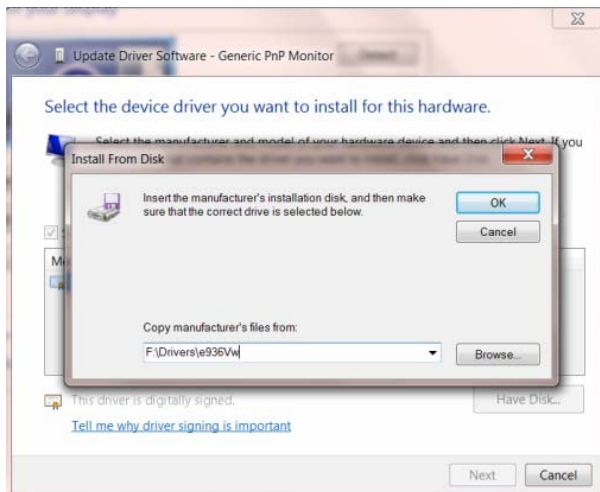
8. Open the "Update Driver Software-Generic PnP Monitor" window by clicking on **“Update Driver...”** and then click the **“Browse my computer for driver software”** button.



9. Select **“Let me pick from a list of device drivers on my computer”**.



10. Click the **“Have Disk”** button. Click on the **“Browse”** button and navigate to the following directory:  
X:\Driver\module name (where X is the drive letter designator for the CD-ROM drive).



11. Select the **“xxx.inf”** file and click the **“Open”** button. Click the **“OK”** button.

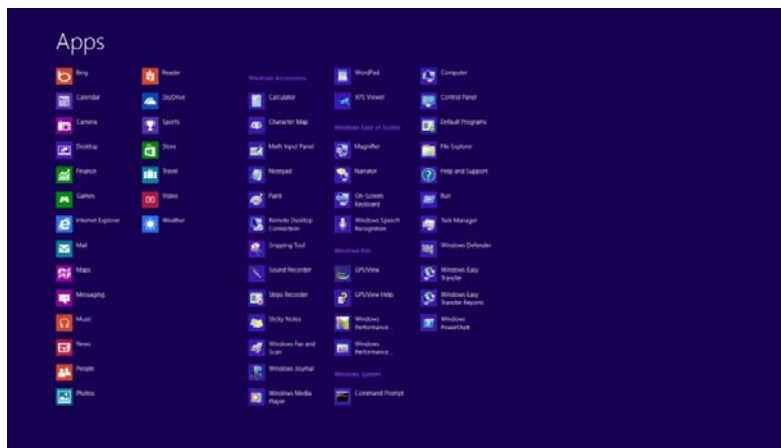
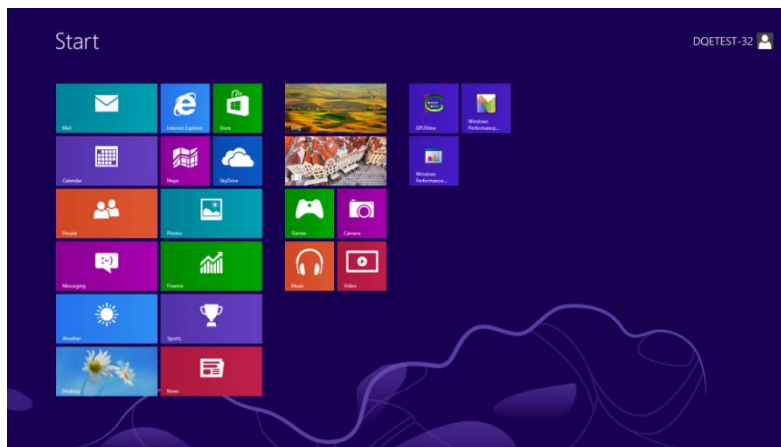
12. Select your monitor model and click the **“Next”** button. The files will be copied from the CD to your hard disk drive.

13. Close all open windows and remove the CD.

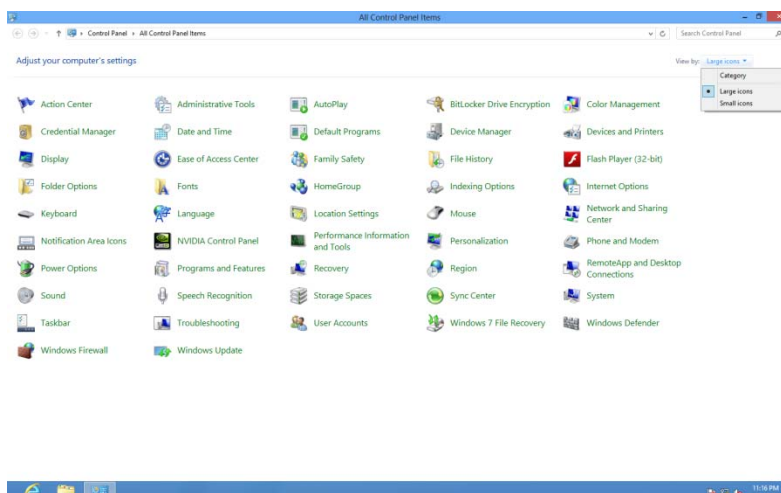
14. Restart the system. The system will automatically select the maximum refresh rate and corresponding Color Matching Profiles.

## Windows 8

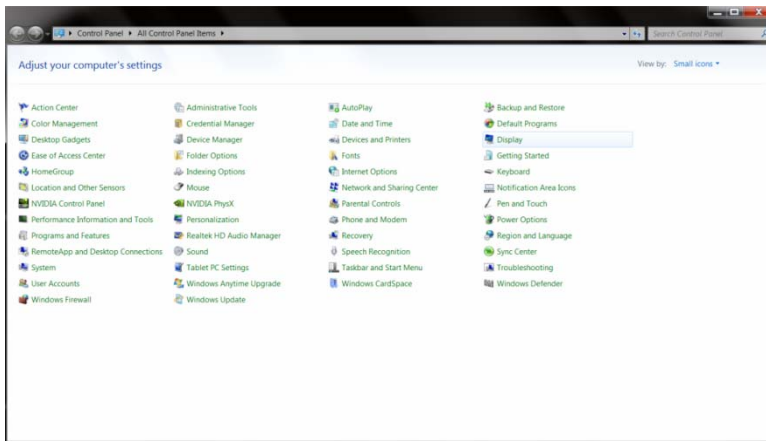
1. Start Windows® 8
2. Right click and click **All apps** at the bottom-right of the screen.



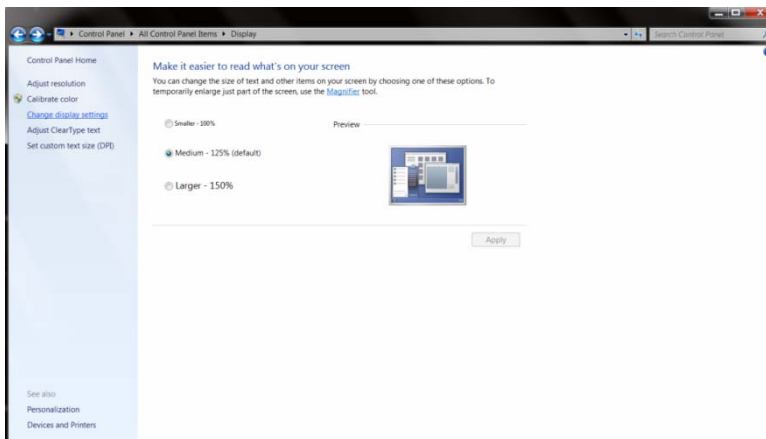
3. Click on the "Control panel" icon
4. Set the "View by" to "Large icons" or "Small icons".



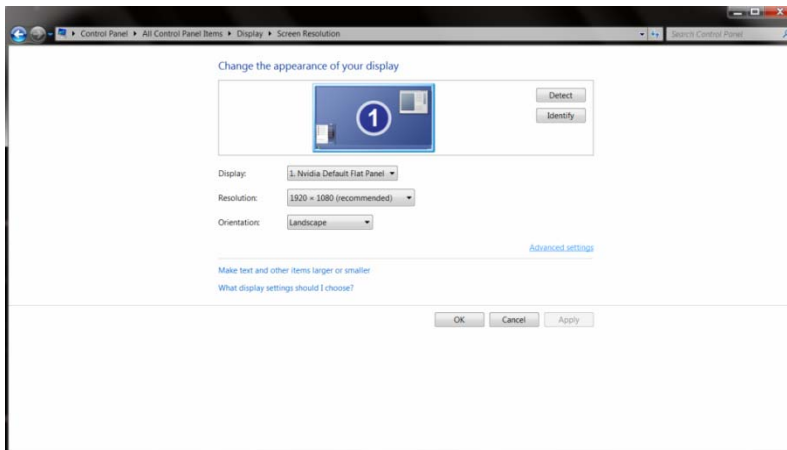
5. Click on the "Display" icon.



6. Click on the **“Change display settings”** button.

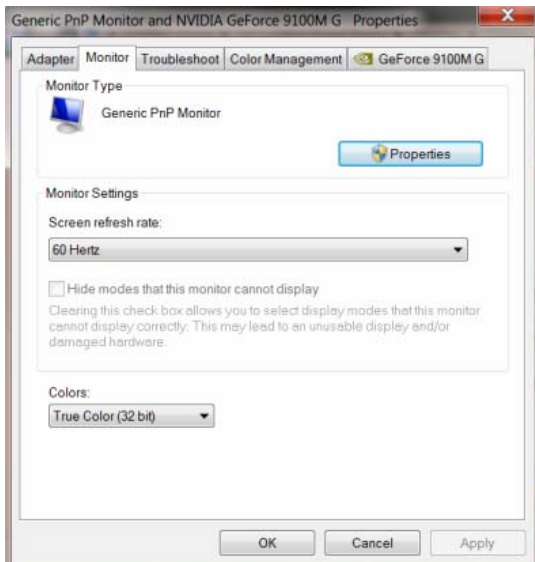


7. Click the **“Advanced Settings”** button.

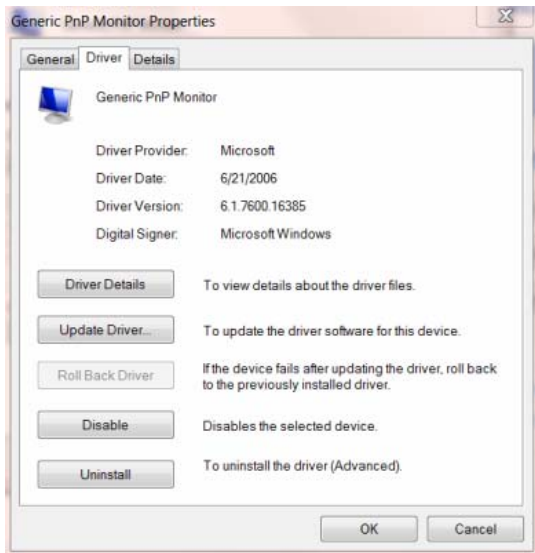


8. Click the **“Monitor”** tab and then click the **“Properties”** button.

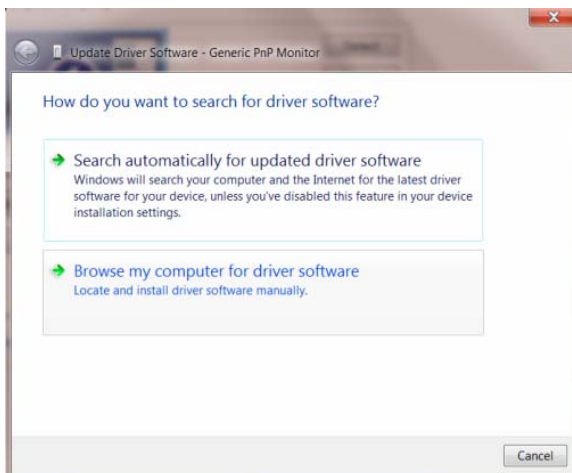




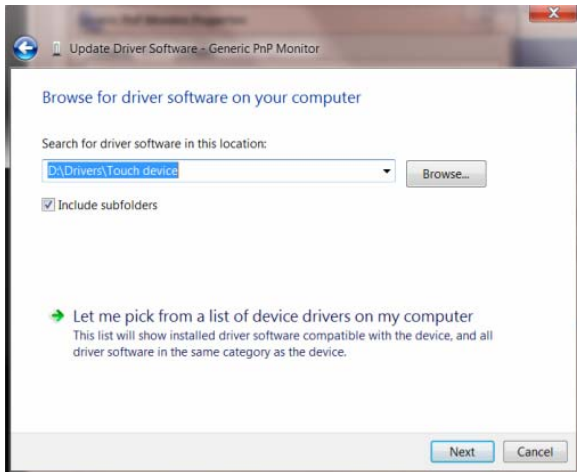
9. Click the **“Driver”** tab.



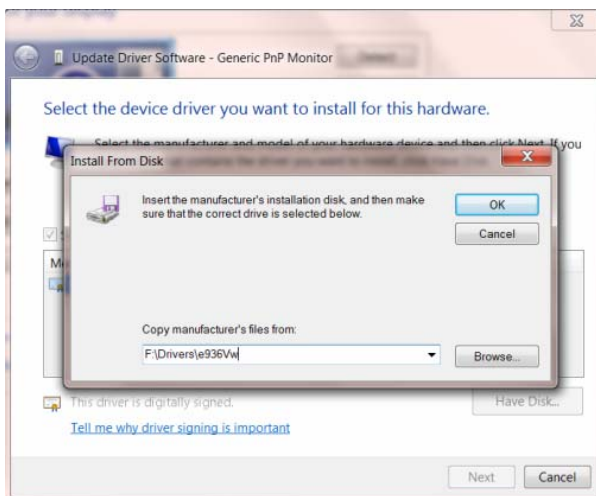
10. Open the **“Update Driver Software-Generic PnP Monitor”** window by clicking on **“Update Driver...”** and then click the **“Browse my computer for driver software”** button.



11. Select **“Let me pick from a list of device drivers on my computer”**.



12. Click the **“Have Disk”** button. Click on the **“Browse”** button and navigate to the following directory:  
X:\Driver\module name (where X is the drive letter designator for the CD-ROM drive).



13. Select the **“xxx.inf”** file and click the **“Open”** button. Click the **“OK”** button.
14. Select your monitor model and click the **“Next”** button. The files will be copied from the CD to your hard disk drive.
15. Close all open windows and remove the CD.
16. Restart the system. The system will automatically select the maximum refresh rate and corresponding Color Matching Profiles.

# i-Menu



Welcome to "i-Menu" software by AOC. i-Menu makes it easy to adjust your monitor display setting by using on screen menus instead of the OSD button on the monitor. To complete installation, please follow the installation guide.



## e-Saver

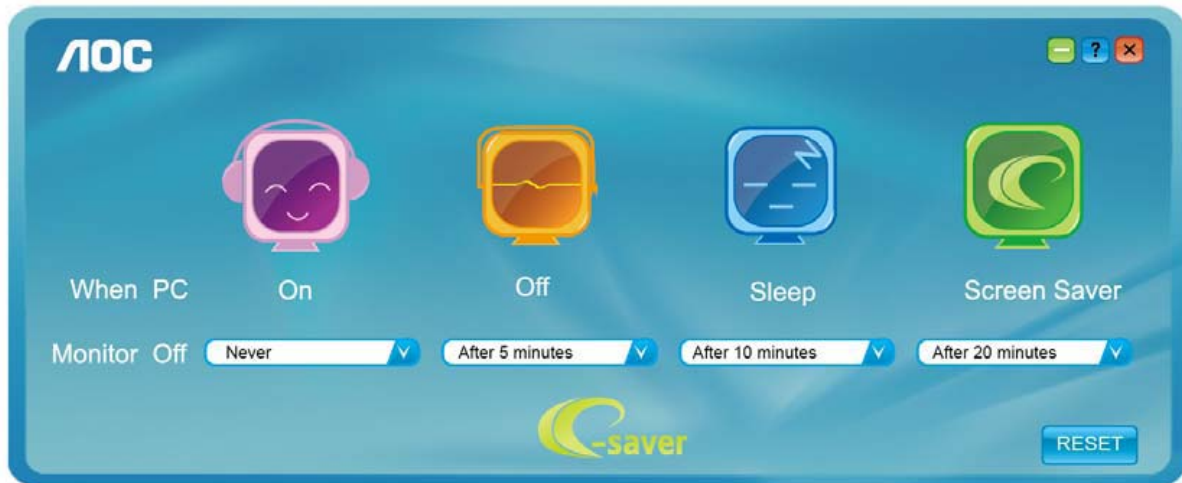


Welcome to use AOC e-Saver monitor power management software! The AOC e-Saver features Smart Shutdown functions for your monitors, allows your monitor to timely shutdown when PC unit is at any status (On, Off, Sleep or Screen Saver); the actual shutdown time depends on your preferences (see example below).

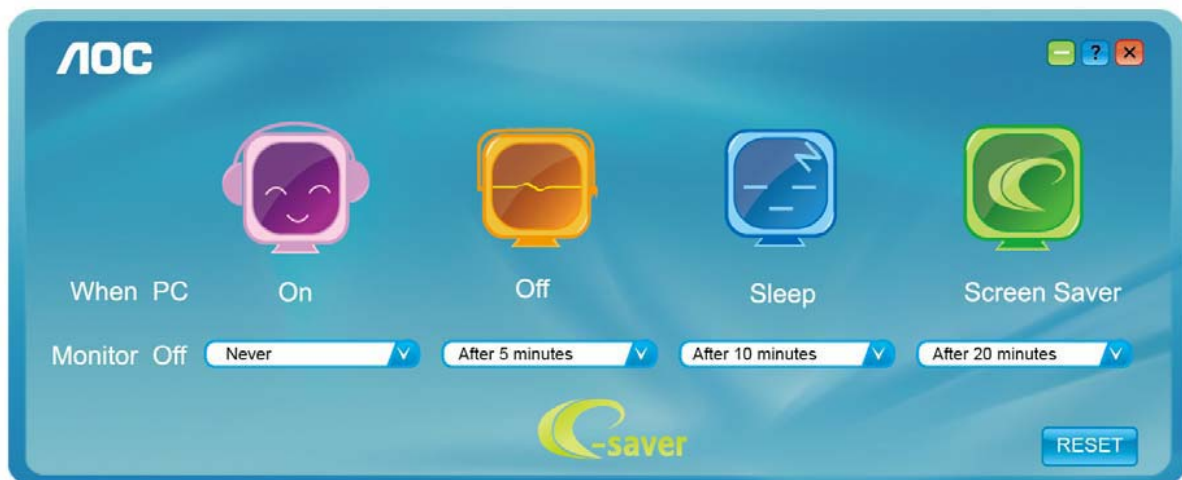
Please click on "driver/e-Saver/setup.exe" to start installing the e-Saver software, follow the install wizard to complete software installation.

Under each of the four PC status, you may choose from the pull-down menu the desired time (in minutes) for your monitor to automatically shutdown. The example above illustrated:

- 1) The monitor will never shutdown when the PC is powered on.
- 2) The monitor will automatically shutdown 5 minutes after the PC is powered off.
- 3) The monitor will automatically shutdown 10 minutes after the PC is in sleep/stand-by mode.
- 4) The monitor will automatically shutdown 20 minutes after the screen saver appears.



You can click "RESET" to set the e-Saver to its default settings like below.



# Screen+



Welcome to "Screen+" software by AOC, Screen+ software is a desktop screen splitting tool, it splits the desktop into different panes, each pane displays a different window. You only need to drag the window to a corresponding pane, when you want to access it. It supports multiple monitor display to make your task easier. Please follow the installation software to install it.



# Troubleshoot

| Problem & Question  | Possible Solutions  |
|---|---|
| <b>Power LED Is Not ON</b>  | Make sure the power button is ON and the Power Cord is properly connected to a grounded power outlet and to the monitor.  |
| <b>No images on the screen</b>  | <ul style="list-style-type: none"> <li>• Is the power cord connected properly?<br/>Check the power cord connection and power supply.</li> <li>• Is the signal cable connected correctly?<br/>(Connected using the signal cable)<br/>Check the signal cable connection.</li> <li>• If the power is on, reboot the computer to see the initial screen (the login screen), which can be seen.<br/>If the initial screen (the login screen) appears, boot the computer in the applicable mode (the safe mode for Windows ME/XP/2000) and then change the frequency of the video card.<br/>(Refer to the Setting the Optimal Resolution)<br/>If the initial screen (the login screen) does not appear, contact the Service Center or your dealer.</li> <li>• Can you see "Input Not Supported" on the screen?<br/>You can see this message when the signal from the video card exceeds the maximum resolution and frequency that the monitor can handle properly.<br/>Adjust the maximum resolution and frequency that the monitor can handle properly.</li> <li>• Make sure the AOC Monitor Drivers are installed.</li> </ul> |
| <b>Picture Is Fuzzy &amp; Has Ghosting Shadowing Problem</b>            | <p>Adjust the Contrast and Brightness Controls.<br/>Press to auto adjust.</p> <p>Make sure you are not using an extension cable or switch box. We recommend plugging the monitor directly to the video card output connector on the back .</p>  |
| <b>Picture Bounces, Flickers Or Wave Pattern Appears In The Picture</b> | <p>Move electrical devices that may cause electrical interference as far away from the monitor as possible.</p> <p>Use the maximum refresh rate your monitor is capable of at the resolution your are using.</p>  |

|  |   |
|--|---|
| <p><b>Monitor Is Stuck In Active Off-Mode"</b></p>                     | <p>The Computer Power Switch should be in the ON position.<br/> The Computer Video Card should be snugly fitted in its slot.<br/> Make sure the monitor's video cable is properly connected to the computer.<br/> Inspect the monitor's video cable and make sure no pin is bent.<br/> Make sure your computer is operational by hitting the CAPS LOCK key on the keyboard while observing the CAPS LOCK LED. The LED should either turn ON or OFF after hitting the CAPS LOCK key.</p> |
| <p><b>Missing one of the primary colors (RED, GREEN, or BLUE)</b></p>  | <p>Inspect the monitor's video cable and make sure that no pin is damaged.<br/> Make sure the monitor's video cable is properly connected to the computer.</p>  |
| <p><b>Screen image is not centered or sized properly</b></p>           | <p>Adjust H-Position and V-Position or press hot-key (Power/AUTO).</p>  |
| <p><b>Picture has color defects (white does not look white)</b></p>    | <p>Adjust RGB color or select desired color temperature.</p>  |
| <p><b>Horizontal or vertical disturbances on the screen</b></p>        | <p>Use Windows 95/98/2000/ME/XP shut-down mode Adjust CLOCK and FOCUS.<br/> Press to auto-adjust.</p>   |
| <p><b>Display not on whole screen in default resolution ration</b></p> | <p>Use I-menu software from CD(or download from AOC <a href="#">official website</a>), select "reset" option to adjust.</p>   |

# Specification

## General Specification

|                          |                               |  |                             |
|--------------------------|-------------------------------|--|-----------------------------|
| Panel                    | Product name                  | I2272PWHUT                                   |                             |
|                          | Driving system                | TFT Color LCD                                |                             |
|                          | Viewable Image Size           | 54.7cm diagonal                              |                             |
|                          | Pixel pitch                   | 0.24825mm(H) x 0.24825m(V)                   |                             |
|                          | Video                         | R, G, B Analog Interface & Digital Interface |                             |
|                          | Separate Sync.                | H/V TTL                                      |                             |
|                          | Display Color                 | 16.7M Colors                                 |                             |
|                          | Dot Clock                     | 170MHz                                       |                             |
| Resolution               | Horizontal scan range         | 30 kHz - 83 kHz                              |                             |
|                          | Horizontal scan Size(Maximum) | 476.65m                                      |                             |
|                          | Vertical scan range           | 50 Hz - 76 Hz                                |                             |
|                          | Vertical scan Size(Maximum)   | 268.11mm                                     |                             |
|                          | Optimal preset resolution     | 1920 x 1080 @60 Hz                           |                             |
|                          | Plug & Play                   | VESA DDC2B/CI                                |                             |
|                          | Input Connector               | D-Sub 15pin; HDMI(MHL)                       |                             |
|                          | Input Video Signal            | Analog: 0.7Vp-p(standard), 75 OHM, TMDS      |                             |
|                          | Power Source                  | 100-240V~, 50/60Hz, 1.5A                     |                             |
|                          | Power Consumption             | Active: 45 W (typical)                       |                             |
|                          |                               | Standby ≤ 5 W                                |                             |
|                          | Off timer                     | 0-24 hrs                                     |                             |
| Speakers                 | 2W x 2                        |  |                             |
| Physical Characteristics | Connector Type                | D-Sub ; HDMI(MHL)                            |                             |
|                          | Signal Cable Type             | Detachable                                   |                             |
|                          | Dimensions                    | 561.93(W)*355(H)*47.1(D)mm                   |                             |
|                          | Weight (only monitor)         | 5.03kg                                       |                             |
| Environmental            | Temperature:                  | Operating                                    | 0° to 40°                   |
|                          |                               | Non-Operating                                | -25°to 55°                  |
|                          | Humidity:                     | Operating                                    | 10% to 85% (non-condensing) |
|                          |                               | Non-Operating                                | 5% to 93% (non-condensing)  |
|                          | Altitude:                     | Operating                                    | 0~ 3658m (0~ 12000 ft )     |
|                          |                               | Non-Operating                                | 0~ 12192m (0~ 40000 ft )    |



|                          |                               |  |                             |
|--------------------------|-------------------------------|--|-----------------------------|
| Panel                    | Product name                  | I2472PWHUT                                   |                             |
|                          | Driving system                | TFT Color LCD                                |                             |
|                          | Viewable Image Size           | 60.0cm diagonal                              |                             |
|                          | Pixel pitch                   | 0.2715mm(H) x 0.2715mm(V)                    |                             |
|                          | Video                         | R, G, B Analog Interface & Digital Interface |                             |
|                          | Separate Sync.                | H/V TTL                                      |                             |
|                          | Display Color                 | 16.7M Colors                                 |                             |
|                          | Dot Clock                     | 170MHz                                       |                             |
| Resolution               | Horizontal scan range         | 30 kHz - 83 kHz                              |                             |
|                          | Horizontal scan Size(Maximum) | 521.28mm                                     |                             |
|                          | Vertical scan range           | 50 Hz - 76 Hz                                |                             |
|                          | Vertical scan Size(Maximum)   | 293.22mm                                     |                             |
|                          | Optimal preset resolution     | 1920 x 1080 @60 Hz                           |                             |
|                          | Plug & Play                   | VESA DDC2B/CI                                |                             |
|                          | Input Connector               | D-Sub 15pin; HDMI(MHL)                       |                             |
|                          | Input Video Signal            | Analog: 0.7Vp-p(standard), 75 OHM, TMDS      |                             |
|                          | Power Source                  | 100-240V~, 50/60Hz, 1.5A                     |                             |
|                          | Power Consumption             | Active: 45 W(typical)                        |                             |
|                          |                               | Standby $\leq$ 5 W                           |                             |
|                          | Off timer                     | 0-24 hrs                                     |                             |
| Speakers                 | 2w x 2                        |  |                             |
| Physical Characteristics | Connector Type                | D-Sub ; HDMI(MHL)                            |                             |
|                          | Signal Cable Type             | Detachable                                   |                             |
|                          | Dimensions                    | 606.73(W)x379.37(H)x49.4(D)mm                |                             |
|                          | Weight (only monitor)         | 6.0kg  |                             |
| Environmental            | Temperature:                  | Operating                                    | 0° to 40°                   |
|                          |                               | Non-Operating                                | -25°to 55°                  |
|                          | Humidity:                     | Operating                                    | 10% to 85% (non-condensing) |
|                          |                               | Non-Operating                                | 5% to 93% (non-condensing)  |
|                          | Altitude:                     | Operating                                    | 0~ 3658m (0~ 12000 ft )     |
|                          |                               | Non-Operating                                | 0~ 12192m (0~ 40000 ft )    |

**Touch screen specifications**

|                       |   |                           |
|-----------------------|---|---------------------------|
| Touch technology      | Infrared rays interception detection            |                           |
| Input Method          | Finger, gloved hand, or any other opaque stylus |                           |
| Touch stylus diameter | >8mm  |                           |
| Resolution            | 32767 x 32767                                   |                           |
| Touch accuracy        | <1.0mm  |                           |
| Operating Systems     | Microsoft Windows 8                             | Multi-Touch(plug & play)  |
|                       | Microsoft Windows 7                             | Multi-Touch(plug & play)  |
|                       | Microsoft Windows Vista                         | Single-Touch(plug & play) |
|                       | Microsoft Windows XP                            | No Support                |

## Preset Display Modes

| Standard      | Resolution       | H. Frequency (kHz) | V. Frequency (Hz) |
|---------------|------------------|--------------------|-------------------|
| VGA           | 640 x 480@60Hz   | 31.469             | 59.940            |
| MAC MODE.VGA  | 640 x 480@67Hz   | 35.000             | 66.667            |
| VGA           | 640 x 480@72Hz   | 37.861             | 72.809            |
| VGA           | 640 x 480@75Hz   | 37.500             | 75.000            |
| IBM MODE DOS  | 720 x 400@70Hz   | 31.469             | 70.087            |
| SVGA          | 800 x 600@56Hz   | 35.156             | 56.250            |
|               | 800 x 600@60Hz   | 37.879             | 60.317            |
|               | 800 x 600@72Hz   | 48.077             | 72.188            |
|               | 800 x 600@75Hz   | 46.875             | 75.000            |
| MAC MODE SVGA | 832 x 624@75Hz   | 49.725             | 74.551            |
| XGA           | 1024 x 768@60Hz  | 48.363             | 60.004            |
|               | 1024 x 768@70Hz  | 56.476             | 70.069            |
|               | 1024 x 768@75Hz  | 60.023             | 75.029            |
| ***           | 1280 x 960@60Hz  | 60.000             | 60.000            |
| SXGA          | 1280 x 1024@60Hz | 63.981             | 60.020            |
|               | 1280 x 1024@75Hz | 79.976             | 75.025            |
| ***           | 1280 x 720@60Hz  | 44.772             | 59.855            |
| WXGA+         | 1440 x 900@60Hz  | 55.935             | 59.876            |
| WSXGA+        | 1680 x 1050@60Hz | 65.290             | 59.950            |
| HD            | 1920 x 1080@60Hz | 67.500             | 60.000            |

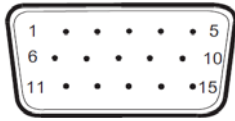
### HDMI Timing

| Format | Resolution  | Vertical frequency |
|--------|-------------|--------------------|
| 480P   | 640 x 480   | 60Hz               |
| 480P   | 720 x 480   | 60Hz               |
| 576P   | 720 x 576   | 50Hz               |
| 720P   | 1280 x 720  | 50Hz,60Hz          |
| 1080P  | 1920 x 1080 | 30Hz,50Hz,60Hz     |

### MHL Timing

| Format | Resolution  | Type | Vertical frequency |
|--------|-------------|------|--------------------|
| 480P   | 640 x 480   | SD   | 60Hz               |
| 480P   | 720 x 480   | SD   | 60Hz               |
| 576P   | 720 x 576   | SD   | 50Hz               |
| 720P   | 1280 x 720  | HD   | 50Hz,60Hz          |
| 1080P  | 1920 x 1080 | HD   | 30Hz               |

# Pin Assignments



**15-Pin Color Display Signal Cable**

| Pin No. | Signal Name  | Pin No. | Signal Name      |
|---------|--------------|---------|------------------|
| 1       | Video-Red    | 9       | +5V              |
| 2       | Video-Green  | 10      | Ground           |
| 3       | Video-Blue   | 11      | N.C.             |
| 4       | N.C.         | 12      | DDC-Serial data  |
| 5       | Detect Cable | 13      | H-sync           |
| 6       | GND-R        | 14      | V-sync           |
| 7       | GND-G        | 15      | DDC-Serial clock |
| 8       | GND-B        |         |                  |



**19-Pin Color Display Signal Cable**

| Pin No. | Signal Name        | Pin No. | Signal Name               | Pin No. | Signal Name     |
|---------|--------------------|---------|---------------------------|---------|-----------------|
| 1       | TMDS Data 2+       | 9       | TMDS Data 0               | 17      | DDC/CEC Ground  |
| 2       | TMDS Data 2 Shield | 10      | TMDS Clock +              | 18      | +5V Power       |
| 3       | TMDS Data 2        | 11      | TMDS Clock Shield         | 19      | Hot Plug Detect |
| 4       | TMDS Data 1+       | 12      | TMDS Clock                |         |                 |
| 5       | TMDS Data 1Shield  | 13      | CEC                       |         |                 |
| 6       | TMDS Data 1        | 14      | Reserved (N.C. on device) |         |                 |
| 7       | TMDS Data 0+       | 15      | SCL                       |         |                 |
| 8       | TMDS Data 0 Shield | 16      | SDA                       |         |                 |

# Plug and Play

## Plug & Play DDC2B Feature

This monitor is equipped with VESA DDC2B capabilities according to the VESA DDC STANDARD. It allows the monitor to inform the host system of its identity and, depending on the level of DDC used, communicate additional information about its display capabilities.

The DDC2B is a bi-directional data channel based on the I2C protocol. The host can request EDID information over the DDC2B channel.

# Regulation

## FCC Notice

### **FCC Class B Radio Frequency Interference Statement WARNING: (FOR FCC CERTIFIED MODELS)**

NOTE: This equipment has been tested and found to comply with the limits for a Class B digital device, pursuant to Part 15 of the FCC Rules. These limits are designed to provide reasonable protection against harmful interference in a residential installation. This equipment generates, uses and can radiate radio frequency energy, and if not installed and used in accordance with the instructions, may cause harmful interference to radio communications. However, there is no guarantee that interference will not occur in a particular installation. If this equipment does cause harmful interference to radio or television reception, which can be determined by turning the equipment off and on, the user is encouraged to try to correct the interference by one or more of the following measures:

Reorient or relocate the receiving antenna.

Increase the separation between the equipment and receiver.

Connect the equipment into an outlet on a circuit different from that to which the receiver is connected.

Consult the dealer or an experienced radio/TV technician for help.

### **NOTICE :**

The changes or modifications not expressly approved by the party responsible for compliance could void the user's authority to operate the equipment.

Shielded interface cables and AC power cord, if any, must be used in order to comply with the emission limits.

The manufacturer is not responsible for any radio or TV interference caused by unauthorized modification to this equipment. It is the responsibilities of the user to correct such interference. It is the responsibility of the user to correct such interference

## WEEE Declaration

Disposal of Waste Equipment by Users in Private Household in the European Union.



This symbol on the product or on its packaging indicates that this product must not be disposed of with your other household waste. Instead, it is your responsibility to dispose of your waste equipment by handing it over to a designated collection point for the recycling of waste electrical and electronic equipment. The separate collection and recycling of your waste equipment at the time of disposal will help to conserve natural resources and ensure that it is recycled in a manner that protects human health and the environment. For more information about where you can drop off your waste equipment for recycling, please contact your local city office, your household waste disposal service or the shop where you purchased the product .

## WEEE Declaration for India



This symbol on the product or on its packaging indicates that this product must not be disposed of with your other household waste. Instead it is your responsibility to dispose of your waste equipment by handing it over to a designated collection point for the recycling of waste electrical and electronic equipment. The separate collection and recycling of your waste equipment at the time of disposal will help to conserve natural resources and ensure that it is recycled in a manner that protects human health and the environment.

For more information about where you can drop off your waste equipment for recycling in India please visit the below web link.

[www.aocindia.com/ewaste.php](http://www.aocindia.com/ewaste.php).

# Service

## Warranty Statement for Europe

### LIMITED THREE-YEAR WARRANTY\*

For AOC LCD Monitors sold within Europe, AOC International (Europe) B.V. warrants this product to be free from defects in material and workmanship for a period of Three (3) years after the original date of consumer purchase. During this period, AOC International (Europe) B.V. will, at its option, either repair the defective product with new or rebuilt parts, or replace it with a new or rebuilt product at no charge except as \*stated below. In the absence of the proof of purchase, the warranty will start 3 months after the date of manufacturing indicated on the product.

If the product appears to be defective, please contact your local dealer or refer to the service and support section on [www.aoc-europe.com](http://www.aoc-europe.com) for the warranty instructions in your country. The freight cost for the warranty is pre-paid by AOC for the delivery and return. Please ensure you provide a dated proof of purchase along with the product and deliver to the AOC Certified or Authorized Service Center under the following condition:

- Make sure the LCD Monitor is packed in a proper carton box (AOC prefers the original carton box to protect your monitor well enough during transport).
- Put the RMA number on the address label
- Put the RMA number on the shipping carton

AOC International (Europe) B.V. will pay the return shipping charges within one of the countries specified within this warranty statement. AOC International (Europe) B.V. is not responsible for any costs associated with the transportation of product across international borders. This includes the international border within the European Union. If the LCD Monitor is not available for collection when the carrier attends, you will be charged a collection fee.

**\* This limited warranty does not cover any losses or damages that occur as a result of:**

- Damages during transport due to improper packaging
- Improper installation or maintenance other than in accordance with AOC's user manual
- Misuse
- Neglect
- Any cause other than ordinary commercial or industrial application
- Adjustment by non-authorized source
- Repair, modification, or installation of options or parts by anyone other than an AOC Certified or Authorized Service Center
- Improper environments like humidity, water damage and dusts
- Damaged by violence, earthquake and terrorist attacks
- Excessive or inadequate heating or air conditioning or electrical power failures, surges, or other irregularities

This limited warranty does not cover any of the product firmware or hardware that you or any third party have modified or altered; you bear the sole responsibility and liability for any such modifications or alteration.



All AOC LCD Monitors are produced according to the ISO 9241-307 Class 1 pixel policy standards.

If your warranty has expired, you still have access to all available service options, but you will be responsible for the cost of service, including parts, labor, shipping (if any) and applicable taxes. AOC Certified or Authorized Service Center will provide you with an estimate of service costs before receiving your authorization to perform service.

ALL EXPRESS AND IMPLIED WARRANTIES FOR THIS PRODUCT (INCLUDING THE WARRANTIES OF MERCHANTABILITY AND FITNESS FOR A PARTICULAR PURPOSE) ARE LIMITED IN DURATION TO A PERIOD OF THREE (3) YEARS FOR PARTS AND LABOR FROM THE ORIGINAL DATE OF CONSUMER PURCHASE. NO WARRANTIES (EITHER EXPRESSED OR IMPLIED) APPLY AFTER THIS PERIOD. AOC INTERNATIONAL (EUROPE) B.V. OBLIGATIONS AND YOUR REMEDIES HEREUNDER ARE SOLELY AND EXCLUSIVELY AS STATED HERE. AOC INTERNATIONAL (EUROPE) B.V. LIABILITY, WHETHER BASED ON CONTRACT, TORT, WARRANTY, STRICT LIABILITY, OR OTHER THEORY, SHALL NOT EXCEED THE PRICE OF THE INDIVIDUAL UNIT WHOSE DEFECT OR DAMAGE IS THE BASIS OF THE CLAIM. IN NO EVENT SHALL AOC INTERNATIONAL (EUROPE) B.V. BE LIABLE FOR ANY LOSS OF PROFITS, LOSS OF USE OR FACILITIES OR EQUIPMENT, OR OTHER INDIRECT, INCIDENTAL, OR CONSEQUENTIAL DAMAGE. SOME STATES DO NOT ALLOW THE EXCLUSION OR LIMITATION OF INCIDENTAL OR CONSEQUENTIAL DAMAGES, SO THE ABOVE LIMITATION MAY NOT APPLY TO YOU. ALTHOUGH THIS LIMITED WARRANTY GIVES YOU SPECIFIC LEGAL RIGHTS, YOU MAY HAVE OTHER RIGHTS, WHICH MAY VARY FROM COUNTRY TO COUNTRY. THIS LIMITED WARRANTY IS ONLY VALID FOR PRODUCTS PURCHASED IN THE MEMBER COUNTRIES OF THE EUROPEAN UNION.

Information in this document is subject to change without notice. For more information, please visit:

<http://www.aoc-europe.com>

# Warranty Statement for Middle East and Africa (MEA)

And

## The Commonwealth of Independent States (CIS)

### LIMITED ONE to THREE YEARS WARRANTY\*

For AOC LCD Monitors sold within the Middle East and Africa (MEA) and the Commonwealth of Independent States (CIS), AOC International (Europe) B.V. warrants this product to be free from defects in material and workmanship for a period of One (1) to Three (3) years from the manufacture date depending on sale country. During this period, AOC International (Europe) B.V. offers a Carry-In (return to Service Center) Warranty Support at an AOC's Authorized Service Center or Dealer and at its option, either repair the defective product with new or rebuilt parts, or replace it with a new or rebuilt product at no charge except as \*stated below. As a Standard Policy, the warranty will be calculated from the manufacture date identified from the product ID serial number, but the total warranty will be Fifteen (15) months to Thirty Nine (39) months from MFD (manufacture date) depending on sale country. Warranty will be considered for exceptional cases that are out of warranty as per the product ID serial number and for such exceptional cases; Original Invoice/Proof Of Purchase Receipt is mandatory.

If the product appears to be defective, please contact your AOC authorized dealer or refer to the service and support section on AOC's website for the warranty instructions in your country:

- Egypt: [http://aocmonitorap.com/egypt\\_eng](http://aocmonitorap.com/egypt_eng)
- CIS Central Asia: <http://aocmonitorap.com/ciscentral>
- Middle East: <http://aocmonitorap.com/middleeast>
- South Africa: <http://aocmonitorap.com/southafrica>
- Saudi Arabia: <http://aocmonitorap.com/saudiarabia>

Please ensure you provide a dated proof of purchase along with the product and deliver to the AOC Authorized Service Center or Dealer under the following condition:

- Make sure the LCD Monitor is packed in a proper carton box (AOC prefers the original carton box to protect your monitor well enough during transport).
- Put the RMA number on the address label
- Put the RMA number on the shipping carton

\* This limited warranty does not cover any losses or damages that occur as a result of:

- Damages during transport due to improper packaging
- Improper installation or maintenance other than in accordance with AOC's user manual
- Misuse
- Neglect
- Any cause other than ordinary commercial or industrial application
- Adjustment by non-authorized source

- Repair, modification, or installation of options or parts by anyone other than an AOC Certified or Authorized Service Center
- Improper environments like humidity, water damage and dusts
- Damaged by violence, earthquakes and terrorist attacks
- Excessive or inadequate heating or air conditioning or electrical powers failures, surges, or other irregularities

This limited warranty does not cover any of the product firmware or hardware that you or any third party have modified or altered; you bear the sole responsibility and liability for any such modifications or alteration.

All AOC LCD Monitors are produced according to the ISO 9241-307 Class 1 pixel policy standards.

If your warranty has expired, you still have access to all available service options, but you will be responsible for the cost of service, including parts, labor, shipping (if any) and applicable taxes. AOC Certified, Authorized Service Center or dealer will provide you with an estimate of service costs before receiving your authorization to perform service.

ALL EXPRESS AND IMPLIED WARRANTIES FOR THIS PRODUCT (INCLUDING THE WARRANTIES OF MERCHANTABILITY AND FITNESS FOR A PARTICULAR PURPOSE) ARE LIMITED IN DURATION TO A PERIOD OF ONE (1) to THREE (3) YEARS FOR PARTS AND LABOR FROM THE ORIGINAL DATE OF CONSUMER PURCHASE. NO WARRANTIES (EITHER EXPRESSED OR IMPLIED) APPLY AFTER THIS PERIOD. AOC INTERNATIONAL (EUROPE) B.V. OBLIGATIONS AND YOUR REMEDIES HEREUNDER ARE SOLELY AND EXCLUSIVELY AS STATED HERE. AOC INTERNATIONAL (EUROPE) B.V. LIABILITY, WHETHER BASED ON CONTRACT, TORT, WARRANTY, STRICT LIABILITY, OR OTHER THEORY, SHALL NOT EXCEED THE PRICE OF THE INDIVIDUAL UNIT WHOSE DEFECT OR DAMAGE IS THE BASIS OF THE CLAIM. IN NO EVENT SHALL AOC INTERNATIONAL (EUROPE) B.V. BE LIABLE FOR ANY LOSS OF PROFITS, LOSS OF USE OR FACILITIES OR EQUIPMENT, OR OTHER INDIRECT, INCIDENTAL, OR CONSEQUENTIAL DAMAGE. SOME STATES DO NOT ALLOW THE EXCLUSION OR LIMITATION OF INCIDENTAL OR CONSEQUENTIAL DAMAGES, SO THE ABOVE LIMITATION MAY NOT APPLY TO YOU. ALTHOUGH THIS LIMITED WARRANTY GIVES YOU SPECIFIC LEGAL RIGHTS, YOU MAY HAVE OTHER RIGHTS, WHICH MAY VARY FROM COUNTRY TO COUNTRY. THIS LIMITED WARRANTY IS ONLY VALID FOR PRODUCTS PURCHASED IN THE MEMBER COUNTRIES OF THE EUROPEAN UNION.

Information in this document is subject to change without notice. For more information, please visit:

<http://www.aocmonitorap.com>



# AOC International (Europe) B.V.

Prins Bernhardplein 200 / 6th floor, Amsterdam, The Netherlands

Tel: +31 (0)20 504 6962 • Fax: +31 (0)20 5046933

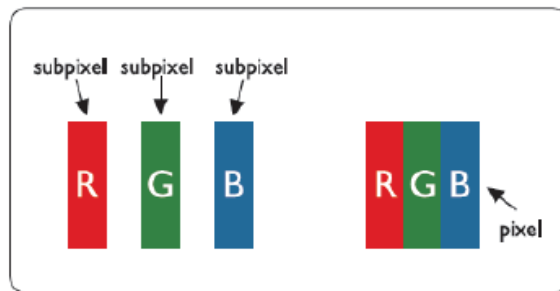
## AOC Pixel Policy ISO 9241-307 Class 1

July 25<sup>th</sup>, 2013

AOC strives to deliver the highest quality products. We use some of the industry’s most advanced manufacturing processes and practice stringent quality control. However, pixel or sub pixel defects on the TFT monitor panels used in flat panel monitors are sometimes unavoidable. No manufacturer can guarantee that all panels will be free from pixel defects, but AOC guarantees that any monitor with an unacceptable number of defects will be repaired or replaced under warranty. This Pixel Policy explains the different types of pixel defects and defines acceptable defect levels for each type. In order to qualify for repair or replacement under warranty, the number of pixel defects on a TFT monitor panel must exceed these acceptable levels.

### Pixels and Sub Pixel Definition

A pixel, or picture element, is composed of three sub pixels in the primary colors of red, green and blue. When all sub pixels of pixel are lit, the three colored sub pixel together appear as a single white pixel. When all are dark, the three colored sub pixels together appear as a single black pixel.



### Types of Pixel Defects

- Bright Dot Defects: the monitor displays a dark pattern, sub pixels or pixels are always lit or “on”
- Black Dot Defects: the monitor displays a light pattern, sub pixels or pixels are always dark or “off”.

| ISO 9241-307<br>Pixel Defect Class | Defect Type 1<br>Bright Pixel | Defect Type 2<br>Black Pixel | Defect Type 3<br>Bright Sub pixel | Defect Type 4 Black<br>Sub pixel |
|------------------------------------|-------------------------------|------------------------------|-----------------------------------|----------------------------------|
| Class 1                            | 1                             | 1                            | 2<br>1<br>0                       | +<br>+<br>+                      |
|                                    |                               |                              |                                   | 1<br>3<br>5                      |

## Warranty Statement for North & South America (excluding Brazil)

### WARRANTY STATEMENT for AOC Color Monitors

Including those Sold within North America as Specified

Envision Peripherals, Inc. warrants this product to be free from defects in material and workmanship for a period of three (3) years for parts & labor and one (1) year for CRT Tube or LCD Panel after the original date of consumer purchase. During this period, EPI ( EPI is the abbreviation of Envision Peripherals, Inc. ) will, at its option, either repair the defective product with new or rebuilt parts, or replace it with a new or rebuilt product at no charge except as \*stated below. The parts or product that are replaced become the property of EPI.

In the USA to obtain service under this limited warranty, call EPI for the name of the Authorized Service Center closest to your area. Deliver the product freight pre-paid, along with the dated proof of purchase, to the EPI Authorized Service Center. If you cannot deliver the product in person:

- Pack it in its original shipping container (or equivalent)
- Put the RMA number on the address label
- Put the RMA number on the shipping carton
- Insure it (or assume the risk of loss/damage during shipment)
- Pay all shipping charges

EPI is not responsible for damage to inbound product that was not properly packaged.

EPI will pay the return shipment charges within one of the countries specified within this warranty statement. EPI is not responsible for any costs associated with the transportation of product across international borders. This includes the international borders of the countries within this warranty statements.

In the United States and Canada contact your Dealer or EPI Customer Service, RMA Department at the toll free number (888) 662-9888. Or you can request an RMA Number online at [www.aoc.com/na-warranty](http://www.aoc.com/na-warranty).

\* This limited warranty does not cover any losses or damages that occur as a result of:

- Shipping or improper installation or maintenance
- Misuse
- Neglect
- Any cause other than ordinary commercial or industrial application
- Adjustment by non-authorized source
- Repair, modification, or installation of options or parts by anyone other than an EPI Authorized Service Center
- Improper environment
- Excessive or inadequate heating or air conditioning or electrical power failures, surges, or other irregularities

This three-year limited warranty does not cover any of the product's firmware or hardware that you or any third party have modified or altered; you bear the sole responsibility and liability for any such modification or alteration.

ALL EXPRESS AND IMPLIED WARRANTIES FOR THIS PRODUCT (INCLUDING THE WARRANTIES OF

MERCHANTABILITY AND FITNESS FOR A PARTICULAR PURPOSE) ARE LIMITED IN DURATION TO A PERIOD OF THREE (3) YEARS FOR PARTS AND LABOR AND ONE (1) YEAR FOR CRT TUBE OR LCD PANEL FROM THE ORIGINAL DATE OF CONSUMER PURCHASE. NO WARRANTIES (EITHER EXPRESSED OR IMPLIED) APPLY AFTER THIS PERIOD. IN THE UNITED STATES OF AMERICA, SOME STATES DO NOT ALLOW LIMITATIONS ON HOW LONG AN IMPLIED WARRANTY LASTS, SO THE ABOVE LIMITATIONS MAY NOT APPLY TO YOU.

EPI OBLIGATIONS AND YOUR REMEDIES HEREUNDER ARE SOLELY AND EXCLUSIVELY AS STATED HERE. EPI' LIABILITY, WHETHER BASED ON CONTRACT, TORT, WARRANTY, STRICT LIABILITY, OR OTHER THEORY, SHALL NOT EXCEED THE PRICE OF THE INDIVIDUAL UNIT WHOSE DEFECT OR DAMAGE IS THE BASIS OF THE CLAIM. IN NO EVENT SHALL ENVISION PERIPHERALS, INC. BE LIABLE FOR ANY LOSS OF PROFITS, LOSS OF USE OR FACILITIES OR EQUIPMENT OR OTHER INDIRECT, INCIDENTAL, OR CONSEQUENTIAL DAMAGE. IN THE UNITED STATES OF AMERICA, SOME STATES DO NOT ALLOW THE EXCLUSION OR LIMITATION OF INCIDENTAL OR CONSEQUENTIAL DAMAGES. SO THE ABOVE LIMITATION MAY NOT APPLY TO YOU. ALTHOUGH THIS LIMITED WARRANTY GIVES YOU SPECIFIC LEGAL RIGHTS. YOU MAY HAVE OTHER RIGHTS WHICH MAY VARY FROM STATE TO STATE.

In the United States of America, this limited warranty is only valid for Products purchased in the Continental United States, Alaska, and Hawaii.

Outside the United States of America, this limited warranty is only valid for Products purchased in Canada.

Information in this document is subject to change without notice.

For more details, please visit:

**USA:** <http://us.aoc.com/support/warranty>  
**ARGENTINA:** <http://ar.aoc.com/support/warranty>  
**BOLIVIA:** <http://bo.aoc.com/support/warranty>  
**CHILE:** <http://cl.aoc.com/support/warranty>  
**COLOMBIA:** <http://co.aoc.com/warranty>  
**COSTA RICA:** <http://cr.aoc.com/support/warranty>  
**DOMINICAN REPUBLIC:** <http://do.aoc.com/support/warranty>  
**ECUADOR:** <http://ec.aoc.com/support/warranty>  
**EL SALVADOR:** <http://sv.aoc.com/support/warranty>  
**GUATEMALA:** <http://gt.aoc.com/support/warranty>  
**HONDURAS:** <http://hn.aoc.com/support/warranty>  
**NICARAGUA:** <http://ni.aoc.com/support/warranty>  
**PANAMA:** <http://pa.aoc.com/support/warranty>  
**PARAGUAY:** <http://py.aoc.com/support/warranty>  
**PERU:** <http://pe.aoc.com/support/warranty>  
**URUGUAY:** <http://pe.aoc.com/warranty>  
**VENEZUELA:** <http://ve.aoc.com/support/warranty>  
**IF COUNTRY NOT LISTED:** <http://latin.aoc.com/warranty>