

E11420  
First Edition  
March 2016

**HDMI™**  
HIGH-DEFINITION MULTIMEDIA INTERFACE

# IN SEARCH OF INCREDIBLE

User Guide

**ASUS**

## ASUS DisplayWidget

ASUS DisplayWidget allows you to quickly access various OSD settings for your monitor right from the desktop. Simply install ASUS DisplayWidget and the necessary drivers for your monitor to get started.

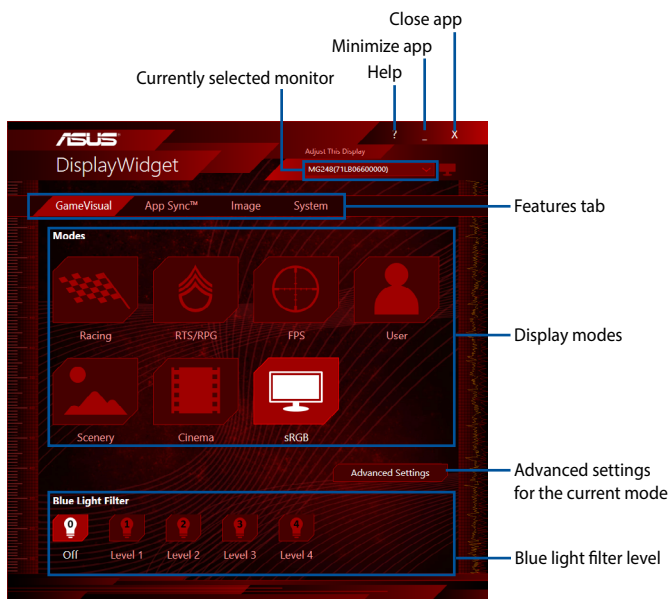
---

### NOTE:

- To download ASUS DisplayWidget and view more information, visit <https://www.asus.com/support/>
  - ASUS DisplayWidget supports Windows® 7 and above.
  - Supported features may vary per model.
- 

## GameVisual

This feature allows you access to various display modes and blue light filter options. Click on a display mode or blue light filter to apply that setting.



---

**NOTE:** Click **Advanced Settings** to access more settings for the current mode.

---

## Advanced Settings

Fine tune your display mode settings for the ultimate viewing experience. You can also import and export your settings to share with your friends.

To access more settings for a selected display mode:

1. Select a display mode, then click **Advanced Settings**.
2. Customize the settings to your preference.
3. Click **Back to GameVisual** to complete.

---

### NOTE:

- Advanced Settings will only display settings for the currently selected mode.
  - Available settings will vary per model or display mode.
- 



## Importing and exporting settings

To import settings:

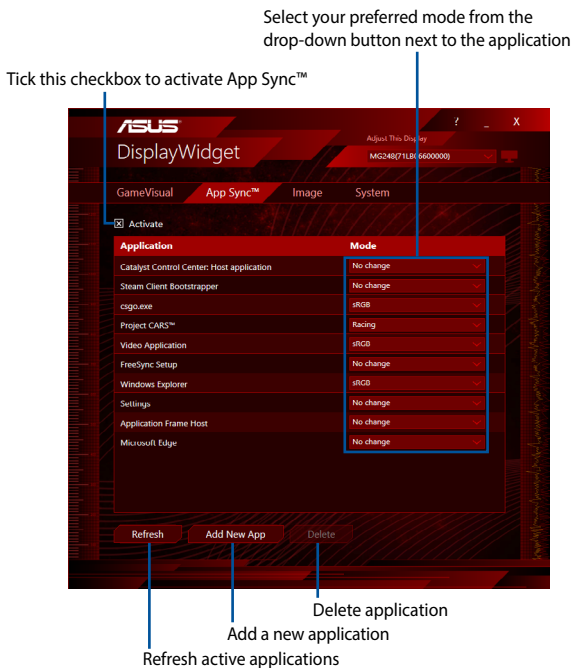
1. Select a display mode, then click **Advanced Settings**.
2. Click **Import**, then locate the .axml file.

To export settings:

1. Select a display mode, then click **Advanced Settings**.
2. Click **Export**, then save the .axml file.

## App Sync™

App Sync™ can automatically sync GameVisual settings for an application whenever it is the main window. Choose applications that are frequently used and set GameVisual settings to it.



## Setting up applications in App Sync™

To set a display mode for an active application:

1. Navigate to the App Sync™ tab.
2. From the application list, select your preferred display mode from the drop-down button next to the application.

---

**NOTE:** Click **Refresh** to update the active applications.

---

To set a display mode for a non-active application:

1. Navigate to the App Sync™ tab.
2. Click **Add New App**, then locate the .exe file of the application.

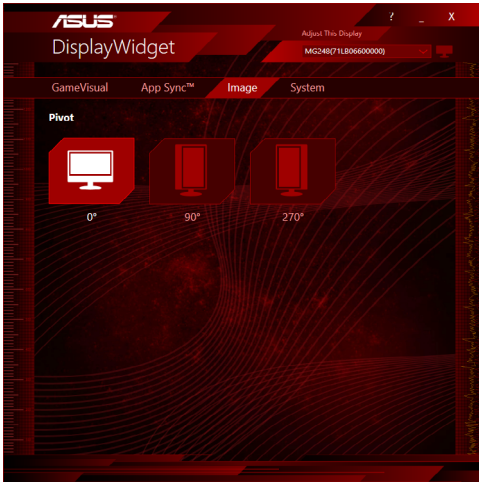
## Image

Turn the pivot angle or adjust the aspect ratio to fit your monitor setup. Click on an option to apply the setting immediately.

---

**NOTE:** Available settings will vary per model or display mode.

---



## System

The system page shows you information about your monitor, and allows you to customize the DisplayWidget settings to your preference. You can also check for updates and recommended resolutions.



