

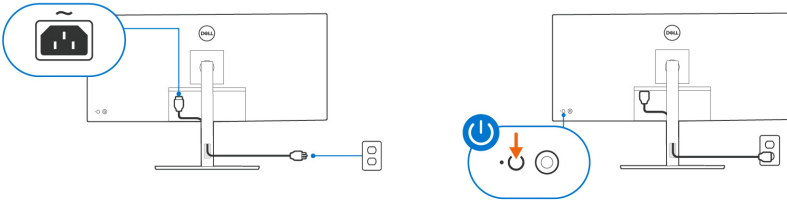
Firmware Update Instruction User's Guide

Overview

Firmware update tool is an application used to update monitor firmware.

Pre-requisites for firmware update

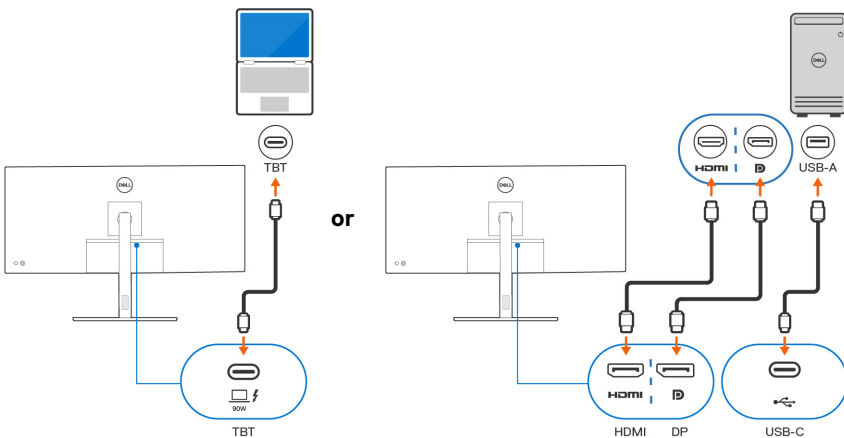
1. Connect the monitor to a power source, during the firmware update process.











NOTE: Ensure that all other video cables between the monitor and the computer are unplugged.

2. Connect the supplied Thunderbolt™ 4 passive cable between the monitor and your computer. Do not use any other device between this connection.

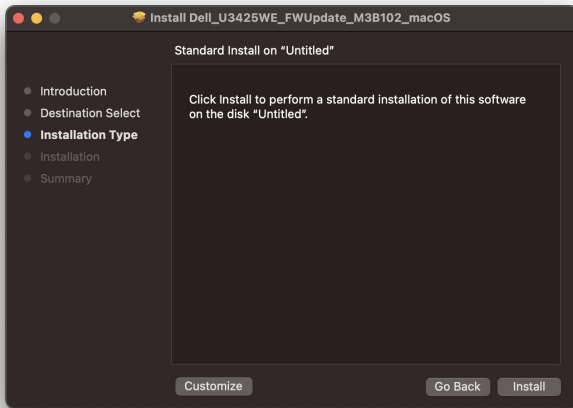
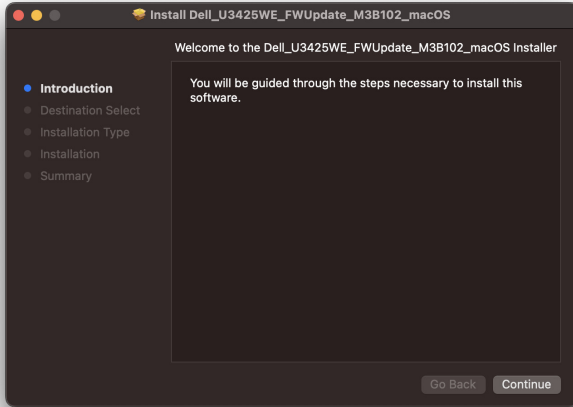
If you are not using a Thunderbolt™ 4-equipped computer, use the supplied DisplayPort or HDMI cable to connect the monitor and computer, and then connect the supplied USB Type-A to USB Type-C cable from your computer to the USB-C upstream port of the monitor.

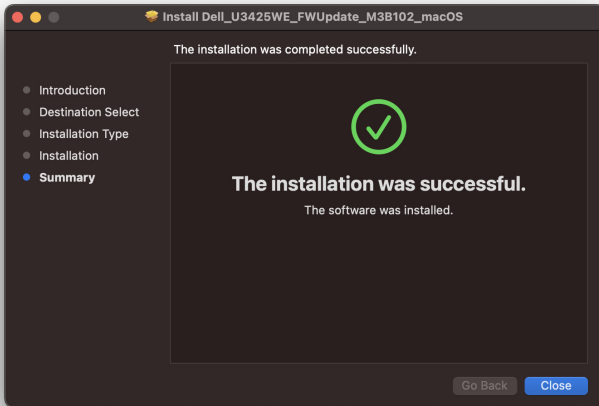
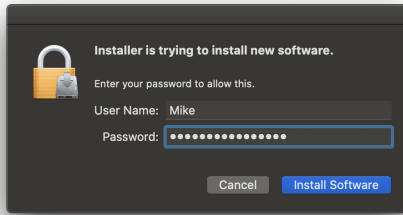


-  **NOTE:** Ensure that other USB cables and USB devices between the monitor and the computer are unplugged.
-  **NOTE:** Disconnect all other monitors from the notebook or desktop. This will ensure that only one display is connected while conducting firmware update.
-  **NOTE:** It is recommended to update the firmware with a notebook as the monitor screen may go blank during the firmware update process.
-  **NOTE:** Please disconnect the monitor when upgrading Docking firmware.
-  **NOTE:** For faster firmware update, use Thunderbolt™ 4 connection to the monitor if it is available. Ensure to select “Always Connect” in Thunderbolt™ software.
- 3. Exit Dell Display and Peripheral Manager (DDPM) and Dell Color Management applications before conducting firmware update.
-  **NOTE:** Do not unplug the cables till the updating process is complete.
-  **NOTE:** Ensure to disable sleep mode before you launch the firmware update.
-  **NOTE:** Update one monitor at a time. Do not conduct firmware update on multiple monitors at a given time.

Installation

1. Download the pkg file (for example, Dell_U3425WE_FWUpdate_M3B102_macOS.pkg) and double-click to launch the installer.
2. Follow the installation steps and input the administrator password if required.

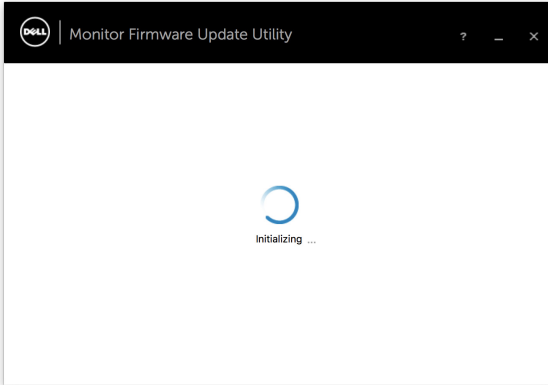




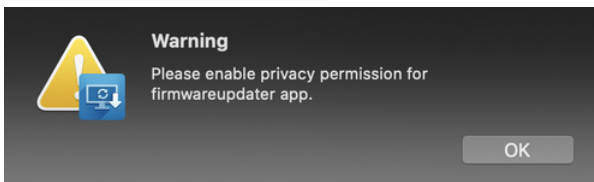
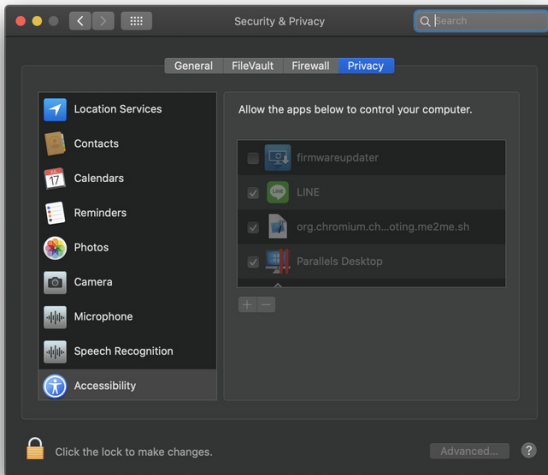
3. The **Firmware Update Utility** is launched automatically once the installation is complete.

Updating the firmware

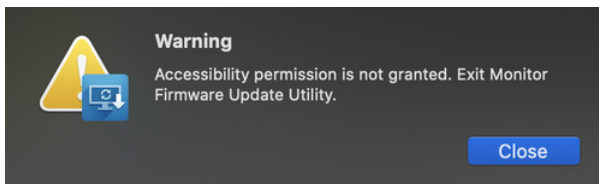
1. Initializing for device status.

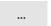


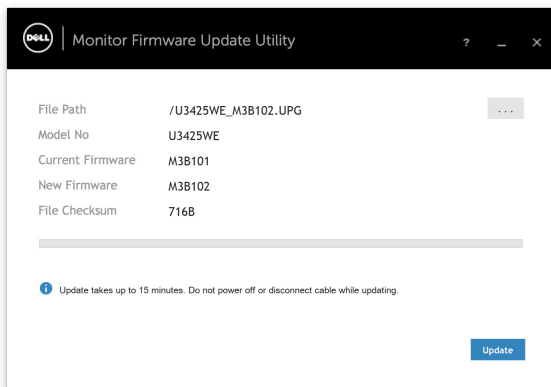
2. For macOS 11 Big Sur, **Security & Privacy** setting dialogue is opened automatically. Please enable privacy permission for firmwareupdater.



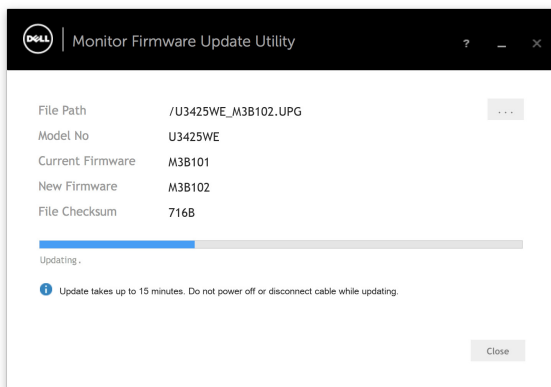
If **Accessibility** permission is not granted, the following message appears. Press **Close** to exit firmwareupdater and monitor firmware update will not proceed.



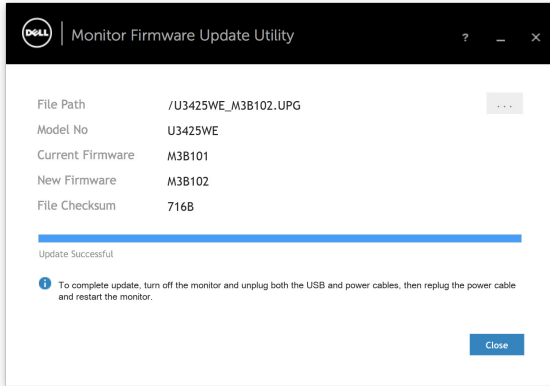
3. The utility loads the firmware file automatically. Or, you can select your file manually by clicking  and navigate to the UPG firmware file.






4. Click **Update**.
The utility will start updating the new firmware.



5. Once update is complete, follow the on-screen instructions to re-start your monitor.



-  **NOTE:** Update takes up to 15 minutes. Do not power off or disconnect cable while updating.
-  **NOTE:** The monitor screen may blank and only show update progress bar while updating. Please wait and don't close the Monitor Firmware Update Utility.
-  **NOTE:** If you experience problems during or after update, refer to [Troubleshooting](#).

Troubleshooting

Errors	Possible Solutions
File permission error	<ul style="list-style-type: none">• Save the firmware file in another location.• Check if the firmware file has read permission.• Check if you have owner rights for the firmware file.• Run the utility with administrator privileges.
Monitor not detected	Follow Pre-requisites for firmware update to check if the power and USB cables are properly connected to your computer and reopen the Monitor Firmware Update Utility.
Write protection error	Re-try updating with the following steps:
Flash erase error	1. Close the Monitor Firmware Update Utility.
Update error	2. Turn off the monitor by pressing the power button.
Monitor firmware checksum error	3. Re-plug the power cord.
	4. Turn on the monitor.
	5. Try updating again with the Monitor Firmware Update Utility.
USB device inactive after new firmware installation.	Re-try the updating steps from 1 to 4 as stated above.
A warning message appears: "Firmware update was not completed. Please update the monitor firmware again."	Re-try updating the monitor's firmware. Do not turn off the ISP tool until the update is complete.