

# Dell UltraSharp U2419HC/U2719DC Monitor User's Guide

Model: U2419HC/U2719DC  
Regulatory model: U2419HCt/U2719DCt





**NOTE:** A NOTE indicates important information that helps you make better use of your computer.



**CAUTION:** A CAUTION indicates potential damage to hardware or loss of data if instructions are not followed.



**WARNING:** A WARNING indicates a potential for property damage, personal injury, or death.

**Copyright © 2018 Dell Inc. or its subsidiaries. All rights reserved.** Dell, EMC, and other trademarks are trademarks of Dell Inc. or its subsidiaries. Other trademarks may be trademarks of their respective owners.

2018 – 08

Rev. A00

# Contents

<b>About Your Monitor</b> .....	<b>5</b>
Package Contents .....	5
Product Features .....	6
Identifying Parts and Controls .....	7
Monitor Specifications .....	10
Plug-and-Play .....	23
LCD Monitor Quality and Pixel Policy .....	23
<b>Setting Up the Monitor</b> .....	<b>24</b>
Attaching the Stand .....	24
Using the Tilt, Swivel, and Vertical Extension .....	26
Adjusting the Rotation Display Settings of Your System .....	27
Connecting Your Monitor .....	28
Organizing Your Cables .....	30
Removing the Monitor Stand .....	31
Wall Mounting (Optional) .....	31
<b>Operating the Monitor</b> .....	<b>32</b>
Turning on the Monitor .....	32
Using the Front Panel Controls .....	32
Using the On-Screen Display (OSD) Menu .....	35



**Troubleshooting . . . . . 48**

- Self-Test . . . . . 48
- Built-in Diagnostics . . . . . 49
- Common Problems . . . . . 50
- Product Specific Problems. . . . . 51

**Appendix. . . . . 53**


- Safety Instructions. . . . . 53
- FCC Notices (U.S. only) and Other Regulatory Information . . . . . 53
- Contacting Dell . . . . . 53
- Setting Up Your Monitor . . . . . 54
- Maintenance Guidelines . . . . . 56



# About Your Monitor


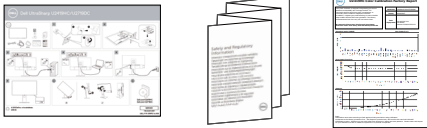
## Package Contents

Your monitor ships with the components shown below. Make sure that you have received all the components and [contact Dell](#) if something is missing.

 **NOTE:** Some items may be optional and may not ship with your monitor. Some features or media may not be available in certain countries.

	Monitor
	Stand riser
	Stand base
	Power cable (varies by country)
	USB Type-C cable (C to C)



	<p>DP cable</p>
	<ul style="list-style-type: none"> <li>• Quick Setup Guide</li> <li>• Safety, Environmental, and Regulatory Information</li> <li>• Factory Calibration Report</li> </ul>

## Product Features

The **Dell UltraSharp U2419HC/U2719DC** monitor has an active matrix, thinfilm transistor (TFT), liquid crystal display (LCD), and LED backlight. The monitor features include:

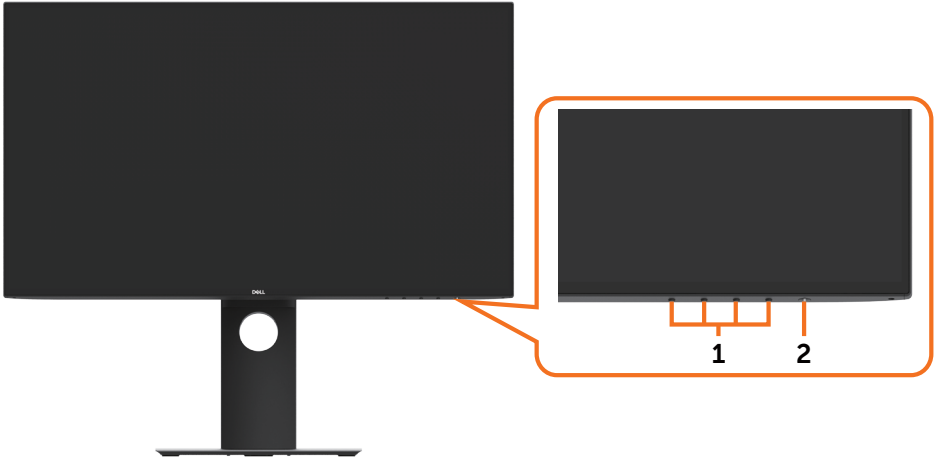
- **U2419HC:** 60.47 cm (23.8-inch) active area display (Measured diagonally) 1920 x 1080 (16:9) resolution, plus full-screen support for lower resolutions.
- **U2719DC:** 68.47 cm (27-inch) active area display (Measured diagonally) 2560 x 1440 (16:9) resolution, plus full-screen support for lower resolutions.
- Wide viewing angles with 99% sRGB color with an average Delta E < 2.
- Tilt, swivel, pivot and vertical extension adjustment capabilities.
- Removable pedestal and Video Electronics Standards Association (VESA™) 100 mm mounting holes for flexible mounting solutions.
- Ultra-thin bezel minimizes the bezel gap in multi-monitor usage, enabling easier set up with an elegant viewing experience.
- Extensive digital connectivity with DP helps future-proof your monitor.
- Single USB Type-C to supply power to compatible notebook while receiving video signal.
- Plug and play capability if supported by your system.
- On-Screen Display (OSD) adjustments for ease of set-up and screen optimization.
- Security lock slot.
- 0.3 W standby power when in the sleep mode.
- Optimize eye comfort with a flicker-free screen.

NOTE: The possible long-term effects of blue light emission from the monitor may cause damage to the eyes, including eye fatigue or digital eye strain. ComfortView feature is designed to reduce the amount of blue light emitted from the monitor to optimize eye comfort.



# Identifying Parts and Controls

## Front view



Label	Description
1	Function buttons (For more information, see <a href="#">Operating the Monitor</a> )
2	Power on/off button (with LED indicator)



## Back View



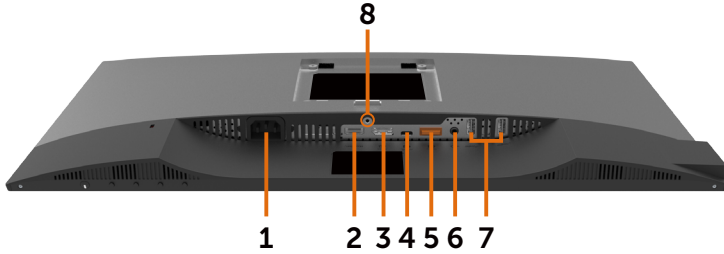
Label	Description	Use
1	VESA mounting holes (100 mm x 100 mm-behind attached VESA cover)	Wall mount monitor using VESA-compatible wall mount kit (100 mm x 100 mm).
2	Regulatory label	Lists the regulatory approvals.
3	Stand release button	Release stand from monitor.
4	Security lock slot	Secures monitor with security cable lock (sold separately).
5	Barcode, serial number, and Service Tag label	Refer to this label if you need to contact Dell for technical support.
6	Cable management slot	Use to organize cables by placing them through the slot.



## Side View





## Bottom View



Label	Description	Use
1	AC power port	To connect the monitor power cable.
2	HDMI port	Connect your computer with HDMI cable (optional).
3	DP port (in)	Connect your computer with DP cable.
4	USB Type-C/DisplayPort	<p>Connect to your computer using the USB Type-C cable.</p> <p>The USB 3.1 Type-C port offer the fastest transfer rate and the alternate mode with DP 1.4 support the maximum resolution of 1920 x1080 at 60Hz(U2419HC) and 2560 x 1440 at 60Hz(U2719DC), PD 20V/3.25A, 15V/3A, 9V/3A, 5V/3A.</p> <p><b>NOTE:</b> USB Type-C is not supported on Windows versions that are prior to Windows 10.</p>
5	DP port (out) 	<p>DP output for MST (multi-stream transport) capable monitor. To enable MST, refer to instruction on section “<a href="#">Connecting the Monitor for DP MST Function</a>”.</p> <p><b>NOTE:</b> Remove the rubber plug when using DP out connector.</p>
6	Audio line-out port	<p>Connect speakers to playback audio coming through USB Type-C or DP audio channels.</p> <p>Only supports 2-channel audio.</p> <p><b>NOTE:</b> The audio line-out port does not support headphones.</p>
7	USB downstream ports (4)	<p>Connect your USB device. You can use these ports only after you have connected the USB cable (Type-C to Type-C) from the computer to the monitor. Port with  battery icon supports Battery Charging Rev. 1.2.</p>
8	Stand lock	Lock the stand to the monitor using a M3 x 6 mm (U2719DC)/ M3 x 8 mm (U2419HC) screw (screw not included).



# Monitor Specifications

Model	U2419HC	U2719DC
Screen type	Active matrix - TFT LCD	Active matrix - TFT LCD
Panel Type	In-plane switching Technology	In-plane switching Technology
Aspect ratio	16:9	16:9
Viewable image dimensions		
Diagonal	60.47 cm (23.8 inches)	68.47 cm (27 inches)
Active Area		
Horizontal	527.04 mm (20.75 inches)	596.74 mm (23.49 inches)
Vertical	296.46 mm (11.67 inches)	335.66 mm (13.21 inches)
Area	156246.3 mm <sup>2</sup> (242.15 inches <sup>2</sup> )	200301.7 mm <sup>2</sup> (310.30 inches <sup>2</sup> )
Pixel pitch	0.2745 mm x 0.2745 mm	0.233 mm x 0.233 mm
Pixel per inch (PPI)	92.5	109
Viewing angle		
Horizontal	178° (typical)	178° (typical)
Vertical	178° (typical)	178° (typical)
Brightness	250 cd/m <sup>2</sup> (typical)	350 cd/m <sup>2</sup> (typical)
Contrast ratio	1000 to 1 (typical)	1000 to 1 (typical)
Display screen coating	Anti-glare treatment of the front polarizer (3H) hard coating	Anti-glare treatment of the front polarizer (3H) hard coating
Backlight	LED	LED
Response Time (Gray to Gray)	5 ms (FAST mode) 8 ms (NORMAL mode)	5 ms (FAST mode) 8 ms (NORMAL mode)
Color depth	16.7 million colors	16.7 million colors
Color gamut*	99% sRGB 99% REC709 85% DCI-P3	99% sRGB 99% REC709 85% DCI-P3
Calibration accuracy	Delta E < 2 (average)	Delta E < 2 (average)



Connectivity	<ul style="list-style-type: none"> <li>• 1 x DP 1.4 (HDCP 1.4)</li> <li>• 1 x HDMI1.4 (HDCP 1.4)</li> <li>• 1 x USB Type-C (Alternate mode with DisplayPort 1.4, USB 3.1 upstream port, Power Delivery PD up to 65 W)</li> <li>• 1 x DP (Out) with MST (HDCP 1.4)</li> <li>• 2 x USB 3.0 downstream port</li> <li>• 2 x USB 3.0 with BC1.2 charging capability at 2A (max)</li> <li>• 1 x Analog 2.0 audio line out (3.5mm jack)</li> </ul>	<ul style="list-style-type: none"> <li>• 1 x DP 1.4 (HDCP 1.4)</li> <li>• 1 x HDMI1.4 (HDCP 1.4)</li> <li>• 1 x USB Type-C (Alternate mode with DisplayPort 1.4, USB 3.1 upstream port, Power Delivery PD up to 65 W)</li> <li>• 1 x DP (Out) with MST (HDCP 1.4)</li> <li>• 2 x USB 3.0 downstream port</li> <li>• 2 x USB 3.0 with BC1.2 charging capability at 2A (max)</li> <li>• 1 x Analog 2.0 audio line out (3.5mm jack)</li> </ul>
Border width (edge of monitor to active area)	5.0 mm (Top) 5.1 mm (Left/Right) 8.0 mm (Bottom)	6.90 mm (Top) 6.90 mm (Left/Right) 8.1 mm (Bottom)
Adjustability		
Height adjustable stand	130 mm	130 mm
Tilt	-5° to 21°	-5° to 21°
Swivel	-40° to 40°	-40° to 40°
Cable management	Yes	Yes
Dell Display Manager (DDM)Compatibility	Easy Arrange and other key features	Easy Arrange and other key features
Security	Security lock slot (cable lock sold separately) Anti-theft stand lock slot (to panel)	Security lock slot (cable lock sold separately) Anti-theft stand lock slot (to panel)

\* At panel native only, under Custom Mode preset.

## Resolution Specifications

Model	U2419HC	U2719DC
Horizontal scan range	30 khz to 83khz	30 khz to 90khz
Vertical scan range	56 Hz to 76 Hz	56 Hz to 76 Hz
Maximum preset resolution	1920 x 1080 at 60 Hz	2560 x 1440 at 60 Hz
Video display capabilities (DP & USB Type-C playback)	480i, 480p, 576i, 576p, 720p, 1080i, 1080p	480i, 480p, 576i, 576p, 720p, 1080i, 1080p



# Preset Display Modes

## U2419HC

Display Mode	Horizontal Frequency (kHz)	Vertical Frequency (Hz)	Pixel Clock (MHz)	Sync Polarity (Horizontal/Vertical)
720 x 400	31.5	70.0	28.3	-/+
VESA, 640 x 480	31.5	60.0	25.2	-/-
VESA, 640 x 480	37.5	75.0	31.5	-/-
VESA, 800 x 600	37.9	60.3	40.0	+/+
VESA, 800 x 600	46.9	75.0	49.5	+/+
VESA, 1024 x 768	48.4	60.0	65.0	-/-
VESA, 1024 x 768	60.0	75.0	78.8	+/+
VESA, 1152 x 864	67.5	75.0	108.0	+/+
VESA, 1280 x 1024	64.0	60.0	108.0	+/+
VESA, 1280 x 1024	80.0	75.0	135.0	+/+
VESA, 1600 x 900	60.0	60.0	108.0	-/+
VESA, 1920 x 1080	67.5	60.0	148.5	+/+

## U2719DC

Display Mode	Horizontal Frequency (kHz)	Vertical Frequency (Hz)	Pixel Clock (MHz)	Sync Polarity (Horizontal/Vertical)
720 x 400	31.5	70.0	28.3	-/+
VESA, 640 x 480	31.5	60.0	25.2	-/-
VESA, 640 x 480	37.5	75.0	31.5	-/-
VESA, 800 x 600	37.9	60.3	40.0	+/+
VESA, 800 x 600	46.9	75.0	49.5	+/+
VESA, 1024 x 768	48.4	60.0	65.0	-/-
VESA, 1024 x 768	60.0	75.0	78.8	+/+
VESA, 1152 x 864	67.5	75.0	108.0	+/+
VESA, 1280 x 1024	64.0	60.0	108.0	+/+
VESA, 1280 x 1024	80.0	75.0	135.0	+/+
VESA, 1600 x 1200	75.0	60.0	162.0	+/+
VESA, 1920 x 1080	67.5	60.0	148.5	+/+
VESA, 2048 x 1080	66.58	60.0	147.16	+/-
CVR, 2560 x 1440	88.8	60.0	241.5	+/-



# DP MST Multi-Stream Transport (MST) Modes

## U2419HC

MST Source Monitor	Maximum number of external monitors that can be supported
	1920 x 1080/60 Hz
1920 x 1080/60 Hz	3

**NOTE:** Maximum external monitor resolution supported is 1920 x 1080 60Hz only.

## U2719DC

MST Source Monitor	Maximum number of external monitors that can be supported
	2560 x 1440/60 Hz
2560 x 1440/60 Hz	1

**NOTE:** Maximum external monitor resolution supported is 2560 x 1440 60Hz only.

# USB-C MST Multi-Stream Transport (MST) Modes

## U2419HC

OSD Display Info: Link rate(current)	Maximum number of external monitors that can be supported
	1920 x 1080/60 Hz
HBR3	2
HBR2	1

## U2719DC



OSD Display Info: Link rate(current)	Maximum number of external monitors that can be supported
	2560 x 1440/60 Hz
HBR3	1
HBR2	0



## Electrical Specifications

<b>Model</b>	<b>U2419HC/U2719DC</b>
Video input signals	<ul style="list-style-type: none"> <li>• Digital video signal for each differential line Per differential line at 100 ohm impedance</li> <li>• DP/USB Type-C signal input support</li> </ul>
Input voltage/ frequency/current	100-240 VAC / 50 or 60 Hz $\pm$ 3 Hz / 1.8 A (maximum)
Inrush current	120 V: 30 A (Max.) 240 V: 60 A (Max.)

## Physical Characteristics

<b>Model</b>	<b>U2419HC</b>	<b>U2719DC</b>
Connector type	<ul style="list-style-type: none"> <li>• DP connector (include DP in and DP out)</li> <li>• HDMI connector</li> <li>• USB Type-C connector</li> <li>• Audio line-out</li> <li>• USB 3.0 downstream port connector x 4</li> </ul> (Port with  battery icon supports BC 1.2.)	<ul style="list-style-type: none"> <li>• DP connector (include DP in and DP out)</li> <li>• HDMI connector</li> <li>• USB Type-C connector</li> <li>• Audio line-out</li> <li>• USB 3.0 downstream port connector x 4</li> </ul> (Port with  battery icon supports BC 1.2.)
Signal cable type	DP to DP 1.8 M cable USB Type-C 1.0 M cable	DP to DP 1.8 M cable USB Type-C 1.0 M cable
Dimensions (with stand)		
Height (extended)	478.4 mm (18.84 inches)	520.2 mm (20.48 inches)
Height (compressed)	348.4mm (13.72 inches)	390.2 mm (15.36 inches)
Width	538.5 mm (21.20 inches)	612.2 mm (24.10 inches)
Depth	165.0 mm (6.50 inches)	180.0 mm (7.09 inches)
Dimensions (without stand)		
Height	313.7 mm (12.35 inches)	355.0 mm (13.98 inches)
Width	538.5 mm (21.20 inches)	612.2 mm (24.10 inches)
Depth	39.0 mm (1.54 inches)	39.0 mm (1.54 inches)
Stand dimensions		
Height (extended)	393.5 mm (15.49 inches)	413.6 mm (16.28 inches)
Height (compressed)	347.0 mm (13.66 inches)	367.1 mm (14.45 inches)
Width	218.0 mm (8.58 inches)	230.0 mm (9.06 inches)



Depth	165.0mm (6.50 inches)	180.0 mm (7.09 inches)
Weight		
Weight with packaging	7.55 kg (16.64 lb)	8.72kg (19.22 lb)
Weight with stand assembly and cables	5.32kg (11.73 lb)	6.24 kg (13.75 lb)
Weight without stand assembly (For wall mount or VESA mount considerations - no cables)	3.37 kg (7.43 lb)	4.19 kg (9.23 lb)
Weight of stand assembly	1.59 kg (3.50 lb)	1.72 kg (3.79 lb)

## Environmental Characteristics

<b>Model</b>	<b>U2419HC/U2719DC</b>	
<b>Compliant Standards</b>		
<ul style="list-style-type: none"> <li>• ENERGY STAR certified Monitor</li> <li>• EPEAT Gold registered in the U.S. EPEAT registration varies by country. See <a href="http://www.epeat.net">www.epeat.net</a> for registration status by country.</li> <li>• TCO Certified Display</li> <li>• RoHS Compliant</li> <li>• BFR/PVC Free monitor (excluding external cables)</li> <li>• Meets NFPA 99 leakage current requirements</li> <li>• Arsenic-Free glass and Mercury-Free for the panel only</li> </ul>		
<b>Temperature</b>		
Operating	0°C to 40°C (32°F to 104°F)	
Non-operating	-20°C to 60°C (-4°F to 140°F)	
<b>Humidity</b>		
Operating	10% to 80% (non-condensing)	
Non-operating	5% to 90% (non-condensing)	
<b>Altitude</b>		
Operating	5,000 m (16,404 ft) (maximum)	
Non-operating	12,192 m (40,000 ft) (maximum)	
<b>Thermal dissipation</b>		
U2419HC	478.02 BTU/hour (maximum) 59.75 BTU/hour (typical)	
U2719DC	546.30 BTU/hour (maximum) 113.36 BTU/hour (typical)	



# Power Management Modes

If you have VESA's DPM-compliant video card or software installed in your PC, the monitor can automatically reduce its power consumption when not in use. This is referred to as power save mode\*. If the computer detects input from the keyboard, mouse, or other input devices, the monitor automatically resumes functioning. The following table shows the power consumption and signaling of this automatic power saving feature.

## U2419HC

VESA Modes	Horizontal Sync	Vertical Sync	Video	Power Indicator	Power Consumption
Normal operation	Active	Active	Active	White	140 W (maximum)** 17.5 W (typical)
Active-off mode	Inactive	Inactive	Off	White (Glowing)	Less than 0.3 W
Switch off	-	-	-	Off	Less than 0.3 W

Energy Star	Power Consumption
P <sub>ON</sub>	14.35 W***
E <sub>TEC</sub>	49.12 kWh****

## U2719DC

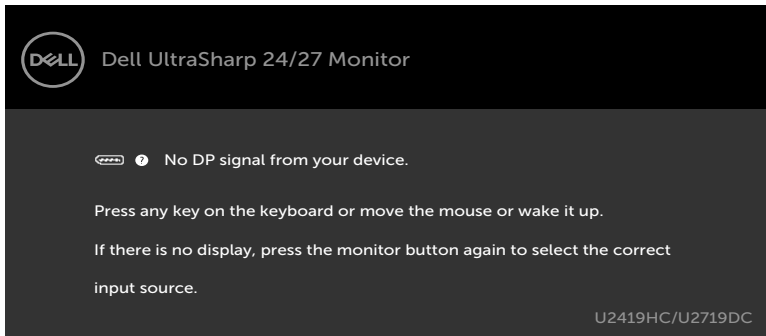
VESA Modes	Horizontal Sync	Vertical Sync	Video	Power Indicator	Power Consumption
Normal operation	Active	Active	Active	White	160 W (maximum)** 33.2 W (typical)
Active-off mode	Inactive	Inactive	Off	White (Glowing)	Less than 0.3 W
Switch off	-	-	-	Off	Less than 0.3 W

Energy Star	Power Consumption
P <sub>ON</sub>	20.94 W***
E <sub>TEC</sub>	67.22 kWh****





The OSD operates only in the normal operation mode. If you press any button in the active-off mode, one of the following message is displayed:



\*Zero power consumption in OFF mode can only be achieved by disconnecting the AC mains cable from the monitor.

\*\*Maximum power consumption with maximum luminance.

\*\*\*Power consumption of on mode as defined in Energy Star 7.0 version.

\*\*\*\*Total energy consumption in kWh as defined in Energy Star 7.0 version.

This document is informational only and reflects laboratory performance. Your product may perform differently, depending on the software, components and peripherals you ordered and shall have no obligation to update such information. Accordingly, the customer should not rely upon this information in making decisions about electrical tolerances or otherwise. No warranty as to accuracy or completeness is expressed or implied.

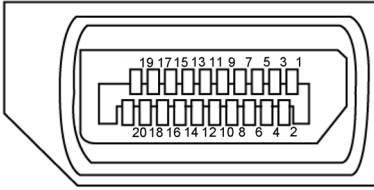
Activate the computer and the monitor to gain access to the OSD.

 **NOTE:** This monitor is **ENERGY STAR** -compliant.



# Pin Assignments

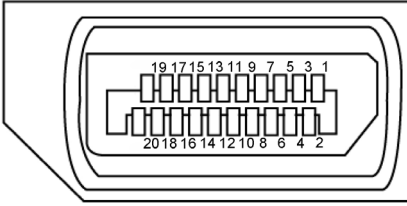
## DP port (in)



Pin number	20-pin side of the connected signal cable
1	ML3(n)
2	GND
3	ML3(p)
4	ML2(n)
5	GND
6	ML2(p)
7	ML1(n)
8	GND
9	ML1(p)
10	ML0(n)
11	GND
12	ML0(p)
13	CONFIG1
14	CONFIG2
15	AUX CH (p)
16	GND
17	AUX CH (n)
18	Hot Plug Detect
19	Return
20	DP_PWR



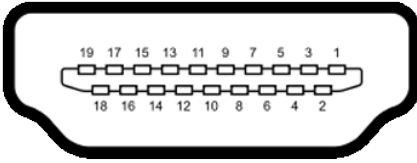
## DP port (out)



Pin number	20-pin side of the connected signal cable
1	ML0(p)
2	GND
3	ML0(n)
4	ML1(p)
5	GND
6	ML1(n)
7	ML2(p)
8	GND
9	ML2(n)
10	ML3(p)
11	GND
12	ML3(n)
13	CONFIG1
14	CONFIG2
15	AUX CH(p)
16	GND
17	AUX CH(n)
18	Hot Plug Detect
19	Return
20	DP_PWR



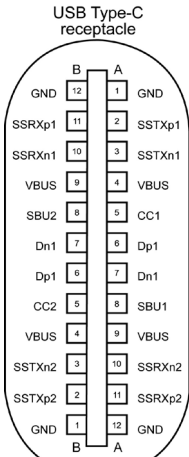
## HDMI port



Pin number	19-pin side of the connected signal cable
1	TMDS DATA 2+
2	TMDS DATA 2 SHIELD
3	TMDS DATA 2-
4	TMDS DATA 1+
5	TMDS DATA 1 SHIELD
6	TMDS DATA 1-
7	TMDS DATA 0+
8	TMDS DATA 0 SHIELD
9	TMDS DATA 0-
10	TMDS CLOCK+
11	TMDS CLOCK SHIELD
12	TMDS CLOCK-
13	CEC
14	Reserved (N.C. on device)
15	DDC CLOCK (SCL)
16	DDC DATA (SDA)
17	DDC/CEC Ground
18	+5 V POWER
19	HOT PLUG DETECT



# USB Type-C port





typically connected to a charger through a Type-C cable

Pin	Signal	Pin	Signal
<b>A1</b>	GND	<b>B12</b>	GND
<b>A2</b>	SSTXp1	<b>B11</b>	SSRXp1
<b>A3</b>	SSTXn1	<b>B10</b>	SSRXn1
<b>A4</b>	VBUS	<b>B9</b>	VBUS
<b>A5</b>	CC1	<b>B8</b>	SBU2
<b>A6</b>	Dp1	<b>B7</b>	Dn1
<b>A7</b>	Dn1	<b>B6</b>	Dp1
<b>A8</b>	SBU1	<b>B5</b>	CC2
<b>A9</b>	VBUS	<b>B4</b>	VBUS
<b>A10</b>	SSRXn2	<b>B3</b>	SSTXn2
<b>A11</b>	SSRXp2	<b>B2</b>	SSTXp2
<b>A12</b>	GND	<b>B1</b>	GND




## Universal Serial Bus (USB)


This section gives you information about the USB ports available on your monitor.

 **NOTE:** Up to 2 A on USB downstream port (port with  battery icon) with BC 1.2 compliance devices; up to 0.9 A on the other 2 USB downstream ports.

Your computer has the following USB ports:

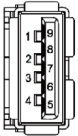
- 4 downstream - 2 at left side, 2 at bottom

Power Charging Port - the ports with  battery icon supports fast current charging capability if the device is BC 1.2 compatible.

 **NOTE:** The monitor's USB ports work only when the monitor is on or in the power save mode. In power save mode, if the USB cable (Type-C to Type-C) is plugged in, the USB ports can work normally. Otherwise, follow the OSD setting of USB, if the setting is "On During Standby" then USB work normally, otherwise USB is disabled. If you turn off the monitor and then turn it on, the attached peripherals may take a few seconds to resume normal functionality.

Transfer speed	Data rate	Maximum power consumption (each port)
SuperSpeed	5 Gbps	4.5 W
Hi-Speed	480 Mbps	2.5 W
Full speed	12 Mbps	2.5 W

### USB downstream port



Pin number	Signal
1	VBUS
2	D-
3	D+
4	GND
5	StdA_SSRX-
6	StdA_SSRX+
7	GND_DRAIN
8	StdA_SSTX-
9	StdA_SSTX+
Shell	Shield



## Plug-and-Play

You can install the monitor in any Plug-and-Play-compatible system. The monitor automatically provides the computer system with its extended display identification data (EDID) using display data channel (DDC) protocols so the computer can configure itself and optimize the monitor settings. Most monitor installations are automatic; you can select different settings if desired. For more information about changing the monitor settings, see [Operating the Monitor](#).

## LCD Monitor Quality and Pixel Policy




During the LCD monitor manufacturing process, it is not uncommon for one or more pixels to become fixed in an unchanging state which are hard to see and do not affect the display quality or usability. For more information on LCD Monitor Pixel Policy, see Dell support site at: [www.dell.com/support/monitors](http://www.dell.com/support/monitors).

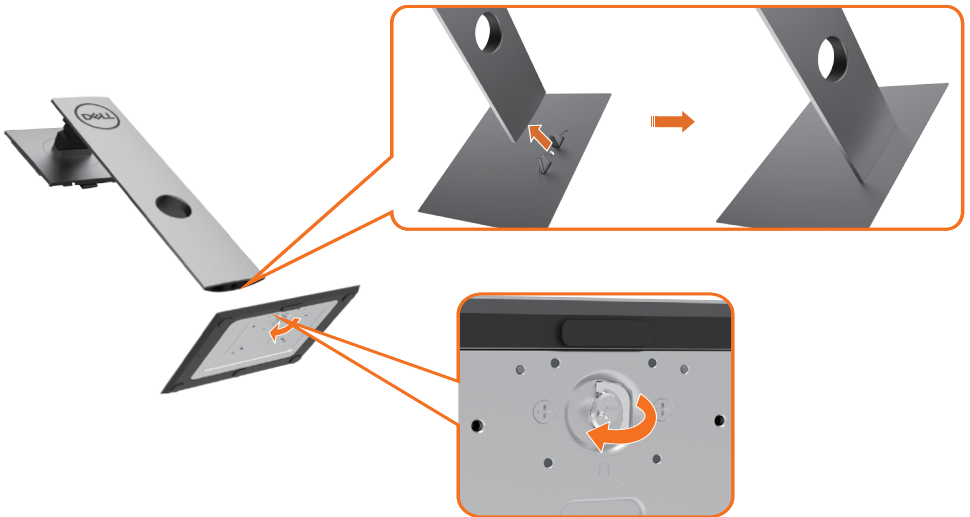


# Setting Up the Monitor

---

## Attaching the Stand

-  **NOTE:** The stand riser and stand base are detached when the monitor is shipped from the factory.
-  **NOTE:** The procedure below is applicable for the default stand. If you purchased any other stand, see the documentation shipped with the stand to set it up.
-  **CAUTION:** Place monitor on a flat, clean, and soft surface to avoid scratching the display panel.

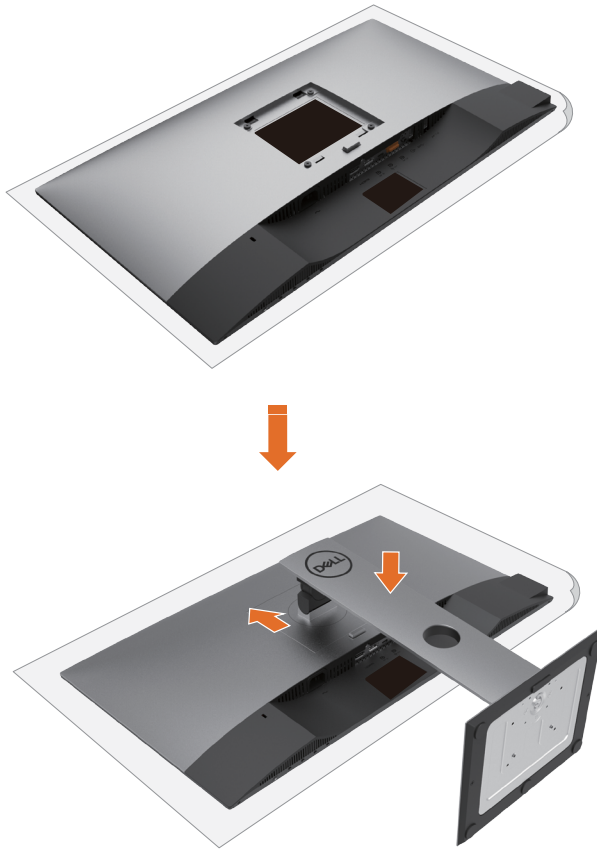


To attach the monitor stand:

- 1 Align the stand base protruded blocks to the matching slot on the stand.
- 2 Insert the stand base blocks fully into the stand slot.
- 3 Lift the screw handle and turn the screw clockwise.
- 4 After fully tightening the screw, fold the screw handle flat within the recess.







- 1** Remove the monitor protective cover and place the monitor with its front facing downward on it.
- 2** Insert the two tabs on the upper part of the stand to the groove on the back of the monitor.
- 3** Press the stand down till it snaps into its place.

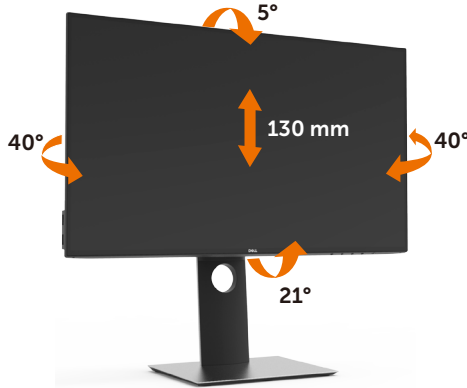


# Using the Tilt, Swivel, and Vertical Extension

**NOTE:** This is applicable for a monitor with a stand. If you purchased any other stand, refer to the respective stand setup guide for set up instructions.

## Tilt, Swivel and Vertical Extension

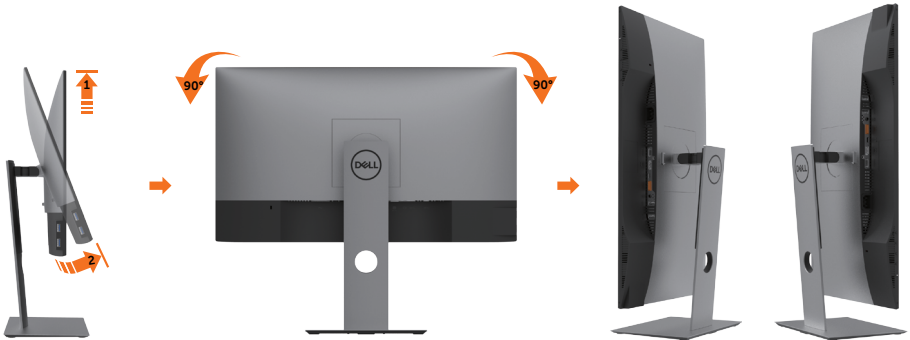
With the stand attached to the monitor, you can tilt the monitor for the most comfortable viewing angle.



**NOTE:** The stand is detached when the monitor is shipped from the factory.

## Rotating the Monitor

Before you rotate the monitor, your monitor should be fully vertically extended and fully tilted up to avoid hitting the bottom edge of the monitor.




**NOTE:** To use the Display Rotation function (Landscape versus Portrait view) with your Dell computer, you require an updated graphics driver that is not included with this monitor. To download the graphics driver, go to [www.dell.com/support](http://www.dell.com/support) and see the Download section for Video Drivers for latest driver updates.

**NOTE:** When in the Portrait View Mode, you may experience performance degradation in graphic-intensive applications (3D Gaming and etc.).




# Adjusting the Rotation Display Settings of Your System

After you have rotated your monitor, you need to complete the procedure below to adjust the Rotation Display Settings of your System.

 **NOTE:** If you are using the monitor with a non-Dell computer, you need to go the graphics driver website or your computer manufacturer website for information on rotating the 'contents' on your display.

## To adjust the Rotation Display Settings:

- 1 Right-click on the desktop and click Properties.
- 2 Select the Settings tab and click Advanced.
- 3 If you have an AMD graphics card, select the Rotation tab and set the preferred rotation.
- 4 If you have an nVidia graphics card, click the nVidia tab, in the left-hand column select NVRotate, and then select the preferred rotation.
- 5 If you have an Intel® graphics card, select the Intel graphics tab, click Graphic Properties, select the Rotation tab, and then set the preferred rotation.

 **NOTE:** If you do not see the rotation option or it is not working correctly, go to [www.dell.com/support](http://www.dell.com/support) and download the latest driver for your graphics card.



# Connecting Your Monitor

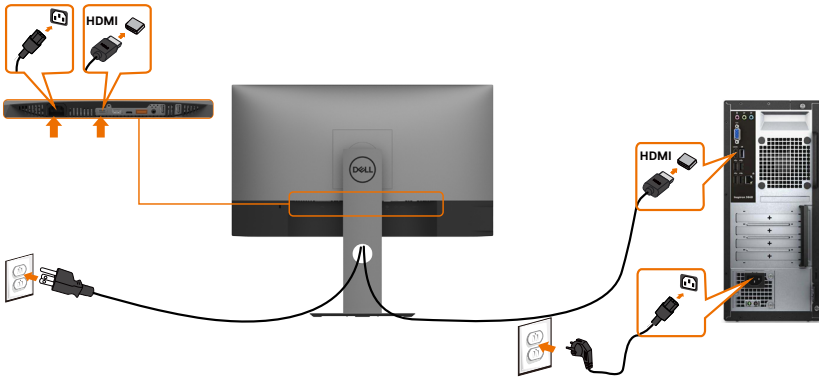
**⚠ WARNING:** Before you begin any of the procedures in this section, follow the [Safety Instructions](#).

To connect your monitor to the computer:

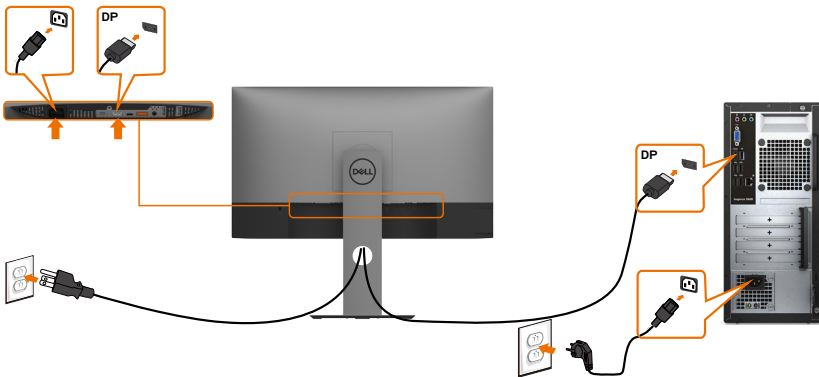
- 1 Turn off your computer.
- 2 Connect the DP/USB type-C cable from your monitor to the computer.
- 3 Switch on your monitor.
- 4 Select the correct input source at monitor OSD Menu and turn on your computer.

**🔩 NOTE:** U2419HC/U2719DC default setting is DP 1.4. A DP 1.1 Graphic card may not display normally. Please refer to [“product specific problems – No image when using DP connection to the PC”](#) to change default setting.

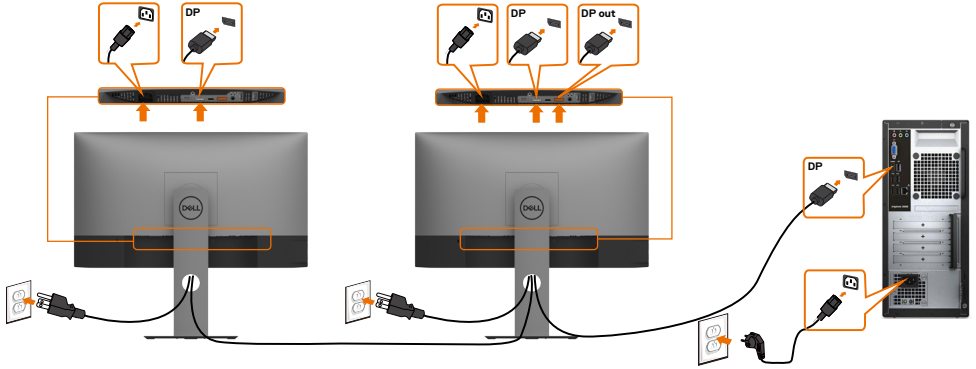
## Connecting the HDMI cable (Optional)



## Connecting the DP cable



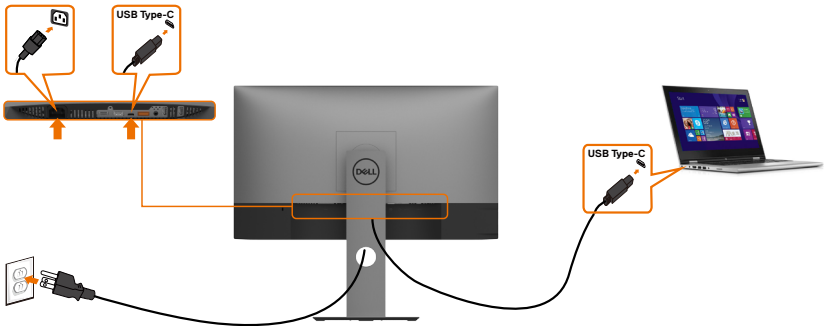
# Connecting the monitor for DP Multi-Stream Transport (MST) function



**NOTE:** Supports the DP MST feature. To make use of this feature, your PC Graphics Card must be certified to DP1.2 with MST option.

**NOTE:** Remove the rubber plug when using DP out connector.

## Connecting the USB Type-C cable



The USB Type-C port on your monitor:

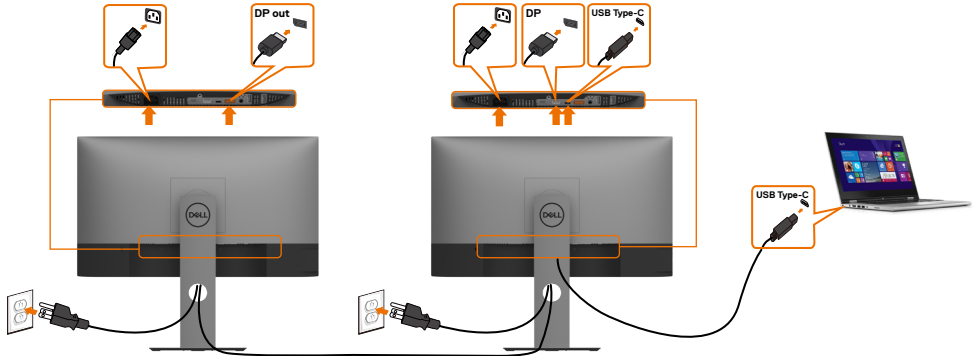
- Can be used as USB Type-C or DisplayPort 1.4, alternatively.
- Supports USB Power Delivery (PD), with profiles up to 65 W.

**NOTE:** Regardless of the power requirement/actual power consumption of your laptop, or the remaining power runtime in your battery, the Dell U2419HC/U2719DC monitor is designed to supply power delivery of up to 65 W to your laptop.

Rated power (on laptops that have USB Type-C with PowerDelivery)	Maximum charging power
45 W	45 W
65 W	65 W
90 W	Not supported
130 W	Not supported



## Connecting the monitor for USB-C Multi-Stream Transport (MST) function



- NOTE:** The maximum number of supported U2719DC via MST is subjected to the bandwidth of the USB-C source. Please refer to “[product specific problems –No image when using USB-C MST](#)”.
- NOTE:** Remove the rubber plug when using DP out connector.

## Organizing Your Cables



After attaching all necessary cables to your monitor and computer, (see [Connect-  
ing Your Monitor](#) for cable attachment) organize all cables as shown above.



# Removing the Monitor Stand



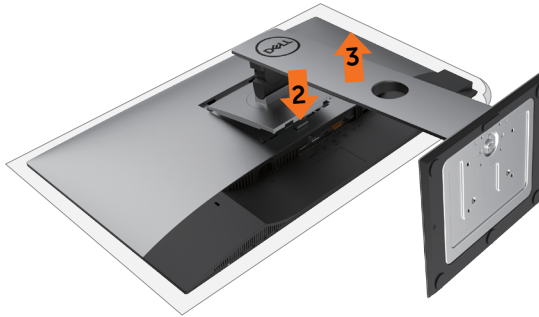
**CAUTION:** To prevent scratches on the LCD screen while removing the stand, make sure that the monitor is placed on a soft, clean surface.



**NOTE:** The procedure below is applicable for the default stand. If you purchased any other stand, see the documentation shipped with the stand to set it up.

To remove the stand:

- 1 Place the monitor on a soft cloth or cushion.
- 2 Press and hold the stand-release button.
- 3 Lift the stand up and away from the monitor.



# Wall Mounting (Optional)



**NOTE:** Use M4 x 10 mm screws to connect the monitor to the wall-mounting kit.

Refer to the instructions that come with the VESA-compatible wall mounting kit.

- 1 Place the monitor on a soft cloth or cushion on a stable, flat table.
- 2 Remove the stand.
- 3 Use a Phillips crosshead screwdriver to remove the four screws securing the plastic cover.
- 4 Attach the mounting bracket from the wall mounting kit to the monitor.
- 5 Mount the monitor on the wall by following the instructions that comes with the wall mounting kit.




**NOTE:** For use only with UL or CSA or GS-listed wall mount bracket with minimum weight/load bearing capacity of 3.37 kg (U2419HC)/4.19 kg (U2719DC).



# Operating the Monitor

---

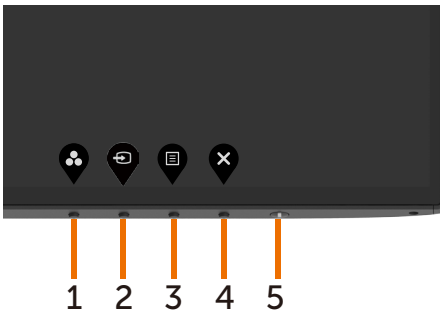
## Turning on the Monitor

Press the  button to turn on the monitor.








## Using the Front Panel Controls

Use the control buttons at the bottom edge of the monitor to adjust the characteristics of the image being displayed. As you use these buttons to adjust the controls, an OSD shows the numeric values of the characteristics as they change.





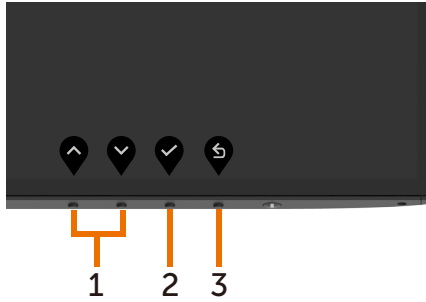
The following table describes the front panel buttons:





Front-Panel Button	Description
1  <b>Shortcut key: Preset Modes</b>	Use this button to choose from a list of preset color modes.
2  <b>Shortcut key: Input Source</b>	Use this button to choose from a list of Input Source.
3  <b>Menu</b>	Use this menu button to launch the on-screen display (OSD) and select the OSD menu. See <a href="#">Accessing the Menu System</a> .
4  <b>Exit</b>	Use this button to go back to the main menu or exit the OSD main menu.
5  <b>Power (with power light indicator)</b>	Use the <b>Power</b> button to turn the monitor On and Off. The white LED indicates the monitor is On and fully functional. A glowing white LED indicates DPMS Power Save Mode.



# Front-Panel Button

Use the buttons on the front of the monitor to adjust the image settings.





Front Panel Button	Description
1   Up Down	Use the <b>Up</b> (increase) and <b>Down</b> (decrease) keys to adjust items in the OSD menu.
2  OK	Use the <b>OK</b> button to confirm your selection.
3  Back	Use the <b>Back</b> button to go back to the previous menu.

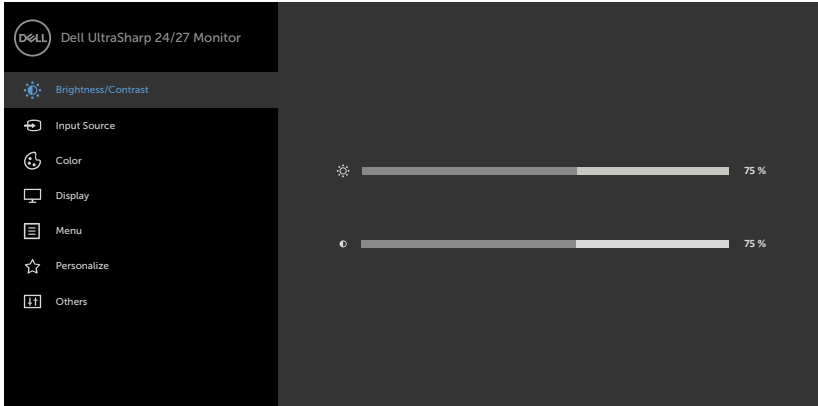














# Using the On-Screen Display (OSD) Menu

## Accessing the Menu System

 **NOTE:** Any changes you make using the OSD menu are automatically saved if you move to another OSD menu, exit the OSD menu, or wait for the OSD menu to disappear.

- 1 Press the  button to launch the OSD menu and display the main menu.



- 2 Press the  and  buttons to move between options. As you move from one icon to another, the option name is highlighted.
- 3 Press the  or  or  button once to activate the highlighted option.
- 4 Press the  and  buttons to select the desired parameter.
- 5 Press  to enter the slide bar and then use the  or  button, according to the indicators on the menu, to make your changes.
- 6 Select the  to return to previous menu or  to accept and return to previous menu.

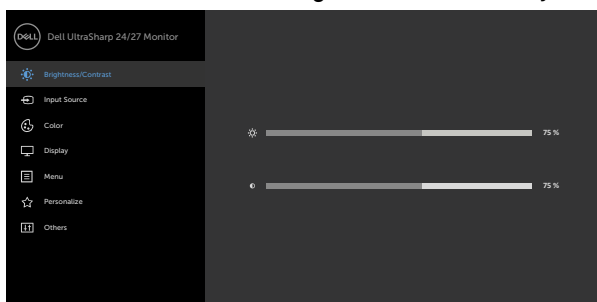


Icon	Menu and Submenus	Description
------	-------------------	-------------




**Brightness/Contrast**


Use this menu to activate **Brightness/Contrast** adjustment.



**Brightness**



**Brightness** adjusts the luminance of the backlight (minimum 0; maximum 100).

Press the  button to increase brightness.

Press the  button to decrease brightness.

**Contrast**

Adjust the **Brightness** first, and then adjust **Contrast** only if further adjustment is necessary.

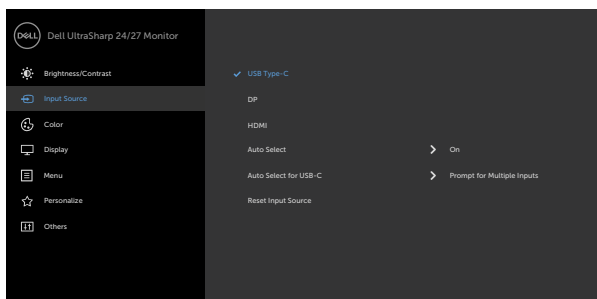
Press the  button to increase contrast and press the  button to decrease contrast (between 0 and 100).





Contrast adjusts the difference between darkness and lightness on the monitor.



**Input Source**

Use the **Input Source** menu to select between different video inputs that are connected to your monitor.

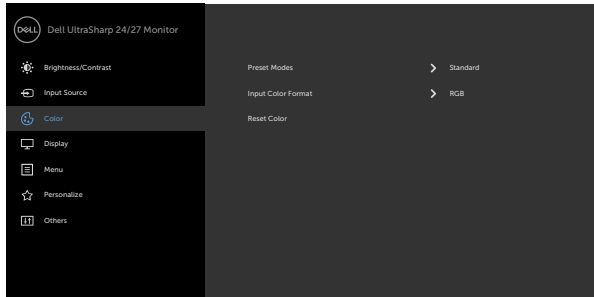


Icon	Menu and Submenus	Description
	<b>USB Type-C</b>	Select <b>USB Type-C</b> input when you are using the USB Type-C connector. Use  to select the USB Type-C input source.
	<b>DP</b>	Select <b>DP</b> input when you are using the DP (DisplayPort) connector. Use  to select the DP input source.
	<b>HDMI</b>	Select <b>HDMI</b> input when you are using the HDMI connector. Use  to select the HDMI input source.
	<b>Auto Select</b>	Use  to select <b>Auto Select</b> , the monitor scans for available input sources.
	<b>Auto Select for USB-C</b>	Allows you to set Auto Select for USB-C to: <ul style="list-style-type: none"> <li>• <b>Prompt for Multiple Inputs</b> : always show Switch to USB-C Video Input message for user to choose whether to switch or not.</li> <li>• <b>Yes:</b> The monitor always switch to USB-C video without asking while USB-C connected.</li> <li>• <b>No:</b> The monitor will NOT auto switch to USB-C video from another available input.</li> </ul>
	<b>Reset Input Source</b>	Resets your monitor's Input Source settings to the factory defaults.



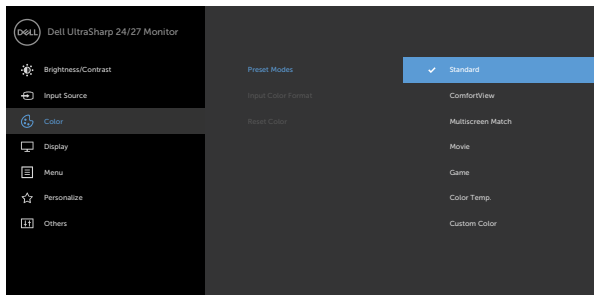
### Color



Use the **Color** menu to adjust the color setting mode.








Icon	Menu and Submenus	Description
------	-------------------	-------------

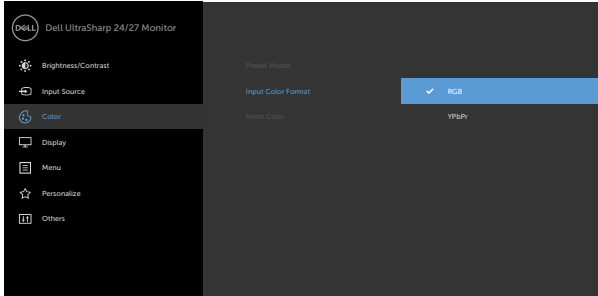
**Preset Modes** When you select **Preset Modes**, you can choose **Standard**, **ComfortView**, **Multiscreen Match**, **Movie**, **Game**, **Color Temp.** or **Custom Color** from the list.


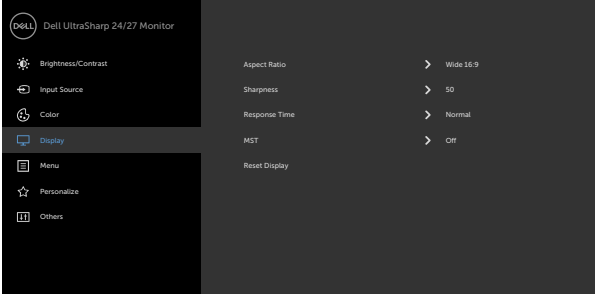





- **Standard:** Default color settings. This is the default preset mode.
- **ComfortView:** Decreases the level of blue light emitted from the screen to make viewing more comfortable for your eyes.  
**NOTE:** To reduce the risk of eye strain and neck/arm/back/shoulders pain from using the monitor for long periods of time, we suggest you to :
  - Set the screen about 20 to 28 inches (50-70 cm) from your eyes.
  - Blink frequently to moisten or rewet your eyes when working with the monitor.
  - Take regular and frequent breaks for 20 minutes every two hours.
  - Look away from your monitor and gaze at a distant object at 20 feet away for at least 20 seconds during the breaks.
  - Perform stretches to relieve tension in the neck/arm/back/shoulders during the breaks.
- **Multiscreen Match:** Option to allow matching of the white backgrounds on multiple monitors.
- **Movie:** Ideal for movies.
- **Game:** Ideal for most gaming applications.
- **Color Temp.:** The screen appears warmer with a red/yellow tint with slider set at 5,000K or cooler with blue tint with slider set at 10,000K.
- **Custom Color:** Allows you to manually adjust the color settings. Press the  and  buttons to adjust the Red, Green, and Blue values and create your own preset color mode.




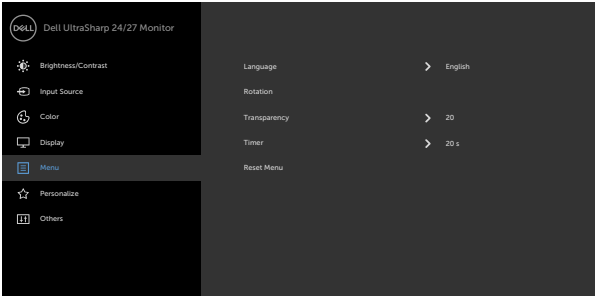





Icon	Menu and Submenus	Description
	<b>Input Color Format</b>	<p>Allows you to set the video input mode to:</p> <ul style="list-style-type: none"> <li>• <b>RGB:</b> Select this option if your monitor is connected to a computer (or DVD player) using the USB Type-C, DP cable.</li> <li>• <b>YPbPr:</b> Select this option if your DVD player supports only YPbPr output.</li> </ul>
		
<b>Hue</b>	<p>Use  or  to adjust the hue from 0 to 100.</p> <p><b>NOTE:</b> Hue adjustment is available only for Movie and Game mode.</p>	
<b>Saturation</b>	<p>Use  or  to adjust the saturation from 0 to 100.</p> <p><b>NOTE:</b> Saturation adjustment is available only for Movie and Game mode.</p>	
<b>Reset Color</b>	<p>Resets your monitor's color settings to the factory defaults.</p>	




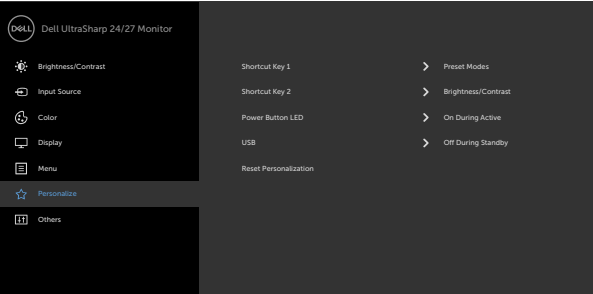

Icon	Menu and Submenus	Description
	<b>Display</b>	Use the <b>Display</b> menu to adjust image.
		
		
<b>Aspect Ratio</b>	Adjust the image ratio to <b>Wide 16:9, Auto Resize, 4:3, 1:1.</b>	
<b>Sharpness</b>	Makes the image look sharper or softer. Use  or  to adjust the sharpness from '0' to '100'.	
<b>Response Time</b>	Allows you to set the <b>Response Time</b> to <b>Normal</b> or <b>Fast</b> .	
<b>MST</b>	DP Multi Stream Transport, Set to ON enables MST(DP out), Set to OFF disables MST function.  <b>NOTE:</b> When DP/USB-C upstream cable and DP downstream cable is connected, monitor will set MST = ON automatically, this action will only be done once after Factory Reset or Display Reset.	
<b>Reset Display</b>	Restores the display settings to factory defaults.	





Icon	Menu and Submenus	Description
	<b>Menu</b>	Select this option to adjust the settings of the OSD, such as, the languages of the OSD, the amount of time the menu remains on screen, and so on. <div data-bbox="346 231 941 528" data-label="Image">  </div>
		
	<b>Language</b>	Set the OSD display to one of eight languages. (English, Spanish, French, German, Brazilian Portuguese, Russian, Simplified Chinese, or Japanese).
	<b>Rotation</b>	Rotates the OSD by 0/90/180/270 degrees. You can adjust the menu according to your display rotation.
	<b>Transparency</b>	Select this option to change the menu transparency by using  and  (min. 0 / max. 100).
	<b>Timer</b>	<p><b>OSD Hold Time:</b> Sets the length of time the OSD remains active after you press a button.</p> Use the  and  buttons to adjust the slider in 1-second increments, from 5 to 60 seconds.
	<b>Reset Menu</b>	Restore the menu settings to factory defaults.



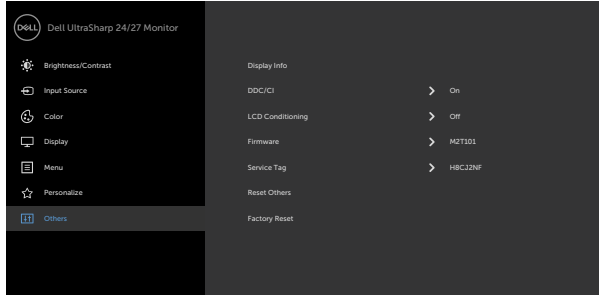
Icon	Menu and Submenus	Description
	<b>Personalize</b>	
		
<b>Shortcut key 1</b>	Select from <b>Preset Modes, Brightness/Contrast, Input Source, Aspect Ratio, Rotation</b> set as shortcut key 1.	
<b>Shortcut key 2</b>	Select from <b>Preset Modes, Brightness/Contrast, Input Source, Aspect Ratio, Rotation</b> set as shortcut key 2.	
<b>Power Button LED</b>	Allows you to set the state of the power light to save energy.	
<b>USB</b>	Enable or disable USB charger function during monitor standby mode. <b>NOTE:</b> USB ON/OFF under standby mode is only available when the USB Type-C cable is unplugged. This option is greyed out when the USB Type-C cable plugs in.	
<b>Reset Personalization</b>	Restores shortcut keys to factory defaults.	



Icon	Menu and Submenus	Description
------	-------------------	-------------



**Others**



Select this option to adjust the OSD settings, such as the **DDC/CI**, **LCD conditioning**, and so on.

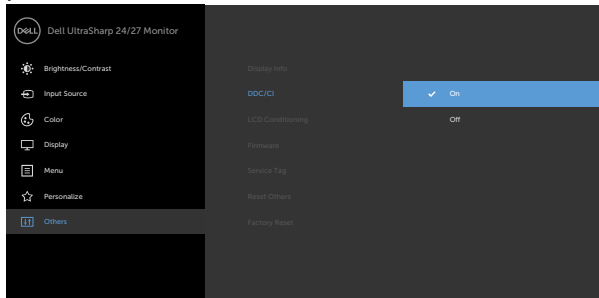
**Display Info**

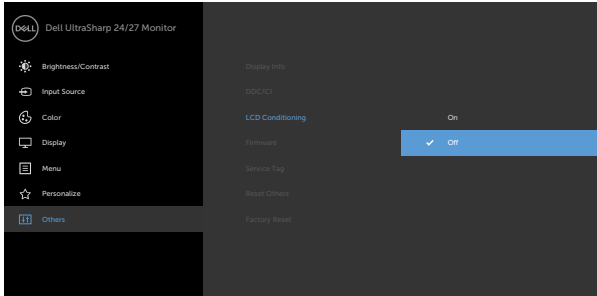
Displays the monitor's current settings.

**DDC/CI**


**DDC/CI** (Display Data Channel/Command Interface) allows you to adjust the monitor settings using software on your computer. Select **Off** to turn off this feature.

Enable this feature for best user experience and optimum performance of your monitor.



Icon	Menu and Submenus	Description
	<b>LCD Conditioning</b>	Helps reduce minor cases of image retention. Depending on the degree of image retention, the program may take some time to run. Select <b>On</b> to start the process.
		 <p>The screenshot shows the Dell OSD menu for a Dell UltraSharp 24/27 Monitor. The 'LCD Conditioning' option is highlighted in blue and set to 'On'. The menu includes options for Brightness/Contrast, Input Source, Color, Display, Menu, Personalize, and Others. The right side of the screen shows a list of settings: Display Info, OSD/CI, LCD Conditioning (On), Firmware (Off), Service Tag, Read Others, and Factory Reset.</p>
	<b>Firmware</b>	Firmware version.
	<b>Service Tag</b>	Displays the Service Tag. The Service Tag is a unique alphanumeric identifier that allows Dell to identify the product specifications and access warranty information. <b>NOTE:</b> The Service Tag is also printed on a label located at the back of the cover.
	<b>Reset Others</b>	Restores other settings, such as <b>DDC/CI</b> , to factory defaults.
	<b>Factory Reset</b>	Restores all OSD settings to the factory defaults.



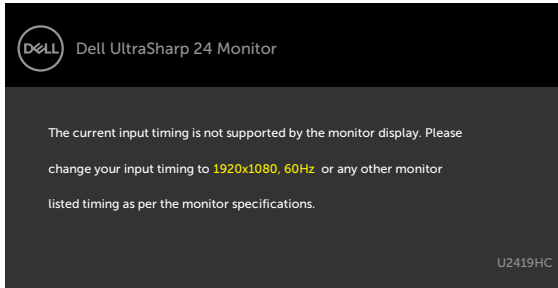
 **NOTE:** This monitor has a built-in feature to automatically calibrate the brightness to compensate for LED aging.



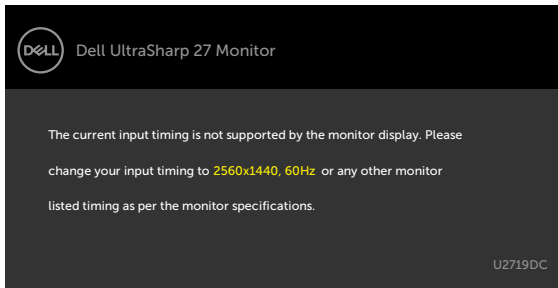
# OSD Warning Messages

When the monitor does not support a particular resolution mode, you can see the following message:

## U2419HC

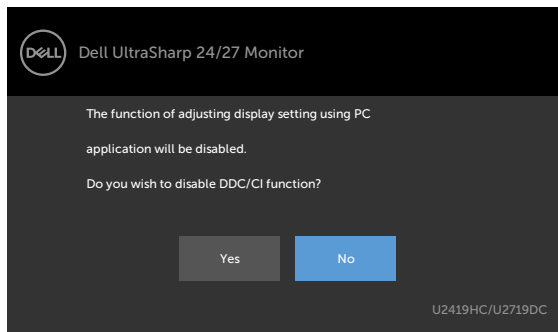


## U2719DC

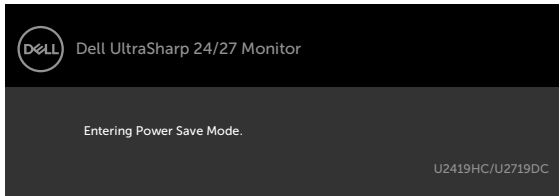


This means that the monitor cannot synchronize with the signal that it is receiving from the computer. See [Monitor Specifications](#) for the Horizontal and Vertical frequency ranges addressable by this monitor. Recommended mode is 1920 x 1080 (U2419HC) / 2560 x 1440 (U2719DC).

You can see the following message before the DDC/CI function is disabled:

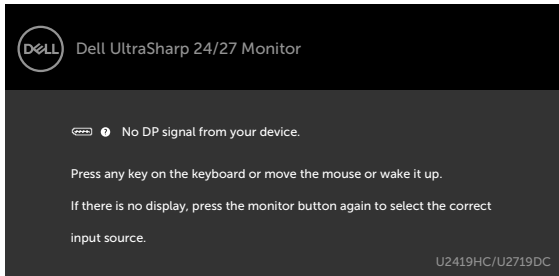


When the monitor enters the **Power Save** mode, the following message appears:

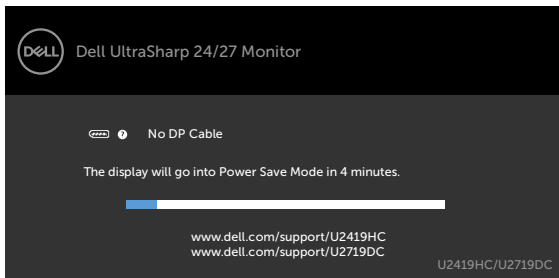


Activate the computer and wake up the monitor to gain access to the **OSD**.

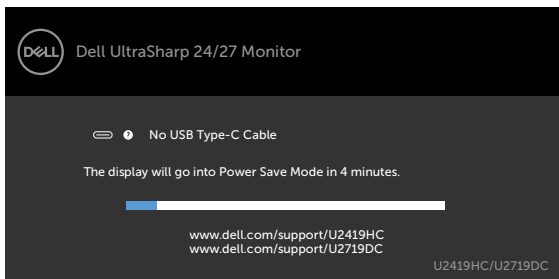
If you press any button other than the power button, the following messages will appear depending on the selected input:



If either DP, USB Type-C input is selected and the corresponding cable is not connected, a floating dialog box as shown below appears.

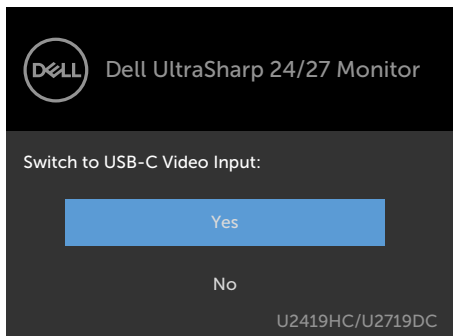


or



A message is displayed while the cable supporting DP alternate mode is connected to the monitor under the following conditions:

- When **Auto Select for USB-C** is set to **Prompt for Multiple Inputs**.
- When the DP cable is connected to the monitor.



See [Troubleshooting](#) for more information.



# Troubleshooting

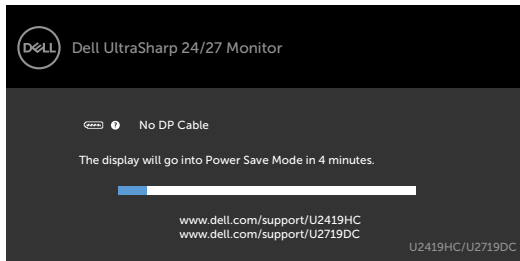
**⚠ WARNING:** Before you begin any of the procedures in this section, follow the [Safety Instructions](#).

## Self-Test

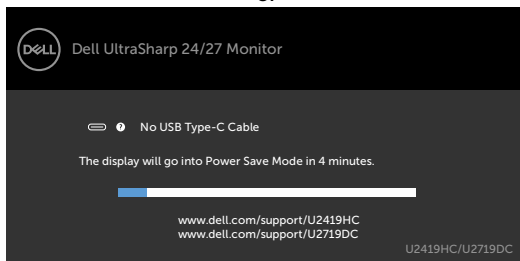
Your monitor provides a self-test feature that allows you to check whether your monitor is functioning properly. If your monitor and computer are properly connected but the monitor screen remains dark, run the monitor self-test by performing the following steps:

- 1 Turn off both your computer and the monitor.
- 2 Unplug the video cable from the back of the computer. To ensure proper Self-Test operation, remove all digital and the analog cables from the back of computer.
- 3 Turn on the monitor.

The floating dialog box should appear on-screen (against a black background), if the monitor cannot sense a video signal and is working correctly. While in self-test mode, the power LED remains white. Also, depending upon the selected input, one of the dialogs shown below will continuously scroll through the screen.



OR



- 4 This box also appears during normal system operation, if the video cable becomes disconnected or damaged.
- 5 Turn off your monitor and reconnect the video cable; then turn on both your computer and the monitor.


If your monitor screen remains blank after you use the previous procedure, check your video controller and computer, because your monitor is functioning properly.

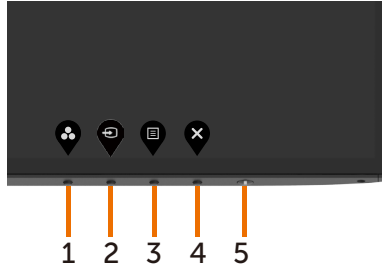




# Built-in Diagnostics

Your monitor has a built-in diagnostic tool that helps you determine if the screen abnormality you are experiencing is an inherent problem with your monitor, or with your computer and video card.

 **NOTE:** You can run the built-in diagnostics only when the video cable is unplugged and the monitor is in self-test mode.



To run the built-in diagnostics:

- 1 Make sure that the screen is clean (no dust particles on the surface of the screen).
- 2 Unplug the video cable(s) from the back of the computer or monitor. The monitor then goes into the self-test mode.
- 3 Press and hold **Button 1** for 5 seconds. A gray screen appears.
- 4 Carefully inspect the screen for abnormalities.
- 5 Press **Button 1** on the front panel again. The color of the screen changes to red.
- 6 Inspect the display for any abnormalities.
- 7 Repeat steps 5 and 6 to inspect the display in green, blue, black, white, and text screens.

The test is complete when the text screen appears. To exit, press **Button 1** again. If you do not detect any screen abnormalities upon using the built-in diagnostic tool, the monitor is functioning properly. Check the video card and computer.



# Common Problems

The following table contains general information about common monitor problems you might encounter and the possible solutions:

Common Symptoms	What You Experience	Possible Solutions
No Video/Power LED off	No picture	<ul style="list-style-type: none"> <li>• Ensure that the video cable connecting the monitor and the computer is properly connected and secure.</li> <li>• Verify that the power outlet is functioning properly using any other electrical equipment.</li> <li>• Ensure that the power button is depressed fully.</li> <li>• Ensure that the correct input source is selected in the <a href="#">Input Source</a> menu.</li> </ul>
No Video/Power LED on	No picture or no brightness	<ul style="list-style-type: none"> <li>• Increase brightness &amp; contrast controls via OSD.</li> <li>• Perform monitor self-test feature check.</li> <li>• Check for bent or broken pins in the video cable connector.</li> <li>• Run the built-in diagnostics.</li> <li>• Ensure that the correct input source is selected in the <a href="#">Input Source</a> menu.</li> </ul>
Missing Pixels	LCD screen has spots	<ul style="list-style-type: none"> <li>• Cycle power on-off.</li> <li>• Pixel that is permanently off is a natural defect that can occur in LCD technology.</li> <li>• For more information on Dell Monitor Quality and Pixel Policy, see Dell Support site at: <a href="http://www.dell.com/support/monitors">www.dell.com/support/monitors</a>.</li> </ul>
Stuck-on Pixels	LCD screen has bright spots	<ul style="list-style-type: none"> <li>• Cycle power On-Off.</li> <li>• Pixel that is permanently off is a natural defect that can occur in LCD technology.</li> <li>• For more information on Dell Monitor Quality and Pixel Policy, see Dell Support site at: <a href="http://www.dell.com/support/monitors">www.dell.com/support/monitors</a>.</li> </ul>
Brightness Problems	Picture too dim or too bright	<ul style="list-style-type: none"> <li>• Reset the monitor to factory settings.</li> <li>• Adjust brightness &amp; contrast controls via OSD.</li> </ul>
Safety Related Issues	Visible signs of smoke or sparks	<ul style="list-style-type: none"> <li>• Do not perform any troubleshooting steps.</li> <li>• Contact Dell immediately.</li> </ul>
Intermittent Problems	Monitor malfunctions on & off	<ul style="list-style-type: none"> <li>• Ensure that the video cable connecting the monitor to the computer is connected properly and is secure.</li> <li>• Reset the monitor to factory settings.</li> <li>• Perform monitor self-test feature check to determine if the intermittent problem occurs in self-test mode.</li> </ul>




Common Symptoms	What You Experience	Possible Solutions
Missing Color	Picture missing color	<ul style="list-style-type: none"> <li>• Perform monitor self-test.</li> <li>• Ensure that the video cable connecting the monitor to the computer is connected properly and is secure.</li> <li>• Check for bent or broken pins in the video cable connector.</li> </ul>
Wrong Color	Picture color not good	<ul style="list-style-type: none"> <li>• Change the settings of the <b>Preset Modes</b> in the <b>Color</b> menu OSD depending on the application.</li> <li>• Adjust R/G/B value under <b>Custom. Color</b> in <b>Color</b> menu OSD.</li> <li>• Change the <b>Input Color Format</b> to PC RGB or YPbPr in the <b>Color</b> menu OSD.</li> <li>• Run the built-in diagnostics.</li> </ul>
Image retention from a static image left on the monitor for a long period of time	Faint shadow from the static image displayed appears on the screen	<ul style="list-style-type: none"> <li>• Use the Power Management feature to turn off the monitor at all times when not in use (for more information, see <a href="#">Power Management Modes</a>).</li> <li>• Alternatively, use a dynamically changing screensaver.</li> </ul>

## Product Specific Problems

Problem	What you experience	Possible solutions
Screen image is too small	Image is centered on screen, but does not fill entire viewing area	<ul style="list-style-type: none"> <li>• Check the <b>Aspect Ratio</b> setting in the <b>Display</b> menu OSD.</li> <li>• Reset the monitor to factory settings.</li> </ul>
Cannot adjust the monitor with the buttons on the front panel	OSD does not appear on the screen	<ul style="list-style-type: none"> <li>• Turn off the monitor, unplug the monitor power cable, plug it back, and then turn on the monitor.</li> </ul>
No Input Signal when user controls are pressed	No picture, the LED light is white	<ul style="list-style-type: none"> <li>• Check the signal source. Ensure the computer is not in the power saving mode by moving the mouse or pressing any key on the keyboard.</li> <li>• Check whether the signal cable is plugged in properly. Connect the signal cable again, if necessary.</li> <li>• Reset the computer or video player.</li> </ul>



<b>Problem</b>	<b>What you experience</b>	<b>Possible solutions</b>
The picture does not fill the entire screen	The picture cannot fill the height or width of the screen	<ul style="list-style-type: none"> <li>• Due to different video formats (aspect ratio) of DVDs, the monitor may display in full screen.</li> <li>• Run the built-in diagnostics.</li> </ul>
No image when using USB Type-C connection to computer, laptop, and so on	Black screen	<ul style="list-style-type: none"> <li>• Verify if the USB Type-C interface of the device can support DP alternate mode.</li> <li>• Verify if the device required more than 65 W power charging.</li> <li>• USB Type-C interface of device cannot support DP alternate mode.</li> <li>• Set Windows to Projection mode.</li> <li>• Ensure that the USB Type-C cable is not damaged.</li> </ul>
No charging when using USB Type-C connection to computer, laptop, and so on	No charging	<ul style="list-style-type: none"> <li>• Verify if the device can support one of 5 V/9 V/15 V/20 V charging profiles.</li> <li>• Verify if the device requires more than 65 W power charging.</li> <li>• Ensure that you use only Dell approved adapter or the adapter that comes with the product.</li> <li>• Ensure that the USB Type-C cable is not damaged.</li> </ul>
Intermittent charging when using USB Type-C connection to computer, laptop, and so on	Intermittent charging	<ul style="list-style-type: none"> <li>• Check if the maximum power consumption of device is over 65 W.</li> <li>• Ensure that you use only Dell approved adapter or the adapter that comes with the product.</li> <li>• Ensure that the USB Type-C cable is not damaged.</li> </ul>
No image when using DP connection to the PC	Black screen	<ul style="list-style-type: none"> <li>• Verify which DP standard (DP 1.1a or DP 1.4) is your Graphics Card certified to. Download and install the latest graphics card driver.</li> <li>• Some DP 1.1a graphics card cannot support DP 1.4 monitors. Go to OSD menu, under Input Source selection, press and hold DP select  key for 8 sec to change the monitor setting from DP 1.4 to DP 1.1a.</li> </ul>
No image when using USB-C MST	Black screen or 2nd DUT is not Prime mode	<ul style="list-style-type: none"> <li>• USB-C input, Go to OSD menu, under Display Info check the Link Rate is HBR2 or HBR3, if Link Rate is HBR2, suggest to use USB-C to DP cable to turn on MST.</li> </ul>



# Appendix

---

## Safety Instructions

For displays with glossy bezels the user should consider the placement of the display as the bezel may cause disturbing reflections from surrounding light and bright surfaces.


 **WARNING: Use of controls, adjustments, or procedures other than those specified in this documentation may result in exposure to shock, electrical hazards, and/or mechanical hazards.**

For information on safety instructions, see the Safety, Environmental, and Regulatory Information (SERI).

## FCC Notices (U.S. only) and Other Regulatory Information

For FCC notices and other regulatory information, see the regulatory compliance website located at [www.dell.com/regulatory\\_compliance](http://www.dell.com/regulatory_compliance).

## Contacting Dell

 **NOTE:** If you do not have an active Internet connection, you can find contact information on your purchase invoice, packing slip, bill, or Dell product catalog.

Dell provides several online and telephone-based support and service options. Availability varies by country and product, and some services may not be available in your area.

**To get online Monitor support content:**

See [www.dell.com/support/monitors](http://www.dell.com/support/monitors).

**To contact Dell for sales, technical support, or customer service issues:**

- 1 Go to [www.dell.com/support](http://www.dell.com/support).
- 2 Verify your country or region in the Choose A Country/Region drop-down menu at the bottom-right corner of the page.
- 3 Click **Contact Us** next to the country dropdown.
- 4 Select the appropriate service or support link based on your need.
- 5 Choose the method of contacting Dell that is convenient for you.



# Setting Up Your Monitor

## Setting Display Resolution to 1920 x 1080 (U2419HC)/ 2560 x 1440 (U2719DC) (maximum)

For best performance, set the display resolution to **1920 x 1080 (U2419HC)/2560 x 1440 (U2719DC)** pixels by performing the following steps:

### In Windows Vista, Windows 7, Windows 8 or Windows 8.1:

- 1 For Windows 8 or Windows 8.1 only, select the Desktop tile to switch to classic desktop. For Windows Vista and Windows 7, skip this step.
- 2 Right-click on the desktop and click **Screen Resolution**.
- 3 Click the Dropdown list of the Screen Resolution and select **1920 x 1080 (U2419HC)/2560 x 1440 (U2719DC)**.
- 4 Click **OK**.


### In Windows 10:

- 1 Right-click on the desktop and click **Display Settings**.
- 2 Click **Advanced display settings**.
- 3 Click the dropdown list of **Resolution** and select **1920 x 1080 (U2419HC)/2560 x 1440 (U2719DC)**.
- 4 Click **Apply**.

If you do not see the recommended resolution as an option, you may need to update your graphics driver. Please choose the scenario below that best describes the computer system you are using, and follow the given steps.

### Dell computer

- 1 Go to [www.dell.com/support](http://www.dell.com/support), enter your service tag, and download the latest driver for your graphics card.
- 2 After installing the drivers for your graphics adapter, attempt to set the resolution to **1920 x 1080 (U2419HC)/2560 x 1440 (U2719DC)** again.

 **NOTE:** If you are unable to set the resolution to **1920 x 1080 (U2419HC)/2560 x 1440 (U2719DC)**, please contact Dell to inquire about a graphics adapter that supports these resolutions.




## Non-Dell computer

### In Windows Vista, Windows 7, Windows 8 or Windows 8.1:

- 1 For Windows 8 or Windows 8.1 only, select the Desktop tile to switch to classic desktop. For Windows Vista and Windows 7, skip this step.
- 2 Right-click on the desktop and click **Personalization**.
- 3 Click **Change Display Settings**.
- 4 Click **Advanced Settings**.
- 5 Identify your graphics controller supplier from the description at the top of the window (e.g. NVIDIA, AMD, Intel etc.).
- 6 Refer to the graphic card provider website for updated driver (for example, [www.amd.com](http://www.amd.com) or [www.nvidia.com](http://www.nvidia.com)).
- 7 After installing the drivers for your graphics adapter, attempt to set the resolution to **1920 x 1080 (U2419HC)/2560 x 1440 (U2719DC)** again.

### In Windows 10:

- 1 Right-click on the desktop and click **Display Settings**.
- 2 Click **Advanced display settings**.
- 3 Click **Display adapter properties**.
- 4 Identify your graphics controller supplier from the description at the top of the window (e.g. NVIDIA, AMD, Intel etc.).
- 5 Refer to the graphic card provider website for updated driver (for example, [www.amd.com](http://www.amd.com) or [www.nvidia.com](http://www.nvidia.com)).
- 6 After installing the drivers for your graphics adapter, attempt to set the resolution to **1920 x 1080 (U2419HC)/2560 x 1440 (U2719DC)** again.

 **NOTE:** If you are unable to set the recommended resolution, please contact the manufacturer of your computer or consider purchasing a graphics adapter that supports the video resolution.



# Maintenance Guidelines

## Cleaning Your Monitor



**WARNING:** Before cleaning the monitor, unplug the monitor power cable from the electrical outlet.



**CAUTION:** Read and follow the [Safety Instructions](#) before cleaning the monitor.

For best practices, follow these instructions in the list below while unpacking, cleaning, or handling your monitor:

- To clean your anti-static screen, lightly dampen a soft, clean cloth with water. If possible, use a special screen-cleaning tissue or solution suitable for the anti-static coating. Do not use benzene, thinner, ammonia, abrasive cleaners, or compressed air.
- Use a lightly-dampened, soft cloth to clean the monitor. Avoid using detergent of any kind as some detergents leave a milky film on the monitor.
- If you notice white powder when you unpack your monitor, wipe it off with a cloth.
- Handle your monitor with care as a darker-colored monitor may get scratched and show white scuff marks more than a lighter-colored monitor.
- To help maintain the best image quality on your monitor, use a dynamically changing screen saver and turn off your monitor when not in use.

