

**Dell C5518QT**  
**Dell Display Control**  
**User's Guide**



**Copyright © 2017 Dell Inc. or its subsidiaries. All rights reserved.** Dell, EMC, and other trademarks are trademarks of Dell Inc. or its subsidiaries. Other trademarks may be trademarks of their respective owners.

2017 – 09

Rev. A00

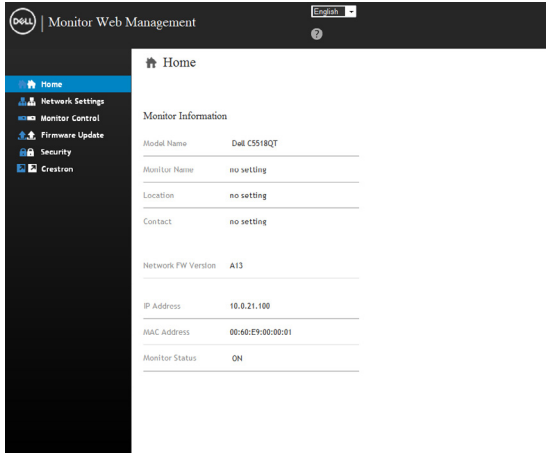
# Contents

|                                |   |
|--------------------------------|---|
| Dell Display Control . . . . . | 4 |
| Main window . . . . .          | 5 |
| Tools Window . . . . .         | 6 |
| Info window . . . . .          | 8 |
| Help Desk window . . . . .     | 9 |
| Emergency Alert . . . . .      | 9 |

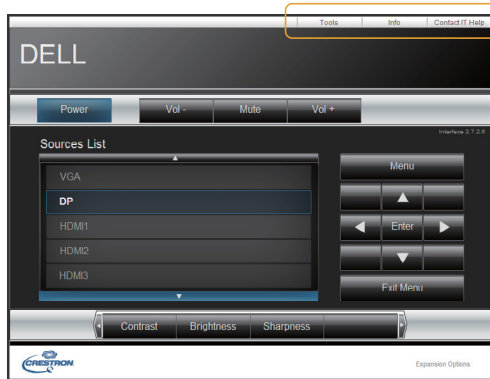


# Dell Display Control

Open a web browser and enter the display's IP address (e.g. <http://192.168.0.30>) in the address bar. The Home page opens and click Crestron for the control interface.



The Main window as shown below is displayed.

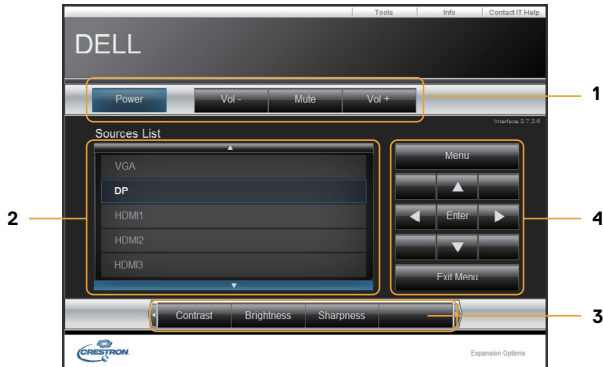


As shown above, you can open a window by clicking the corresponding tab at the top right of the window.

| Tab             | Description                              |
|-----------------|--|
| Tools           | Opens <a href="#">Tools window</a> .     |
| Info            | Opens <a href="#">Info window</a> .      |
| Contact IT Help | Opens <a href="#">Help Desk window</a> . |



## Main window



You can operate the basic controls of the monitor on this screen.

**1** Click a button and operate as follows.

| Button       | Description                 |
|--------------|-----------------------------|
| Power        | Turns the power on/off      |
| Vol -/ Vol + | Adjusts the volume settings |
| Mute         | Toggles Mute on/off         |

### 2 Sources List

You can click a button to switch the input channel. The cursor will move according to the currently selected input port.

| Button | Description                     |
|--------|---------------------------------|
| VGA    | Selects input from VGA port.    |
| DP     | Selects input from DP port.     |
| HDMI 1 | Selects input from HDMI 1 port. |
| HDMI 2 | Selects input from HDMI 2 port. |
| HDMI 3 | Selects input from HDMI 3 port. |

**3** Click a button and operate as follows. To show the hidden buttons, click the ◀/▶ icons if applicable at the left and right ends.

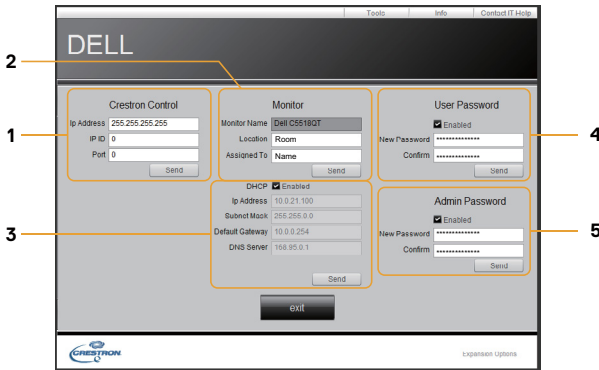
| Button     | Description                     |
|------------|---------------------------------|
| Contrast   | Adjusts the contrast setting.   |
| Brightness | Adjusts the brightness setting. |
| Sharpness  | Adjusts the sharpness setting.  |



4 Click the button and operate in the same way as the remote control.

| Button    | Description   |
|-----------|---|
| Menu      | Assigned the same operation as <b>MENU</b> button.      |
| Enter     | Assigned the same operation as <b>ENTER</b> button.     |
| Exit Menu | Assigned the same operation as <b>EXIT MENU</b> button. |
| ▲         | Assigned the same operation as ▲ button.                |
| ▼         | Assigned the same operation as ▼ button.                |
| ◀         | Assigned the same operation as ◀ button.                |
| ▶         | Assigned the same operation as ▶ button.                |

## Tools Window



Configures the settings between the monitor and Crestron® control system. Click the **[Exit]** button to return to the Main window.

### 1 Crestron Control

Configures the settings of Crestron® control system devices.

| Item       | Description   |
|------------|---|
| IP Address | Configures the IP address of the control system.                        |
| IP ID      | Configures the IP ID of the control system.                             |
| Port       | Specifies the port number used for communication by the control system. |

To apply the settings, click the **[Send]** button.



## 2 Monitor

Configures the monitor settings.

| Item         | Description  |
|--------------|--|
| Monitor Name | Configures the name of the monitor. The length of the Monitor Name can be up to 22 alphanumeric characters.    |
| Location     | Configures the location name of the monitor. You can specify a Location name up to 22 alphanumeric characters. |
| Assigned To  | Configures the user name for the monitor. You can specify a user name up to 22 alphanumeric characters.        |

The usable symbols are space and the following; !"#\$%&'()\*+,-./:;<=>?@[\\]^\_`{|}~  
To apply the settings, click the **[Send]** button.

## 3 Network Setting

Configures the network settings of the monitor.

| Item            | Description   |
|-----------------|---|
| DHCP            | Enables DHCP.   |
| IP Address      | Configures the IP address when DHCP is disabled.      |
| Subnet Mask     | Configures the subnet mask when DHCP is disabled.     |
| Default Gateway | Configures the default gateway when DHCP is disabled. |
| DNS Server      | Configures the DNS server address.                    |

To apply the settings, click the **[Send]** button.

## 4 User Password

Configures the User Password. To prompt the entry of User Password before starting Display control, select the checkbox.

| Item         | Description  |
|--------------|--|
| New Password | Configures the password. You can specify a password up to 22 alphanumeric characters. The usable symbols are space and the following; !"#\$%&'()*+,-./:;<=>?@[\\]^_`{ }~ |
| Confirm      | Re-enter the above password for verification. If the password is incorrect, an error message is displayed.   |

To apply the settings, click the **[Send]** button.

## 5 Admin Password

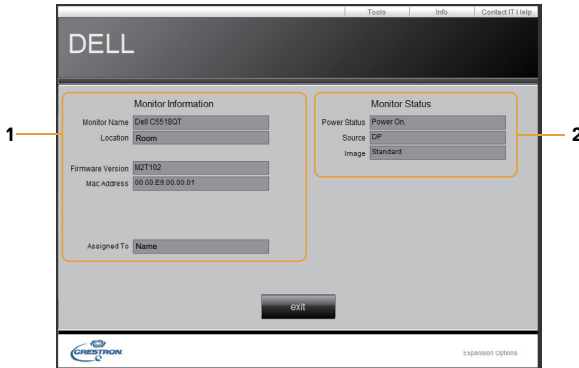
Configures the Admin Password. To prompt the entry of Admin Password before displaying the Tools window, select the checkbox.

| Item         | Description  |
|--------------|--|
| New Password | Configures the password. You can specify a password up to 22 alphanumeric characters. The usable symbols are space and the following; !"#\$%&'()*+,-./:;<=>?@[\\]^_`{ }~ |
| Confirm      | Re-enter the above password for verification. If the password is incorrect, an error message is displayed.   |

To apply the settings, click the **[Send]** button.



# Info window



Displays the settings and status of the monitor. Click the **[Exit]** button to return to the Main window.

## 1 Monitor Information

| Item             | Description  |
|------------------|--|
| Monitor Name     | Displays the monitor name settings.                |
| Location         | Displays the the location name of the monitor.     |
| Firmware Version | Displays the version of the monitor firmware.      |
| MAC address      | Displays the wired LAN MAC address of the monitor. |
| Assigned To      | Displays the user name for the monitor.            |

## 2 Monitor Status

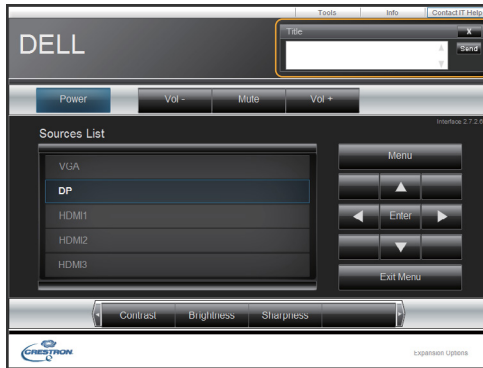
| Item         | Description                                |
|--------------|--|
| Power Status | Displays the current power status.         |
| Source       | Displays the current input signal source.  |
| Image        | Displays the current picture mode setting. |

**NOTE:** Monitor Name, Location and the user name for Assigned To may appear truncated if they are too long.





## Help Desk window



Sends/receives messages to/from the administrator for Crestron RoomView® Express.

| Button | Description      |
|--------|------------------|
| Send   | Sends a message. |

## Emergency Alert



When the administrator for Crestron RoomView® Express sends out an alert message, it will be displayed on the screen.

