



OWNER'S MANUAL

LG Cloud Device All-in-One Thin Client

Please read this manual carefully before operating your set and retain it for future reference.

24CK550W 24CK550N
24CK551W 24CK551N

www.lg.com

Copyright © 2018 LG Electronics Inc. All Rights Reserved.

TABLE OF CONTENTS

LICENSE	2
OPEN SOURCE SOFTWARE NOTICE INFORMATION	2
IMPORTANT PRECAUTIONS	3
IMPORTANT NOTES ON INSTALLING AN OPERATING SYSTEM	6
ASSEMBLING AND PREPARING	6
USING THE MONITOR.....	14
USER SETTINGS	16
TROUBLESHOOTING	22
PRODUCT SPECIFICATION	24

LICENSE

Each model has different licenses. Visit www.lg.com for more information on the license.



The terms HDMI and HDMI High-Definition Multimedia Interface, and the HDMI Logo are trademarks or registered trademarks of HDMI Licensing Administrator, Inc. in the United States and other countries.



MaxxAudio and additional MAXX trademarks are trademarks and/or registered trademarks of Waves Audio Ltd.



The SuperSpeed USB Trident logo is a registered trademark of USB Implementers Forum, Inc.

OPEN SOURCE SOFTWARE NOTICE INFORMATION

To obtain the source code under GPL, LGPL, MPL, and other open source licenses, that is contained in this product, please visit <http://opensource.lge.com>.

In addition to the source code, all referred license terms, warranty disclaimers and copyright notices are available for download.

LG Electronics will also provide open source code to you on CD-ROM for a charge covering the cost of performing such distribution (such as the cost of media, shipping, and handling) upon email request to opensource@lge.com.

This offer is valid for a period of three years after our last shipment of this product. This offer is valid to anyone in receipt of this information.

IMPORTANT PRECAUTIONS

This unit has been engineered and manufactured to ensure your personal safety, however improper use may result in potential electrical shock or fire hazards. In order to allow the proper operation of all safeguards incorporated in this display, observe the following basic rules for its installation, use, and servicing.

On Safety

Use only the power cord supplied with the unit. In case you use another power cord, make sure that it is certified by the applicable national standards if not being provided by the supplier. If the power cable is faulty in any way, please contact the manufacturer or the nearest authorized repair service provider for a replacement.

The appliance coupler is used as the disconnect device.

Please make sure the device is installed near the wall outlet to which it is connected and that the outlet is easily accessible.

Operate the display only from a power source indicated in the specifications of this manual or listed on the display. If you are not sure what type of power supply you have in your home, consult with your dealer.

Overloaded AC outlets and extension cords are dangerous. So are frayed power cords and broken plugs. They may result in a shock or fire hazard. Call your service technician for replacement.

As long as this unit is connected to the AC wall outlet, it is not disconnected from the AC power source even if the unit is turned off.

Do not Open the Display:

- There are no user serviceable components inside.
- There are Dangerous High Voltages inside, even when the power is OFF.
- Contact your dealer if the display is not operating properly.

To Avoid Personal Injury :

- Do not place the display on a sloping shelf unless properly secured.
- Use only a stand recommended by the manufacturer.
- Do not drop an object on or apply impact to the product. Do not throw any toys or objects on the product screen.

It can cause injury to human, problem to product and damage the display.

To Prevent Fire or Hazards:

- Always turn the display OFF if you leave the room for more than a short period of time. Never leave the display ON when leaving the house.
- Keep children from dropping or pushing objects into the display's cabinet openings. Some internal parts carry hazardous voltages.
- Do not add accessories that have not been designed for this display.
- When the display is to be left unattended for an extended period of time, unplug it from the wall outlet.
- In the presence of thunder and lightning, never touch the power cord and signal cable because it can be very dangerous. It can cause electric shock.

On Installation

Do not allow anything to rest upon or roll over the power cord, and do not place the display where the power cord is subject to damage.

Do not use this display near water such as near a bathtub, washbowl, kitchen sink, laundry tub, in a wet basement, or near a swimming pool.

Displays are provided with ventilation openings in the cabinet to allow the release of heat generated during operation. If these openings are blocked, built-up heat can cause failures which may result in a fire hazard.

Therefore, NEVER:

- Block the bottom ventilation slots by placing the display on a bed, sofa, rug, etc.
- Place the display in a built-in enclosure unless proper ventilation is provided.
- Cover the openings with cloth or other material.
- Place the display near or over a radiator or heat source.

Do not rub or strike the Active Matrix LCD with anything hard as this may scratch, mar, or damage the Active Matrix LCD permanently.

Do not press the LCD screen with your finger for a long time as this may cause some afterimages.

Some dot defects may appear as Red, Green or Blue spots on the screen.

However, this will have no impact or effect on the display performance.

If possible, use the recommended resolution to obtain the best image quality for your LCD display. If used under any mode except the recommended resolution, some scaled or processed images may appear on the screen.

However, this is characteristic of the fixed-resolution LCD panel.

Displaying a still image for long time on the monitor may leave persistent image or stain on the monitor screen. To avoid this problem, use a screen saver and power off when this product is not used. Persistent image or stain caused by long time usage are not covered by the warranty on this product.

Do not shock or scratch the front and sides of the screen with metallic objects.

Otherwise, it may cause damage to the screen.

Make sure the panel faces forward and hold it with both hands to move. If you drop the product, the damaged product can cause electric shock or fire. Contact an authorized the service center for repair.

Avoid high temperatures and humidity.

Do not install this product on a wall if it could be exposed to oil or oil mist.

- This may damage the product and cause it to fall.

For displays with glossy bezels the user should consider the placement of the display as the bezel may cause disturbing reflections from surrounding light and bright surfaces.

Do not use products using high voltage around the Monitor. (ex. Electrical Swatter)

- Monitor may have malfunction as its electrical shock.

Precautions to the AC Adapter and Power

If water or any foreign substance goes inside the product (TV, monitor, power cord, or AC adapter), disconnect the power cord immediately and contact the service center.

- Otherwise, this may cause a fire or electric shock due to damage to the product.

Do not touch the power plug or AC adapter with wet hands. If the pins of the plug are wet or dusty, wipe and dry them before use.

- Otherwise, this may cause a fire or electric shock.

Make sure to completely insert the power cord into the AC adapter.

- If loosely connected, the poor connection may cause a fire or electric shock.

Be sure to use power cords and AC adapters provided or approved by LG Electronics, Inc.

- The use of non-approved products may cause a fire or electric shock.

When unplugging the power cord, always pull it by the plug. Do not bend the power cord with excessive force.

- The power line can be damaged, which may cause electric shock or fire.

Be careful not to step or place heavy objects (electronic appliances, clothing, etc.) on the power cord or AC adapter. Be careful not to damage the power cord or AC adapter with sharp objects.

- Damaged power cords may cause a fire or electric shock.

Never disassemble, repair or modify the power cord or AC adapter.

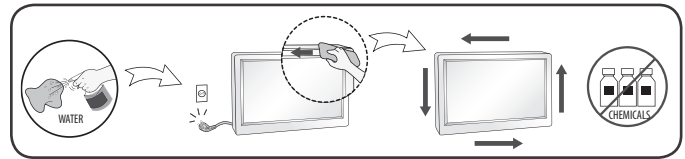
- This may cause a fire or electric shock.

Be sure to keep the outlet, AC adapter, and pins of the power plug clean from dust and etc.

- This may cause a fire.

On Cleaning

- Unplug the display before cleaning the face of the display screen.
- Use a slightly damp (not wet) cloth. Do not use an aerosol directly on the display screen because over-spraying may cause electrical shock.
- When cleaning the product, unplug the power cord and scrub gently with a soft cloth to prevent scratching. Do not clean with a wet cloth or spray water or other liquids directly onto the product. An electric shock may occur. (Do not use chemicals such as benzene, paint thinners or alcohol)
- Spray water onto a soft cloth 2 to 4 times, and use it to clean the front frame; wipe in one direction only. Too much moisture may cause staining.



On Repacking

- Do not throw away the carton and packing materials. They make an ideal container in which to transport the unit. When shipping the unit to another location, repack it in its original material.

IMPORTANT NOTES ON INSTALLING AN OPERATING SYSTEM

(Only 24CK550N, 24CK551N)

This product does not provide an operating system to run the product.

Please note that LG Electronics does not sell an operating system such as Windows, and users are required to purchase and install an operating system to run the product. For more information on purchasing Windows operating systems, please contact Microsoft directly.

Due to the characteristics of the product, only Windows 10 IoT Enterprise LTSB 2016 (RS1) is available for installation. LG Electronics will not be liable for any issues caused by installing and using an operating system other than Windows 10 IoT Enterprise LTSB 2016 (RS1).

How to install Windows 10 IoT Enterprise (RS1)

(Only 24CK550N, 24CK551N)

Follow the steps below to install Windows when you purchase and install Windows 10 IoT Enterprise (RS1).

For more information on installing Windows, refer to the manual or guide provided with Windows.



ASSEMBLING AND PREPARING

⚠ CAUTION

- Always use genuine LG components to ensure safety and product performance.
- The product warranty will not cover damage or injury caused by the use of unauthorized components.
- It is recommended that use the supplied components.
- If you use generic cables not certified by LG, the screen may not display or there may be image noises.
- Illustrations in this document represent typical procedures, so they may look different from the actual product.
- Do not apply foreign substances (oils, lubricants, etc.) to the screw parts when assembling the product. (Doing so may damage the product.)
- Applying excessive force when tightening screws may cause damage to the monitor. Damage caused in this way will not be covered by the product warranty.
- Do not carry the monitor upside down by just holding the base. This may cause the monitor to fall off the stand and could result in personal injury.
- When lifting or moving the monitor, do not touch the monitor screen. The force applied to the monitor screen may cause damage to it.

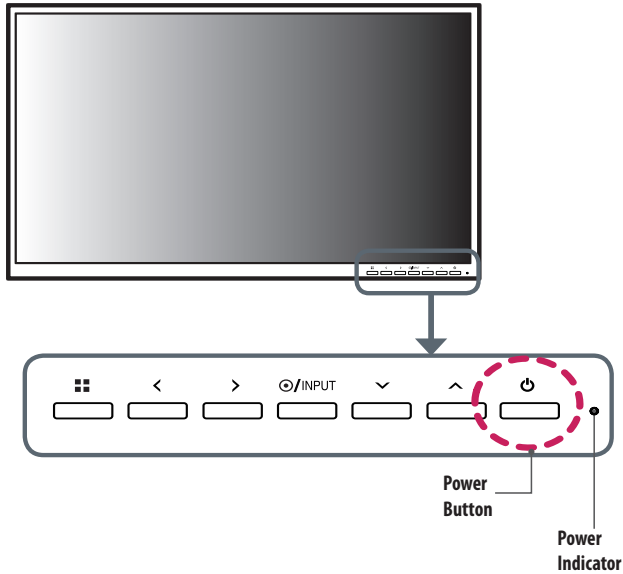
! NOTE

- The components may look different from those illustrated here.
- Without prior notice, all product information and specifications contained in this manual are subject to change to improve the performance of the product.
- To purchase optional accessories, visit an electronics store or an online shopping site, or contact the retailer from which you purchased the product.
- The power cord provided may differ depending upon the region.
- Some games (online, 3D, 2D) may not be supported, and some high-resolution videos (including Full HD and some HD videos) may stutter during playback.

Supported Drivers, Software and Language pack install guide

- You can download and install the latest version from the LGE website (www.lg.com).

Product and Button Description



Front Adjust Button Functions Information

Button	Description	
☰ (Menu)	If the menu is inactive	Activates the main menu.
	If the menu is active	Exits the OSD menu when the button is pressed.
<	If the menu is inactive	Adjusts the volume level of the monitor.
	If the menu is active	Left directional key.
>	If the menu is inactive	Adjusts the volume level of the monitor.
	If the menu is active	Right directional key.
● /INPUT	If the menu is inactive	Change the input signals. The input signal (HDMI/PC) will be changed sequentially. * When the input signal is changed to PC, the PC is turned on. (Depending on the PC setting)
	If the menu is active	Selects and confirms menus or options.
∨	Down directional key.	
∧	Up directional key.	
⏻ (Power button)	HDMI input	Turn the monitor power on/off.
	PC input	Turn the PC power on/off.

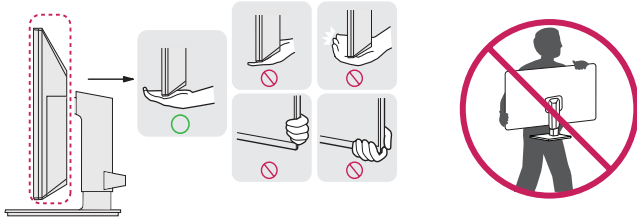
Power Indicator

Mode	LED Color
PC On	White
PC Sleep	Blinking
PC Off	Off

Moving and Lifting the Monitor

When moving or lifting the monitor, follow these instructions to prevent the monitor from being scratched or damaged and to ensure safe transportation, regardless of its shape or size.

- Place the monitor in the original box or packing material before attempting to move it.
- Before moving or lifting the monitor, disconnect the power cord and all other cables.
- Hold the bottom and side of the monitor frame firmly. Do not hold the panel itself.
- When holding the monitor, the screen should face away from you to prevent it from being scratched.
- When transporting the monitor, do not expose the monitor to shock or excessive vibration.
- When moving the monitor, keep it upright and never turn the monitor on its side or tilt it sideways.

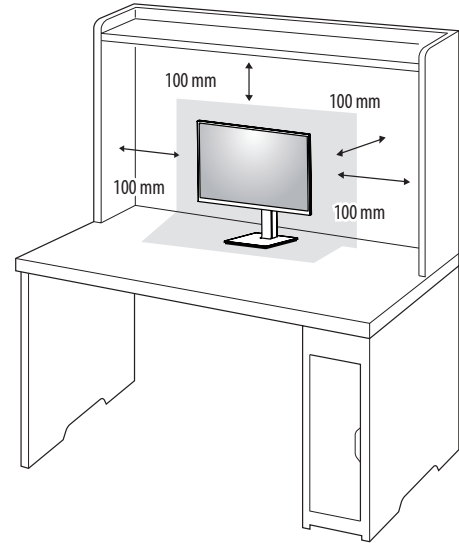


⚠ CAUTION

- Avoid touching the monitor screen as much as possible.
 - This may result in damage to the screen or some of the pixels used to create images.
- If you use the monitor panel without the stand base, its button may cause the monitor to become unstable and fall, resulting in damage to the monitor or human injury. In addition, this may cause the button to malfunction.

Installing on a Table

- Lift the monitor and place it on the table in an upright position. Place the monitor at least 100 mm away from the wall to ensure sufficient ventilation.

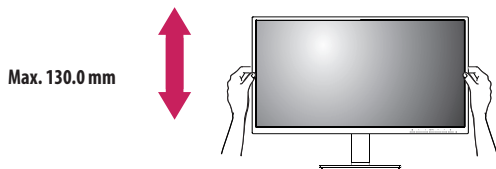


⚠ CAUTION

- Unplug the power cord before moving or installing the monitor. There is risk of electric shock.
- Make sure to use the power cord that is provided in the product package and connect it to a grounded power outlet.
- If you need another power cord, please contact your local dealer or the nearest retail store.

Adjusting the Stand Height

- 1 Place the monitor mounted on the stand base in an upright position.
- 2 Handle the monitor with both hands for safety.



! WARNING

- When adjusting the screen height, do not place your hand on the stand body to avoid injury to your fingers.

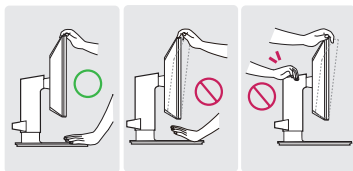
Adjusting the Angle

- 1 Place the monitor mounted on the stand base in an upright position.
- 2 Adjust the angle of the screen.

The angle of the screen can be adjusted forward or backward from -5° to 35° for a comfortable viewing experience.

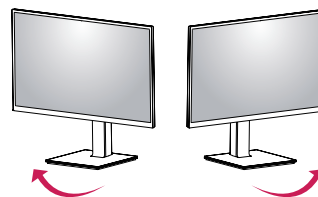
! WARNING

- To avoid injury to the fingers when adjusting the screen, do not hold the lower part of the monitor's frame as illustrated below.
- Be careful not to touch or press the screen area when adjusting the angle of the monitor.



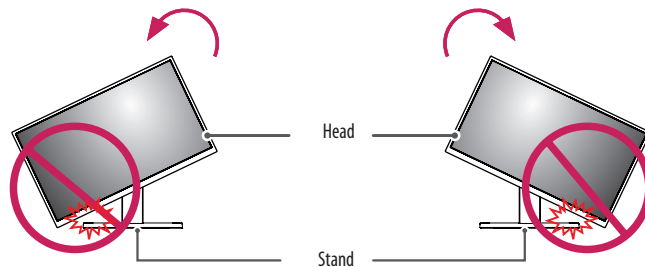
Swivel stand

Swivel 355 degrees and adjust the angle of the Monitor set to suit your view.



Pivot Feature

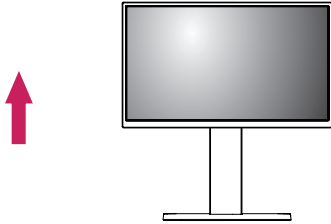
The pivot feature allows the monitor to rotate 90 degrees clockwise or counter-clockwise.



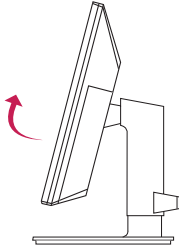
! WARNING

- To avoid scratching the stand base, do not use excessive force or speed when rotating the monitor using the pivot feature, and make sure that the stand does not make contact with the monitor.

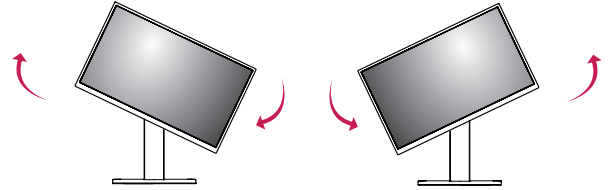
- 1 Raise the monitor up to the maximum height.



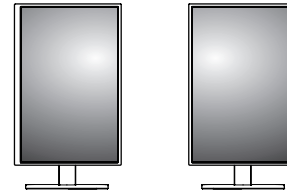
- 2 Adjust the angle of the monitor in the direction of the arrow as shown in the figure.



- 3 Rotate the monitor clockwise or counter-clockwise as shown in the figure.



- 4 Complete the installation by rotating the monitor 90° as shown in the figure.

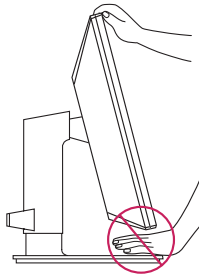


NOTE

- Auto Pivot feature of the display is not supported.
- The screen can be rotated easily using the screen pivot shortcut key provided with your Windows operating system. Note that some Windows versions and some graphics card drivers may use different settings for the screen pivot key or may not support the pivot key at all.
- Windows operating system screen pivot shortcut key
 - 0°: Ctrl + Alt + keyboard up key (↑)
 - 90°: Ctrl + Alt + keyboard left key (←)
 - 180°: Ctrl + Alt + keyboard down key (↓)
 - 270°: Ctrl + Alt + keyboard right key (→)

WARNING

- Take care when rotating the monitor if the cable is connected.
- To avoid injury to your fingers, do not put them between the screen and the stand base when turning the monitor's screen.

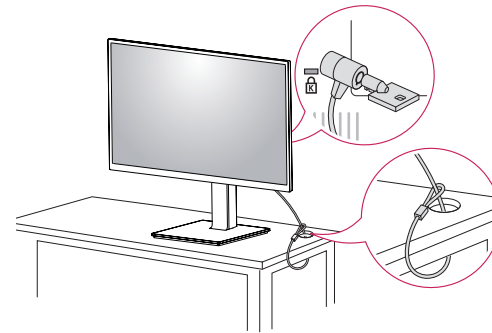


Using the Kensington Lock

The connector for the Kensington security system is located at the bottom of the monitor.

For more information on installation and usage, refer to the Kensington lock owner's manual or visit the website at <http://www.kensington.com>.

Connect the monitor to a table using the Kensington security system cable.



NOTE

- The Kensington security system is optional. You can obtain optional accessories from most electronics stores.

Installing the Wall Mount Plate

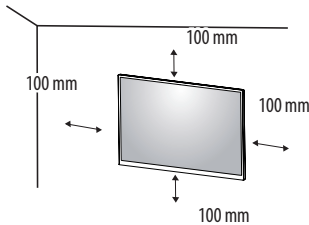
This monitor meets the specifications for the wall mount plate or other compatible devices.

! NOTE

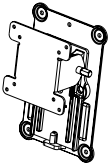
- The wall mount plate is sold separately.
- For more information on installation, refer to the wall mount plate's installation guide.
- Be careful not to apply too much force while mounting the wall mount plate as it may cause damage to the screen.
- Remove the stand before installing the monitor on a wall mount by performing the stand attachment in reverse.

Installing on the Wall

Install the monitor at least 100 mm away from the wall and leave about 100 mm of space at each side of the monitor to ensure sufficient ventilation. Detailed installation instructions can be obtained from your local retail store. Alternatively, please refer to the manual for how to install and set up a tilting wall mounting bracket.



To install the monitor to a wall, attach a wall mounting bracket (optional) to the back of the monitor. Make sure that the wall mounting bracket is securely fixed to the monitor and to the wall.

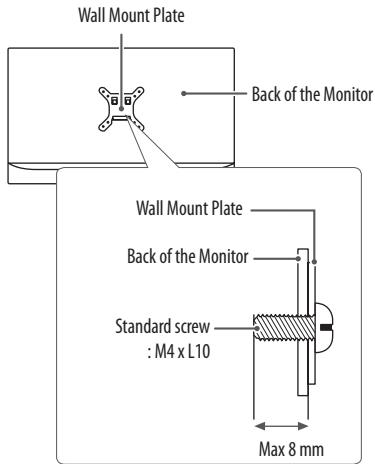
Wall Mount (mm)	100 x 100
Standard screw	M4 x L10
Number of screws	4
Wall Mount Plate (Optional)	RW120 

! NOTE

- A non-VESA standard screw may damage the product and cause the monitor to fall. LG Electronics is not liable for any accidents relating to the use of non-standard screws.
- The wall mount kit includes the installation guide and all necessary parts.
- The wall mounting bracket is optional. You can obtain optional accessories from your local dealer.
- The length of the screw may differ for each wall mounting bracket. If you use screws longer than the standard length, it may damage the inside of the product.
- For more information, please refer to the user manual for the wall mounting bracket.

⚠ CAUTION

- Unplug the power cord before moving or installing the monitor to avoid electric shock.
- Installing the monitor on the ceiling or on a slanted wall may result in the monitor falling off, which could lead to injury. Use an authorized LG wall mount and contact the local dealer or qualified personnel.
- Applying excessive force when tightening screws may cause damage to the monitor. Damage caused in this way will not be covered by the product warranty.
- Use the wall mounting bracket and screws that conform to VESA standards. Damage caused by the use or misuse of inappropriate components will not be covered by the product warranty.
- When measured from the back of the monitor, the length of each installed screw must be 8 mm or less.



USING THE MONITOR

- Illustrations in this manual may differ from the actual product.

Press the ( /INPUT) button and then select the input option.

CAUTION

- Do not press the screen for a prolonged time. This may cause image distortion.
- Do not display a still image on the screen for a prolonged time. This may cause image retention. Use a screensaver if possible.
- When connecting the power cord to the outlet, use a grounded (3-hole) power strip or a grounded power outlet.
- The monitor may flicker when turned on in an area where the temperature is low. This is normal.
- Sometimes red, green, or blue spots may appear on the screen. This is normal.

Connecting to a PC

- This monitor supports the *Plug and Play feature.
- * Plug and Play: A feature that allows you to add a device to your computer without having to reconfigure anything or install any manual drivers.

HDMI Connection

Transmits digital video and audio signals from your PC to the monitor.

CAUTION

- Using a DVI to HDMI / DP (DisplayPort) to HDMI cable may cause compatibility issues.
- Use a certified cable with the HDMI logo attached. If you do not use a certified HDMI cable, the screen may not display or a connection error may occur.
- Recommended HDMI cable types
 - High-Speed HDMI™ cable
 - High-Speed HDMI™ cable with Ethernet

Connecting monitor

DisplayPort Connection

Transmits the PC's digital video and audio signals to the monitor. Connect your monitor which is supported DP using the DisplayPort cable.

NOTE

- There may be no video or audio output depending on the DP (DisplayPort) version of the PC.
- Make sure to use the supplied DisplayPort cable of the product. Otherwise, this may cause the device to malfunction.

Connecting LAN

LAN connection

Connect the router or switch to the monitor.

NOTE

- The LAN cable is sold separately.
- The following LAN cable type can be used: Standard: IEEE 802.3 ETHERNET
- Connect the LAN cable and the peripheral devices to use the cloud monitor.

Connecting AV Devices

HDMI Connection

HDMI transmits digital video and audio signals from your AV device to the monitor.

! NOTE

- Using a DVI to HDMI / DP (DisplayPort) to HDMI cable may cause compatibility issues.
- Use a certified cable with the HDMI logo attached. If you do not use a certified HDMI cable, the screen may not display or a connection error may occur.
- Recommended HDMI cable types
 - High-Speed HDMI™ cable
 - High-Speed HDMI™ cable with Ethernet

Connecting Peripherals

USB Cable connection - PC

! NOTE

- It is recommended you install all Windows Updates to keep your Windows up-to-date before connecting to the product for use.
- Peripheral devices are sold separately.
- A keyboard, mouse, or USB device can be connected to the USB port.
- The charging speed may vary depending on the device.

! CAUTION

Cautions when using a usb device.

- A USB device with an automatic recognition program installed, or that uses its own driver, may not be recognized.
- Some USB devices may not be supported or may not work properly.
- It is recommended to use a USB hub or hard disk drive with power supplied. (If the power supply is not adequate, the USB device may not be recognized properly.)

Connecting Headphones and Microphone

Connect peripherals to the monitor via the headphones and Microphone port.

! NOTE

- Peripheral devices are sold separately.
- Depending on the audio settings of the PC and external device, headphones and speaker functions may be limited.
- If you use angled earphones, it may cause a problem with connecting another external device to the monitor. Therefore, it is recommended to use straight earphones.



Angled



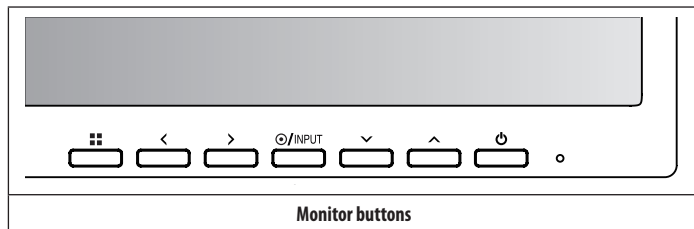
Straight
(Recommend)

USER SETTINGS

! NOTE

- Your monitor's OSD (On Screen Display) may differ slightly from that shown in this manual.

Activating the Main Menu



Menu Settings

- To view the OSD menu, press the button and then enter the Settings.
- Use the / / / to adjust the options.
- To return to the upper menu or set other menu items, press the or /INPUT it.
- If you want to exit the OSD menu, press the button.

The applicable setting options are as shown below.



[Quick Settings]



[Picture]



[Sound]



[General]



[Reset]

Quick Settings

☰ > [Quick Settings]	Description	
[Brightness]	Adjusts the brightness of the screen.	
[Contrast]	Adjusts the color contrast of the screen.	
[Volume]	Adjusts the volume level. ! NOTE <ul style="list-style-type: none"> You can adjust [Mute] / [Unmute] by √ key in the [Volume] menu. 	
[Ratio]	Adjusts the screen ratio.	
[Wide]		Displays the video in wide-screen, regardless of the video signal input.
[Original]		Displays a video according to the input video signal aspect ratio.
[SMART ENERGY SAVING]	Conserve energy by using luminance compensation algorithm.	
[High]		Enables [SMART ENERGY SAVING] you can save energy with this energy- high efficient.
[Low]		Enables [SMART ENERGY SAVING] you can save energy with this energy- low efficient.
[Off]		Disables [SMART ENERGY SAVING].

! NOTE


- The ratio is disabled in the interlaced signal.
- If option of [SMART ENERGY SAVING] is [High] or [Low], monitor luminance become higher or lower depend on source.

Picture



☐☐> [Picture]		Description		
[Picture Mode]	[Custom]	Allows the user to adjust each element. The color mode of the main menu can be adjusted.		
	[Reader 1]	It is a mode that the screen is adjusted to the best for the newspaper. If you want screen more bright, you can control brightness in Menu OSD.		
	[Reader 2]	It is a mode that the screen is adjusted to the best for the cartoon. If you want screen more bright, you can control brightness in Menu OSD.		
	[Photo]	Optimizes the screen to view photos.		
	[Cinema]	Optimizes the screen to improve the visual effects of a video.		
	[Color Weakness]	<p>This mode is for users who cannot distinguish red. It enables users with color weakness to easily distinguish between the two colors.</p> <p>NOTE</p> <ul style="list-style-type: none"> This is subsidiary for color weakness user. Therefore if you feel uncomfortable with the screen, please turn off this function. This function can't distinguish some colors in some images. 		
	[Game]	Optimizes the screen for gameplay.		
[Picture Adjust]	[SUPER RESOLUTION+]	[High]	Optimized picture quality is displayed when a user wants crystal clear images. It is effective for high quality video or game.	
		[Middle]	The optimized picture quality is displayed when a user wants images between low and high modes for comfortable viewing. It is effective for UCC or SD video.	
		[Low]	The optimized picture quality is displayed when a user wants smooth and natural images. It is effective for slow -moving pictures or still images.	
		[Off]	Select this option for everyday viewing. [SUPER RESOLUTION+] is turned off in this mode.	
	[Sharpness]	Adjusts the sharpness of the screen.		
	[Black Level]	Sets the offset level. (HDMI only)		
		<ul style="list-style-type: none"> Offset: A reference for video signals. Offset is the darkest color that the monitor can display. 		
		[High]	Keeps the current contrast ratio of the screen.	
	[DFC]	[Low]	Lowers the black levels and raises the white levels from the current contrast ratio of the screen.	
		[On]	Adjusts the brightness automatically according to the screen.	
[Off]		Disables the [DFC] feature.		

☰> [Picture]	Description		
[Game Adjust]	[Response Time]	Sets a response time for displayed pictures based on the movement of the picture on the screen. For a normal environment, it is recommended that you use [Fast]. When there is a lot of motion, it is recommended that you use [Faster]. Setting to [Faster] may cause image sticking.	
		[Faster]	Sets the response time to Faster.
		[Fast]	Sets the response time to Fast.
		[Normal]	Sets the response time to Normal.
		[Off]	Does not use the response time improvement feature.
	[Black Stabilizer]	You can control the black contrast to have better visibility in dark scenes. Increasing the [Black Stabilizer] value brightens the low gray level area on the screen. (You can easily distinguish objects on dark game screens.) Reducing the [Black Stabilizer] value darkens the low gray level area and increases the dynamic contrast on the screen.	
[Color Adjust]	[Gamma]	[Mode 1] [Mode 2] [Mode 3]	The higher the gamma value, the darker the image becomes. Likewise, the lower the gamma value, the lighter the image becomes.
		[Mode 4]	If you do not need to adjust the gamma settings, select [Mode 4].
	[Color Temp]	[Warm]	Sets the screen color to a reddish tone.
		[Medium]	Sets the screen color to between a red and blue tone.
		[Cool]	Sets the screen color to a bluish tone.
		[Custom]	The user can adjust it to red, green, or blue by customization.
	[Red]	You can customize the picture color using [Red], [Green], and [Blue] colors.	
	[Green]		
	[Blue]		
	[Six Color]	[Hue]	Adjusts the tone of the screen colors.
		[Saturation]	Adjusts the saturation of the screen colors. The lower the value, the less saturated and brighter the colors become. The higher the value, the more saturated and darker the colors become.
	[Reset]	[Reset]	Returns the color settings to the default settings.
		[Cancel]	Cancel the select.

Sound

 > [Sound]	Description	
[MaxxAudio]	[On]	MaxxAudio® by Waves, recipient of a Technical GRAMMY Award® is a suite of studio-quality sound tools for a superior listening experience.
	[Off]	Disables the [MaxxAudio] function.
[MaxxAudio Settings]	The user can set the sound quality manually.	
	[MaxxBass]	Bass Enhancement.
	[MaxxTreble]	Treble Enhancement.
	[MaxxDialog]	Dialog Enhancement.
	[Maxx3D]	Enhances the three dimensional effect of the sound.
	[Reset]	[Reset]
[Cancel]		Cancel the select.
[Midnight Mode]	[On]	Lets you enjoy rich and full sound at a low volume.
	[Off]	Disables [Midnight Mode].


General

 > [General]	Description	
[Language]	Sets the menu screen to the desired language.	
[Automatic Standby]	Feature that automatically turns off the monitor when there is no movement on the screen for a period of time. You can set a timer for the auto-off function. ([Off], [4H], [6H], and [8H]) (only for HDMI)	
[OSD Lock]	This feature disables the configuration and adjustment of menus.	
	[On]	Enables [OSD Lock].
	[Off]	Disables [OSD Lock].
 NOTE <ul style="list-style-type: none"> Deactivates all functions except [Brightness], [Contrast], [Volume] and [OSD Lock] menu. 		

Reset

☰ > [Reset]	Description	
[Do you want to reset your settings?]	[Reset]	Returns to the default settings.
	[Cancel]	Cancel the select.

TROUBLESHOOTING

Nothing is displayed on the screen.	
Is the monitor's power cord plugged in?	<ul style="list-style-type: none">• Check if the power cord is correctly plugged into the power outlet.
Is the power LED on?	<ul style="list-style-type: none">• Check the power cable connection and press the power button.
Is the power on and the power LED displaying?	<ul style="list-style-type: none">• Change the input by pressing the /INPUT key.
Is the [No Signal] message being displayed?	<ul style="list-style-type: none">• This is displayed when the signal cable between the PC and the monitor is missing or disconnected. Check the cable and reconnect it.
Is the [Out of Range] message being displayed?	<ul style="list-style-type: none">• This occurs when signals transferred from the PC (graphics card) are out of the horizontal or vertical frequency range of the monitor. Please see the Product Specification section of this manual to set the appropriate frequency.
Screen display is unstable and shaky. / Images displayed on the monitor leave shadow trails.	
Did you select the appropriate resolution?	<ul style="list-style-type: none">• If the selected resolution is HDMI 1080i 60/50 Hz (interlaced), the screen may be flickering. Change the resolution to 1080p or the recommended resolution.• Not setting the graphics card to the recommended (optimal) resolution may result in blurred text, a dimmed screen, a truncated display area or misalignment of the display.• The setting methods may be different depending on the computer or operating system, and some resolutions may not be available depending on the performance of the graphics card. If this is the case, contact the manufacturer of the computer or graphics card for assistance.
Does image sticking occur even when the monitor is turned off?	<ul style="list-style-type: none">• Displaying a still image for a prolonged time may cause damage to the screen, resulting in the retention of the image.• To extend the lifetime of the monitor, use a screensaver.
Are there spots on the screen?	<ul style="list-style-type: none">• When using the monitor, pixilated spots (red, green, blue, white, or black) may appear on the screen. This is normal for an LCD screen. It is not an error, nor is it related to the monitor's performance.
Some features are disabled.	
Are some functions not available when you press the Menu button?	<ul style="list-style-type: none">• The OSD is locked. Disable [OSD Lock] in [General].

Do you see an "Unrecognized monitor, Plug and Play (VESA DDC) monitor found" message?	
Have you installed the display driver?	<ul style="list-style-type: none">• Be sure to install the display driver from our web site: http://www.lg.com.• Make sure to check if the graphics card supports Plug and Play function.
No sound from the headphone port.	
Are images displayed without sound?	<ul style="list-style-type: none">• Make sure that the headphone port connections are made properly.• Try increasing the volume with keys.• Set the audio output of the PC to the monitor you are using. (The settings may differ depending on the operating system (OS) you use.)

PRODUCT SPECIFICATION

Color Depth	8-bit color is supported.		
Resolution	1920x1080 @ 60Hz		
Power Sources	Power Rating	19 V --- 3.0 A	
	Power Consumption	Operating Mode MNT only : 23.6 W (Typical)* With PC : 38.2 W (Typical)* 77.1 kWh (ENERGY STAR® standard)** Sleep Mode: ≤ 0.9 W *** Off Mode: ≤ 0.7 W ***	
Environmental Conditions	Operating Conditions	Temperature	0 °C to 40 °C
		Humidity	Less than 80 %
	Storing Conditions	Temperature	-20 °C to 60 °C
		Humidity	Less than 85 %
AC/DC Adapter	DA-65G19, manufactured by APD Input: 100 - 240 V ~ 50 / 60 Hz 1.6 A Output: 19 V --- 3.42 A		
Dimensions	Monitor Size (Width x Height x Depth)		
	With Stand	Max.	553.8 x 512.9 x 240 (mm)
		Min.	553.8 x 382.9 x 240 (mm)
Without Stand	553.8 x 333.1 x 67.6 (mm)		
Weight (Without Packaging)	With Stand	6.1 kg	
	Without Stand	4.0 kg	

Specifications are subject to change without notice.

* The Operating Mode of Power Consumption is measured with LGE test standard. (Full White pattern, Maximum resolution)

* The Power Consumption level can be different by operating condition and monitor setting.

** The Operating Mode of Power Consumption is measured with ENERGY STAR® test standard. (Only 24CK550W, 24CK551W)

*** The PC Sleep mode and Off mode is measured with monitor outgoing condition.

Factory Support Mode (Preset Mode, PC)

HDMI

Preset Mode	Horizontal Frequency (kHz)	Vertical Frequency (Hz)	Polarity (H/V)	Remarks
640 x 480	31.469	59.94	-/-	
640 x 480	37.5	75	-/-	
720 x 400	31.468	70.08	-/+	
800 x 600	37.879	60.317	+/+	
800 x 600	46.875	75.0	+/+	
1024 x 768	48.363	60.0	-/-	
1024 x 768	60.023	75.029	+/+	
1152 x 864	67.500	75.000	+/+	
1280 x 1024	63.981	60.02	+/+	
1280 x 1024	79.976	75.025	+/+	
1680 x 1050	65.290	59.954	-/+	
1920 x 1080	67.50	60	+/+	

Input Timing (Video)

Factory support mode (Preset Mode)	Horizontal frequency (KHz)	Vertical frequency (Hz)	HDMI	Remarks
480P	31.5	60	0	
576P	31.25	50	0	
720P	37.5	50	0	
720P	45	60	0	
1080P	56.25	50	0	
1080P	67.5	60	0	Recommend

Dual Band Wireless module (AC3168) Specifications

Wireless LAN	
Standard	IEEE 802.11a/b/g/n/ac
Frequency Range	Output Power (Max.)
2400 to 2483.5 MHz	15.5 dBm
5150 to 5725 MHz	15.5 dBm
5725 to 5850 MHz	15.5 dBm
Bluetooth	
Frequency Range	Output Power (Max.)
2400 to 2483.5 MHz	10 dBm
<ul style="list-style-type: none"> As band channels can vary per country, the user cannot change or adjust the operating frequency. This product is configured for the regional frequency table. For consideration of the user, this device should be installed and operated with a minimum distance of 20 cm between the device and the body. "IEEE 802.11ac" is not available in all countries. 	



WARNING: This equipment is compliant with Class A of CISPR 32. In a residential environment this equipment may cause radio interference.

This device can be used in all regions. Read the owner's manual carefully and keep it at hand. Please note that the label attached to the product provides information for technical support.

Model

Serial No.



(Only 24CK550W, 24CK551W)

ENERGY STAR® is a set of power-saving guidelines issued by the U.S. Environmental Protection Agency (EPA).

As an ENERGY STAR® Partner LGE U. S. A., Inc. has determined that this product meets the ENERGY STAR® guidelines for energy efficiency.

Refer to ENERGYSTAR.gov for more information on the ENERGY STAR® program.