

# 31.5-inch 4K IPS Surgical Monitor

| 32HL714S |

## Superior Picture Quality for Fine Surgery

### 31.5-inch 4K (3840x2160) IPS Display | 178° Wide Viewing Angle

The larger 32HL714S, 31.5-inch 4K display with IPS, helps surgeons easily identify details, presenting accurate, realistic images during a procedure. In addition, when multiple doctors take part in the surgery, the wide viewing angle of the IPS panel allows each doctor to view content on the monitor from different angles with minimal color shift.



### HDR 10

The 32HL714S allows accurate reproduction of HDR contents from devices such as surgical cameras that support HDR. This ensures image from HDR-supported endoscope cameras are displayed in a way that closely resembles how it would appear to actual visual observation.

### 12G-SDI Support

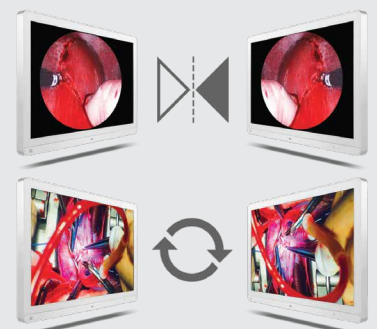
With the usage of 4K increasing in the medical field, successful transmission of 4K medical images without latency is pivotal. The 32HL714S supports 12G-SDI, which enable long-distance transmission of 4K-equivalent signals over a single coaxial cable. Therefore, the transmission is stable even until the long distance of 70 meters (max).

\*12G-SDI input transmission distance : max. 70m (When using BELDEN cable : max.50 / CANARE UHD 5.5 cable : max. 70m)

## Optimized for Surgical Environments

### Mirror & Rotation Mode

Conveniently flip and rotate the monitor to adjust to your surgery needs with the Mirror & Rotation Mode setting. Depending on the situation, use Mirror Mode to share the ongoing surgical procedure in real-time, or Rotation Mode to adjust the screen for an easy-to-operate angle regardless of the surgical camera position.



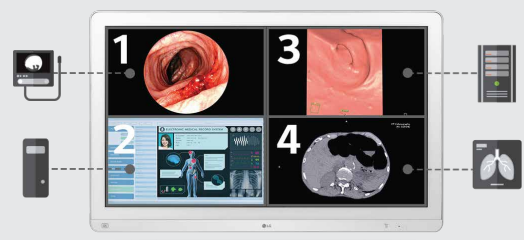
### Failover Input Switch

32HL714S allows the display to automatically switch to a failover (backup) input in case the main input is missing. The display will automatically restore the main input once the signal is back.

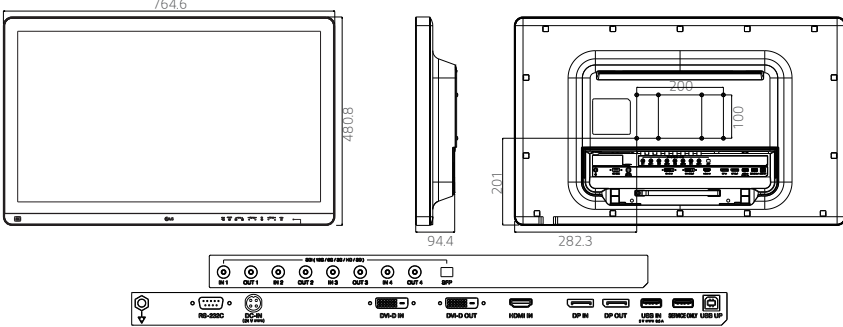
## Enhanced Connectivity for Multi Modalities

### Up to 4PBP (Picture by Picture) | PIP Multi-Modality Connectivity

The 32HL714S allows you to use 2PBP, 3PBP, and even 4PBP. The support up to 4PBP allows medical professionals to see a combination of endoscopic and fluoroscopic images while monitoring vital signs. In other words, different input signals, through 12G-SDI, DVI, DisplayPort and HDMI, can be viewed on one monitor simultaneously.



# Specification

Model		32HL714S
		
Panel	Panel Type	IPS
	Inch (Aspect Ratio)	31.5-inch (16:9)
	Resolution	4K (3840 x 2160)
	Surface Treatment	Protection Glass (1.6t, Anti-reflection, Anti-fingerprint)
	Color Gamut (Typ.)	sRGB 115% (Area), sRGB over 99% (Coverage)
	Viewing Angles (CR≥10)	178° (Right/Left), 178° (Up/Down)
	Brightness (Typ.)	800cd/m <sup>2</sup>
	Contrast Ratio (Typ.)	1300:1
	Response Time (GTG*)	14ms (Off- setting), 5ms (Faster- setting)
Feature	DICOM Compliant	Yes
	HW Calibration	Yes (True Color Pro)
	HDR	HDR 10
Video Signals	Input Terminals	HDMI x1, DisplayPort x1, DVI x1, 12G-SDI x1
	Output Terminals	DisplayPort x1, DVI x1, 12G-SDI x1
Connectivity	USB	1 upstream, 1 downstream
Power	Power Requirements	100-240Vac, 50-60Hz
	Power Consumption (Max.)	180W
	Power Consumption (DC Off)	Less than 0.3W
Resistance Rating		IP35 (Front), IP32 (Except for Front), IK06
Certifications & Standards		IEC(IEC 60601-1 / IEC 60601-1-2), EN(EN 60601-1 / EN 60601-1-2) IEC(IEC 60950-1 / IEC 55032, 55024), EN (EN 60950-1 / EN 55032, 55024) cUL (ANSI/AAMI ES 60601-1, CSA CAN/CSA-C22.2 NO. 60601-1) FCC (FCC part 15 Class A), FDA (Rgistration (Class I)), RoHS, REACH, WEEE
User Convenience	Screen Filp	Mirror Mode & Rotation Mode
	PBP / PIP	PBP (2/3/4PBP) / PIP
	Failover Input Switch	Yes
Physical Specifications	Weight (without stand)	13.5 kg (29.8 lb)

\*GTG : Gray to gray response time



**LG Electronics Inc.**  
<http://www.lge.com/global/business>

Copyright © 2020 LG Electronics. All Rights Reserved.