



Owner's Manual

# LG UltraGear™ Gaming Monitor

(LED Monitor\*)

---

\* LG LED Monitor applies LCD screen with LED backlights.

Please read this manual carefully before operating your set and retain it for future reference.

32GP750

[www.lg.com](http://www.lg.com)

Copyright © 2021 LG Electronics Inc. All Rights Reserved.

# TABLE OF CONTENTS

LICENSE .....	2
OPEN SOURCE SOFTWARE NOTICE INFORMATION .....	3
ASSEMBLING AND PREPARING .....	3
USING THE MONITOR.....	13
USER SETTINGS .....	16
TROUBLESHOOTING .....	22
PRODUCT SPECIFICATION.....	25

# LICENSE

Each model has different licenses. Visit [www.lg.com](http://www.lg.com) for more information on the license.



The terms HDMI, HDMI High-Definition Multimedia Interface, and the HDMI Logo are trademarks or registered trademarks of HDMI Licensing Administrator, Inc.

# OPEN SOURCE SOFTWARE NOTICE INFORMATION

To obtain the source code under GPL, LGPL, MPL, and other open source licenses, that is contained in this product, please visit <http://opensource.lge.com>. In addition to the source code, all referred license terms, warranty disclaimers and copyright notices are available for download. LG Electronics will also provide open source code to you on CD-ROM for a charge covering the cost of performing such distribution (such as the cost of media, shipping, and handling) upon email request to [opensource@lge.com](mailto:opensource@lge.com). This offer is valid for a period of three years after our last shipment of this product. This offer is valid to anyone in receipt of this information.

# ASSEMBLING AND PREPARING

## CAUTION

- Always use genuine LG components to ensure safety and product performance.
- The product warranty will not cover damage or injury caused by the use of unauthorized components.
- It is recommended that use the supplied components.
- Illustrations in this document represent typical procedures, so they may look different from the actual product.
- Do not apply foreign substances (oils, lubricants, etc.) to the screw parts when assembling the product. (Doing so may damage the product.)
- Applying excessive force when tightening screws may cause damage to the monitor. Damage caused in this way will not be covered by the product warranty.
- Do not carry the monitor upside down by just holding the base. This may cause the monitor to fall off the stand and could result in personal injury.
- When lifting or moving the monitor, do not touch the monitor screen. The force applied to the monitor screen may cause damage to it.
- For wave pattern on appearance, unlike the general method of coating, it's applied to added glittering material in raw material. With no peeled-off appearance, it has good durability. Please use it with confidence because there is no problem in using the product at all.

**! NOTE**

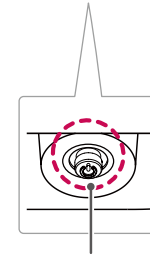
- The components may look different from those illustrated here.
- Without prior notice, all product information and specifications contained in this manual are subject to change to improve the performance of the product.
- To purchase optional accessories, visit an electronics store or an online shopping site, or contact the retailer from which you purchased the product.
- The power cord provided may differ depending upon the region.

## Supported Drivers and Software

You can download and install the latest version from the LGE website ([www.lg.com](http://www.lg.com)).

- Monitor Driver / OnScreen Control

## Product and Button Description

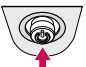





**Joystick Button**

## How to Use the Joystick Button

You can easily control the functions of the monitor by pressing the joystick button or moving it left/right/up/down with your finger.

### Basic Functions

A	B	C	D
			

**A (Power on):** Press the joystick button once with your finger to turn on the monitor.

**B (Power off):** Press and hold the joystick button once with your finger to turn off the monitor.

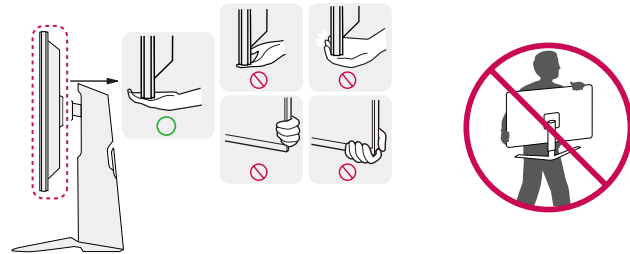
**C (Volume control):** You can control the volume by moving the joystick button left/right.

**D:** Enters the [Accessibility] menu.

## Moving and Lifting the Monitor

When moving or lifting the monitor, follow these instructions to prevent the monitor from being scratched or damaged and to ensure safe transportation, regardless of its shape or size.

- Place the monitor in the original box or packing material before attempting to move it.
- Before moving or lifting the monitor, disconnect the power cord and all other cables.
- Hold the bottom and side of the monitor frame firmly. Do not hold the panel itself.
- When holding the monitor, the screen should face away from you to prevent it from being scratched.
- When transporting the monitor, do not expose the monitor to shock or excessive vibration.
- When moving the monitor, keep it upright and never turn the monitor on its side or tilt it sideways.

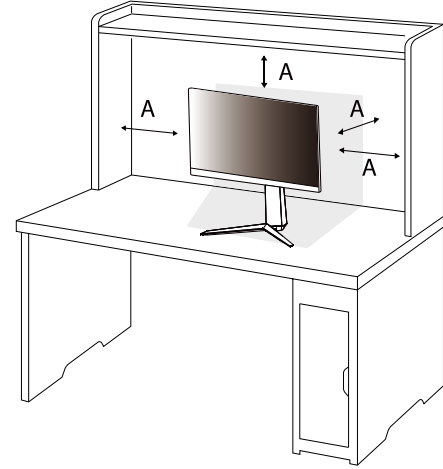


**⚠ CAUTION**

- Avoid touching the monitor screen as much as possible.
  - This may result in damage to the screen or some of the pixels used to create images.
- If you use the monitor panel without the stand base, its joystick button may cause the monitor to become unstable and fall, resulting in damage to the monitor or human injury. In addition, this may cause the joystick button to malfunction.

**Installing on a Table**

- Lift the monitor and place it on the table in an upright position. Place the monitor at least 100 mm (3.9 inches) away from the wall to ensure sufficient ventilation.



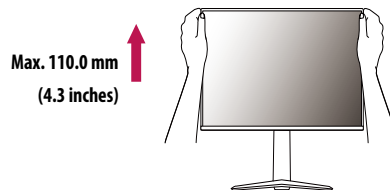
A: 100 mm (3.9 inches)

 **CAUTION**

- Unplug the power cord before moving or installing the monitor. There is risk of electric shock.
- Make sure to use the power cord that is provided in the product package and connect it to a grounded power outlet.
- If you need another power cord, please contact your local dealer or the nearest retail store.

## Adjusting the Stand Height

- 1 Place the monitor mounted on the stand base in an upright position.
- 2 Handle the monitor with both hands for safety.



 **WARNING**

- When adjusting the screen height, do not place your hand on the stand body to avoid injury to your fingers.

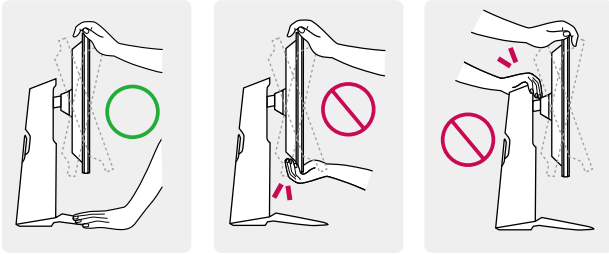
## Adjusting the Angle

- 1 Place the monitor mounted on the stand base in an upright position.
- 2 Adjust the angle of the screen.

The angle of the screen can be adjusted forward or backward from  $-5^{\circ}$  to  $15^{\circ}$  for a comfortable viewing experience.

### WARNING

- To avoid injury to the fingers when adjusting the screen, do not hold the lower part of the monitor's frame as illustrated below.
- Be careful not to touch or press the screen area when adjusting the angle of the monitor.

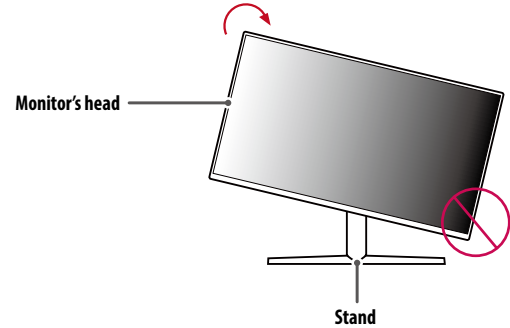


## Pivot Feature

The pivot feature allows the monitor to rotate  $90^{\circ}$  clockwise.

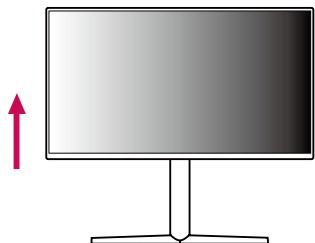
### WARNING

- When using the Pivot function, do not rotate the monitor too fast or with excessive force.
  - The head may come in contact with the stand and scratch the base.
  - Be careful as you may injure your finger by jamming it between the head and the stand.

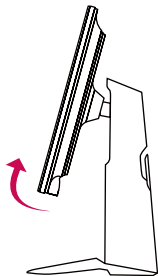




- 1 Raise the monitor up to the maximum height.



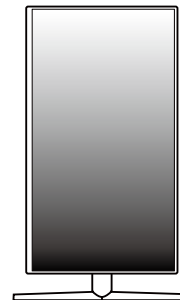
- 2 Adjust the angle of the monitor in the direction of the arrow as shown in the figure.



- 3 Rotate the monitor clockwise as shown in the figure.



- 4 Complete the installation by rotating the monitor 90° as shown in the figure.



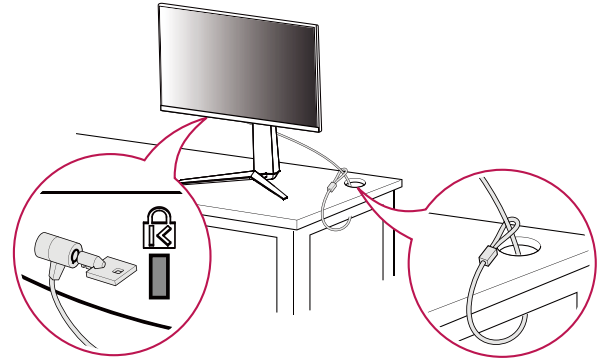
**! NOTE**

- Auto Pivot feature of the display is not supported.
- The screen can be rotated easily using the screen pivot shortcut key provided with your Windows operating system. Note that some Windows versions and some graphics card drivers may use different settings for the screen pivot key or may not support the pivot key at all.

**Using the Kensington Lock**

For more information on installation and usage, refer to the Kensington lock owner's manual or visit the website at <http://www.kensington.com>.

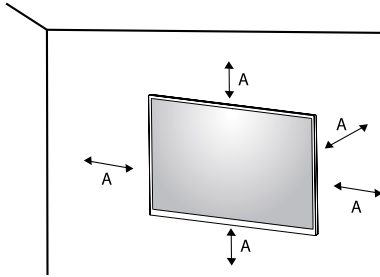
Connect the monitor to a table using the Kensington security system cable.

**! NOTE**

- The Kensington security system is optional. You can obtain optional accessories from most electronics stores.

## Installing on the Wall

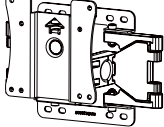
This monitor meets the specifications for the wall mount plate or other compatible devices. Install the monitor at least 100 mm (3.9 inches) away from the wall and leave about 100 mm (3.9 inches) of space at each side of the monitor to ensure sufficient ventilation. Detailed installation instructions can be obtained from your local retail store. Alternatively, please refer to the manual for how to install and set up a tilting wall mounting bracket.



A: 100 mm (3.9 inches)

## Installing the Wall Mount Plate

To install the monitor to a wall, attach a wall mounting bracket (optional) to the back of the monitor. Make sure that the wall mounting bracket is securely fixed to the monitor and to the wall.

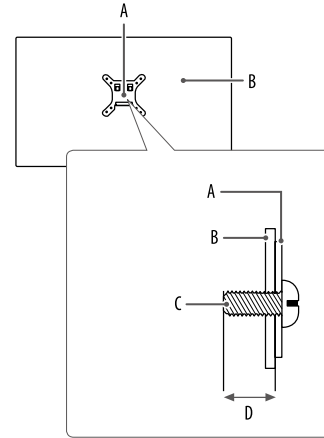
<b>Wall Mount (mm)</b>	100 x 100
<b>Standard screw</b>	M4 x L10
<b>Number of screws</b>	4
<b>Wall Mount Plate (Optional)</b>	LSW149 

### ! NOTE

- Use the screws specified by VESA standards.
- The wall mount kit includes the installation guide and all necessary parts.
- The wall mounting bracket is optional. You can obtain optional accessories from your local dealer.
- The length of the screw may differ for each wall mounting bracket. If you use screws longer than the standard length, it may damage the inside of the product.
- For more information, please refer to the user manual for the wall mounting bracket.
- Be careful not to apply too much force while mounting the wall mount plate as it may cause damage to the screen.
- Remove the stand before installing the monitor on a wall mount by performing the stand attachment in reverse.

**⚠ CAUTION**

- Unplug the power cord before moving or installing the monitor to avoid electric shock.
- Installing the monitor on the ceiling or on a slanted wall may result in the monitor falling off, which could lead to injury. Use an authorized LG wall mount and contact the local dealer or qualified personnel.
- To prevent injury, this apparatus must be securely attached to the wall in accordance with the installation instructions.
- Applying excessive force when tightening screws may cause damage to the monitor. Damage caused in this way will not be covered by the product warranty.
- Use the wall mounting bracket and screws that conform to VESA standards. Damage caused by the use or misuse of inappropriate components will not be covered by the product warranty.
- When measured from the back of the monitor, the length of each installed screw must be 8 mm (0.3 inches) or less.



A: Wall Mount Plate

B: Back of the Monitor

C: Standard screw

D: Max. 8 mm (0.3 inches)

# USING THE MONITOR

- Illustrations in this manual may differ from the actual product.

Press the joystick button, go to [Settings] > [Input], and then select the input option.

## CAUTION

- If you use generic cables not certified by LG, the screen may not display or there may be image noises.
- Do not press the screen for a prolonged time. This may cause image distortion.
- Do not display a still image on the screen for a prolonged time. This may cause image retention. Use a PC screensaver if possible.
- When connecting the power cord to the outlet, use a grounded (3-hole) power strip or a grounded power outlet.
- The monitor may flicker when turned on in an area where the temperature is low. This is normal.
- Sometimes red, green, or blue spots may appear on the screen. This is normal.

## Connecting to a PC

- This monitor supports the Plug and Play\* feature.
- \* Plug and Play: A feature that allows you to add a device to your computer without having to reconfigure anything or install any manual drivers.

### HDMI Connection

Transmits digital video and audio signals from your PC to the monitor.

## CAUTION

- Using a DVI to HDMI / DP (DisplayPort) to HDMI cable may cause compatibility issues.
- Use a certified cable with the HDMI logo attached. If you do not use a certified HDMI cable, the screen may not display or a connection error may occur.
- Recommended HDMI cable types
  - High Speed HDMI®/™ cable
  - High Speed HDMI®/™ cable with Ethernet

## DisplayPort Connection

Transmits digital video and audio signals from your PC to the monitor.

### ! NOTE

- There may be no video or audio output depending on the DP (DisplayPort) version of the PC.
- Make sure to use the supplied DisplayPort cable of the product. Otherwise, this may cause the device to malfunction.
- If you are using a Mini DisplayPort output graphics card, use a Mini DP to DP (Mini DisplayPort to DisplayPort) cable or gender that supports DisplayPort 1.4. (Sold separately)

## Connecting AV Devices

### HDMI Connection

HDMI transmits digital video and audio signals from your AV device to the monitor.

### ! NOTE

- Using a DVI to HDMI / DP (DisplayPort) to HDMI cable may cause compatibility issues.
- Use a certified cable with the HDMI logo attached. If you do not use a certified HDMI cable, the screen may not display or a connection error may occur.
- Recommended HDMI cable types
  - High Speed HDMI®/™ cable
  - High Speed HDMI®/™ cable with Ethernet

## Connecting Headphones

Connect peripherals to the monitor via the headphones port.

### ! NOTE

- Peripheral devices are sold separately.
- Depending on the audio settings of the PC and external device, headphones and speaker functions may be limited.
- If you use angled earphones, it may cause a problem with connecting another external device to the monitor. Therefore, it is recommended to use straight earphones.



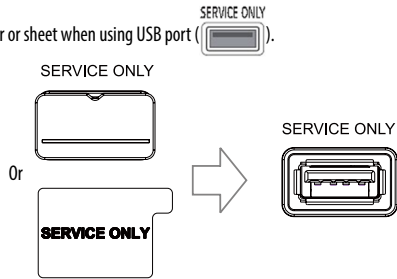
Angled



Straight  
(Recommend)

## Upgrading the Software via USB

- 1 Remove the cover or sheet when using USB port (SERVICE ONLY).



- 2 When the monitor screen operates normally, insert the USB storage device containing the upgrade software in the USB port (SERVICE ONLY).
- 3 When the software upgrade message appears, select OK to start the upgrade.
- 4 Your Monitor will turn itself off and on again automatically after completing software upgrade.

### ! NOTE

- The USB port can only be used for software upgrade.
- Use only those USB storage devices formatted with FAT, FAT32 or NTFS File System provided by Windows.
- USB storage devices with a built-in auto recognition program or their own driver may not work.
- Some USB storage devices may not work or may work improperly.
- Do not turn off the monitor or remove your storage device during the upgrade process.
- The upgrade file should be located in the LG\_MNT folder under the root directory of USB storage device.
- You can download the upgrade file from the LGE website. (This is available on certain models only.)

※ For detailed guide, please refer to the LGE website provided with the upgrade file.

# USER SETTINGS

## NOTE

- Your monitor's OSD (On Screen Display) may differ slightly from that shown in this manual.
- When **Beep Guide** is activated, pressing the joystick button will take you to **Settings** right away.

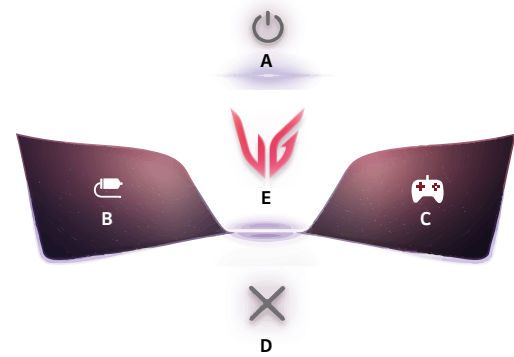
## Activating the Main Menu



Joystick Button

- 1 Press the joystick button on the bottom of the monitor.
- 2 Move the joystick up/down and left/right to set the options.
- 3 Press the joystick button once more to exit the main menu.

## Main Menu Features



Main Menu	Description
A: [Power Off]	Turns off the monitor.
B: [Input]	Sets input mode.
C: [Game Mode]	Sets the game mode for gaming.
D: [Exit]	Exits the main menu.
E: [Settings]	Configures the screen settings.



## Menu Settings

- 1 To view the OSD menu, press the joystick button at the bottom of the monitor and then enter the [Settings].
- 2 Move the joystick up/down and left/right to set the options.
- 3 To return to the upper menu or set other menu items, move the joystick to ◀ or pressing (☺) it.
- 4 If you want to exit the OSD menu, move the joystick to ◀ until you exit.



[Game Mode]



[Game Adjust]



[Picture Adjust]



[Input]



[General]

## [Game Mode]

### [Settings] > [Game Mode]

#### [Game Mode] on SDR(Non-HDR)signal

- [Gamer 1]/[Gamer 2]: [Gamer 1] and [Gamer 2] picture modes allow you to save two sets of customized display settings, including game-related setup options.
- [FPS]: This mode is optimized for FPS games. It is suitable for very dark FPS games.
- [RTS]: This mode is optimized for RTS Game.
- [Vivid]: Optimized the screen for vivid colors.
- [Reader]: Optimizes the screen for reading documents. You can brighten the screen in the OSD menu.
- [HDR Effect]: Optimizes the screen for high dynamic range.

#### [Game Mode] on HDR signal

- [Gamer 1]/[Gamer 2]: [Gamer 1] and [Gamer 2] picture modes allow you to save two sets of customized display settings, including game-related setup options.
- [FPS]: This mode is optimized for FPS games. It is suitable for very dark FPS games.
- [RTS]: This mode is optimized for RTS Game.
- [Vivid]: Optimized the screen for vivid colors.

#### ! NOTE

- HDR content may not display correctly depending on Windows 10 OS settings, please check HDR on/off settings in Windows.
- When the HDR function is turned on, the characters or picture quality may be poor according to Graphic card performance.
- While the HDR function is on, screen flickering or cracking may occur when changing the monitor input or power on/off according to Graphic card performance.
- For information about whether the graphics card and game support HDR, visit their manufacture's website.

## [Game Adjust]

### [Settings] > [Game Adjust]

- [Motion Blur Reduction]
  - [On]: This mode minimizes motion blur in fast-moving videos. This function is available for the following vertical frequency.
    - » 120 Hz/ 144 Hz: HDMI
    - » 120 Hz/ 144 Hz/ 165 Hz: DisplayPort
  - [Off]: Turns [Motion Blur Reduction] Mode off.
- [Adaptive-Sync]/ [FreeSync Premium]: Provides seamless and natural images in a gaming environment. Note that the screen flickering may occur intermittently in a specific gaming environment.
  - [Extended]: Enable wider frequency range of [Adaptive-Sync]/ [FreeSync Premium] function than basic mode. The screen may flicker during the game play.
  - [Basic]: Enable basic frequency range of Adaptive-Sync/FreeSync Premium function.
  - [Off]: Adaptive-Sync/FreeSync Premium function off.
    - » Supported Interface: DisplayPort (Adaptive-Sync), HDMI (FreeSync Premium).
    - » Supported Graphic Card: A graphic card that supports NVIDIA's G-SYNC or AMD's FreeSync is necessary.
    - » Supported Version: Make sure to update the graphic card to the latest driver.
    - » For more information and requirement, refer to NVIDIA website ([www.nvidia.com](http://www.nvidia.com)) and AMD website ([www.amd.com](http://www.amd.com)).
- [Black Stabilizer]: You can control the black contrast to have better visibility in dark scenes. You can easily distinguish objects on dark game screens.
- [Response Time]: Sets a response time for displayed pictures based on the speed of the screen.
  - For a normal environment, it is recommended that you use [Fast].
  - For a fast-moving picture, it is recommended that you use [Faster].
  - Setting to [Faster] may cause image sticking.
    - [Faster]: Sets the response time to [Faster].
    - [Fast]: Sets the response time to [Fast].
    - [Normal]: Sets the response time to [Normal].
    - [Off]: Disables the feature.
- [Crosshair]: Crosshair provides a mark on the center of the screen for First Person Shooter (FPS) games. Users can select the crosshair that fits their gaming environment among four different crosshairs.
- [FPS Counter]
  - [On]: The indicator is displayed on the upper left of the screen. It will reflect the actual frame rate that is received at the input.
  - [Off]: Does not use the FPS Counter feature.
- [Game Reset]: Returns game to the default settings.

### ! NOTE

- [Motion Blur Reduction]
  - To reduce motion blur, brightness is reduced with backlight control.
  - [Motion Blur Reduction] and FreeSync feature can not be used at the same time.
  - This function is game-optimized.
  - It is recommended to turn off when you are not using the gaming function.
  - Flicker may occur during [Motion Blur Reduction] operation.
- [FPS Counter]
  - [FPS Counter] and [Crosshair] feature can not be used at the same time.

## [Picture Adjust]

### [Settings] > [Picture Adjust]

- [Brightness]: Adjusts the brightness of the screen.
  - [Contrast]: Adjusts the contrast of the screen.
  - [Sharpness]: Adjusts the sharpness of the screen.
  - [Gamma]
    - [Mode 1], [Mode 2], [Mode 3]: The higher the gamma value, the darker the image becomes. Likewise, the lower the gamma value, the lighter the image becomes.
    - [Mode 4]: If you do not need to adjust the gamma settings, select [Mode 4].
  - [Color Temp]: Set your own colour temperature.
    - [Custom]: The user can customize the red, green and blue colour.
    - [Warm]: Sets the screen colour to a reddish tone.
    - [Medium]: Sets the screen colour to between a red and blue tone.
    - [Cool]: Sets the screen colour to a bluish tone.
    - [Manual]: The user can fine-tune the colour temperature.
  - [R/G/B]: You can customize the picture colour using red, green, and blue colors.
  - [Six Color]: Meets the user requirements for colors by adjusting the hue and saturation of the six colors (red, green, blue, cyan, magenta, and yellow) and then saving the settings.
    - Hue: Adjusts the tone of the screen colors.
    - Saturation: Adjusts the saturation of the screen colors. The lower the value, the less saturated and brighter the colors become. The higher the value, the more saturated and darker the colors become.
  - [Black Level]: Sets the offset level (for HDMI only).
    - Offset: as a reference for a video signal, this is the darkest colour the monitor can display.
    - [High]: Keeps the current contrast ratio of the screen.
    - [Low]: Lowers the black levels and raises the white levels from the current contrast ratio of the screen.
  - [Variable Backlight]
    - Provides global dimming effects depending on game or video content.
    - [Off]: Disables the Variable Backlight feature.
    - [Normal]: Preferably for playing video content and internet or word-processing.
    - [Fast]: Preferably for console gaming experiences.
    - [Faster]: Preferably for PC gaming experiences.
  - [DFC]
    - [On]: Adjusts the brightness automatically according to the screen.
    - [Off]: Disables the DFC feature.
  - [Picture Reset]: Returns picture and colour to the default settings.
- ! NOTE**
- [Variable Backlight]
    - When these feature is enabled, a slight halo effect may be shown on dark backgrounds. This is normal and not a malfunction.
    - The function can only be used on HDR content.
    - It is recommended to turn off when you are not using the gaming function.

## [Input]

### [Settings] > [Input]

- [Input List]: Selects the input mode.
- [Aspect Ratio]: Adjusts the aspect ratio of the screen.
- [Auto Input Switch]: When [Auto Input Switch] is set to [On], display will automatically switch to new input when connected.

## [General]

### [Settings] > [General]

- [Language]: Sets the menu screen to the desired language.
- [User-defined Key 1]/ [User-defined Key 2]: You can customize the main menu to access your preferred menu easily. [User-defined Key 1] and [User-defined Key 2] appear at the left/right of the main menu.
- [SMART ENERGY SAVING]: Conserve energy by using luminance compensation algorithm.
  - [High]: Saves energy using the high-efficiency [SMART ENERGY SAVING] feature.
  - [Low]: Saves energy using the low-efficiency [SMART ENERGY SAVING] feature.
  - [Off]: Disables the feature.
  - The value of energy saving data may differ depending on panel and panel suppliers.
  - If you select the option of [SMART ENERGY SAVING] is [High] or [Low], monitor luminance become higher or lower depend on source.
- [Deep Sleep Mode]: When [Deep Sleep Mode] is enabled, power consumption is minimized while the monitor is in standby mode.
  - [On]: Enables [Deep Sleep Mode].
  - [Off]: Disables [Deep Sleep Mode].
- \* USB HUB functions will not work in standby mode while Deep sleep Mode is enabled in standby mode.
- [Power LED]: When the Power LED function is turned on, it operates as follows:
  - On Mode: Light up
  - Sleep Mode (Standby Mode): Blinking
  - Off Mode: Off

- [Automatic Standby]: If there is no operation on the monitor for a certain period of time, the monitor will automatically switch to standby mode.
- [HDMI Compatibility Mode]: [HDMI Compatibility Mode] feature can recognize the legacy equipment that does not support HDMI 2.0.
  - [On]: Enables [HDMI Compatibility Mode].
  - [Off]: Disables [HDMI Compatibility Mode].
- [DisplayPort Version]: Set DisplayPort Version to the same version as the connected external device. To use the HDR function, set to [1.4].
- [Buzzer]: This feature lets you set the sound generated from Buzzer when your monitor powers on.
- [OSD Lock]: This feature disables the configuration and adjustment of menus.  
All features are disabled except [Brightness], [Contrast] in [Picture Adjust], [Input], [OSD Lock] and [Information] in [General].
- [Information]: The following display information will be shown; [Total Power On Time], [Resolution].
- [Reset to Initial Settings]: Returns to the default settings.

**! NOTE**

- [HDMI Compatibility Mode]
  - If the connected device does not support [HDMI Compatibility Mode], the screen or sound may not work properly.
  - When HDMI Compatibility Mode is on, 2560 x 1440 @ 120/144 Hz resolution is not supported.
  - Some older graphics cards do not support HDMI 2.0, but you can select HDMI 2.0 resolution in the control panel of window.  
This may cause the screen to appear abnormally.

# TROUBLESHOOTING

## Nothing is displayed on the screen.

- Is the monitor's power cord plugged in?
  - Check if the power cord is correctly plugged into the power outlet.
- Is the monitor's adapter plugged in?
  - Make sure to use the adapter that is provided in the product package.
- Is the power LED on?
  - Check the power cable connection and press the power button.
- Is the power on and the power LED displaying red?
  - Check that the connected input is enabled ([Settings] > [Input]).
- Is the power LED blinking?
  - If the monitor is in sleep mode, move the mouse, or press any key on the keyboard, to switch the display on.
  - Check if the computer is turned on.
- Is the [The screen is not currently set to the recommended resolution.] message being displayed?
  - This occurs when signals transferred from the PC (graphics card) are out of the recommended horizontal or vertical frequency range of the monitor. Please see the PRODUCT SPECIFICATION section of this manual to set the appropriate frequency.

- Is the [No Signal] message being displayed?
  - This is displayed when the signal cable between the PC and the monitor is missing or disconnected. Check the cable and reconnect it.
- Is the [Out of Range] message being displayed?
  - This occurs when signals transferred from the PC (graphics card) are out of the horizontal or vertical frequency range of the monitor. Please see the Product Specification section of this manual to set the appropriate frequency.

## Do you see an "Unrecognized monitor, Plug and Play (VESA DDC) monitor found" message?

- Have you installed the display driver?
  - Be sure to install the display driver from our web site: <http://www.lg.com>.
  - Make sure to check if the graphics card supports Plug and Play function.

**The screen retains an image.**

- Does image sticking occur even when the monitor is turned off?
  - Displaying a still image for a prolonged time may cause damage to the screen, resulting in the retention of the image.
  - To extend the lifetime of the monitor, use a screensaver.

**Screen display is unstable and shaky. / Images displayed on the monitor leave shadow trails.**

- Did you select the appropriate resolution?
  - If the selected resolution is HDMI 1080i 60/50 Hz (interlaced), the screen may be flickering. Change the resolution to 1080p or the recommended resolution.

**The display colour is abnormal.**

- Does the display appear discolored (16 colors)?
  - Set the colour to 24 bit (true colour) or higher. In Windows, go to Control Panel > Display > Settings > Colour Quality. (The settings may differ depending on the operating system (OS) you use.)
- Does the display colour appear unstable or monochrome?
  - Check if the signal cable is connected properly. Reconnect the cable or reinsert the PC's graphics card.
- Are there spots on the screen?
  - When using the monitor, pixilated spots (red, green, blue, white, or black) may appear on the screen. This is normal for an LCD screen. It is not an error, nor is it related to the monitor's performance.

**Some features are disabled.**

- Are some functions not available when you press the Menu button?
  - The OSD is locked. Disable [OSD Lock] in [General].

**No sound from the headphone port.**

- Are images displayed using DisplayPort or HDMI input without sound?
  - Make sure that the headphone port connections are made properly.
  - Try increasing the volume with the joystick.
  - Set the audio output of the PC to the monitor you are using. On Microsoft Windows, go to Control Panel > Hardware and Sound > Sound > set the Monitor as default device. (The settings may differ depending on the operating system (OS) you use.)



# PRODUCT SPECIFICATION

Specifications are subject to change without notice.

The ~ symbol means alternating current, and the — symbol means direct current.

## Colour Depth:

- HDMI: 8-bit/ 10-bit/ 12-bit colour is supported.
- DisplayPort: 10-bit colour is supported.

## Resolution

- Max Resolution:
  - 2560 x 1440 @ 144 Hz (HDMI)
  - 2560 x 1440 @ 165 Hz (DisplayPort)
- Recommended Resolution:
  - 2560 x 1440 @ 144 Hz (HDMI)
  - 2560 x 1440 @ 165 Hz (DisplayPort)

## AC/DC Adapter

- Model: DA-65G19  
Manufacturer: Asian Power Devices Inc.
- Model: ADS-65AI-19-3 19065E/  
ADS-65FAI-19 19065EPG-1/  
ADS-65FAI-19 19065EPCU-1  
Manufacturer: SHENZHEN HONOR ELECTRONIC
- Model: MS-V3420R190-065LO-DE/  
MS-V3420R190-065LO-US  
Manufacturer: MOSO POWER SUPPLY TECHNOLOGY CO LTD
- Output: 19V — 3.42 A

## Environmental Conditions

- Operating Conditions
  - Temperature: 0 °C to 40 °C (32 °F to 104 °F)
  - Humidity: Less than 80 %
- Storing Conditions
  - Temperature: -20 °C to 60 °C (-4 °F to 140 °F)
  - Humidity: Less than 85 %

## Dimensions: Monitor Size (Width x Height x Depth)

- With Stand: 714.7 x 600.3 x 292.1 mm (28.1 x 23.6 x 11.5 inches)
- Without Stand: 714.7 x 428.0 x 50.9 mm (28.1 x 16.8 x 2.0 inches)

## Weight (Without Packaging)

- With Stand: 7.3 kg (16.0 lbs)
- Without Stand: 5.2 kg (11.4 lbs)

## Power Sources

- Power Rating: 19V — 3.0 A
- Power Consumption
  - Operating Mode: 50 W (Typical)\*
  - Sleep Mode (Standby Mode): ≤ 0.5 W\*\*
  - Off Mode: ≤ 0.3 W

\* The Operating Mode of Power Consumption is measured with LGE test standard. (Full White pattern, Maximum resolution)

\* The Power Consumption level can be different by operating condition and monitor setting.

\*\* The monitor goes to the sleep mode in a couple of minutes. (Max. 5 minutes)

## Supported Mode

(Preset Mode, HDMI/DisplayPort)

Resolution	Horizontal Frequency (kHz)	Vertical Frequency (Hz)	Polarity (H/V)	Remarks
640 x 480	31.469	59.94	-/-	
800 x 600	37.879	60.317	+/+	
1024 x 768	48.363	60	-/-	
1920 x 1080	66.587	59.934	+/-	
2560 x 1440	88.79	59.95	+/-	
2560 x 1440	111.86	74.97	+/-	HDMI [HDMI Compatibility Mode On]
2560 x 1440	150.92	99.95	+/-	DisplayPort only
2560 x 1440	183.00	120.00	+/-	
2560 x 1440	222.15	143.97	+/-	DisplayPort only
2560 x 1440	218.29	143.99	+/-	HDMI Recommended
2560 x 1440	257.17	164.96	+/-	DisplayPort Recommended

## HDMI Timing (Video)

Resolution	Horizontal Frequency (kHz)	Vertical Frequency (Hz)	Remarks
480P	31.5	60	
576P	31.25	50	
720P	37.5	50	
720P	45	60	
1080P	56.25	50	
1080P	67.5	60	
1080P	135	120	[HDMI Compatibility Mode]: [Off]
2160P	54	24	[HDMI Compatibility Mode]: [Off]
2160P	56.25	25	[HDMI Compatibility Mode]: [Off]
2160P	67.5	30	[HDMI Compatibility Mode]: [Off]
2160P	112.5	50	[HDMI Compatibility Mode]: [Off]
2160P	135	60	[HDMI Compatibility Mode]: [Off]

## Beep Guide

Menu	Location
Game Mode	1
Game Mode - Gamer1	1 1
Game Mode - Gamer2	1 2
Game Mode - FPS	1 3
Game Mode - RTS	1 4
Game Mode - Vivid	1 5
Game Mode - Reader	1 6
Game Mode - HDR Effect	1 7
Game Adjust	2
Game Adjust - Motion Blur Reduction	2 1
Game Adjust - Motion Blur Reduction	2 1
Game Adjust - Motion Blur Reduction - On	2 1 1
Game Adjust - Motion Blur Reduction - Off	2 1 2
Game Adjust - FreeSync Premium / Adaptive-Sync	2 3
Game Adjust - FreeSync Premium / Adaptive-Sync - Extended	2 3 1
Game Adjust - FreeSync Premium / Adaptive-Sync - Basic	2 3 2
Game Adjust - FreeSync Premium / Adaptive-Sync - Off	2 3 3
Game Adjust - Black Stabilizer	2 4
Game Adjust - Black Stabilizer	2 4 1 Slider
Game Adjust - Response Time	2 5

Menu	Location
Game Adjust - Response Time - Faster	2 5 1
Game Adjust - Response Time - Fast	2 5 2
Game Adjust - Response Time - Normal	2 5 3
Game Adjust - Response Time - Off	2 5 4
Game Adjust - Crosshair	2 6
Game Adjust - Crosshair - Red Cross	2 6 1
Game Adjust - Crosshair - Green Cross	2 6 2
Game Adjust - Crosshair - Red Dot	2 6 3
Game Adjust - Crosshair - Green Dot	2 6 4
Game Adjust - Crosshair - Off	2 6 5
Game Adjust - FPS Counter	2 7
Game Adjust - FPS Counter - On	2 7 1
Game Adjust - FPS Counter - Off	2 7 2
Game Adjust - Game Reset	2 8
Game Adjust - Game Reset - No	2 8 1
Game Adjust - Game Reset - Yes	2 8 2
Picture Adjust	3
Picture Adjust - Brightness	3 1
Picture Adjust - Brightness	3 1 1 Slider
Picture Adjust - Contrast	3 2
Picture Adjust - Contrast	3 2 1 Slider
Picture Adjust - Sharpness	3 3

Menu	Location
Picture Adjust - Sharpness	3 3 1 Slider
Picture Adjust - Gamma	3 4
Picture Adjust - Gamma - Mode 1	3 4 1
Picture Adjust - Gamma - Mode 2	3 4 2
Picture Adjust - Gamma - Mode 3	3 4 3
Picture Adjust - Gamma - Mode 4	3 4 4
Picture Adjust - Color Temp	3 5
Picture Adjust - Color Temp - Custom	3 5 1
Picture Adjust - Color Temp - Warm	3 5 2
Picture Adjust - Color Temp - Medium	3 5 3
Picture Adjust - Color Temp - Cool	3 5 4
Picture Adjust - Color Temp - Manual	3 5 5
Picture Adjust - Color Temp - Manual	3 5 5 1 Slider
Picture Adjust - R/G/B	3 6
Picture Adjust - R/G/B - Red	3 6 1 Slider
Picture Adjust - R/G/B - Green	3 6 2 Slider
Picture Adjust - R/G/B - Blue	3 6 3 Slider
Picture Adjust - Six Color	3 7
Picture Adjust - Six Color - Red Hue	3 7 1 Slider
Picture Adjust - Six Color - Red Saturation	3 7 2 Slider
Picture Adjust - Six Color - Green Hue	3 7 3 Slider
Picture Adjust - Six Color - Green Saturation	3 7 4 Slider

Menu	Location
Picture Adjust - Six Color - Blue Hue	3 7 5 Slider
Picture Adjust - Six Color - Blue Saturation	3 7 6 Slider
Picture Adjust - Six Color - Cyan Hue	3 7 7 Slider
Picture Adjust - Six Color - Cyan Saturation	3 7 8 Slider
Picture Adjust - Six Color - Magenta Hue	3 7 9 Slider
Picture Adjust - Six Color - Magenta Saturation	3 7 10 Slider
Picture Adjust - Six Color - Yellow Hue	3 7 11 Slider
Picture Adjust - Six Color - Yellow Saturation	3 7 12 Slider
Picture Adjust - Black Level	3 8
Picture Adjust - Black Level - High	3 8 1
Picture Adjust - Black Level - Low	3 8 2
Picture Adjust - Variable Backlight	3 9
Picture Adjust - Variable Backlight - Off	3 9 1
Picture Adjust - Variable Backlight - Normal	3 9 2
Picture Adjust - Variable Backlight - Fast	3 9 3
Picture Adjust - Variable Backlight - Faster	3 9 4
Picture Adjust - DFC	3 10
Picture Adjust - DFC - On	3 10 1
Picture Adjust - DFC - Off	3 10 2
Picture Adjust - Picture Reset	3 11
Picture Adjust - Picture Reset - No	3 11 1
Picture Adjust - Picture Reset - Yes	3 11 2
Input	4

Menu	Location
Input - Input List	4 1
Input - Input List - HDMI 1	4 1 1
Input - Input List - HDMI 2	4 1 2
Input - Input List - DisplayPort	4 1 3
Input - Aspect Ratio	4 2
Input - Aspect Ratio - 16 : 9	4 2 1
Input - Aspect Ratio - 4 : 3	4 2 2
Input - Auto Input Switch	4 3
Input - Auto Input Switch - On	4 3 1
Input - Auto Input Switch - Off	4 3 2
General	5
General - Language	5 1
General - Language - English	5 1 1
General - Language - German	5 1 2
General - Language - French	5 1 3
General - Language - Spanish	5 1 4
General - Language - Italian	5 1 5
General - Language - Swedish	5 1 6
General - Language - Finnish	5 1 7
General - Language - Portuguese	5 1 8
General - Language - Portuguese (Brazil)	5 1 9
General - Language - Polish	5 1 10
General - Language - Russian	5 1 11

Menu	Location
General - Language - Greek	5 1 12
General - Language - Ukrainian	5 1 13
General - Language - Chinese	5 1 14
General - Language - Traditional Chinese	5 1 15
General - Language - Japanese	5 1 16
General - Language - Korean	5 1 17
General - User-defined Key 1	5 2
General - User-defined Key 1 - Input	5 2 1
General - User-defined Key 1 - Game Mode	5 2 2
General - User-defined Key 1 - Crosshair	5 2 3
General - User-defined Key 1 - Black Stabilizer	5 2 4
General - User-defined Key 1 - Response Time	5 2 5
General - User-defined Key 1 - FPS Counter	5 2 6
General - User-defined Key 2	5 3
General - User-defined Key 2 - Input	5 3 1
General - User-defined Key 2 - Game Mode	5 3 2
General - User-defined Key 2 - Crosshair	5 3 3
General - User-defined Key 2 - Black Stabilizer	5 3 4
General - User-defined Key 2 - Response Time	5 3 5
General - User-defined Key 2 - FPS Counter	5 3 6
General - SMART ENERGY SAVING	5 4
General - SMART ENERGY SAVING - High	5 4 1
General - SMART ENERGY SAVING - Low	5 4 2

Menu	Location
General - SMART ENERGY SAVING - Off	5 4 3
General - Deep Sleep Mode	5 5
General - Deep Sleep Mode - On	5 5 1
General - Deep Sleep Mode - Off	5 5 2
General - Power LED	5 6
General - Power LED - On	5 6 1
General - Power LED - Off	5 6 2
General - Automatic Standby	5 7
General - Automatic Standby - 8H	5 7 1
General - Automatic Standby - 6H	5 7 2
General - Automatic Standby - 4H	5 7 3
General - Automatic Standby - Off	5 7 4
General - HDMI Compatibility Mode	5 8
General - HDMI Compatibility Mode - On	5 8 1
General - HDMI Compatibility Mode - Off	5 8 2
General - DisplayPort Version	5 9
General - DisplayPort Version - 1.4	5 9 1
General - DisplayPort Version - 1.2	5 9 2
General - Buzzer	5 10
General - Buzzer - On	5 10 1
General - Buzzer - Off	5 10 2
General - OSD Lock	5 11
General - OSD Lock - On	5 11 1

Menu	Location
General - OSD Lock - Off	5 11 2
General - Information	5 12
General - Reset to Initial Settings	5 13
General - Reset to Initial Settings - No	5 13 1
General - Reset to Initial Settings - Yes	5 13 2



The model and serial number of the product are located on the back and on one side of the product.

Record them below in case you ever need service.

Model \_\_\_\_\_

Serial No. \_\_\_\_\_

Supplier's Declaration of Conformity

Trade Name	LG
Responsible Party	LG Electronics USA, Inc.
Address	111 Sylvan Avenue, North Building, Englewood Cliffs, NJ 07632
E-mail	lg.environmental@lge.com