

◀◀ [Go to contents page](#)

## 5.2 Disassembly Procedures:

**S1** Open the carton with a proper tool.



Take out all accessories including DP cable, USB cable, power cable, VGA cable, user's manual, QSG, cable cover and cable sleeve and other packing materials from the carton. (Note: It depends on whether users returning the accessories)

**S2**



**S3**

Take out the base, Paper-Top and stand from the carton, then take out the monitor from the pizza carton.



**S4**

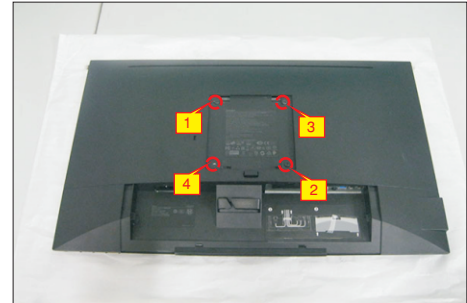
Take out the monitor from EPE-bag and put the LCD monitor on a protective cushion.



**S5**

Use a Philips-head screwdriver to remove four screws for unlocking mechanisms.

(No.1~4 screw size=M4x10,  
Torque=12±0.5kgfxcm)



**S6**

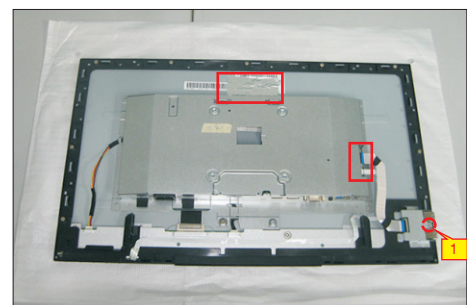
Use one hand to press the rear cover, then wedge your fingers between the rear cover and the middle bezel on the corners of the top left side to the right side of the monitor to release the rear cover.



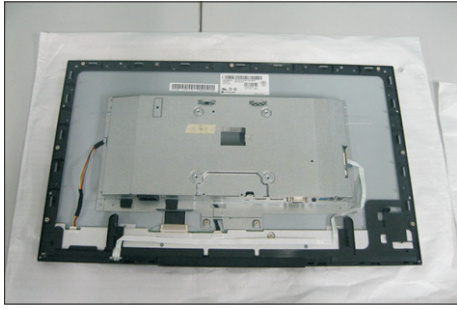
**S7**

Remove the rear cover. Tear off the aluminum foil, and then disconnect the USB cable and Function key cable away from the connector of the interface board. Use a Philips-head screwdriver to remove one screw for unlocking the USB unit, remove the USB unit from the hooks.

(No.1 screw size=M3x5, Torque=4±0.5kgfxcm)



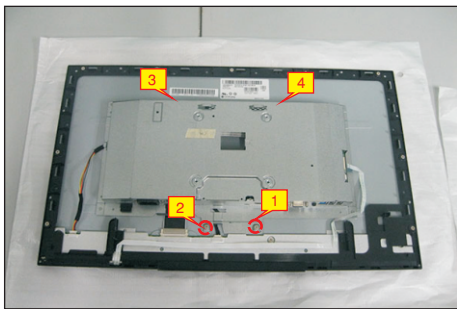
◀◀ Go to contents page



S8

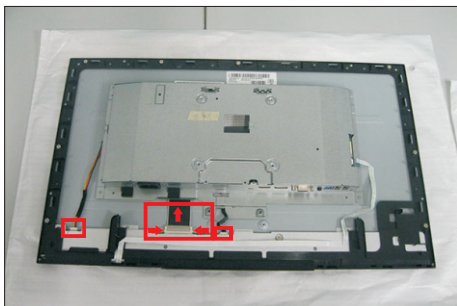
Use a Philips-head screwdriver to remove four screws for unlocking the bracket chassis module with the panel module.

(No.1~4 Screw size= M3x4, Torque=5±0.5kgfxcM)



S9

Disconnect the panel power cable to the connector of the panel module. Then disconnect the other cables as the below picture shown.



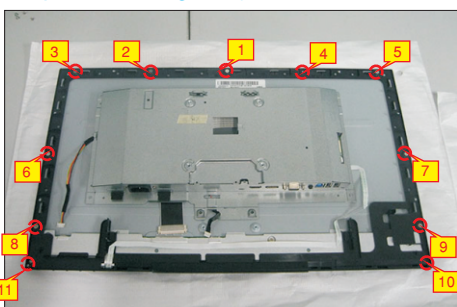
S10

Use a Philips-head screwdriver to remove nine screws for unlocking the middle bezel with the assembled unit. Use a Philips-head screwdriver to remove two screws for unlocking the front bezel. Put the bracket chassis module on the protector.

(No.1~9 screw size=M3x4, Torque=5±0.5kgfxcM)

(No.10~11 screw size=M1.6x3.1,

Torque=0.7±0.2kgfxcM)



S11

Tear off the adhesive tapes to release the function key cable. Remove the middle bezel and front bezel then put them on a protector.



S12

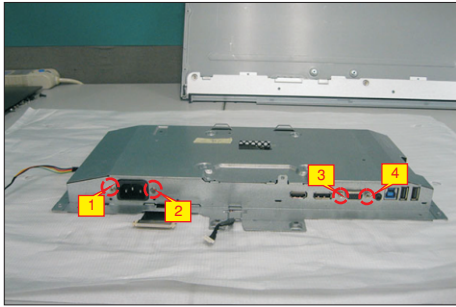
Use a Philips-head screwdriver to remove two screws for unlocking the AC-power outlet connector. And Use a Hex-head screwdriver to remove two screws for unlocking mechanisms of the VGA connectors.

(No.1~2 screw size=M3x10, Torque=6±0.5kgfxcM)

(No.3~4 screw size=M3x8, Torque=6±0.5kgfxcM)



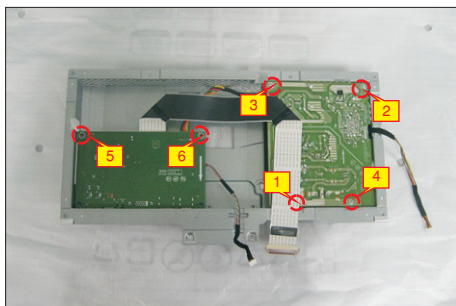
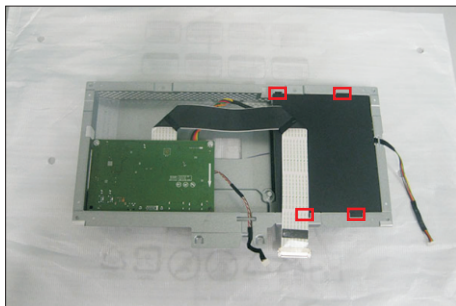
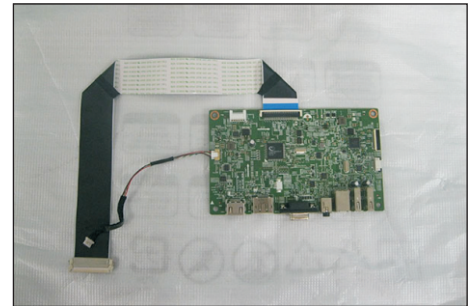
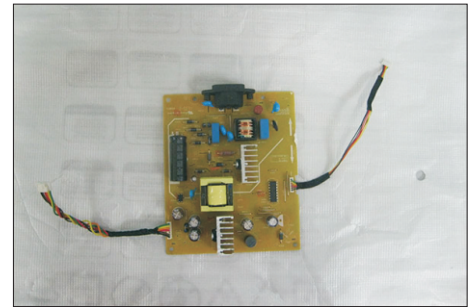
◀◀ [Go to contents page](#)



S13

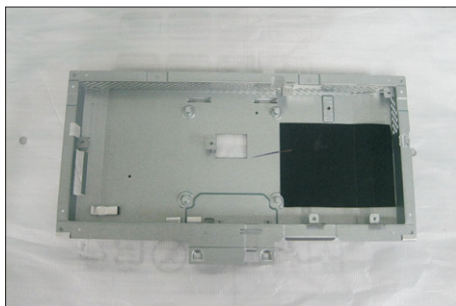
Turn over the bracket chassis module. Remove the Mylar from the hooks of the bracket, and then use a Philips-head screwdriver to remove six screws for unlocking the interface board and power board.

(No.1 screw size=M4x8, Torque=6±0.5kgfxcm;  
No.2~6 screw size=M3x7.5, Torque=6±0.5kgfxcm)



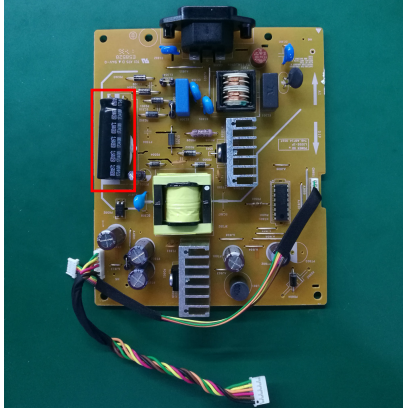
S14

Remove the interface and power boards from the bracket chassis module carefully, and then disconnect all of the cables.

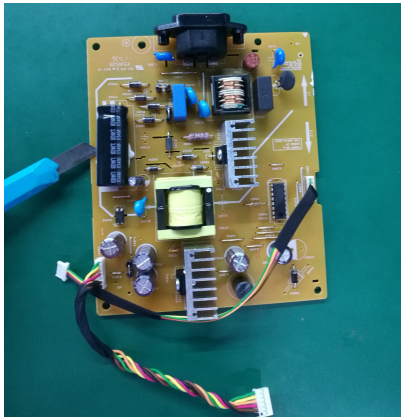


◀◀ [Go to contents page](#)

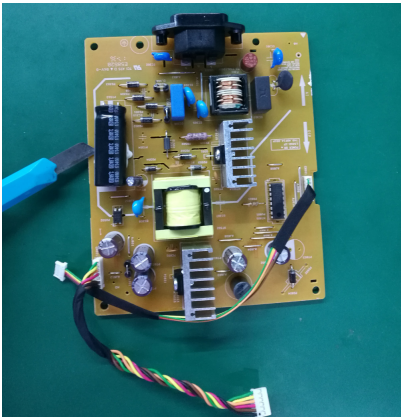
**S15** Remove electrolyte capacitors (red mark) from printed circuit boards



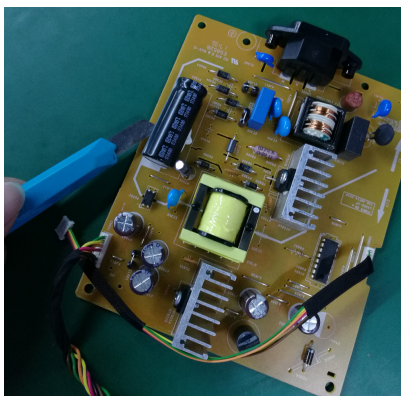
S15-1 Cut the glue between bulk cap. and PCB with a knife



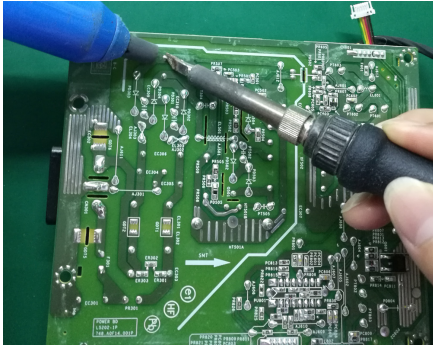
S15-2 Ensure cutting path within the glue, don't touch bulk cap. or PCB



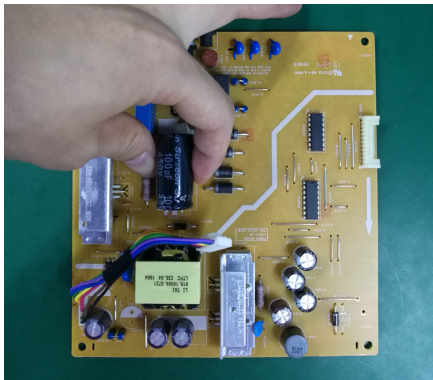
S15-3 Cut into the bottom of bulk cap. and pull it up carefully



S15-4 Take out bulk cap. pin solder with soldering iron and absorber



S15-5 Lift the bulk cap. up and away from the PCB



[Go to contents page](#)

## 2. Product material information

The following substances, preparations, or components should be disposed of or recovered separately from other WEEE in compliance with Article 4 of EU Council Directive 75/442/EEC.

Capacitors / condensers (containing PCB/PCT)	No used
Mercury containing components	No used
Batteries	No used
Printed circuit boards (with a surface greater than 10 square cm)	Product has printed circuit boards (with a surface greater than 10 square cm)
Component contain toner, ink and liquids	No used
Plastic containing BFR	No used
Component and waste contain asbestos	No used
CRT	No used
Component contain CFC, HCFC, HFC and HC	No used
Gas discharge lamps	No used
LCD display > 100 cm <sup>2</sup>	Product has an LCD greater than 100 cm <sup>2</sup>
External electric cable	Product has external cables
Component contain refractory ceramic fibers	No used
Component contain radio-active substances	No used
Electrolyte capacitors (height > 25mm, diameter > 25mm)	Product has electrolyte capacitors (height > 25mm, diameter > 25mm)

## 3. Tools Required

List the type and size of the tools that would typically can be used to disassemble the product to a point where components and materials requiring selective treatment can be removed.

Tool Description:

- Screwdriver (Phillip head) #1
- Screwdriver (Phillip head) #2
- Penknife
- Soldering iron and absorber