



# LCD Monitor Quick Start Guide

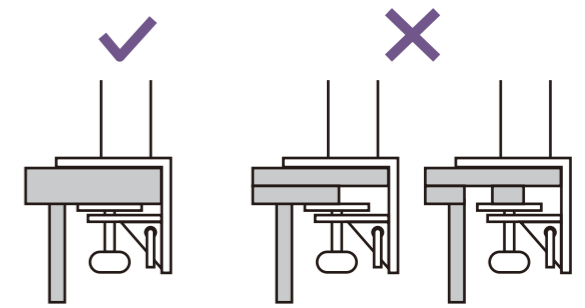
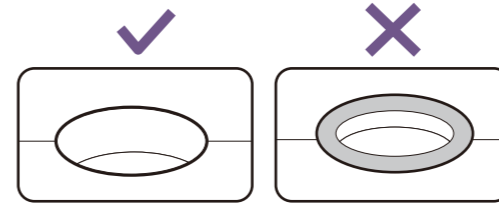
DesignVue Designer Monitor | PD Series



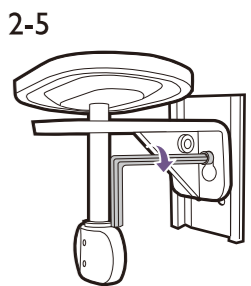
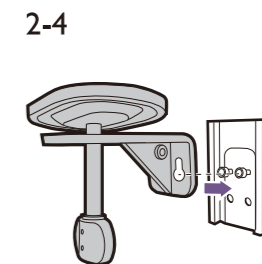
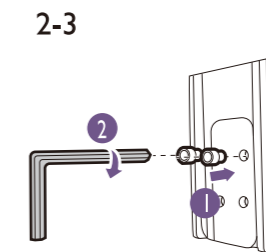
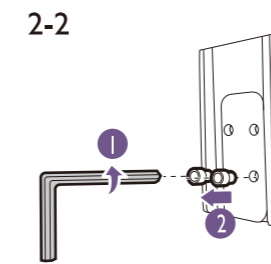
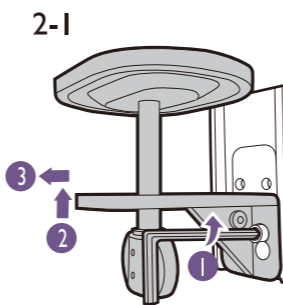
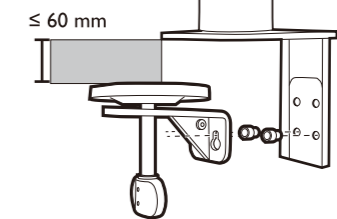
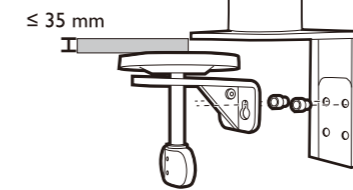
DN: PD05UA-EQ-V1

© 2022 BenQ Corporation. All rights reserved. Rights of modification reserved.

## 1 Check mounting environment



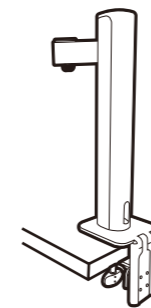
## 2 Check desk thickness



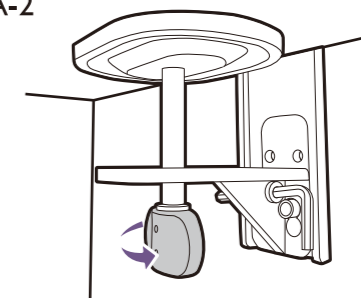
## 3 Stand installation

### A Clamp mounting

3A-1

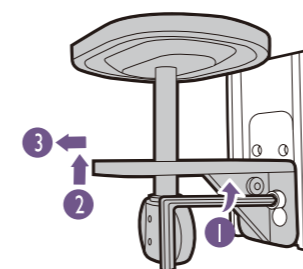


3A-2

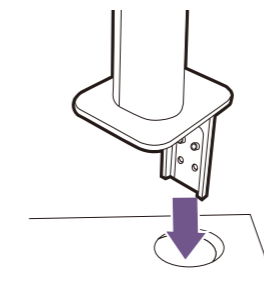


### B Grommet mounting

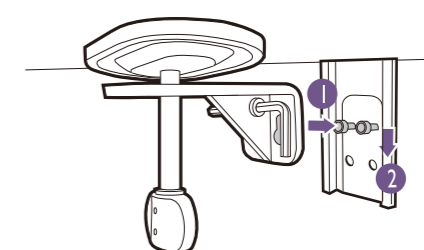
3B-1



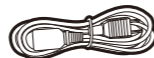
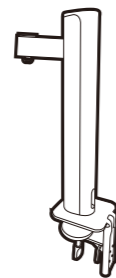
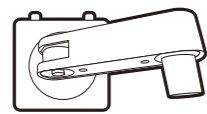
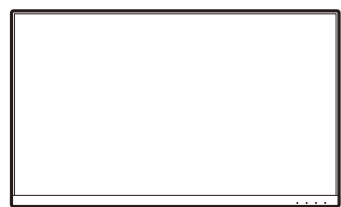
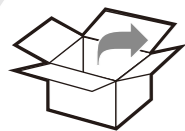
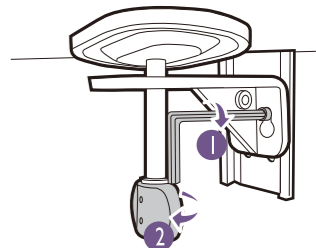
3B-2



3B-3



3B-4



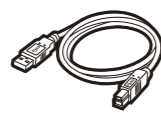
Hotkey Puck G2



HDMI



DP



USB



USB-C™



Quick Start Guide

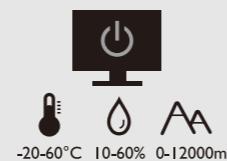
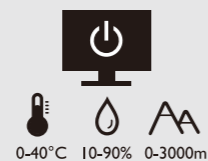


Regulatory Statements



Safety Instructions

The terms HDMI, HDMI High-Definition Multimedia Interface, HDMI Trade Dress and the HDMI Logos are trademarks or registered trademarks of HDMI Licensing Administrator, Inc.



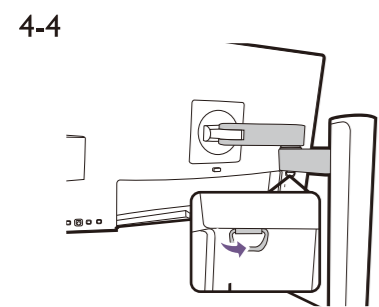
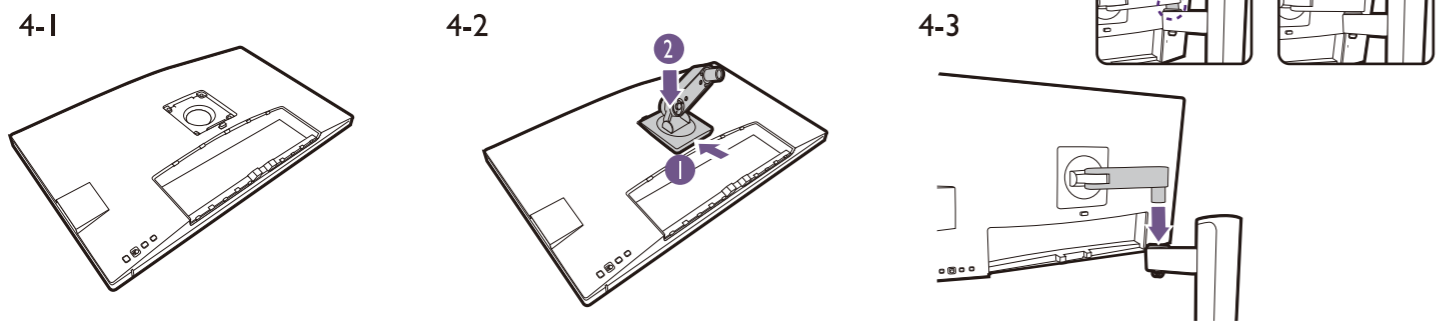
HIGH-DEFINITION MULTIMEDIA INTERFACE

(For models with HDMI inputs)

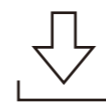
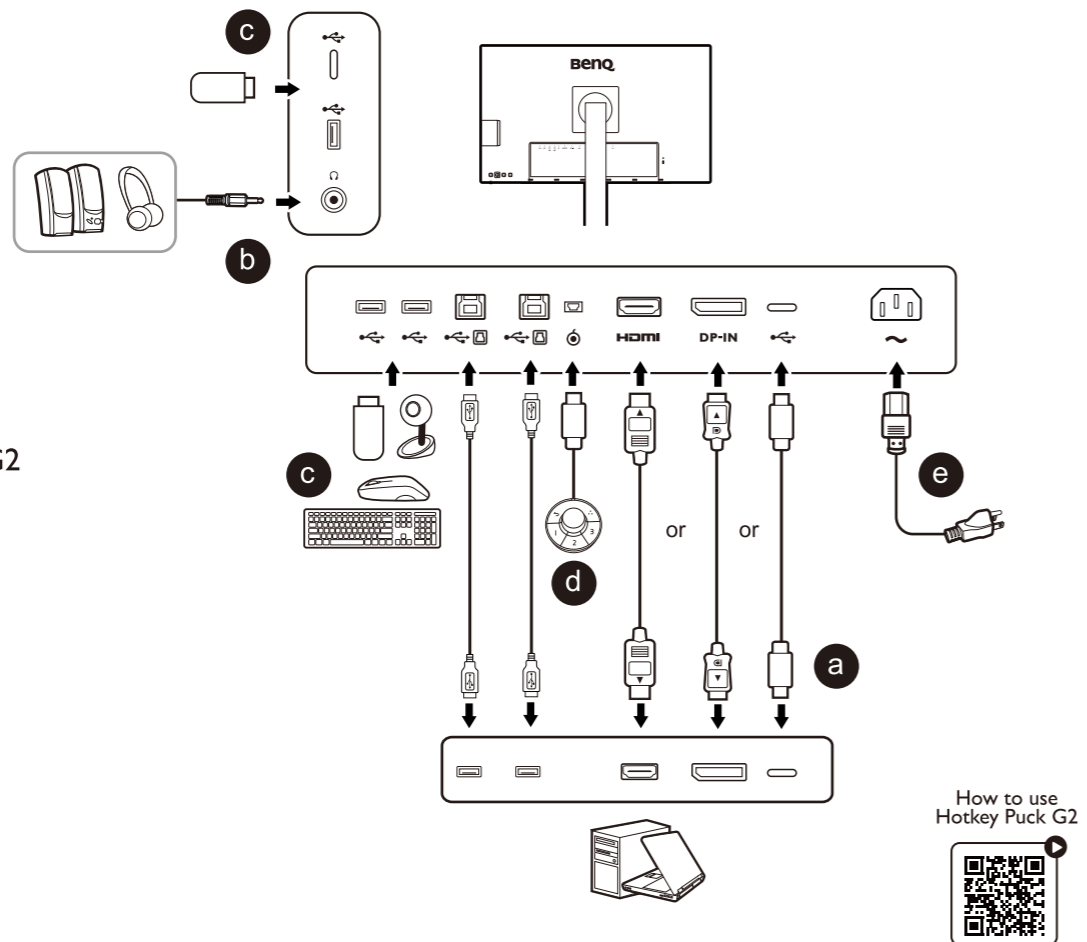
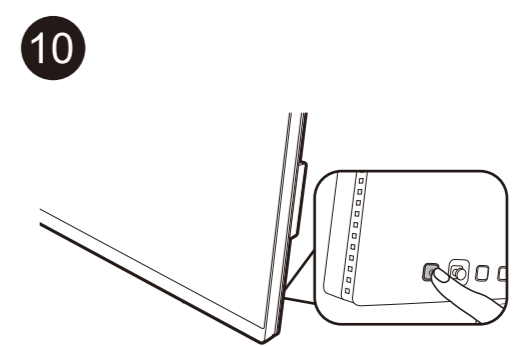
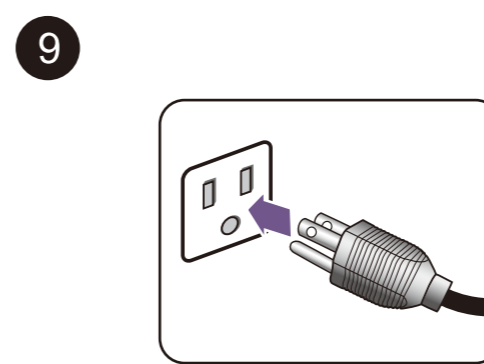
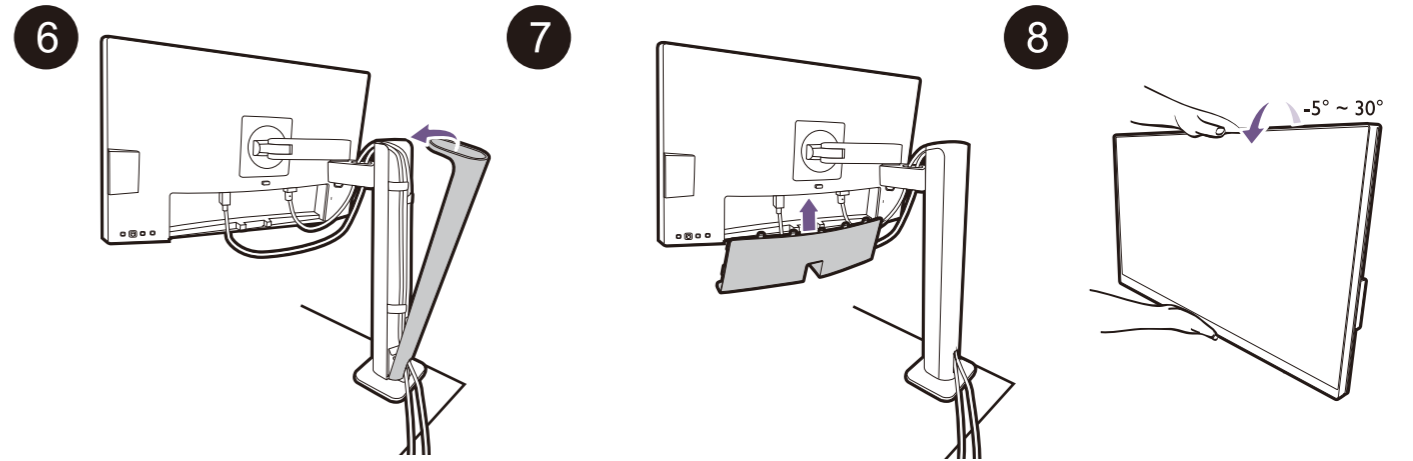
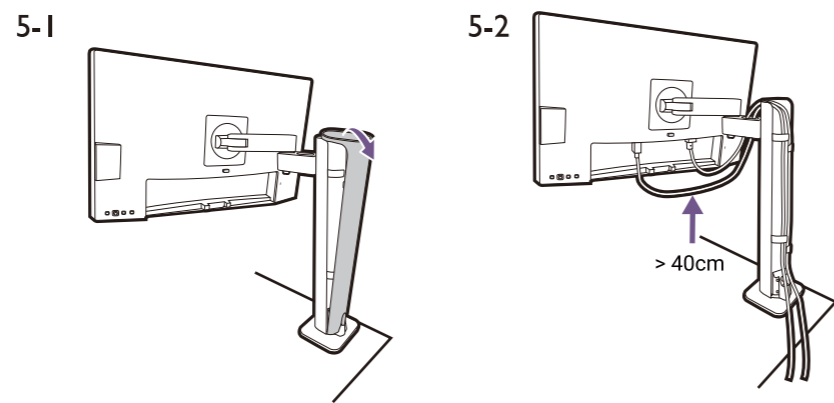


P/N: 4J.XXXXX.XXX

## 4 Mounting the monitor head

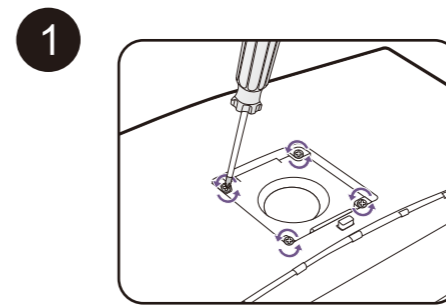
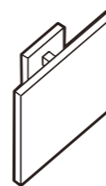
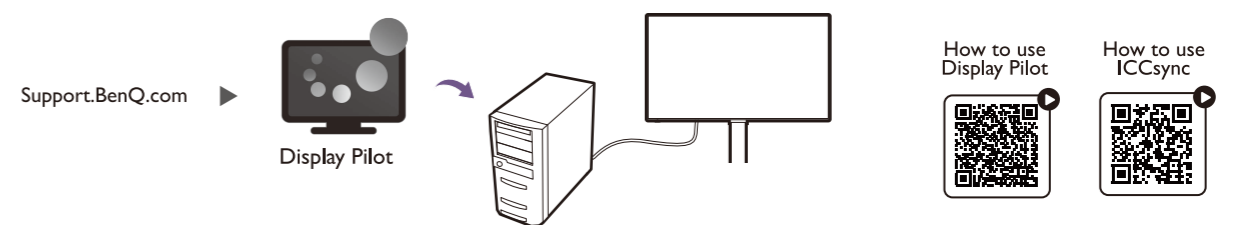


## 5 Connect and organize cables

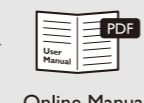
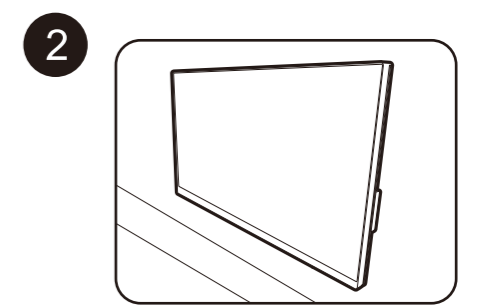


## Software installation

Display Pilot: for display arrangement & color matching (ICCsyntax)



M4 x 10 mm



Online Manual



Product Support



Software Download

For professional color display



CAD / CAM Mode



Animation Mode

For work efficiency



KVM Switch