



## Philips

LCD monitor, LED backlight with PowerSensor

- P-line
- 24" / 61 cm
- Full HD AMVA display

241P4QPYEB/27

# Sustainable eco design display

with PowerSensor saves energy bills

The Philips PowerSensor AMVA LED display using 65% post consumer recycled plastics and PVC, BFR free housing is ideal for eco-friendly productivity

## Benefits

### Sustainable Eco-design

- PowerSensor saves up to 80% energy costs
- 65% post consumer recycled plastics with TCO Edge
- PVC-BFR free housing
- Zero power consumption with 0 watt hard switch

### Brilliant performance

- AMVA LED for wide-view super-high contrast, vivid images
- DisplayPort offers audio and video over a single, long cable
- Built-in stereo speakers for multimedia

### Designed for people

- SmartErgoBase enables people-friendly ergonomic adjustments
- Low bezel-to-table height for maximum reading comfort

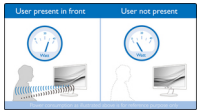
### Easy to experience

- USB Hub with 4 ports for easy connections
- SmartImage presets for easy optimized image settings

# PHILIPS

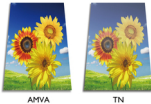
## Features

### PowerSensor



PowerSensor is a built-in 'people sensor' that transmits and receives harmless infrared signals to determine if user is present and automatically reduces monitor brightness when user steps away from the desk, cutting energy costs by up to 80 percent and prolonging monitor life

### AMVA LED display

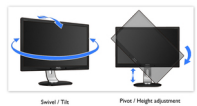


Philips AMVA LED display uses an advanced multi-domain vertical alignment technology which gives you super-high static contrast ratios for extra vivid and bright images. While standard office applications are handled with ease, it is especially suitable for photos, web-browsing, movies, gaming, and demanding graphical applications. It's optimized pixel management technology gives you 178/178 degree extra wide viewing angle, resulting in crisp images even in 90 degree pivot mode

### DisplayPort

DisplayPort is a digital link from PC to Monitor without any conversion. With higher capabilities than DVI standard, it is fully capable to support up to 15meter cables and 10.8 Gbps/sec data transfer. With this high performance and zero latency, you get the fastest imaging and refresh rates - making DisplayPort the best choice for not only general office or home use, but also for the demanding gaming and movies, video editing and more. It also keeps interoperability in mind via use of various adapters.

### SmartErgoBase



The SmartErgoBase is a monitor base that delivers ergonomic display comfort and provides cable management. The base's people-friendly height, swivel, tilt and rotation angle adjustments position the monitor for maximum comfort that can ease the physical strains of a long workday; cable management reduces cable clutter and keeps the workspace neat and professional.

### 4 Ports USB 2.0 HUB

USB Hub allows user to conveniently connect their plug and play multimedia devices such as USB memory devices, camera, portable HDD, Web camera, PDA, Printer and many other devices which has USB connection available. The conveniently located USB 2.0 Hub on the monitor allows USB 2.0 signals to pass thru to the computer. Note that many devices like cameras and HDD

may need to be powered On independently, as they have higher power requirements than the monitor USB Hub can provide.

### Low bezel-to-table height



The Philips monitor, thanks to its advanced SmartErgoBase, can be lowered down almost to desk level for a comfortable viewing angle. Low bezel-to-table height is the perfect solution if you use bifocals, trifocals or progressive lens glasses for your computing work. Additionally, it allows for users with greatly different heights to use the monitor in their preferred angle and height settings, helping them reduce fatigue and strain.

### SmartImage



SmartImage is an exclusive leading edge Philips technology that analyzes the content displayed on your screen and gives you optimized display performance. This user friendly interface allows you to select various modes like Office, Photo, Movie, Game, Economy etc., to fit the application in use. Based on the selection, SmartImage dynamically optimizes the contrast, color saturation and sharpness of images and videos for ultimate display performance. The Economy mode option offers you major power savings. All in real time with the press of a single button!

### TCO Edge

TCO Edge certification is given to products which go beyond existing eco-labeling programs. Over and above standard TCO requirements, it further mandates that the product uses minimum 65% of post consumer recycled plastics, is energy efficient, uses minimal hazardous materials, has 100% recyclable packaging, and is designed for easy recycling amongst other requirements. You can rest assured that this Philips monitor is a cutting edge technology product which is best in class ICT, benefitting you and the planet while helping you make a responsible green IT purchase!

### Built-in stereo speakers

A pair of high quality stereo speakers built into a display device. It can be visible front firing, or invisible down firing, top firing, rear firing, etc depending on model and design.

### PVC-BFR free housing

This Philips monitor housing is free from brominated flame retardant and polyvinyl chloride (PVC-BFR free)

### Zero power consumption

At the flick of the 0 watt hard switch which is conveniently located at the back, you can completely cut-off your monitor from AC power. This results in zero power consumption reducing your carbon footprint even further

## Specifications

Please note that this is a pre-sales leaflet. The contents of this leaflet reflect the best of our knowledge per date and country mentioned above. The contents of this leaflet are subject to change without notice. Philips does not accept any liability as to the contents of this leaflet.

### Picture/Display

LCD panel type	AMVA LCD
Backlight type	W-LED system
Panel Size	24 inch / 61 cm
Effective viewing area	531.4 (H) x 298.9 (V)
Aspect ratio	16:9
Optimum resolution	1920 x 1080 @ 60Hz

Response time (typical)	12 ms
SmartResponse (typical)	4 ms (Gray to Gray)*
Brightness	250 cd/m <sup>2</sup>
Contrast ratio (typical)	3,000:1
SmartContrast	20,000,000 :1

Pixel pitch	0.276 x 0.276 mm
Viewing angle	178° (H) / 178° (V) @ C/R > 10
Picture enhancement	SmartImage
Display colors	16.7 M
Scanning Frequency	30 - 83 kHz (H) / 56 - 75 Hz (V)
sRGB	Yes

#### Connectivity

Signal Input	DisplayPort DVI-D (digital, HDCP) VGA (Analog)
USB	USB 2.0 x 4
Sync Input	Separate Sync Sync on Green
Audio (In/Out)	PC audio-in Headphone out

#### Convenience

Built-in Speakers	1.5Wx2
User convenience	SmartImage Volume PowerSensor Menu Power On/Off
Control software	SmartControl Premium
OSD Languages	Brazil Portuguese Czech Dutch English Finnish French German Greek Hungarian Italian Japanese Korean Polish Portuguese Russian Simplified Chinese Spanish Swedish Traditional Chinese Turkish Ukrainian
Other convenience	Kensington lock VESA mount (100x100mm)
Plug & Play Compatibility	DDC/CI Mac OS X sRGB Windows 8/7/Vista

#### Stand

Height adjustment	130 mm
Pivot	90 degree
Swivel	-65/+65 degree
Tilt	-5/20 degree

#### Power

ECO mode	15 W (typ.)
On mode	21.3 W (typ.) (EnergyStar 6.0 test method)
Standby mode	0.1W
Off mode	Zero watts with Zero switch
Power LED indicator	Operation - White Standby mode- White (blinking)
Power supply	Built-in 100-240VAC, 50-60Hz

#### Dimensions

Product with stand(max height)	565 x 521 x 220 mm
--------------------------------	--------------------

Product with stand(max height)	22.2 x 20.5 x 8.7 inch
Product without stand (mm)	565 x 353 x 61 mm
Product without stand in inch	22.2 x 13.9 x 2.4 inch
Packaging in mm (WxHxD)	626 x 422 x 273 mm
Packaging in inch (WxHxD)	24.6 x 16.6 x 10.7 inch

#### Weight

Product with stand (kg)	5.30 kg
Product with stand (lb)	11.66 lb
Product without stand (kg)	3.10 kg
Product without stand (lb)	6.82 lb
Product with packaging (kg)	7.93 kg
Product with packaging (lb)	17.45 lb

#### Operating conditions

Temperature range (operation)	0°C to 40°C °C
Temperature range (storage)	-20°C to 60°C °C
Relative humidity	20%-80 %
Altitude	Operation: +12,000ft (3,658m), Non-operation: +40,000ft (12,192m)
MTBF	30,000 hour(s)

#### Sustainability

Environmental and energy	PowerSensor EnergyStar 6.0 EPEAT Gold* TCO edge RoHS
Recyclable packaging material	100 %
Post consumer recycled plastic	65%
Specific Substances	PVC / BFR free housing Mercury free Lead free

#### Compliance and standards

Regulatory Approvals	BSMI CE Mark cETLus FCC Class B GOST SASO SEMKO TCO 6.0 TUV Ergo TUV/GS WEEE
----------------------	--

#### Cabinet

Front bezel	Black
Rear cover	Black
Foot	Black
Finish	Texture

\* EPEAT Gold is valid only where Philips registers the product. Please visit [www.epeat.net](http://www.epeat.net) for registration status in your country.  
\* Smart response time is the optimum value from either GtG or GtG (BW) tests.



data subject to change  
2014, May 8

Version: 5.0.4  
UPC: 609585219229

© 2014 Koninklijke Philips Electronics N.V.  
All rights reserved.

Specifications are subject to change without notice. Trademarks are the property of Koninklijke Philips Electronics N.V. or their respective owners.

[www.philips.com](http://www.philips.com)