



Philips

AMVA LCD monitor, LED backlight with Webcam

- P-line
- 24"/61 cm
- Full HD display

241P4QPYKES/00

Sustainable eco design display

with Webcam saves time and money

The Philips AMVA LED display with Webcam helps you collaborate and communicate, saving you time and money.

Benefits

Sustainable Eco-design

- PowerSensor saves up to 80% energy costs
- 65% post consumer recycled plastics with TCO Edge
- PVC-BFR free housing
- Zero power consumption with 0 watt hard switch

Brilliant performance

- AMVA LED for wide-view super-high contrast, vivid images
- Webcam to connect and collaborate
- DisplayPort offers audio and video over a single, long cable

- USB Hub with 3 ports for easy connections
- Built-in stereo speakers for multimedia
- Built-in microphone for audio conferencing

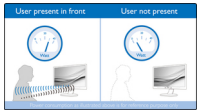
Designed for people

- SmartErgoBase enables user-friendly ergonomic adjustments
- Low bezel-to-table height for maximum reading comfort

PHILIPS

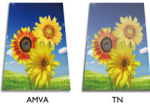
Features

PowerSensor



PowerSensor is a built-in 'people sensor' that transmits and receives harmless infrared signals to determine if the user is present and then automatically reduces monitor brightness when the user steps away from the desk, cutting energy costs by up to 80 percent and prolonging monitor life

AMVA LED display



Philips AMVA LED display uses an advanced multi-domain vertical alignment technology which gives you super-high static contrast ratios for extra vivid and bright images. While standard office applications are handled with ease, it is especially suitable for photos, web-browsing, films, gaming and demanding graphical applications. Its optimised pixel management technology gives you 178/178 degree extra wide viewing angle, resulting in crisp images even in 90 degree pivot mode

Webcam

Embedded webcam and microphone enables you to view and communicate with your colleagues and clients. This simple solution allows you to collaborate and share, saving precious time and travel-related costs.

DisplayPort

DisplayPort is a digital link from PC to monitor without any conversion. With higher capabilities than DVI standard, it is fully capable to support up to 15 metre cables and 10.8 Gbps/sec data transfer. With this high performance and zero latency, you get the fastest imaging and refresh rates — making DisplayPort the best choice for not only general office or home use, but also for the more demanding gaming and films, video editing and more. It also keeps interoperability in mind via the use of various adapters.

SmartErgoBase



The SmartErgoBase is a monitor base that delivers ergonomic display comfort and provides cable management. The user-friendly height, swivel, tilt and rotation angle adjustments of the base allow the monitor to be positioned for maximum comfort to help ease the physical strains of a long workday. In

addition, cable management reduces cable clutter and keeps the workspace neat and professional.

3 Ports USB 2.0 HUB

USB Hub allows user to conveniently connect their plug and play multimedia devices such as USB memory devices, camera, portable HDD, Web camera, PDA, Printer and many other devices which have USB connection available. The conveniently located USB 2.0 Hub on the monitor allows USB 2.0 signals to pass through to the computer. Note that many devices like cameras and HDD may need to be powered On independently, as they have higher power requirements than the monitor USB Hub can provide.

Built-in stereo speakers

A pair of high-quality stereo speakers built into a display device. They may be visible front firing, or invisible down firing, top firing, rear firing etc. depending on model and design.

Low bezel-to-table height



Thanks to its advanced SmartErgoBase, the Philips monitor can be lowered down almost to desk level for a comfortable viewing angle. Low bezel-to-table height is the perfect solution if you use bifocals, trifocals or progressive lens glasses for your computing work. Additionally, it allows users of different heights to use the monitor at their preferred angle and height settings, helping them to reduce fatigue and strain.

TCO Edge

TCO Edge certification is given to products that go beyond existing eco-labelling programmes. Over and above standard TCO requirements, it further mandates that the product uses a minimum of 65% post-consumer recycled plastics, is energy efficient, uses minimal hazardous materials, has 100% recyclable packaging and, amongst other requirements, is designed for easy recycling. You can rest assured that this Philips monitor is a cutting edge technology product, which is best in class ICT, benefitting you and the planet while helping you make a responsible green IT purchase!

PVC-BFR free housing

This Philips monitor housing is free from brominated flame retardant and polyvinyl chloride (PVC-BFR free)

Zero power consumption

At the flick of the 0 watt hard switch, which is conveniently located at the back of the monitor, you can completely cut off your monitor from AC power. This results in zero power consumption, reducing your carbon footprint even further

Specifications

Please note that this is a pre-sales leaflet. The contents of this leaflet reflect the best of our knowledge per date and country mentioned above. The contents of this leaflet are subject to change without notice. Philips does not accept any liability as to the contents of this leaflet.

Picture/Display

LCD panel type	AMVA LCD
Backlight type	W-LED system
Panel Size	24 inch/61 cm
Effective viewing area	531.4 (H) x 298.9 (V)
Aspect ratio	16:9
Optimum resolution	1920 x 1080 @ 60 Hz
Response time (typical)	12 ms
SmartResponse (typical)	4 ms (Grey to Grey)*
Brightness	250 cd/m ²
Contrast ratio	5000:1

SmartContrast	20,000,000:1
Pixel pitch	0.276 x 0.276 mm
Viewing angle	178° (H)/178° (V) @ C/R > 10
Picture enhancement	SmartImage
Display colours	16.7 M
Scanning Frequency	30–83 kHz (H)/56–75 Hz (V)
sRGB	Yes

Connectivity

Signal Input	DisplayPort DVI-D (digital), HDCP VGA (Analogue)
--------------	--

USB Sync Input	USB 2.0 x 3 Separate Sync Sync on Green
Audio (In/Out)	PC audio-in Microphone Headphone out

Convenience

Built-in Speakers	1.5 W x 2
Built-in webcam	2.0 megapixel camera with microphone and LED indicator
User convenience	SmartImage Volume PowerSensor Menu Power On/Off
Control software OSD Languages	SmartControl Premium Brazil Portuguese Czech Dutch English Finnish French German Greek Hungarian Italian Japanese Korean Polish Portuguese Russian Simplified Chinese Spanish Swedish Traditional Chinese Turkish Ukrainian
Other convenience	Kensington lock VESA mount (100 x 100 mm)
Plug and Play Compatibility	DDC/CI Mac OS X sRGB Windows 8/7/Vista

Stand

Height adjustment	130 mm
Pivot	90 degree
Swivel	-65/+65 degree
Tilt	-5/20 degree

Power

ECO mode	15 W (typ.)
On mode	21.6 W (typ.) (EnergyStar 6.0 test method)
Standby mode	0.1 W
Off mode	Zero watts with Zero switch
Power LED indicator	Operation - White Standby mode - White (flashing)
Power supply	Built-in 100-240 VAC, 50-60 Hz

Dimensions

Product with stand (max height)	565 x 521 x 220 mm
Product without stand (mm)	565 x 353 x 61 mm
Packaging in mm (W x H x D)	626 x 422 x 273 mm

Weight

Product with stand (kg)	5.30 kg
Product without stand (kg)	3.10 kg
Product with packaging (kg)	7.93 kg

Operating conditions

Temperature range (operation)	0°C to 40°C °C
Temperature range (storage)	-20°C to 60°C °C
Relative humidity	20–80% %
Altitude	Operation: +12,000 ft (3658 m), Non-operation: +40,000 ft (12,192 m)
MTBF	30,000 hour(s)

Sustainability

Environmental and energy	EnergyStar 6.0 PowerSensor EPEAT Gold* TCO edge RoHS
Recyclable packaging material	100 %
Post-consumer recycled plastic	65%
Specific Substances	PVC/BFR free housing Mercury free Lead free

Compliance and standards

Regulatory Approvals	BSMI CE Mark cETLus FCC Class B GOST SASO SEMKO TCO 6.0 TUV Ergo TUV/GS WEEE
----------------------	--

Cabinet

Front bezel	Silver
Rear cover	Black
Foot	Black
Finish	Texture

* EPEAT Gold is valid only where Philips registers the product. Please visit www.epeat.net for registration status in your country.

* Smart response time is the optimum value from either GtG or GtG (BW) tests.



data subject to change
2014, November 17

Version: 5.0.2
EAN: 8712581636043

© 2014 Koninklijke Philips Electronics N.V.
All rights reserved.

Specifications are subject to change without notice. Trademarks are the property of Koninklijke Philips Electronics N.V. or their respective owners.

www.philips.com