



Philips

LCD monitor with Webcam, MultiView

- Quad HD
- 27" (68.6 cm)
- 2560 x 1440 display

272P4QPJKEB/27

Crystalclear images, maximum productivity

with MultiView

This professional Philips PLS display delivers Crystalclear Quad HD 2560x1440 images. MultiView enhances productivity with active dual connect and view. Webcam enables collaboration saving time and money

Benefits

Brilliant performance

- PLS Quad HD technology ensures 8 bit color, 109 ppi images
- Crystalclear images with Quad HD 2560x1440 pixels
- Webcam with mic to connect and collaborate
- MultiView enables active dual connect and view at same time
- Display Port for daisy chain multi-display usage
- SmartConnect with HDMI, Display port and Dual link DVI
- USB 3.0 enables fast data transfers and smart phone charging
- Built-in stereo speakers for multimedia

Features

PLS Quad HD

This professional Philips display uses latest PLS Quad HD panel giving you ultra high-res brilliant wide angle images with 2560x1440 pixel resolution.

Sustainable Eco-design

- PowerSensor saves up to 80% energy costs
- 65% post consumer recycled plastics with TCO Edge

Designed for people

- SmartErgoBase enables people-friendly ergonomic adjustments
- Low bezel-to-table height for maximum reading comfort

With excellent 8 bit color depth combined with 109 ppi density, you can now enjoy professional true color sRGB images compared to limited 6 bit color depth displays with 82ppi density. Its higher brightness and lower power

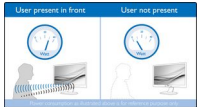
PHILIPS

consumption relative to conventional wide view angle displays ensure you always have brilliant performance, while saving energy too. It's best suited for professional applications like CAD, Graphics design, Image rendering etc

Crystalclear images

These latest Philips screens deliver Crystalclear, Quad HD 2560x1440 or 2560x1080 pixel images. Utilizing high performance panels with high density pixel count, enabled by high bandwidth sources like Displayport, HDMI, Dual link DVI, these new displays will make your images and graphics come alive. Whether you are demanding professional requiring extremely detailed information for CAD-CAM solutions, using 3D graphic applications or a financial wizard working on huge spreadsheets, Philips displays will give you Crystalclear images.

PowerSensor



PowerSensor is a built-in 'people sensor' that transmits and receives harmless infrared signals to determine if user is present and automatically reduces monitor brightness when user steps away from the desk, cutting energy costs by up to 80 percent and prolonging monitor life

Webcam

Embedded webcam and microphone enables you to view and communicate with your colleagues and clients. This simple solution allows you to collaborate and share, saving precious time and travel related costs.

MultiView technology

With the ultra high resolution Philips MultiView display you can now experience a world of connectivity in a comfortable way whether at office or at home. MultiView enables active dual connect and view so that you can work with multiple devices like PC and Notebook side-by-side simultaneously, making complex multi-tasking work a breeze. Watching live football feed from your set-top box on right side, while browsing the Internet from your notebook on the left is now easy. You may want to keep an eye on the live news feed with audio in the small window, while working on your latest blog.

Display Port with Daisy Chain

This Philips display employs Display port 1.2a Multi Stream Transport (MST) technology with HBR2, which doubles the data throughput to 21.6 Gbps. This enables it to daisy chain multiple monitors, thereby increasing your efficiency dramatically. This daisy chain, multi-monitor capability makes this Philips display especially suitable for use in Finance, Banking, control room and other similar environment. To make use of this feature, your PC Graphics Card must be certified to DP1.2 with MST option. For detailed information, please visit <http://www.displayport.org/>

SmartConnect

With a plethora of connectivity, these Philips displays come equipped with multi connections like Dual link DVI, Display Port, universal HDMI connector,

enabling you to enjoy high resolution uncompressed video and audio content. USB 3.0 option ensures that you can have super speed data transfers while having global connectivity. Regardless of what source you use, you can rest assured that this Philips display will ensure your investment is not made obsolete any time soon!

SmartErgoBase



The SmartErgoBase is a monitor base that delivers ergonomic display comfort and provides cable management. The base's people-friendly height, swivel, tilt and rotation angle adjustments position the monitor for maximum comfort that can ease the physical strains of a long workday; cable management reduces cable clutter and keeps the workspace neat and professional.

USB 3.0 super speed

Super Speed USB 3.0 deploys 5.0 gbit/s transfer rate, which is about 10 times faster than USB 2.0 standard significantly reducing data transfer time saving you time and money. With more bandwidth, super speed transfer rates, better power management and superior overall performance, USB 3.0 sets the latest global standard allowing you to use the large capacity storage devices. Sync-N-Go technology ensures you don't have to wait anymore for bandwidth to be freed up. Your investment in USB 2.0 devices is protected as it is backward compatible.

Built-in stereo speakers

A pair of high quality stereo speakers built into a display device. It can be visible front firing, or invisible down firing, top firing, rear firing, etc depending on model and design.

Low bezel-to-table height



The Philips monitor, thanks to its advanced SmartErgoBase, can be lowered down almost to desk level for a comfortable viewing angle. Low bezel-to-table height is the perfect solution if you use bifocals, trifocals or progressive lens glasses for your computing work. Additionally, it allows for users with greatly different heights to use the monitor in their preferred angle and height settings, helping them reduce fatigue and strain.

TCO Edge

TCO Edge certification is given to products which go beyond existing eco-labeling programs. Over and above standard TCO requirements, it further mandates that the product uses minimum 65% of post consumer recycled plastics, is energy efficient, uses minimal hazardous materials, has 100% recyclable packaging, and is designed for easy recycling amongst other requirements. You can rest assured that this Philips monitor is a cutting edge technology product which is best in class ICT, benefitting you and the planet while helping you make a responsible green IT purchase!

Specifications

Please note that this is a pre-sales leaflet. The contents of this leaflet reflect the best of our knowledge per date and country mentioned above. The contents of this leaflet are subject to change without notice. Philips does not accept any liability as to the contents of this leaflet.

Picture/Display

LCD panel type	PLS LCD
Backlight type	W-LED system
Panel Size	27 inch / 68.6 cm
Effective viewing area	596.74 (H) x 335.66 (V)
Aspect ratio	16:9
Optimum resolution	2560 x 1440 @ 60Hz
Response time (typical)	12 ms
SmartResponse (typical)	6 ms (Gray to Gray)
Brightness	300 cd/m ²

Contrast ratio (typical)	1000:1
SmartContrast	20,000,000 :1
Pixel pitch	0.233 x 0.233 mm
Viewing angle	178° (H) / 178° (V) @ C/R > 10
Picture enhancement	SmartImage
Display colors	16.7 M (True 8 bit)
Scanning Frequency	30 - 90 kHz (H) / 56 - 75 Hz (V)
sRGB	Yes

Connectivity

USB	USB 3.0 x 3
Signal Input	DVI-Dual Link (digital, HDCP) DisplayPort HDMIx2
Sync Input	Separate Sync Sync on Green
Audio (In/Out)	PC audio-in Headphone out

Convenience

Built-in Speakers	2Wx2
Built-in webcam	2.0 megapixel camera with microphone and LED indicator
MultiView	PIP/PBP mode 2x devices
User convenience	SmartImage Menu Multiview Power On/Off User
Control software	SmartControl Premium
OSD Languages	Brazil Portuguese Czech Dutch English Finnish French German Greek Hungarian Italian Japanese Polish Portuguese Russian Simplified Chinese Spanish Swedish Traditional Chinese Turkish Ukrainian
Other convenience	Kensington lock VESA mount (100x100mm)
Plug & Play Compatibility	DDC/CI Mac OS X sRGB Windows 8/7/XP

Stand

Height adjustment	150 mm
Pivot	90 degree
Swivel	-65/65 degree
Tilt	-5/20 degree

Power

ECO mode	23 W (typ.)
On mode	39.2 W (typ.) (EnergyStar 6.0 test method)
Standby mode	0.3W (typ.)
Off mode	Zero watts with Zero switch
Power LED indicator	Operation - White Standby mode- White (blinking)
Power supply	100-240VAC, 50-60Hz Built-in

Dimensions

Product with stand(max height)	639 x 580 x 242 mm
--------------------------------	--------------------

Product with stand(max height)	25.2 x 22.8 x 9.5 inch
Product without stand (mm)	639 x 405 x 64 mm
Product without stand in inch	25.2 x 15.9 x 2.5 inch
Packaging in mm (WxHxD)	750 x 234 x 490 mm
Packaging in inch (WxHxD)	29.5 x 9.2 x 19.3 inch

Weight

Product with stand (kg)	8.5 kg
Product with stand (lb)	18.7 lb
Product without stand (kg)	5.7 kg
Product without stand (lb)	12.54 lb
Product with packaging (kg)	11.35 kg
Product with packaging (lb)	24.97 lb

Operating conditions

Temperature range (operation)	0°C to 40°C °C
Temperature range (storage)	-20°C to 60°C °C
Relative humidity	20%-80 %
Altitude	Operation: +12,000ft (3,658m), Non-operation: +40,000ft (12,192m)
MTBF	30,000 hour(s)

Sustainability

Environmental and energy	EPEAT Gold* PowerSensor EnergyStar 6.0 RoHS TCO edge
Recyclable packaging material	100 %
Post consumer recycled plastic	65%
Specific Substances	PVC / BFR free housing Mercury free Lead free

Compliance and standards

Regulatory Approvals	BSMI CE Mark FCC Class B GOST SASO SEMKO TCO 6.0 TUV Ergo TUV/GS UL/cUL WEEE
----------------------	--

Cabinet

Front bezel	Black
Rear cover	Black
Foot	Black
Finish	Texture

* EPEAT Gold is valid only where Philips registers the product. Please visit www.epeat.net for registration status in your country.



data subject to change
2015, December 28

Version: 5.1.1
UPC: 609585230064

© 2015 Koninklijke Philips Electronics N.V.
All rights reserved.

Specifications are subject to change without notice. Trademarks are the property of Koninklijke Philips Electronics N.V. or their respective owners.

www.philips.com