



Philips Brilliance
LCD monitor with Clinical
D-image

Clinical review display
24.1" / 61 cm
1920 x 1200 (2 MP)

Brilliance



C240P4QPYEW

Clinical Review Display with Brilliant Images

This Philips display is ideal for everyday clinical care environment. D-image preset gives you consistent DICOM grayscale medical images. Its medical grade power supply ensures basic safety. Anti-microbial housing inhibits bacterial growth.

Clinical Review

- Clinical D-image preset for DICOM part 14 Grayscale images
- SmartImage Clinic for common display settings
- AntiMicrobial housing actively inhibits bacterial growth
- Medical grade power supply ensures safety with low emission
- Design complements clinical environment

Brilliant performance

- IPS LED wide view technology for image and color accuracy
- PowerSensor saves up to 80% energy costs
- Built-in stereo speakers for multimedia
- DisplayPort offers audio and video over a single, long cable
- USB Hub with 4 ports for easy connections

Designed for people

- SmartErgoBase enables people-friendly ergonomic adjustments
- Low bezel-to-table height for maximum reading comfort

PHILIPS

Highlights

Clinical D-image

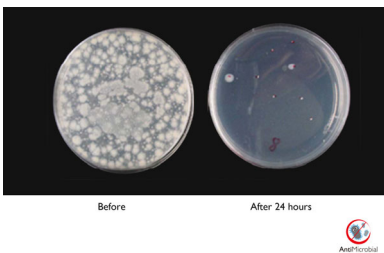


Monitors must show medical images consistently with high quality to achieve reliable interpretations. The rendering of medical Grayscale images on standard monitors is mostly inconsistent at best, making them unsuitable for usage in a clinical environment. Philips clinical review displays with clinical D-image preset are factory calibrated to give DICOM part 14 compatible Grayscale standard display performance. By using high quality LCD panels with LED technology, Philips offers you consistent and reliable performance at an affordable price point. Further info on <http://medical.nema.org/>

SmartImage Clinic

SmartImage is an exclusive, leading edge Philips technology that analyzes the content displayed on your screen, and based on different applications/images displayed on a monitor, SmartImage optimizes display content by dynamically adjusting brightness, contrast, color and sharpness in real time.

AntiMicrobial housing



Germs have become a growing problem in hospitals and clinical environments worldwide as

they can cause life-threatening infections. Philips clinical review displays take care of this challenge by using JIS Z2801 compliant antimicrobial additive in its housing material making it an integral part of the display housing. Your well being along with your patients is now assured by this protective shield that impedes the growth of most common microorganisms such as "Staphylococcus aureus (Gastroenteritis)", "Escherichia coli (E Coli)" and "Klebsiella (Pneumonia)", for example.

Medical grade power supply

Basic safety, essential performance and reliability are essential requirements in a professional clinical environment. Unlike standard displays, Philips clinical review displays employ special medical grade power supplies in order to meet these requirements. It complies with EN/IEC 60601-1 standard ensuring basic safety and essential performance. Additionally it also complies with EN/IEC 60601-1-2 collateral standard for medical grade electromagnetic tests and compatibility. Many countries, hospitals and clinics mandate compliance to these standards as a requirement.

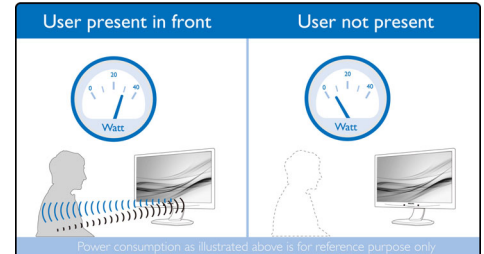
IPS technology



IPS displays use an advanced technology which gives you extra wide viewing angles of 178/178 degree, making it possible to view the display from almost any angle - even in 90 degree Pivot mode! Unlike standard TN panels, IPS displays gives you remarkably crisp images with vivid colors, making it ideal not only for Photos, movies and web browsing, but also for

professional applications which demand color accuracy and consistent brightness at all times.

PowerSensor



PowerSensor is a built-in 'people sensor' that transmits and receives harmless infrared signals to determine if user is present and automatically reduces monitor brightness when user steps away from the desk, cutting energy costs by up to 80 percent and prolonging monitor life

DisplayPort

DisplayPort is a digital link from PC to Monitor without any conversion. With higher capabilities than DVI standard, it is fully capable to support up to 15meter cables and 10.8 Gbps/sec data transfer. With this high performance and zero latency, you get the fastest imaging and refresh rates - making DisplayPort the best choice for not only general office or home use, but also for the demanding gaming and movies, video editing and more. It also keeps interoperability in mind via use of various adapters.

Specifications

Picture/Display

- LCD panel type: IPS LCD
- Backlight type: W-LED system
- Panel Size: 24.1 inch / 61 cm
- Effective viewing area: 518.4 (H) x 324 (V)
- Aspect ratio: 16:10
- Optimum resolution: 1920 x 1200 @ 60Hz
- Response time (typical): 14 ms
- Brightness: 300 cd/m²
- Contrast ratio (typical): 1,000:1
- Pixel pitch: 0.270 x 0.270 mm
- Viewing angle: 178° (H) / 178° (V), @ C/R > 10
- Display colors: 16.7 M
- Scanning Frequency: 24 - 94 kHz (H) / 48 - 85 Hz (V)
- sRGB
- Picture enhancement: SmartImage Clinic
- DICOM: Clinical D-image, DICOM part-14
- DICOM calibrated brightness: 210 cd/m²

Connectivity

- Signal Input: DisplayPort 1.2, DVI-D (digital, HDCP), VGA (Analog)
- USB: USB 2.0 x 4
- Sync Input: Separate Sync, Sync on Green
- Audio (In/Out): PC audio-in, Headphone out
- Built-in speakers: 2Wx2

Convenience

- User convenience: SmartImage Clinic, PowerSensor, Menu, Power On/Off, 4:3 / Wide
- Control software: SmartControl Premium
- OSD Languages: English, French, German, Italian, Portuguese, Russian, Simplified Chinese, Spanish
- Other convenience: Kensington lock, VESA mount (100x100mm)
- Plug & Play Compatibility: DDC/CI, Mac OS X, sRGB, Windows 8/7/Vista

Stand

- Height adjustment: 130 mm
- Pivot: 90 degree
- Swivel: -65/65 degree
- Tilt: -5/20 degree

Power

- On mode: 17.4 W (typ.) (EnergyStar 6.0 test method)
- Standby mode: 0.4 W (typ.)
- Off mode: Zero watts with Zero switch
- Power LED indicator: Operation - White, Standby mode- White (blinking)
- External power supply: 100-240VAC, 50-60Hz

(Medical cert.: IEC60601-1 / EN60601-1)

Dimensions

- Product with stand(max height): 555 x 550 x 244 mm
- Product with stand(max height): 21.9 x 21.7 x 9.6 inch
- Product without stand (mm): 555 x 388 x 65 mm
- Product without stand in inch: 21.9 x 15.3 x 2.6 inch
- Packaging in mm (WxHxD): 632 x 457 x 286 mm
- Packaging in inch (WxHxD): 24.9 x 18.0 x 11.3 inch

Weight

- Product with stand (kg): 6.97 kg
- Product with stand (lb): 15.33 lb
- Product without stand (kg): 4.64 kg
- Product without stand (lb): 10.21 lb
- Product with packaging (kg): 9.80 kg
- Product with packaging (lb): 21.56 lb

Operating conditions

- Temperature range (operation): 0°C to 40°C °C
- Temperature range (storage): -20°C to 60°C °C
- Relative humidity: 20%-80 %
- Altitude: Operation: +12,000ft (3,658m), Non-operation: +40,000ft (12,192m)
- MTBF: 30,000 hour(s)

Anti-Microbial

- Anti-microbial housing
- JISZ2801Anti-microbial housing

Sustainability

- Environmental and energy: EnergyStar 6.0, EPEAT Gold*, PowerSensor, RoHS
- Recyclable packaging material: 100 %
- Specific Substances: PVC / BFR free housing, Mercury free, Lead free

Compliance and standards

- EMC: IEC/EN60601-1-2, CE Mark
- Safety: IEC/EN60601-1, CE Mark, GOST
- Ergonomic/Others: JIS Z2801, Energy Star, TUV/GS, TUV Ergo, TCO 6.0, ISO 13485 certified, WEEE

Cabinet

- Front bezel: White
- Rear cover: White
- Foot: White
- Finish: Texture



Issue date 2015-12-01

Version: 3.0.1

12 NC: 8670 001 07254
UPC: 6 09585 23670 7

© 2015 Koninklijke Philips N.V.
All Rights reserved.

Specifications are subject to change without notice.
Trademarks are the property of Koninklijke Philips N.V.
or their respective owners.

www.philips.com

* Please note: This display is not certified to be used in patient vicinity.
Any use for primary diagnostics is the sole responsibility of the hospital
or clinic operator only.

* DICOM is the registered trademark of the NEMA for its standards
publications relating to digital communications of medical information.

* EPEAT Gold is valid only where Philips registers the product. Please
visit www.epeat.net for registration status in your country.

* "IPS" word mark / trademark and related patents on technologies
belong to their respective owners.