



## Philips

LCD monitor, LED backlight with PowerSensor

- S Line
- 27" (68.6 cm)
- Full HD display

271S4LPYEB/27

# Sustainable eco design display

with PowerSensor saves energy bills

The Philips PowerSensor LED display using 25% recycled materials and PVC, BFR free housing is ideal for eco-friendly productivity

## Benefits

### Sustainable Eco-design

- PowerSensor saves up to 80% energy costs
- 25% recycled material with EPEAT Gold
- PVC-BFR free housing

### Great performance

- LED technology ensures natural colors
- DisplayPort delivers high bandwidth for ultra fine images
- SmartContrast gives enhanced rich black details

### Designed for people

- SmartErgoBase enables people-friendly ergonomic adjustments
- Low bezel-to-table height for maximum reading comfort

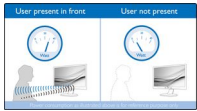
### Easy to experience

- SmartImage presets for easy optimized image settings
- SmartControl for easy performance tuning

# PHILIPS

## Features

### PowerSensor



PowerSensor is a built-in 'people sensor' that transmits and receives harmless infrared signals to determine if user is present and automatically reduces monitor brightness when user steps away from the desk, cutting energy costs by up to 80 percent and prolonging monitor life

### EPEAT Gold

Philips EPEAT GOLD certified monitors ensure protection for human health and environment, and are highly energy efficient ensuring low emissions of climate changing green house gases. EPEAT program helps purchasers evaluate, compare and select Monitors based on 51 environmental criteria supported by US EPA. GOLD certification ensures that at least 30% of plastic used is Post Consumer Resin, which ensures reduction in use of toxic and hazardous materials. EPEAT Gold is valid only where Philips registers the product. Please visit [www.epeat.net](http://www.epeat.net) for registration status in your country.

### PVC-BFR free housing

This Philips monitor housing is free from brominated flame retardant and polyvinyl chloride (PVC-BFR free)

### LED technology

White LED's are solid state devices which light up to full, consistent brightness faster saving startup time. LED's are free from mercury content which allows for eco-friendly recycling and disposal process. LED's allow for better dimming control of LCD backlight, resulting in super high contrast ratio. It also gives superior color reproduction thanks to consistent brightness across the screen.

### DisplayPort

DisplayPort is a digital link from PC to Monitor without any conversion. With higher capabilities than DVI standard, it is fully capable to support up to 15meter cables and 10.8 Gbps/sec data transfer. With this high performance and zero latency, you get the fastest imaging and refresh rates - making DisplayPort the best choice for not only general office or home use, but also for the demanding gaming and movies, video editing and more. It also keeps interoperability in mind via use of various adapters.

### SmartContrast



SmartContrast is a Philips technology that analyzes the contents you are displaying, automatically adjusting colors and controlling backlight intensity to

dynamically enhance contrast for the best digital images and videos or when playing games where dark hues are displayed. When Economy mode is selected, contrast is adjusted and backlighting fine-tuned for just-right display of everyday office applications and lower power consumption.

### SmartErgoBase



The SmartErgoBase is a monitor base that delivers ergonomic display comfort and provides cable management. The base's people-friendly height, swivel, tilt and rotation angle adjustments position the monitor for maximum comfort that can ease the physical strains of a long workday; cable management reduces cable clutter and keeps the workspace neat and professional.

### Low bezel-to-table height



The Philips monitor, thanks to its advanced SmartErgoBase, can be lowered down almost to desk level for a comfortable viewing angle. Low bezel-to-table height is the perfect solution if you use bifocals, trifocals or progressive lens glasses for your computing work. Additionally, it allows for users with greatly different heights to use the monitor in their preferred angle and height settings, helping them reduce fatigue and strain.

### SmartImage



SmartImage is an exclusive leading edge Philips technology that analyzes the content displayed on your screen and gives you optimized display performance. This user friendly interface allows you to select various modes like Office, Photo, Movie, Game, Economy etc., to fit the application in use. Based on the selection, SmartImage dynamically optimizes the contrast, color saturation and sharpness of images and videos for ultimate display performance. The Economy mode option offers you major power savings. All in real time with the press of a single button!

### SmartControl for easy tuning

PC software for fine tuning display performance and settings. Philips offers users two choices for display setting adjustment. Either navigate the multilevel On Screen Display menu through buttons on the display itself or use the Philips SmartControl software to easily adjust the various display settings in a familiar way

## Specifications

Please note that this is a pre-sales leaflet. The contents of this leaflet reflect the best of our knowledge per date and country mentioned above. The contents of this leaflet are subject to change without notice. Philips does not accept any liability as to the contents of this leaflet.

### Picture/Display

LCD panel type	TFT-LCD
Backlight type	W-LED system
Panel Size	27 inch / 68.6 cm
Effective viewing area	597.6 (H) x 336.15 (V)
Aspect ratio	16:9
Optimum resolution	1920 x 1080 @ 60Hz
Response time (typical)	5 ms
Brightness	300 cd/m <sup>2</sup>
Contrast ratio (typical)	1000:1
SmartContrast	20,000,000:1

Pixel pitch	0.311 x 0.311 mm
Viewing angle	170° (H) / 160° (V) @ C/R > 10
Picture enhancement	SmartImage
Display colors	16.7M
Scanning Frequency sRGB	30 - 83 kHz (H) / 56 - 75 Hz (V) Yes

### Connectivity

Signal Input	DisplayPort DVI-D (digital, HDCP) VGA (Analog )
Sync Input	Separate Sync

data subject to change  
2015, July 18

Sync on Green

### Convenience

User convenience	SmartImage PowerSensor Brightness Menu Power On/Off
Control software OSD Languages	SmartControl Premium English French German Italian Portuguese Russian Simplified Chinese Spanish
Other convenience	Kensington lock VESA mount (100x100mm)
Plug & Play Compatibility	DDC/CI Mac OS X sRGB Windows 8/7/Vista

### Stand

Height adjustment	150 mm
Pivot	90 degree
Swivel	-65/65 degree
Tilt	-5/20 degree

### Power

ECO mode	14 W (typ.)
On mode	21.3 W (typ.) (EnergyStar 6.0 test method)
Standby mode	0.3 W (typ.)
Off mode	0.1 W (typ.)
Power LED indicator	Operation - White Standby mode- White (blinking)
Power supply	100-240VAC, 50-60Hz Built-in

### Dimensions

Product with stand(max height)	639 x 580 x 242 mm
Product with stand(max height)	25.2 x 22.8 x 9.5 inch
Product without stand in inch	25.2 x 15.9 x 2.5 inch
Packaging in mm (WxHxD)	750 x 234 x 490 mm
Packaging in inch (WxHxD)	29.5 x 9.2 x 19.3 inch
Product without stand (mm)	639 x 405 x 64 mm

### Weight

Product with stand (kg)	7.50 kg
Product with stand (lb)	16.50 lb
Product without stand (kg)	5.10 kg
Product without stand (lb)	11.22 lb
Product with packaging (kg)	10.35 kg
Product with packaging (lb)	22.77 lb

### Operating conditions

Temperature range (operation)	0°C to 40°C °C
Temperature range (storage)	-20°C to 60°C °C
Relative humidity	20%-80 %
Altitude	Operation: +12,000ft (3,658m), Non-operation: +40,000ft (12,192m)
MTBF	30,000 hour(s)

### Sustainability

Environmental and energy	EnergyStar 6.0 PowerSensor EPEAT Gold* RoHS
Recyclable packaging material	100 %
Recycled material	25%
Specific Substances	PVC / BFR free housing Mercury free Lead free

### Compliance and standards

Regulatory Approvals	BSMI CE Mark FCC Class B GOST SASO SEMKO TCO 6.0 TUV Ergo TUV/GS UL/cUL WEEE
----------------------	--

### Cabinet

Front bezel	Black
Rear cover	Black
Foot	Black
Finish	Texture

\* EPEAT Gold is valid only where Philips registers the product. Please visit [www.epeat.net](http://www.epeat.net) for registration status in your country.



data subject to change  
2015, July 18

Version: 1.0.1  
UPC: 609585243903

© 2015 Koninklijke Philips Electronics N.V.  
All rights reserved.

Specifications are subject to change without notice. Trademarks are the property of Koninklijke Philips Electronics N.V. or their respective owners.

[www.philips.com](http://www.philips.com)