



#### LCD monitor with SoftBlue Technology

- P Line
- 22 (21.5"/54.6 cm diag.)
- Full HD (1920 x 1080)

221P6EPYEB/01

## Brilliant performance from every angle

with a full HD IPS display

Designed for you, the new Philips Brilliance monitor features new SoftBlue LED Technology for easy-on-the-eyes, brilliant, colourful images and maximum productivity.

### Benefits

#### Designed for people

- SoftBlue Technology is easy on the eyes and maintains colour
- Less eye fatigue with Flicker-Free technology
- SmartErgoBase enables user-friendly ergonomic adjustments

#### Brilliant performance

- IPS-ADS wide-view technology for image and colour accuracy
- SmartImage pre-sets for easy optimised image settings

#### Easy to experience

- Built-in stereo speakers for multimedia
- USB 3.0 Hub for convenient access and fast charging
- DisplayPort connection for maximum visuals

#### Sustainable Eco-design

- PowerSensor saves up to 80% energy costs
- LightSensor for the perfect brightness with minimal power
- 65% post-consumer recycled plastics with TCO Edge

# PHILIPS

## Features

### SoftBlue Technology



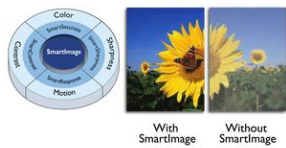
SoftBlue LED technology uses smart technology to reduce harmful shortwave blue light without affecting the colour or image of the display. SoftBlue LED technology is certified by international testing organisation TUV Rheinland to reduce harmful blue light.

### IPS-ADS technology



IPS-ADS displays use an advanced technology that gives you extra-wide viewing angles of 178/178 degrees, making it possible to view the display from almost any angle. Unlike standard TN panels, IPS-ADS displays give you remarkably crisp images with vivid colours, making them ideal not only for Photos, movies and web browsing, but also for professional applications that demand colour accuracy and consistent brightness at all times.

### SmartImage



SmartImage is an exclusive leading edge Philips technology that analyses the content displayed on your screen and optimises your display performance. This user-friendly interface allows you to select various modes, like Office, Photo, Movie, Game, Economy etc., to fit the application in use. Based on the selection, SmartImage dynamically optimises the contrast, colour saturation and sharpness of images and videos for ultimate display performance. The Economy mode option offers you major power savings. All in real time at the touch of a single button!

### Flicker-Free technology



Due to the way brightness is controlled on LED-backlit screens, some users experience flicker on their screen which causes eye fatigue. Philips Flicker-Free technology applies a new solution to regulate brightness and reduce flicker for more comfortable viewing.

### SmartErgoBase

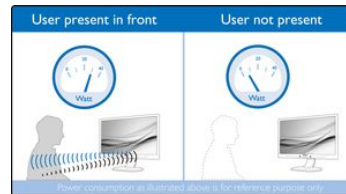


The SmartErgoBase is a monitor base that delivers ergonomic display comfort and provides cable management. The user-friendly height, swivel, tilt and rotation angle adjustments of the base allow the monitor to be positioned for maximum comfort to help ease the physical strains of a long workday. In addition, cable management reduces cable clutter and keeps the workspace neat and professional.

### Built-in stereo speakers

A pair of high-quality stereo speakers built into a display device. They may be visible front firing, or invisible down firing, top firing, rear firing etc. depending on model and design.

### PowerSensor



PowerSensor is a built-in 'people sensor' that transmits and receives harmless infrared signals to determine if the user is present and then automatically reduces monitor brightness when the user steps away from the desk, cutting energy costs by up to 80 percent and prolonging monitor life.

### USB 3.0 Hub with FastCharge

Super Speed USB 3.0 deploys 5.0 gbit/s transfer rate, which is about 10 times faster than USB 2.0 standard, significantly reducing data transfer time to save you time and money. With more bandwidth, super speed transfer rates, better power management and superior overall performance, USB 3.0 sets the latest global standard and allows you to use large capacity storage devices. Now you don't have to wait so long for devices to charge. New FastCharge enables quick charging to charge and go. USB 3.0 is also backward compatible with USB 2.0 devices.

### DisplayPort connection



DisplayPort is a digital link from PC to monitor without any conversion. With higher capabilities than DVI standard, it is fully capable to support up to 15 metre cables and 10.8 Gbps/sec data transfer. With this high performance and zero latency, you get the fastest imaging and refresh rates — making DisplayPort the best choice for not only general office or home use, but also for the more demanding gaming and films, video editing and more. It also keeps interoperability in mind via the use of various adapters.

## LightSensor



LightSensor uses a smart sensor to adjust the picture brightness depending on the light conditions in the room for the perfect picture with minimal power usage.

## Specifications

Please note that this is a pre-sales leaflet. The contents of this leaflet reflect the best of our knowledge per date and country mentioned above. The contents of this leaflet are subject to change without notice. Philips does not accept any liability as to the contents of this leaflet.

### Picture/Display

LCD panel type	IPS-ADS LCD
Backlight type	W-LED system
Panel Size	21.5 inch/54.6 cm
Effective viewing area	476.6 (H) x 268.1 (V)
Aspect ratio	16:9
Optimum resolution	1920 x 1080 @ 60 Hz
Response time (typical)	14 ms
SmartResponse (typical)	5 ms (Grey to Grey)
Brightness	250 cd/m <sup>2</sup>
Contrast ratio (typical)	1000:1
SmartContrast	20,000,000:1
Pixel pitch	0.248 x 0.248 mm
Viewing angle	178° (H)/178° (V) @ C/R > 10
Picture enhancement	SmartImage
Display colours	16.7 M
Scanning Frequency	30 - 83 kHz (H) / 56 - 76 Hz (V)
SoftBlue	Yes
sRGB	Yes

### Connectivity

Signal Input	DisplayPort DVI-D (digital, HDCP) VGA (Analogue)
USB Sync Input	USB 3.0x4 (1 w/fast charging)* Separate Sync Sync on Green
Audio (In/Out)	PC audio-in Headphone out

### Convenience

Built-in Speakers	2 W x 2
User convenience	SmartImage Volume PowerSensor Menu Power On/Off
OSD Languages	Brazil Portuguese Czech Dutch English Finnish French German Greek Hungarian Italian Japanese Korean Polish Portuguese Russian Simplified Chinese Spanish

## TCO Edge

TCO Edge certification is given to products that go beyond existing eco-labelling programmes. Over and above standard TCO requirements, it further mandates that the product uses a minimum of 65% post-consumer recycled plastics, is energy efficient, uses minimal hazardous materials, has 100% recyclable packaging and, amongst other requirements, is designed for easy recycling. You can rest assured that this Philips monitor is a cutting edge technology product, which is best in class ICT, benefitting you and the planet while helping you make a responsible green IT purchase!

Other convenience	Swedish Traditional Chinese Turkish Ukrainian Kensington lock VESA mount (100 x 100 mm) DDC/CI Mac OS X sRGB Windows 10 / 8.1 / 8 / 7
Plug and Play Compatibility	

### Stand

Height adjustment	130 mm
Pivot	90 degree
Swivel	-175/+175 degree
Tilt	-5/20 degree

### Power

ECO mode	10.12 W (typ.)
On mode	13.84 W (typ.) (EnergyStar 6.0 test method)
Standby mode	< 0.2 W (typ.)
Off mode	Zero watts with AC switch
Power LED indicator	Operation - White Standby mode - White (flashing)
Power supply	100-240 VAC, 50-60 Hz Built-in

### Dimensions

Product with stand (mm)	511 x 488 x 257 mm
Product without stand (mm)	511 x 319 x 52 mm
Packaging in mm (W x H x D)	565 x 493 x 184 mm

### Weight

Product with stand (kg)	5.60 kg
Product without stand (kg)	3.10 kg
Product with packaging (kg)	7.94 kg

### Operating conditions

Temperature range (operation)	0°C to 40°C °C
Temperature range (storage)	-20°C to 60°C °C
Relative humidity	20%–80% %
Altitude	Operation: +12,000 ft (3658 m), Non-operation: +40,000 ft (12,192 m)
MTBF (demonstrated)	70,000 hrs (excluded backlight)

## Sustainability

Environmental and energy	PowerSensor LightSensor EnergyStar 6.0 EPEAT Gold* TCO edge RoHS
Recyclable packaging material	100 %
Post-consumer recycled plastic	65%
Specific Substances	PVC/BFR free housing Mercury free Lead free

## Compliance and standards

Regulatory Approvals	CE Mark FCC Class B SEMKO cETLus CU-EAC TCO 6.0 TUV Ergo
----------------------	--

TUV/GS  
EPA  
PSB  
WEEE  
C-Tick  
UKRAINIAN  
CECP  
ICES-003  
TUV Cert. — blue light cut-off

## Cabinet

Front bezel	Black
Rear cover	Black
Foot	Black
Finish	Texture

## What's in the box?

Monitor with stand	yes
Cables	VGA, DVI, Display port, Audio, Power
User Documentation	yes

\* EPEAT Gold is valid only where Philips registers the product. Please visit [www.epeat.net](http://www.epeat.net) for registration status in your country.

\* Smart response time is the optimum value from either GtG or GtG (BW) tests.



data subject to change  
2017, August 4

Version: 8.0.1  
EAN: 8712581734497

© 2017 Koninklijke Philips N.V.  
All rights reserved.

Specifications are subject to change without notice. Trademarks are the property of Koninklijke Philips N.V. or their respective owners.

[www.philips.com](http://www.philips.com)