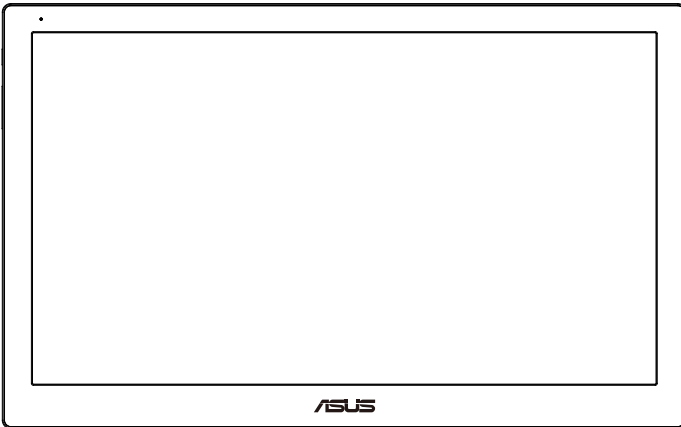


**ASUS<sup>®</sup>**

**MB169B+**

**USB Monitor**

# **User Guide**



# Table of contents

Notices.....	iii
Safety information .....	iv
Care & cleaning.....	v
Takeback services.....	vi
1.1 Welcome! .....	1-1
1.2 Package contents.....	1-1
1.3 System requirement.....	1-2
1.4 Monitor introduction .....	1-3
1.4.1 Front view .....	1-3
1.4.2 Auto-Rotate .....	1-4
2.1 Adjusting the monitor.....	2-1
2.2 Connecting the USB cable .....	2-2
2.3 Installing driver .....	2-3
3.1 Specifications.....	3-1
3.2 Troubleshooting (FAQ).....	3-2

Copyright © 2015 ASUSTeK COMPUTER INC. All Rights Reserved.

No part of this manual, including the products and software described in it, may be reproduced, transmitted, transcribed, stored in a retrieval system, or translated into any language in any form or by any means, except documentation kept by the purchaser for backup purposes, without the express written permission of ASUSTeK COMPUTER INC. (“ASUS”).

Product warranty or service will not be extended if: (1) the product is repaired, modified or altered, unless such repair, modification or alteration is authorized in writing by ASUS; or (2) the serial number of the product is defaced or missing.

ASUS PROVIDES THIS MANUAL “AS IS” WITHOUT WARRANTY OF ANY KIND, EITHER EXPRESS OR IMPLIED, INCLUDING BUT NOT LIMITED TO THE IMPLIED WARRANTIES OR CONDITIONS OF MERCHANTABILITY OR FITNESS FOR A PARTICULAR PURPOSE. IN NO EVENT SHALL ASUS, ITS DIRECTORS, OFFICERS, EMPLOYEES OR AGENTS BE LIABLE FOR ANY INDIRECT, SPECIAL, INCIDENTAL, OR CONSEQUENTIAL DAMAGES (INCLUDING DAMAGES FOR LOSS OF PROFITS, LOSS OF BUSINESS, LOSS OF USE OR DATA, INTERRUPTION OF BUSINESS AND THE LIKE), EVEN IF ASUS HAS BEEN ADVISED OF THE POSSIBILITY OF SUCH DAMAGES ARISING FROM ANY DEFECT OR ERROR IN THIS MANUAL OR PRODUCT.

SPECIFICATIONS AND INFORMATION CONTAINED IN THIS MANUAL ARE FURNISHED FOR INFORMATIONAL USE ONLY, AND ARE SUBJECT TO CHANGE AT ANY TIME WITHOUT NOTICE, AND SHOULD NOT BE CONSTRUED AS A COMMITMENT BY ASUS. ASUS ASSUMES NO RESPONSIBILITY OR LIABILITY FOR ANY ERRORS OR INACCURACIES THAT MAY APPEAR IN THIS MANUAL, INCLUDING THE PRODUCTS AND SOFTWARE DESCRIBED IN IT.

Products and corporate names appearing in this manual may or may not be registered trademarks or copyrights of their respective companies, and are used only for identification or explanation and to the owners' benefit, without intent to infringe.

# Notices

## **Federal Communications Commission Statement**

This device complies with Part 15 of the FCC Rules. Operation is subject to the following two conditions:

- This device may not cause harmful interference, and
- This device must accept any interference received including interference that may cause undesired operation.

This equipment has been tested and found to comply with the limits for a Class B digital device, pursuant to Part 15 of the FCC Rules. These limits are designed to provide reasonable protection against harmful interference in a residential installation. This equipment generates, uses and can radiate radio frequency energy and, if not installed and used in accordance with manufacturer's instructions, may cause harmful interference to radio communications. However, there is no guarantee that interference will not occur in a particular installation. If this equipment does cause harmful interference to radio or television reception, which can be determined by turning the equipment off and on, the user is encouraged to try to correct the interference by one or more of the following measures:

- Reorient or relocate the receiving antenna.
- Increase the separation between the equipment and receiver.
- Connect the equipment to an outlet on a circuit different from that to which the receiver is connected.
- Consult the dealer or an experienced radio/TV technician for help.

## **Canadian Department of Communications Statement**

This digital apparatus does not exceed the Class B limits for radio noise emissions from digital apparatus set out in the Radio Interference Regulations of the Canadian Department of Communications.

This class B digital apparatus complies with Canadian ICES-003.

## **Safety information**

- Before setting up this USB monitor, carefully read all the documentation that came with the package.
- To prevent fire or shock hazard, never expose this USB monitor to rain or moisture.
- Never try to open this USB monitor cabinet.
- Before using this USB monitor, make sure all cables are correctly connected and the power cables are not damaged. If you detect any damage, contact your dealer immediately.
- Avoid dust, humidity, and temperature extremes. Do not place this USB monitor in any area where it may become wet. Place this USB monitor on a stable surface.
- Never push objects or spill liquid of any kind into the slots on this USB monitor cabinet.
- If you encounter technical problems with this USB monitor, contact a qualified service technician or your retailer.
- This USB monitor is powered by USB port which complies with LPS and SELV circuit according to IEC60950-1:2005.

## Care & cleaning

- Cleaning. Turn your monitor off and unplug the power cord. Clean the monitor surface with a lint-free, non-abrasive cloth. Stubborn stains may be removed with a cloth dampened with mild cleaner.
- Avoid using a cleaner containing alcohol or acetone. Use a cleaner intended for use with the LCD. Never spray cleaner directly on the screen, as it may drip inside the monitor and cause an electric shock.

### The following symptoms are normal with the monitor:

- You may find slightly uneven brightness on the screen depending on the desktop pattern you use.
- When the same image is displayed for hours, an afterimage of the previous screen may remain after switching the image. The screen will recover slowly or you can turn off the Power Switch for hours.
- When the screen becomes black or flashes, or cannot work anymore, contact your dealer or service center to fix it. Do not repair the screen by yourself!

### Conventions used in this guide



**WARNING:** Information to prevent injury to yourself when trying to complete a task.



**CAUTION:** Information to prevent damage to the components when trying to complete a task.



**IMPORTANT:** Information that you **MUST** follow to complete a task.



**NOTE:** Tips and additional information to aid in completing a task.

## Where to find more information

Refer to the following sources for additional information and for product and software updates.

### 1. **ASUS websites**

The ASUS websites worldwide provide updated information on ASUS hardware and software products. Refer to **<http://www.asus.com>**

### 2. **Optional documentation**

Your product package may include optional documentation that may have been added by your dealer. These documents are not part of the standard package.

## Takeback services

ASUS recycling and takeback programs come from our commitment to the highest standards for protecting our environment. We believe in providing solutions for our customers to be able to responsibly recycle our products, batteries and other components as well as the packaging materials.

Please go to **<http://csr.asus.com/english/Takeback.htm>** for detail recycling information in different region.

## 1.1 Welcome!

Thank you for purchasing the ASUS® USB monitor!

The latest ASUS USB monitor provides great portability and simplicity to your daily life, enhancing both of your viewing experience and style.

## 1.2 Package contents

Check your package for the following items:

- ✓ USB Monitor
- ✓ Quick Start Guide
- ✓ CD-ROM
- ✓ Warranty Card
- ✓ USB 3.0 Cable
- ✓ Leather Case/Stand



- 
- If any of the above items is damaged or missing, contact your retailer immediately.
-

## 1.3 System requirement

### Minimum requirements:

- Windows 7 with 1.4GHz Core 2 Duo
- Mac OS X 10.6
- 1GB RAM

### Recommended requirements:

- Windows 7 with 2.4GHz Core 2 Duo or above
- Mac OS X 10.6 or above
- 2GB RAM

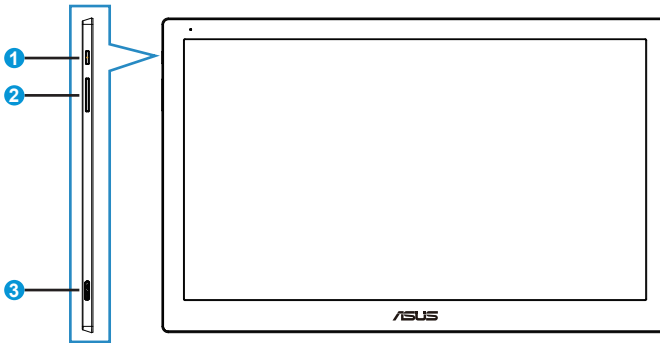
### Video Playback Recommendations:

- Windows Media Player(WMP)
- CyberLink PowerDVD
- Core WinDVD



## 1.4 Monitor introduction

### 1.4.1 Front view



#### 1. Power Button/Power Indicator

- Press this button to turn the monitor on or off.
- The color of the power indicator defines as the below table.

Status	Description
White	ON
Amber	Standby mode
Dark	OFF

#### 2. Brightness Adjustment

- Press this button to adjust brightness level.

#### 3. Micro B USB 3.0 Port

## 1.4.2 Auto-Rotate

Our USB monitor is equipped with **G-sensor** to detect its real-time position. The screen shot will automatically change from landscape to portrait position, or vice versa, depending on monitor's current position.

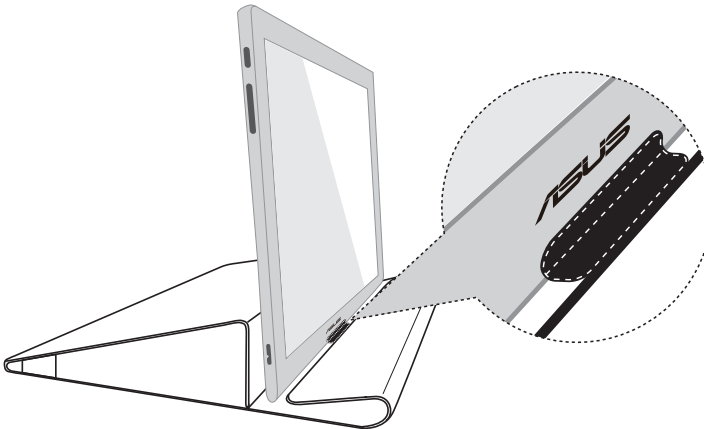
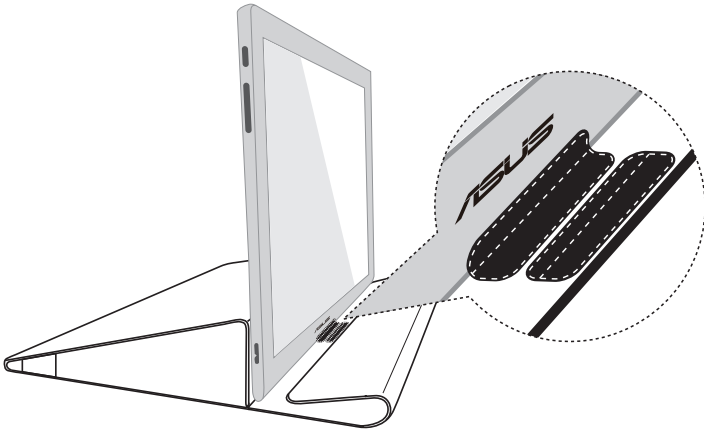
To disable, you can uncheck this function via **ASUS Ezlink Utility**.



- The **Auto-Rotate** function will not work under **MAC OS** or **Windows XP** environment.
-

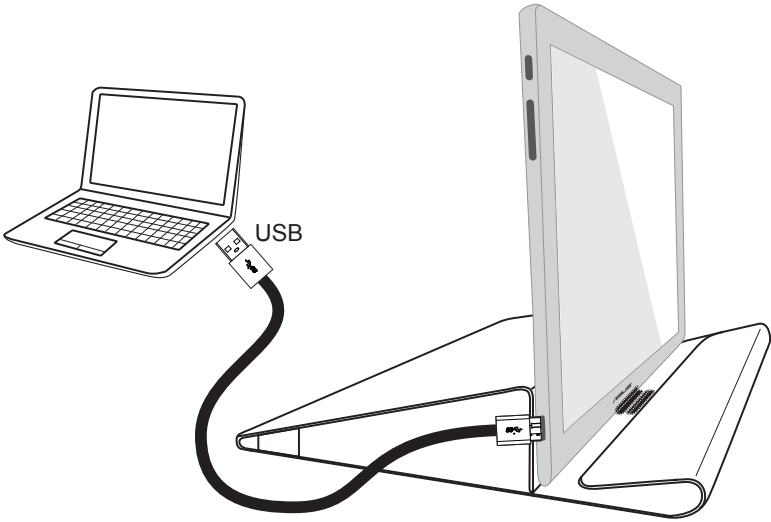
## 2.1 Adjusting the monitor

- For optimal viewing, we recommend that you look at the full face of the monitor, then adjust the monitor to the angle that is most comfortable for you.
- You can adjust the monitor's angle by two positions with leather case.
- There are two strips for viewing angle adjustment. For upright position, use the far side strip from the top cover. For tilt-back position, use the other one instead.



## 2.2 Connecting the USB cable

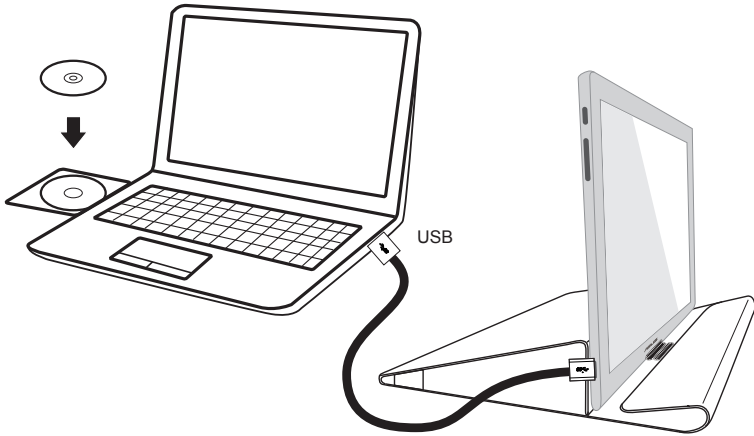
Connect one end of the USB cable to the monitor's USB port, the other end to your computer's USB port



## 2.3 Installing driver

The USB monitor will work only when the included support-CD are installed properly. Before installation, please make sure the USB cable is connected between the USB monitor and the system.

Insert the included support-CD into your computer, the auto-run program will start to install the needed software and driver.



- The auto-run program only works under Windows Operation System.
- Please check ASUS Support website for latest driver and software updates.

### 3.1 Specifications

<b>Model</b>	<b>MB169B+</b>
Panel Size	15.6" (16:9, 39.62cm) wide screen
Resolution	1920 x 1080
Brightness (Typ.)	200 cd/m <sup>2</sup>
Contrast	≥600:1
Display Colors	262 K
Digital Input	USB 3.0
Colors	Dark Gray
Power Consumption	≤ 7 W
Operating Temp.	0° ~ 50°
Phys. Dimension (WxHxD)	379.1 x 235.8 x 8.5 mm
Box Dimension (WxHxD)	435 x 297 x 57 mm
Net Weight (Esti.)	0.8 kg
Gross Weight (Esti.)	2 kg
Regulation Approvals	UL/cUL, CB, CCC, EuP, BSMI, EAC(CU), RoHS, WEEE, J-MOSS, EMC, CE, FCC, KCC, VCCI, RCM.

\*Specifications are subject to change without notice.

## 3.2 Troubleshooting (FAQ)

Problem	Possible Solution
Power LED is not ON	<ul style="list-style-type: none"><li>• Press the ⏻ button to check if the monitor is in the ON mode.</li><li>• Check if the USB cable is properly connected to the monitor and the power outlet.</li></ul>
The power LED lights amber and there is no screen image	<ul style="list-style-type: none"><li>• Check if the monitor and the computer are in the ON mode.</li><li>• Make sure the USB cable is properly connected between the USB monitor and the computer.</li><li>• Inspect the signal cable and make sure none of the pins are bent.</li><li>• Connect the computer with another available monitor to check if the computer is properly working.</li></ul>
Screen image is too light or dark	<ul style="list-style-type: none"><li>• Adjust the Brightness settings via the button.</li></ul>
Screen image bounces or a wave pattern is present in the image	<ul style="list-style-type: none"><li>• Make sure the USB cable is properly connected between the USB monitor and the computer.</li><li>• Move electrical devices that may cause electrical interference.</li></ul>
Screen image has color defects (white does not look white)	<ul style="list-style-type: none"><li>• Inspect the USB cable and make sure that none of the pins are bent.</li></ul>