



LED-backlit LCD monitor

- Notebook docking display
- 23" (58.4 cm)
- Full HD (1920 x 1080)

231P4QUPEB/27

Simplicity with notebook docking display

expand view with single-cable

This innovative notebook docking display with multimedia enables easy port replication. Expand your viewing workspace, keep peripherals connected, access internet, all with a single SuperSpeed USB cable.

Benefits

Simplicity makes sense

- Single USB 3.0 cable docks your notebook to the display
- Transmit video and audio from the notebook with single cable
- Connect with Internet, Intranet with built in ethernet port
- Access all peripherals and keyboard, mouse from the hub
- True plug and play for hassle free dual display setup

Ergonomic design

- SmartErgoBase enables people-friendly ergonomic adjustments

- Low bezel-to-table height for maximum reading comfort

Sustainable Eco-friendly solution

- IPS technology for full colors and wide viewing angles
- PowerSensor saves up to 80% energy costs
- 65% post consumer recycled plastics with TCO Edge
- PVC-BFR free housing

PHILIPS

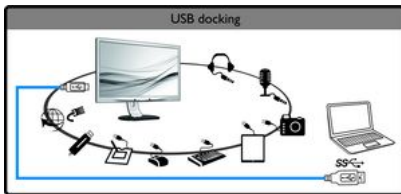
Features

Expand view with single cable



This innovative large Philips display enables easy port replication for any notebook. Especially suitable for latest Ultra book type devices with limited connectors, this display with built-in USB 3.0 hub, Ethernet, and stereo speakers enables you to transmit video, audio, and connect to internet or intranet directly with a single cable USB connection. By this advanced USB 3.0 or USB 2.0 plug and play connection, you can now expand your desktop using both your NBPC and Philips display's real-estate without having to worry about cumbersome resolution adjustments or mess around with cables.

USB hub for peripherals



You can now connect optional full sized Keyboard and mouse to this innovative Philips display's USB hub to improve your productivity. Simply connect your Notebook to this display with a single USB cable, and you are ready to utilize the attached additional peripherals like external HDD, camera, USB drive along with Full HD video, Audio, and Internet functions. Should you prefer, you can of course still utilize your NBPC's keyboard and track pad as usual.

SmartErgoBase



The SmartErgoBase is a monitor base that delivers ergonomic display comfort and provides cable management. The base's people-friendly height, swivel, tilt and rotation angle adjustments position the monitor for maximum comfort that can ease the physical strains of a long workday; cable management reduces cable clutter and keeps the workspace neat and professional.

Low bezel-to-table height



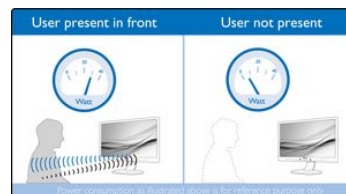
The Philips monitor, thanks to its advanced SmartErgoBase, can be lowered down almost to desk level for a comfortable viewing angle. Low bezel-to-table height is the perfect solution if you use bifocals, trifocals or progressive lens glasses for your computing work. Additionally, it allows for users with greatly different heights to use the monitor in their preferred angle and height settings, helping them reduce fatigue and strain.

IPS technology



IPS displays use an advanced technology which gives you extra wide viewing angles of 178/178 degree, making it possible to view the display from almost any angle - even in 90 degree Pivot mode! Unlike standard TN panels, IPS displays gives you remarkably crisp images with vivid colors, making it ideal not only for Photos, movies and web browsing, but also for professional applications which demand color accuracy and consistent brightness at all times.

PowerSensor



PowerSensor is a built-in 'people sensor' that transmits and receives harmless infrared signals to determine if user is present and automatically reduces monitor brightness when user steps away from the desk, cutting energy costs by up to 80 percent and prolonging monitor life

TCO Edge

TCO Edge certification is given to products which go beyond existing eco-labeling programs. Over and above standard TCO requirements, it further mandates that the product uses minimum 65% of post consumer recycled plastics, is energy efficient, uses minimal hazardous materials, has 100% recyclable packaging, and is designed for easy recycling amongst other requirements. You can rest assured that this Philips monitor is a cutting edge technology product which is best in class ICT, benefitting you and the planet while helping you make a responsible green IT purchase!

PVC-BFR free housing

This Philips monitor housing is free from brominated flame retardant and polyvinyl chloride (PVC-BFR free)

Specifications

Please note that this is a pre-sales leaflet. The contents of this leaflet reflect the best of our knowledge per date and country mentioned above. The contents of this leaflet are subject to change without notice. Philips does not accept any liability as to the contents of this leaflet.

Picture/Display

LCD panel type	IPS LCD
Backlight type	W-LED system
Panel Size	23 inch / 58.4 cm
Effective viewing area	509.18 x 286.41 mm
Aspect ratio	16:9
Optimum resolution	1920 x 1080 @ 60Hz
Response time (typical)	14 (Gray to Gray) ms
SmartResponse (typical)	7 ms (GTG_BW)
Brightness	250 cd/m ²
Contrast ratio (typical)	1,000:1
SmartContrast	20,000,000:1
Pixel pitch	0.265 x 0.265 mm
Viewing angle	178° (H) / 178° (V) @ C/R > 10
Picture enhancement	SmartImage
Display colors	16.7 M
Scanning Frequency sRGB	30 -83 kHz (H) / 56 -75 Hz (V) Yes

Connectivity

Signal Input	VGA (Analog)
Sync Input	Separate Sync (VGA only) Sync on Green (VGA only)

USB Connectivity

USB	USB 2.0 x 1, USB 3.0 x 2
Signal Input	USB 3.0 upstream
Audio In/Out	through USB
RJ45	through USB, 1Gbps
Microphone in	through USB
Headphone out	through USB

Convenience

Built-in Speakers	1.5Wx2
User convenience	SmartImage Input PowerSensor Menu Power On/Off
Control software	SmartControl Premium(VGA only) DisplayLink Graphics Software
OSD Languages	English French German Italian Portuguese Russian Simplified Chinese Spanish Korean
Other convenience	Kensington lock VESA mount (100x100mm)
Plug & Play Compatibility	DDC/CI (VGA only) Mac OS X sRGB Windows 10 / 8.1 / 8 / 7

Stand

Height adjustment	130 mm
Pivot	90 degree
Swivel	-65/65 degree
Tilt	-5/20 degree

Power

ECO mode	11.3 W (typ.)
On mode	20.2 W (typ.) (EnergyStar 6.0 test method)
Standby mode	<0.5 W (typ.)

Off mode	Zero watts with AC switch
Power LED indicator	Operation - White Standby mode- White (blinking)
Power supply	100-240VAC, 50-60Hz Built-in

Dimensions

Product with stand(max height)	547 x 515 x 220 mm
Product with stand(max height)	21.5 x 20.3 x 8.7 inch
Product without stand (mm)	547 x 343 x 60 mm
Product without stand in inch	21.5 x 13.5 x 2.4 inch
Packaging in mm (WxHxD)	600 x 400 x 263 mm
Packaging in inch (WxHxD)	23.6 x 15.7 x 10.4 inch

Weight

Product with stand (kg)	6.00 kg
Product with stand (lb)	13.20 lb
Product without stand (kg)	3.90 kg
Product without stand (lb)	8.58 lb
Product with packaging (kg)	8.41 kg
Product with packaging (lb)	18.50 lb

Operating conditions

Temperature range (operation)	0°C to 40°C °C
Temperature range (storage)	-20°C to 60°C °C
Relative humidity	20%-80 %
Altitude	Operation: +12,000ft (3,658m), Non-operation: +40,000ft (12,192m)
MTBF	30,000 (backlight) hour(s)

Sustainability

Environmental and energy	PowerSensor EnergyStar 6.0 EPEAT Gold* TCO edge RoHS
Recyclable packaging material	100 %
Post consumer recycled plastic	65%
Specific Substances	PVC / BFR free housing Mercury free Lead free

Compliance and standards

Regulatory Approvals	CE Mark cETLus FCC Class B PSB SEMKO TCO 6.0 TUV Ergo TUV/GS WEEE CCC CECP C-tick EAC
----------------------	---------------------------------------------------------------------------------------------------------------------------

Cabinet	EMC	Rear cover	Black
Front bezel	Black	Foot	Black
		Finish	Texture

- * We recommend to use USB 3.0 connection between your Notebook PC and the Philips display to ensure smooth images, video and audio.
- * Activities such as screen sharing, on-line streaming video and audio over the Internet can impact your network performance. Your hardware, network bandwidth and its performance will determine overall audio and video quality.
- * The notebook, keyboard, mouse as shown are for illustration purpose only, not included in the product.
- * "IPS" word mark / trademark and related patents on technologies belong to their respective owners.
- * EPEAT Gold is valid only where Philips registers the product. Please visit www.epeat.net for registration status in your country.
- * Smart response time is the optimum value from either GtG or GtG (BW) tests.



data subject to change
2017, November 2

Version: 3.0.1
UPC: 609585249226

© 2017 Koninklijke Philips N.V.
All rights reserved.

Specifications are subject to change without notice. Trademarks are the property of Koninklijke Philips N.V. or their respective owners.

www.philips.com