



#### QHD LCD Monitor with PowerSensor

- B Line
- 27" (68.6 cm)
- Quad HD (2560 x 1440)

272B7QPJEB/27

## Crisp views, efficient performance

with PowerSensor

The Philips PowerSensor display using 85% post consumer recycled plastics and PVC, BFR-free housing is ideal for eco-friendly productivity

### Benefits

#### Brilliant performance

- Crystal clear images with Quad HD 2560 x 1440 pixels
- IPS technology for full colours and wide viewing angles
- Narrow border display for seamless appearance
- SmartImage pre-sets for easy optimised image settings

#### Designed for comfortable productivity

- LowBlue Mode for easy-on-the-eyes productivity
- Less eye fatigue with Flicker-Free technology
- SmartErgoBase enables user-friendly ergonomic adjustments

#### Features for the way you work

- Built-in stereo speakers for multimedia
- USB 3.0 enables fast data transfers and smart phone charging
- SmartConnect with DisplayPort, HDMI and VGA connections

#### Sustainable Eco-design

- PowerSensor saves up to 80% energy costs

# PHILIPS

## Features

### CrystalClear images

These latest Philips screens deliver CrystalClear, Quad HD 2560x1440 or 2560x1080 pixel images. Utilising high-performance panels with a high-density pixel count, enabled by high-bandwidth sources like DisplayPort, HDMI, Dual link DVI, these new displays will make your images and graphics come alive. Whether you are a demanding professional requiring extremely detailed information for CAD-CAM solutions, using 3D graphic applications or a financial wizard working on huge spreadsheets, Philips displays will give you CrystalClear images.

### IPS technology



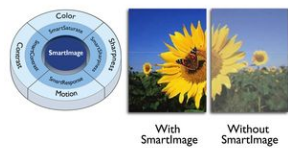
IPS displays use advanced technology that gives you extra-wide viewing angles of 178/178 degrees, making it possible to view the display from almost any angle — even in 90-degree Pivot mode! Unlike standard TN panels, IPS displays gives you remarkably crisp images with vivid colours, making it ideal not only for Photos, films and web browsing, but also for professional applications that demand colour accuracy and consistent brightness at all times.

### Ultra-narrow Border



The new Philips displays feature ultra-narrow borders which allow for minimal distractions and maximum viewing size. Especially suited for multi-display or tiling setups like gaming, graphic design and professional applications, the ultra-narrow border display gives you the feeling of using one large display.

### SmartImage



SmartImage is an exclusive leading edge Philips technology that analyses the content displayed on your screen and optimises your display performance. This user-friendly interface allows you to select various modes, like Office, Photo, Movie, Game, Economy etc., to fit the application in use. Based on the selection, SmartImage dynamically optimises the contrast, colour saturation and sharpness of images and videos for ultimate display performance. The Economy mode option offers you major power savings. All in real time at the touch of a single button!

### LowBlue Mode



Studies have shown that just as ultra-violet rays can cause eye damage, shortwave-length blue light rays from LED displays can cause eye damage and affect vision over time. Developed for wellbeing, the Philips LowBlue Mode

setting uses a smart software technology to reduce harmful shortwave blue light.

### Flicker-Free technology



Due to the way brightness is controlled on LED-backlit screens, some users experience flicker on their screen which causes eye fatigue. Philips Flicker-Free technology applies a new solution to regulate brightness and reduce flicker for more comfortable viewing.

### SmartErgoBase



The SmartErgoBase is a monitor base that delivers ergonomic display comfort and provides cable management. The user-friendly height, swivel, tilt and rotation angle adjustments of the base allow the monitor to be positioned for maximum comfort to help ease the physical strains of a long workday. In addition, cable management reduces cable clutter and keeps the workspace neat and professional.

### Built-in stereo speakers

A pair of high-quality stereo speakers built into a display device. They may be visible front firing, or invisible down firing, top firing, rear firing etc. depending on model and design.

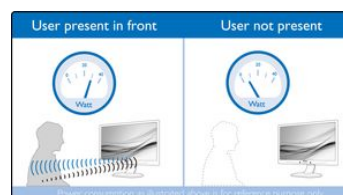
### USB 3.0 super speed

Super-Speed USB 3.0 deploys a 5.0 gbit/s transfer rate, which is about 10 times faster than the USB 2.0 standard, significantly reducing data transfer time and saving you time and money. With more bandwidth, super-speed transfer rates, better power management and superior overall performance, USB 3.0 sets the latest global standard allowing you to use large-capacity storage devices. Sync-N-Go technology ensures you don't have to wait for bandwidth to be freed up any more. Your investment in USB 2.0 devices is protected as it is backwards-compatible.

### SmartConnect

With a plethora of connectivity, these Philips displays come equipped with multiple connections like VGA, Display Port and universal HDMI connector, enabling you to enjoy high-resolution uncompressed video and audio content. USB connections ensure that you can have super-speed data transfers while having global connectivity. Regardless of what source you use, you can rest assured that this Philips display will ensure your investment is not made obsolete any time soon!

### PowerSensor



PowerSensor is a built-in 'people sensor' that transmits and receives harmless infrared signals to determine if the user is present and then automatically

reduces monitor brightness when then user steps away from the desk, cutting energy costs by up to 80 percent and prolonging monitor life

## Specifications

Please note that this is a pre-sales leaflet. The contents of this leaflet reflect the best of our knowledge per date and country mentioned above. The contents of this leaflet are subject to change without notice. Philips does not accept any liability as to the contents of this leaflet.

### Picture/Display

LCD panel type	IPS technology
Backlight type	W-LED system
Panel Size	27 inch / 68.5 cm
Effective viewing area	596.7 (H) x 335.7 (V)
Aspect ratio	16:9
Optimum resolution	2560 x 1440 @ 60Hz
Response time (typical)	5 ms (Grey to Grey)*
Brightness	350 cd/m <sup>2</sup>
Contrast ratio (typical)	1000:1
SmartContrast	20,000,000:1
Pixel pitch	0.233 x 0.233 mm
Viewing angle	178° (H)/178° (V) @ C/R > 10
Flicker-free	Yes
Picture enhancement	SmartImage
Display colours	16.7M (True 8 bit)
Scanning Frequency sRGB	30 - 99 kHz (H) / 50 - 76 Hz (V) Yes

### Connectivity

Signal Input	VGA (Analogue) DisplayPort 1.2 HDMI 1.4
Sync Input	Separate Sync Sync on Green
USB	USB 3.0 x 2 (1 w/fast charging)*
Audio (In/Out)	PC audio-in Headphone out

### Convenience

Built-in Speakers	2 W x 2
User convenience	SmartImage Input PowerSensor Menu Power On/Off LowBlue Mode
Control software	SmartControl
OSD Languages	Brazil Portuguese Czech Dutch English Finnish French German Greek Hungarian Italian Japanese Korean Polish Portuguese Russian Simplified Chinese Spanish Swedish Traditional Chinese Turkish Ukrainian
Other convenience	Kensington lock VESA mount (100 x 100 mm)
Plug and Play Compatibility	DDC/CI Mac OS X sRGB Windows 10 / 8.1 / 8 / 7

### Stand

Height adjustment	130 mm
Pivot	90 degree
Swivel	-175/175 degree
Tilt	-5/20 degree

### Power

ECO mode	20.7 W (typ.)
On mode	24.1 W (typ.) (EnergyStar 7.0 test method)
Standby mode	<0.3 W (typ.)
Off mode	Zero watts with Zero switch
Power LED indicator	Operation - White Standby mode - White (flashing)
Power supply	Built-in 100-240 VAC, 50-60 Hz

### Dimensions

Product with stand (max height)	614 x 548 x 257 mm
Product with stand (max height)	24.2 x 21.6 x 10.1 inch
Product without stand (mm)	614 x 372 x 56 mm
Product without stand in inches	24.2 x 14.6 x 2.2 inch
Packaging in mm (W x H x D)	690 x 458 x 252 mm
Packaging in inches (W x H x D)	27.2 x 18.0 x 9.9 inch

### Weight

Product with stand (kg)	7.86 kg
Product with stand (lb)	17.29 lb
Product without stand (kg)	5.44 kg
Product without stand (lb)	11.97 lb
Product with packaging (kg)	10.62 kg
Product with packaging (lb)	23.36 lb

### Operating conditions

Temperature range (operation)	0°C to 40°C °C
Temperature range (storage)	-20°C to 60°C °C
Relative humidity	20%–80% %
Altitude	Operation: +12,000 ft (3658 m), Non-operation: +40,000 ft (12,192 m)
MTBF (demonstrated)	70,000 hrs (excluded backlight)

### Sustainability

Environmental and energy	PowerSensor EnergyStar 7.0 EPEAT Gold* TCO edge RoHS
Recyclable packaging material	100 %
Post-consumer recycled plastic	85%
Specific Substances	PVC/BFR free housing Mercury free

Lead free

WEEE  
ICES-003  
UKRAINIAN

#### Compliance and standards

Regulatory Approvals CE Mark  
FCC Class B  
SEMKO  
cETLus  
CU-EAC  
TCO edge  
TUV Ergo  
TUV/GS  
EPA

#### Cabinet

Front bezel	Black
Rear cover	Black
Foot	Black
Finish	Texture

- \* "IPS" word mark / trademark and related patents on technologies belong to their respective owners.
- \* EPEAT Gold is valid only where Philips registers the product. Please visit [www.epeat.net](http://www.epeat.net) for registration status in your country.
- \* Fast charging through BC 1.2 standard
- \* Response time value equal to SmartResponse



data subject to change  
2017, September 27

Version: 2.0.1  
EAN: 609585250093

© 2017 Koninklijke Philips N.V.  
All rights reserved.

Specifications are subject to change without notice. Trademarks are the property of Koninklijke Philips N.V. or their respective owners.

[www.philips.com](http://www.philips.com)