



Philips Brilliance
LCD monitor with
PowerSensor

B Line
24" (61 cm)
WUXGA (1920 x 1200)

Brilliance

240B4QPYEB



Sustainable eco design display

with PowerSensor saves energy bills

The Philips PowerSensor LED display using 25% recycled materials and PVC, BFR free housing is ideal for eco-friendly productivity

Sustainable Eco-design

- PowerSensor saves up to 80% energy costs
- Zero power consumption with 0 watt hard switch
- PVC-BFR free housing

Excellent performance

- IPS technology for full colors and wide viewing angles
- DisplayPort delivers high bandwidth for ultra fine images
- Built-in stereo speakers for multimedia

Designed for people

- SmartErgoBase enables people-friendly ergonomic adjustments
- Low bezel-to-table height for maximum reading comfort

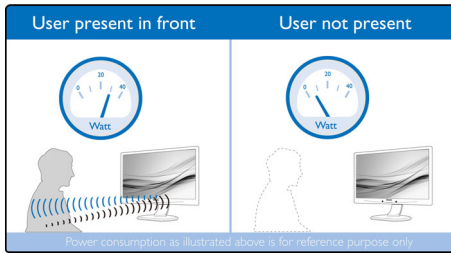
Easy to experience

- SmartImage presets for easy optimized image settings
- USB Hub with 2 ports for easy connections

PHILIPS

Highlights

PowerSensor



PowerSensor is a built-in 'people sensor' that transmits and receives harmless infrared signals to determine if user is present and automatically reduces monitor brightness when user steps away from the desk, cutting energy costs by up to 80 percent and prolonging monitor life

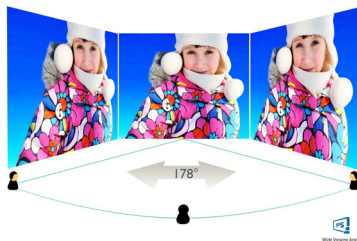
Zero power consumption

At the flick of the 0 watt hard switch which is conveniently located at the back, you can completely cut-off your monitor from AC power. This results in zero power consumption reducing your carbon footprint even further

PVC-BFR free housing

This Philips monitor housing is free from brominated flame retardant and polyvinyl chloride (PVC-BFR free)

IPS technology



IPS displays use an advanced technology which gives you extra wide viewing angles of 178/178 degree, making it possible to view the display from almost any angle - even in 90 degree Pivot mode! Unlike standard TN panels, IPS displays gives you remarkably crisp images with vivid colors, making it ideal not only for Photos, movies and web browsing, but also for professional applications which demand color accuracy and consistent brightness at all times.

DisplayPort

DisplayPort is a digital link from PC to Monitor without any conversion. With higher capabilities than DVI standard, it is fully capable to support up to 15meter cables and 10.8 Gbps/sec data transfer. With this high performance and zero latency, you get the fastest imaging and refresh rates - making DisplayPort the best choice for not only general office or home use, but also for the demanding gaming and movies, video editing and more. It also keeps interoperability in mind via use of various adapters.

Built-in stereo speakers

A pair of high quality stereo speakers built into a display device. It can be visible front firing, or invisible down firing, top firing, rear firing, etc depending on model and design.

SmartErgoBase



The SmartErgoBase is a monitor base that delivers ergonomic display comfort and provides cable management. The base's people-friendly height, swivel, tilt and rotation angle adjustments position the monitor for maximum comfort that can ease the physical strains of a long workday; cable management reduces cable clutter and keeps the workspace neat and professional.

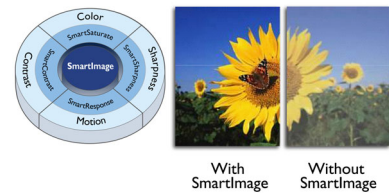
Low bezel-to-table height



The Philips monitor, thanks to its advanced SmartErgoBase, can be lowered down almost

to desk level for a comfortable viewing angle. Low bezel-to-table height is the perfect solution if you use bifocals, trifocals or progressive lens glasses for your computing work. Additionally, it allows for users with greatly different heights to use the monitor in their preferred angle and height settings, helping them reduce fatigue and strain.

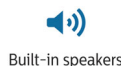
SmartImage



SmartImage is an exclusive leading edge Philips technology that analyzes the content displayed on your screen and gives you optimized display performance. This user friendly interface allows you to select various modes like Office, Photo, Movie, Game, Economy etc., to fit the application in use. Based on the selection, SmartImage dynamically optimizes the contrast, color saturation and sharpness of images and videos for ultimate display performance. The Economy mode option offers you major power savings. All in real time with the press of a single button!

2 Ports USB 2.0 HUB

USB Hub allows user to conveniently connect their plug and play multimedia devices such as USB memory devices, camera, portable HDD, Web camera, PDA, Printer and many other devices which has USB connection available. The conveniently located USB 2.0 Hub on the monitor allows USB 2.0 signals to pass thru to the computer. Note that many devices like cameras and HDD may need to be powered On independently, as they have higher power requirements than the monitor USB Hub can provide.



Specifications

Picture/Display

- LCD panel type: IPS technology
- Backlight type: W-LED system
- Panel Size: 24 inch / 61 cm
- Effective viewing area: 518.4 (H) x 324 (V)
- Display Screen Coating: Anti-Glare, 3H, Haze 25%
- Aspect ratio: 16:10
- Optimum resolution: 1920 x 1200 @ 60Hz
- Response time (typical): 5 ms (Gray to Gray)*
- Brightness: 250 cd/m²
- Contrast ratio (typical): 1,000:1
- SmartContrast: 20,000,000 :1
- Pixel pitch: 0.270 x 0.270 mm
- Viewing angle: 178° (H) / 178° (V), @ C/R > 10
- Picture enhancement: SmartImage
- Display colors: 16.7 M
- Scanning Frequency: 30 - 83 kHz (H) / 56 - 76 Hz (V)
- sRGB

Connectivity

- Signal Input: DisplayPort 1.2, DVI-D (digital, HDCP), VGA (Analog)
- USB: USB 2.0 x 2
- Sync Input: Separate Sync, Sync on Green
- Audio (In/Out): PC audio-in, Headphone out

Convenience

- Built-in Speakers: 1.5 W x 2 (above)
- User convenience: SmartImage, Volume, PowerSensor, Menu, Power On/Off
- Control software: PowerSensor, SmartControl
- OSD Languages: Brazil Portuguese, Czech, Dutch, English, Finnish, French, German, Greek, Hungarian, Italian, Japanese, Korean, Polish, Portuguese, Russian, Simplified Chinese, Spanish, Swedish, Traditional Chinese, Turkish, Ukrainian
- Other convenience: Kensington lock, VESA mount (100x100mm)
- Plug & Play Compatibility: DDC/CI, Mac OS X, sRGB, Windows 7, Windows 8

Stand

- Height adjustment: 130 mm
- Pivot: 90 degree
- Swivel: -65/65 degree
- Tilt: -5/20 degree

Power

- ECO mode: 12.3 W (typ.)
- On mode: 18.3 W (typ.) (EnergyStar 7.0 test method)
- Standby mode: < 0.3 W (typ.)
- Off mode: Zero watts with Zero switch
- Power LED indicator: Operation - White, Standby mode- White (blinking)
- Power supply: Built-in, 100-240VAC, 50-60Hz

Dimensions

- Product with stand(max height): 555 x 550 x 244 mm
- Product without stand (mm): 555 x 388 x 65 mm
- Packaging in mm (WxHxD): 632 x 457 x 286 mm

Weight

- Product with stand (kg): 6.90 kg
- Product without stand (kg): 4.57 kg
- Product with packaging (kg): 9.49 kg

Operating conditions

- Temperature range (operation): 0°C to 40°C °C
- Temperature range (storage): -20°C to 60°C °C
- Relative humidity: 20%-80 %
- Altitude: Operation: +12,000ft (3,658m), Non-operation: +40,000ft (12,192m)
- MTBF: 40,000 hour(s)

Sustainability

- Environmental and energy: EnergyStar 7.0, EPEAT Gold*, PowerSensor, RoHS
- Recyclable packaging material: 100 %
- Recycled material: 25%
- Specific Substances: PVC / BFR free housing, Mercury free, Lead free

Compliance and standards

- Regulatory Approvals: BSMI, CE Mark, cETLus, FCC Class B, GOST, SEMKO, TUV Ergo, TUV/GS, WEEE, TCO 7.0

Cabinet

- Front bezel: Black
- Rear cover: Black
- Foot: Black
- Finish: Texture



Issue date 2017-11-23

Version: 3.0.1

12 NC: 8670 001 37822
EAN: 87 12581 73998 0

© 2017 Koninklijke Philips N.V.
All Rights reserved.

Specifications are subject to change without notice.
Trademarks are the property of Koninklijke Philips N.V.
or their respective owners.

www.philips.com

* EPEAT Gold is valid only where Philips registers the product. Please visit www.epeat.net for registration status in your country.

* "IPS" word mark / trademark and related patents on technologies belong to their respective owners.

* Response time value equal to SmartResponse