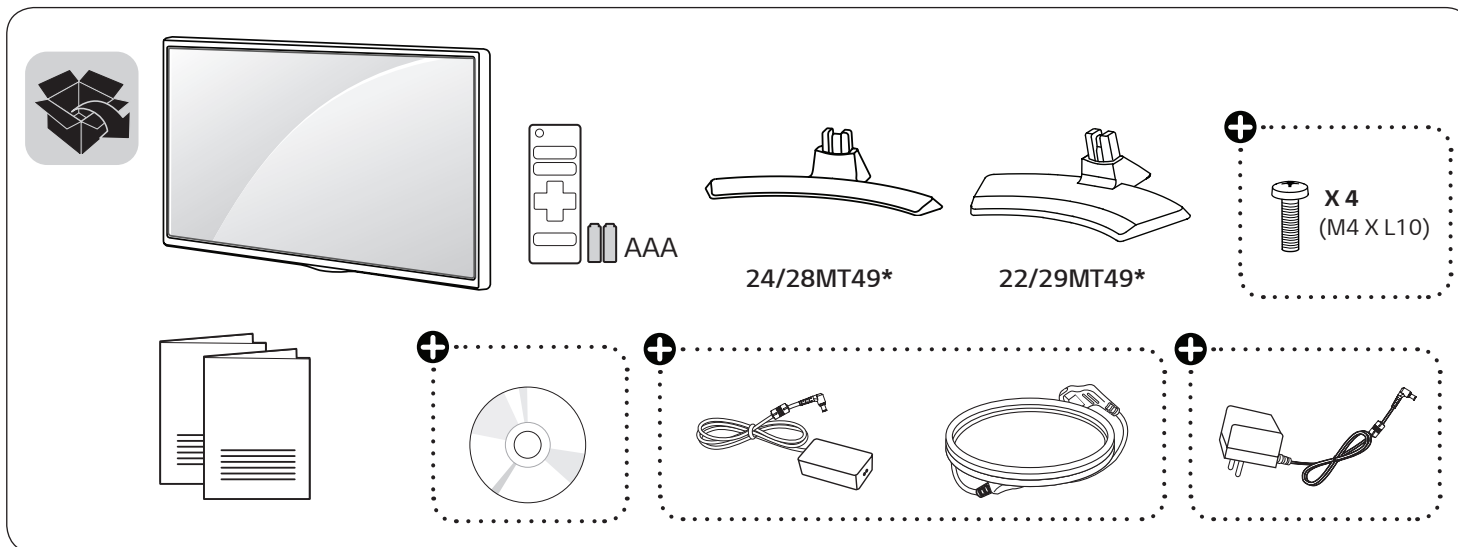




LED TV

22MT49DF / 22MT49VF / 24MT49DF / 24MT49VF / 24MT49VW / 24MT49U
28MT49DF / 28MT49VF / 28MT49VW / 28MT49U / 29MT49VF / 29MT49DF



www.lg.com



+ Depending on country / Në varësi të shtetit / В зависимости от страната / Ovisno o zemlji / Závísí na zemi / Zavisno od zemlje / Afhankelij van het land / En función del país / Sõltub riigist / Selon les pays / Abhängig vom Land / Ανάλογα με τη χώρα / A seconda del Paese / Елге байланысты / Atkarīgs no valsts / Priklausomai nuo šalies / Во зависност од земјата / Országfüggő / Zależnie od kraju / Dependendo do país / În funcție de țară / В зависимости от страны / Závísí od krajiny / Odvisno od države / Залежно від країни / Mamlakatga bog'liq ravishda / حسب البلد / Ülkeye baġli

P/No: MFL69713405 (1703-REV02)

Printed in Korea



English	Read Safety and Reference .	Latviešu	Izlasiet Drošībai un uzziņai .
Shqip	Lexo Siguria dhe referencat .	Lietuvių k.	Perskaitykite „ Saugumas ir nuorodos “.
Български	Прочетете Безопасност и справки .	Македонски	Прочитајте во Безбедносни информации и референтни материјали .
Hrvatski	Pročitajte Sigurnost i reference .	Magyar	Lásd: Biztonsági óvintézkedések .
Česky	Přečtěte si část Bezpečnost a reference .	Polski	Przeczytaj Zasady bezpieczeństwa i informacje dodatkowe .
Srpski	Pročitajte Bezbednost i informacije .	Português	Consulte o manual Segurança e Referência .
Nederlands	Lees Veiligheid en referentie goed door.	Română	Citiți Siguranță și referințe .
Español	Leer Seguridad y Referencias .	Русский	Прочитайте Руководство по технике безопасности .
Eesti	Lugege Ohutus ja viited .	Slovenčina	Prečítajte si časť Bezpečnosť a odkazy .
Français	Lire le document Sécurité et référence .	Slovenščina	Preberite Varnostne informacije in napotki .
Deutsch	Sicherheitshinweise und Referenzen lesen.	Українська	Прочитайте Правила безпеки та довідкова інформація .
Ελληνικά	Ανάγνωση Ασφάλεια και αναφορά .	O'zbekcha	Xavfsizlik bo'yicha ko'rsatmalar va havolalarni o'qing .
Italiano	Leggere Sicurezza e informazioni di riferimento .	Türkçe	Güvenlik ve Referans bölümünü okuyun.
Қазақша	Қауіпсіздік нұсқаулық бөлімін оқыңыз .		

قراءة الأمان والمرجع.

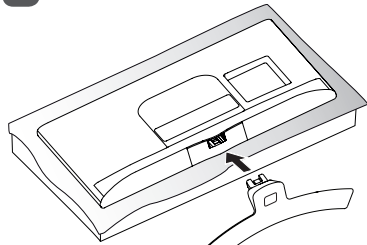
العربية



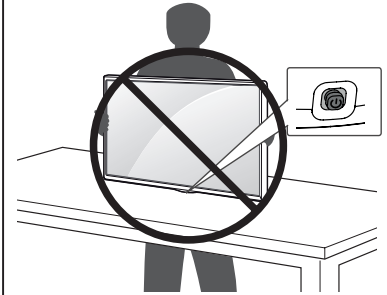
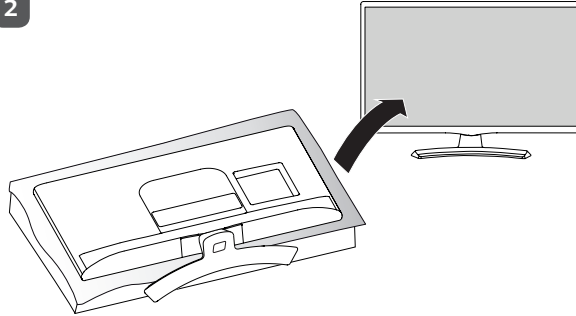


24/28MT49*

1

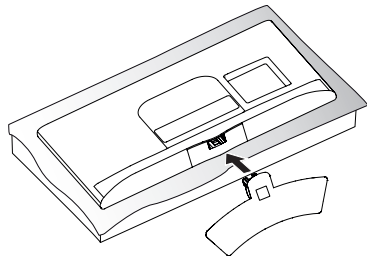


2

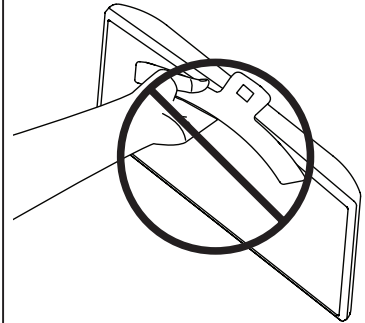
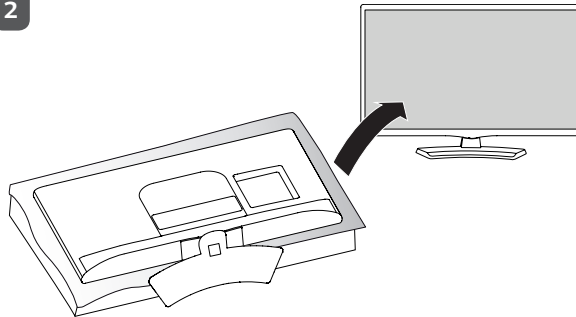


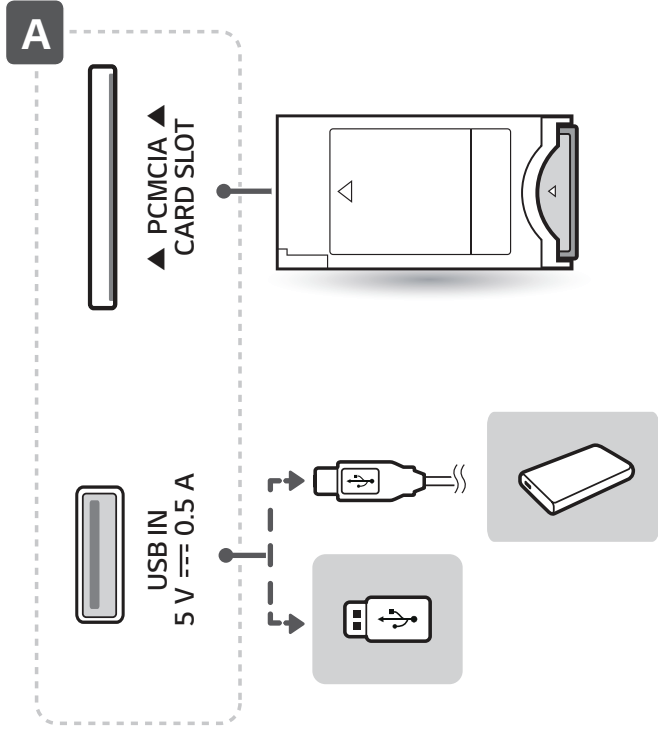
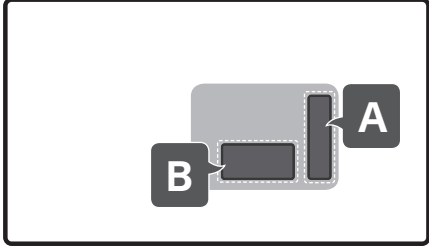
22/29MT49*

1



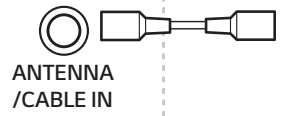
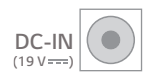
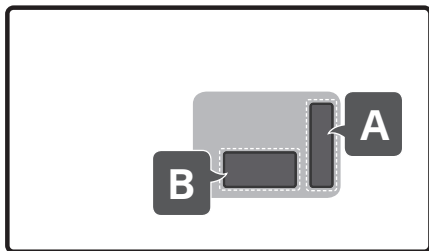
2







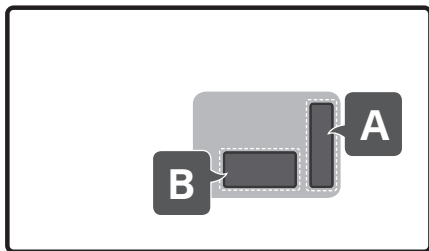
B-1 MT49DF





B-2

MT49VF / MT49VW / MT49U

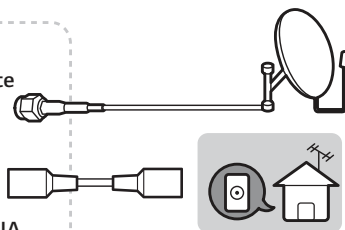


13/18 V
700 mA Max
LNB IN

Satellite

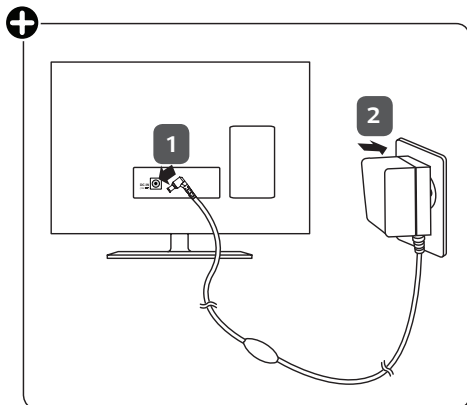
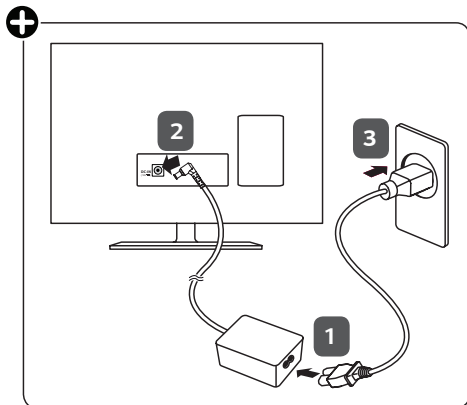


ANTENNA
/CABLE IN

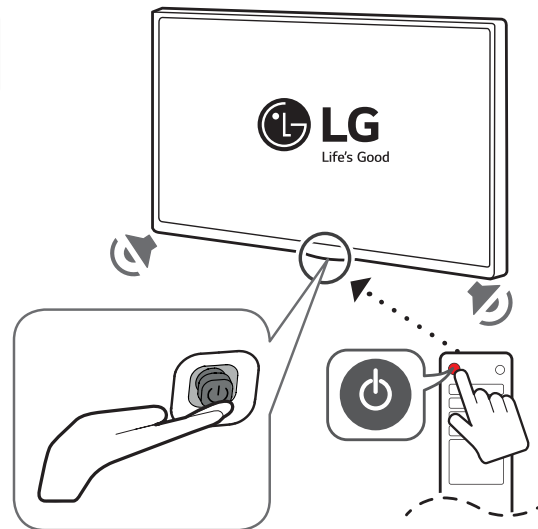
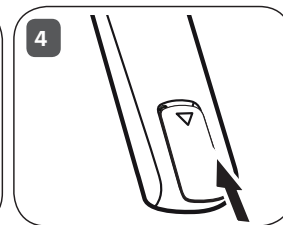
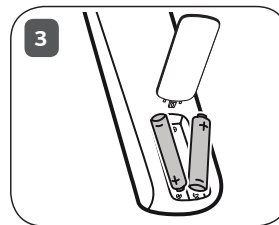
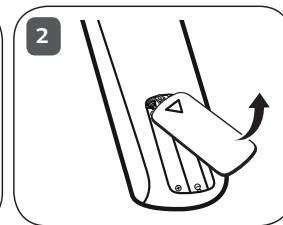
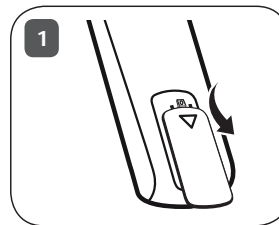




DC-IN
(19 V $\overline{=}$)



+ Depending on country







OWNER'S MANUAL

Safety and Reference

LED TV*

*Disclaimer

LG LED TV applies LCD screen with LED backlights.

Please read this manual carefully before operating your set and retain it for future reference.

MT49*

Table of contents

Licenses -----	3
Open source software notice information -----	3
Preparing -----	3
Lifting and moving the TV -----	4
Setting up the TV -----	4
Using the joystick button -----	4
Mounting on a table -----	5
Mounting on a wall -----	6
Connections (notifications) -----	7
Remote control -----	8
Settings -----	10
To see web manual -----	15
Maintenance -----	16
Troubleshooting -----	16
Specifications -----	17

Licenses

Supported licenses may differ by model. For more information about licenses, visit www.lg.com.



Manufactured under license from Dolby Laboratories. Dolby, Dolby Vision, Dolby Audio, and the double-D symbol are trademarks of Dolby Laboratories.



The terms HDMI and HDMI High-Definition Multimedia Interface, and the HDMI logo are trademarks or registered trademarks of HDMI Licensing LLC in the United States and other countries.



This DivX Certified® device has passed rigorous testing to ensure it plays DivX® video.

To play purchased DivX movies, first register your device at vod.divx.com. Find your registration code in the DivX VOD section of your device setup menu.

DivX Certified® to play DivX® video up to HD 1080p, including premium content.

DivX®, DivX Certified® and associated logos are trademarks of DivX, LLC and are used under license.

Covered by DivX Patents 7,295,673; 7,515,710; RE45,052; and others available at [www.divx.com/patents]

Open source software notice information

To obtain the source code under GPL, LGPL, MPL, and other open source licenses, that is contained in this product, please visit <http://opensource.lge.com>.

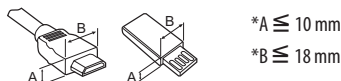
In addition to the source code, all referred license terms, warranty disclaimers and copyright notices are available for download.

LG Electronics will also provide open source code to you on CD-ROM for a charge covering the cost of performing such distribution (such as the cost of media, shipping, and handling) upon email request to opensource@lge.com. This offer is valid for three (3) years from the date on which you purchased the product.

Preparing

NOTE

- Image shown may differ from your TV.
- Your TV's OSD (On Screen Display) may differ slightly from that shown in this manual.
- The available menus and options may differ from the input source or product model that you are using.
- New features may be added to this TV in the future.
- The TV can be placed in standby mode in order to reduce the power consumption. And the TV should be turned off if it will not be watched for some time, as this will reduce energy consumption.
- The energy consumed during use can be significantly reduced if the level of brightness of the picture is reduced, and this will reduce the overall running cost.
- The items supplied with your product may vary depending on the model.
- Product specifications or contents of this manual may be changed without prior notice due to upgrade of product functions.
- For an optimal connection, HDMI cables and USB devices should have bezels less than 10 mm thick and 18 mm width. Use an extension cable that supports USB 2.0 if the USB cable or USB memory stick does not fit into your TV's USB port.



*A ≤ 10 mm

*B ≤ 18 mm

- Use a certified cable with the HDMI logo attached. If you do not use a certified HDMI cable, the screen may not display or a connection error may occur.
- Recommended HDMI cable types
 - High-Speed HDMI®/™ cable
 - High-Speed HDMI®/™ cable with Ethernet

CAUTION

- Do not use any unapproved items to ensure the safety and product life span.
- Any damage or injuries caused by using unapproved items are not covered by the warranty.
- Some models have a thin film attached on to the screen and this must not be removed.

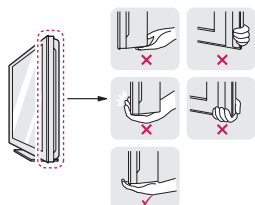
Lifting and moving the TV

Please note the following advice to prevent the TV from being scratched or damaged and for safe transportation regardless of its type and size.

- It is recommended to move the TV in the box or packing material that the TV originally came in.
- Before moving or lifting the TV, disconnect the power cord and all cables.
- When holding the TV, the screen should face away from you to avoid damage.



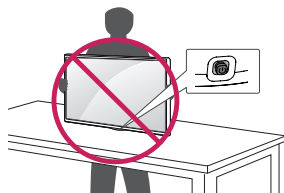
- Hold the top and bottom of the TV frame firmly. Make sure not to hold the transparent part, speaker, or speaker grill area.



- When transporting the TV, do not expose the TV to jolts or excessive vibration.
- When transporting the TV, keep the TV upright, never turn the TV on its side or tilt towards the left or right.
- Do not apply excessive pressure to cause flexing/bending of frame chassis as it may damage screen.

⚠ CAUTION

- Avoid touching the screen at all times, as this may result in damage to the screen.
- When handling the TV, be careful not to damage the protruding joystick button. (Depending on model)



Setting up the TV

⚠ CAUTION

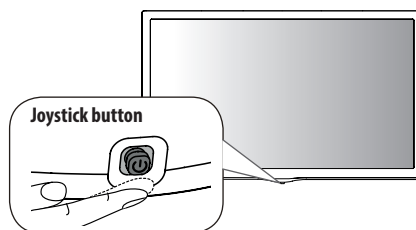
- When attaching the stand to the TV set, place the screen facing down on a cushioned table or flat surface to protect the screen from scratches.
- Do not carry the TV upside-down by holding the stand body (or stand base) as this may cause it to fall off, resulting in damage or injury.
- Do not apply foreign substances (oils, lubricants, etc.) to the screw parts when assembling the product. (Doing so may damage the product.)

! NOTE

- Lift up the latch at the bottom of the stand base and detach the stand base from the TV. (Only MT49*F, MT49*W, MT49U)
- Remove the stand before installing the TV on a wall mount by performing the stand attachment in reverse. (Only MT49*T)

Using the joystick button

You can simply operate the TV functions, pressing or moving the button.







Basic functions

	Power On (Press) Power Off (Press and hold) ¹
	Volume Control
	Programmes Control

- 1 If the menu button is on the screen, pressing and holding the button will let you exit the menu.

Adjusting the menu

When the TV is turned on, press the joystick button one time. You can adjust the menu items pressing or moving the buttons.

	Turns the power off.
	Clears on-screen displays and returns to TV viewing.
	Changes the input source.
	Accesses the setting menu.

! NOTE

- If you press the joystick button first, you may not be able to adjust the volume level and saved programmes.

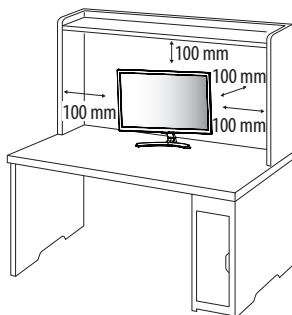
! CAUTION

- When your finger over the joystick button and push it to the up, down, left or right, be careful not to press the joystick button.

Mounting on a table

- Image shown may differ from your TV.

- 1 Lift and tilt the TV into its upright position on a table.
 - Leave a 100 mm (minimum) space from the wall for proper ventilation.



- 2 Connect the AC-DC Adapter and power cord to a wall outlet.

! CAUTION

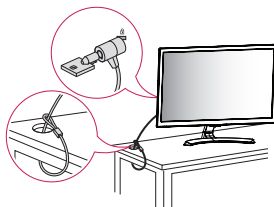
- Do not place the TV near or on sources of heat, as this may result in fire or other damage.
- Please be sure to connect the TV to the AC/DC power adapter before connecting the TV's power plug to a wall power outlet.

Using the kensington security system

(This is not available for all models.)

- Image shown may differ from your TV.

The Kensington security system connector is located at the rear of the TV. For more information of installation and using, refer to the manual provided with the Kensington security system or visit <http://www.kensington.com>. Connect the Kensington security system cable between the TV and a table.

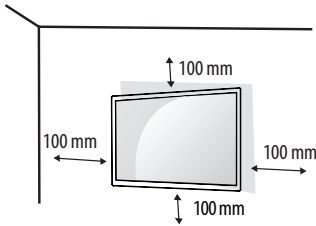


! NOTE

- The Kensington security system is optional. You can obtain additional accessories from most electronics stores.

Mounting on a wall

For proper ventilation, allow a clearance of 100 mm on each side and from the wall. Detailed installation instructions are available from your dealer, see the optional Tilt Wall Mounting Bracket Installation and Setup Guide.



If you intend to mount the TV to a wall, attach Wall mounting interface (optional parts) to the back of the TV.

When you install the TV using the wall mounting interface (optional parts), attach it carefully so it will not drop.

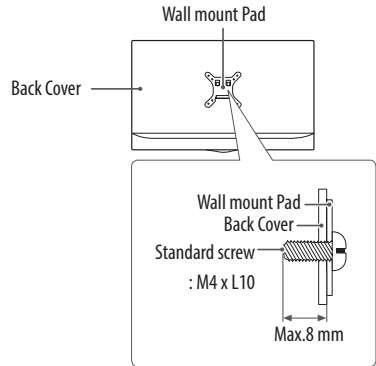
- 1 If you use screw longer than standard, the TV might be damaged internally.
- 2 If you use improper screw, the product might be damaged and drop from mounted position. In this case, LG Electronics is not responsible for it.

Separate purchase (Wall mounting bracket)

Model	22/24MT49*	28/29MT49*
Wall mount (A x B) (mm)	75 x 75	100 x 100
Standard screw	M4 x L10	
Number of screws	4	
Wall mount bracket (optional)	RW120	

⚠ CAUTION

- Must use the enclosed screw in the box. (Depending on model)
- Disconnect the power first, and then move or install the TV. Otherwise electric shock may occur.
- If you install the TV on a ceiling or slanted wall, it may fall and result in severe injury.
- Use an authorized LG wall mount and contact the local dealer or qualified personnel.
- Do not over tighten the screws as this may cause damage to the TV and void your warranty.
- Use the screws and wall mounts that meet the VESA standard. Any damages or injuries by misuse or using an improper accessory are not covered by the warranty.
- Screw length from outer surface of back cover should be under 8 mm.



ⓘ NOTE

- Use the screws that are listed on the VESA standard screw specifications.
- The wall mount kit includes an installation manual and necessary parts.
- The wall mount bracket is optional. You can obtain additional accessories from your local dealer.
- The length of screws may differ depending on the wall mount. Be sure to use the proper length.
- For more information, refer to the instructions supplied with the wall mount.

Connections (notifications)

Connect various external devices to the TV and switch input modes to select an external device. For more information about an external device's connection, refer to the manual supplied with each device. Available external devices are: HD receivers, DVD players, VCRs, audio systems, USB storage devices, PC, gaming devices, and other external devices.

! NOTE

- The external device connection may differ from the model.
- Connect external devices to the TV regardless of the order of the TV port.
- If you record a TV programme on a DVD recorder or VCR, make sure to connect the TV signal input cable to the TV through a DVD recorder or VCR. For more information of recording, refer to the manual provided with the connected device.
- Refer to the external equipment's manual for operating instructions.
- If you connect a gaming device to the TV, use the cable supplied with the gaming device.
- In PC mode, there may be noise associated with the resolution, vertical pattern, contrast or brightness. If noise is present, change the PC output to another resolution, change the refresh rate to another rate or adjust the brightness and contrast on the **Picture** menu until the picture is clear.
- In PC mode, some resolution settings may not work properly depending on the graphics card.

Antenna connection

Connect the TV to a wall antenna socket with an RF cable (75 Ω).

- Use a signal splitter to use more than 2 TVs.
- If the image quality is poor, install a signal amplifier properly to improve the image quality.
- If the image quality is poor with an antenna connected, try to realign the antenna in the correct direction.
- An antenna cable and converter are not supplied.
- Supported DTV Audio : MPEG, Dolby Digital, Dolby Digital Plus, HE-AAC

Satellite dish connection

(Only satellite models)

Connect the TV to a satellite dish to a satellite socket with a satellite RF cable (75 Ω).

CI module connection

(Depending on model)

View the encrypted (pay) services in digital TV mode.

- Check if the CI module is inserted into the PCMCIA card slot in the right direction. If the module is not inserted properly, this can cause damage to the TV and the PCMCIA card slot.
- If the TV does not display any video and audio when CI+ CAM is connected, please contact to the Terrestrial/Cable/Satellite Service Operator.

Other connections

Connect your TV to external devices. For the best picture and audio quality, connect the external device and the TV with the HDMI cable. Some separate cable is not provided.

- USB port supports 0.5 A electric current. If you need more electric current in case of HDD, use the separate power adaptor.

! NOTE

- Supported HDMI Audio format :
Dolby Digital / Dolby Digital Plus (32 KHz, 44.1 KHz, 48 KHz),
PCM (32 KHz, 44.1 KHz, 48 KHz, 96 KHz, 192 KHz)
(Depending on model)

Connecting to a PC

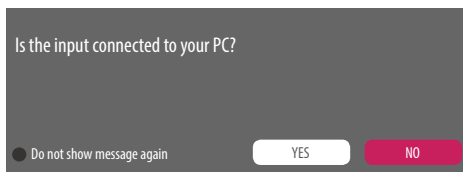
- Image shown may differ from your TV.

Your TV supports the Plug and Play* feature and has the built-in speakers with Virtual Surround that reproduces sound clearly with a rich bass.

* Plug and Play : The function when a PC recognizes a connected device that users connect to a PC and turn on, without device configuration or user intervention.

! NOTE

- If you want to use HDMI-PC mode, you must set the **Input Label** to **PC** mode.
- The OSD (On Screen Display) is displayed on the screen as shown below.
 - » When turning the product on in **HDMI** input.
 - » When switching to **HDMI** input.



- If you select "**YES**" the size and image quality are optimised for your PC.
- If you select "**NO**" the size and image quality are optimised for the AV device (DVD player, set-top box).
- If you select "**Do not show message again**" this message does not appear until the TV is reset. You can change the set value in (Home) ⇒ **Inputs** ⇒ **Input Label**.

Remote control

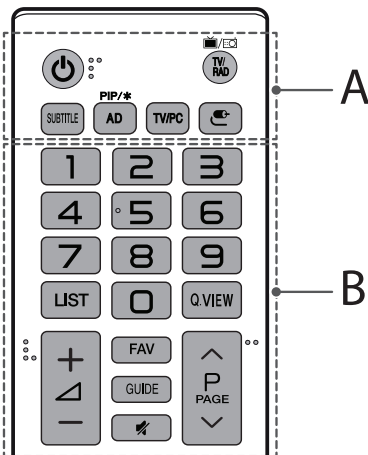
The descriptions in this manual are based on the buttons on the remote control. Please read this manual carefully and use the TV correctly.

To replace batteries, open the battery cover, replace batteries (1.5 V AAA) matching the ⊕ and ⊖ ends to the label inside the compartment, and close the battery cover. To remove the batteries, perform the installation actions in reverse.

⚠ CAUTION

- Do not mix old and new batteries, as this may damage the remote control.
- The remote control will not be included for all sales market.

Make sure to point the remote control toward the remote control sensor on the TV.



A

(**Power**) Turns the TV on or off.

TV/RAD Selects Radio, TV and DTV programme.

SUBTITLE Recalls your preferred subtitle in digital mode.

PIP/* Turns the PIP mode on or off. (Depending on model)

AD Audio descriptions function will be enabled.

TV/PC Selects TV or PC mode.

(**Inputs**) Changes the input source.

B

Number buttons Enters numbers.

LIST Accesses the saved programme list.

Q.VIEW Returns to the previously viewed programme.

+ ◁ — Adjusts the volume level.

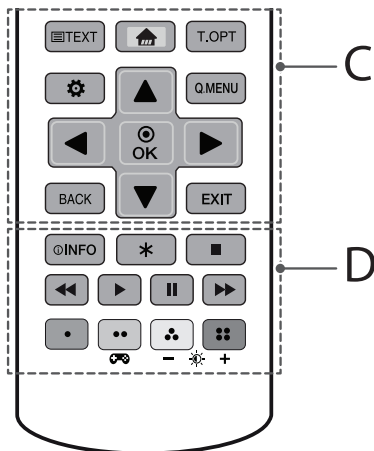
FAV Accesses your favourite programme list.

GUIDE Shows programme guide.

🔇 **(Mute)** Mutes all sounds.

^ P v Scrolls through the saved programmes.

^ PAGE v Moves to the previous or next screen.

**C**

Teletext buttons (≡ **TEXT** / **T.OPT**) These buttons are used for teletext.

🏠 **(Home)** Accesses the home menu.

⚙️ **(Settings)** Accesses the settings menu.

Q.MENU Accesses the quick menus.

▲, ▼, ◀, ▶ **(Navigation buttons)** Scrolls through menus or options.

⊙ **OK** Selects menus or options and confirms your input.

BACK Returns to the previous level.

EXIT Clears on-screen displays and returns to TV viewing.

D

ⓘ **INFO** Views the information of the current programme and screen.

* Not functional.

■, ◀, ▶, ⏸, ▶▶ **(Control buttons)** Controls media contents.

•, ••, •••, •••• These access special functions in some menus.

🎮 **(Gaming Mode)** Turns the gaming mode on or off.

— ☀️ + **(Backlight)** Adjusts the brightness of the screen by controlling the screen backlight.

! NOTE

- On MHEG programme, you cannot adjust the backlight with the yellow or blue key.

Settings

Automatically Setting Up Programme

⚙️ (Settings) ⇨ Programmes ⇨ Auto Tuning

Automatically tunes the programmes.



- If Input Source is not connected properly, programme registration may not work.
- **Auto Tuning** only finds programmes that are currently broadcasting.
- If **Lock System** is turned on, a pop-up window will appear asking for password.

To select Picture Mode

⚙️ (Settings) ⇨ Picture ⇨ Picture Mode Settings ⇨

Picture Mode

Select the picture mode optimized for the viewing environment or the programme.

- **Vivid** : Heightens contrast, brightness and sharpness to display vivid images.
- **Standard** : Displays images in standard levels of contrast, brightness and sharpness.
- **Eco/APS** : [Depending on model]
The Energy Saver feature changes settings on the TV to reduce power consumption.
- **Cinema/Game** : Displays the optimum picture for movie, game.
- **Sports** : [Depending on model]
Optimised picture mode for sport. The pitch and kits are presented in vibrant colours, with crystal-clear images even for fast movements.
-  **Expert1, 2** : Menu for adjusting picture quality that allows experts and amateurs to enjoy the best TV viewing. This is the adjustment menu provided for ISF-certified picture tuning professionals. (ISF logo can only be used on ISF-certified TVs.)
ISFccc: Imaging Science Foundation Certified Calibration Control
- Depending on input signal, available range of picture modes may differ.
-  **Expert mode** is for picture tuning professionals to control and fine-tune using a specific image. For normal images, the effects may not be dramatic.
- The ISF function is only available on some models.
- Changing **Picture Mode** may modify **Energy Saving** and **Motion Eye Care** settings, which can also affect energy consumption.

Fine-tuning Picture Mode

⚙️ (Settings) ⇨ Picture ⇨ Picture Mode Settings

This feature allows you to adjust the selected picture mode in detail.

- **Backlight** : Controls the level of screen brightness by adjusting the backlight. The closer to 100, the brighter the screen.
- **Contrast** : Adjusts the contrast of the bright and dark areas of the picture. The closer to 100, the higher the contrast.
- **Brightness** : Adjusts the overall screen brightness. The closer to 100, the brighter the screen.
- **Sharpness** : Adjusts the sharpness of the image. The closer to 50, the sharper and clearer the image.
- **Colour** : Tones down or up the colours displayed on the screen. The closer to 100, the deeper the colour.
- **Tint** : Adjusts the colour balance between red and green displayed on the screen. The closer to Red 50, the more red the colour will be. The closer to Green 50, the more green the colour will be.
- **Colour Temperature** : Adjusts the colour temperature from cold to warm.
- Depending on input signal or other picture settings, the range of detailed items for adjustment may differ.

To set advanced control

⚙️ (Settings) ⇨ Picture ⇨ Picture Mode Settings

⇨ Advanced Control / Expert Control

Calibrates the screen for each picture mode; or adjusts picture settings for a special screen.

- **Dynamic Contrast** : Adjusts the contrast to the optimal level according to the brightness of the image.
- **Dynamic Colour** : Adjusts colours to make the image appear in more natural colours.
- **Preferred Colour** : Adjust the colours of skin, grass and sky to your personal preferences.
- **Gamma** : Sets the gradation curve according to the output of picture signal in relation to the input signal.
- **Colour Gamut** : Selects the range of colours that can be expressed.
- **Edge Enhancer** : Shows clearer and distinctive yet natural edges of the video.
- **Colour Filter** : Filters a specific colour spectrum in RGB colours to fine-tune colour saturation and hue accurately.
- **White Balance** : Adjusts the overall tone of the screen as desired.
- **Colour Management System** : This is a system that experts use when they adjust colour with a test pattern. They can select from six colour areas (Red / Green / Blue / Cyan / Magenta / Yellow) without affecting other colours. For normal images, adjustments may not result in noticeable colour changes.
- Depending on input signal or other picture settings, the range of detailed items for adjustment may differ.

To set additional picture options

⚙️ (Settings) ⇨ Picture ⇨ Picture Mode Settings
⇨ Picture Options

Adjusts detailed setting for images.

- **Noise Reduction** : Eliminates noise in the picture.
- **MPEG Noise Reduction** : Eliminates noise generated while creating digital picture signals.
- **Black Level** : Adjusts the brightness and contrast of the screen to suit the black level of the input picture by using the blackness (black level) of the screen.
- **Real Cinema** : Optimizes the screen for movie viewing.
- **Motion Eye Care** : Automatically adjusts brightness and reduces image blur based on image data to reduce eyestrain.
- Depending on input signal or other picture settings, the range of detailed items for adjustment may differ.

Resetting picture settings

⚙️ (Settings) ⇨ Picture ⇨ Picture Mode Settings
⇨ Picture Reset


Resets picture settings that the user customizes. Each picture mode is reset. Select the picture mode you wish to reset.

To use Gaming Mode

⚙️ (Settings) ⇨ Picture ⇨ Gaming Mode

[Available only for RGB/HDMI-PC]


This mode allows you to optimize the picture quality for games.

- **DAS Mode** : [Depending on model]
This mode minimizes the time taken to display the video signal received from the input device to ensure faster gameplay. (The screen will flicker when turning **DAS Mode On** or **Off**.)
- DAS : Dynamic Action Sync
- **Black Stabilizer** : Objects can be seen more clearly on a dark screen by adjusting the black levels. Increasing the **Black Stabilizer** value brightens the low gray levels on the screen. (You can easily distinguish objects on a dark game screen.) Reducing the **Black Stabilizer** value darkens the low gray levels and increases the dynamic contrast on the screen.
- You can configure the detailed settings for **Gaming Mode** using the  key on the remote control.
- You can set **DAS Mode** only when the frequency for vertical input is 50 Hz/60 Hz.
- When **PIP** is turned on, the **DAS Mode** is unavailable. (Depending on model)

To use Energy Saving feature

⚙️ (Settings) ⇨ Picture ⇨  Energy Saving

Reduces power consumption by adjusting screen brightness.

- **Off** : Turns off the Energy Saving mode.
- **Minimum / Medium / Maximum** : Applies the pre-set Energy Saving mode.
- **Screen Off** : Screen is turned off and only sound is played. Press any button except Power button on the remote control to turn the screen back on.
- Depending on the **Energy Saving (Maximum)**, you may not be able to adjust the **Backlight**.
In this case, navigate to ⚙️ (Settings) ⇨ Picture ⇨  Energy Saving and set to **Off** or **Minimum**.

To use Eye Comfort Mode feature

⚙️ (Settings) ⇨ Picture ⇨ Eye Comfort Mode

If you turn this option on, colour temperature will be automatically adjusted to reduce eye strain.

- **On** : Automatically adjusts the screen color temperature.
- **Off** : Turns off the **Eye Comfort Mode**.

Selecting Sound Mode

⚙️ (Settings) ⇨ Sound ⇨ Sound Mode Settings
⇨ Sound Mode

Adjusts TV audio to an optimal level based on a selected sound mode.

- **Standard** : Optimizes the sound for all types of content.
- **Clear Voice** : Boosts voice clarity from the TV.
- **Music** : [Depending on model] Optimizes the sound for music.
- **Cinema** : Optimizes the sound for cinemas.
- **Sports** : [Depending on model] Optimizes the sound for sports.
- **Game** : Optimizes the sound for gameplay.

Adjusting audio balance

⚙️ (Settings) ⇨ Sound ⇨ Sound Mode Settings
⇨ Balance

Adjust the volume of the left and right speakers.

Using the Sound Effect function

⚙️ (Settings) ⇨ Sound ⇨ Sound Mode Settings

The user can select various sound effects.

- **Virtual Surround** : Enjoy an immersive soundscape with the virtual multi-channel surround sound effect.
- **Equalizer** : Set the desired sound by adjusting the equalizer directly.
- **Reset** : Reset the sound effect settings.
- This is only available if **Sound Mode** is set to **Standard**.

To synchronize audio and video

⚙️ (Settings) ⇒ Sound ⇒ AV Sync Adjustment

[Depending on model]

Synchronizes video and audio directly when they do not match.

If you set **AV Sync Adjustment** to **On**, you can adjust the sound output (TV speakers) to the screen image.

- If you select the **Bypass**, Outputs the broadcast signals or the sound from external devices without any audio delay. The audio may be output before the video because of the time the TV takes to process the video input.

PIP Setting

⚙️ (Settings) ⇒ General ⇒ PIP

[Depending on model]

- **Mode** : Shows or hides the sub-screen.
- **Sub Input** : Select the input on the sub-screen.
- **Position** : Adjusts the position of the sub-screen.
- **Size** : Adjusts the size of the sub-screen.
- **Sound** : Switches to the main screen sound or the sub screen sound.
- The **PIP** function is only available in the following mode:

- Main : RGB-PC	Sub : DTV / ATV / HDMI
- Main : HDMI	Sub : DTV / ATV / Component
- The **PIP** settings can also be set using **Q.MENU**.
- Press the **PIP** button on the remote control to show or hide the sub-screen.
- The **PIP** function is not available when **SIMPLINK** is activated.

Setting USB AutoRun

⚙️ (Settings) ⇒ General ⇒ USB AutoRun


Play photos or videos of USB automatically when TV is turned on or USB is connected.

- **Off** : Turn off the **USB AutoRun**.
- **Videos** : Play videos of USB automatically.
- **Photos** : Play photos of USB automatically.
- Only plays the files in the top level folder of the USB device in sequence.
- While playing, press the **BACK** or **EXIT** button on the remote control to end this function.
- If the files are invalid or corrupted, the following message appears before returning to the previous input status: "This file is invalid."
- When the USB device is reconnected after being disconnected during video playback, Continue watching starts automatically and resumes the video from the last viewed scene (only applies to the first video).

To use SIMPLINK

[Depending on model]

SIMPLINK is a feature that enables you to control and manage various multimedia devices conveniently via the **SIMPLINK** menu.

- 1 Connect the TV's **HDMI IN** terminal and the **SIMPLINK** device's HDMI output terminal using an HDMI cable.
 - 2 Select **⚙️ (Settings) ⇒ General ⇒ SIMPLINK**.
SIMPLINK menu window appears.
 - 3 In **SIMPLINK** Setting window, set **SIMPLINK** function to **On**.
 - 4 Configure the **Auto Power Sync** settings to **On** or **Off**.
 - 5 In **SIMPLINK** menu window, selects the device you want to control.
- You can also set the **SIMPLINK** in  **(Home) ⇒ Inputs ⇒ SIMPLINK**.
 - This function is only compatible with devices with the **SIMPLINK** logo.
 - To use the **SIMPLINK** function, you need to use a high-speed HDMI® cable (with CEC (Consumer Electronics Control) feature added). High-speed HDMI® cables have the No. 13 pin connected for information exchange between devices.
 - If you switch to another input, the **SIMPLINK** device will stop.
 - If a third-party device with the HDMI-CEC function is also used, the **SIMPLINK** device may not work normally.
 - If you select or play media from a the device with a home theatre function, the **HT Speaker** is automatically connected.

SIMPLINK function description

- **Direct Play** : Plays the multimedia device on the TV instantly.
- **Controlling devices with the TV remote control** : Manages the multimedia device with the TV remote control.
- **Main Power Off** : If **Auto Power Sync** is set to **On** in the SIMPLINK settings and turn off your TV, the devices connected to your TV via SIMPLINK will also be turned off.
- **Main Power On** : If **Auto Power Sync** is set to **On** in the SIMPLINK settings, turning on a SIMPLINK-linked device will turn the TV on. (Behavior may vary depending on connected device.)

To set password

(Settings) ⇨ Safety ⇨ Set Password

Sets or changes the TV password.

- The initial password is set to '0000'.
- When France is selected for Country, password is not '0000' but '1234'.
- When France is selected for Country, password cannot be set to '0000'.

To return Reset to Initial Settings

(Settings) ⇨ General ⇨ Reset to Initial Settings

All stored information is deleted and TV settings are reset.

The TV turns itself off and back on, and all settings are reset.

- When **Lock System** is in place, a pop-up window appears and asks for password.
- Do not turn off the power during initialization.

To remove the USB device

Select the connected USB HDD from  (**Home**) ⇨ **Inputs** and select the **Eject** button to disconnect the USB HDD storage device. When you see a message that the USB device has been removed, separate the device from the TV.

- Once a USB device has been selected for removal, it can no longer be read. Remove the USB storage device and then re-connect it.

Using a USB storage device - warning

- If the USB storage device has a built-in auto recognition program or uses its own driver, it may not work.
- Some USB storage devices may not work or may work incorrectly.
- Use only USB storage devices formatted with the Windows FAT32 or NTFS File System.
- For external USB HDDs, it is recommended that you use devices with a rated voltage of less than 5 V and a rated current of less than 500 mA.
- It is recommended that you use USB memory sticks of 32 GB or less and USB HDDs of 2 TB or less.
- If a USB HDD with power-saving function does not work properly, turn the power off and on. For more information, refer to the user manual of the USB HDD.
- Data in the USB storage device can be damaged, so be sure to back up important files to other devices. Data maintenance is the user's responsibility and the manufacturer is not responsible for data loss.

My Media supporting file

- Maximum data transfer rate: 20 Mbps (Mega bit per second)
- External supported subtitle formats : *.smi, *.srt, *.sub (MicroDVD, SubViewer1.0/2.0), *.ass, *.ssa, *.txt (TMplayer), *.psb (PowerDivX)
- Internal supported subtitle formats: XSUB (Supports internal subtitles generated from DivX6)

Supported Video Formats

- Maximum : 1920 x 1080 @ 30p (Only Motion JPEG 640 x 480 @ 30p)
- .asf, .wmv
[Video] MPEG-4 Part2, XViD, H.264/AVC, VC1(WMV3, WVC1), MP43
[Audio] WMA Standard, WMA9(Pro), MP3, AAC, AC3
- .divx, .avi
[Video] MPEG-2, MPEG-4 Part2, DivX3.11, DivX4, DivX5, DivX6, XViD, H.264/AVC
[Audio] HE-AAC, LPCM, ADPCM, MPEG-1 Layer I, MPEG-1 Layer II, Dolby Digital, MPEG-1 Layer III (MP3)
- .ts, .trp, .tp, .mts, .m2ts
[Video] H.264/AVC, MPEG-2, H.265/HEVC
[Audio] MPEG-1 Layer I, MPEG-1 Layer II, MPEG-1 Layer III (MP3), Dolby Digital, Dolby Digital Plus, AAC, HE-AAC
- .vob
[Video] MPEG-1, MPEG-2
[Audio] Dolby Digital, MPEG-1 Layer I, MPEG-1 Layer II, DVD-LPCM
- .mp4, .m4v, .mov
[Video] MPEG-2, MPEG-4 Part2, DivX3.11, DivX4, DivX5, DivX6, XViD, H.264/AVC
[Audio] AAC, MPEG-1 Layer III (MP3)
- .mkv
[Video] MPEG-2, MPEG-4 Part2, XViD, H.264/AVC
[Audio] HE-AAC, Dolby Digital, MPEG-1 Layer III (MP3), LPCM
- motion JPEG
[Video] MJPEG
[Audio] LPCM, ADPCM
- .mpg, .mpeg, .mpe
[Video] MPEG-1, MPEG-2
[Audio] MPEG-1 Layer I, MPEG-1 Layer II, Dolby Digital, LPCM
- .dat
[Video] MPEG-1, MPEG-2
[Audio] MP2
- .flv
[Video] Sorenson H.263, H.264/AVC
[Audio] MP3, AAC, HE-AAC
- .3gp
[Video] H.264/AVC, MPEG-4 Part2
[Audio] AAC, AMR(NB/WB)

Supported Audio Formats

- File type : mp3
[Bit rate] 32 Kbps ~ 320 Kbps
[Sample freq.] 16 kHz ~ 48 kHz
[Support] MPEG1, MPEG2, Layer2, Layer3
- File Type : AAC
[Bit rate] Free Format
[Sample freq.] 8 kHz ~ 48 kHz
[Support] ADIF, ADTS
- File Type : M4A
[Bit rate] Free Format
[Sample freq.] 8 kHz ~ 48 kHz
[Support] MPEG-4
- File Type : WMA
[Bit rate] 128 Kbps ~ 320 Kbps
[Sample freq.] 8 kHz ~ 48 kHz
[Support] WMA7, WMA8, WMA9 Standard
- File Type : WMA10 Pro
[Bit rate] ~ 768 Kbps
[Channel / Sample freq.]
M0 : up to 2 Channel @ 48 kHz
(Except LBR mode),
M1 : up to 5.1 Channel @ 48 kHz,
M2 : up to 5.1 Channel @ 96 kHz
[Support] WMA10 Pro
- File Type : OGG
[Bit rate] Free Format
[Sample freq.] 8 kHz ~ 48 kHz
[Support] OGG Vorbis
- File Type : WAV
[Bit rate] 64 kbps ~ 1.5 Mbps
[Sample freq.] 8 kHz ~ 48 kHz
[Support] LPCM
[Bit depth] 8 bit / 16 bit / 24 bit

Supported Photo Formats

- Category : 2D (jpeg, jpg, jpe)
[Available file type]
SOF0 : Baseline,
SOF1 : Extend Sequential,
SOF2 : Progressive
[Photo size]
Minimum : 64 x 64,
Maximum (Normal Type) : 15360 x 8640,
Maximum (Progressive Type) : 1920 x 1440
- Category : BMP
[Photo size] Minimum : 64 x 64, Maximum : 9600 x 6400
- Category : PNG
[Available file type] Interlace, Non-Interlace
[Photo size]
Minimum : 64 x 64,
Maximum (Interlace) : 1200 x 800,
Maximum (Non-Interlace) : 9600 x 6400
- BMP and PNG format files may be slower to display than JPEG.

To see web manual

To obtain detailed User Guide information, please visit www.lg.com.

Maintenance

Cleaning your TV

Clean your TV regularly to keep the best performance and to extend the product lifespan.

- Make sure to turn the power off and disconnect the power cord and all other cables first.
- When the TV is left unattended and unused for a long time, disconnect the power cord from the wall outlet to prevent possible damage from lightning or power surges.

Screen, frame, cabinet and stand

To remove dust or light dirt, wipe the surface with a dry, clean, and soft cloth.

To remove major dirt, wipe the surface with a soft cloth dampened in clean water or a diluted mild detergent. Then wipe immediately with a dry cloth.

- Avoid touching the screen at all times, as this may result in damage to the screen.
- Do not push, rub, or hit the screen surface with your fingernail or a sharp object, as this may result in scratches and image distortions.
- Do not use any chemicals as this may damage the product.
- Do not spray liquid onto the surface. If water enters the TV, it may result in fire, electric shock, or malfunction.

Power cord

Remove the accumulated dust or dirt on the power cord regularly.

Preventing “Image burn” or “Burn-in” on your TV screen

- If a fixed image displays on the TV screen for a long period of time, it will be imprinted and become a permanent disfigurement on the screen. This is “image burn” or “burn-in” and not covered by the warranty.
- If the aspect ratio of the TV is set to 4:3 for a long period of time, image burn may occur on the letterboxed area of the screen.
- Avoid displaying a fixed image on the TV screen for a long period of time (2 or more hours for LCD) to prevent image burn.

Troubleshooting

Cannot control the TV with the remote control.

- Check the remote control sensor on the product and try again.
- Check if there is any obstacle between the product and the remote control.
- Check if the batteries are still working and properly installed (⊕ to ⊕, ⊖ to ⊖).

No image display and no sound is produced.

- Check if the product is turned on.
- Check if the power cord is connected to a wall outlet.
- Check if there is a problem in the wall outlet by connecting other products.

The TV turns off suddenly.

- Check the power control settings. The power supply may be interrupted.
- Check if the **Auto Power Off** (Depending on model) / **Sleep Timer** / **Timer Power Off** feature is activated in the **Timers** settings.
- If there is no signal while the TV is on, the TV will turn off automatically after 15 minutes of inactivity.

When connecting to the PC (HDMI), 'No Signal', 'Check signal cable' or 'Unsupported Format' is displayed.

- Turn the TV off/on using the remote control.
- Reconnect the HDMI cable.
- Restart the PC with the TV on.

If TV is turned off automatically.

- If **Timer Power On** is enabled, the TV will be turned on at the specified time. If you do not operate the TV for two hours, the TV will be turned off automatically.
- To disable this function, use your remote control to go to **⚙️ (Settings) ⇨ Timers ⇨ Timer Power On ⇨ 2 Hours Auto Power Off ⇨ Off**.

Specifications

Product specifications may be changed without prior notice due to upgrade of product functions.

Models	Dimensions (W x H x D) (mm)		Weight (kg)		Power consumption (Outgoing condition)	Power requirement
	With stand	Without stand	With stand	Without stand		
22MT49DF 22MT49VF	507.6 x 358.0 x 146.3	507.6 x 316.5 x 52.7	3.0	2.9	26 W	19V $\overline{\text{---}}$ 1.6 A
24MT49DF 24MT49VF 24MT49VW 24MT49U	556 x 392.7 x 143.4	556 x 345.2 x 54.7	3.5	3.2	28 W	19V $\overline{\text{---}}$ 1.6 A
24MT49DT 24MT49VT	556 x 376.5 x 130.5	556 x 345.2 x 54.7	3.3	3.2	28 W	19V $\overline{\text{---}}$ 1.6 A
28MT49DF 28MT49VF 28MT49VW 28MT49U	641.5 x 444.0 x 178.8	641.5 x 396.3 x 59.5	5.0	4.5	28 W	19V $\overline{\text{---}}$ 1.6 A
28MT49DT 28MT49VT	641.5 x 428.7 x 159.2	641.5 x 396.3 x 59.5	4.6	4.5	28 W	19V $\overline{\text{---}}$ 1.6 A
29MT49DF 29MT49VF	665.8 x 444.5 x 186.1	665.8 x 405.5 x 61.4	4.8	4.6	33 W	19V $\overline{\text{---}}$ 2.0 A

AC/DC Adapter	22/24/28MT49*	29MT49*
	Manufacturer : Lien Chang Model : LCAP16A-E, LCAP21A Manufacturer : Honor Model : ADS-40FSG-19 19032GPG, ADS-40SG-19-3 19032G	Manufacturer : Lien Chang Model : LCAP16B-E, LCAP21C Manufacturer : Honor Model : ADS-45FSN-19 19040GPG, ADS-45SN-19-3 19040G
	In : AC 100 – 240 V ~ 50/60 Hz Out : DC 19V $\overline{\text{---}}$ 1.7 A	In : AC 100 – 240 V ~ 50/60 Hz Out : DC 19V $\overline{\text{---}}$ 2.1 A

CI module Size (W x H x D)	100.0 mm x 55.0 mm x 5.0 mm
----------------------------	-----------------------------

Environment condition	Operating Temperature	0 °C to 40 °C
	Operating Humidity	Less than 80 %
	Storage Temperature	-20 °C to 60 °C
	Storage Humidity	Less than 85 %

(Depending on country)

	Digital TV			Analogue TV
	Satellite	Terrestrial	Cable	Terrestrial / Cable
Television system	DVB-S/S2*	DVB-T DVB-T2*	DVB-C	PAL/SECAM B/G, D/K, I, SECAM L
Channel coverage (Band)	950 ~ 2150 Mhz	VHF III : 174 ~ 230 Mhz UHF IV : 470 ~ 606 Mhz UHF V : 606 ~ 862 Mhz S Band II : 230 ~ 300 Mhz S Band III : 300 ~ 470 Mhz	46 ~ 890 Mhz	46 ~ 862 Mhz
Maximum number of storable programmes	6000	2000		
External antenna impedance	75 Ω			

* Only DVB-T2/C/S2 support models.

HDMI-PC supported mode**24/28/29MT49***

Resolution	Horizontal frequency(kHz)	Vertical frequency(Hz)
720 x 400	31.468	70.080
640 x 480	31.469	59.940
	37.500	75.000
800 x 600	37.879	60.317
	46.875	75.000
1024 x 768	48.363	60.004
	60.023	75.029
1280 x 800	49.702	59.810
1366 x 768	47.717	59.790

22MT49*

Resolution	Horizontal frequency(kHz)	Vertical frequency(Hz)
720 x 400	31.468	70.080
640 x 480	31.469	59.940
	37.500	75.000
800 x 600	37.879	60.317
	46.875	75.000
1024 x 768	48.363	60.004
	56.476	70.069
	60.023	75.029
1152 x 864	67.500	75.000
1280 x 720	45.000	60.000
1280 x 800	49.702	59.810
1280 x 1024	63.981	60.020
	79.976	75.025
1400 x 1050	65.317	59.978
1440 x 900	55.935	59.887
1600 x 900	60.000	60.000
1680 x 1050	64.674	59.883
	65.290	59.954
1920 x 1080	67.500	60.000

! NOTE

- The optimal display resolution
 - 24/28/29MT49* : 1366 x 768 @ 60 Hz.
 - 22MT49* : 1920 x 1080 @ 60 Hz.
- The optimal timing in each mode is vertical frequency 60 Hz.

HDMI-DTV supported mode

Resolution	Horizontal frequency(kHz)	Vertical frequency(Hz)
720 x 480	31.469	59.940
	31.500	60.000
720 x 576	31.250	50.000
1280 x 720	37.500	50.000
	44.960	59.940
	45.000	60.000
1920 x 1080	33.720	59.940
	33.750	60.000
	28.125	50.000
	27.000	24.000
	33.750	30.000
	56.250	50.000
	67.430	59.940
	67.500	60.000


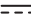




WARNING!

Never place a television set in an unstable location. A television set may fall, causing serious personal injury or death. Many injuries, particularly to children, can be avoided by taking simple precautions such as:

- Using cabinets or stands recommended by the manufacturer of the television set.
- Only using furniture that can safely support the television set.
- Ensuring the television set is not overhanging the edge of the supporting furniture.
- Not placing the television set on tall furniture (for example, cupboards or bookcases) without anchoring both the furniture and the television set to a suitable support.
- Not placing the television set on cloth or other materials that may be located between the television set and supporting furniture.
- Educating children about the dangers of climbing on furniture to reach the television set or its controls.

If your existing television set is being retained and relocated, the same considerations as above should be applied.

Symbols

	Refers to alternating current(AC).
	Refers to direct current(DC).
	Refers to class II equipment.
	Refers to stand-by.
	Refers to "ON" (power).
	Refers to dangerous voltage.



Record the model number and serial number of the TV.

Refer to the label on the back cover and quote this information to your dealer when requiring any service.

MODEL _____

SERIAL _____