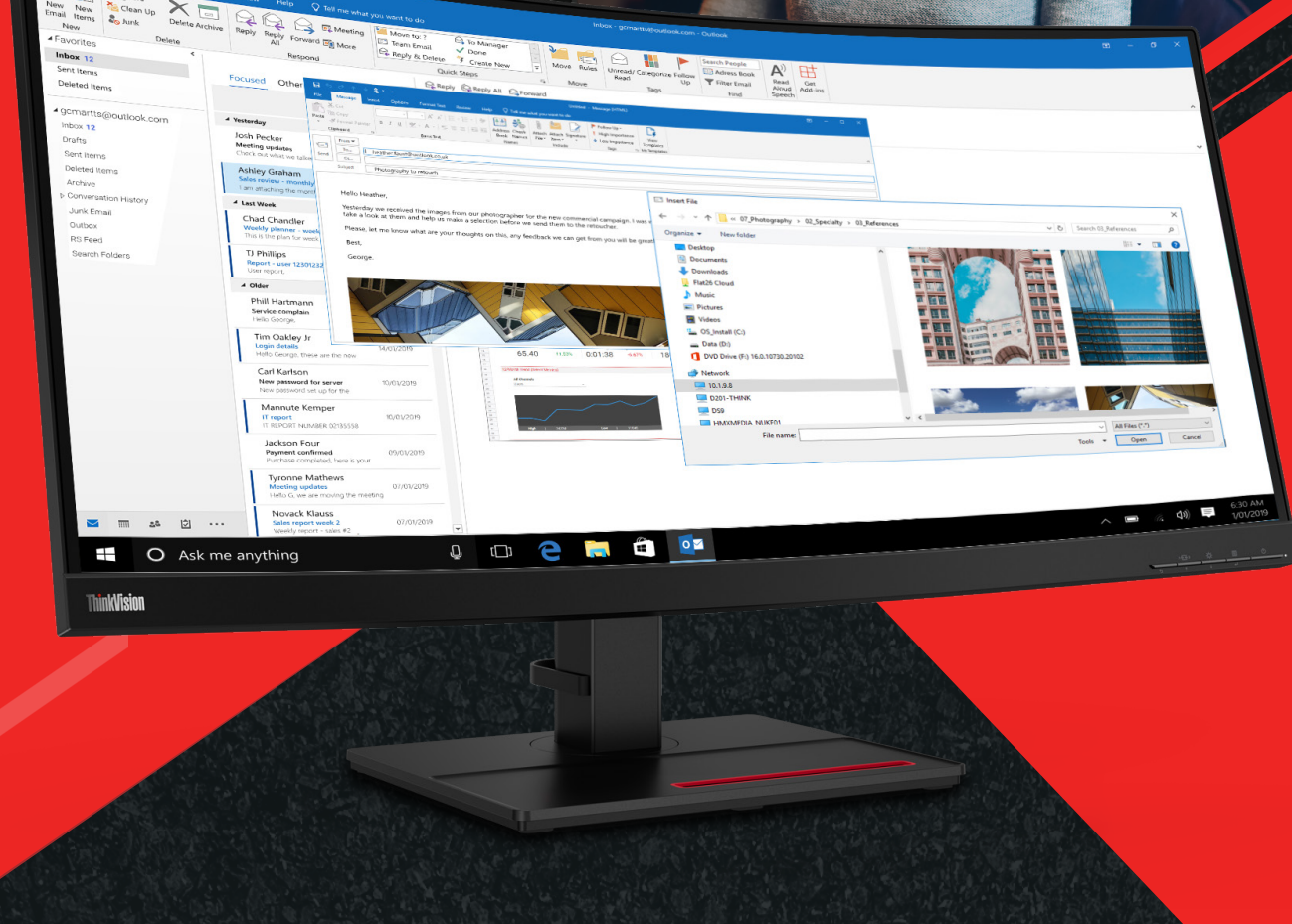
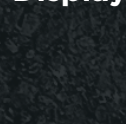


# ThinkVision T34w-20

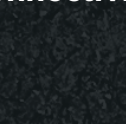


## SEE IT ALL ON THE PANORAMIC SCREEN

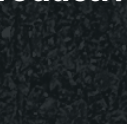
Make multitasking a breeze on the ThinkVision T34w-20 that is designed keeping workforce productivity in mind. This 34-inch WQHD resolution display allows you to conveniently carry out everyday tasks like number crunching and working on spreadsheets, with ease. Browse or work on multiple applications at once without missing a detail, thanks to its 21:9 industry-leading 1500R curved panel. The T34w-20's USB Type-C one-cable solution, a space-saving and cable management feature, optimizes your desk space and minimizes clutter, enabling efficient working. Its Smart Power function intelligently detects overall power consumption and dynamically manages the power delivery to each connected device. Additionally, this TÜV Rheinland Eye Comfort certified monitor reduces eye fatigue so you can achieve maximum productivity, every day.



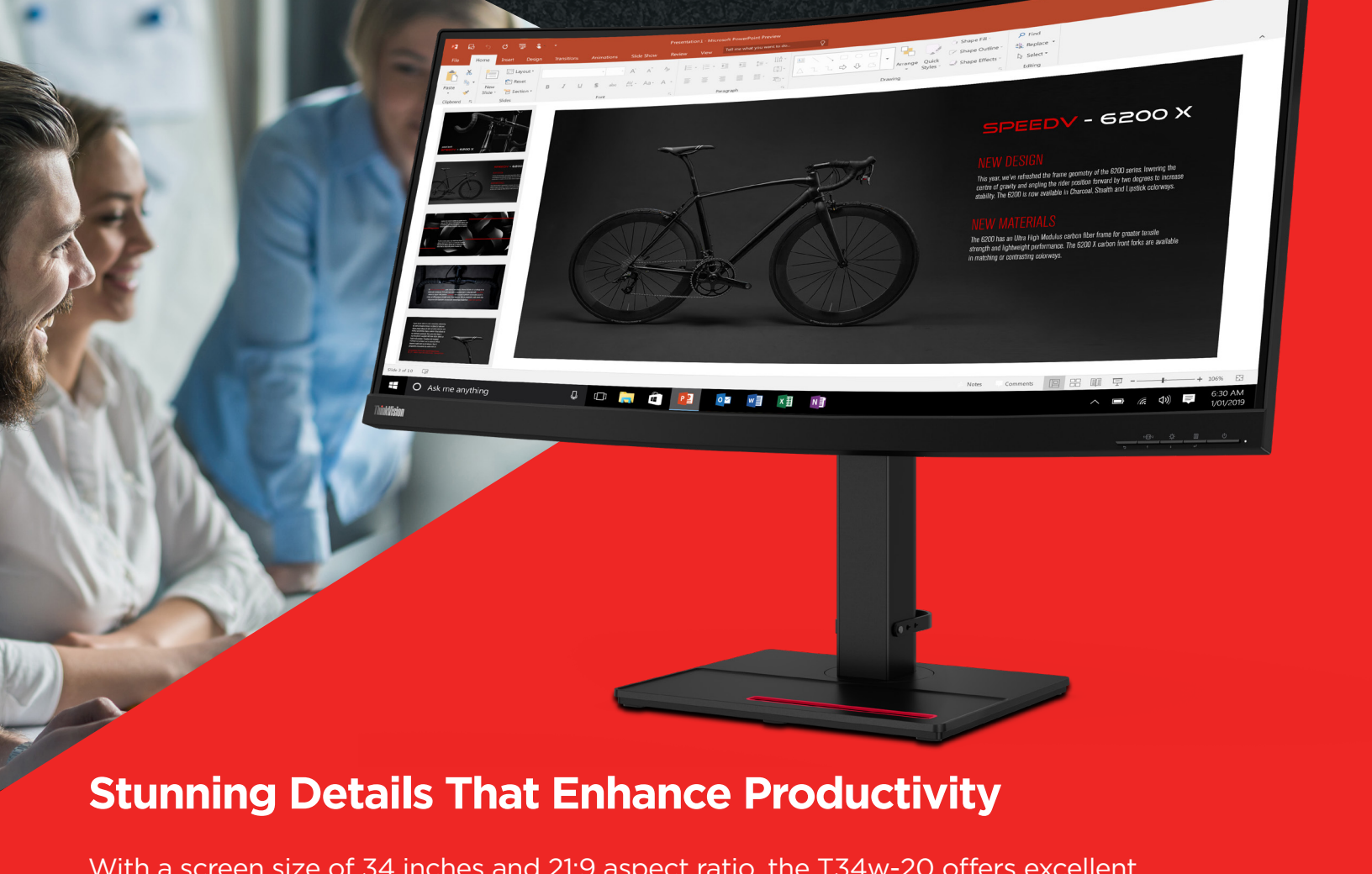
**Captivating Display**



**Uninterrupted Connectivity**



**Advocating Productivity**



## Stunning Details That Enhance Productivity

With a screen size of 34 inches and 21:9 aspect ratio, the T34w-20 offers excellent viewing experience through its curved, panoramic screen. You get more screen real estate and impeccable visuals that ensure you capture even the tiniest detail that is important to you. The WQHD 3440 x 1440 resolution and 1500R curved screen let users concentrate better on the task at hand. Seamless multi-screen experience is made possible, thanks to its 3-side NearEdgeless screen.



**Display**  
34-inch



**Resolution**  
WQHD 3440 x 1440



**Screen**  
1500R Curvature



## Smarter Connectivity, Improved Efficiency

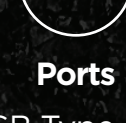
Today's workforce demands a monitor that has an optimum screen size, high resolution, and a bright display. The T34w-20 delivers all this and more while ensuring that your work has your complete attention at all times. Its convenient and clutter-free USB Type-C one-cable solution allows you to transfer video and data, while simultaneously charging your devices. HDMI, DP, USB hub, and audio output enable you to connect to peripherals effortlessly, enhancing collaboration. The Smart Power technology on the T34w effectively manages power delivery and reduces maximum power consumption, through USB Type-C.



**One-cable Solution**  
Full-function USB Type-C



**Power Delivery**  
Smart Power Function  
up to 75W\* Power Delivery  
via USB Type-C



**Ports**  
1 x USB Type-C Gen1 (DP1.2 Alt Mode)  
1 x HDMI 2.0  
1 x DP 1.2  
1 x Audio Out (3.5 mm)  
4 x USB 3.1 Gen 1 (1 BC)



## Ergonomically Designed to Keep Your Workplace Organized

Designed keeping user comfort in mind, and with space-saving solutions, the T34w-20 has a higher lift range and broader tilt angles than most monitors. This minimizes wobble and allows you to adjust its height to fit your needs. You can also deploy the T34w-20 on a wall using its VESA mount capability. In addition, the monitor comes with an integrated phone holder and flexible cable management for an organized and clutter-free desk space. TÜV Rheinland Eye Comfort certification ensures minimal eye strain while delivering a comfortable viewing experience.



**Space-saving Design**  
Integrated Phone Holder  
Flexible Cable Management



**Ergonomic Stand**  
Higher Lift Range  
Wider Tilt Angles



**Eye Care Technology**  
TÜV Rheinland Eye Comfort Certification

## ThinkVision T34w-20 Specifications

### DISPLAY

- Panel Size**  
34-inch
- Screen Dimensions**  
797.2 mm x 333.7 mm
- Panel Type**  
3-side NearEdgeless VA
- Curvature**  
1500R
- Backlight**  
WLED
- Aspect Ratio**  
21:9
- Resolution**  
3440 x 1440
- Pixel Pitch**  
0.23175 x 0.23175 mm
- Dot/Pixel Per Inch (DPI/PPI)**  
109
- Viewing Angle (H x V @ CR 10:1)**  
178° / 178°
- Response Time**  
4ms (extreme mode)  
6ms (normal mode)
- Refresh Rate**  
60 Hz
- Brightness (typical)**  
350 cd/m<sup>2</sup>
- Contrast Ratio (typical)**  
3000:1
- Dynamic Contrast Ratio (typical)**  
3M:1
- Colour Gamut**  
99% sRGB
- Color Support (typical)**  
16.7 Million
- Anti-glare**  
Yes

### CONNECTIVITY

- Video Signal**  
1 x USB Type-C Gen1 (DP1.2 Alt Mode)  
1 x HDMI 2.0  
1 x DP 1.2
- Audio Signal**  
1 x Audio Out (3.5 mm)
- USB Upstream**  
1 x USB 3.1 Gen1 (by USB Type-C)
- USB Downstream**  
4 x USB 3.1 Gen1 (1 BC)

### POWER

- Power Consumption (typical/max)**  
46W / 140W
- Power Consumption Sleep/Off Mode**  
< 0.5W
- Power Consumption Switch-off Mode**  
< 0.5W
- Energy Star Power Consumption (P<sub>off</sub>/E<sub>rec</sub>)**  
34W / 107kWh
- USB Type-C Power Delivery (W)**  
Up to 75W\*
- Smart Power**  
Yes
- Voltage Required**  
AC 100 to 240 V (50-60 Hz)

### MECHANICAL

- Tilt Angle (front/back)**  
-5° / 35°
- Swivel Angle (left/right)**  
+45° / -45°
- Lift (max range)**  
135 mm
- VESA Mount Capability**  
Yes (100 x 100 mm)
- Kensington Lock Slot**  
Yes
- Cable Management**  
Yes
- Bezel Color**  
Raven Black
- Bezel Width (side)**  
2.2 mm
- Bezel Width (top/bottom)**  
2.2 mm / 27.8 mm

### DIMENSION

- Size Packed (D x H x W, mm/inch)**  
523.0 x 984.0 x 98.0 mm / 20.59 x 39.13 x 3.88 inches
- Size Unpacked w/ Stand (D x H x W, mm/inch) (lowest position)**  
245.0 x 462.4 x 808.6 mm / 9.65 x 18.21 x 31.84 inches
- Size Unpacked w/ Stand (D x H x W, mm/inch) (highest position)**  
245.0 x 597.4 x 808.6 mm / 9.65 x 23.52 x 31.84 inches

### Size Unpacked w/o Stand (head only) (D x H x W, mm/inch)

106.1 x 372.6 x 808.6 mm / 4.18 x 14.67 x 31.84 inches

### Min. Distance from Table to Panel (lowest pixel at bottom of screen, mm)

119.1 mm

### Max. Distance from Table to Panel (highest pixel at top of screen, mm)

587.9 mm

### Weight Packed (kg/lbs.)

13.85 kg / 30.53 lbs.

### Weight Unpacked (kg/lbs.)

9.91 kg / 21.85 lbs.

### Weight (monitor head only) (kg/lbs.)

6.91 kg / 15.23 lbs.

### Full Container Load (40' STD / 20' STD)

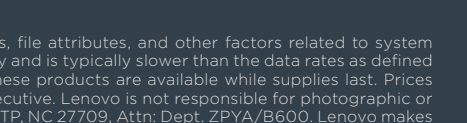
432 / 216 units

### WHAT'S IN THE BOX

- Monitor with stand
- 1 x Power cable (1.8 m)
- 1 x DP cable (1.8 m) (NA & LA only)
- 1 x USB Type-C to Type-A cable (1.8 m) (NA & LA only)
- 1 x USB Type-C to Type-C cable (1.8 m)
- Quick setup guide

### CERTIFICATION

- ENERGY STAR Rating**  
8.0
- CCC**  
Yes
- TCO**  
8.0
- TCO Edge**  
2.0
- EPEAT**  
Silver
- RoHS (EU 2002/95/EC)**  
Yes
- Windows Certification**  
Windows 7, Windows 10
- China Energy Efficiency Standard**  
Tier 2
- TÜV Rheinland Eye Comfort**  
Yes



\*Listed as maximum capacity of power delivery. Actual capacity of power delivery may vary depending upon devices connected or monitor configuration, and may decline with downstream USB ports connected or higher brightness setting.  
Depending on many factors such as the processing capability of peripheral devices, file attributes, and other factors related to system configuration and operating environments, the actual transfer rate using the various USB connectors on this device will vary and is typically slower than the data rates as defined by the respective USB specifications. - 5 Gbit/s for USB 3.1 Gen1, 10 Gbit/s for USB 3.1 Gen2, & 20 Gbit/s for USB 3.2. These products are available while supplies last. Prices shown are subject to change without notice. For any questions concerning price, please contact your Lenovo Account Executive. Lenovo is not responsible for photographic or typographic errors. Warranty: For a copy of applicable warranties, write to: Warranty Information, 500 Park Offices Drive, RTP, NC 27709, Attn: Dept. ZPVA/B600. Lenovo makes no representation or warranty regarding third-party products or services. Trademarks: Lenovo, the Lenovo logo, Rescue and Recovery, ThinkPad, ThinkCentre, ThinkStation, ThinkVantage, and ThinkVision are trademarks or registered trademarks of Lenovo. Microsoft, Windows, and Vista are registered trademarks of Microsoft Corporation. Intel, the Intel logo, Intel Inside, Intel Core, and Core Inside are trademarks of Intel Corporation in the U.S. and/or other countries. Other company, product, and service names may be trademarks or service marks of others.