

Philips  
Full HD LCD monitor

**E Line**  
27" (68.6 cm)  
1920 x 1080 (Full HD)

**272E2FA**



## Experience true colour, unconstrained visuals

The new Philips E line monitor with 4-sides narrow border and cable management design offers a stylish enhancement to your workspace. Experience crisp Full HD visuals, 1 ms and AMD FreeSync™ technology for smooth gaming action.

### **Superb Picture Quality**

- 4-sided frameless display
- IPS LED wide view technology for image and colour accuracy
- SmartContrast for rich black details

### **Good for Gaming**

- Effortlessly smooth gameplay with AMD FreeSync™ technology
- 1 ms (MPRT) fast response for crisp images and smooth gameplay
- SmartImage game mode optimised for gamers

### **Features designed for you**

- Less eye fatigue with Flicker-Free technology
- LowBlue Mode for easy-on-the-eyes productivity
- Cable management reduces cable clutter for a neat workspace
- EasySelect menu toggle key for quick on-screen menu access
- Built-in stereo speakers for multimedia

**PHILIPS**

Full HD LCD monitor  
E Line 27" (68.6 cm), 1920 x 1080 (Full HD)

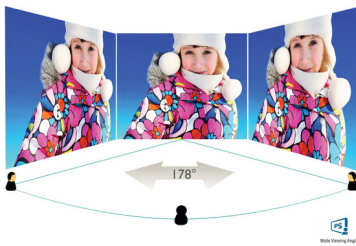
# Highlights

## 4-sided frameless



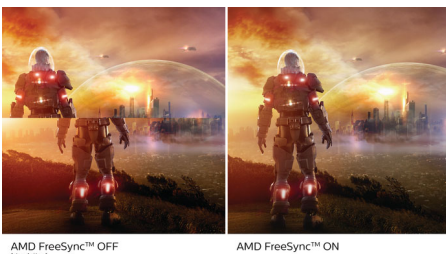
Extremely minimising 4 sided bezels on this virtually frameless display give a minimalist look and offer an expansive viewing experience. Expands your productivity and makes you focus on the vivid images with seamless visions. Significant wide view without distraction and even multi monitor set-up in pivot mode.

## IPS technology



IPS displays use an advanced technology that gives you extra-wide viewing angles of 178/178 degrees, making it possible to view the display from almost any angle. Unlike standard TN panels, IPS displays give you remarkably crisp images with vivid colours, making them ideal not only for Photos, movies and web browsing, but also for professional applications that demand colour accuracy and consistent brightness at all times.

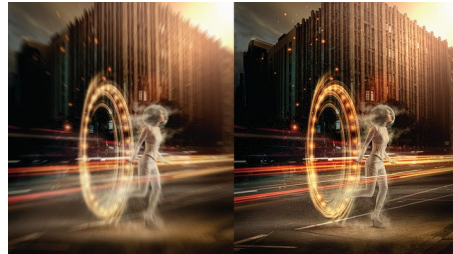
## Ultra-smooth gaming



Gaming shouldn't be a choice between choppy gameplay or broken frames. With the new Philips monitor it doesn't have to be. Get fluid,

artefact-free performance at virtually any frame rate with AMD FreeSync™ technology, smooth, quick refresh and ultra-fast response time.

## 1 ms MPRT fast response



MPRT (motion picture response time) is a more intuitive way to describe response time, which directly refers to the duration between seeing blurry noise and clean, crisp images. The Philips gaming monitor with 1 ms MPRT effectively eliminates smearing and motion blur and delivers sharper and more precise visuals to enhance your gaming experience. The best choice for playing thrilling and twitch-sensitive games.

## SmartImage Game mode



The new Philips gaming display has quick-access OSD fine-tuned for gamers, offering you multiple options. "FPS" mode (First person shooting) improves dark themes in games, allowing you to see hidden objects in dark areas. "Racing" mode adapts the display with the fastest response time and high colour, along with image adjustments. "RTS" mode (Real-time strategy) has a special SmartFrame mode that enables highlighting of specific area and allows for size and image adjustments. Gamer 1 and Gamer 2 enable you to save personal customised settings based on different games, ensuring best performance.

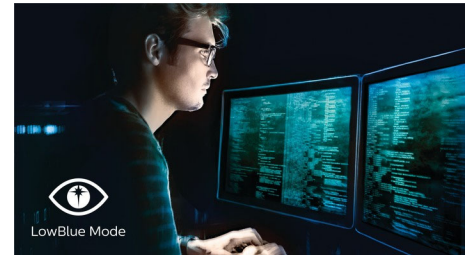
272E2FA/01

## Flicker-Free technology



Due to the way brightness is controlled on LED-backlit screens, some users experience flicker on their screen which causes eye fatigue. Philips Flicker-Free technology applies a new solution to regulate brightness and reduce flicker for more comfortable viewing.

## LowBlue Mode



Studies have shown that just as ultra-violet rays can cause eye damage, shortwave-length blue light rays from LED displays can cause eye damage and affect vision over time. Developed for wellbeing, the Philips LowBlue Mode setting uses a smart software technology to reduce harmful shortwave blue light.

## Cable management



Cable management is an intimate design that maintains a tidy workspace by organising the cables and wires required for the operation of a display device.



4-sided  
Frameless



Wide Viewing  
Angle

AMD  
FreeSync



Fast Response  
1 ms MPRT



SmartImage™  
Game



Flicker-free



LowBlue Mode



EasySelect



Built-in Speaker



HDMI™  
HIGH DEFINITION MULTIMEDIA INTERFACE

# Specifications

## Picture/Display

- LCD panel type: IPS technology
- Backlight type: W-LED system
- Panel Size: 27 inch/68.6 cm
- Display Screen Coating: Anti-Glare, 3H, Haze 25%
- Effective viewing area: 597.89 (H) x 336.31 (V) mm
- Aspect ratio: 16:9
- Maximum resolution: 1920 x 1080 @ 75 Hz\*
- Pixel Density: 82 PPI
- Response time (typical): 4 ms (Grey to Grey)\*
- MPRT: 1 ms
- Brightness: 350 cd/m<sup>2</sup>
- Contrast ratio (typical): 1000:1
- SmartContrast: Mega Infinity DCR
- Pixel pitch: 0.3114 x 0.3114 mm
- Viewing angle: 178° (H)/178° (V), @ C/R > 10
- Picture enhancement: SmartImage game
- Colour gamut (typical): NTSC 97.4%\*, sRGB 113.1%\*
- Display colours: 16.7 M
- Scanning Frequency: 30–85 kHz (H) / 48–75 Hz (V)
- sRGB
- Flicker-free
- LowBlue Mode
- EasyRead
- AMD FreeSync™ technology

## Connectivity

- Signal Input: VGA (Analogue), DisplayPort x 1, HDMI (digital, HDCP)
- Sync Input: Separate Sync, Sync on Green
- Audio (In/Out): PC audio-in, Headphone out

## Convenience

- Built-in Speakers: 3 W x 2
- User convenience: Power On/Off, Menu, Volume, Input, SmartImage Game
- OSD Languages: Brazil Portuguese, Czech, Dutch, English, Finnish, French, German, Greek, Hungarian, Italian, Japanese, Korean, Polish, Portuguese, Russian, Simplified Chinese, Spanish, Swedish, Traditional Chinese, Turkish, Ukrainian
- Other convenience: Kensington lock, VESA mount (100 x 100 mm)
- Plug and Play Compatibility: DDC/CI, Mac OS X, sRGB, Windows 10 / 8.1 / 8 / 7

## Stand

- Tilt: -5/20 degree

## Power

- On mode: 15.15 W (typ.) (EnergyStar test method)
- Standby mode: 0.5 W
- Off mode: 0.3 W
- Energy Label Class: E
- Power LED indicator: Operation - White, Standby mode - White (flashing)
- Power supply: External, 100–240 VAC, 50–60 Hz

## Dimensions

- Product with stand (max height): 614 x 462 x 234 mm
- Product without stand (mm): 614 x 354 x 38 mm
- Packaging in mm (W x H x D): 678 x 504 x 153 mm

## Weight

- Product with stand (kg): 4.76 kg
- Product without stand (kg): 3.43 kg
- Product with packaging (kg): 7.02 kg

## Operating conditions

- Temperature range (operation): 0 to 40 °C
- Temperature range (storage): -20 to 60 °C
- Relative humidity: 20%-80 %
- Altitude: Operation: +12,000 ft (3658 m), Non-operation: +40,000 ft (12,192 m)
- MTBF: 50,000 hrs (excluding backlight) hour(s)

## Sustainability

- Environmental and energy: EnergyStar 8.0, TCO Certified, RoHS, Mercury Free
- Recyclable packaging material: 100 %

## Compliance and standards

- Regulatory Approvals: CB, EPA, CE Mark, CU-EAC, TUV/ISO9241-307, TUV-BAUART, EAEU RoHS, FCC Class B, ICES-003

## Cabinet

- Colour: Black
- Finish: Textured

## What's in the box?

- Monitor with stand
- Cables: HDMI cable, Power cable
- User Documentation



Issue date 2022-04-21

Version: 4.0.1

12 NC: 8670 001 67752  
EAN: 87 12581 76763 1

© 2022 Koninklijke Philips N.V.  
All Rights reserved.

Specifications are subject to change without notice.  
Trademarks are the property of Koninklijke Philips N.V.  
or their respective owners.

[www.philips.com](http://www.philips.com)

\* "IPS" word mark / trademark and related patents on technologies belong to their respective owners.  
\* The maximum resolution works for either HDMI input or DP input.  
\* NTSC Area based on CIE 1976  
\* sRGB Area based on CIE1931  
\* 2020 Advanced Micro Devices, Inc. All rights reserved. AMD, the AMD Arrow logo, AMD FreeSync™ and combinations thereof are trademarks of Advanced Micro Devices, Inc. Other product names used in this publication are for identification purposes only and may be trademarks of their respective companies.  
\* The monitor may look different from feature images.