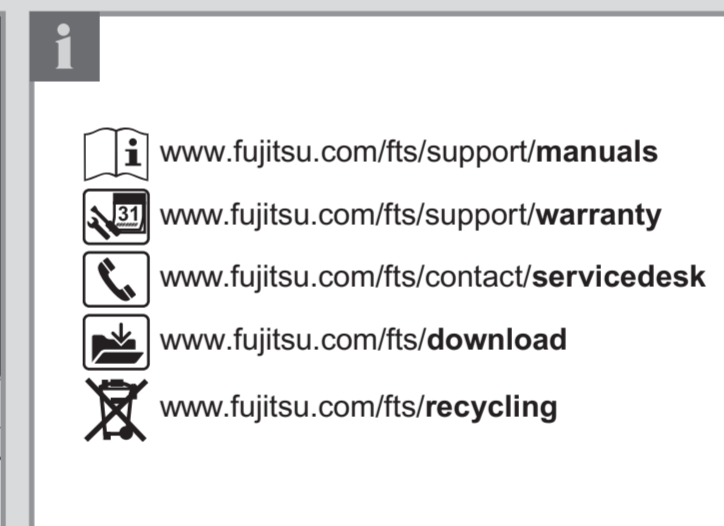
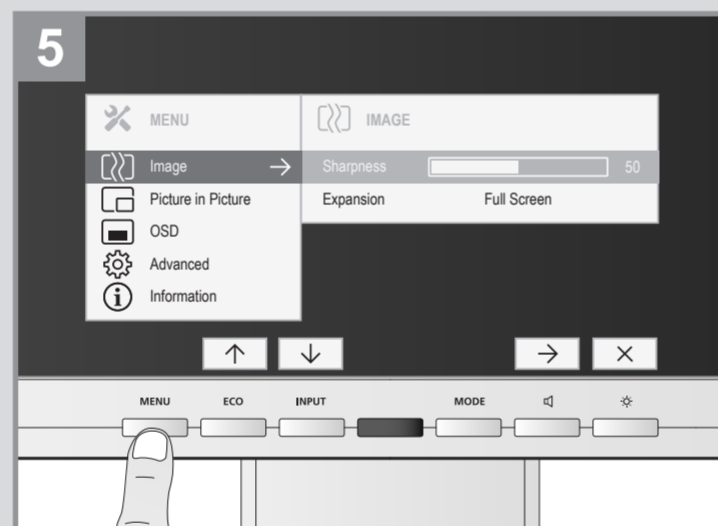
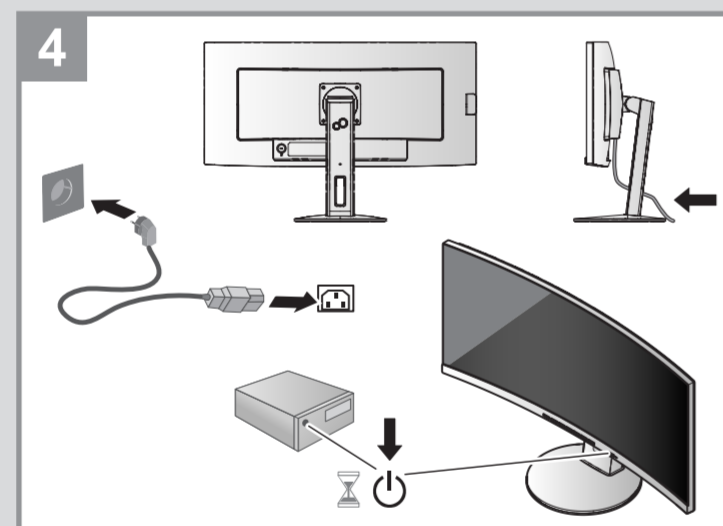
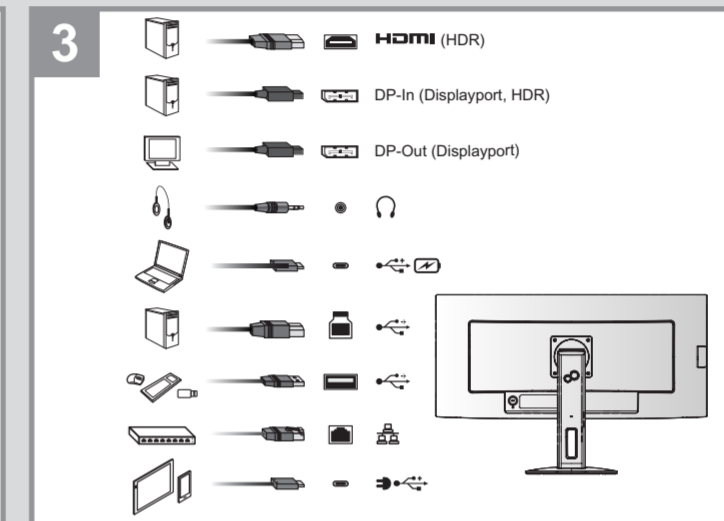
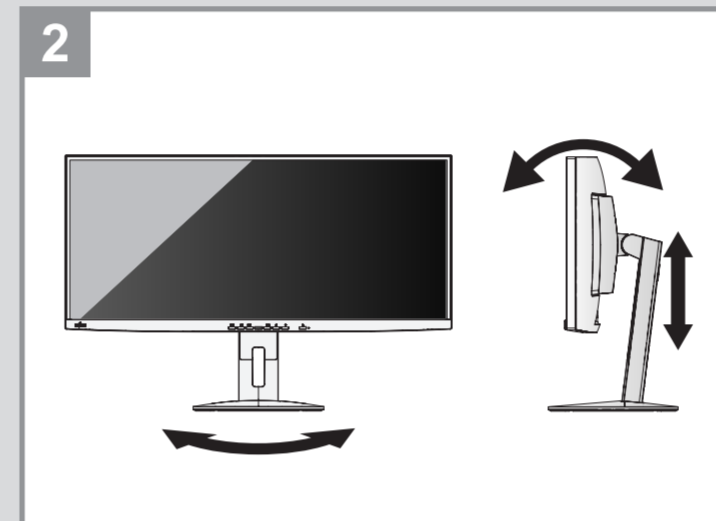
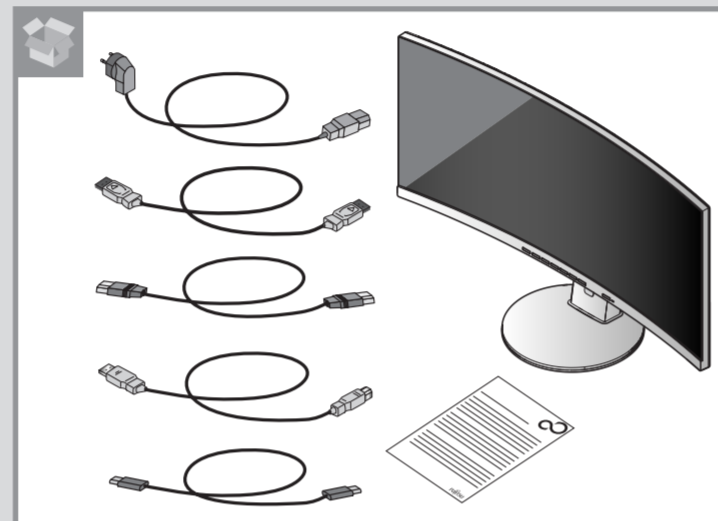
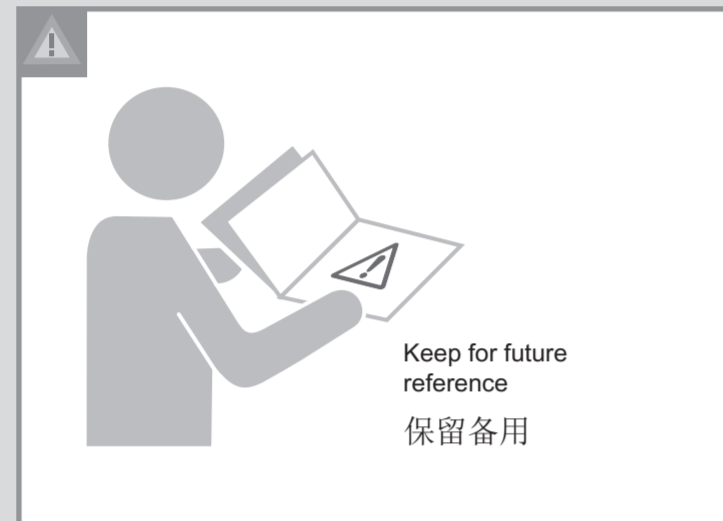


# DISPLAY P34-9 US | P34-9 UE



## Quick Start Guide



**Published by**  
Fujitsu Technology Solutions GmbH  
Mies-van-der-Rohe-Straße 8  
80807 München, Germany

**Copyright**  
© 05/2020 Fujitsu Technology Solutions GmbH  
Order No.: A26361-K1695-Z310-1-7619, Edition 1



A26361-K1695-Z310-1-7619

### Self Declaration of Conformity - SDOC

This device complies with Part 15 of the FCC Rules. Operation is subject to the following two conditions:  
(1) this device may not cause harmful interference, and  
(2) this device must accept any interference received, including interference that may cause undesired operation.  
Name of Responsible Party: Fujitsu America, Inc., 1250 E. Arques Avenue, Sunnyvale, CA 94085, U.S.A., Phone No.: (408) 746-6000  
We, Fujitsu America, Inc., hereby declare that this product was tested conforming to the applicable FCC rules under the most accurate measurement standards possible, and that all the necessary steps have been taken and are in force to assure that production units of the same equipment will continue to comply with the Commissions requirements.



746.06401.0002



P34-9U