

FUJITSU Display
Serie P2410 / B2410



Congratulations on your purchase of an innovative product from Fujitsu.

Latest information about our products, tips, updates etc. can be found on the Internet at: ["http://www.fujitsu.com/fts/"](http://www.fujitsu.com/fts/)

You can find driver updates at: ["http://support.ts.fujitsu.com/download"](http://support.ts.fujitsu.com/download)

Should you have any technical questions, please contact:

- our Hotline/Service Desk (["http://support.ts.fujitsu.com/contact/service desk"](http://support.ts.fujitsu.com/contact/service desk))
- Your sales partner
- Your sales office

We hope you enjoy working with your new Fujitsu system!



Published by / Contact address in the EU

Fujitsu Technology Solutions GmbH

Mies-van-der-Rohe-Straße 8

80807 Munich, Germany

["http://www.fujitsu.com/fts/"](http://www.fujitsu.com/fts/)

Copyright

© Fujitsu Client Computing Limited 2021. All rights reserved.

Publication Date

12/2021

Order No.: A26361-K1697-Z320-1-7619, edition 1

P2410 WE / P2410 WS / P2410 WE CAM P2410 TE / P2410 TS CAM B2410 WE / B2410 WS

Operating Manual

Your LCD screen...	5
Important notes	7
Getting started	11
Operation	24
Additional information	49
Troubleshooting	64
Technical specification	67
Appendices	77

Remarks

Notes on the product description meet the design requirements of Fujitsu and are provided for the purposes of comparison. The actual results may differ due to several factors. Subject to technical changes without prior notification. Fujitsu accepts no responsibility for technical or editorial mistakes or omissions.

Trademarks

Fujitsu and the Fujitsu logo are registered trademarks of Fujitsu Limited in the United States and other countries.

DisplayView is a registered trademark of Fujitsu Client Computing Limited or its subsidiaries.

Microsoft and Windows are trademarks or registered trademarks of the Microsoft Corporation in the United States and/or other countries.

VESA is a registered trademark of Video Electronics Standards Association.



The terms HDMI and HDMI High-Definition Multimedia Interface and the HDMI logo are trademarks or registered trademarks of HDMI Licensing Administrator, Inc. in the United States and other countries.

USB-C is a trademark of the USB Implementers Forum in the USA and other countries.

VDE is a registered trademark of VDE Verband der Elektrotechnik Elektronik Informationstechnik e.V. in Germany and/or other countries.

HAR is a registered trademark of VDE Verband der Elektrotechnik Elektronik Informationstechnik e.V. or other national electrical engineering associations in Germany and/or other countries.

Any other trademarks are the property of their respective owners.

Copyright

No part of this publication may be copied, reproduced or translated without the prior written consent of Fujitsu.

No part of this publication may be saved or transmitted by any electronic means without the written consent of Fujitsu.

Contents

Your LCD screen...	5
Target group	5
Further information	6
Notational conventions	6
Important notes	7
Safety instructions	7
Power cable	8
Transporting the device	8
Cleaning the device	9
CE marking	9
Certification marking	9
Disposal and recycling	10
Getting started	11
Unpacking and checking the delivery	11
Setting up the device	12
Setting up an ergonomic video workstation	12
Mounting the monitor base	14
Adjusting height	15
Adjusting the inclination	15
Adjusting the rotation	15
Removing monitor base	16
Connecting the device	17
P Series	17
B Series	18
Connecting cables to the monitor	19
Attaching the cables to the monitoring	20
Connecting cables to the computer	20
Driver installation	21
Monitor drivers	22
Network drivers	23
Operation	24
Switching the device on and off	24
Notes on the ambient light sensor and presence sensor	25
Changing the monitor settings	27
Functions of the control panel and the OSD menu	28
Select OSD language	28
Setting screen display	29
Configuring the OSD menu	30
Configuring the presence sensor	32
Advanced setting functions	34
Displaying information	36
Activate/deactivate ECO operating mode	36
Selecting the input signal	37
Selecting the application mode	39
Setting colour temperature and colours	41
Adjusting the volume	42
Adjusting the brightness and contrast	44
Locking the OSD menu	45

Disabling audio settings	46
Lock the ON/OFF button	46
Using the Daisy Chain function	47
Additional information	49
Programme "DisplayView"	49
Presence sensor	50
Rotation function	50
Desktop partitioning	50
Power Management	51
USB Power Delivery (USB-PD)	54
KVM feature	55
All-in-one mode	56
ESPRIMO G	56
LIFEBOOK / STYLISTIC	57
Monitor	58
Operating system	59
Network port	60
Initial startup	60
Wake On LAN (WOL)	60
MAC Address Pass Through (MAPT)	60
Preboot Execution Environment (PXE)	61
WebCam and Infrared Camera	61
Low blue light function	61
colour adjustment, ergonomic	62
Explanatory information about standard ISO 9241-307	63
Troubleshooting	64
Technical specification	67
P2410 WE/WS/WE CAM	67
P2410 TE/TS CAM	69
B2410 WE/WS	71
Displayport socket	73
HDMI port	74
USB-C port	75
USB-C Upstream port	76
Appendices	77

Your LCD screen...

has a whole range of useful features and functions, e.g.:

- integrated mechanically lockable webcam with IR, Microsoft Windows Hello feature and FHD resolution (1920 x 1080) (P2410 WE CAM and P2410 TS CAM model)
- TFT display (Thin Film Transistor; active matrix)
- minimal space requirements thanks to slim casing
- optimum ergonomic characteristics (excellent picture definition and colour purity right into the corners)
- high degree of brightness and good contrast
- optimal resolution (TE and TS model: 1920 x 1080 / WE and WS model: 1920 x 1200)
- presentation of up to 1,07 billion colours (in conjunction with an appropriate graphics card)
- automatic scanning of horizontal frequencies from 30 to 82 kHz and refresh rates (vertical frequencies) from 48 to 76 Hz (absolutely flicker-free)
- Digital screen controller with microprocessor for storing 36 different display modes
- freely adjustable colour alignment for matching the screen colours to the colours of various input and output devices
- convenient operation via integrated OSD (On-Screen-display) menu
- VESA-DDC compatibility
- VESA-FPMPI compatibility (Flat Panel Monitor Physical Mounting Interface) – Mounting device for swivel arm or a similar accessory
- Plug&Play capability
- Digital video inputs (USB-C, DisplayPort and HDMI) with HDCP
- power management for reducing power consumption when the computer is not in use
- Compliance with the recommendations according to the latest TCO requirements
- the monitor fulfills all GS ("Geprüfte Sicherheit", Certified Security) requirements.

This operating manual contains important information you require to start up and run your LCD monitor.

A digital graphics card with display port and/or USB-C interface or a video signal source with HDMI interface is required to control the LCD monitor. B-series monitors can alternatively be controlled via an analogue VGA or DVI-D interface. The monitor processes the data supplied to it by the graphics card. The graphics card or the corresponding driver software is responsible for setting the modes (resolution and refresh rate).

When putting the monitor into operation for the first time, the screen display should be optimally adapted to the display adapter used and adjusted in accordance with your needs (see chapter "[Changing the monitor settings](#)", [Page 27](#)).

Target group

You don't need to be an "expert" to perform the operations described here. Nonetheless, it is important to always observe the safety notes given in the operating instructions for the computer and in this manual.

In the event of any problems, please contact your sales office or our Service Desk.





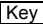

Further information

Details of how you set the resolution and refresh rate are provided in the documentation for your display adapter and the associated driver software.

For ergonomic reasons, we recommend a screen resolution of 3440 x 1440 pixels.

Because of the technology used (active matrix) an LCD monitor provides a totally flicker-free picture even with a refresh rate of 60 Hz.

Notational conventions

	Pay particular attention to text marked with this symbol. Failure to observe these warnings could pose a risk to health, damage the device or lead to loss of data. The warranty will be invalidated if the device becomes defective through failure to observe these warnings.
	Indicates important information for the proper use of the device.
	Indicates an activity that must be performed
	Indicates a result
This font	indicates data entered using the keyboard in a program dialogue or at the command line, e.g. your password (Name123) or a command used to start a program (start.exe)
This font	indicates information that is displayed on the screen by a program, e.g.: <i>Installation is complete.</i>
<i>This font</i>	indicates <ul style="list-style-type: none"> terms and texts used in a software interface, e.g.: Click on <i>Save</i> names of programs or files, e.g. <i>Windows</i> or <i>setup.exe</i>.
"This font"	indicates <ul style="list-style-type: none"> cross-references to another section, e.g. "Safety information" cross-references to an external source, e.g. a web address: For more information, go to "http://www.fujitsu.com/fts/" Names of CDs, DVDs and titles or designations of other materials, e.g.: "CD/DVD Drivers & Utilities" or "Safety" Manual
	indicates a button on the monitor, e.g.: 
This font	indicates terms and texts that are emphasised or highlighted, e.g.: Do not switch off the device

Important notes

In this chapter you will find information regarding safety which it is essential to take note of when working with your device.

Safety instructions

This device complies with the relevant safety regulations for data processing equipment, including electronic office machines for use in an office environment. If you have any questions about whether the device can be used in the intended environment, please contact your sales office or our Service Desk.

- The display surface of the device is sensitive to pressure and scratches. You should therefore be careful with the display surface in order to avoid lasting damage (scratches).
- If the device is brought into the installation site from a cold environment, condensation can form. Before operating the device, wait until it is absolutely dry and has reached approximately the same temperature as the installation site.
- When installing and operating the device, please observe the notes on environmental conditions in Chapter ["Technical specification", Page 67](#) as well as the instructions in Chapter ["Setting up an ergonomic video workstation", Page 12](#).
- To ensure sufficient ventilation, the air inlet and outlet openings of the device must be kept clear.
- The device automatically sets itself to the correct voltage within the range from 100 V to 240 V. Make sure that the local mains voltage is neither higher nor lower than this range.
- Ensure that the power socket on the device and the mains outlet are freely accessible.
- The ON/OFF switch does not disconnect the monitor from the mains voltage. To completely disconnect from the mains voltage, you must remove the mains plug from the mains socket.
- The device is equipped with a power cable that complies with safety standards.
- Use the supplied power cable only.
- Lay the cables in such a way that they do not create a hazard (danger of tripping) and cannot be damaged. When connecting the device, observe the relevant notes in chapter ["Connecting the device", Page 17](#).
- No data transfer cables should be connected or disconnected during a thunderstorm.
- Make sure that no objects (e.g. jewellery chains, paper clips, etc.) or liquids get inside the device (danger of electric shock, short circuit).
- The device is not waterproof! Never immerse the device in water and protect it from spray water (rain, sea water).
- In an emergency (e.g. damaged casing, operation controls or cables, penetration of liquids or foreign matter), switch off the device, disconnect the power plug and contact your sales outlet or our Service Desk.
- Repairs to the device must only be performed by qualified technicians. Unauthorised opening and incorrect repair may greatly endanger the user (electric shock, fire risk).
- Only use the screen resolution settings and refresh rates specified in Chapter ["Technical specification", Page 67](#). Otherwise you may damage the device. If you are in any doubt, contact your sales outlet or our Service Desk.
- Use a screen saver with moving images and activate the power management for your monitor to prevent still images from "burning in".
- If you operate the device with the swivel arm or a similar accessory, it must not be turned by 180°.

- Store this manual close to the device. If you pass the device on to third parties, you should pass this manual on with it.
- We recommend that you place your device on a durable, non-slip surface. In view of the many different finishes and varnishes used on furniture, it is possible that the feet of the device may mark the surface they stand on.
- The device must be connected to protective earth.
- To prevent possible hearing damage, do not listen at high volume levels for long periods.
- Warning for excessive sound pressure from earphones and headphones:
Excessive sound pressure from earphones and headphones can cause hearing loss. Adjustment of the equalizer to maximum increases the earphones and headphones output voltage and therefore the sound pressure level.

Power cable

Use the supplied power cable only.

Use the following guidelines if it is necessary to replace the original cable set.

- The female/male receptacles of the cord set must meet IEC60320/CEE-22 requirements.
- The cable has to be HAR-certified or VDE-certified. The mark HAR or VDE will appear on the outer sheath.
- For devices which are mounted on a desk or table, type SVT or SJT cable sets may be used. For devices which sit on the floor, only SJT type cable sets may be used.
- The cable set must be selected according to the rated current for your device.
- If necessary, replace the original power cable with a regular grounded 3-core mains lead.

Transporting the device



Transport all parts separately in their original packaging or in a packaging which protects them from knocks and jolts, to the new site.

Do not unpack them until all transportation manoeuvres are completed.

If the device is brought from a cold environment into the room where it will be used, condensation may occur. Before operating the device, wait until it is absolutely dry and has reached approximately the same temperature as the installation site.

Cleaning the device



Switch off the device and unplug the power plug.

Do not clean any interior parts yourself, leave this job to a service technician.

Do not use any cleaning agents that contain abrasives or may corrode plastic.

Ensure that no liquid enters the device.

The display surface of the device is sensitive to pressure and scratches. Clean it only using a soft, slightly moistened cloth.

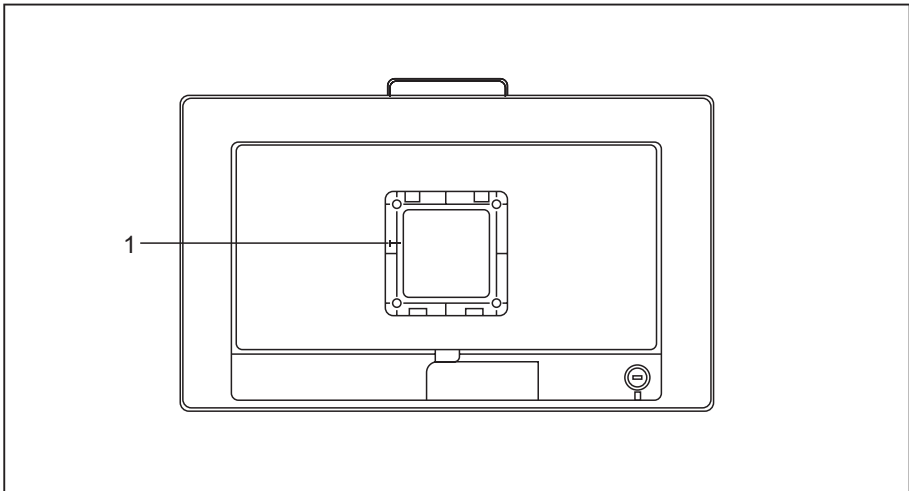
The surface of the casing can be cleaned with a dry cloth. If particularly dirty, use a cloth that has been moistened in mild domestic detergent and then carefully wrung out.

CE marking

The shipped version of this device complies with the requirements of EU directives 2014/30/EU "Electromagnetic Compatibility", 2014/35/EU "Low voltage directive", 2009/125/EU "Ecodesign directive" and 2011/65/EU "RoHS directive".

Certification marking

The certification mark is affixed near the VESA mounting surface. It becomes visible once the stand is removed.



1 = Certification marking

Disposal and recycling

This device has been manufactured as far as possible from materials which can be recycled or disposed of in such a way that the environment is not damaged. The device may be taken back after use to be reused or recycled, provided that it is returned in a condition that befits its intended use. Any components not reclaimed will be disposed of in an environmentally acceptable manner.

The device must be disposed of in accordance with the local regulations for disposal of special waste.

If you have any questions on disposal, please contact your local sales office or our Service Desk, or contact one of the following directly:

Germany	Belgium	Switzerland
AfB gemeinnützige GmbH Otto-Stadler-Strasse 6 D-33100 Paderborn Tel.: +49 (0) 5251 / 414 90 10 Fax: +49 (0) 5251 / 414 90 29 "https://www.fujitsu.com/de/about/local/social-responsibility/environment-care/recycling/"	RECUPEL Boulevard Reyers, 80 B-1030 Brussels Tel.: +32 2 / 706 86 16 Fax: +32 2 / 706 86 13 E-mail: "info@recupel.be" "http://www.recupel.be"	SWICO Schweizerischer Wirtschaftsverband der Informations-, Kommunikations- und Organisationstechnik A list of the SWICO acceptance locations can be found at: "http://www.swico.ch"
Asia	USA	
Taiwan: Environmental Protection Administration Executive Yuan R.O.C. "http://recycle.epa.gov.tw"	Fujitsu America, Inc. 1250E. Arques Avenue Sunnyvale, CA 94085 U.S.A. Phone No.: (408) 746-6000	

You can also find information about this on the Internet at ["https://www.fujitsu.com/emeia/about/local/csr/recycling/"](https://www.fujitsu.com/emeia/about/local/csr/recycling/).

Getting started

Unpacking and checking the delivery



The display surface of the device is sensitive to pressure and scratches. Always hold the device by the casing!

The complete device package includes:

- one monitor
- one monitor base
- a data cable (DisplayPort)
- a USB-C cable (P-series)
- one USB 3.0 cable (USB-A to USB-B)
- one power cable
- a flyer "Quick Start Guide"
- a flyer "safety instructions"
- ▶ Unpack all the individual parts.
- ▶ Check the contents of the package for any visible damage caused during transport.
- ▶ Check whether the delivery conforms to the details in the delivery note.
- ▶ Should you discover that the delivery does not correspond to the delivery note, notify your local sales outlet immediately.



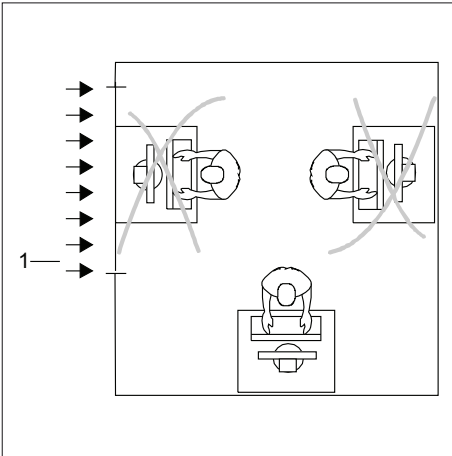
Do not discard the original packing material of the devices. You may need the packaging in the future if you need to transport your device.

Setting up the device

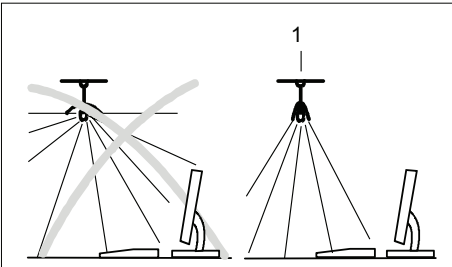


To ensure sufficient ventilation, the air inlet and outlet openings of the device must be kept clear.

Setting up an ergonomic video workstation



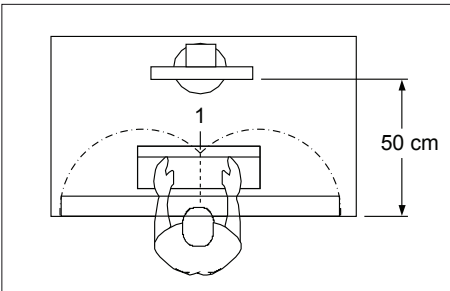
- ▶ Do not position the video workstation opposite a window (1).



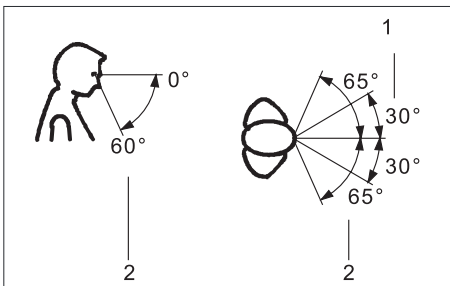
- ▶ Position the monitor outside the reach of a light source (1).



- Position the keyboard where it is easiest to reach (1).



- Position the monitor so that the eye distance to the screen (1) is around 50 cm.



- Position the monitor for optimum viewing (1). The monitor should under no circumstances fall outside the permissible viewing space (2).



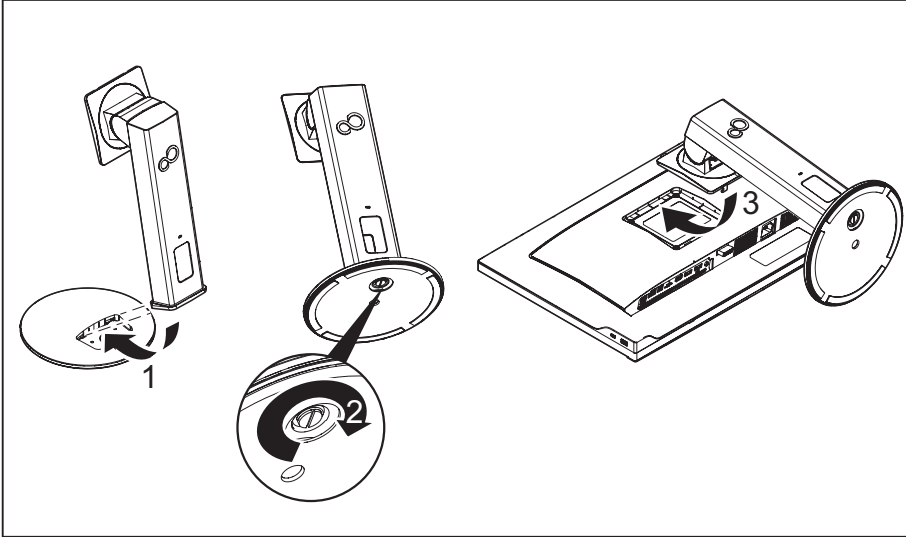
Depending on the situation, it may be advisable to use a swivel arm or similar accessory (VESA FPMPI), which are available from specialist dealers. For this purpose the monitor base must be removed beforehand as described in Chapter ["Removing monitor base", Page 16](#).

Mounting the monitor base



Be careful not to scratch the surface of the screen!

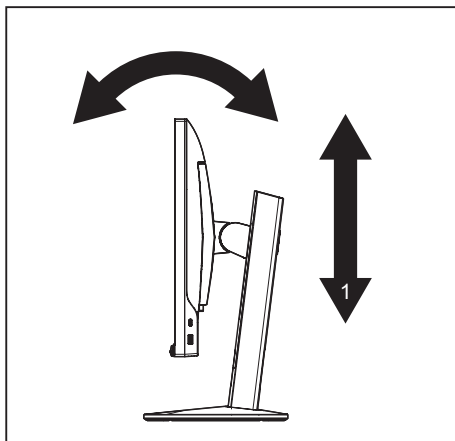
Place the device on a stable, flat and clean surface. If necessary, place an anti-slip cloth on this surface to prevent the device from being scratched.



- ▶ Insert the base plate on the foot (1).
- ▶ Secure the base plate with the screw (2).
- ▶ Lay the monitor on its front on a soft surface.
- ▶ Insert the monitor stand into the bracket in the direction of the arrow (3).

Adjusting height

The height of the monitor can be adjusted by approximately 150 mm.



- ▶ Hold the monitor with both hands on the right and left edge of the casing and move it up or down (1).

Adjusting the inclination

The inclination of the monitor can be adjusted by -5° (forwards) and $+35^{\circ}$ (backwards) from its vertical position.

- ▶ Hold the monitor with both hands on the left and right sides of the casing and move it to the desired angle (see ["Adjusting height", Page 15](#)).

Adjusting the rotation

The monitor can be rotated by $\pm 172^{\circ}$.

- ▶ Grasp the monitor with both hands on the right and left edge of the casing and turn it to the desired position.

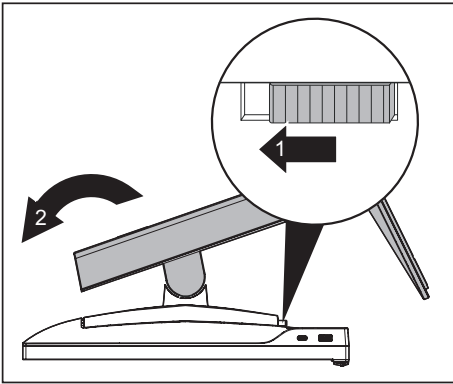
Removing monitor base

Before you can use a swivel arm or a similar accessory, you must remove the monitor base.



The display surface is susceptible to scratching!

Place the device on a stable, flat and clean surface. If necessary, place a slip-resistant cloth on this surface to prevent the device from being scratched.



- ▶ Switch off the monitor and pull the power plug out of the power socket.
- ▶ Lay the monitor on its face on a soft surface.
- ▶ Disconnect all cables.
- ▶ Unlock the stand by moving the slider in the direction of the arrow (1) and lifting the stand upwards (2).
- ↳ You can now mount a swivel arm or a similar accessory in accordance with VESA FPMPMI using a hole spacing of 100 mm.



For instructions on how to mount the swivel arm or a similar accessory, please see the documentation for the swivel arm or similar accessory.



The assured ergonomics and safety of the monitor may be limited if the foot provided for the monitor is not used.

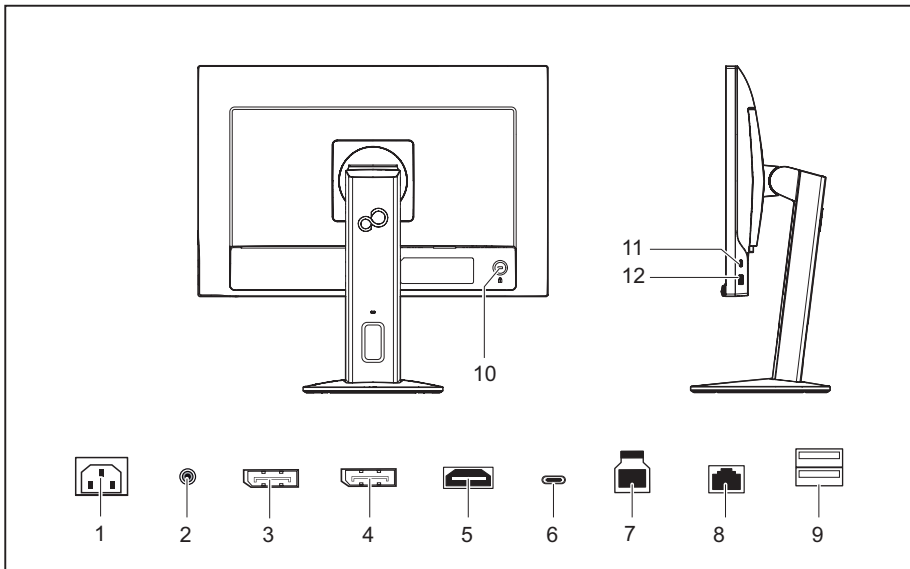
Connecting the device



Please adhere to the safety information in chapter ["Important notes", Page 7.](#)

CE conformance and optimum picture quality are guaranteed only if you use the data cables supplied.

P Series



1 = Power connection

2 = Audio OUT socket

3 = Display port OUT socket (Daisy Chain)

4 = Display port IN socket

5 = HDMI port

6 = USB-C port (USB 3.2 Gen1, Upstream, screw-mounted)

7 = USB-B port (USB 3.2 Gen1, Upstream)

8 = Network port (RJ45, Gigabit Ethernet)

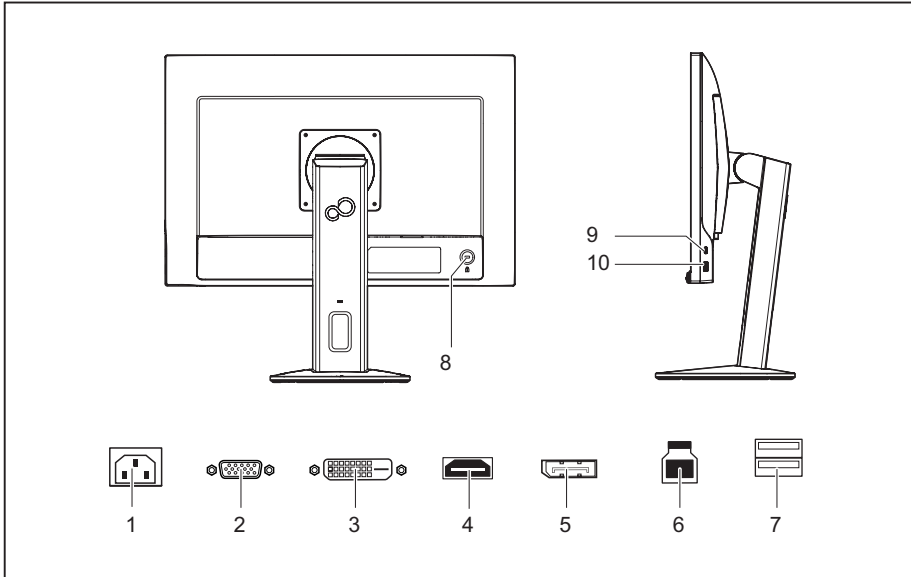
9 = USB-A ports (USB 3.2 Gen1, Downstream)

10 = Security slot for Security Lock

11 = USB-C port (USB 3.2 Gen1, Downstream)

12 = USB-A port (USB 3.2 Gen1, Downstream)

B Series



- 1 = Power connection
- 2 = D-SUB port (VGA)
- 3 = DVI-D port (DVI)
- 4 = HDMI port
- 5 = DisplayPort port

- 6 = USB-B port (USB 3.2 Gen1, Upstream)
- 7 = USB-A ports (USB 3.2 Gen1, Downstream)
- 8 = Security slot for Security Lock
- 9 = USB-C port (USB 3.2 Gen1, Downstream)
- 10 = USB-A port (USB 3.2 Gen1, Downstream)

Connecting cables to the monitor

The data cables supplied have two 20-pin DP plugs or two 20-pin USB plugs for connection to the monitor and to the computer.

Refer to the operating manual for the computer for information on the computer's ports and interfaces.

- ▶ Select the appropriate data cable for your computer.
- ▶ **P series:** Plug a data cable connector to the USB-C, HDMI or Display port socket on the monitor.
B Series: Plug a data cable connector to the HDMI, Display port, DVI or VGA socket on the monitor.



The monitor automatically detects the input when only one signal source is connected.



A High Speed HDMI cable is needed for connection via HDMI.

- ▶ If you are not using the P-series USB-C port, plug the USB 3.0 cable supplied (USB-A to USB-B) into the USB-B port socket (USB 3.2 Gen1, Upstream) and the other end of the cable into a USB-A socket on the computer.
- ▶ Plug the network cable supplied into the socket on the monitor.



A lock (Security Lock) can be mounted in the security slot to protect the monitor against theft. A Security Lock is not included with the monitor at delivery.

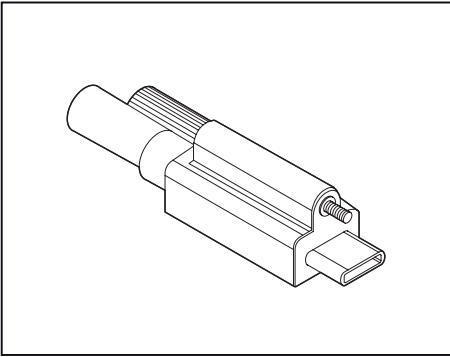
Attaching the cables to the monitoring

B Series

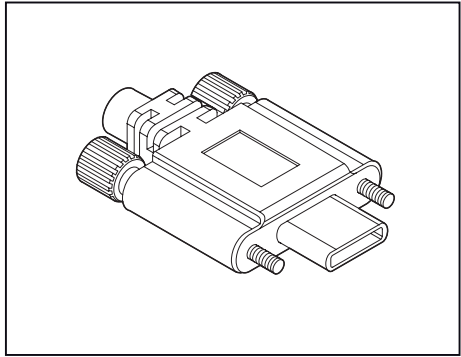
The B-series features a VGA and DVI port with locking connectors according to the respective standard. VGA and DVI cables compliant with the respective standards (not included in the scope of supply, available separately) can be attached.

P Series

The P-series features a USB-C Upstream port with locking connectors as per "USB Type-C Locking Connector Specification (Revision 1.0)". "Single Screw" and "Dual Screw USB Type-C Locking Plug" USB-C cables (not included in the scope of supply, available separately) can be attached.



Single Screw USB Type-C Locking Plug



Dual Screw USB Type-C Locking Plug

- ▶ Attach the cable connector to prevent the cable from accidentally being disconnected.

Connecting cables to the computer

Information on the computer connections and interfaces is contained in the operating manual for your computer.

- ▶ Plug the data cable into the (active) monitor port on the computer.
- ▶ Plug the power connector of the monitor into a properly grounded mains outlet.
- ▶ Plug the power connector of the computer into a properly grounded mains outlet.



If your computer has two monitor ports ("onboard" screen controller and separate graphics card), the monitor port for the separate graphics card is active as standard.



All of the USB ports designated as "Downstream" and the network port are only active while at least one of the two USB ports designated as "Upstream" is connected to a computer.

As soon as a computer gets connected via the USB-C monitor port, the active input signal is switched automatically to USB-C. When the USB-C connection is interrupted, the system automatically switches back to the last active input signal.

Driver installation

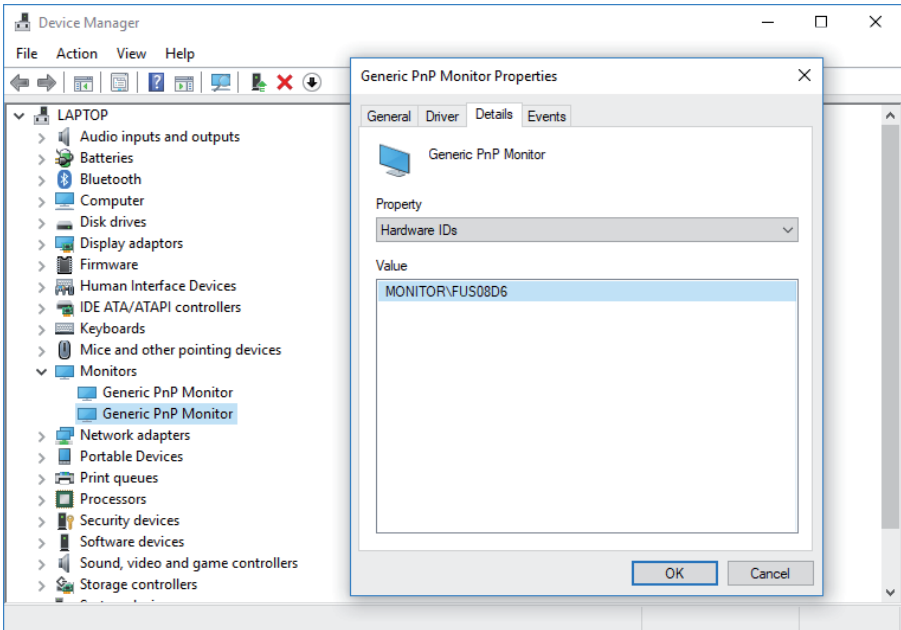


The monitor and network drivers are installed automatically whenever the Microsoft Windows operating system is updated.

- ▶ Switch the monitor on (see "[Switching the device on and off](#)", [Page 24](#)).
- ▶ For manual installation, download the monitor and network drivers from "<http://www.fujitsu.com/fts/download>". Select the relevant model of monitor and operating system for this on the website.
- ▶ Unpack the zip file.

Monitor drivers

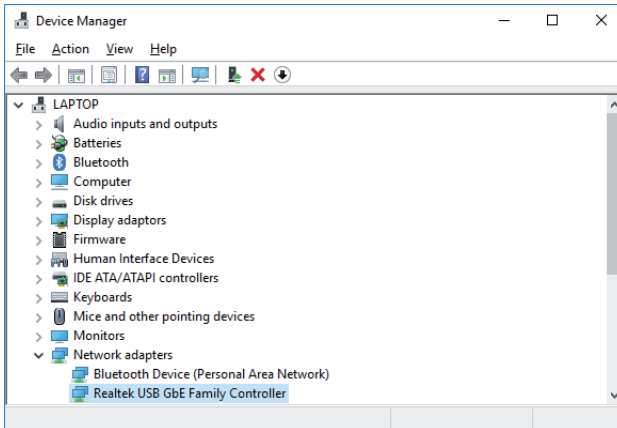
- ▶ Open the *Device Manager* and select the *Monitors* header.
- ▶ Double click on a listed *Generic PnP Monitor* to open the *Properties* window.



- ▶ If more than one *Generic PnP Monitor* device is displayed, check whether the correct device is selected.
To do this, go to tab *Details, Property* and set "Hardware Ids".
"Monitor\FUSxxxx" is displayed under *Value*. Otherwise, select the other *Generic PnP Monitor* device.
- ▶ Click on *Update Driver* in tab *Driver*.
- ▶ Click on *Browse my computer for driver software*.
- ▶ Click on *Browse*, navigate to the unpacked zip file and confirm with *OK*.
- ▶ Click on *Next* and wait until the driver is installed.

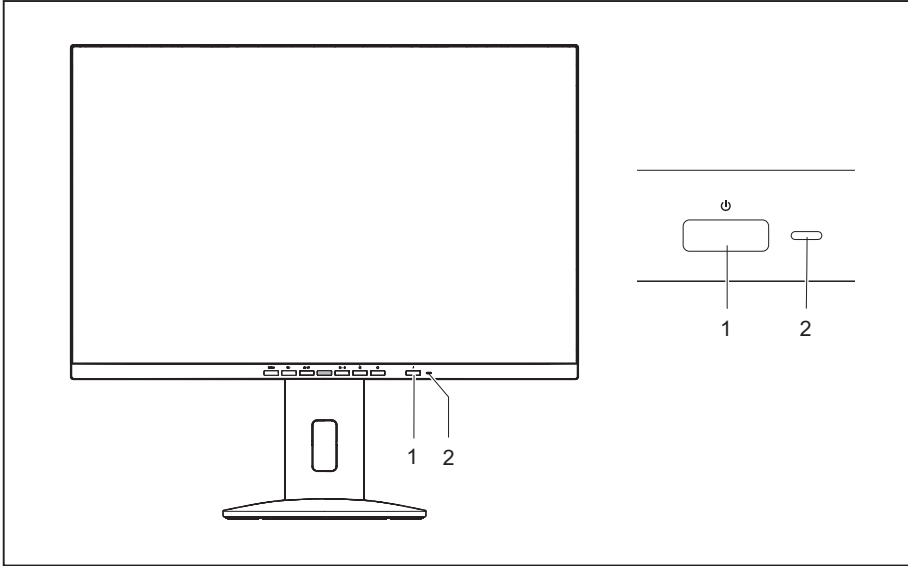
Network drivers

- ▶ Open the directory with the unpacked contents of the network driver.
- ▶ Run the file *setup.exe* or the corresponding installation program and follow the instructions.
- ▶ After successful installation, the device is displayed in the *Device Manager* under the *Network Adapters* header as a *Realtek USB GbE Family Controller*.



Operation

Switching the device on and off



1 = On/off switch

2 = Status LED

The colour of the status LED alters in the following way:

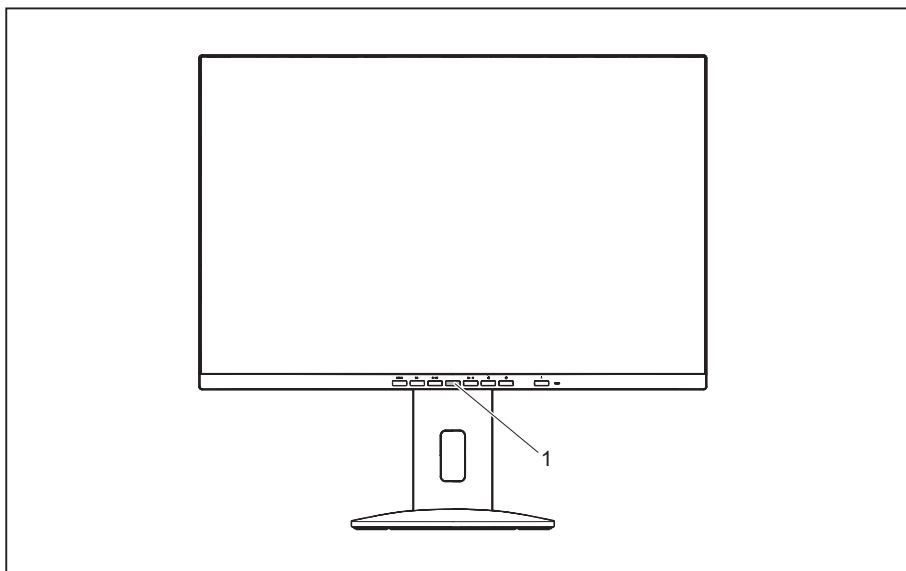
Status LED	Status
blue	Monitor and computer are switched on (ECO mode off).
green	Monitor and computer are switched on (ECO mode on).
orange	Monitor is not receiving a video signal or is in power saving mode. The monitor is in All-In-One mode and the connection to the computer is interrupted.
Glows white	The monitor is in All-In-One mode and the connection to the computer is switched on.
Flashes white	The monitor is in All-In-One mode and the computer is in power-saving mode.
does not light up	Monitor is switched off. The monitor is in All-In-One mode and the computer is powered down.

- ▶ Switch the device on again with the ON/OFF switch (1).



You will find more information about the behaviour of the On/Off switch in All-in-One mode in chapter: ["All-in-one mode", Page 56](#)

Notes on the ambient light sensor and presence sensor



1 = Ambient light and presence sensor

Sensor	Description
Ambient light sensor	If the <i>Auto Brightness</i> function is activated, the ambient light sensor is used for optimum adjustment of the background lighting to the light conditions of the working environment.
Presence sensor	If the <i>Presence Sensor</i> function is activated, the presence sensor is used to gradually reduce the background lighting to a minimum if no object is detected within the specified distance. The time until the background lighting turns completely off can be set under <i>Delay</i> in the OSD submenu.



In order to achieve the best possible results with the presence sensor, observe the following:




- Make certain that no objects are located in the immediate proximity of the presence sensor.
- Recommendation: Adjust your distance to the monitor in the OSD menu. You will find more information on this in chapter ["Advanced setting functions", Page 34.](#)
- Depending on the colour and nature of your clothes, the distance detected may deviate from the setting.
- When the presence sensor is activated, the power consumption during operation is increased minimally.

Changing the monitor settings



The buttons on the control panel have multiple functions. When the OSD menu is active, the current meaning of the buttons is shown directly over the buttons on the edge of the screen.

The display (softkey icon) over the buttons varies depending on the sub-menu chosen.

Key	Function
MENU	Make image and OSD settings / Advanced configuration / Call up monitor information
ECO	Activate/deactivate ECO operating mode
INPUT	Selecting the input signal
MODE	Select display mode/colour temperature / Adjust RGB channels
	Adjust volume
	Adjust brightness/contrast
	Monitor: switching on/off In all-in-one mode: switch the computer on/off

Softkey icon	Function
↑	Selecting the next menu item (sub-menu)
↓	Selecting the previous menu item (sub-menu)
→	Opening the selected sub-menu Going to the next setting Running a function
←	Going to the previous setting
—	Decreasing the set value
+	Increasing the set value
✓	Accepting the applied settings and closing the OSD menu
↶	Return to the parent menu
✕	Exiting OSD menu

Functions of the control panel and the OSD menu

With the buttons on the control panel, you can call up and use the integrated OSD (On-Screen Display) menu.



The English menu names are used in the following description (default setting).

The OSD menu of your device may differ in several ways from the functional scope described.

The softkey icons may deviate from those shown here.

Select OSD language

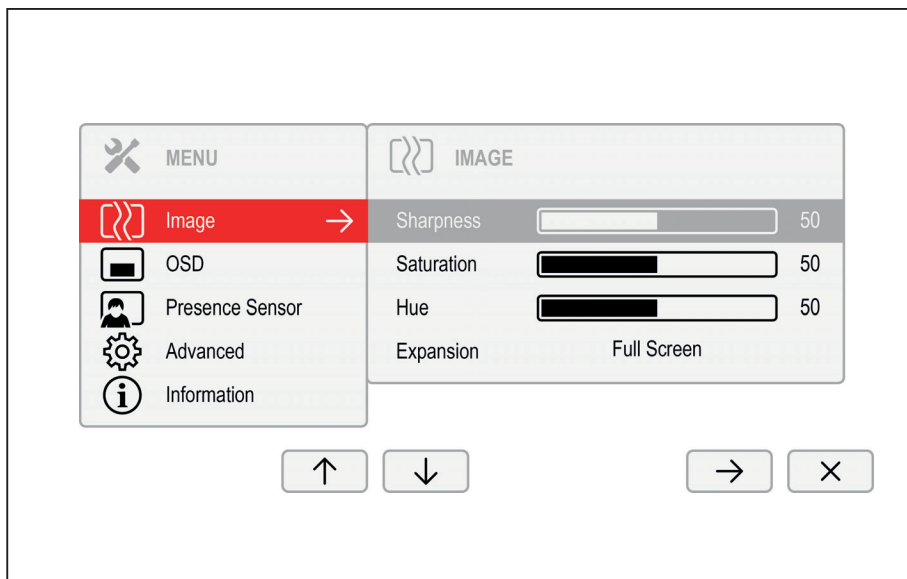
You will be asked to select a language when you first switch on the device:

- ▶ Press the ↑ button or the ↓ button to choose the desired language.
- ▶ Press the ✓ button to confirm.



After selecting the OSD language for the first time, you can change it at any time in the OSD.

Setting screen display

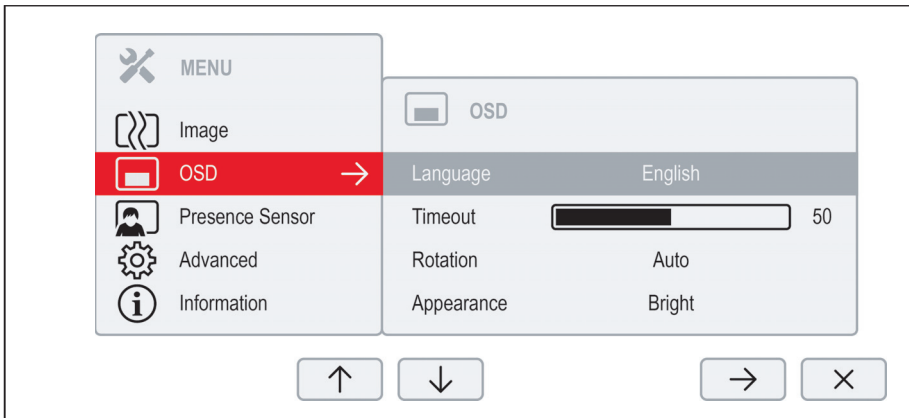


- ▶ Press the **MENU** button to call up the main menu.
- ▶ Press the → button to switch to the *Image* submenu.
- ▶ Press the ↑ / ↓ button to mark a function in the submenu.
- ▶ Press the − / + or ← / → button to make the desired setting.
- ▶ Press the ↶ button to save the settings and return to the main menu.

Function	Description
<i>Sharpness</i>	Setting the picture sharpness Use this function to configure the integrated soft focus or sharpness filter of the monitor. <ul style="list-style-type: none"> • Values below 50 produce a softer picture. • Values above 50 produce a sharper picture.
<i>Saturation</i>	Setting colour saturation You can use this function to reduce or increase the intensity of the colours. This setting only applies for devices with YUV output (e.g. BluRay players).

Function	Description
<i>Hue</i>	<p>Setting the colour tone</p> <p>This function can be used to shift the colour spectrum in order to compensate for a colour fault that may be present.</p> <p>This setting only applies for devices with YUV output (e.g. BluRay players).</p>
<i>Expansion</i>	<p>Adjusting size</p> <p>This function is used to change the type of scaling of low resolutions.</p> <p><i>Full screen</i> = maximum picture size with distortion (no black bands)</p> <p><i>Keep aspect</i> = Maximum picture size without distortion (black bands could appear in one direction)</p> <p><i>1:1</i> = Centered image without scaling (black bands could appear in both directions)</p> <p>The 1:1 option is not available on all models.</p>

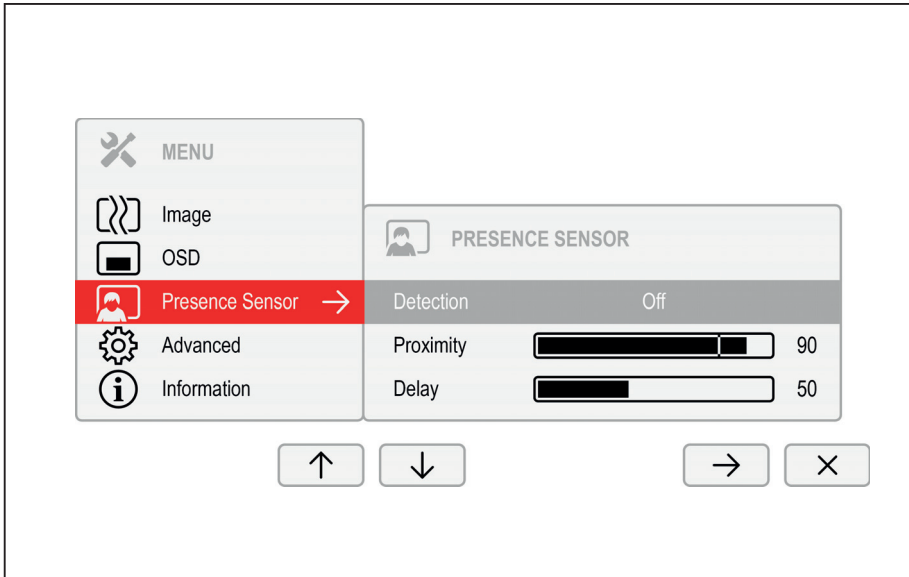
Configuring the OSD menu



- ▶ Press the **MENU** button to call up the main menu.
- ▶ Press the ↓ button and then → to switch to the *OSD* submenu.
- ▶ Press the ↑ / ↓ button to mark a function in the submenu.
- ▶ Press the − / + or ← / → button to make the desired setting.
- ▶ Press the ↶ button to save the settings and return to the main menu.

Function	Description
<i>Language</i>	<p>Selecting the language for the OSD menu</p> <p>With this function you select the language for the OSD menu.</p> <ul style="list-style-type: none"> ▶ Press the → button to arrive at the choice of language. ▶ Press the ↑ / ↓ button to select the desired language. ▶ Press the ✓ button to confirm the language selected or ↶ to leave the language selection option without making any changes.
<i>Timeout</i>	<p>Setting the display duration of the OSD menu</p> <p>With this function you can select a value from 10 to 120 seconds.</p> <p>If the set time expires without a setting being made, the OSD menu is automatically hidden.</p> <p>Where applicable, settings that must be confirmed with the ✓ button are thereby lost.</p>
<i>Rotation</i>	<p>Set the orientation of the OSD menu</p> <p>This function allows the orientation of the OSD menu to be rotated. This makes it easier to read the OSD menu while the pivot function is being used.</p> <p>0° = standard</p> <p>90° = clockwise rotation</p> <p>270° = counter-clockwise rotation</p> <p><i>Auto</i> = orientation of the OSD menu will automatically be matched to the orientation of the monitor.</p> <p>The <i>Auto</i> setting only appears on models with a rotation sensor.</p>
<i>Appearance</i>	<p>Setting the OSD menu display</p> <p>Use this setting to set the OSD menu to <i>Bright</i> or <i>Dark</i> mode.</p> <p>The standard settings depend on the model's case colour. <i>Dark</i> is set as standard for the black TS and WS models.</p>

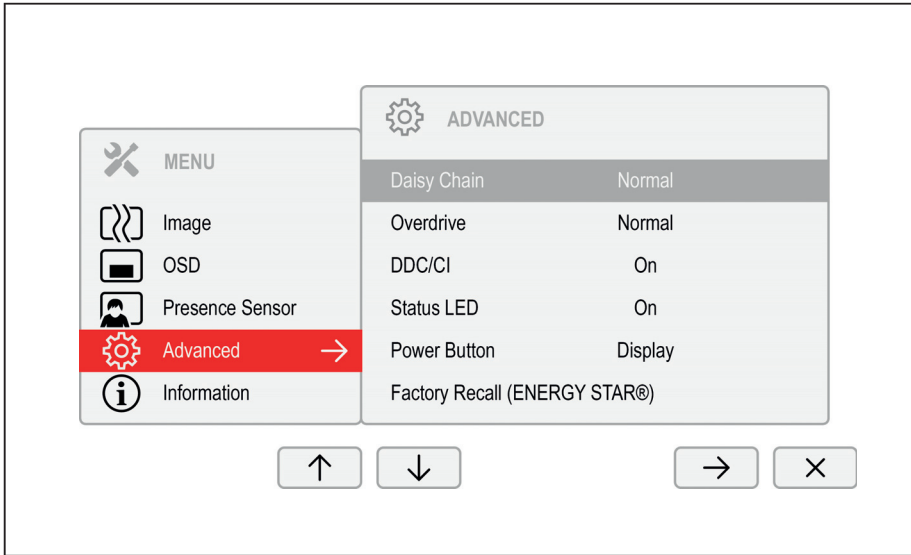
Configuring the presence sensor



- ▶ Press the **MENU** button to call up the main menu.
- ▶ Press the ↓ button and then → to switch to the *Presence Sensor* submenu.
- ▶ Press the ↑ / ↓ button to mark a function in the submenu.
- ▶ Press the — / + or ← / → button to make the desired setting.
- ▶ Press the ↶ button to save the settings and return to the main menu.

Function	Description
<i>Detection</i>	<p>Activating/deactivating the presence sensor</p> <p>This function reduces the monitor's brightness level while you are not using the device.</p> <p>Once the time set in <i>Delay</i> has been reached, the monitor's brightness will be completely switched off.</p> <p>This option only appears if your model has a presence sensor.</p>
<i>Proximity</i>	<p>Setting the distance to the monitor</p> <p>With this function, you can indicate your actual distance to the monitor and optimise detection by the presence sensor.</p> <p>The vertical indicator dynamically displays the detected distance to the monitor. This setting can be used to set the distance within which you want the sensor to react. If the vertical line is outside the setting bar, this will be judged as "absent" by the presence sensor.</p> <p>This setting can only be applied if the <i>Presence Sensor</i> function is active.</p>
<i>Delay</i>	<p>Setting the delay</p> <p>Use this function to configure when the monitor's brightness should completely switch off after the device detects you are no longer using it.</p> <p>This setting can only be applied if the <i>Presence Sensor</i> function is active.</p>

Advanced setting functions



- ▶ Press the **MENU** button to call up the main menu.
- ▶ Press the ↓ button and then → to switch to the *Advanced* submenu.
- ▶ Press the ↑ / ↓ button to mark a function in the submenu.
- ▶ Press the — / + or ← / → button to make the desired setting.
- ▶ Press the ↶ button to save the settings and return to the main menu.

Function	Description
<i>Daisy Chain</i>	<p>Establishing a daisy chain via USB-C</p> <p><i>Normal</i> = up to two monitors in total</p> <p><i>Advanced</i> = more than four monitors in total</p> <p>Important note: When changing this function, the power supply via USB-C will be briefly interrupted!</p> <p>For the <i>Advanced</i> setting, the speed of data transmission via USB-C is reduced from USB 3.1 Gen1 (up to 5 Gbit/s) to USB 2.0 (up to 480 Mbit/s).</p> <p>Important note: Briefly unplug the signal cable if you experience any issues when changing this setting.</p> <p>This option only appears if your model supports daisy chain and USB-C is selected as input signal.</p>
<i>Overdrive</i>	<p>Configuring an increased reaction time</p> <p><i>Off</i> = no increase in speed</p> <p><i>Normal</i> = recommended increase in speed (~7 ms)</p> <p><i>Advanced</i> = maximum increase in speed (~5 ms)</p> <p>This function can be used to improve the focus in fast moving images.</p> <p>This setting can only be configured in <i>Video</i> or <i>Custom</i> application mode.</p>
<i>DDC-CI</i>	<p>Enable/disable Display Data Channel - Command Interface</p> <p>This function allows data to be exchanged via the connection between the PC and the display.</p>
<i>Status LED</i>	<p>Enable/disable Status LED</p> <p>With this setting, you can switch the status LED on the monitor on and off.</p>
<i>Power Button</i>	<p>Setting the function of the On/Off switch</p> <p>With this setting, you can decide whether to use the On/Off switch on the monitor to switch the <i>display</i> or the connected <i>computer</i> on and off.</p> <p>This option only appears if <i>USB-C</i> was selected as an input signal.</p>
<i>Factory recall</i>	<p>Activate the factory settings</p> <p>With this function all settings are reset to the factory settings.</p> <ul style="list-style-type: none"> ▶ Press the → button to run the function. ▶ Press the ✓ button to confirm or the ✕ button to cancel. <p>The language selection menu appears.</p> <p>With a VGA data cable, the message <i>Auto Processing</i> is displayed.</p>

Displaying information



- ▶ Press the **MENU** button to call up the main menu.
- ▶ Press the **↑** button to call up the *Information* window.

Details such as the model designation, serial number, firmware version, resolution, H/V frequency and various operating modes are displayed.

Activate/deactivate ECO operating mode



The power consumption of the device can be decreased by reducing the brightness of the picture.

- ▶ Press the **ECO** button to switch ECO operating mode on or off.

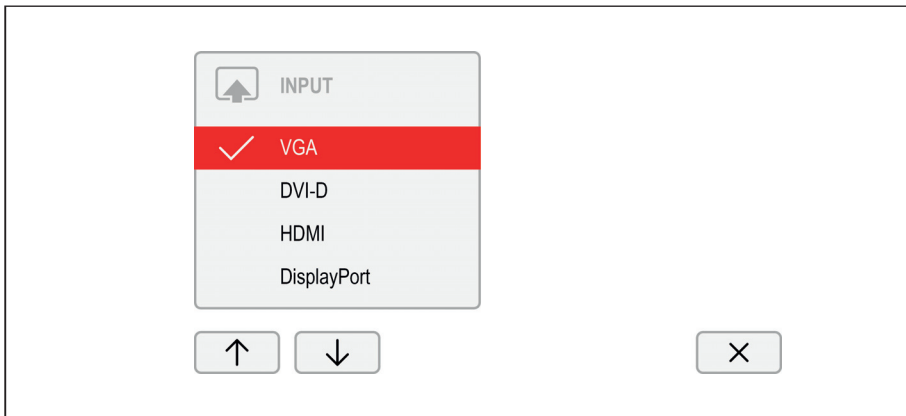
↳ The message *ECO Mode on* or *ECO Mode off* is displayed.

If ECO mode is activated, a brightness is used that is the optimum from both the ergonomic and ecological aspects.

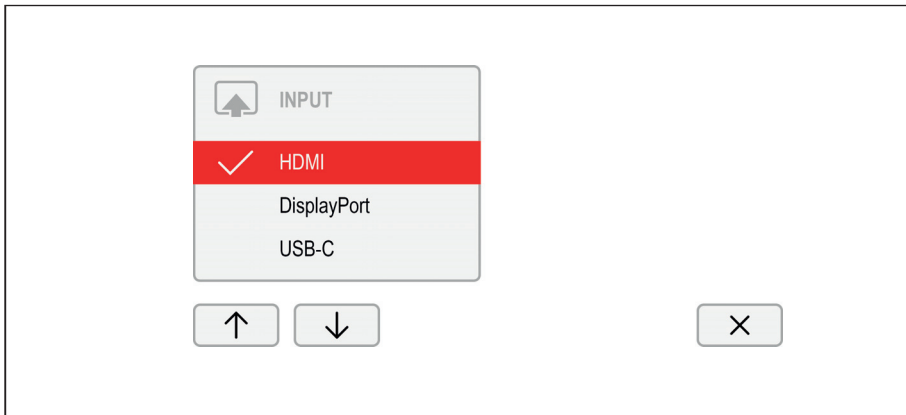
If ECO mode is deactivated, the monitor's highest brightness setting can be used. This will increase power consumption.

Selecting the input signal

B-line



P-line



- ▶ Press the **INPUT** button to open the *INPUT* setting window.
- ▶ Press the **↑ / ↓** button to select the desired monitor port.
- ▶ Press the **✓** button to confirm the selected monitor port or **×** to close the window without making any changes.



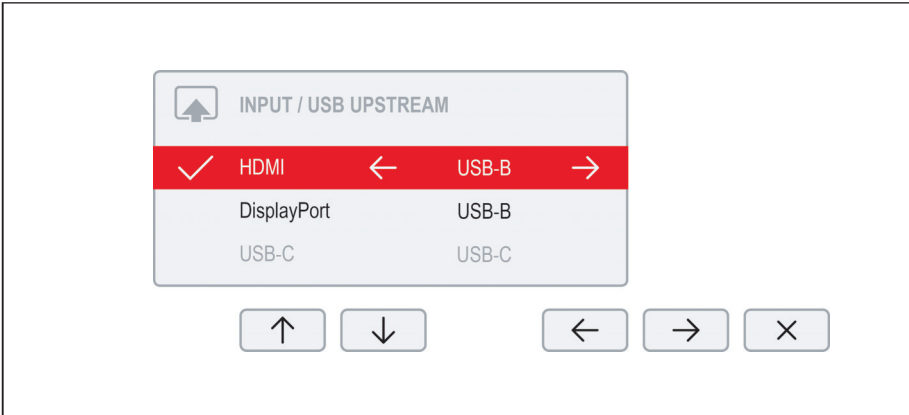
If the selected input signal does not deliver an image, the monitor shall change this automatically.

In the following cases an automatic change of the input signal is disabled:

- When the "Daisy-Chain" function is activated.
- If the input signal for the "USB-C" monitor connection is selected and the *Power Button* settings is set to "Computer".

Press the button **INPUT** To call up the *INPUT* settings window if the monitor is not displaying an image and is in power-saving mode.

If on the USB-C upstream port a sheer USB data connection is detected, an enlarged setting window will be displayed.



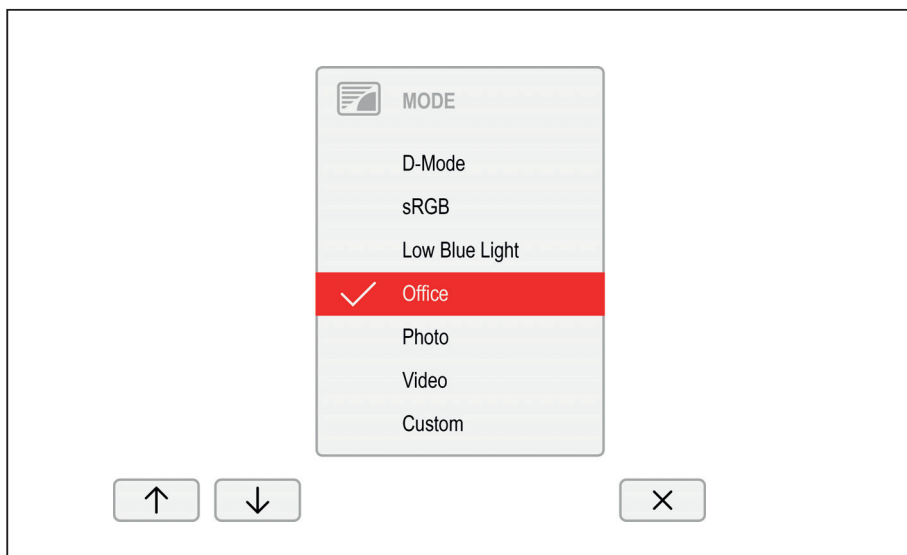
- ▶ Press the ↑ / ↓ buttons to select the desired monitor port.
- ▶ Press the ← / → buttons to change the assignment of the USB upstream to the relevant video signal.

The built-in KVM will be switched based on the assignments set.



For further information on the KVM function, please refer to chapter "[KVM feature](#)", [Page 55](#).

Selecting the application mode



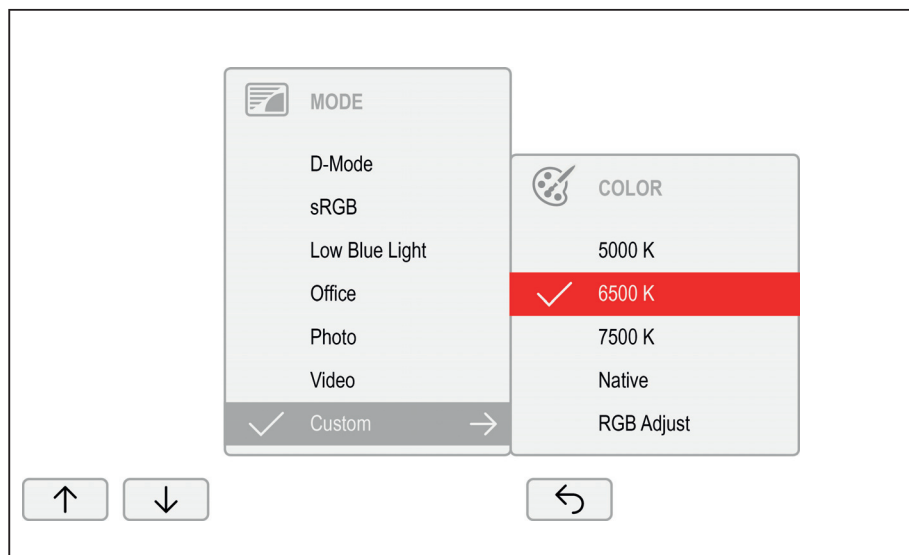
- ▶ Press the **MODE** button to open the *MODE* setting window.
- ▶ Press the \uparrow / \downarrow button to select the desired application mode.
- ▶ Press the \checkmark button to confirm the selected application mode or \times to close the window without making any changes.

Function	Description
<i>D-Mode</i>	Mode for Digital Imaging and Communication in Medicine (DICOM) Colour temperature equal to 7500 K, specially calibrated gamma curve. This setting only appears on models that support the DICOM picture format.
<i>sRGB</i>	Mode for applications in sRGB colour space Colour temperature and brightness according to the sRGB standard.
<i>Low Blue Light</i>	Mode with enhanced blue light reduction Warm tints, reduced brightness.
<i>Office</i>	Mode for everyday office applications Colour temperature equals 6500 K, ECO operating mode active.
<i>Photo</i>	Mode for the display of photos Increased picture definition and colour saturation.
<i>Video</i>	Mode for the display of videos Enhanced reaction time (overdrive), dynamic contrast (ACR).
<i>Custom</i>	Mode for special application purposes Free choice of colour temperature, advanced configuration capabilities.



The brightness set in Mode is stored under *Office*, *Photo*, *Video* and *Custom*.

Setting colour temperature and colours

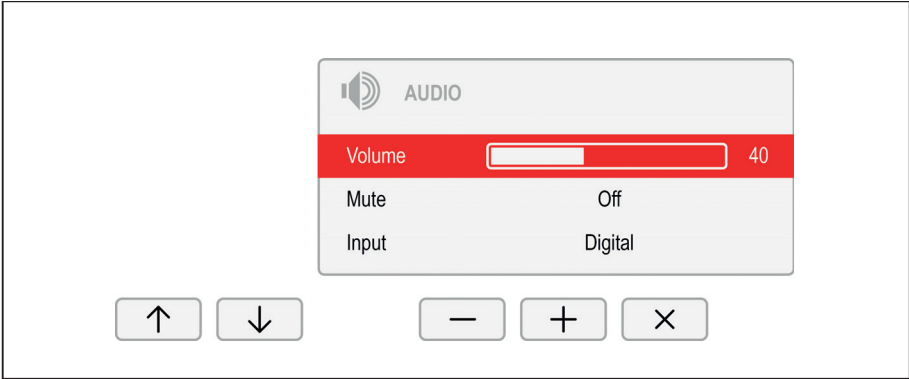


- ▶ Press the **MODE** button to open the *MODE* setting window.
- ▶ Press the \uparrow / \downarrow button to select *Custom* mode.
- ▶ Press the \rightarrow button to arrive at the choice of colour temperature.
- ▶ Press the \uparrow / \downarrow button to select the desired colour temperature.
- ▶ Press the \checkmark button to confirm the selected colour temperature or \leftarrow to close the window without making any changes.

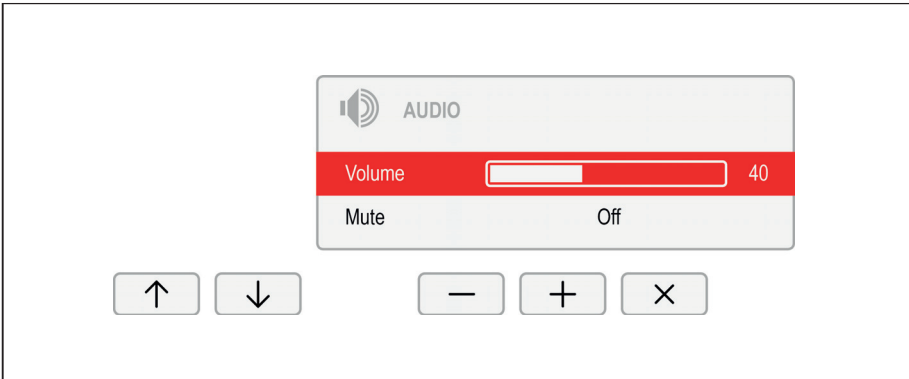
Function	Description
5000 K	Select the colour temperature
6500 K	The "warmth" of the screen colours is set using the colour temperature. The colour temperature is measured in K (= Kelvin).
7500 K	
Native	In the <i>Native</i> and <i>Custom Color</i> settings, the full colour space of the LCD panel can be used.
RGB Adjust	<p>You can change the colour ratios of the primary colours (red, green, blue) as required using this function.</p> <ul style="list-style-type: none"> ▶ Press the \rightarrow button to arrive at the selection of colour channels. ▶ Press the \uparrow / \downarrow button to select the desired colour channel. ▶ Press the $-$ / $+$ button to make the desired setting. ▶ Press the \leftarrow button to save the settings and return to the previous menu.


Adjusting the volume

B-line




P-line



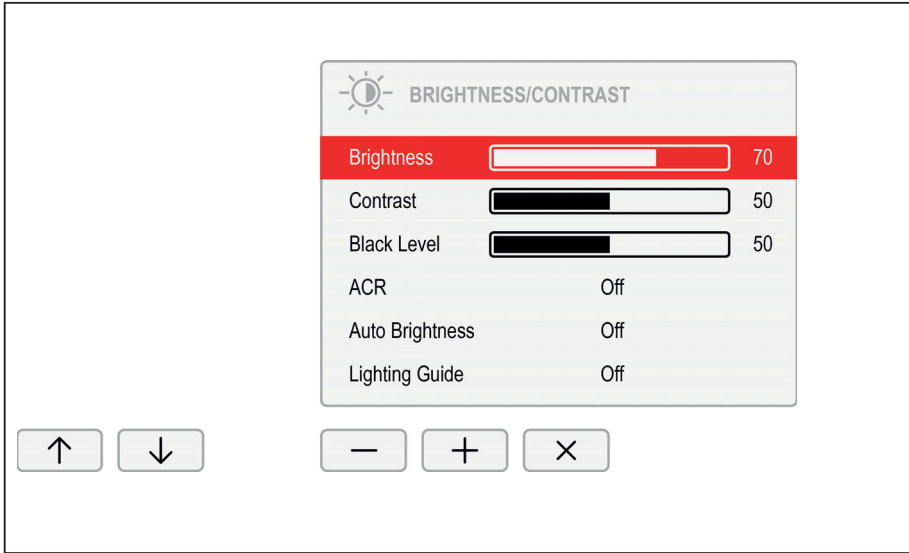
- ▶ Press the  button to open the *AUDIO* setting window.
- ▶ Press the $- / +$ or \leftarrow / \rightarrow button to make the desired setting.
- ▶ Press the \times button to save the settings and close the menu.

Function	Description
<i>Volume</i>	Set the volume for playback with the integrated loudspeakers
<i>Mute</i>	Switch the loudspeakers off or on
<i>Input</i>	Change the audio input signal to another source The setting only appears when more than one audio input signal is possible (e.g. display port and AUDIO-IN socket).



Press on the  button to easily switch the speakers on and off.

Adjusting the brightness and contrast



- ▶ Press the ☀ button to open the *BRIGHTNESS/CONTRAST* setting window.
- ▶ Press the $- / +$ or \leftarrow / \rightarrow button to make the desired setting.
- ▶ Press the \times button to save the settings and close the menu.

Function	Description
<i>Brightness</i>	Set the brightness of the display With this function you change the brightness of the background lighting.
<i>Contrast</i>	Set the contrast of the display With this function you modify the contrast of bright colour tones. If the contrast is set too high, bright surfaces can no longer be distinguished from very bright surfaces. If the contrast is set too low, the maximum brightness will not be achieved. Please note that, if you change this setting, correct colour representation can then no longer be assured.
<i>Black level</i>	Setting the black level of the display With this function you modify the contrast of dark colour tones. Please note that, if you change this setting, correct colour representation can then no longer be assured.

Function	Description
<i>ACR</i>	<p>Enable/disable dynamic contrast</p> <p>This function improves the contrast by automatically controlling the background lighting in relation to the image being displayed.</p> <p>This setting can only be configured in <i>Office</i>, <i>Video</i> and <i>Custom</i> application mode.</p> <p>As soon as ACR is enabled, <i>Auto brightness</i> is automatically disabled.</p>
<i>Auto Brightness</i>	<p>Enable/disable automatic control of the brightness</p> <p>This function is used to automatically control the brightness of the background lighting using the ambient light sensor.</p> <p>This setting only appears on models with an ambient light sensor and can only be enabled in <i>Office</i>, <i>Photo</i> or <i>Custom</i> application mode.</p> <p>As soon as <i>Auto brightness</i> is enabled, <i>ACR</i> is automatically disabled</p>
<i>Lighting Guide</i>	<p>Enable/disable advice on workplace lighting</p> <p>With this function, advice is displayed if the ambient light at the workplace does not meet the ergonomic recommendations for working at the computer screen.</p> <p>This setting only appears on models with a light sensor.</p>
<i>Auto level</i>	<p>Adjust the signal level</p> <p>With this function you can automatically set the contrast.</p> <p>Press the → button to run the function.</p> <p>This setting only appears with an analogue video signal (e.g. VGA).</p>

Locking the OSD menu


The OSD menu can be locked to prevent accidental or unauthorised changes to the monitor settings.


- ▶ Press the **MENU** button and the ON/OFF button at the same time and keep them pressed for several seconds.
- ↳ The message *OSD locked / unlocked* is displayed.



Please proceed in the same manner to release the locked OSD menu again.

Disabling audio settings

The  button can be disabled to prevent the speakers from accidentally being activated, or the volume from changing.

- ▶ Press the  button and the ON/OFF button at the same time and keep them pressed for several seconds.

↳ *AUDIO locked / unlocked* will appear.



Please proceed in the same manner to release the disabled audio menu again.

Lock the ON/OFF button

The ON/OFF button can be locked to prevent accidental or unauthorised changes to the monitor settings.

- ▶ Press the buttons **ECO** and **INPUT** at the same time and keep them pressed for a few seconds.

↳ The message *Power button locked / unlocked* is displayed.



To remove the locking of the ON/OFF button again, proceed in the same way.

Using the Daisy Chain function

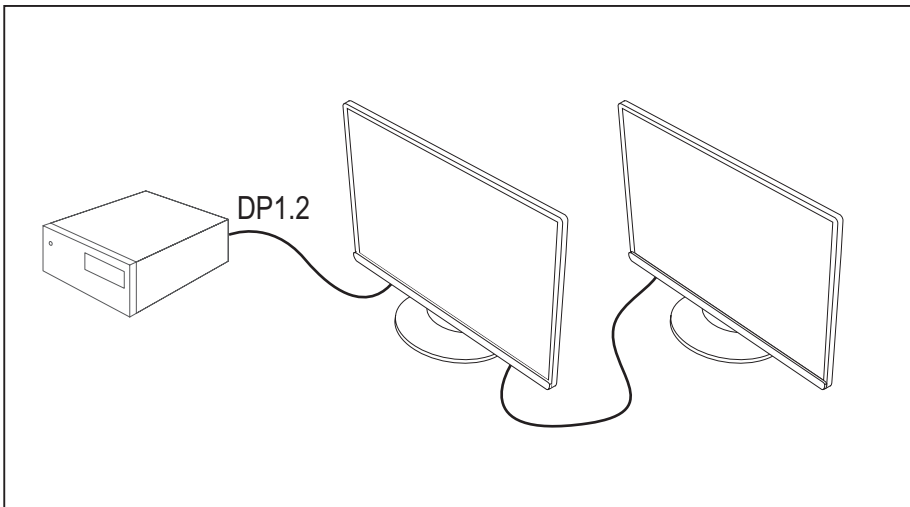
With the daisy chain function, you can connect up to four monitors in sequence to a display port output on your graphics card. The maximum possible number of monitors depends on the resolution:

Screen resolution	Maximum
1920x1080 (FHD)	4 monitors
1920x1200 (WUXGA)	
2560x1440 (QHD)	2 monitors
3440x1440 (UWQHD)	



Ensure that your graphics card supports DP 1.2 or the USB-C port supports "Displayport Alternate Mode" before activating the daisy chain function. Failing this, it is possible that your graphics card may no longer recognise the monitor.

The maximum possible number of monitors can be limited by the graphics card used or by the graphics card drivers used, as well as by their settings (e.g. display refresh rate, colour depth).



- ▶ Remove the cover of the "DP OUT" port.
- ▶ Connect the graphics card to the "DP IN" port or to the USB-C port (underside) on the first monitor.
- ▶ In each case, connect the next monitor via the "DP OUT" port.



As soon as the daisy-chain function is active, automatic detection of other signal sources (e.g. HDMI) is disabled.

- ▶ Press the button **INPUT** to change the input signal manually.
- ↳ If switched to an input signal that does not support a daisy chain, the daisy chain function is disabled automatically.

Additional information

Programme "DisplayView"

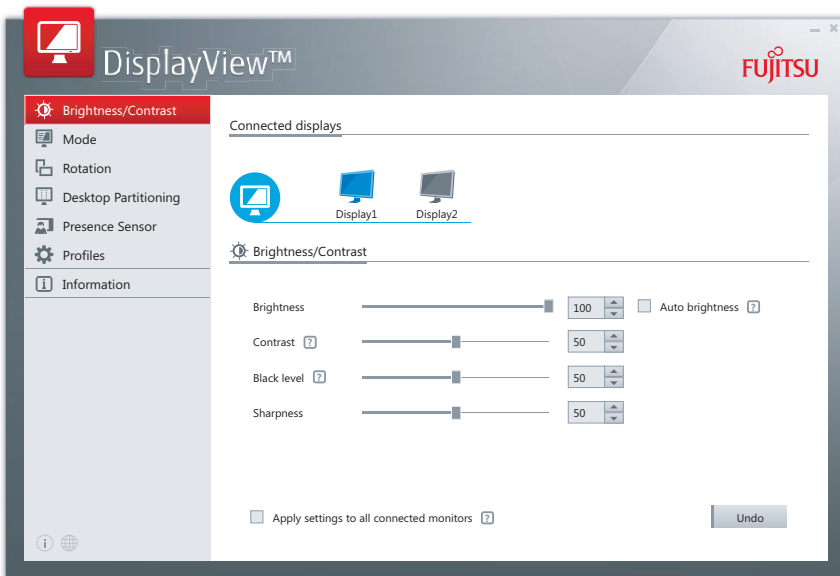
DisplayView is a program for Microsoft Windows operating systems, which provides the user with a simple user interface for adapting functions that are normally assigned to the OSD.

Changes to brightness, contrast, image position and other default monitor settings can be made easily and intuitively.

The program also supports extended functions such as Auto-Rotation and Desktop Partitioning.



Your device may differ from the described scope of function in some areas.



DisplayView Can be downloaded here: ["www.fujitsu.com/fts/displayview"](http://www.fujitsu.com/fts/displayview)

Function overview:

- OSD management for screens equipped with DDC/CI
- OSD direct access for quick changes
- Settings for power saving mode and security settings for the presence sensor (only for models with presence sensor)
- Automatic rotation and partitioning of screen contents
- Supports analogue and digital monitor ports

- Supports up to 4 monitors
- Supports the Microsoft Windows 10 operating system

Presence sensor

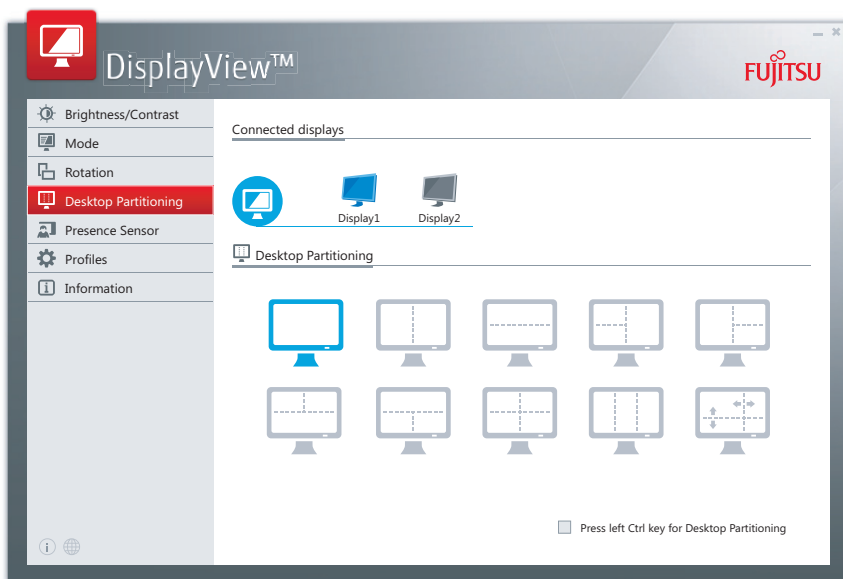
In the presence sensor submenu, you can activate and configure the power saving (PC Standby) and security (Lock PC) settings based on the user's presence status.

Rotation function

The rotation menu allows you to rotate the screen content pursuant to the screen orientation.

Desktop partitioning








The desktop area of the Microsoft Windows operating system can be divided into several areas into which program windows can be fitted automatically by adjusting their size.










Power Management

If your computer is equipped with power management (power-saving mode), the monitor can fully support this function. Here the monitor does not distinguish between the individual energy-saving modes of the computer (standby mode, suspend mode and OFF mode), as it is capable of immediately switching into the mode with the highest energy-saving effect.








B2410 Wx

Mode	State	Power consumption		
		Typical	Maximum	Status LED
Power On – maximum operation	Maximum brightness / with USB and audio	62.8 W	< 68 W	
Power On – Max. Brightness	Maximum brightness / without USB and audio	24.8 W	< 29 W	
Power On – Normal mode	Without USB and audio	14.6 W	< 17 W	
Power On – Energy Star	Factory settings, without USB and audio	15.5 W	–	
ECO	Without USB and audio	14.6 W	–	
Readiness (standby)	Without USB devices connected	0.21 W	< 0.5 W	
Off	Without USB devices connected	0.19 W	< 0.3 W	

P2410 Tx

Mode	State	Power consumption		
		Typical	Maximum	Status LED
Power On – maximum operation	Maximum brightness / with USB and audio	167 W	< 193 W	
Power On – Max. Brightness	Maximum brightness / without USB and audio	26 W	< 36.7 W	
Power On – Normal mode	Without USB and audio	21 W	< 30.7 W	
Power On – Energy Star	Factory settings, without USB and audio	15 W	–	
ECO	Without USB and audio	21 W	–	
Readiness (standby)	Without USB devices connected	0.28 W	< 0.5 W	
Off	Without USB devices connected	0.26 W	< 0.3 W	

P2410 Wx

Mode	State	Power consumption		
		Typical	Maximum	Status LED
Power On – maximum operation	Maximum brightness / with USB and audio	175 W	< 193 W	
Power On – Max. Brightness	Maximum brightness / without USB and audio	28 W	< 39 W	
Power On – normal mode	Without USB and audio	23 W	< 33 W	
Power On – Energy Star	Factory settings, without USB and audio	17 W	–	
ECO	Without USB and audio	23 W	–	
Readiness (standby)	Without USB devices connected	0.28 W	< 0.5 W	
Off	Without USB devices connected	0.26 W	< 0.3 W	

If the computer detects inactivity (no input) it sends an appropriate signal to the monitor to reduce the power consumption (power saving mode). The status LED of the monitor changes colour to show the change in status. ECO operation is the pre-set factory default.

Once an input is made at the computer the screen contents are restored.



For detailed information on how energy-saving mode operates, please refer to the operating manual or technical manual of the computer.



For maximum energy efficiency, the *ACR* (Advanced Contrast Ratio) OSD setting is activated by default. Deactivate the *ACR* function to achieve an optimised screen appearance.

USB Power Delivery (USB-PD)

USB-PD is a function defined by the USB Implementers Forum, Inc., in accordance with the current specification of USB-PD Version 2.0. It provides a way to deliver current via the USB-C cable, and charge power of up to 95 W, a convenient way for you to recharge your Notebook or Tablet.

For this, the monitor must be in operating mode, readiness mode or All-in-One mode. No USB-PD is possible when disconnected.



To ensure security and compatibility, only the supplied USB-C cable or an equivalent certified USB-C cable must be used.

The USB-PD function is protected by an electrical overcurrent device. If current exceeds 4.75 A, USB-PD is switched off as a precautionary measure. In this case, disconnect the device, check it for defects and reconnect it to be able to use USB-PD again.



This monitor was tested using systems developed by FUJITSU, requiring power delivery of max. 95 W via USB-PD. For other systems that only accept their own brand of USB-PD charging device due to specific power delivery directives, the USB-PD support for this monitor may be limited. Please note that any restriction of this kind on the system will be due to the brand involved.

On the manufacturer's website of your Notebook or Tablet, check that the latest firmware is installed for your USB-PD controller. By installing more recent USB-PD controller firmware, you can avoid compatibility problems with charging operations.

Only one USB port on this monitor supports USB Power Delivery with up to 95 W. The other USB ports deliver conventional USB charge current. You can identify proper connection by this symbol:

Symbol	Port	Power supply
	USB-C	up to 95 W (USB-PD)
	USB-C	up to 15 W
	USB-A	up to 4.5 W

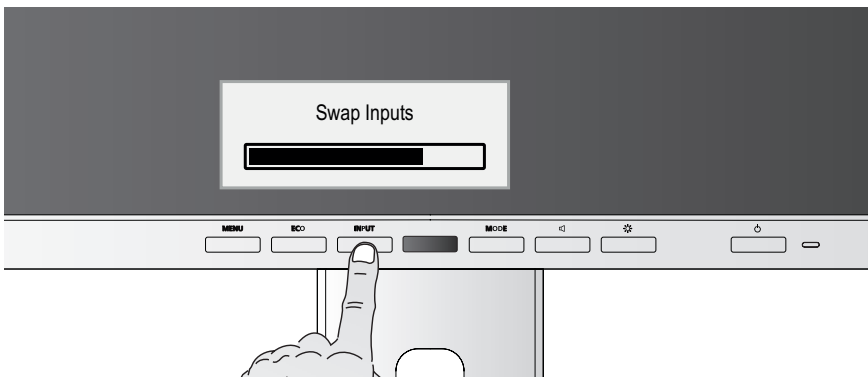
KVM feature

Your monitor has a KVM function. This involves the two USB ports designated as "Upstream" being switched over in response to the selected input signal.

Input signal	USB-Upstream
HDMI	USB-B
Display port	USB-B
USB-C	USB-C

This enables you to switch or 'swap' between any peripherals connected to the monitor and the integrated network port between two computers.

- For more convenient switching between two computers, press and hold down the key **INPUT** until the progress bar for the *Swap Inputs* function (switch between inputs) has reached 100%. The monitor switches between USB-C and the other input signal, i.e. the one used most recently.



If data carriers are connected to the monitor, it is advisable before changing the input signal to disable the *Remove hardware safely* function to prevent the loss of data.



The *Swap Inputs* function is only enabled if a computer is connected to both of the USB ports designated as "Upstream".

All-in-one mode



The functions described here can only be assured in combination with selected FUJITSU Notebooks, Tablets and PCs that have a native USB-C connection with integrated display port support (e.g. ESPRIMO G, LIFEBOOK, STYLISTIC).

The following three functions govern All-in-One operation.

- Continuous power supply for the system via the monitor
- Switching the PC on and off using the On/Off switch on the monitor
- System status displayed by the status LED on the monitor

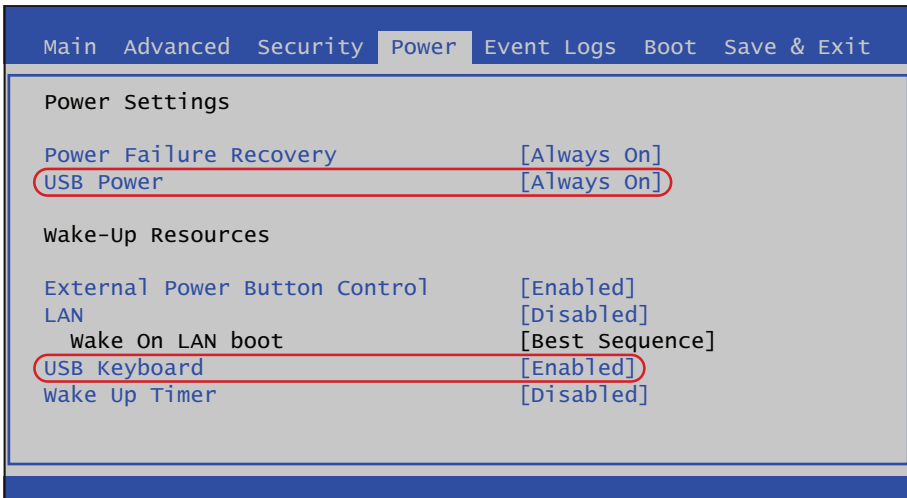


Ensure that your system has the very latest *BIOS* version.

For further information about opening the "BIOS" settings, please consult the handbook for your system.

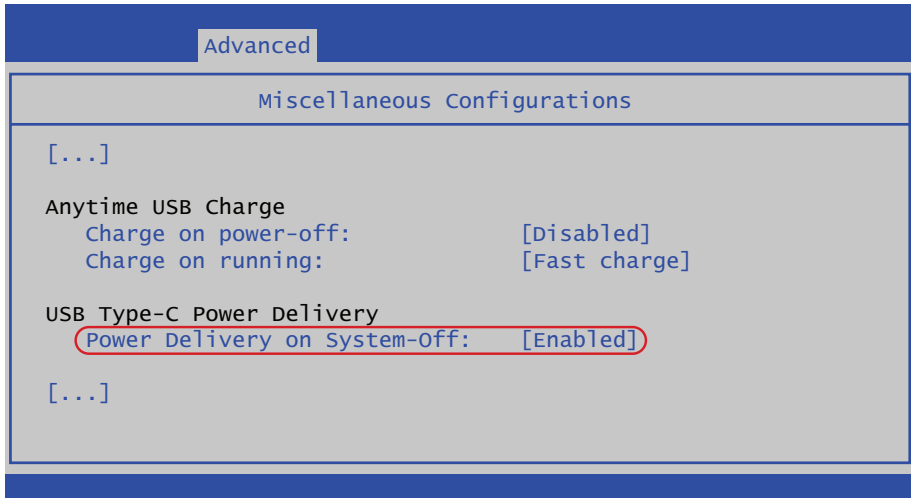
ESPRIMO G

To use All-in-One operation to its full extent, perform the following settings:



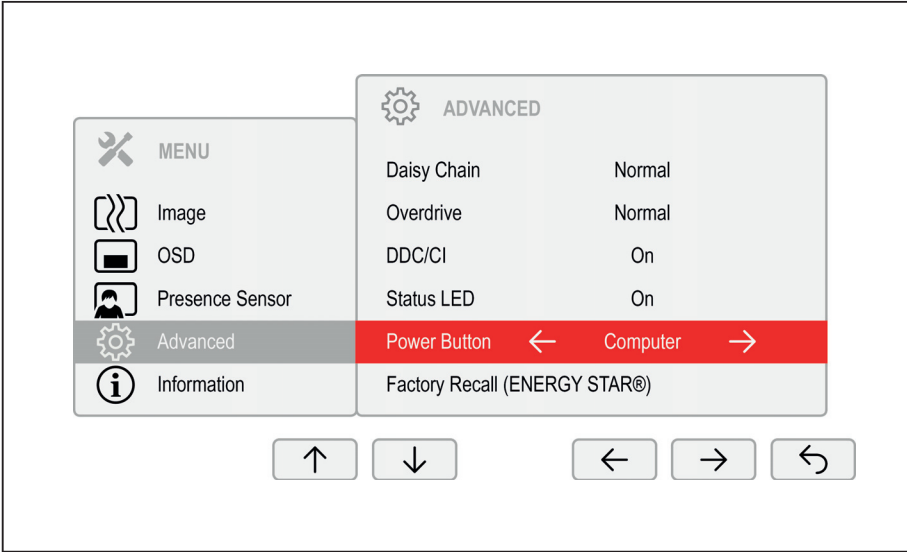
- ▶ In the BIOS settings on your PC, open the *Power* header where you then set *USB power* to *Always On* and *USB Keyboard* to *Enabled*.

LIFEBOOK / STYLISTIC



- In the BIOS settings of your system, open the *Advanced - Miscellaneous Configurations* header and set *Power Delivery on System-Off* there to *Enabled*.

Monitor

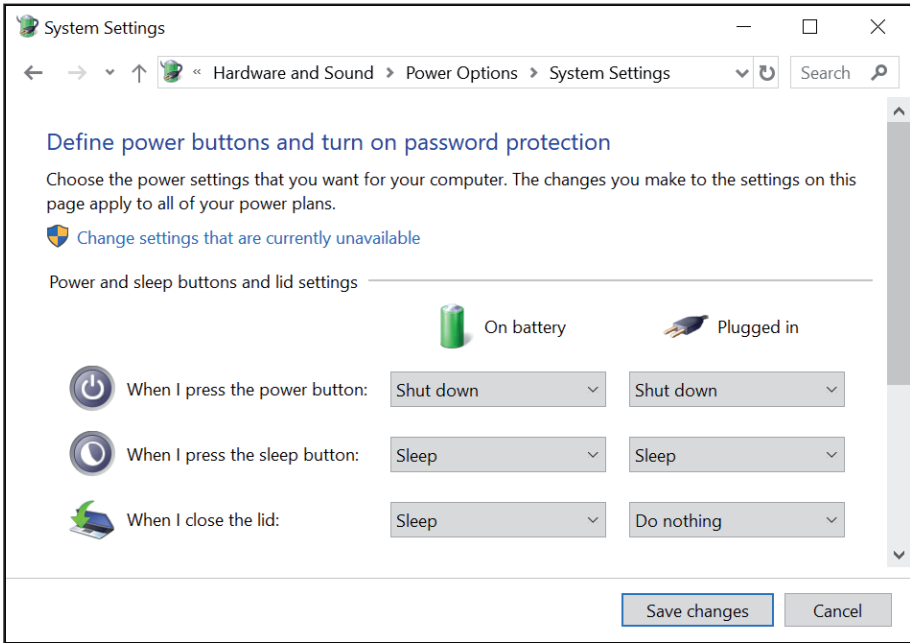


- ▶ In the OSD settings of your monitor, open the *Advanced* header and set the *Power Button* to *Computer*.



By activating All-In-One mode, power consumption of the monitor increases in power-saving ('Sleep') mode.

Operating system



- ▶ In the settings of the Microsoft Windows operating system, open the *Power options - System settings* header and set the desired response characteristics of the On/Off switch.



- ▶ For the *Power button* function, press and hold down the On/Off switch on the monitor for more than 2 seconds.



- ▶ For the *Sleep button* function) press the On/Off switch on the monitor and hold it down for less than 2 seconds.

If the system connected via the USB-C is in power-saving mode, the status LED can show you whether the system is fully compatible with All-In-One mode:

Status LED	Meaning
Flashing at 1-second intervals	Your system is completely compatible with the All-In-One mode. In any status, you can turn the system on and off using the On/Off switch on the monitor.
Flashing at 3-second intervals	Your system is only compatible with the All-In-One mode to a limited extent. It is not possible from every status to switch on the computer using the On/Off switch.

Network port

The P-line models feature an integrated RJ45 interface for Gigabit Ethernet.

Initial startup

- ▶ Install the network driver currently approved for your operating system. Please refer to section ["Network drivers", Page 23](#) for further information.
- ▶ Use a patch cable (cat-5 or better) to connect the network connection to the local network (LAN).
- ▶ Use one of the available USB Upstream ports to connect your system to the monitor.
- ↳ The network connection will automatically be activated.



The network connection is split when the input signal is switched and connected to the other USB Upstream port via the KVM feature. Accordingly, end any current data transmissions or wait until they are complete before switching to avoid any loss of data.



The bandwidth of the network connection will be reduced to ~300 Mbit if the OSD setting is changed from *Daisy Chain* to *Advanced*.

Wake On LAN (WOL)

The system can be launched by the monitor's network connection using a "Magic Packet". In order to do so, your system needs to support Wake-on-LAN via an external USB network controller.

- ▶ Click on *Network Adapters* in the device manager and double click on the *Realtek USB GbE Family Controller* device settings.
- ▶ Switch to the *Power Management* tab.
- ▶ Enable the options *Allow this device to wake the computer* and *Only allow a magic packet to wake the computer*.
- ▶ Click on *OK*.
- ↳ It is now possible to wake the system from standby mode (S3).
- ▶ With selected Fujitsu LIFEBOOK models, it is possible to wake the system from a shutdown state (S5).
Enable all-in-one mode. Please refer to section ["All-in-one mode", Page 56](#) for further information.
- ▶ Enable *Wake on LAN from USB Type-C Port Replicator* in the system BIOS under the *Advanced* menu.
- ↳ It is now possible to wake the system from a shutdown state (S5).

MAC Address Pass Through (MAPT)

With selected Fujitsu LIFEBOOK (9th generation onwards), it is possible to transfer the MAC address from the LIFEBOOK to the monitor's network controller. In order to do so, enable the corresponding feature in your system's BIOS.

Preboot Execution Environment (PXE)

In order to use PXE via the monitor's network connection, ensure that the system BIOS supports *Realtek USB GbE*.

WebCam and Infrared Camera

A square icon with a lowercase letter 'i' inside, used to denote an information note.

Depending on the device variant, your device may feature an integrated webcam with a microphone.

Your system's webcam is an infrared camera that allows authentication with Microsoft Windows Hello.

Depending on the software used, you can use your Webcam to take pictures, record video clips or take part in web chats.

The WebCam has its own status indicator. The indicator lights up when the WebCam is switched on.

The webcam has a sliding shutter with which the camera can be covered.

- The picture quality depends on the lighting conditions and the software being used.
- You can only operate the webcam with a particular application (e.g. an Internet telephony program or a video conferencing program which supports a webcam).
- The webcam automatically adjusts itself to the current light level. For this reason the LCD screen may flicker while the light level is adjusted.

A square icon with a lowercase letter 'i' inside, used to denote an information note.

Further information on using the webcam and on the additional settings which are possible for your webcam can be found in the help function of the program which uses the webcam.

Low blue light function

This monitor has a "low blue light" function, which can be selected in the OSD menu. This "low blue light" function reduces the blue light emission of the monitor to a minimum. In this way, the device complies with the "low blue light" certification of the Technical Inspection Association.

LED backlights no longer emit blue light as a conventional source of white light.

Further information can be found in Chapter ["Selecting the application mode", Page 39](#).

The viewing distance to the monitor should be approximately 50 cm. Further information can be found in Chapter ["Setting up an ergonomic video workstation", Page 12](#).

When working continuously at a display screen, it is recommended that you take a five minute break every hour. During these breaks, do eye exercises to relax your eyes.

To prevent eye strain and dryness, focus regularly on objects in the distance.

colour adjustment, ergonomic



If you select colours for the monitor in your application programmes, take note of the information below.

The primary colours blue and red on a dark background do not produce the minimum required contrast of 3:1 and are therefore not suitable for continuous text and data entry.

When using several colours for characters and background and giving the primary colours full modulation, you can obtain very suitable colour combinations (see the following table):

Background	Characters							
	black	white	purple	blue	cyan	green	yellow	red
black		+	+	-	+	+	+	-
white	+		+	+	-	-	-	+
purple	+	+		-	-	-	-	-
blue	-	+	-		+	-	+	-
cyan	+	-	-	+		-	-	-
green	+	-	-	+			-	-
yellow	+	-	+	+	-	-		+
red	-	+	-	-	-	-	+	

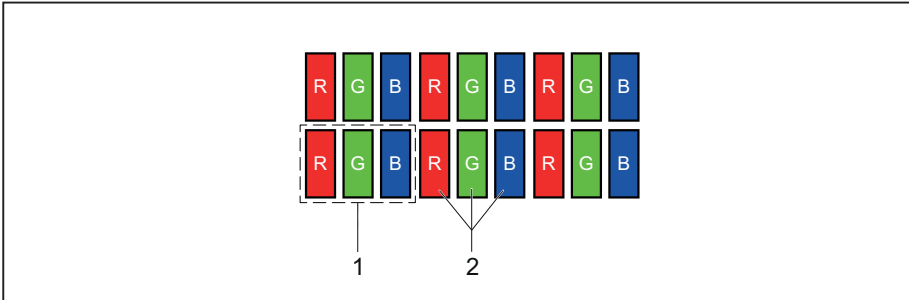
+ Colour combination very suitable

- Colour combination not suitable because colour hues are too close together, thin characters are not identifiable or rigorous focusing is demanded of the human eye.

Explanatory information about standard ISO 9241-307

Permanently unlit or lit pixels

Today's production techniques cannot guarantee an absolutely fault-free screen display. Depending on the total number of pixels (resolution), there may be a few constantly lit or unlit pixels or subpixels.



1 = Pixel

2 = Subpixel

Pixel	A pixel consists of 3 subpixels, normally red, green and blue. A pixel is the smallest element that can be generated by complete functionality of the display.
Subpixel	A subpixel is a separately addressable internal structure within a pixel that enhances the pixel function.
Pixel fault	All 3 subpixels are lit/unlit. The result is a brighter or darker pixel.
Subpixel fault	Only one subpixel is lit/unlit. The result is a pixel with missing colours.

The maximum permitted number of faulty pixels is stipulated in the international standard ISO 9241-307. The LCD displays from Fujitsu comply to at least Class I. Fujitsu guarantees displays that are free of pixel faults, so that only subpixel faults may occur.

Examples:

A flat-screen monitor with a resolution of 1280 x 1024 has $1280 \times 1024 = 1,310,720$ pixels. Each pixel consists of three subpixels (red, green and blue), making a total of about 3.9 million subpixels. According to ISO 9241-3 (Class II), a maximum of 3 lit and 3 unlit pixels plus 7 lit or 13 unlit subpixels, or a corresponding combination, may be faulty (1 lit subpixel counts as two unlit subpixels).

A flat-screen display with a resolution of 1920 x 1200 has $1920 \times 1200 = 2,304,000$ pixels. Each pixel consists of three subpixels (red, green and blue), making a total of about 6.9 million subpixels. According to ISO 9241-3 (Class I), a maximum of 2 lit and 2 unlit pixels plus 5 lit or 11 unlit subpixels, or a corresponding combination, may be faulty (1 lit subpixel counts as two unlit subpixels). Because Fujitsu supplies displays that are free of pixel faults, only subpixel faults enter into the evaluation.

Troubleshooting

Should an error occur, first check the following points. If the distortion is still not eliminated, the monitor should, if possible, be checked on another computer.

If you cannot solve the problem, please contact our Service Desk.

Having this problem?	Check the following points:
No screen display Power indicator does not light up	<ul style="list-style-type: none"> ▶ Check whether the power cable on the monitor is connected correctly. ▶ Check whether the computer is switched on.
No screen display Power indicator is lit	<ul style="list-style-type: none"> ▶ Check whether the computer is switched on. ▶ Check whether the data cable for the monitor is correctly attached to the monitor port on the computer. ▶ Press any key on the computer keyboard. The computer may be in power saving mode. ▶ Alter the brightness and/or contrast until you get a picture.
Message: No Signal	<ul style="list-style-type: none"> ▶ Check whether the data cable for the monitor is correctly attached to the monitor port on the computer. ▶ Check whether the computer is switched on.
Message: Frequency out of range: ## kHz / ## Hz Please change the display mode to 1920 x 1080 with 60 Hz	The input signal (horizontal frequency and refresh rate) at the displayed input does not correspond to the technical data for the monitor. <ul style="list-style-type: none"> ▶ Adjust the video frequency range using the computer software (see documentation for the computer or display adapter). ▶ Set a different screen resolution using the computer software (see documentation for the computer or display adapter).
Daisy Chain does not work	There may not be enough bandwidth to feed the second monitor. <ul style="list-style-type: none"> ▶ Reduce the display refresh rate and/or the colour depth in the graphics settings of the system.

Having this problem?	Check the following points:
<p>No current through USB port</p>	<ul style="list-style-type: none"> ▶ Ensure that you use the USB-C cable supplied, or an equivalent and certified one. Your device may trigger the overcurrent protection on the monitor. ▶ Disconnect the device, check it for defects then reconnect it. <p>The lateral USB ports only deliver current if a computer is connected to a USB port designated as "Upstream".</p> <ul style="list-style-type: none"> ▶ Connect a computer to a USB port designated as "Upstream" to activate the lateral USB ports. <p>The lateral USB ports do not support USB power delivery.</p> <ul style="list-style-type: none"> ▶ If your device needs high charge levels of up to 65 W, connect it to the USB-C port on the underside of the monitor.
<p>It is not possible to wake up the computer using a mouse or keyboard connected to the monitor and/or to wake up the computer using an On/Off switch on the monitor in All-in-One mode</p>	<p>If your computer loses its connection to mouse / keyboard while in power-saving mode, the mouse and keyboard are then no longer detected. This can occur if a different input signal gets used on the monitor during the intervening period.</p> <ul style="list-style-type: none"> ▶ Use the On/Off switch on the computer to wake up the computer. ▶ Ensure that the input signal does not get changed while the computer is in power-saving mode. ▶ Only connect one computer to the USB port designated as "Upstream". <p>Further information can be found in the chapter "KVM feature", Page 55</p>

Having this problem?	Check the following points:
Network connection keeps being disrupted	<ul style="list-style-type: none">▶ Download and install the latest "Realtek USB Ethernet Controller Driver" from www.fujitsu.com/fts/download. <p>Issues are known to arise in relation to PCIe Active State Power Management (ASPM). Deactivating this feature can remedy the problem, which may increase the system's power consumption.</p> <ul style="list-style-type: none">▶ Open <i>Power Options</i> (e.g. by right-clicking on the battery symbol in the taskbar).▶ Select <i>Change plan settings – Change advanced power settings</i>.▶ In the <i>Power Options</i> window, click on the + symbol next to <i>PCI Express</i> and then on the + symbol next to <i>Link State Power Management</i>.▶ Change the settings for <i>On battery</i> and <i>Plugged in</i> to <i>Off</i>.▶ Click on <i>OK</i>.

Technical specification

P2410 WE/WS/WE CAM



Condensation is not permitted, neither in the rated range of operation nor in the limit range of operation.

Product name		P2410 WE/WS/WE CAM
Model name		P2410W
Dimensions and weight		
Visible diagonals		61.13 cm
Dot pitch		0.27 mm
Image size	Width	518 mm
	Height	324 mm
Maximum resolution		1920 x 1200
Dimensions incl. monitor base	Width	532.20 mm
	Height (min.)	365.73 mm / 382.73 mm
	Depth	212.70 mm
Weight (without packaging)		6.56 kg / 6.56 kg / 6.57 kg
Storable display modes		36
Pixel fault classes according to ISO 9241-307	Class	I
Electrical data		
Video	Digital	Displayport / HDMI / USB-C
Horizontal frequency		30 kHz 82 kHz (Multi-Scan)
Refresh rate		48 Hz 76 Hz
Maximum pixel rate		Display port: 360 MHz HDMI: 270 MHz USB-C: 360 MHz
Power supply		switches automatically 100 V – 240 V, 50/60 Hz
Sound output		2 W left; 2 W right
USB power output		USB-C UFP: 95 W USB-C DFP: 15 W USB-A: 4.5 W
Total power consumption		see Chapter "Power Management", Page 51

Environmental conditions

Environment class 3K2, DIN IEC 721

Rated range of operation	15 °C 35 °C
Humidity	15% 85%
Limit range of operation	5 °C 35 °C
Humidity	15% 85%
Max. operating altitude	3000 m

Operating modes



The position and size of the picture are factory-configured to optimum settings for the operating modes listed here. Depending on the display adapter used, changes may occur to the picture position and picture size. In this case, you can change and save the settings (see Chapter ["Changing the monitor settings", Page 27](#)).

For ergonomic reasons, a screen resolution of 2560 x 1440 pixels is recommended. For technology reasons (Active Matrix), an LCD monitor also provides an absolutely flicker-free screen image at a refresh rate of 60 Hz.

PC modes	Supported resolution (H*V / Fv)	640×480 @60Hz/75Hz	1600x900 @60Hz
		720×400 @70Hz	1680x1050 @60Hz
		800×600 @60Hz/75Hz	1440x900 @60Hz
		1024×768 @60Hz/75Hz	1920x1080 @60Hz
		1280×1024 @60Hz/75Hz	1920x1200@60Hz
		1280×720 @60Hz	

Video modes	Supported resolution (H*V / Fv)	1	480p (31,469 kHz, 59.94Hz)
		2	480p (31.50kHz, 60 Hz)
		3	576p (31.25kHz, 50 Hz)
		4	720p (37.5kHz, 50 Hz)
		5	720p (44.95kHz, 59.94Hz)
		6	720p (45.0kHz, 60 Hz)
		7	1080p (56,250 kHz, 50 Hz)
		8	1080p (67,433 kHz, 59.94Hz)
		9	1080p (67.5kHz, 60 Hz)

P2410 TE/TS CAM



Condensation is not permitted, neither in the rated range of operation nor in the limit range of operation.

Product name

Model name

P2410 TE/TS CAM

P2410T

Dimensions and weight

Visible diagonals		60.5 cm
Dot pitch		0.27 mm
Image size	Width	527 mm
	Height	296 mm
Maximum resolution		1920 x 1080
Dimensions incl. monitor base	Width	539.12 mm
	Height (min.)	336.7 mm / 354.7 mm
	Depth	212.70 mm
Weight (without packaging)		5.99 kg / 6.00 kg
Storable display modes		36
Pixel fault classes according to ISO 9241-307	Class	I

Electrical data

Video	Digital	DisplayPort / HDMI / USB-C
Horizontal frequency		30 kHz 82 kHz (Multi-Scan)
Refresh rate		48 Hz 76 Hz
Maximum pixel rate		Display port: 360 MHz HDMI: 270 MHz USB-C: 360 MHz
Power supply		switches automatically 100 V – 240 V, 50/60 Hz
Sound output		2 W left; 2 W right
USB power output		USB-C UFP: 95 W USB-C DFP: 15 W USB-A: 4.5 W
Total power consumption	see Chapter "Power Management", Page 51	

Ambient conditions

Environment class 3K2, DIN IEC 721

Rated range of operation	15 °C 35 °C
Humidity	15% 85%
Limit range of operation	5 °C 35 °C
Humidity	15% 85%
Max. operating altitude	3000 m

Operating modes



The position and size of the picture are factory-configured to optimum settings for the operating modes listed here. Depending on the display adapter used, changes may occur to the picture position and picture size. In this case, you can change and save the settings (see Chapter ["Changing the monitor settings", Page 27](#)).

For ergonomic reasons, a screen resolution of 2560 x 1440 pixels is recommended. For technology reasons (Active Matrix), an LCD monitor also provides an absolutely flicker-free screen image at a refresh rate of 60 Hz.

PC modes	Supported resolution (H*V / Fv)	640×480 @60Hz/75Hz	1600x900 @60Hz
		720×400 @70Hz	1680x1050 @60Hz
		800×600 @60Hz/75Hz	1440x900 @60Hz
		1024×768 @60Hz/75Hz	1920x1080 @60Hz
		1280×1024 @60Hz/75Hz	1920x1200@60Hz

Video modes	Supported resolution (H*V / Fv)	1	480p (31,469 kHz, 59.94Hz)
		2	480p (31.50kHz, 60 Hz)
		3	576p (31.25kHz, 50 Hz)
		4	720p (37.5kHz, 50 Hz)
		5	720p (44.95kHz, 59.94Hz)
		6	720p (45.0kHz, 60 Hz)
		7	1080p (56,250 kHz, 50 Hz)
		8	1080p (67,433 kHz, 59.94Hz)
		9	1080p (67.5kHz, 60 Hz)

B2410 WE/WS



Condensation is not permitted, neither in the rated range of operation nor in the limit range of operation.

Product name

Model name

B2410 WE/WS

B2410W

Dimensions and weight

Visible diagonals		61.13 cm
Dot pitch		0.27 mm
Image size	Width	518 mm
	Height	324 mm
Maximum resolution		1920 x 1200
Dimensions incl. monitor base	Width	532.20 mm
	Height (min.)	365.73 mm
	Depth	212.70 mm
Weight (without packaging)		6.15 kg
Storable display modes		36
Pixel error classes according to ISO 9241-307	Class	I

Electrical data

Video	Digital	Displayport / HDMI / DVI-D / VGA
Horizontal frequency		30 kHz 82 kHz (Multi-Scan)
Refresh rate		48 Hz 76 Hz
Maximum pixel rate		Display port: 180 MHz
		HDMI: 225 MHz
		DVI-D: 165 MHz
		VGA: 210 MHz
Power supply		switches automatically
		100 V – 240 V, 50/60 Hz
Sound output		2 W left; 2 W right
USB power output		USB-C DFP: 15 W
		USB-A: 4.5 W
Total power consumption		see Chapter "Power Management", Page 51

Ambient conditions

Environment class 3K2, DIN IEC 721

Rated range of operation 15 °C 35 °C

Humidity 15% 85%

Limit range of operation 5 °C 35 °C

Humidity 15% 85%

Max. operating altitude 3000 m

Operating modes



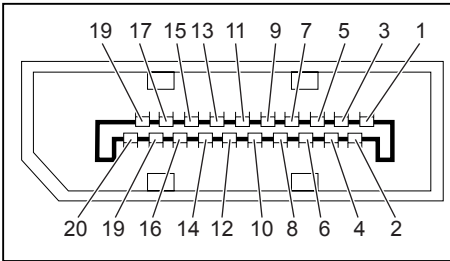
The position and size of the picture are factory-configured to optimum settings for the operating modes listed here. Depending on the display adapter used, changes may occur to the picture position and picture size. In this case, you can change and save the settings (see Chapter ["Changing the monitor settings", Page 27](#)).

For ergonomic reasons, a screen resolution of 2560 x 1440 pixels is recommended. For technology reasons (Active Matrix), an LCD monitor also provides an absolutely flicker-free screen image at a refresh rate of 60 Hz.

PC modes	Supported resolution (H*V / Fv)	640×480 @60Hz/75Hz	1600x900 @60Hz
		720×400 @70Hz	1680x1050 @60Hz
		800×600 @60Hz/75Hz	1440x900 @60Hz
		1024×768 @60Hz/75Hz	1920x1080 @60Hz
		1280×1024 @60Hz/75Hz	1920x1200@60Hz
		1280×720 @60Hz	

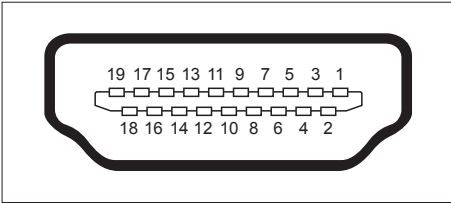
Video modes	Supported resolution (H*V / Fv)	1	480p (31,469 kHz, 59.94Hz)
		2	480p (31.50kHz, 60 Hz)
		3	576p (31.25kHz, 50 Hz)
		4	720p (37.5kHz, 50 Hz)
		5	720p (44.95kHz, 59.94Hz)
		6	720p (45.0kHz, 60 Hz)
		7	1080p (56,250 kHz, 50 Hz)
		8	1080p (67,433 kHz, 59.94Hz)
		9	1080p (67.5kHz, 60 Hz)

Displayport socket



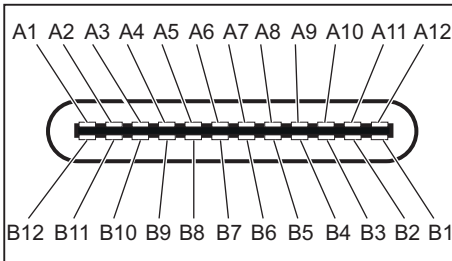
Pin	Meaning
1	Lane 3 (negative)
2	Earth
3	Lane 3 (positive)
4	Lane 2 (negative)
5	Earth
6	Lane 2 (positive)
7	Lane 1 (negative)
8	Earth
9	Lane 1 (positive)
10	Lane 0 (negative)
11	Earth
12	Lane 0 (positive)
13	Connected to earth
14	Connected to earth
15	Auxiliary channel (positive)
16	Earth
17	Auxiliary channel (negative)
18	Hot Plug Detect
19	Return for Power
20	Power for connector (3.3 V 500 mA)

HDMI port



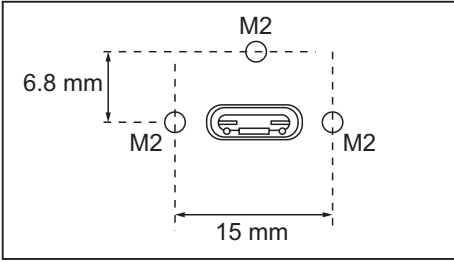
Pin	Meaning
1	TMDS Data2+
2	TMDS Data2 Shield
3	TMDS Data2-
4	TMDS Data1+
5	TMDS Data1 Shield
6	TMDS Data1-
7	TMDS Data0+
8	TMDS Data0 Shield
9	TMDS Data0-
10	TMDS Clock+
11	TMDS Clock Shield
12	TMDS Clock-
13	CEC
14	N.C.
15	SCL
16	SDA
17	DDC/CEC Ground
18	+5 V Power
19	Hot plug detect

USB-C port



Pin	Meaning
A1	Ground return
A2	SuperSpeed differential pair #1, TX, positive
A3	SuperSpeed differential pair #1, TX, negative
A4	Bus power
A5	Configuration channel
A6	Non-SuperSpeed differential pair, position 1, positive
A7	Non-SuperSpeed differential pair, position 1, negative
A8	Sideband use (SBU)
A9	Bus power
A10	SuperSpeed differential pair #4, RX, negative
A11	SuperSpeed differential pair #4, RX, positive
A12	Ground return
B12	Ground return
B11	SuperSpeed differential pair #2, RX, positive
B10	SuperSpeed differential pair #2, RX, negative
B9	Bus power
B8	Sideband use (SBU)
B7	Non-SuperSpeed differential pair, position 2, negative
B6	Non-SuperSpeed differential pair, position 2, positive
B5	Configuration channel
B4	Bus power
B3	SuperSpeed differential pair #3, TX, negative
B2	SuperSpeed differential pair #3, TX, positive
B1	Ground return

USB-C Upstream port



Appendices

TCO:

["https://support.ts.fujitsu.com/IndexDownload.asp?SoftwareGuid=0b1846d6-c0bc-4535-8ad5-1adb49610945"](https://support.ts.fujitsu.com/IndexDownload.asp?SoftwareGuid=0b1846d6-c0bc-4535-8ad5-1adb49610945)

ENERGY STAR®:

["https://support.ts.fujitsu.com/IndexDownload.asp?SoftwareGuid=d64ffa5e-9f01-475a-9269-975391774341"](https://support.ts.fujitsu.com/IndexDownload.asp?SoftwareGuid=d64ffa5e-9f01-475a-9269-975391774341)

BSMI RoHS:

["https://support.ts.fujitsu.com/IndexDownload.asp?SoftwareGuid=2318189a-c6bc-4691-a45d-2c37884197b6"](https://support.ts.fujitsu.com/IndexDownload.asp?SoftwareGuid=2318189a-c6bc-4691-a45d-2c37884197b6)

China RoHS:

["https://support.ts.fujitsu.com/IndexDownload.asp?SoftwareGuid=e8358fb7-83a3-45ca-b707-c36a868bf0ca"](https://support.ts.fujitsu.com/IndexDownload.asp?SoftwareGuid=e8358fb7-83a3-45ca-b707-c36a868bf0ca)