

1. Disassembly Procedures

S1 Turn off the monitor.

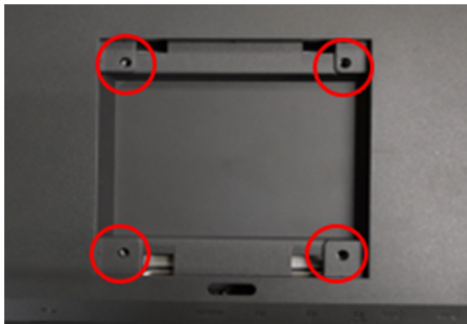
S2 Place the monitor on a soft cloth or cushion.

Press and hold the stand release button.

Lift the stand up and away from the monitor.

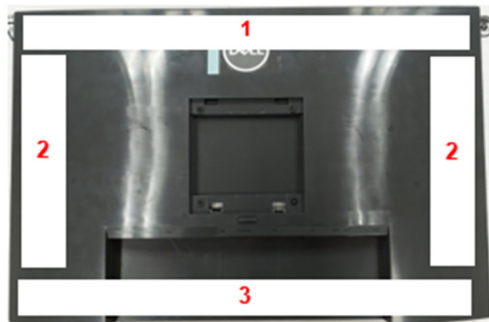


S3 Unlock 4 screws on Rear Cover

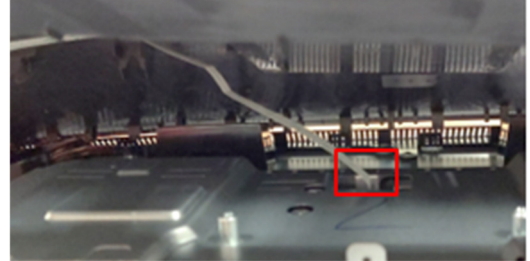


(Screw Torque: 9±1kgf)

S4 Disassemble Rear Cover from Middle Frame according to the sequence shown in the picture

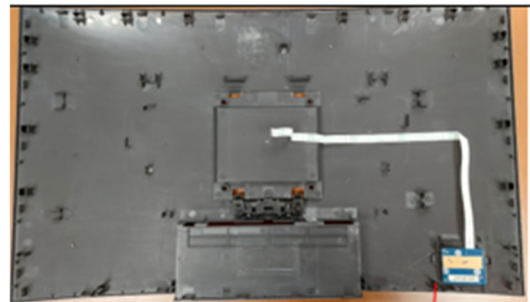


S5 Pull out CTRL BD FFC from I/F BD to take off Rear Cover



S6 Unlock 3 screws to disassemble CTRL BD from Rear Cover

Tear off CTRL BD FFC from Rear Cover and take off CTRL BD from Rear Cover

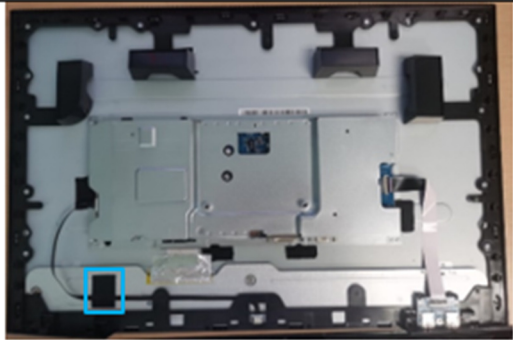


(Screw Torque: 2±0.5kgf)

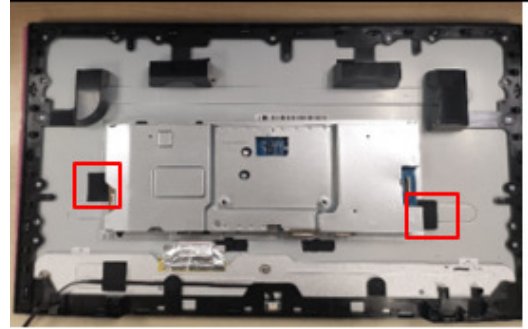
S7 Disassemble CTRL BD FFC from CTRL BD



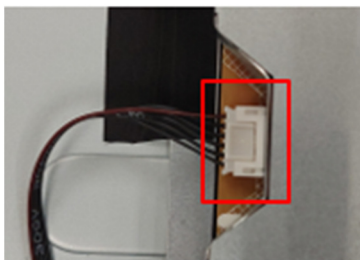
- S8** Tear off a tape from Backlight Wire



- S11** Tear of 2 tapes from Main SHD



- S9** Pull out Backlight wire from SPS BD



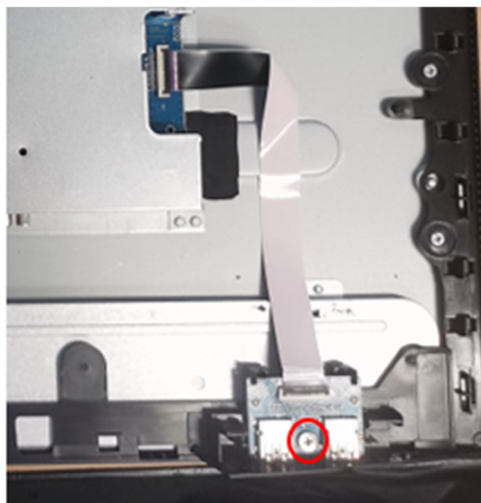
- S12** Tear off a aluminum foil from LVDS cable



- S10** Disassemble USB FFC from USB BD and I/F BD

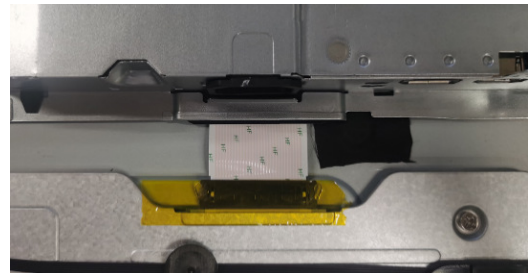
Unlock 1 screw on USB BD

Disassemble USB BD from Middle Frame



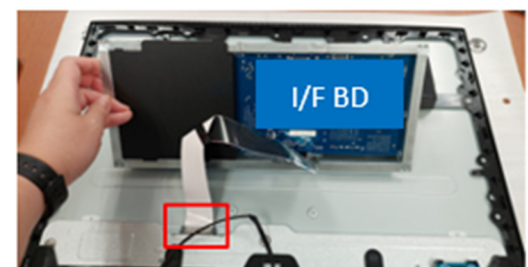
(Screw Torque: 4.5 ± 0.5 kgf)

- S13** Tear off a yellow tape from LVDS cable



- S14** Disassemble LVDS cable from Panel

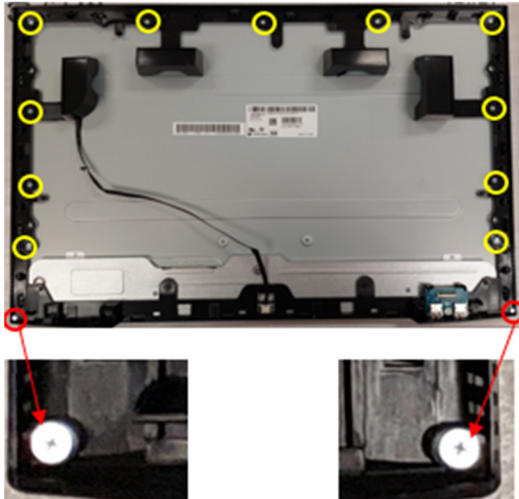
Take off Main SHD from Panel



S15 Unlock 2 screws on "ASSY CHIN"
(See Red mark)

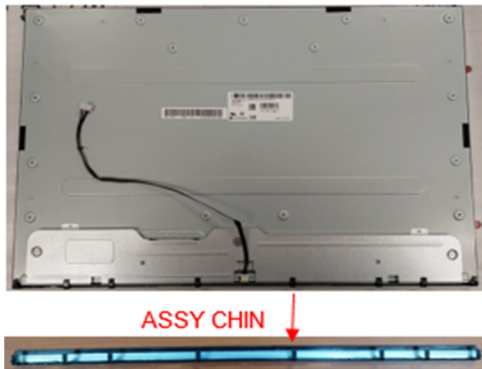
Unlock 11 screws on Middle Frame
(See Yellow mark)

Disassemble Middle Frame from Panel
and "ASSY CHIN"



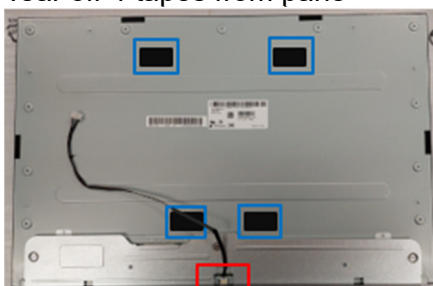
(Screw Torque_MF screw: $4.5 \pm 0.5 \text{kgf}$)
(Screw Torque_"ASSY CHIN" screw: $2.0 \pm 0.1 \text{kgf}$)

S16 Disassemble "ASSY CHIN" from Panel



S17 Pull out Backlight Wire from panel

Tear off 4 tapes from pane



S18 Disassemble Mylar from Main SHD

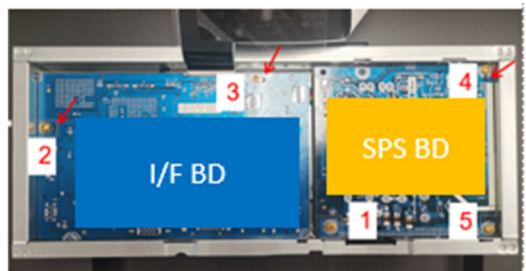


S19 Unlock 4 hexagonal screws



(Screw Torque: $5.0 \pm 0.6 \text{kgf}$)

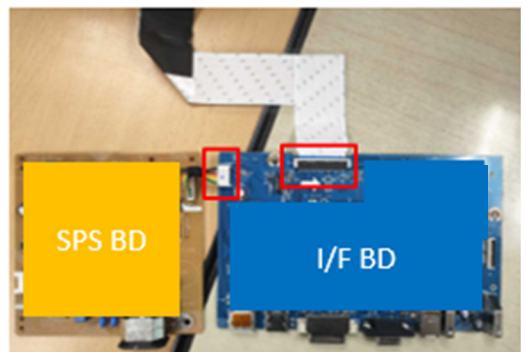
S20 Unlock 5 PCBA screws



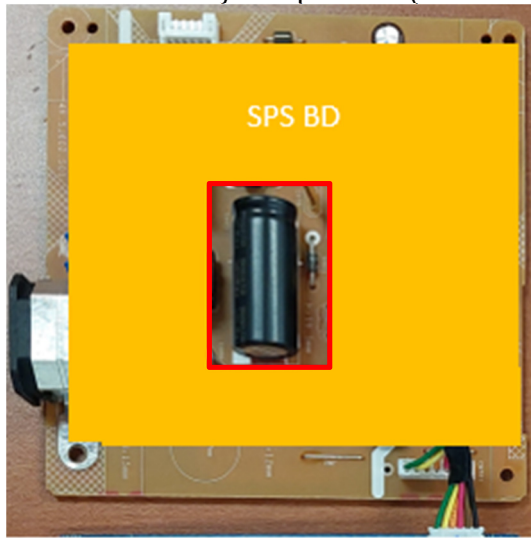
(Screw Torque: $5.0 \pm 0.6 \text{kgf}$)

S21 Disassemble I/F BD and SPS BD from
Main SHD

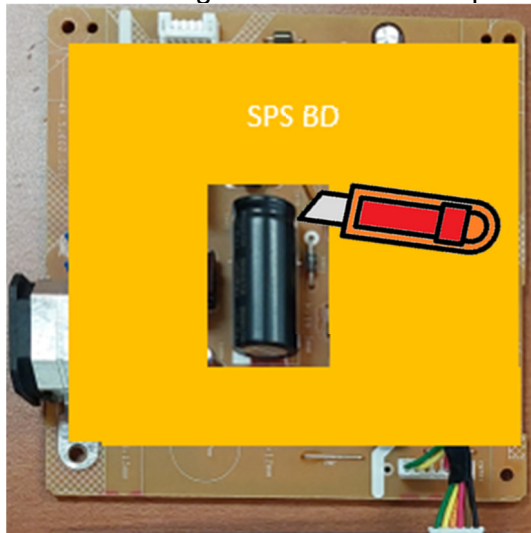
Pull out all wires on PCBA



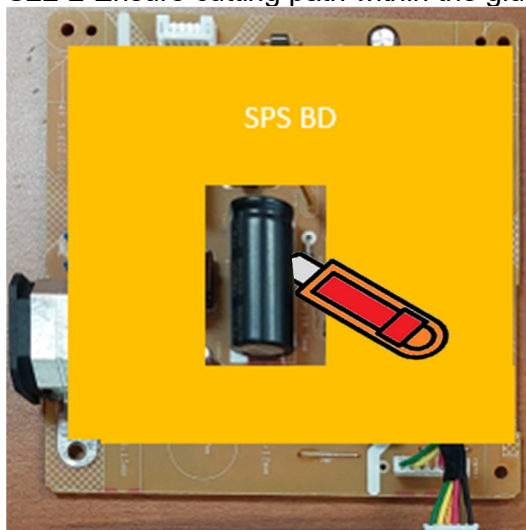
S22 Remove electrolyte capacitors (red mark) from printed circuit boards



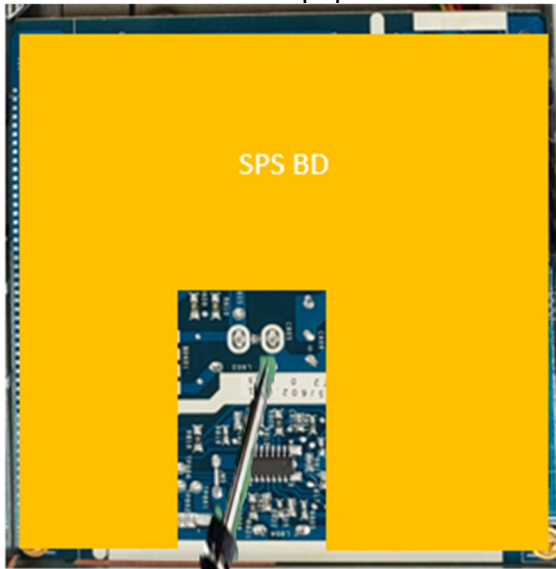
S22-1 Cut the glue between bulk cap. and PCB with a knife



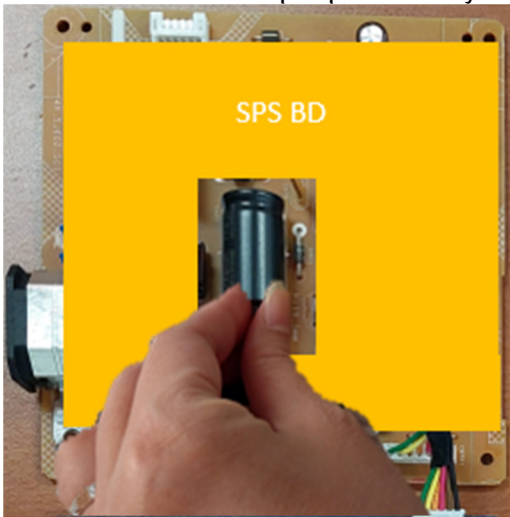
S22-2 Ensure cutting path within the glue, don't touch bulk cap. or PCB



S22-3 Take out bulk cap. pin solder with soldering iron and absorber



S22-4 Lift the bulk cap. up and away from the PCB



2. Product material information

The following substances, preparations, or components should be disposed of or recovered separately from other WEEE in compliance with Article 4 of EU Council Directive 75/442/EEC.

Capacitors / condensers (containing PCB/PCT)	No used
Mercury containing components	No used
Batteries	No used
Printed circuit boards (with a surface greater than 10 square cm)	Product has printed circuit boards (with a surface greater than 10 square cm)
Component contain toner, ink and liquids	No used
Plastic containing BFR	No used
Component and waste contain asbestos	No used
CRT	No used
Component contain CFC, HCFC, HFC and HC	No used
Gas discharge lamps	No used
LCD display > 100 cm ²	Product has an LCD greater than 100 cm ²
External electric cable	Product has external cables
Component contain refractory ceramic fibers	No used
Component contain radio-active substances	No used
Electrolyte capacitors (height > 25mm, diameter > 25mm)	Product has electrolyte capacitors (height >25mm, diameter > 25mm)

3. Tools Required

List the type and size of the tools that would typically can be used to disassemble the product to a point where components and materials requiring selective treatment can be removed.

Tool Description:

- Screwdriver
- Scraper Bar
- Penknife
- Soldering iron and absorber