

PHILIPS

Business
Monitor

3000 Series



13B1K3300

EN

User manual

Customer care and warranty

Troubleshooting and FAQs

1

18

19

Register your product and get support at www.philips.com/welcome

Table of Contents

1. Important	1
1.1 Safety precautions and maintenance	1
1.2 Notational Descriptions	3
1.3 Disposal of product and packing material	4
2. Setting up the monitor	5
2.1 Installation	5
2.2 Operating the monitor	8
2.3 Remove the Base Assembly for VESA Mounting	11
3. SmartRemote	12
4. Technical Specifications	14
5. Power Management	17
6. Customer care and warranty ..	18
7. Troubleshooting & FAQs	19
7.1 Troubleshooting	19
7.2 General FAQs	20

1. Important

This electronic user's guide is intended for anyone who uses the Philips monitor. Take time to read this user manual before you use your monitor. It contains important information and notes regarding operating your monitor.

The Philips guarantee applies provided the product is handled properly for its intended use, in accordance with its operating instructions and upon presentation of the original invoice or cash receipt, indicating the date of purchase, dealer's name and model and production number of the product.

1.1 Safety precautions and maintenance

Warnings

Use of controls, adjustments or procedures other than those specified in this documentation may result in exposure to shock, electrical hazards and/or mechanical hazards.

Read and follow these instructions when connecting and using your computer monitor.

Excessive sound pressure from earphones and headphones can cause hearing loss. Adjustment of the equalizer to maximum increases the earphones and headphones output voltage and therefore the sound pressure level.

Operation


- Please keep the monitor away from strong direct sunlight, as well as any other heat sources. Long exposure to this type of environment may result in discoloration and damage to the monitor.
- Keep the display away from oil. Oil may damage the plastic cover of the display and void the warranty.
- Remove any object that could fall into ventilation holes or prevent proper cooling of the monitor's electronics.
- Do not block the ventilation holes on the cabinet.
- When positioning the monitor, make sure the power plug and outlet are easily accessible.
- When turning off the monitor by detaching the power cable or DC power cord, wait 6 seconds before re-attaching the power cable or DC power cord for normal operation.
- Please use approved power cord provided by Philips all the time. If your power cord is missing, please contact your local service center. (Please refer to Service contact information listed in Important information manual.)
- Operate under the specified power supply. Be sure to operate the monitor only with the specified power supply. Use of an incorrect voltage will cause malfunction and may cause fire or electric shock.
- Protect the cable. Do not pull or bend the power cable and signal cable. Do not place the monitor or any other heavy objects on the cables. If damaged, the cables may cause fire or electric shock.
- Do not subject the monitor to severe vibration or high impact conditions during operation.
- To avoid potential damage, for example, the panel peeling from the bezel, ensure that the monitor does not tilt downward by more than -5 degrees. If the -5 degree downward tilt angle maximum is exceeded, the monitor damage will not be covered under warranty.

- Do not knock or drop the monitor during operation or transportation.
- The USB Type-C port could only be connected to specify equipment with fire enclosure in compliance with IEC 62368-1 or IEC 60950-1.
- Excessive usage of monitor can cause eye discomfort, it's better to take shorter breaks more often at your workstation than longer breaks and less often; for example a 5-10 minute break after 50-60-minute continuous screen use is likely to be better than a 15-minute break every two hours. Try to keep your eyes from eye strain while using the screen for a constant period of time by :
 - Looking at something varying distances after a long period focusing on the screen.
 - Making a conscious effort to blink often while you work.
 - Gently closing and rolling your eyes to relax.
 - Repositioning your screen to appropriate height and angle according to your height.
 - Adjusting the brightness and contrast to appropriate level.
 - Adjusting the environment lighting similar to that of your screen brightness, avoid the fluorescent lighting, and surfaces that don't reflect too much light.
 - Seeing a doctor if your symp-toms.
- Oil-based cleaning solutions may damage the plastic parts and void the warranty.
- Unplug the monitor if you are not going to use it for an extensive period of time.
- Unplug the monitor if you need to clean it with a slightly damp cloth. The screen may be wiped with a dry cloth when the power is off. However, never use organic solvent, such as, alcohol, or ammonia-based liquids to clean your monitor.
- To avoid the risk of shock or permanent damage to the set, do not expose the monitor to dust, rain, water, or excessive moisture environment.
- If your monitor gets wet, wipe it with dry cloth as soon as possible.
- If foreign substance or water gets in your monitor, please turn the power off immediately and disconnect the power cord. Then, remove the foreign substance or water, and send it to the maintenance center.
- Do not store or use the monitor in locations exposed to heat, direct sunlight or extreme cold.
- In order to maintain the best performance of your monitor and use it for a longer lifetime, please use the monitor in a location that falls within the following temperature and humidity ranges.
 - Temperature: 0-40°C 32-104°F
 - Humidity: 20-80% RH

Maintenance

- To protect your monitor from possible damage, do not put excessive pressure on the EPD (Electronic Paper Display). When moving your monitor, grasp the frame to lift; do not lift the monitor by placing your hand or fingers on the EPD.

Important information for Burn-in/Ghost image

- If there is ghosting of the on-screen image, then use the  Clear Image Sticking button on the display to refresh the screen.

Service

- The casing cover should be opened only by qualified service personnel.
- If there is any need for any document for repair or integration, please contact with your local service center. (Please refer to Service contact information listed in Important information manual.)
- For transportation information, please refer to “Technical Specifications”.
- Do not leave your monitor in a car/trunk under direct sun light.

Note

Consult a service technician if the monitor does not operate normally, or you are not sure what procedure to take when the operating instructions given in this manual have been followed.

1.2 Notational Descriptions

The following subsections describe notational conventions used in this document.

Notes, Cautions and Warnings

Throughout this guide, blocks of text may be accompanied by an icon and printed in bold or italic type. These blocks contain notes, cautions or warnings. They are used as follows:

Note

This icon indicates important information and tips that help you make better use of your computer system.

Caution

This icon indicates information that tells you how to avoid either potential damage to hardware or loss of data.

Warning

This icon indicates the potential for bodily harm and tells you how to avoid the problem.

Some warnings may appear in alternate formats and may not be accompanied by an icon. In such cases, the specific presentation of the warning is mandated by the relevant regulatory authority.

1.3 Disposal of product and packing material

Waste Electrical and Electronic Equipment-WEEE



This marking on the product or on its packaging illustrates that, under European Directive 2012/19/EU governing used electrical and electronic appliances, this product may not be disposed of with normal household waste. You are responsible for disposal of this equipment through a designated waste electrical and electronic equipment collection. To determine the locations for dropping off such waste electrical and electronic, contact your local government office, the waste disposal organization that serves your household or the store at which you purchased the product.

Your new monitor contains materials that can be recycled and reused. Specialized companies can recycle your product to increase the amount of reusable materials and to minimize the amount to be disposed of.

All redundant packing material has been omitted. We have done our utmost to make the packaging easily separable into mono materials.

Please find out about the local regulations on how to dispose of your old monitor and packing from your sales representative.

Taking back/Recycling Information for Customers

Philips establishes technically and economically viable objectives to optimize the environmental performance of the organization's product, service and activities.

From the planning, design and production stages, Philips emphasizes the important of making products that can easily be recycled. At Philips, end-of-life management primarily entails participation in national take-back initiatives and recycling programs whenever possible, preferably in cooperation with competitors, which recycle all materials (products and related packaging material) in accordance with all Environmental Laws and taking back program with the contractor company.

Your display is manufactured with high quality materials and components which can be recycled and reused.

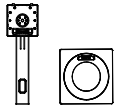
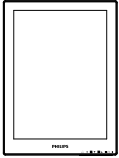
To learn more about our recycling program please visit

<http://www.philips.com/a-w/about/sustainability.html>

2. Setting up the monitor

2.1 Installation

1 Package contents



*HDMI



*DP



*USB C-C

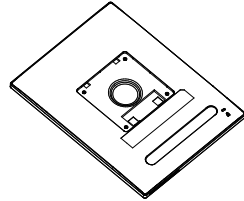
*Different according to region

Note

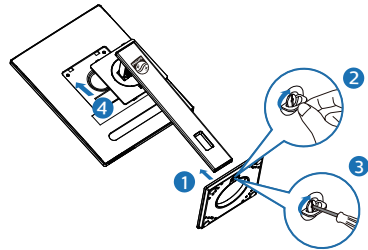
Use only AC/DC adapter model: Philips ADPC1936.

2 Install the base

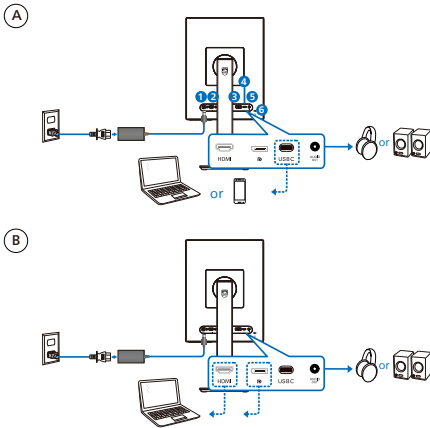
1. Place the monitor face down on a smooth surface. Pay attention not to scratch or damage the screen.



2. Hold the stand with both hands.
 - (1) Gently attach the base to the stand.
 - (2) Use your fingers to tighten the screw located at the bottom of the base.
 - (3) Use a screwdriver to tighten the screw located at the bottom of the base, and secure the base to the stand tightly.
 - (4) Gently attach the stand to the VESA mount area until the latch locks the stand.



3 Connecting to your PC



- ❶ AC/DC power input
- ❷ HDMI input
- ❸ DisplayPort input
- ❹ USB C
- ❺ Audio out
- ❻ Kensington anti-theft lock

ⓘ Note

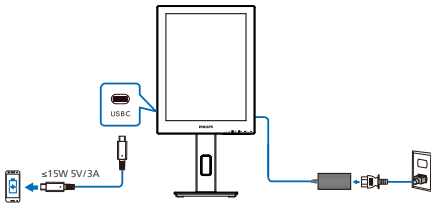
The monitor is able to receive power and video signal through the USB-C port. The HDMI and DP port serves as only a video signal input for monitor, it cannot charge a device. The monitor receives power from the power adapter, if it is connected.

Connect to PC

1. Connect the power cord to the back of the monitor firmly.
2. Turn off your computer and unplug its power cable.
3. Connect the monitor signal cable to the video connector on the back of your computer.
4. Plug the power cord of your computer and your monitor into a nearby outlet.
5. Turn on your computer and monitor. If the monitor displays an image, installation is complete.

4 Power Delivery

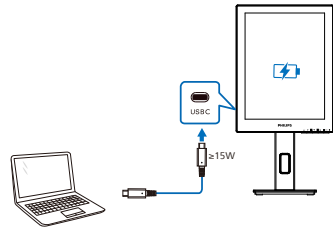
With power adapter connected to the monitor:



This monitor's USB-C port is able to supply 15W and 5V/3A of power for charging your device.

There is various devices in the market that may differ from design or setting on specification. As your device may have different power requirements than the monitor's USB-C port is able to deliver, we are unable to ensure our monitor's USB-C with 15W (5V/3A) can comply the power delivery to your device. See your device manufacturer's technical specifications for recommendations to prevent damage to your device.

Without power adapter connected to the monitor:



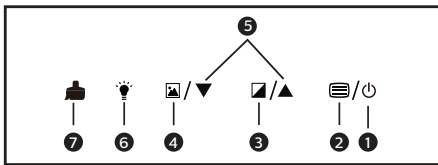
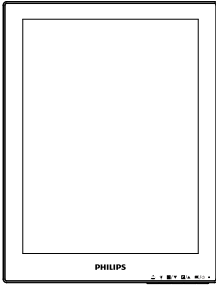
The monitor is able to be powered by device through USB-C which support up to 65W with 5V/3A, 7V/3A, 9V/3A, 10V/3A, 12V/3A, 15V/3A, 20V/3.25A.

ⓘ Note

It is highly recommended to connect to the power adapter when using a mobile phone with the monitor for better use. Please note, the screen may flicker or go black when the battery on your device is low. Connect power to resolve this situation.

2.2 Operating the monitor

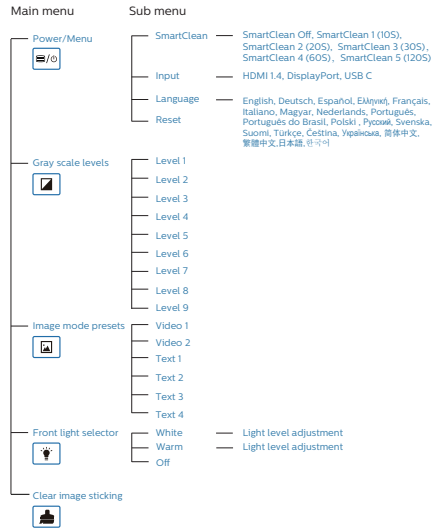
1 Description of the control buttons

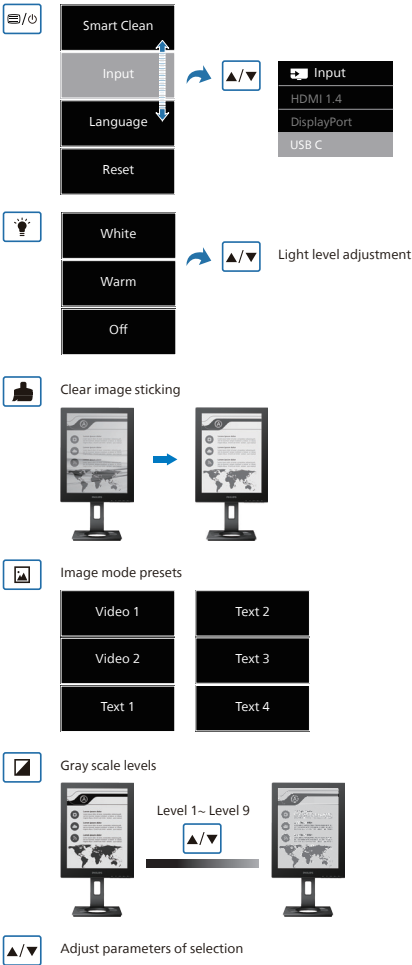


1		Hold for 3 seconds to power ON and OFF.
2		Access the OSD menu. Switch items based your requirements.
3		Gray scale levels: There are nine levels with selections for contrast and gray scale levels.
4		Image mode Presets: There are six preset modes. Video 1 and 2: Optimize for viewing video. Text 1, 2, 3, and 4: Optimize for reading text documents.
5		Adjust parameters of selection.
6		Front light selector: White light, Warm light and Off.
7		Clear image sticking: Refresh the screen to clear image ghosting.

2 The OSD Menu

Below is an overall view of the structure of the On-Screen Display. You can use this as a reference when you want to work your way around the different adjustments later on.





3 Resolution notification

This monitor is designed for optimal performance at its native resolution, 1200 x 1600. When the monitor is powered on at a different resolution, an alert is displayed on screen: Use 1200 x 1600 for best results.

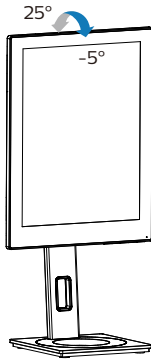
Display of the native resolution alert can be switched off from Setup in the OSD (On Screen Display) menu.

Note

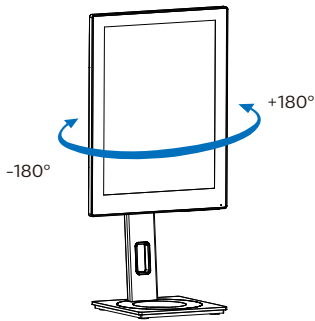
- The EPD monitor is optimized for reading text. It is a bi-stable reflective display, which has a lower refresh rate compared to the LCD monitor. It is highly recommended to use the SmartRemote app that provides a quicker and easier way for you to view your files on the EPD display.

4 Physical Function

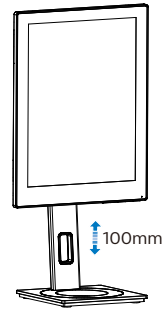
Tilt



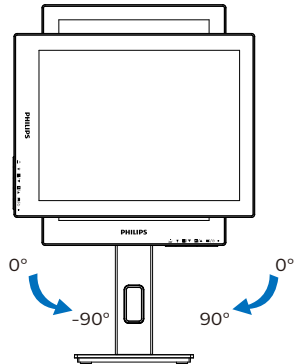
Swivel



Height adjustment



Pivot



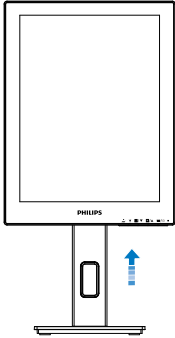
⚠ Warning

- To avoid potential screen damage, such as panel peeling, ensure that the monitor does not tilt downward by more than -5 degrees.
- Do not press the screen while adjusting the angle of the monitor. Grasp only the bezel.

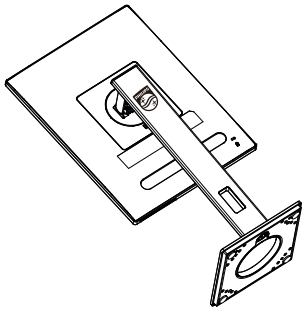
2.3 Remove the Base Assembly for VESA Mounting

Before you start disassembling the monitor base, please follow the instructions below to avoid any possible damage or injury.

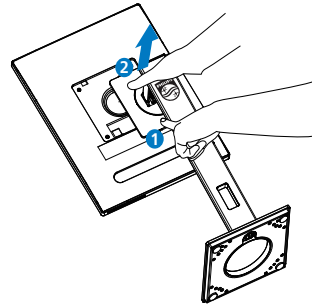
1. Extend the monitor base to its maximum height.



2. Place the monitor face down on a smooth surface. Pay attention not to scratch or damage the screen. Then lift the monitor stand.

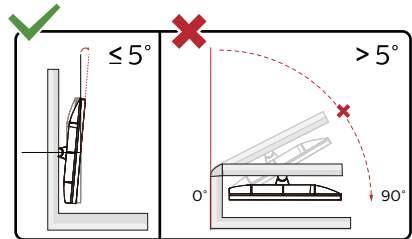
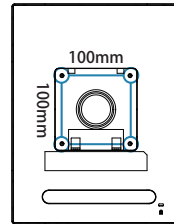


3. While keeping the release button pressed, tilt the base and slide it out.



Note

This monitor accepts a 100mm x 100mm VESA-Compliant mounting interface. VESA Mounting Screw M4. Always contact manufacturer for wall-mount installation.



* Display design may differ from those illustrated.



Warning

- To avoid potential screen damage, such as panel peeling, ensure that the monitor does not tilt downward by more than -5 degrees.
- Do not press the screen while adjusting the angle of the monitor. Grasp only the bezel.

3. SmartRemote

1 What is SmartRemote?

SmartRemote is the exclusive, leading-edge Philips software for Philips series electronic paper display (EPD) that allows you to display different types of content.

2 Why do I need it?

SmartRemote simplifies the way you view your files. You can click the SmartRemote function button to easily move up/down, zoom in/out, search text, or switch to other files between your laptop and EPD. Together with the on-screen display (OSD) modes on the monitor which provides presets optimized to display all your favorite kinds of content.

3 How to enable SmartRemote?

Follow the instructions below to complete the installation and launch the SmartRemote app.

Installation

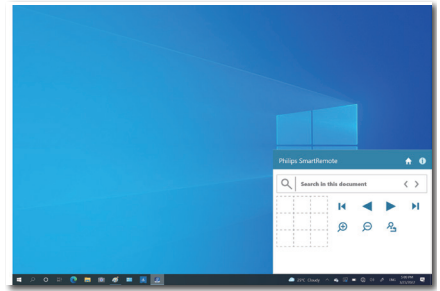
Go to Philips support site at: www.philips.com/welcome and download the SmartRemote app. SmartRemote can only be used with Philips electronic paper display (EPD) series displays. Follow the instructions and complete the installation.



SmartRemote

Start with SmartRemote

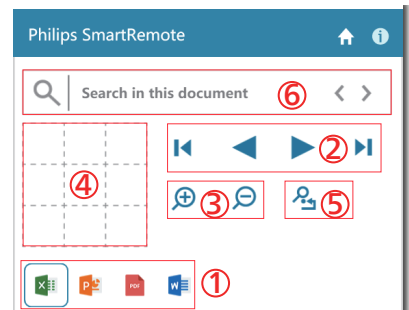
Click the app from your desktop or folder of SmartRemote. The user interface will appear in the bottom right corner of your screen.




Interface

1. Drag and drop files to the file drop zone. See the list of files you have added. Supported file formats include Microsoft Word, Excel, PowerPoint, or PDF.
2. Page through your files or jump to the beginning or end of the list of files.
3. Zoom in or out of your files.
4. The Zoom function will divide the document into quadrants. You may use the mouse to move between quadrants.
5. Show file at 100% original size.
6. Search for text in files.

For example, click on the + (zoom in) (3) and then click in the quadrant viewer (4) to zoom into the area of the screen you wish to see. Clicking in the top left quadrant will zoom into the top left corner of your document. Clicking on the lower left will zoom to the lower left of the document.



The file contents will be shown on the EPD. You can read and switch between the files using this easy view interface. Please note, five files are the maximum that can be loaded in this interface. If you drag additional file into the interface, the oldest file will be removed from the file viewer interface.

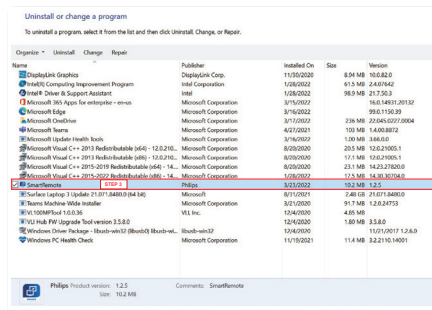
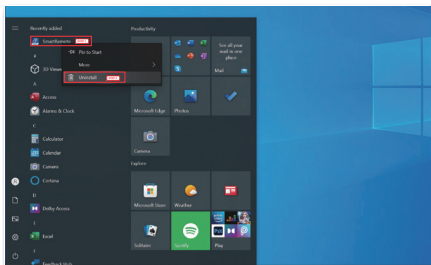
If there is ghosting of the on-screen image, then use the  Clear Image Sticking button on the display to refresh the screen.

You may click the right button of the mouse on the app from the taskbar while not using the EPD.

Uninstallation

Follow the instructions below to uninstall SmartRemote.






1. Click the Start button, and select SmartRemote from the Start menu.
2. Right-click on SmartRemote, and select the Uninstall button.
3. Complete the uninstallation of SmartRemote.



Note

- The SmartRemote app is used for viewing the files quickly and easily but is unable to edit while using the app.
- The SmartRemote app is compatible with Windows operating systems only, macOS is not supported at this time.

4. Technical Specifications

Picture/Display			
Monitor Panel Type	EPD		
Panel Size	13.3" (33.8 cm)		
Aspect Ratio	3:4		
Pixel Pitch	0.169 (H) mm x 0.169 (V) mm		
Resolution	1200 x 1600		
Display Screen Coating	Anti-Glare 3H, Haze 15%		
Display Colors	4 bits grey scale		
Connectivity			
Connectors	1x HDMI 1.4 (HDCP 1.4) 1x DisplayPort 1.2 (HDCP 1.4) 1x USB-C (HDCP 1.4) 1x Audio out		
Signal Input source	HDMI, DisplayPort, USB-C		
Sync input	Separate Sync		
USB			
USB Port	USB-C: DisplayPort Alt mode		
Power Delivery	USB-C (output): PD version 3.0, up to 15W (5V/3A) USB-C (input): PD version 3.0, up to 65W (5V/3A, 7V/3A, 9V/3A, 10V/3A, 12V/3A, 15V/3A, 20V/3.25A)		
Convenience			
User Convenience	    		
OSD Languages	English, German, Spanish, Greek, French, Italian, Hungarian, Dutch, Portuguese, Brazil Portuguese, Polish, Russian, Swedish, Finnish, Turkish, Czech, Ukrainian, Simplified Chinese, Traditional Chinese, Japanese, Korean		
Other Convenience	VESA mount (100 x 100 mm), Kensington Lock, Front Light (White/Warm)		
Plug & Play Compatibility	DDC/CI, sRGB, Windows 11/10/8.1/8, Mac OS X		
Stand			
Tilt	-5 / +25 degree		
Swivel	-180 / +180 degree		
Height adjustment	100 mm		
Pivot	-90 / +90 degree		
Power			
Consumption	AC Input Voltage at 100VAC , 50Hz	AC Input Voltage at 115VAC , 50Hz	AC Input Voltage at 230VAC, 50Hz
Normal Operation	6.5 W (typ.)	6.5 W (typ.)	6.7 W (typ.)
Sleep (Standby mode)	0.4 W (typ.)	0.4 W (typ.)	0.4 W (typ.)

Off mode	0.3 W (typ.)	0.3 W (typ.)	0.3 W (typ.)
Heat Dissipation*	AC Input Voltage at 100VAC , 50Hz	AC Input Voltage at 115VAC , 50Hz	AC Input Voltage at 230VAC , 50Hz
Normal Operation	22.18 BTU/hr (typ.)	22.18 BTU/hr (typ.)	22.87 BTU/hr (typ.)
Sleep (Standby mode)	1.37 BTU/hr (typ.)	1.37 BTU/hr (typ.)	1.37 BTU/hr (typ.)
Off mode	1.02 BTU/hr (typ.)	1.02 BTU/hr (typ.)	1.02 BTU/hr (typ.)
Power LED indicator	On mode: White, Standby/Sleep mode: White (blinking)		
Power Supply	External, 100-240V AC, 50/60Hz		

Dimensions

Product with stand (WxHxD)	247 x 482 x 172 mm
Product without stand (WxHxD)	247 x 324 x 23 mm
Product with packaging (WxHxD)	390 x 420 x 159 mm

Weight

Product with stand	1.85 kg
Product without stand	1.06 kg
Product with packaging	3.96 kg

Operating Condition

Temperature range (operation)	0°C to 40°C
Relative humidity (operation)	20% to 80%
Atmospheric pressure (operation)	700 to 1060hPa
Temperature range (Non-operation)	-20°C to 60°C
Relative humidity (Non-operation)	10% to 90%
Atmospheric pressure (Non-operation)	500 to 1060hPa

Environmental and energy

ROHS	YES
Packaging	100% recyclable
Specific Substances	100% PVC BFR free housing

Cabinet

Color	Black
Finish	Texture

Note

- This data is subject to change without notice. Go to www.philips.com/support to download the latest version of leaflet.
- Please notice that your display works best at native resolution of 1200 x 1600. For best display quality, please follow this resolution recommendation.
- The electronic paper display (EPD) is a reflective display. This uses far less power for displaying content, depending on room light to show the content. The last content displayed will continue to be visible even after power is removed.

5. Power Management

If you have VESA DPM compliance display card or software installed in your PC, the monitor can automatically reduce its power consumption when not in use. If an input from a keyboard, mouse or other input device is detected, the monitor will 'wake up' automatically. The following table shows the power consumption and signaling of this automatic power saving feature:

Power Management Definition					
VESA Mode	Video	H-sync	V-sync	Power Used	LED Color
Active	ON	Yes	Yes	6.5 W (typ.)	White
Sleep (Standby mode)	OFF	No	No	0.4 W (typ.)	White (blink)
Off mode	OFF	-	-	0.3 W (typ.)	OFF

The following setup is used to measure power consumption on this monitor.

- Native resolution: 1200 x 1600

Note

This data is subject to change without notice.

6. Customer care and warranty

For warranty coverage information and additional support requirements valid for your region, please visit www.philips.com/support website for details or contact your local Philips Customer Care Center.

For Warranty Period please refer to Warranty Statement in Important Information Manual.

For extended warranty, if you would like to extend your general warranty period, an Out of Warranty service package is offered via our Certified Service Center.

If you wish to make use of this service, please be sure to purchase the service within 30 calendar days of your original purchase date. During the extended warranty period, the service includes pickup, repair and return service, however the user will be responsible for all costs accrued.

If the Certified Service Partner cannot perform the required repairs under the offered extended warranty package, we will find alternative solutions for you, if possible, up to the extended warranty period you have purchased.

Please contact our Philips Customer Service Representative or local contact center (by Consumer care number) for more details.

• Local Standard Warranty Period	• Extended Warranty Period	• Total Warranty Period
• Depend on different Regions	• + 1 Year	• Local Standard warranty period +1
	• + 2 Years	• Local Standard warranty period +2
	• + 3 Years	• Local Standard warranty period +3

**Proof of original purchase and extended warranty purchase required.

Note

Please refer to important information manual for regional service hotline, which is available on the Philips website support page.

7. Troubleshooting & FAQs

7.1 Troubleshooting

This page deals with problems that can be corrected by a user. If the problem still persists after you have tried these solutions, contact Philips customer service representative.

1 Common Problems

No Picture (Power LED not lit)

- Make sure the power cord is plugged into the power outlet and into the back of the monitor.
- First, ensure that the power button on the front of the monitor is in the OFF position, then press it to the ON position.

No Picture (Power LED is White)

- Make sure the computer is turned on.
- Make sure the signal cable is properly connected to your computer.
- Make sure the monitor cable has no bent pins on the connect side. If yes, repair or replace the cable.
- The Energy Saving feature may be activated

Screen says



Check cable connection

- Make sure the monitor cable is properly connected to your computer. (Also refer to the Quick Start Guide).
- Check to see if the monitor cable has bent pins.
- Make sure the computer is turned on.

Note

The Auto Function is not applicable in DVI-

Digital mode as it is not necessary.

Visible signs of smoke or sparks



- Do not perform any troubleshooting steps
- Disconnect the monitor from mains power source immediately for safety
- Contact Philips customer service representative immediately.

2 Imaging Problems

An “after-image” after the power has been turned off.

- The electronic paper display (EPD) is a reflective display. This uses far less power for displaying content, depending on room light to show the content. The last content displayed will continue to be visible even after power is removed.

Image appears distorted. Text is fuzzy or blurred.

- Set the PC’s display resolution to the same mode as monitor’s recommended screen native resolution.
- Click  Image mode presets button on the display for your viewing preference.
- Select  Gray scale levels button on the display. There are nine levels with selections for contrast and gray scale levels.

For further assistance, refer to the Service contact information listed in Important information manual and contact Philips customer service representative.

* Functionality different according to display.

7.2 General FAQs

Q1: When I install my monitor, what should I do if the screen shows 'Cannot display this video mode'?

Ans.: Recommended resolution for this monitor: 1200 x 1600.

- Unplug all cables, then connect your PC to the monitor that you used previously.
- In the Windows Start Menu, select Settings/Control Panel. In the Control Panel Window, select the Display icon. Inside the Display Control Panel, select the 'Settings' tab. Under the setting tab, in box labelled 'desktop area', move the sidebar to 1200 x 1600 pixels.
- Restart your computer and repeat step 2 and 3 to verify that your PC is set at 1200 x 1600.
- Shut down your computer, disconnect your old monitor and reconnect your Philips EPD monitor.
- Turn on your monitor and then turn on your PC.

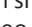


Q2: What are the .inf and .icm files? How do I install the drivers (.inf and .icm)?

Ans.: These are the driver files for your monitor. Your computer may ask you for monitor drivers (.inf and .icm files) when you first install your monitor. Follow the instructions in your user manual, monitor drivers (.inf and .icm files) will be installed automatically.

Q3: How do I adjust the resolution?

Ans.: Your video card/graphic driver and monitor together determine the available resolutions. You can select the desired resolution under Windows® Control Panel with the "Display properties".

Q4: What if I get lost when I am making monitor adjustments via OSD?

Ans.: Press  button on the front bezel to enter OSD Menu screen and then press  or  to select [Reset] to recall all the original factory settings.

Q5: Is the EPD screen resistant to scratches?

Ans.: In general, it is recommended that the panel surface is not subjected to excessive shocks and is protected from sharp or blunt objects. When handling the monitor, make sure that there is no pressure or force applied to the panel surface side. This may affect your warranty conditions.

Q6: How should I clean the EPD surface?

Ans.: For normal cleaning, use a clean, soft cloth. For extensive cleaning, please use isopropyl alcohol. Do not use other solvents such as ethyl alcohol, ethanol, acetone, hexane, etc.


Q7: Can I connect my monitor to any PC, workstation or Mac?

Ans.: Yes. All Philips monitors are fully compatible with standard PCs, Macs and workstations. You may need a cable adapter to connect the monitor to your Mac system. Please contact your Philips sales representative for more information.

Q8: Are Philips EPD monitors Plug-and-Play?

Ans.: Yes, the monitors are Plug-and-Play compatible with Windows 11/10/8.1/8, Mac OSX.

Q9: What is Image Sticking, or Image Burn-in, or After Image, or Ghost Image in EPD panels?

Ans.: If there is ghosting of the on-screen image, then use the  Clear Image Sticking button on the display to refresh the screen.

Q10: Why is my Display not showing sharp text, but with jagged characters?

Ans.: Your EPD monitor works best at its native resolution of 1200 x 1600. For best display, please use this resolution.

Q11: Why does the monitor seems slow using the mouse during operations?

Ans.: The EPD monitor is a bi-stable reflective display which has a lower refresh rate compared to the LCD monitor and is optimized for reading text. Use the SmartRemote app for a quicker and easier way to view your files.

Q12: Where can I find Important Information manual mentioned in EDFU?

Ans.: Important Information manual can be download on the Philips website support page.



2022 © TOP Victory Investments Ltd. All rights reserved.

This product has been manufactured by and is sold under the responsibility of Top Victory Investments Ltd., and Top Victory Investments Ltd. is the warrantor in relation to this product. Philips and the Philips Shield Emblem are registered trademarks of Koninklijke Philips N.V. and are used under license.

Specifications are subject to change without notice.

Version: M1113B1K3300E1WWT