

Philips
LCD monitor

V Line

22 (21.5" / 54.6 cm diag.)
1920 x 1080 (Full HD)

221V8L



Vivid, crisp images beyond boundaries

Philips V line wide-view monitor gives viewing beyond boundaries, great value with essential features. Adaptive-Sync provides flawless viewing without screen tearing. Features like LowBlue mode and flicker-free for easy-on-the eyes.

Vivid pictures every time

- VA display delivers awesome images with wide viewing angles
- 16:9 Full HD display for crisp detailed images
- SmartContrast for rich black details
- SmartImage presets for easy optimized image settings
- Effortlessly smooth action with Adaptive-Sync technology

Easy on the eyes

- Less eye fatigue with Flicker-free technology
- LowBlue Mode for easy on-the-eyes productivity
- EasyRead mode for a paper-like reading experience

Experience true multimedia

- HDMI ensures universal digital connectivity

Perfectly designed for your space

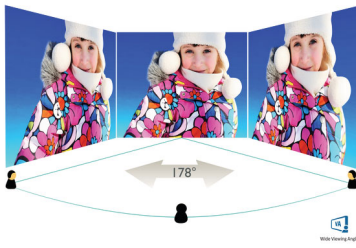
- Compact design saves space
- VESA mount allows for flexibility

PHILIPS

LCD monitor
V Line 22 (21.5" / 54.6 cm diag.), 1920 x 1080 (Full HD)

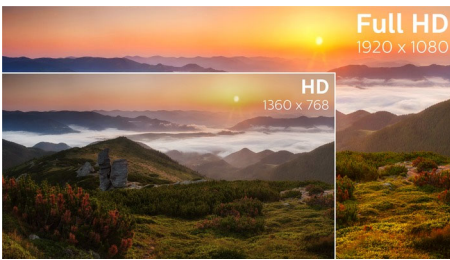
Highlights

VA display



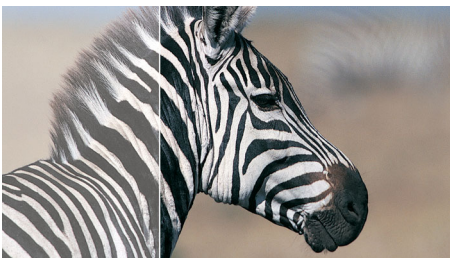
Philips VA LED display uses an advanced multi-domain vertical alignment technology which gives you super-high static contrast ratios for extra vivid and bright images. While standard office applications are handled with ease, it is especially suitable for photos, web-browsing, movies, gaming, and demanding graphical applications. It's optimized pixel management technology gives you 178/178 degree extra wide viewing angle, resulting in crisp images.

16:9 Full HD display



Picture quality matters. Regular displays deliver quality, but you expect more. This display features enhanced Full HD 1920 x 1080 resolution. With Full HD for crisp detail paired with high brightness, incredible contrast and realistic colors expect a true to life picture.

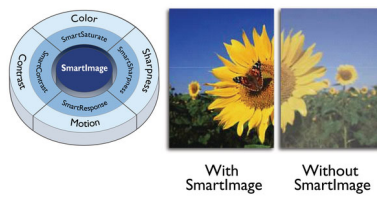
SmartContrast



SmartContrast is a Philips technology that analyzes the contents you are displaying,

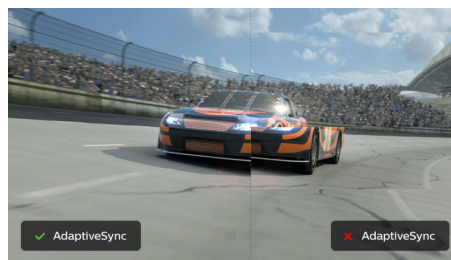
automatically adjusting colors and controlling backlight intensity to dynamically enhance contrast for the best digital images and videos or when playing games where dark hues are displayed. When Economy mode is selected, contrast is adjusted and backlighting fine-tuned for just-right display of everyday office applications and lower power consumption.

SmartImage



SmartImage is an exclusive leading edge Philips technology that analyzes the content displayed on your screen and gives you optimized display performance. This user friendly interface allows you to select various modes like Office, Photo, Movie, Game, Economy etc., to fit the application in use. Based on the selection, SmartImage dynamically optimizes the contrast, color saturation and sharpness of images and videos for ultimate display performance. The Economy mode option offers you major power savings. All in real time with the press of a single button!

Adaptive-Sync technology



Gaming shouldn't be a choice between choppy gameplay or broken frames. Get fluid, artifact-free performance at virtually any framerate with Adaptive-Sync technology, smooth quick refresh and ultra-fast response time.

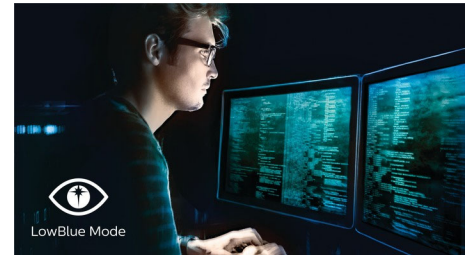
221V8L/71

Flicker-free technology



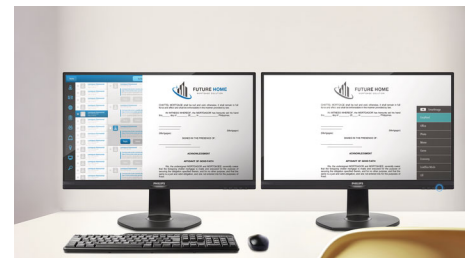
Due to the way brightness is controlled on LED-backlit screens, some users experience flicker on their screen which causes eye fatigue. Philips Flicker-free Technology applies a new solution to regulate brightness and reduce flicker for more comfortable viewing.

LowBlue Mode



Studies have shown that just as ultra-violet rays can cause eye damage, shortwave length blue light rays from LED displays can cause eye damage and affect vision over time. Developed for wellbeing, Philips LowBlue Mode setting uses a smart software technology to reduce harmful shortwave blue light.

EasyRead mode



EasyRead mode for a paper-like reading experience



Specifications

Picture/Display

- LCD panel type: VA LCD
- Backlight type: W-LED system
- Panel Size: 21.5 inch / 54.6 cm
- Display Screen Coating: Anti-glare, 3H, Haze 25%
- Effective viewing area: 478.656 (H) x 260.28 (V)
- Aspect ratio: 16:9
- Maximum resolution: 1920 x 1080 @ 75 Hz*
- Pixel Density: 102 PPI
- Response time (typical): 4 ms (GtG)*
- Brightness: 250 cd/m²
- Contrast ratio (typical): 3000:1
- SmartContrast: Mega Infinity DCR
- Pixel pitch: 0.2493 x 0.241 mm
- Viewing angle: 178° (H) / 178° (V), @ C/R > 10
- Display colors: 16.7 M
- Picture enhancement: SmartImage
- Scanning Frequency: 30 - 85 kHz (H) / 48 - 75 Hz (V)
- sRGB
- Flicker-free
- LowBlue Mode
- EasyRead
- Adaptive sync

Connectivity

- Signal Input: VGA (Analog), HDMI 1.4
- Sync Input: Separate Sync, Sync on Green
- Audio (In/Out): Audio out

Convenience

- User convenience: Power On/Off, Menu/OK, Brightness/UP, Input/Down, SmartImage/Back
- OSD Languages: Brazil Portuguese, Czech, Dutch, English, Finnish, French, German, Greek, Hungarian, Italian, Japanese, Korean, Polish, Portuguese, Russian, Spanish, Simplified Chinese, Swedish, Turkish, Traditional Chinese, Ukrainian
- Other convenience: Kensington lock, VESA mount (100x100mm)
- Plug & Play Compatibility: DDC/CI, Mac OS X, sRGB, Windows 10 / 8.1 / 8 / 7

Stand

- Tilt: -5/20 degree

Power

- On mode: 13.3 W (typ.) (EnergyStar test method)
- Standby mode: 0.5 W (typ.)
- Off mode: 0.3 W (typ.)
- Power LED indicator: Operation - White, Standby mode- White (blinking)
- Power supply: Built-in, 100-240VAC, 50-60Hz

Dimensions

- Product with stand (mm): 493 x 369 x 220 mm
- Product without stand (mm): 493 x 286 x 44 mm
- Packaging in mm (WxHxD): 565 x 440 x 111 mm

Weight

- Product with stand (kg): 2.69 kg
- Product without stand (kg): 2.30 kg
- Product with packaging (kg): 3.73 kg

Operating conditions

- Temperature range (operation): 0°C to 40°C °C
- Temperature range (storage): -20°C to 60°C °C
- Relative humidity: 20%-80 %
- Altitude: Operation: +12,000ft (3,658m), Non-operation: +40,000ft (12,192m)
- MTBF: 50,000 (Excluded backlight) hour(s)

Sustainability

- Environmental and energy: EnergyStar 8.0, RoHS, Mercury Free
- Recyclable packaging material: 100 %

Compliance and standards

- Regulatory Approvals: CB, CE Mark, cETLus, FCC Class B, ICES-003

Cabinet

- Color: Black
- Finish: Textured



Issue date 2022-04-21

Version: 2.0.1

12 NC: 8670 001 72557
EAN: 87 12581 77318 2

© 2022 Koninklijke Philips N.V.
All Rights reserved.

Specifications are subject to change without notice.
Trademarks are the property of Koninklijke Philips N.V.
or their respective owners.

www.philips.com

* The maximum resolution works for HDMI input only.
* Response time value equal to SmartResponse
* The monitor may look different from feature images.