



Philips Momentum
4K HDR display with
Ambiglow

Momentum

43 (42.51" / 108 cm diag.)
3840 x 2160 (4K UHD)



439M1RV

Optimized performance for next-gen gaming

Get in the moment with this Momentum gaming monitor with immersive Ambiglow. An ultra-clear 4K picture at 144Hz, Sync technology and low Input lag deliver a smooth gaming feel. DisplayHDR 400 gives ultra-crisp and vibrant image quality.

Meet the most recent update of HDMI specification

- AMD FreeSync™ Premium Pro; smooth, low latency HDR gaming
- 4K / 144Hz PC gaming on the big screen
- Smooth console gaming at 4K / 120Hz
- Purpose-built for low latency gaming
- SmartImage HDR gives optimal viewing from your HDR content

Design to enhance the senses

- Ambiglow adds a new dimension to your viewing experience
- Enhanced audio with DTS Sound™

Features for gamers needs

- USB-C one cable does it all
- LowBlue mode and Flicker-free easy-on-the eyes viewing
- Access and display multiple sources on two devices
- MultiView enables simultaneous dual connection and view
- VA display delivers awesome images with wide viewing angles



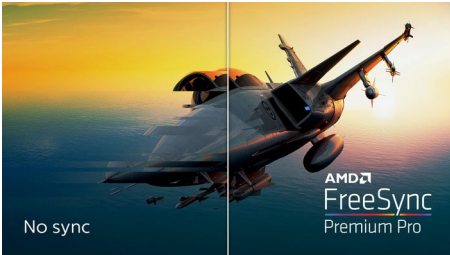
reddot winner 2020

PHILIPS

4K HDR display with Ambiglow
Momentum 43 (42.51" / 108 cm diag.), 3840 x 2160 (4K UHD)

Highlights

AMD FreeSync™ Premium Pro



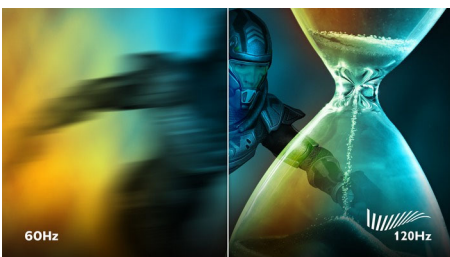
Gaming shouldn't be a choice between choppy gameplay or broken frames. This display is certified with AMD FreeSync™ Premium Pro, which provides a variable refresh rate (VRR) and the true HDR gaming experience. This provides a combination of smooth gaming at peak performance, and exceptional high dynamic range visuals while still maintaining low latency.

4K / 144Hz PC gaming



PC gamers who demand a true 4K gaming experience with the fastest refresh rate of 144Hz can now enjoy even smoother performance with the included connections.

4K / 120Hz Console gaming



Game with ultra-clear 4K resolution at a smooth 120Hz refresh rate when you connect your Xbox Series X & other next-gen consoles via one of multiple HDMI 2.1 connections. A

faster refresh rate ensures less skipped frames, showing enemy movement in ultra-clear, smooth motion to easily target them.

Low Latency Gaming



Unlike standard TVs, Philips Momentum gaming displays are purpose-built with low lag and lighting fast pixel response as a priority and supports fast-paced, reaction time-sensitive games. The display also provides variable refresh rate (VRR) support for Xbox Series X to achieve seamlessly smooth motion.

SmartImage HDR



Select one of SmartImage HDR modes to best suit your needs. HDR Game: Optimize for playing video games. With brighter white and darker black, the gaming scene is vivid and revealing more details, easily spot enemies hiding in the dark corner and shadows. HDR Movie: Ideal for watching HDR movie. Deliver better contrast and brightness for more realistic and immerse viewing experience. HDR Photo: Enhance red, green, and blue for lively visuals. DisplayHDR: VESA DisplayHDR certified*. Personal: Customize settings in picture menu. *Please refer to specification for HDR grade.

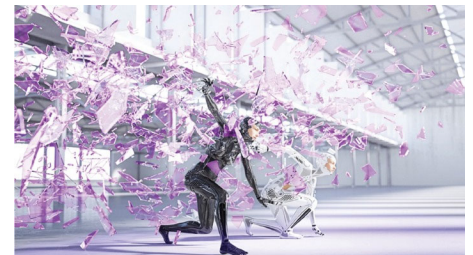
439M1RV/71

Ambiglow



The innovative Ambiglow technology enhances the content on the screen by creating a halo of light from the monitor. Its fast processor analyses the incoming image content, continuously adapts the color and brightness of the emitted light to match the image. Especially suited for watching movies, sports or playing games, Philips Ambiglow offers you a unique and immersive viewing experience.

DTS Sound™



DTS Sound is an audio processing solution designed to optimize the playback of music, movies, streaming and games on the PC regardless of form factors. DTS Sound enables an immersive virtual surround sound experience, complete with rich bass and dialog enhancement and maximized volume levels free of any clipping or distortion.



reddot winner 2020

Red Dot

Red Dot stands for belonging to the best in design and business

This gaming monitor scores with the striking base, which radiates a solid presence and thereby underlines the quality of the monitor.



USB-C



Specifications

Picture/Display

- LCD panel type: VA LCD
- Backlight type: W-LED system
- Panel Size: 42.51 inch / 108 cm
- Color gamut (min.): DCI-P3 Coverage: 95.6%*
- Color gamut (typical): NTSC 106.8%*, sRGB 127.7%*, Adobe RGB 90.4%*
- HDR: DisplayHDR 400 certified
- Effective viewing area: 941.18 (H) x 529.412 (V) mm
- Aspect ratio: 16:9
- Maximum resolution: HDMI / DP: 3840 x 2160 @ 144 Hz*; USB-C: 3840 x 2160 @ 120 Hz
- Pixel Density: 103.64 PPI
- Response time (typical): 4 ms (Gray to Gray)*
- MPRT: 1 ms
- Low Input Lag
- Brightness: 550 cd/m²
- SmartContrast: Mega Infinity DCR
- Contrast ratio (typical): 4000:1
- Pixel pitch: 0.2451 x 0.2451 mm
- Viewing angle: 178° (H) / 178° (V), @ C/R > 10
- Picture enhancement: SmartImage game
- Display colors: Color support 1.07 billion colors
- Scanning Frequency: HDMI: 30 - 135 kHz (H) / 48 - 144 Hz (V); DP: 30 - 254 kHz (H) / 48 - 144 Hz (V); USB C: 30 - 254 kHz (H) / 48 - 120 Hz (V)
- SmartUniformity: 93 ~ 105%
- Delta E: < 2 (sRGB)
- sRGB
- Flicker-free
- LowBlue Mode
- Ambiglow: 4-sided
- HDMI 2.1 Feature: VRR, FRL
- AMD FreeSync™ technology: Premium Pro

Connectivity

- Signal Input: HDMI 2.1 x 3, DisplayPort 1.4 x 1, USB-C x 1 (DP Alt mode, PD 65W)
- HDCP: HDCP 2.2 (HDMI)
- USB: USB-B x 1 (upstream), USB 3.2 x 4 (downstream with 2 fast charge B.C 1.2)
- Sync Input: Separate Sync
- Audio (In/Out): Audio out
- EasyLink (HDMI-CEC): Remote control pass-through, System audio control, System standby

USB

- DP: Built-in Display Port Alt mode
- Super speed: Data and Video transfer
- Power delivery: USB PD version 3.0
- USB-C max. power delivery: Up to 65W (5V/3A, 7V/3A, 9V/3A, 10V/3A, 12V/3A, 15V/3A, 20V/3.25A)

Convenience

- Built-in Speakers: 7 W x 2, DTS Sound
- MultiView: PBP (2x devices)
- KVM: USB-C, USB-B
- User convenience: Power On/Off, Menu/OK,

- Input/Up, Sound Mode/Down, SmartImage game/Back
- OSD Languages: Brazil Portuguese, Czech, Dutch, English, Finnish, French, German, Greek, Hungarian, Italian, Japanese, Korean, Polish, Portuguese, Russian, Spanish, Simplified Chinese, Swedish, Turkish, Traditional Chinese, Ukrainian
- Other convenience: Kensington lock, VESA mount (200x200mm)
- Plug & Play Compatibility: DDC/CI, Mac OS X, sRGB, Windows 10 / 8.1 / 8 / 7

Stand

- Height adjustment: 110 mm
- Swivel: -/+ 20 degree
- Tilt: -5/15 degree

Power

- On mode: 64.4 W (typ.)
- Standby mode: 0.5 W (typ.)
- Off mode: 0.3 W (typ.)
- Power LED indicator: Operation - White, Standby mode- White (blinking)
- Power supply: Internal, 100-240VAC, 50-60Hz

Dimensions

- Product with stand(max height): 978 x 738 x 341 mm
- Product without stand (mm): 978 x 573 x 78 mm
- Packaging in mm (WxHxD): 1150 x 704 x 284 mm

Weight

- Product with stand (kg): 18.00 kg
- Product without stand (kg): 12.80 kg
- Product with packaging (kg): 23.69 kg

Operating conditions

- Temperature range (operation): 0°C to 40 °C
- Temperature range (storage): -20°C to 60 °C
- Relative humidity: 20%-80 %
- Altitude: Operation: +12,000ft (3,658m), Non-operation: +40,000ft (12,192m)
- MTBF: 50,000 (Excluded backlight) hour(s)

Sustainability

- Environmental and energy: RoHS
- Recyclable packaging material: 100 %
- Specific Substances: Mercury free, PVC / BFR free housing

Compliance and standards

- Regulatory Approvals: CB, CE Mark, FCC Class B, ICES-003

Cabinet

- Color: Black
- Finish: Textured / Glossy

Accessories

- Included accessories: Remote Control



Issue date 2023-04-10

Version: 4.0.1

12 NC: 8670 001 81573
EAN: 87 12581 78541 3

© 2023 Koninklijke Philips N.V.
All Rights reserved.

Specifications are subject to change without notice.
Trademarks are the property of Koninklijke Philips N.V.
or their respective owners.

www.philips.com

* The maximum resolution works for either HDMI input or DP input.

* For best output performance, please always ensure that your graphic card is capable of achieving the maximum resolution and refresh rate of this Philips display.

* Response time value equal to SmartResponse

* MPRT is to adjust brightness for blur reduction, so cannot adjust brightness while MPRT is turned on. To reduce motion blur, LED backlight will strobe synchronously with screen refresh, which may cause noticeable brightness change.

* MPRT is gaming-optimized mode. Turn on MPRT may cause noticeable screen flickering. It is recommended to turn off when you are not using the gaming function.

* DCI-P3 Coverage based on CIE1976

* NTSC Area based on CIE1976

* sRGB Area based on CIE1931

* Adobe RGB Coverage based on CIE1976

* For USB-C power and charging function, your Notebook/device must support USB-C standard Power Delivery specifications. Please check with your Notebook user manual or manufacturer for more details.

* For Video transmission via USB-C, your Notebook/device must support USB-C DP Alt mode

* 2020 Advanced Micro Devices, Inc. All rights reserved. AMD, the AMD Arrow logo, AMD FreeSync™ and combinations thereof are trademarks of Advanced Micro Devices, Inc. Other product names used in this publication are for identification purposes only and may be trademarks of their respective companies.

* The monitor may look different from feature images.