



LCD monitor, LED backlight with PowerSensor

- B Line
- 19" (48.3 cm)
- 1280 x 1024

19B4LPCB/00

## Sustainable eco design display

with PowerSensor saves energy bills

The Philips PowerSensor LED display using 65% post consumer recycled plastics and PVC, BFR free housing is ideal for eco-friendly productivity

### Benefits

#### Sustainable Eco-design

- PowerSensor saves up to 80% energy costs
- 65% post consumer recycled plastics with TCO Edge
- PVC-BFR free housing
- Zero power consumption with 0 watt hard switch

#### Excellent performance

- LED technology ensures natural colors
- Built-in stereo speakers for multimedia
- TrueVision ensures lab quality images

#### Designed for people

- SmartErgoBase enables people-friendly ergonomic adjustments
- Low bezel-to-table height for maximum reading comfort

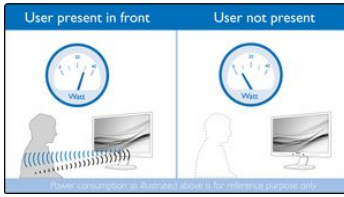
#### Easy to experience

- USB Hub with 2 ports for easy connections
- SmartImage presets for easy optimized image settings

**PHILIPS**

## Features

### PowerSensor



PowerSensor is a built-in 'people sensor' that transmits and receives harmless infrared signals to determine if user is present and automatically reduces monitor brightness when user steps away from the desk, cutting energy costs by up to 80 percent and prolonging monitor life

### LED technology

White LED's are solid state devices which light up to full, consistent brightness faster saving startup time. LED's are free from mercury content which allows for eco-friendly recycling and disposal process. LED's allow for better dimming control of LCD backlight, resulting in super high contrast ratio. It also gives superior color reproduction thanks to consistent brightness across the screen.

### SmartErgoBase



The SmartErgoBase is a monitor base that delivers ergonomic display comfort and provides cable management. The base's people-friendly height, swivel, tilt and rotation angle adjustments position the monitor for maximum comfort that can ease the physical strains of a long workday; cable management reduces cable clutter and keeps the workspace neat and professional.

### Low bezel-to-table height



The Philips monitor, thanks to its advanced SmartErgoBase, can be lowered down almost to desk level for a comfortable viewing angle. Low bezel-to-table height is the perfect solution if you use bifocals, trifocals or progressive lens glasses for your computing work. Additionally, it allows for users with greatly different heights to use the monitor in their preferred angle and height settings, helping them reduce fatigue and strain.

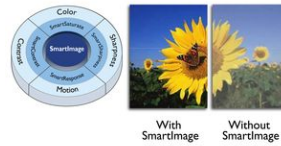
### Built-in stereo speakers

A pair of high quality stereo speakers built into a display device. It can be visible front firing, or invisible down firing, top firing, rear firing, etc depending on model and design.

### 2 Ports USB 2.0 HUB

USB Hub allows user to conveniently connect their plug and play multimedia devices such as USB memory devices, camera, portable HDD, Web camera, PDA, Printer and many other devices which has USB connection available. The conveniently located USB 2.0 Hub on the monitor allows USB 2.0 signals to pass thru to the computer. Note that many devices like cameras and HDD may need to be powered On independently, as they have higher power requirements than the monitor USB Hub can provide.

### SmartImage



SmartImage is an exclusive leading edge Philips technology that analyzes the content displayed on your screen and gives you optimized display performance. This user friendly interface allows you to select various modes like Office, Photo, Movie, Game, Economy etc., to fit the application in use. Based on the selection, SmartImage dynamically optimizes the contrast, color saturation and sharpness of images and videos for ultimate display performance. The Economy mode option offers you major power savings. All in real time with the press of a single button!

### TrueVision



TrueVision is a proprietary Philips technology that uses advanced algorithm for testing and aligning monitor display which gives you the ultimate display performance. Philips ensures TrueVision monitors leave the factory fine-tuned with this process giving you consistent color and picture quality.

### TCO Edge

TCO Edge certification is given to products which go beyond existing eco-labeling programs. Over and above standard TCO requirements, it further mandates that the product uses minimum 65% of post consumer recycled plastics, is energy efficient, uses minimal hazardous materials, has 100% recyclable packaging, and is designed for easy recycling amongst other requirements. You can rest assured that this Philips monitor is a cutting edge technology product which is best in class ICT, benefitting you and the planet while helping you make a responsible green IT purchase!

### PVC-BFR free housing

This Philips monitor housing is free from brominated flame retardant and polyvinyl chloride (PVC-BFR free)

### Zero power consumption

At the flick of the 0 watt hard switch which is conveniently located at the back, you can completely cut-off your monitor from AC power. This results in zero power consumption reducing your carbon footprint even further

## Specifications

Please note that this is a pre-sales leaflet. The contents of this leaflet reflect the best of our knowledge per date and country mentioned above. The contents of this leaflet are subject to change without notice. Philips does not accept any liability as to the contents of this leaflet.

### Picture/Display

LCD panel type	TFT-LCD
Backlight type	W-LED system
Panel Size	19 inch / 48.3 cm
Effective viewing area	376.3 (H) x 301.1 (V)
Aspect ratio	5:4
Optimum resolution	1280 x 1024 @ 60Hz
Response time (typical)	5 ms
Brightness	250 cd/m <sup>2</sup>
Contrast ratio (typical)	1,000:1
SmartContrast	20,000,000:1
Pixel pitch	0.294 x 0.294 mm
Viewing angle	170° (H) / 160° (V) @ C/R > 10
Picture enhancement	SmartImage
Display colors	16.7 M
Scanning Frequency sRGB	30 - 83 kHz (H) / 56 - 75 Hz (V) Yes

### Connectivity

Signal Input	DVI-D (digital, HDCP) VGA (Analog )
USB	USB 2.0 x 2
Sync Input	Separate Sync Sync on Green
Audio (In/Out)	PC audio-in Headphone out

### Convenience

Built-in Speakers	1.5Wx2
User convenience	SmartImage Volume PowerSensor Menu Power On/Off
Control software	SmartControl Premium
OSD Languages	English French German Italian Portuguese Russian Simplified Chinese Spanish
Other convenience	Kensington lock VESA mount (100x100mm)
Plug & Play Compatibility	DDC/CI Mac OS X sRGB Windows 7/Vista/XP

### Stand

Height adjustment	110 mm
Pivot	90 degree
Swivel	-65/65 degree
Tilt	-5/20 degree

### Power

ECO mode	12.6 W (typ.)
On mode	19.2 W (typ.) (EnergyStar 5.0 test method)
Standby mode	0.1W
Off mode	Zero watts with Zero switch

Power LED indicator	Operation - White Standby mode- White (blinking)
Power supply	100-240VAC, 50/60Hz Built-in

### Dimensions

Product with stand (mm)	404 x 394 x 227 mm
Product without stand (mm)	404 x 347 x 55 mm
Packaging in mm (WxHxD)	444 x 400 x 174 mm

### Weight

Product with stand (kg)	4.84 kg
Product without stand (kg)	3.03 kg
Product with packaging (kg)	5.71 kg

### Operating conditions

Temperature range (operation)	0°C to 40°C °C
Temperature range (storage)	-20°C to 60°C °C
Relative humidity	20%-80 %
MTBF	30,000 hour(s)

### Sustainability

Environmental and energy	PowerSensor EnergyStar 5.0 EPEAT Gold* TCO edge RoHS TCO 5.2
Recyclable packaging material	100 %
Post consumer recycled plastic	65%
Specific Substances	PVC / BFR free housing Mercury free Lead free

### Compliance and standards

Regulatory Approvals	BSMI CE Mark FCC Class B GOST SASO SEMKO TUV Ergo TUV/GS UL/cUL WEEE
----------------------	---

### Cabinet

Front bezel	Black
Rear cover	Black
Foot	Black
Finish	Texture

\* EPEAT Gold is valid only where Philips registers the product. Please visit [www.epeat.net](http://www.epeat.net) for registration status in your country.



data subject to change  
2017, July 28

Version: 3.0.2  
UPC: 8712581626501

© 2017 Koninklijke Philips N.V.  
All rights reserved.

Specifications are subject to change without notice. Trademarks are the property of Koninklijke Philips N.V. or their respective owners.

[www.philips.com](http://www.philips.com)