



Philips Brilliance
LCD monitor, LED
backlight with
PowerSensor

- B-line
- 22" / 55.9 cm
- 1680x1050

Brilliance

220B4LPCB



Sustainable eco design display

with PowerSensor saves energy bills

The Philips PowerSensor LED display using 65% post consumer recycled plastics and PVC, BFR free housing is ideal for eco-friendly productivity

Sustainable Eco-design

- PowerSensor saves up to 80% energy costs
- Zero power consumption with 0 watt hard switch
- 65% post consumer recycled plastics with TCO Edge
- PVC-BFR free housing

Excellent performance

- LED technology ensures natural colors
- TrueVision ensures lab quality images
- Built-in stereo speakers for multimedia

Designed for people

- SmartErgoBase enables people-friendly ergonomic adjustments
- Low bezel-to-table height for maximum reading comfort

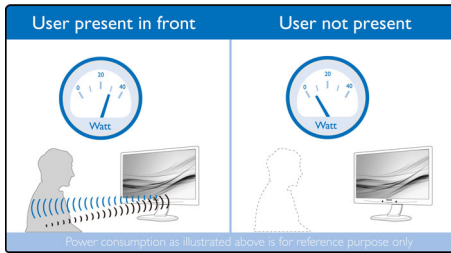
Easy to experience

- SmartImage presets for easy optimized image settings
- USB Hub with 2 ports for easy connections

PHILIPS

Highlights

PowerSensor



PowerSensor is a built-in 'people sensor' that transmits and receives harmless infrared signals to determine if user is present and automatically reduces monitor brightness when user steps away from the desk, cutting energy costs by up to 80 percent and prolonging monitor life

LED technology

White LED's are solid state devices which light up to full, consistent brightness faster saving startup time. LED's are free from mercury content which allows for eco-friendly recycling and disposal process. LED's allow for better dimming control of LCD backlight, resulting in super high contrast ratio. It also gives superior color reproduction thanks to consistent brightness across the screen.

SmartErgoBase

The SmartErgoBase is a monitor base that delivers ergonomic display comfort and provides cable management. The base's people-friendly height, swivel, tilt and rotation angle adjustments position the monitor for maximum comfort that can ease the physical strains of a long workday; cable management reduces cable clutter and keeps the workspace neat and professional.

Low bezel-to-table height



The Philips monitor, thanks to its advanced SmartErgoBase, can be lowered down almost to desk level for a comfortable viewing angle.

Low bezel-to-table height is the perfect solution if you use bifocals, trifocals or progressive lens glasses for your computing work. Additionally, it allows for users with greatly different heights to use the monitor in their preferred angle and height settings, helping them reduce fatigue and strain.

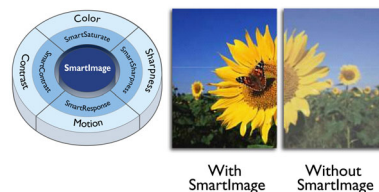
Built-in stereo speakers

A pair of high quality stereo speakers built into a display device. It can be visible front firing, or invisible down firing, top firing, rear firing, etc depending on model and design.

2 Ports USB 2.0 HUB

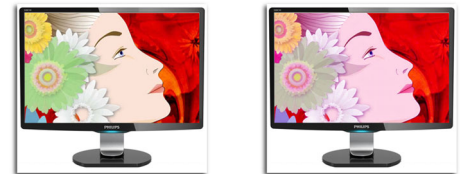
USB Hub allows user to conveniently connect their plug and play multimedia devices such as USB memory devices, camera, portable HDD, Web camera, PDA, Printer and many other devices which has USB connection available. The conveniently located USB 2.0 Hub on the monitor allows USB 2.0 signals to pass thru to the computer. Note that many devices like cameras and HDD may need to be powered On independently, as they have higher power requirements than the monitor USB Hub can provide.

SmartImage



SmartImage is an exclusive leading edge Philips technology that analyzes the content displayed on your screen and gives you optimized display performance. This user friendly interface allows you to select various modes like Office, Photo, Movie, Game, Economy etc., to fit the application in use. Based on the selection, SmartImage dynamically optimizes the contrast, color saturation and sharpness of images and videos for ultimate display performance. The Economy mode option offers you major power savings. All in real time with the press of a single button!

TrueVision



TrueVision is a proprietary Philips technology that uses advanced algorithm for testing and aligning monitor display which gives you the ultimate display performance that is 4 times more stringent than Windows sRGB requirements. Only Philips ensures each and every monitor that leaves the factory is fine tuned with this process so you can get consistent color and picture quality.

TCO Edge

TCO Edge certification is given to products which go beyond existing eco-labeling programs. Over and above standard TCO requirements, it further mandates that the product uses minimum 65% of post consumer recycled plastics, is energy efficient, uses minimal hazardous materials, has 100% recyclable packaging, and is designed for easy recycling amongst other requirements. You can rest assured that this Philips monitor is a cutting edge technology product which is best in class ICT, benefitting you and the planet while helping you make a responsible green IT purchase!

PVC-BFR free housing

This Philips monitor housing is free from brominated flame retardant and polyvinyl chloride (PVC-BFR free)

Zero power consumption

At the flick of the 0 watt hard switch which is conveniently located at the back, you can completely cut-off your monitor from AC power. This results in zero power consumption reducing your carbon footprint even further



Specifications

Picture/Display

- LCD panel type: TFT-LCD
- Backlight type: W-LED system
- Panel Size: 22 inch / 55.9 cm
- Effective viewing area: 473.76 (H) x 296.1 (V)
- Aspect ratio: 16:10
- Optimum resolution: 1680 x 1050 @ 60Hz
- Response time (typical): 5 ms
- Brightness: 250 cd/m²
- Contrast ratio (typical): 1000:1
- SmartContrast: 20,000,000:1
- Pixel pitch: 0.282 x 0.282 mm
- Viewing angle: 170° (H) / 160° (V), @ C/R > 10
- Picture enhancement: SmartImage
- Display colors: 16.7 M
- Scanning Frequency: 30 - 83 kHz (H) / 56 - 75 Hz (V)
- sRGB

Connectivity

- Signal Input: DVI-D (digital, HDCP), VGA (Analog)
- USB: USB 2.0 x 2
- Sync Input: Separate Sync, Sync on Green
- Audio In/Out: PC audio-in, Headphone out

Convenience

- Built-in Speaker: 1.5Wx2
- User convenience: SmartImage, Volume, PowerSensor, Menu, Power On/Off
- Control software: SmartControl Premium
- OSD Languages: English, French, German, Italian, Portuguese, Russian, Simplified Chinese, Spanish
- Other convenience: Kensington lock, VESA mount (100x100mm)
- Plug & Play Compatibility: DDC/CI, Mac OS X, sRGB, Windows 7/Vista/XP

Stand

- Height adjustment: 110 mm
- Pivot: 90 degree
- Swivel: -65/65 degree
- Tilt: -5/20 degree

Power

- ECO mode: 11.7W (typ.)

- On mode: 15.8W (typ.) (EnergyStar 5.0 test method)
- Standby mode: 0.3W
- Off mode: Zero watts with Zero switch
- Power LED indicator: Operation - White, Standby mode- White (blinking)
- Power supply: Built-in, 100-240VAC, 50-60Hz

Dimensions

- Product with stand (mm): 504 x 509 x 227 mm
- Product without stand (mm): 504 x 349 x 59 mm
- Packaging in mm (WxHxD): 565 x 391 x 186 mm

Weight

- Product with stand (kg): 5.20 kg
- Product without stand (kg): 3.38 kg
- Product with packaging (kg): 7.05 kg

Operating conditions

- Temperature range (operation): 0°C to 40°C °C
- Temperature range (storage): -20°C to 60°C °C
- Relative humidity: 20%-80 %
- Altitude: Operation: +12,000ft (3,658m), Non-operation: +40,000ft (12,192m)
- MTBF: 30,000 hour(s)

Sustainability

- Environmental and energy: PowerSensor, EnergyStar 5.0, EPEAT Gold*, RoHS, TCO edge
- Recyclable packaging material: 100 %
- Post consumer recycled plastic: 65%
- Specific Substances: PVC / BFR free housing, Mercury free, Lead free

Compliance and standards

- Regulatory Approvals: BSMI, CE Mark, FCC Class B, GOST, SASO, SEMKO, TCO 5.2, TUV Ergo, TUV/GS, UL/cUL, WEEE

Cabinet

- Front bezel: Black
- Rear cover: Black
- Foot: Black
- Finish: Texture



Issue date 2013-06-06

Version: 2.0.1

12 NC: 8670 000 96847
EAN: 87 12581 66416 9

© 2013 Koninklijke Philips N.V.
All Rights reserved.

Specifications are subject to change without notice.
Trademarks are the property of Koninklijke Philips N.V.
or their respective owners.

www.philips.com

* EPEAT Gold is valid only where Philips registers the product. Please visit www.epeat.net for registration status in your country.