



Philips  
LED-backlit LCD monitor  
with SmartImage

**S Line**  
27" (68.6 cm)  
Quad HD (2560 x 1440)

**272S4LPJCB**



## Essential features, efficient performance

for maximum productivity

The Philips LED display using 25% recycled materials and PVC, BFR free housing is ideal for eco-friendly productivity

### Great performance

- Crystal clear images with Quad HD 2560 x 1440 pixels
- Less eye fatigue with Flicker-Free technology
- MultiView enables simultaneous dual connect and view
- SmartImage pre-sets for easy optimised image settings

### Designed for people

- SmartErgoBase enables user-friendly ergonomic adjustments
- Low bezel-to-table height for maximum reading comfort
- Built-in stereo speakers for multimedia
- MHL technology for enjoying mobile content on a big screen
- SmartConnect with HDMI, MHL, DisplayPort, DVI and VGA

### Sustainable Eco-design

- LED Technology ensures low power and natural colours
- PowerSensor saves up to 80% energy costs

# PHILIPS

# Highlights

## CrystalClear images

These latest Philips screens deliver CrystalClear, Quad HD 2560x1440 or 2560x1080 pixel images. Utilising high-performance panels with a high-density pixel count, enabled by high-bandwidth sources like DisplayPort, HDMI, Dual link DVI, these new displays will make your images and graphics come alive. Whether you are a demanding professional requiring extremely detailed information for CAD-CAM solutions, using 3D graphic applications or a financial wizard working on huge spreadsheets, Philips displays will give you CrystalClear images.

## Flicker-Free technology

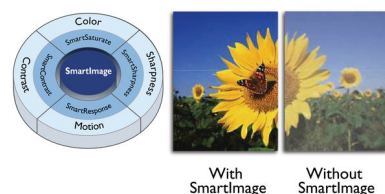


Due to the way brightness is controlled on LED-backlit screens, some users experience flicker on their screen which causes eye fatigue. Philips Flicker-Free technology applies a new solution to regulate brightness and reduce flicker for more comfortable viewing.

## MultiView technology

With the ultra-high resolution Philips MultiView display, you can now experience a world of connectivity. MultiView enables active dual connect and view so that you can work with multiple devices like a PC and notebook simultaneously, for complex multitasking.

## SmartImage



SmartImage is an exclusive leading edge Philips technology that analyses the content displayed

on your screen and optimises your display performance. This user-friendly interface allows you to select various modes, like Office, Photo, Movie, Game, Economy etc., to fit the application in use. Based on the selection, SmartImage dynamically optimises the contrast, colour saturation and sharpness of images and videos for ultimate display performance. The Economy mode option offers you major power savings. All in real time at the touch of a single button!

## SmartErgoBase



The SmartErgoBase is a monitor base that delivers ergonomic display comfort and provides cable management. The user-friendly height, swivel, tilt and rotation angle adjustments of the base allow the monitor to be positioned for maximum comfort to help ease the physical strains of a long workday. In addition, cable management reduces cable clutter and keeps the workspace neat and professional.

## Built-in stereo speakers

A pair of high-quality stereo speakers built into a display device. They may be visible front firing, or invisible down firing, top firing, rear firing etc. depending on model and design.

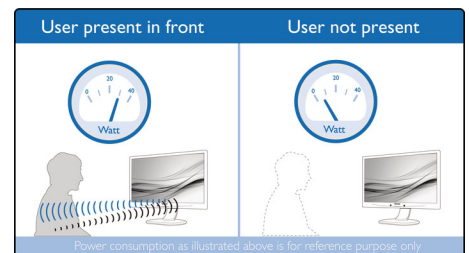
## SmartConnect

With a plethora of connectivity, these Philips displays come equipped with multiple connections like VGA, DVI-D, DisplayPort, universal HDMI connector and MHL, enabling you to enjoy high-resolution uncompressed video and audio content. Regardless of what source you use, you can rest assured that this Philips display will ensure your investment is not made obsolete any time soon!

## LED Technology

White LED's are solid state devices which light up to full, consistent brightness faster saving startup time. LED's are free from mercury content, which allows for eco-friendly recycling and disposal process. LED's allow for better dimming control of the LCD backlight, resulting in a super high contrast ratio. It also gives superior colour reproduction thanks to consistent brightness across the screen.

## PowerSensor



PowerSensor is a built-in 'people sensor' that transmits and receives harmless infrared signals to determine if the user is present and then automatically reduces monitor brightness when then user steps away from the desk, cutting energy costs by up to 80 percent and prolonging monitor life

## MHL technology



Mobile High-Definition Link (MHL) is a mobile audio/video interface for directly connecting mobile phones and other portable devices to high-definition displays. An optional MHL cable allows you to simply connect your MHL-capable mobile device to this large Philips MHL display and watch your HD videos come to life with full digital sound. Now not only can you enjoy your mobile games, photos, movies or other apps on its big screen, you can simultaneously charge your mobile device so you never run out of power halfway.

# Specifications

## Picture/Display

- LCD panel type: TFT-LCD
- Backlight type: W-LED system
- Panel Size: 27 inch/68.6 cm
- Effective viewing area: 596.7 (H) x 335.7 (V)
- Aspect ratio: 16:9
- Optimum resolution: 2560 x 1440 @ 60Hz
- Response time (typical): 2 ms (Grey to Grey)\*
- Brightness: 350 cd/m<sup>2</sup>
- Contrast ratio (typical): 1000:1
- SmartContrast: 20,000,000:1
- Pixel pitch: 0.233 x 0.233 mm
- Viewing angle: 170° (H)/160° (V), @ C/R > 10
- Picture enhancement: SmartImage
- Display colours: 16.7 M
- Scanning Frequency: 30 - 83 kHz (H) / 56 - 76 Hz (V)
- MHL: 1080P @ 60 Hz
- sRGB

## Connectivity

- Signal Input: DVI-D (digital, HDCP), VGA (Analogue), DisplayPort, MHL-HDMI (digital, HDCP)
- Sync Input: Separate Sync, Sync on Green
- Audio (In/Out): PC audio-in, Headphone out

## Convenience

- Built-in Speakers: 2 W x 2
- User convenience: SmartImage, Multi-view, User, Menu, Power On/Off
- Control software: SmartControl
- OSD Languages: Brazil Portuguese, Czech, Dutch, English, Finnish, French, German, Greek, Hungarian, Italian, Japanese, Korean, Polish, Portuguese, Russian, Simplified Chinese, Spanish, Swedish, Traditional Chinese, Turkish, Ukrainian
- Other convenience: Kensington lock, VESA mount (100 x 100 mm)
- Plug and Play Compatibility: DDC/CI, Mac OS X, sRGB, Windows 10 / 8.1 / 8 / 7

## Stand

- Height adjustment: 120 mm
- Pivot: 90 degree
- Swivel: -65/65 degree
- Tilt: -5/20 degree

## Power

- ECO mode: 22 W (typ.)

- On mode: 47 W (typ.)
- Standby mode: <0.5 W (typ.)
- Off mode: <0.3 W (typ.)
- Power LED indicator: Operation - White, Standby mode - White (flashing)
- Power supply: Built-in, 100-240 VAC, 50-60 Hz

## Dimensions

- Product with stand (mm): 639 x 540 x 244 mm
- Product without stand (mm): 639 x 405 x 68 mm
- Packaging in mm (W x H x D): 740 x 490 x 299 mm

## Weight

- Product with stand (kg): 6.72 kg
- Product without stand (kg): 4.40 kg
- Product with packaging (kg): 10.60 kg

## Operating conditions

- Temperature range (operation): 0°C to 40°C °C
- Temperature range (storage): -20°C to 60°C °C
- Relative humidity: 20%–80% %
- Altitude: Operation: +12,000 ft (3658 m), Non-operation: +40,000 ft (12,192 m)
- MTBF (demonstrated): 70,000 hrs (excluded backlight)

## Sustainability

- Environmental and energy: PowerSensor, RoHS
- Recyclable packaging material: 100 %
- Recycled material: 25%
- Specific Substances: PVC/BFR free housing, Mercury free, Lead free

## Compliance and standards

- Regulatory Approvals: CE Mark, FCC Class B, CU-EAC, TUV/GS, TUV Ergo, cETLus, BSMI, EPA, PSB, C-tick, SEMKO, WEEE, TCO certified

## Cabinet

- Front bezel: Black
- Rear cover: Black
- Foot: Black
- Finish: Texture

## What's in the box?

- Monitor with stand
- Cables: VGA, DVI, DP, Audio, Power
- User Documentation



Issue date 2018-11-07

Version: 5.0.2

12 NC: 8670 001 20816  
EAN: 87 12581 72904 2

© 2018 Koninklijke Philips N.V.  
All Rights reserved.

Specifications are subject to change without notice.  
Trademarks are the property of Koninklijke Philips N.V.  
or their respective owners.

[www.philips.com](http://www.philips.com)

\* This Philips display is MHL-certified. However, if your MHL device does not connect or work correctly, check with your MHL device FAQ or vendor directly for instructions. The policy of your device manufacturer may require you to purchase its brand-specific MHL cable or adapter in order for it to work

\* Requires optional MHL-certified mobile device and MHL cable (not included). Please check with your MHL device vendor for compatibility.

\* Standby/Off energy saving of ErP is not applicable for the MHL charging functionality

\* For a complete list of MHL-enabled products, refer to [www.mhlconsortium.org](http://www.mhlconsortium.org)

\* Response time value equal to SmartResponse