



Philips  
Curved LCD monitor with  
Ultra Wide-Color

### E Line

24 (Viewable 23.6" / 59.9 cm)  
Full HD (1920 x 1080)

248E8QSW9



## Vivid colors, crisp details

in an immersive curved design

Expand your viewing experience with this Philips Curved display. With this Full HD display you can truly immerse yourself into the game, or even give yourself needed space to spread out your work.

#### Curved design inspired by the world around us

- Curved display design for more immersive experience

#### Superb Picture Quality

- Ultra Wide-Color wider range of colors for a vivid picture
- VA display gives awesome images with wide viewing angle
- 16:9 Full HD display for crisp detailed images
- Less eye fatigue with Flicker-free technology
- SmartContrast for deep black level details
- SmartImage Lite for easy optimized image settings

#### Elegant Design

- EasySelect menu toggle key for quick on-screen menu access
- UltraSlim for a stylish look

#### Greener everyday

- Low power consumption saves energy bills
- Eco-friendly materials meet major international standards

# PHILIPS

# Highlights

## Curved display design



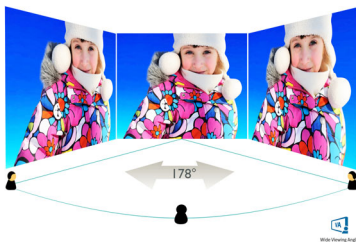
Desktop monitors offer a personal user experience, which suits a curve design very well. The curved screen provides a pleasant yet subtle immersion effect, which focuses on you at the center of your desk.

## Ultra Wide-Color Technology



Ultra Wide-Color Technology delivers a wider spectrum of colors for a more brilliant picture. Ultra Wide-Color wider "color gamut" produces more natural-looking greens, vivid reds and deeper blues. Bring media entertainment, images, and even productivity more alive and vivid colors from Ultra Wide-Color Technology.

## VA display



Philips VA LED display uses an advanced multi-domain vertical alignment technology which gives you super-high static contrast ratios for extra vivid and bright images. While standard office applications are handled with ease, it is especially suitable for photos, web-browsing, movies, gaming, and demanding graphical

applications. It's optimized pixel management technology gives you 178/178 degree extra wide viewing angle, resulting in crisp images.

## 16:9 Full HD display



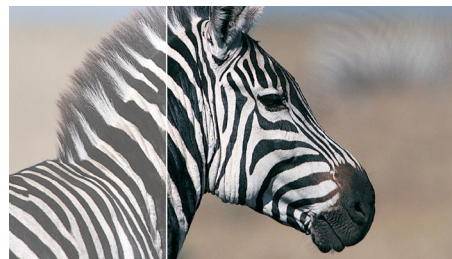
Picture quality matters. Regular displays deliver quality, but you expect more. This display features enhanced Full HD 1920 x 1080 resolution. With Full HD for crisp detail paired with high brightness, incredible contrast and realistic colors expect a true to life picture.

## Flicker-free technology



Due to the way brightness is controlled on LED-backlit screens, some users experience flicker on their screen which causes eye fatigue. Philips Flicker-free Technology applies a new solution to regulate brightness and reduce flicker for more comfortable viewing.

## SmartContrast



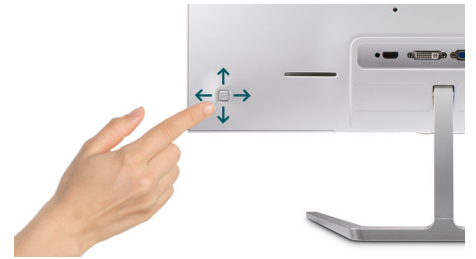
SmartContrast is a Philips technology that analyzes the contents you are displaying, automatically adjusting colors and controlling backlight intensity to dynamically enhance

contrast for the best digital images and videos or when playing games where dark hues are displayed. When Economy mode is selected, contrast is adjusted and backlighting fine-tuned for just-right display of everyday office applications and lower power consumption.

## SmartImage Lite

SmartImage Lite is an exclusive, leading edge Philips technology that analyzes the content displayed on your screen. Based on a scenario you select, SmartImage Lite dynamically enhances the contrast, color saturation and sharpness of images and videos for ultimate display performance - all in real time with the press on a single button.

## EasySelect Menu Toggle Key



The discreetly placed EasySelect Menu Toggle Key allows you to make quick and easy adjustments to monitor settings in the On-Screen Display menu.

## Eco-friendly materials

"Philips is committed to use sustainable, eco-friendly materials across its monitor range. All body plastic parts, metal chassis parts and packing materials use 100% recyclable materials. In some selected models we utilize upto 65% post consumer recycled plastics. Strict adherence to RoHS standards ensure substantial reduction or elimination of toxic substances like Lead, for example. Mercury content in monitors with CCFL backlight has been reduced significantly, while eliminated in monitors with LED backlight completely. Visit Philips @ <http://www.asimpleswitch.com/global/> to learn more.



# Specifications

## Picture/Display

- LCD panel type: VA LCD
- Backlight type: W-LED system
- Panel Size: 23.6 inch / 59.9 cm
- Effective viewing area: 521.4 (H) x 293.28 (V) - at a 1800R curvature\*
- Aspect ratio: 16:9
- Optimum resolution: 1920 x 1080 @ 60 Hz
- Response time (typical): 4 ms (Gray to Gray)\*
- Pixel Density: 93 PPI
- Brightness: 250 cd/m<sup>2</sup>
- Contrast ratio (typical): 3000:1
- SmartContrast: 20,000,000:1
- Pixel pitch: 0.272 x 0.272 mm
- Viewing angle: 178° (H) / 178° (V), @ C/R > 10
- Flicker-free
- Picture enhancement: SmartImage Lite
- Color gamut (typical): NTSC 110%\*, sRGB 99%\*
- Display colors: 16.7 M
- Scanning Frequency: 30 - 83 kHz (H) / 56 -76 Hz (V)
- sRGB

## Connectivity

- Signal Input: VGA (Analog), DVI-D (digital, HDCP)
- Sync Input: Separate Sync, Sync on Green

## Convenience

- User convenience: Power On/Off, Menu, 4:3 / Wide, Input, SmartImage lite
- OSD Languages: Brazil Portuguese, Czech, Dutch, English, Finnish, French, German, Greek, Hungarian, Italian, Japanese, Korean, Polish, Portuguese, Russian, Simplified Chinese, Spanish, Swedish, Traditional Chinese, Turkish, Ukrainian
- Other convenience: Kensington lock
- Plug & Play Compatibility: DDC/CI, Mac OS X, sRGB, Windows 10 / 8.1 / 7

## Stand

- Tilt: -5/20 degree

## Power

- On mode: 28 W (typ.)
- Standby mode: 0.5 W
- Off mode: 0.5 W
- Power LED indicator: Operation - White, Standby mode- White (blinking)
- Power supply: External, 100-240VAC, 50-60Hz

## Dimensions

- Product with stand (mm): 545 x 408 x 162 mm
- Product without stand (mm): 545 x 326 x 65 mm
- Packaging in mm (WxHxD): 599 x 461 x 127 mm

## Weight

- Product with stand (kg): 3.4 kg
- Product without stand (kg): 3.2 kg
- Product with packaging (kg): 4.5 kg

## Operating conditions

- Temperature range (operation): 0 to 40 °C
- Temperature range (storage): -20 to 60 °C
- Relative humidity: 20%-80 %
- Altitude: Operation: +12,000ft (3,658m), Non-operation: +40,000ft (12,192m)
- MTBF: 50,000 hrs (excluding backlight) hour(s)

## Sustainability

- Environmental and energy: RoHS, Lead-free, Mercury Free
- Recyclable packaging material: 100 %

## Compliance and standards

- Regulatory Approvals: CCC, CEL, WEEE, CECP

## Cabinet

- Color: White
- Finish: Glossy



Issue date 2017-11-16

Version: 1.0.1

12 NC: 8670 001 44821  
EAN: 69 51613 91237 9

© 2017 Koninklijke Philips N.V.  
All Rights reserved.

Specifications are subject to change without notice.  
Trademarks are the property of Koninklijke Philips N.V.  
or their respective owners.

[www.philips.com](http://www.philips.com)

\* Radius of the arc of the display curvature in mm  
\* Response time value equal to SmartResponse  
\* NTSC Area based on CIE1976  
\* sRGB Area based on CIE 1931