



LED-backlit LCD monitor with PowerSensor

- B Line
- 23" (58.4 cm)
- Full HD (1920 x 1080)

231B4QPYCB/27

Crisp images, efficient performance

with PowerSensor saves energy

The Philips PowerSensor LED display using 65% post consumer recycled plastics and PVC, BFR free housing is ideal for eco-friendly productivity

Benefits

Excellent performance

- IPS technology for full colors and wide viewing angles
- DisplayPort offers audio and video over a single, long cable
- Built-in stereo speakers for multimedia

Designed for people

- SmartErgoBase enables people-friendly ergonomic adjustments
- Low bezel-to-table height for maximum reading comfort

Easy to experience

- SmartImage presets for easy optimized image settings
- USB Hub with 2 ports for easy connections

Sustainable Eco-design

- PowerSensor saves up to 80% energy costs
- 65% post consumer recycled plastics with TCO Edge
- Zero power consumption with 0 watt hard switch

PHILIPS

Features

IPS technology



IPS displays use an advanced technology which gives you extra wide viewing angles of 178/178 degree, making it possible to view the display from almost any angle - even in 90 degree Pivot mode! Unlike standard TN panels, IPS displays gives you remarkably crisp images with vivid colors, making it ideal not only for Photos, movies and web browsing, but also for professional applications which demand color accuracy and consistent brightness at all times.

DisplayPort

DisplayPort is a digital link from PC to Monitor without any conversion. With higher capabilities than DVI standard, it is fully capable to support up to 15meter cables and 10.8 Gbps/sec data transfer. With this high performance and zero latency, you get the fastest imaging and refresh rates - making DisplayPort the best choice for not only general office or home use, but also for the demanding gaming and movies, video editing and more. It also keeps interoperability in mind via use of various adapters.

Built-in stereo speakers

A pair of high quality stereo speakers built into a display device. It can be visible front firing, or invisible down firing, top firing, rear firing, etc depending on model and design.

SmartErgoBase



The SmartErgoBase is a monitor base that delivers ergonomic display comfort and provides cable management. The base's people-friendly height, swivel, tilt and rotation angle adjustments position the monitor for maximum comfort that can ease the physical strains of a long workday; cable management reduces cable clutter and keeps the workspace neat and professional.

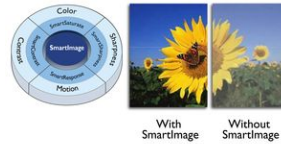
Low bezel-to-table height



The Philips monitor, thanks to its advanced SmartErgoBase, can be lowered down almost to desk level for a comfortable viewing angle. Low bezel-to-table height is the perfect solution if you use bifocals, trifocals or progressive lens glasses for your computing work. Additionally, it allows for users with greatly

different heights to use the monitor in their preferred angle and height settings, helping them reduce fatigue and strain.

SmartImage

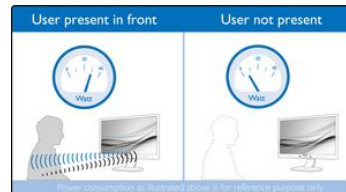


SmartImage is an exclusive leading edge Philips technology that analyzes the content displayed on your screen and gives you optimized display performance. This user friendly interface allows you to select various modes like Office, Photo, Movie, Game, Economy etc., to fit the application in use. Based on the selection, SmartImage dynamically optimizes the contrast, color saturation and sharpness of images and videos for ultimate display performance. The Economy mode option offers you major power savings. All in real time with the press of a single button!

2 Ports USB 2.0 HUB

USB Hub allows user to conveniently connect their plug and play multimedia devices such as USB memory devices, camera, portable HDD, Web camera, PDA, Printer and many other devices which has USB connection available. The conveniently located USB 2.0 Hub on the monitor allows USB 2.0 signals to pass thru to the computer. Note that many devices like cameras and HDD may need to be powered On independently, as they have higher power requirements than the monitor USB Hub can provide.

PowerSensor



PowerSensor is a built-in 'people sensor' that transmits and receives harmless infrared signals to determine if user is present and automatically reduces monitor brightness when user steps away from the desk, cutting energy costs by up to 80 percent and prolonging monitor life

TCO Edge

TCO Edge certification is given to products which go beyond existing eco-labeling programs. Over and above standard TCO requirements, it further mandates that the product uses minimum 65% of post consumer recycled plastics, is energy efficient, uses minimal hazardous materials, has 100% recyclable packaging, and is designed for easy recycling amongst other requirements. You can rest assured that this Philips monitor is a cutting edge technology product which is best in class ICT, benefitting you and the planet while helping you make a responsible green IT purchase!

Zero power consumption

At the flick of the 0 watt hard switch which is conveniently located at the back, you can completely cut-off your monitor from AC power. This results in zero power consumption reducing your carbon footprint even further

Specifications

Please note that this is a pre-sales leaflet. The contents of this leaflet reflect the best of our knowledge per date and country mentioned above. The contents of this leaflet are subject to change without notice. Philips does not accept any liability as to the contents of this leaflet.

Picture/Display

LCD panel type	IPS LCD
Backlight type	W-LED system
Panel Size	23 inch / 58.4 cm

Effective viewing area	509.18 (H) x 286.41 (V)
Aspect ratio	16:9
Optimum resolution	1920 x 1080 @ 60Hz

Response time (typical)	7 ms (GTG_BW)*
Brightness	250 cd/m ²
Contrast ratio (typical)	1000:1
SmartContrast	20,000,000:1
Pixel pitch	0.265 x 0.265 mm
Viewing angle	178° (H) / 178° (V) @ C/R > 10
Picture enhancement	SmartImage
Display colors	16.7 M
Scanning Frequency	30 - 83 kHz (H) / 56 - 75 Hz (V)
sRGB	Yes

Connectivity

Signal Input	DisplayPort DVI-D (digital, HDCP) VGA (Analog)
USB	USB 2.0 x 2
Sync Input	Separate Sync Sync on Green
Audio (In/Out)	PC audio-in Headphone out

Convenience

Built-in Speakers	1.5W x 2
User convenience	SmartImage Volume PowerSensor Menu Power On/Off
Control software	SmartControl Premium
OSD Languages	English French German Italian Portuguese Russian Simplified Chinese Spanish
Other convenience	Kensington lock VESA mount (100x100mm)
Plug & Play Compatibility	DDC/CI Mac OS X sRGB Windows 8.1 / 8 / 7

Stand

Height adjustment	110 mm
Pivot	90 degree
Swivel	-65/65 degree
Tilt	-5/20 degree

Power

ECO mode	13.7 W (typ.)
On mode	20.2 W (typ.) (EnergyStar 6.0 test method)
Standby mode	<0.3 W (typ.)
Off mode	Zero watts with AC switch
Power LED indicator	Operation - White Standby mode- White (blinking)
Power supply	100-240VAC, 50-60Hz Built-in

Dimensions

Product with stand(max height)	547 x 507 x 227 mm
Product with stand(max height)	21.5 x 20.0 x 8.9 inch

Product without stand (mm)	547 x 343 x 60 mm
Product without stand in inch	21.5 x 13.5 x 2.4 inch
Packaging in mm (WxHxD)	620 x 401 x 167 mm
Packaging in inch (WxHxD)	24.4 x 15.8 x 6.6 inch

Weight

Product with stand (kg)	5.70 kg
Product with stand (lb)	12.54 lb
Product without stand (kg)	3.90 kg
Product without stand (lb)	8.58 lb
Product with packaging (kg)	7.82 kg
Product with packaging (lb)	17.20 lb

Operating conditions

Temperature range (operation)	0°C to 40°C °C
Temperature range (storage)	-20°C to 60°C °C
Relative humidity	20%-80 %
Altitude	Operation: +12,000ft (3,658m), Non-operation: +40,000ft (12,192m)
MTBF	30,000 (backlight) hour(s)

Sustainability

Environmental and energy	PowerSensor EnergyStar 6.0 EPEAT Gold* TCO edge RoHS
Recyclable packaging material	100 %
Post consumer recycled plastic	65%
Specific Substances	PVC / BFR free housing Mercury free Lead free

Compliance and standards

Regulatory Approvals	BSMI CE Mark cETLus FCC Class B GOST SASO SEMKO TCO 6.0 TUV Ergo TUV/GS WEEE
----------------------	------------------------------------------------------------------------------------------------------------

Cabinet

Front bezel	Black
Rear cover	Black
Foot	Black
Finish	Texture

- * EPEAT Gold is valid only where Philips registers the product. Please visit www.epeat.net for registration status in your country.
- * "IPS" word mark / trademark and related patents on technologies belong to their respective owners.
- * Response time value equal to SmartResponse



data subject to change
2018, March 25

Version: 3.0.1
UPC: 609585244320

© 2018 Koninklijke Philips N.V.
All rights reserved.

Specifications are subject to change without notice. Trademarks are the property of Koninklijke Philips N.V. or their respective owners.

www.philips.com