



Philips  
LCD monitor with  
SoftBlue Technology

### S Line

22 (21.5" / 54.6 cm diag.)  
Full HD (1920 x 1080)

223S7EYMB



## Reliable and essential features

that drive business efficiency

Our S Line monitor delivers business efficiency. A wide-view IPS display with SoftBlue technology is great for easy-on-the-eyes productivity. The height-adjustable, frameless display allows for tiling multiple monitors for an expanded view.

#### Brilliant performance

- 16:9 Full HD display for crisp detailed images
- IPS technology for full colors and wide viewing angles
- Narrow border display for seamless appearance
- SmartImage presets for easy optimized image settings

#### Designed for comfortable productivity

- SoftBlue Technology easy on the eyes and maintains color
- EasyRead mode for a paper-like reading experience
- LowBlue Mode for easy on-the-eyes productivity
- Less eye fatigue with Flicker-free technology
- SmartErgoBase enables people-friendly ergonomic adjustments
- Low bezel-to-table height for maximum reading comfort

#### Features for the way you work

- DisplayPort connection for maximum visuals
- Built-in stereo speakers for multimedia

# PHILIPS

# Highlights

## 16:9 Full HD display



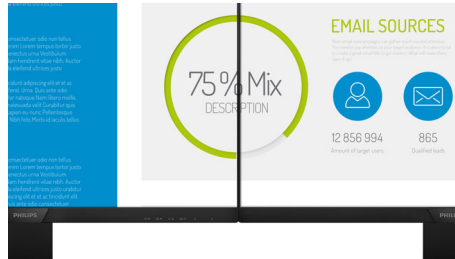
Picture quality matters. Regular displays deliver quality, but you expect more. This display features enhanced Full HD 1920 x 1080 resolution. With Full HD for crisp detail paired with high brightness, incredible contrast and realistic colors expect a true to life picture.

## IPS technology



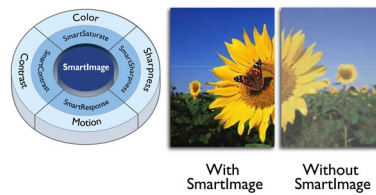
IPS displays use an advanced technology which gives you extra wide viewing angles of 178/178 degree, making it possible to view the display from almost any angle - even in 90 degree Pivot mode! Unlike standard TN panels, IPS displays gives you remarkably crisp images with vivid colors, making it ideal not only for Photos, movies and web browsing, but also for professional applications which demand color accuracy and consistent brightness at all times.

## UltraNarrow Border



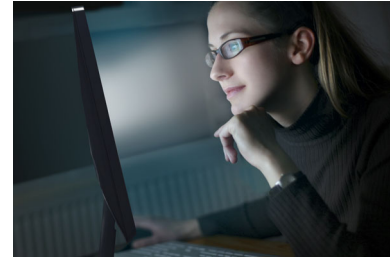
The new Philips displays feature ultra-narrow borders which allow for minimal distractions and maximum viewing size. Especially suited for multi-display or tiling setup like gaming, graphic design and professional applications, the ultra-narrow border display gives you the feeling of using one large display.

## SmartImage



SmartImage is an exclusive leading edge Philips technology that analyzes the content displayed on your screen and gives you optimized display performance. This user friendly interface allows you to select various modes like Office, Photo, Movie, Game, Economy etc., to fit the application in use. Based on the selection, SmartImage dynamically optimizes the contrast, color saturation and sharpness of images and videos for ultimate display performance. The Economy mode option offers you major power savings. All in real time with the press of a single button!

## SoftBlue Technology



SoftBlue LED technology uses a smart technology to reduce harmful shortwave blue light without affecting the color or image of the display. SoftBlue LED technology is certified by international testing organizations TUV Rheinland to reduce harmful blue light.

## EasyRead mode



EasyRead mode for a paper-like reading experience

## LowBlue Mode



Studies have shown that just as ultra-violet rays can cause eye damage, shortwave length blue light rays from LED displays can cause eye damage and affect vision over time. Developed for wellbeing, Philips LowBlue Mode setting uses a smart software technology to reduce harmful shortwave blue light.



# Specifications

## Picture/Display

- LCD panel type: IPS technology
- Backlight type: W-LED system
- Panel Size: 21.5 inch / 54.6 cm
- Effective viewing area: 476.1 (H) x 267.8 (V)
- Aspect ratio: 16:9
- Optimum resolution: 1920 x 1080 @ 60Hz
- Response time (typical): 5 ms (Gray to Gray)\*
- Pixel Density: 102 PPI
- Brightness: 250 cd/m<sup>2</sup>
- Contrast ratio (typical): 1,000:1
- SmartContrast: 20,000,000 :1
- Pixel pitch: 0.248 x 0.248 mm
- Viewing angle: 178° (H) / 178° (V), @ C/R > 10
- Picture enhancement: SmartImage
- Display colors: 16.7 M
- Scanning Frequency: 30 - 83 kHz (H) / 56 - 76 Hz (V)
- SoftBlue
- Flicker-free
- sRGB
- LowBlue Mode
- EasyRead

## Connectivity

- Signal Input: VGA (Analog), DisplayPort 1.2
- Sync Input: Separate Sync, Sync on Green
- Audio (In/Out): PC audio-in, Headphone out

## Convenience

- Built-in Speakers: 2 W x 2
- User convenience: SmartImage, Input, Volume, Menu, Power On/Off
- Control software: SmartControl
- OSD Languages: Brazil Portuguese, Czech, Dutch, English, Finnish, French, German, Greek, Hungarian, Italian, Japanese, Korean, Polish, Portuguese, Russian, Simplified Chinese, Spanish, Swedish, Traditional Chinese, Turkish, Ukrainian
- Other convenience: Kensington lock, VESA mount (100x100mm)
- Plug & Play Compatibility: DDC/CI, Mac OS X, sRGB, Windows 10 / 8.1 / 8 / 7

## Stand

- Height adjustment: 130 mm
- Pivot: 90 degree
- Swivel: -175/+175 degree
- Tilt: -5/25 degree

## Power

- ECO mode: 10 W (typ.)

- On mode: 12.5 W (typ.) (EnergyStar 7.0 test method)
- Standby mode: < 0.5 W (typ.)
- Off mode: <0.3 W (typ.)
- Power LED indicator: Operation - White, Standby mode- White (blinking)
- Power supply: 100-240VAC, 50-60Hz, Built-in

## Dimensions

- Product with stand (mm): 490 x 455 x 202 mm
- Product with stand in inch: 19.3 x 17.9 x 8.0 inch
- Product without stand (mm): 490 x 296 x 45 mm
- Product without stand in inch: 19.3 x 11.7 x 1.8 inch
- Packaging in mm (WxHxD): 552 x 420 x 194 mm
- Packaging in inch (WxHxD): 21.7 x 16.5 x 7.6 inch

## Weight

- Product with stand (kg): 4.51 kg
- Product with stand (lb): 9.92 lb
- Product without stand (kg): 2.63 kg
- Product without stand (lb): 5.79 lb
- Product with packaging (kg): 6.56 kg
- Product with packaging (lb): 14.43 lb

## Operating conditions

- Temperature range (operation): 0°C to 40°C °C
- Temperature range (storage): -20°C to 60°C °C
- Relative humidity: 20%-80 %
- Altitude: Operation: +12,000ft (3,658m), Non-operation: +40,000ft (12,192m)
- MTBF (demonstrated): 70,000 hrs (excluded backlight)

## Sustainability

- Environmental and energy: EnergyStar 7.0, EPEAT Gold\*, RoHS
- Recyclable packaging material: 100 %
- Specific Substances: PVC / BFR free housing, Mercury free, Lead free

## Compliance and standards

- Regulatory Approvals: CE Mark, FCC Class B, SEMKO, cETLus, CU-EAC, TCO certified, EPA, WEEE, UKRAINIAN, ICES-003, TUV/ISO9241-307, PSB, TUV Cert. - blue light cut-off

## Cabinet

- Front bezel: Black
- Rear cover: Black
- Foot: Black
- Finish: Texture



Issue date 2018-05-28

Version: 6.0.1

12 NC: 8670 001 43967  
UPC: 6 09585 25085 7

© 2018 Koninklijke Philips N.V.  
All Rights reserved.

Specifications are subject to change without notice.  
Trademarks are the property of Koninklijke Philips N.V.  
or their respective owners.

[www.philips.com](http://www.philips.com)

\* "IPS" word mark / trademark and related patents on technologies belong to their respective owners.  
\* Response time value equal to SmartResponse  
\* EPEAT Gold is valid only where Philips registers the product. Please visit [www.epeat.net](http://www.epeat.net) for registration status in your country.