

Philips Brilliance
USB-docking LCD monitor

B Line

24 (23.8"/60.5 cm diag.)
1920 x 1080 (Full HD)

Brilliance



241B7QUPEB

Simplicity with notebook docking display

expand view with single cable

This innovative notebook docking display with multimedia enables easy port replication. Expand your viewing workspace, keep peripherals connected and access the Internet, all with a single SuperSpeed USB cable.

Simplicity makes sense

- Connect to the Internet and intranet with the built in Ethernet port
- Single USB 3.0 cable docks your notebook to the display
- Transmit video and audio from the notebook with a single cable
- True plug and play for hassle-free dual display setup
- Access all peripherals, keyboard and mouse from the hub

Excellent performance

- IPS technology for full colours and wide viewing angles
- Less eye fatigue with Flicker-Free technology
- SmartImage pre-sets for easy optimised image settings
- LowBlue Mode for easy-on-the-eyes productivity

Designed for people

- Narrow border display for seamless appearance
- Built-in stereo speakers for multimedia
- SmartErgoBase enables user-friendly ergonomic adjustments

PHILIPS

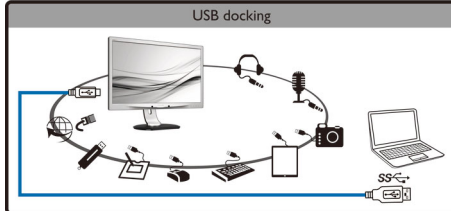
Highlights

Expand view with single cable



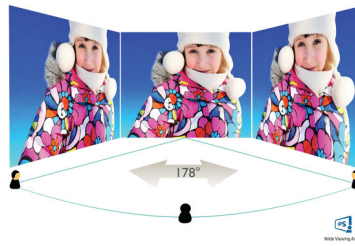
This innovative large Philips display enables easy port replication for any notebook. Particularly suitable for the latest Ultra book type devices with limited connectors, this display with built-in USB 3.0 hub, Ethernet and stereo speakers enables you to transmit video, audio and connect to Internet or intranet directly, using a single cable USB connection. With this advanced USB 3.0 or USB 2.0 plug and play connection, you can now expand your desktop using both your NBPC and Philips display's real-estate without having to worry about cumbersome resolution adjustments or mess around with cables.

USB hub for peripherals



You now have the option to connect a full sized keyboard and mouse to the Philips display's USB hub to improve your productivity. Simply connect your Notebook to this display with a single USB cable, and you are ready to utilise the additional peripherals such as the external HDD, camera, USB drive along with Full HD video, Audio and Internet functions. Should you prefer, you can of course still utilise your NBPC's keyboard and track pad as usual.

IPS technology



IPS displays use advanced technology that gives you extra-wide viewing angles of 178/178 degrees, making it possible to view the display from almost any angle — even in 90-degree Pivot mode! Unlike standard TN panels, IPS displays gives you remarkably crisp images with vivid colours, making it ideal not only for Photos, films and web browsing, but also for professional applications that demand colour accuracy and consistent brightness at all times.

Flicker-Free technology



Due to the way brightness is controlled on LED-backlit screens, some users experience flicker on their screen which causes eye fatigue. Philips Flicker-Free technology applies a new solution to regulate brightness and reduce flicker for more comfortable viewing.

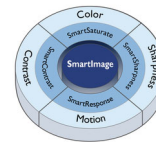
Ultra-narrow Border



The new Philips displays feature ultra-narrow borders which allow for minimal distractions

and maximum viewing size. Especially suited for multi-display or tiling setups like gaming, graphic design and professional applications, the ultra-narrow border display gives you the feeling of using one large display.

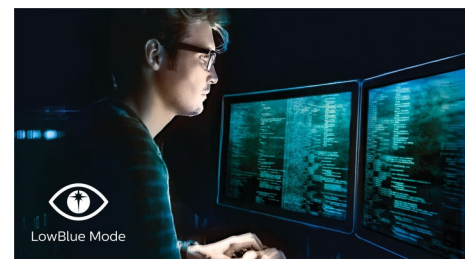
SmartImage



With SmartImage Without SmartImage

SmartImage is an exclusive leading edge Philips technology that analyses the content displayed on your screen and optimises your display performance. This user-friendly interface allows you to select various modes, like Office, Photo, Movie, Game, Economy etc., to fit the application in use. Based on the selection, SmartImage dynamically optimises the contrast, colour saturation and sharpness of images and videos for ultimate display performance. The Economy mode option offers you major power savings. All in real time at the touch of a single button!

LowBlue Mode



Studies have shown that just as ultra-violet rays can cause eye damage, shortwave-length blue light rays from LED displays can cause eye damage and affect vision over time. Developed for wellbeing, the Philips LowBlue Mode setting uses a smart software technology to reduce harmful shortwave blue light.



Specifications

Picture/Display

- LCD panel type: IPS technology
- Backlight type: W-LED system
- Panel Size: 23.8 inch/60.5 cm
- Effective viewing area: 527 x 296.5 mm
- Aspect ratio: 16:9
- Optimum resolution: 1920 x 1080 @ 60 Hz
- Pixel Density: 93 PPI
- Response time (typical): 5 ms (Grey to Grey)*
- Brightness: 250 cd/m²
- Contrast ratio (typical): 1000:1
- SmartContrast: 20,000,000:1
- Pixel pitch: 0.275 x 0.275 mm
- Viewing angle: 178° (H)/178° (V), @ C/R > 10
- Flicker-free
- Picture enhancement: SmartImage
- Display colours: 16.7 M
- Scanning Frequency: 30–83 kHz (H)/56–75 Hz (V)
- sRGB
- LowBlue Mode

Connectivity

- Signal Input: VGA (Analogue), USB 3.0 upstream
- Sync Input: Separate Sync, Sync on Green

USB Connectivity

- USB: USB 3.0 x 3
- Signal Input: USB 3.0 upstream
- Audio In/Out: through USB
- RJ45: through USB
- Microphone in: through USB
- Headphone out: through USB

Convenience

- Built-in Speakers: 2 W x 2
- User convenience: SmartImage, Input, PowerSensor, Menu, Power On/Off
- Control software: SmartControl
- OSD Languages: English, French, German, Italian, Portuguese, Russian, Simplified Chinese, Spanish, Korean, Brazil Portuguese, Czech, Dutch, Finnish, Greek, Hungarian, Japanese, Polish, Swedish, Traditional Chinese, Turkish, Ukrainian
- Other convenience: Kensington lock, VESA mount (100 x 100 mm)
- Plug and Play Compatibility: DDC/CI (VGA only), Mac OS X, sRGB, Windows 10 / 8.1 / 8 / 7

Stand

- Height adjustment: 150 mm
- Pivot: 90 degree
- Swivel: -175/175 degree
- Tilt: -5/30 degree

Power

- ECO mode: 11.1 W (typ.)
- Energy Label Class: D
- On mode: 13.14 W (typ.) (EnergyStar test method)
- Standby mode: <0.3 W (typ.)
- Off mode: Zero watts with AC switch
- Power LED indicator: Operation - White, Standby mode - White (flashing)
- Power supply: 100–240 VAC, 50–60 Hz, Built-in

Dimensions

- Product with stand (max height): 541 x 527 x 257 mm
- Product without stand (mm): 541 x 332 x 57 mm
- Packaging in mm (W x H x D): 603 x 492 x 224 mm

Weight

- Product with stand (kg): 5.95 kg
- Product without stand (kg): 3.52 kg
- Product with packaging (kg): 8.33 kg

Operating conditions

- Temperature range (operation): 0°C to 40°C °C
- Temperature range (storage): -20°C to 60°C °C
- Relative humidity: 20%-80 %
- Altitude: Operation: +12,000 ft (3658 m), Non-operation: +40,000 ft (12,192 m)
- MTBF (demonstrated): 70,000 hrs (excluded backlight)

Sustainability

- Environmental and energy: EnergyStar 8.0, PowerSensor, EPEAT*, TCO Certified Edge, RoHS
- Recyclable packaging material: 100 %
- Post-consumer recycled plastic: 85%
- Specific Substances: PVC/BFR free housing, Mercury free

Compliance and standards

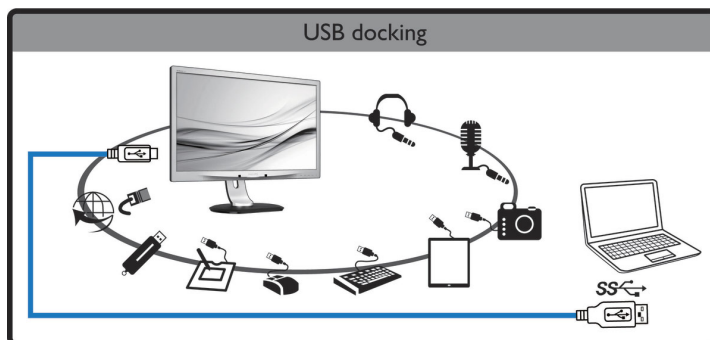
- Regulatory Approvals: CE Mark, FCC Class B, SEMKO, cETLus, CU-EAC, TUV Ergo, TUV/GS, EPA, WEEE, UKRAINIAN, ICES-003, SASO, KUCAS

Cabinet

- Front bezel: Black
- Rear cover: Black
- Foot: Black
- Finish: Texture

What's in the box?

- Monitor with stand
- Cables: D-Sub cable, USB cable, Power cable
- User Documentation



Issue date 2022-05-18

Version: 5.0.1

12 NC: 8670 001 42296
EAN: 87 12581 74353 6

© 2022 Koninklijke Philips N.V.
All Rights reserved.

Specifications are subject to change without notice.
Trademarks are the property of Koninklijke Philips N.V.
or their respective owners.

www.philips.com

* We recommend you use a USB 3.0 connection between your Notebook PC and the Philips display to ensure smooth images, video and audio.

* Activities such as screen sharing and online streaming over the Internet can impact your network performance. Your hardware and network bandwidth will determine the overall audio and video quality.

* The notebook, keyboard and mouse shown are for illustration purpose only and not included with the product.

* "IPS" word mark / trademark and related patents on technologies belong to their respective owners.

* EPEAT rating is valid only where Philips registers the product. Please visit <https://www.epeat.net/> for registration status in your country.

* Response time value equal to SmartResponse