



Philips Brilliance
LCD monitor with
PowerSensor

B Line
24" (61 cm)
1920 x 1200 (WUXGA)

Brilliance

240B4QPYEB



Sustainable eco design display

with PowerSensor saves energy bills

The Philips PowerSensor LED display using 25% recycled materials and PVC, BFR-free housing is ideal for eco-friendly productivity

Sustainable Eco-design

- PowerSensor saves up to 80% energy costs
- Zero power consumption with 0 watt hard switch
- PVC-BFR free housing

Excellent performance

- IPS technology for full colours and wide viewing angles
- DisplayPort delivers high bandwidth for ultra-fine images
- Built-in stereo speakers for multimedia

Designed for people

- SmartErgoBase enables user-friendly ergonomic adjustments
- Low bezel-to-table height for maximum reading comfort

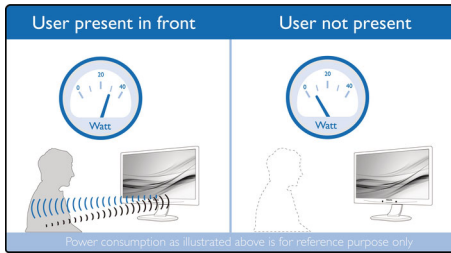
Easy to experience

- SmartImage pre-sets for easy optimised image settings
- USB Hub with 2 ports for easy connections

PHILIPS

Highlights

PowerSensor



PowerSensor is a built-in 'people sensor' that transmits and receives harmless infrared signals to determine if the user is present and then automatically reduces monitor brightness when the user steps away from the desk, cutting energy costs by up to 80 percent and prolonging monitor life

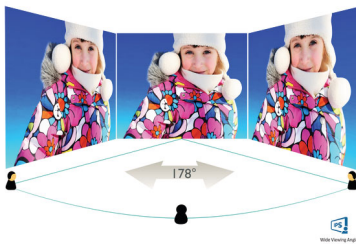
Zero power consumption

At the flick of the 0 watt hard switch, which is conveniently located at the back of the monitor, you can completely cut off your monitor from AC power. This results in zero power consumption, reducing your carbon footprint even further

PVC-BFR free housing

This Philips monitor housing is free from brominated flame retardant and polyvinyl chloride (PVC-BFR free)

IPS technology



IPS displays use advanced technology that gives you extra-wide viewing angles of 178/178 degrees, making it possible to view the display from almost any angle — even in 90-degree Pivot mode! Unlike standard TN panels, IPS displays give you remarkably crisp images with vivid colours, making it ideal not only for Photos, films and web browsing, but also for professional applications that demand colour accuracy and consistent brightness at all times.

DisplayPort

DisplayPort is a digital link from PC to monitor without any conversion. With higher capabilities than DVI standard, it is fully capable to support up to 15 metre cables and 10.8 Gbps/sec data transfer. With this high performance and zero latency, you get the fastest imaging and refresh rates — making DisplayPort the best choice for not only general office or home use, but also for the more demanding gaming and films, video editing and more. It also keeps interoperability in mind via the use of various adapters.

Built-in stereo speakers

A pair of high-quality stereo speakers built into a display device. They may be visible front firing, or invisible down firing, top firing, rear firing etc. depending on model and design.

SmartErgoBase



The SmartErgoBase is a monitor base that delivers ergonomic display comfort and provides cable management. The user-friendly height, swivel, tilt and rotation angle adjustments of the base allow the monitor to be positioned for maximum comfort to help ease the physical strains of a long workday. In addition, cable management reduces cable clutter and keeps the workspace neat and professional.

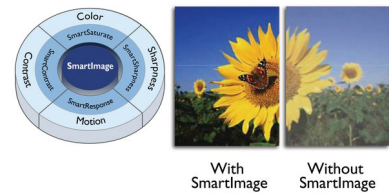
Low bezel-to-table height



Thanks to its advanced SmartErgoBase, the Philips monitor can be lowered down almost

to desk level for a comfortable viewing angle. Low bezel-to-table height is the perfect solution if you use bifocals, trifocals or progressive lens glasses for your computing work. Additionally, it allows users of different heights to use the monitor at their preferred angle and height settings, helping them to reduce fatigue and strain.

SmartImage



SmartImage is an exclusive leading edge Philips technology that analyses the content displayed on your screen and optimises your display performance. This user-friendly interface allows you to select various modes, like Office, Photo, Movie, Game, Economy etc., to fit the application in use. Based on the selection, SmartImage dynamically optimises the contrast, colour saturation and sharpness of images and videos for ultimate display performance. The Economy mode option offers you major power savings. All in real time at the touch of a single button!

2 Ports USB 2.0 HUB

USB Hub allows user to conveniently connect their plug and play multimedia devices such as USB memory devices, camera, portable HDD, Web camera, PDA, Printer and many other devices which have USB connection available. The conveniently located USB 2.0 Hub on the monitor allows USB 2.0 signals to pass through to the computer. Note that many devices like cameras and HDD may need to be powered On independently, as they have higher power requirements than the monitor USB Hub can provide.



Specifications

Picture/Display

- LCD panel type: IPS technology
- Backlight type: W-LED system
- Panel Size: 24 inch/61 cm
- Effective viewing area: 518.4 (H) x 324 (V)
- Display Screen Coating: Anti-Glare, 3H, Haze 25%
- Aspect ratio: 16:10
- Optimum resolution: 1920 x 1200 @ 60 Hz
- Response time (typical): 5 ms (Grey to Grey)*
- Brightness: 250 cd/m²
- Contrast ratio (typical): 1000:1
- SmartContrast: 20,000,000:1
- Pixel pitch: 0.270 x 0.270 mm
- Viewing angle: 178° (H)/178° (V), @ C/R > 10
- Picture enhancement: SmartImage
- Display colours: 16.7 M
- Scanning Frequency: 30 - 83 kHz (H) / 56 - 76 Hz (V)
- sRGB

Connectivity

- Signal Input: DisplayPort 1.2, DVI-D (digital, HDCP), VGA (Analogue)
- USB: USB 2.0 x 2
- Sync Input: Separate Sync, Sync on Green
- Audio (In/Out): PC audio-in, Headphone out

Convenience

- Built-in Speakers: 1.5 W x 2 (above)
- User convenience: SmartImage, Volume, PowerSensor, Menu, Power On/Off
- Control software: PowerSensor, SmartControl
- OSD Languages: Brazil Portuguese, Czech, Dutch, English, Finnish, French, German, Greek, Hungarian, Italian, Japanese, Korean, Polish, Portuguese, Russian, Simplified Chinese, Spanish, Swedish, Traditional Chinese, Turkish, Ukrainian
- Other convenience: Kensington lock, VESA mount (100 x 100 mm)
- Plug and Play Compatibility: DDC/CI, Mac OS X, sRGB, Windows 7, Windows 8

Stand

- Height adjustment: 130 mm
- Pivot: 90 degree
- Swivel: -65/65 degree
- Tilt: -5/20 degree

Power

- ECO mode: 12.3 W (typ.)

- On mode: 18.3 W (typ.) (EnergyStar 7.0 test method)
- Standby mode: < 0.3 W (typ.)
- Off mode: Zero watts with Zero switch
- Power LED indicator: Operation - White, Standby mode - White (flashing)
- Power supply: Built-in, 100–240 VAC, 50–60 Hz

Dimensions

- Product with stand (max height): 555 x 550 x 244 mm
- Product without stand (mm): 555 x 388 x 65 mm
- Packaging in mm (W x H x D): 632 x 457 x 286 mm

Weight

- Product with stand (kg): 6.90 kg
- Product without stand (kg): 4.57 kg
- Product with packaging (kg): 9.49 kg

Operating conditions

- Temperature range (operation): 0°C to 40°C °C
- Temperature range (storage): -20°C to 60°C °C
- Relative humidity: 20%-80 %
- Altitude: Operation: +12,000 ft (3658 m), Non-operation: +40,000 ft (12,192 m)
- MTBF: 40,000 hour(s)

Sustainability

- Environmental and energy: EnergyStar 7.0, TCO Certified, PowerSensor, RoHS
- Recyclable packaging material: 100 %
- Recycled material: 25%
- Specific Substances: PVC/BFR free housing, Mercury free, Lead free

Compliance and standards

- Regulatory Approvals: BSMI, CE Mark, cETLus, FCC Class B, GOST, SEMKO, TUV Ergo, TUV/GS, WEEE

Cabinet

- Front bezel: Black
- Rear cover: Black
- Foot: Black
- Finish: Texture

What's in the box?

- Monitor with stand
- Cables: VGA, DVI, Audio, Power
- User Documentation



Issue date 2020-04-26

Version: 4.0.1

12 NC: 8670 001 42674
EAN: 87 12581 74399 4

© 2020 Koninklijke Philips N.V.
All Rights reserved.

Specifications are subject to change without notice.
Trademarks are the property of Koninklijke Philips N.V.
or their respective owners.

www.philips.com

* "IPS" word mark / trademark and related patents on technologies belong to their respective owners.
* Response time value equal to SmartResponse