



LCD monitor with SoftBlue Technology

- E Line
- 22 (21.5"/54.6 cm diag.)
- Full HD (1920 x 1080)

227E6EDSD/01

SoftBlue Technology

developed for the wellbeing of your eyes

Designed for you: The elegant new Philips E-line monitor features new SoftBlue Technology for easy-on-the-eyes, brilliantly coloured images.

Benefits

Superb Picture Quality

- SoftBlue Technology is easy on the eyes and maintains colour
- IPS-ADS wide-view technology for image and colour accuracy
- 16:9 Full HD display for crisp, detailed images
- SmartImage Lite for easy optimised image settings
- SmartControl Lite: For quick and easy display tuning
- SmartContrast for deep black level details

Elegant Design

- Elegant, slim design complements your home decor

- Modern Touch controls complement the design
- Superb glossy finish enhances your home decoration

Experience immersive multimedia

- MHL technology for enjoying mobile content on a big screen

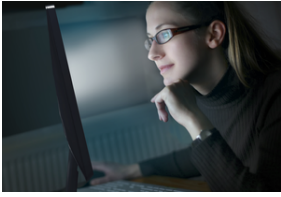
Greener every day

- Low power consumption saves energy bills

PHILIPS

Features

SoftBlue Technology



SoftBlue LED technology uses smart technology to reduce harmful shortwave blue light without affecting the colour or image of the display. SoftBlue LED technology is certified by international testing organisation TUV Rheinland to reduce harmful blue light.

IPS-ADS technology



IPS-ADS displays use an advanced technology that gives you extra-wide viewing angles of 178/178 degrees, making it possible to view the display from almost any angle. Unlike standard TN panels, IPS-ADS displays give you remarkably crisp images with vivid colours, making them ideal not only for Photos, movies and web browsing, but also for professional applications that demand colour accuracy and consistent brightness at all times.

16:9 Full HD display



The Full HD screen has the widescreen resolution of 1920 x 1080p. This is the highest resolution of HD sources for the best possible picture quality. It is fully future-proof as it supports 1080p signals from all sources, including the most recent sources such as Blu-ray and advanced HD game consoles. The signal processing is extensively upgraded to support this much higher signal quality and resolution. It produces brilliant flicker-free progressive scan pictures with superb brightness and colours.

SmartImage Lite

SmartImage Lite is an exclusive, leading edge Philips technology that analyses the content displayed on your screen. Based on a scenario you select, SmartImage Lite dynamically enhances the contrast, colour saturation and sharpness of images and videos for ultimate display performance - all in real time with the press of a single button.

SmartControl Lite

SmartControl Lite is the next generation 3D icon-based GUI monitor control software. This allows the user to fine-tune most parameters of the monitor like Colour, Brightness, screen calibration, Multimedia, ID management etc. with the mouse.

Specifications

Please note that this is a pre-sales leaflet. The contents of this leaflet reflect the best of our knowledge per date and country mentioned above. The contents of this leaflet are subject to change without notice. Philips does not accept any liability as to the contents of this leaflet.

Picture/Display

LCD panel type	IPS-ADS LCD
Backlight type	W-LED system

SmartContrast



SmartContrast is a Philips technology that analyses the contents you are displaying, automatically adjusting colours and controlling backlight intensity to dynamically enhance contrast for the best digital images and videos or when playing games where dark hues are displayed. When Economy mode is selected, contrast is adjusted and backlighting fine-tuned for just-right display of everyday office applications and lower power consumption.

Modern Touch controls



Touch controls are intelligent, touch-sensitive icons that replace protruding buttons to allow users to adjust the monitor to their requirements. Responding to the lightest touch, Touch control gives the monitor a modern feel.

MHL technology



Mobile High-Definition Link (MHL) is a mobile audio/video interface for directly connecting mobile phones and other portable devices to high-definition displays. An optional MHL cable allows you to simply connect your MHL-capable mobile device to this large Philips MHL display and watch your HD videos come to life with full digital sound. Now not only can you enjoy your mobile games, photos, movies or other apps on its big screen, you can simultaneously charge your mobile device so you never run out of power halfway.

Low power consumption

Panel Size	21.5 inch/54.6 cm
Effective viewing area	476.6 (H) x 268.1 (V)
Aspect ratio	16:9

data subject to change
2018, July 12

Optimum resolution	1920 x 1080 @ 60 Hz
Response time (typical)	5 ms (Grey to Grey)*
Brightness	250 cd/m ²
Contrast ratio (typical)	1000:1
SmartContrast	20,000,000:1
Pixel pitch	0.248 x 0.248 mm
Viewing angle	178° (H)/178° (V) @ C/R > 10
Picture enhancement	SmartImage Lite
Display colours	16.7 M
Scanning Frequency	30–83 kHz (H)/56–75 Hz (V)
MHL	1080P @ 60 Hz
sRGB	Yes
SoftBlue	Yes
Connectivity	
Signal Input	VGA (Analogue) DVI-D (digital, HDCP) MHL-HDMI (digital, HDCP)
Sync Input	Separate Sync Sync on Green
Audio (In/Out)	HDMI audio out
Convenience	
User convenience	Power On/Off Menu 4:3/Wide Input SmartImage Lite
OSD Languages	Brazil Portuguese Czech Dutch English Finnish French German Greek Hungarian Italian Japanese Korean Polish Portuguese Russian Simplified Chinese Spanish Swedish Traditional Chinese Turkish Ukrainian
Other convenience	Kensington lock
Plug and Play	DDC/CI
Compatibility	Mac OS X sRGB Windows 7 Windows 8
Stand	
Tilt	-5/20 degree
Power	
On mode	15.52 W (typ.) (EnergyStar 6.0 test method)
Standby mode	0.5 W (typ.)

Off mode	0.3 W (typ.)
Power LED indicator	Operation - White Standby mode - White (flashing)
Power supply	External 100-240 VAC, 50-60 Hz

Dimensions

Product with stand (mm)	511 x 400 x 212 mm
Product without stand (mm)	511 x 318 x 36 mm
Packaging in mm (W x H x D)	562 x 466 x 106 mm

Weight

Product with stand (kg)	2.95 kg
Product without stand (kg)	2.58 kg
Product with packaging (kg)	4.50 kg

Operating conditions

Temperature range (operation)	0°C to 40°C °C
Temperature range (storage)	-20°C to 60°C °C
Relative humidity	20%–80% %
Altitude	Operation: +12,000 ft (3658 m), Non-operation: +40,000 ft (12,192 m)
MTBF	30,000 hour(s)

Sustainability

Environmental and energy	EnergyStar 6.0 EPEAT Silver RoHS Lead-free Mercury Free
Recyclable packaging material	100 %

Compliance and standards

Regulatory Approvals	BSMI CCC CE Mark cETLus FCC Class B GOST SASO SEMKO TCO 6.0 TUV/ISO9241-307 WEEE
----------------------	--

Cabinet

Colour	BlackCherry
Finish	Glossy

What's in the box?

Monitor with stand	Yes
Cables	D-Sub cable, Power cable
User Documentation	Yes

- * This Philips display is MHL-certified. However, if your MHL device does not connect or work correctly, check with your MHL device FAQ or vendor directly for instructions. The policy of your device manufacturer may require you to purchase its brand-specific MHL cable or adapter in order for it to work
- * Requires optional MHL-certified mobile device and MHL cable (not included). Please check with your MHL device vendor for compatibility.
- * Standby/Off energy saving of ErP is not applicable for the MHL charging functionality
- * For a complete list of MHL-enabled products, refer to www.mhlconsortium.org
- * "IPS" word mark / trademark and related patents on technologies belong to their respective owners.
- * Response time value equal to SmartResponse



data subject to change
2018, July 12

Version: 2.0.1
EAN: 8712581743949

© 2018 Koninklijke Philips N.V.
All rights reserved.

Specifications are subject to change without notice. Trademarks are the property of Koninklijke Philips N.V. or their respective owners.

www.philips.com