



LCD monitor with PowerSensor

- B Line
- 22 (21.5"/54.6 cm diag.)
- Full HD (1920 x 1080)

221B6LPCB/01

## Crisp images, efficient performance

with PowerSensor saves energy

The Philips PowerSensor LED display using 85% post consumer recycled plastics and PVC, BFR-free housing is ideal for eco-friendly productivity

### Benefits

#### Excellent performance

- LED technology ensures natural colours
- Less eye fatigue with Flicker-Free technology
- SmartImage pre-sets for easy optimised image settings
- SmartContrast 20,000,000:1 for incredible rich black details

#### Designed for people

- SmartErgoBase enables user-friendly ergonomic adjustments
- Low bezel-to-table height for maximum reading comfort

#### Easy to experience

- Built-in stereo speakers for multimedia
- USB Hub with four ports for easy connections

#### Sustainable Eco-design

- PowerSensor saves up to 80% energy costs
- 85% post consumer recycled plastics with TCO Edge

### Features

#### LED technology

White LED's are solid state devices which light up to full, consistent brightness faster saving startup time. LED's are free from mercury content, which allows for eco-friendly recycling and disposal process. LED's allow for better dimming

# PHILIPS

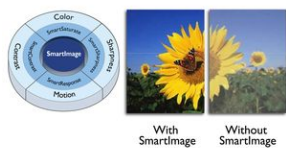
control of the LCD backlight, resulting in a super high contrast ratio. It also gives superior colour reproduction thanks to consistent brightness across the screen.

### Flicker-Free technology



Due to the way brightness is controlled on LED-backlit screens, some users experience flicker on their screen which causes eye fatigue. Philips Flicker-Free technology applies a new solution to regulate brightness and reduce flicker for more comfortable viewing.

### SmartImage



SmartImage is an exclusive leading edge Philips technology that analyses the content displayed on your screen and optimises your display performance. This user-friendly interface allows you to select various modes, like Office, Photo, Movie, Game, Economy etc., to fit the application in use. Based on the selection, SmartImage dynamically optimises the contrast, colour saturation and sharpness of images and videos for ultimate display performance. The Economy mode option offers you major power savings. All in real time at the touch of a single button!

### SmartContrast ratio 20,000,000:1



You want the LCD flat display with the highest contrast and most vibrant images. Philips advanced video processing combined with unique extreme dimming and backlight-boosting technology results in vibrant images. SmartContrast will increase the contrast with excellent black level and accurate rendition of dark shades and colours. It gives a bright, lifelike picture with high contrast and vibrant colours.

### SmartErgoBase



The SmartErgoBase is a monitor base that delivers ergonomic display comfort and provides cable management. The user-friendly height, swivel, tilt and

## Specifications

Please note that this is a pre-sales leaflet. The contents of this leaflet reflect the best of our knowledge per date and country mentioned above. The contents of this leaflet are subject to change without notice. Philips does not accept any liability as to the contents of this leaflet.

### Picture/Display

LCD panel type	TFT-LCD
Backlight type	W-LED system
Panel Size	21.5 inch/54.6 cm
Effective viewing area	476.64 (H) x 268.11 (V)

rotation angle adjustments of the base allow the monitor to be positioned for maximum comfort to help ease the physical strains of a long workday. In addition, cable management reduces cable clutter and keeps the workspace neat and professional.

### Low bezel-to-table height



Thanks to its advanced SmartErgoBase, the Philips monitor can be lowered down almost to desk level for a comfortable viewing angle. Low bezel-to-table height is the perfect solution if you use bifocals, trifocals or progressive lens glasses for your computing work. Additionally, it allows users of different heights to use the monitor at their preferred angle and height settings, helping them to reduce fatigue and strain.

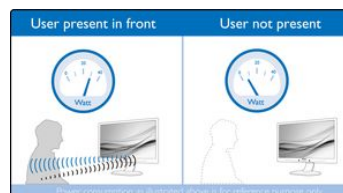
### Built-in stereo speakers

A pair of high-quality stereo speakers built into a display device. They may be visible front firing, or invisible down firing, top firing, rear firing etc. depending on model and design.

### Four Ports USB 2.0 HUB

USB Hub allows user to conveniently connect their plug and play multimedia devices such as USB memory devices, camera, portable HDD, Web camera, PDA, Printer and many other devices which have USB connection available. The conveniently located USB 2.0 Hub on the monitor allows USB 2.0 signals to pass through to the computer. Note that many devices like cameras and HDD may need to be powered On independently, as they have higher power requirements than the monitor USB Hub can provide.

### PowerSensor



PowerSensor is a built-in 'people sensor' that transmits and receives harmless infrared signals to determine if the user is present and then automatically reduces monitor brightness when the user steps away from the desk, cutting energy costs by up to 80 percent and prolonging monitor life

### TCO Edge

TCO Edge certification is given to products that go beyond existing eco-labelling programmes. Over and above standard TCO requirements, it further mandates that the product should use a minimum of 85% of post consumer recycled plastics, be energy efficient, use minimal hazardous materials, have 100% recyclable packaging and be designed for easy recycling, amongst other requirements. You can rest assured that this Philips monitor is a cutting-edge technology product, which is best in class ICT, benefitting you and the planet while helping you make a responsible green IT purchase!

Aspect ratio	16:9
Optimum resolution	1920 x 1080 @ 60 Hz
Response time (typical)	5 ms
Brightness	250 cd/m <sup>2</sup>

Contrast ratio (typical)	1000:1
SmartContrast	20,000,000:1
Pixel pitch	0.248 x 0.248 mm
Viewing angle	170° (H)/160° (V) @ C/R > 10
Picture enhancement	SmartImage
Display colours	16.7 M
Scanning Frequency sRGB	30 - 83 kHz (H) / 56 - 76 Hz (V) Yes

#### Connectivity

Signal Input	DVI-D (digital, HDCP) VGA (Analogue)
USB	USB 2.0 x 4
Sync Input	Separate Sync Sync on Green
Audio (In/Out)	PC audio-in Headphone out

#### Convenience

Built-in Speakers	2 W x 2
User convenience	SmartImage Volume PowerSensor Menu Power On/Off
Control software	SmartControl
OSD Languages	Brazil Portuguese Czech Dutch English Finnish French German Greek Hungarian Italian Japanese Korean Polish Portuguese Russian Simplified Chinese Spanish Swedish Traditional Chinese Turkish Ukrainian
Other convenience	Kensington lock VESA mount (100 x 100 mm)
Plug and Play Compatibility	DDC/CI Mac OS X sRGB Windows 10 / 8.1 / 8 / 7

#### Stand

Height adjustment	110 mm
Pivot	90 degree
Swivel	-75/+75 degree
Tilt	-5/20 degree

#### Power

ECO mode	11.01 W (typ.)
On mode	15.1 W (typ.) (EnergyStar 7.0 test method)
Standby mode	< 0.3 W (typ.)
Off mode	Zero watts with AC switch
Power LED indicator	Operation - White Standby mode - White (flashing)
Power supply	Built-in 100-240 VAC, 50-60 Hz

#### Dimensions

Product with stand (max height)	511 x 483 x 227 mm
Product without stand (mm)	511 x 319 x 52 mm
Packaging in mm (W x H x D)	565 x 422 x 184 mm

#### Weight

Product with stand (kg)	4.83 kg
Product without stand (kg)	2.99 kg
Product with packaging (kg)	6.61 kg

#### Operating conditions

Temperature range (operation)	0°C to 40°C °C
Temperature range (storage)	-20°C to 60°C °C
Relative humidity	20%–80% %
Altitude	Operation: +12,000 ft (3658 m), Non-operation: +40,000 ft (12,192 m)
MTBF	70,000 hrs (excluded backlight) hour(s)

#### Sustainability

Environmental and energy	EnergyStar 7.0 PowerSensor EPEAT Gold* TCO edge RoHS
Recyclable packaging material	100 %
Post-consumer recycled plastic	85%
Specific Substances	PVC/BFR free housing Mercury free Lead free

#### Compliance and standards

Regulatory Approvals	CE Mark FCC Class B SEMKO cETLus CU-EAC TCO edge TUV/GS TUV Ergo EPA PSB WEEE RCM UKRAINIAN CECP ICES-003 E-standby J-MOSS
----------------------	--

#### Cabinet

Front bezel	Black
Rear cover	Black
Foot	Black
Finish	Texture

#### What's in the box?

Cables	VGA, DVI, Audio, Power
Monitor with stand	Yes
User Documentation	Yes

\* EPEAT Gold or Silver is valid only where Philips registers the product. Please visit [www.epeat.net](http://www.epeat.net) for registration status in your country.



data subject to change  
2018, October 18

Version: 4.0.1  
EAN: 8712581740320

© 2018 Koninklijke Philips N.V.  
All rights reserved.

Specifications are subject to change without notice. Trademarks are the property of Koninklijke Philips N.V. or their respective owners.

[www.philips.com](http://www.philips.com)