



LCD monitor with USB-C Dock

- P Line
- 32 (31.5" / 80 cm diag.)
- 4K UHD (3840 x 2160)

329P9H/27

Ultra-clarity, outstanding color,

for when it matters

When every detail matters, Philips Brilliance 32" 4K display delivers crisp visuals with accurate color. Convenient features like USB-C docking and a secure pop-up webcam with Windows Hello increase your productivity.

Benefits

Brilliant performance

- UltraClear 4K UHD (3840x2160) resolution for precision
- IPS technology for full colors and wide viewing angles

Optimal Connectivity

- Built in USB-C docking station
- Built in RJ-45 ethernet gives data security

Designed for the way you work

- MultiView enables simultaneous dual connect and view

- Securely sign in with pop-up webcam with Windows Hello™
- SmartErgoBase enables people-friendly ergonomic adjustments
- LowBlue Mode for easy on-the-eyes productivity

Sustainable Eco-design

- LightSensor for the perfect brightness with minimal power
- PowerSensor saves up to 80% energy costs

PHILIPS

Features

UltraClear 4K UHD Resolution



These latest Philips displays utilize high performance panels to deliver UltraClear, 4K UHD (3840 x 2160) resolution images. Whether you are demanding professional requiring extremely detailed images for CAD solutions, using 3D graphics applications or a financial wizard working on huge spreadsheets, Philips displays will make your images and graphics come alive.

IPS technology



IPS displays use an advanced technology which gives you extra wide viewing angles of 178/178 degree, making it possible to view the display from almost any angle - even in 90 degree Pivot mode! Unlike standard TN panels, IPS displays gives you remarkably crisp images with vivid colors, making it ideal not only for Photos, movies and web browsing, but also for professional applications which demand color accuracy and consistent brightness at all times.

Built in USB-C docking station

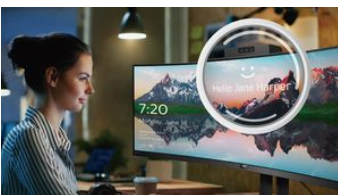


This Philips display features a built-in USB 3.1 type-C docking station with power delivery. Its slim, reversible USB-C connector allows for easy, one-cable docking. Simplify by connecting all your peripherals like keyboard, mouse and your RJ-45 Ethernet cable to the monitor's docking station. Simply connect your notebook and this monitor with a single USB-C cable to watch high-resolution video and transfer super-speed data, while powering up and re-charging your notebook at the same time.

MultiView technology

With the ultra-high resolution Philips MultiView display you can now experience a world of connectivity. MultiView enables active dual connect and view so that you can work with multiple devices like a PC and notebook simultaneously, for complex multi-tasking.

Windows Hello™ pop-up webcam



Phillips' innovative and secure webcam pops up when you need it and securely tucks back into the monitor when you are not using it. The webcam is also equipped with advanced sensors for Windows Hello™ facial recognition, which conveniently logs you into your Windows devices in less than 2 seconds, 3 times faster than a password.

SmartErgoBase



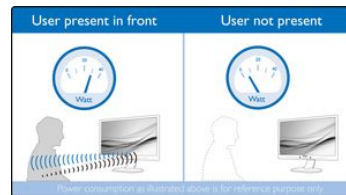
The SmartErgoBase is a monitor base that delivers ergonomic display comfort and provides cable management. The base's people-friendly height, swivel, tilt and rotation angle adjustments position the monitor for maximum comfort that can ease the physical strains of a long workday; cable management reduces cable clutter and keeps the workspace neat and professional.

LightSensor



LightSensor uses a smart sensor to adjust the picture brightness depending on the room light conditions for the perfect picture with minimal power usage.

PowerSensor



PowerSensor is a built-in 'people sensor' that transmits and receives harmless infrared signals to determine if user is present and automatically reduces monitor brightness when user steps away from the desk, cutting energy costs by up to 80 percent and prolonging monitor life

LowBlue Mode



Studies have shown that just as ultra-violet rays can cause eye damage, shortwave length blue light rays from LED displays can cause eye damage and affect vision over time. Developed for wellbeing, Philips LowBlue Mode setting uses a smart software technology to reduce harmful shortwave blue light.

Specifications

Please note that this is a pre-sales leaflet. The contents of this leaflet reflect the best of our knowledge per date and country mentioned above. The contents of this leaflet are subject to change without notice. Philips does not accept any liability as to the contents of this leaflet.

Picture/Display

LCD panel type	IPS technology
Backlight type	W-LED system
Panel Size	31.5 inch / 80 cm
Display Screen Coating	Anti-Glare, 3H, Haze 25%
Effective viewing area	697.3 (H) x 392.2 (V)
Aspect ratio	16:9
Optimum resolution	3840 x 2160 @ 60Hz
Pixel Density	140 PPI
Response time (typical)	5 ms (Gray to Gray)*
Brightness	350 cd/m ²
Contrast ratio (typical)	1300:1
SmartContrast	50,000,000:1
Pixel pitch	0.182 x 0.182 mm
Viewing angle	178° (H) / 178° (V) @ C/R > 10
Flicker-free	Yes
Picture enhancement	SmartImage
Display colors	Color support 1.07 billion colors
Color gamut (typical)	NTSC 90%*, sRGB 108%*, Adobe RGB 87%*
Scanning Frequency	30 - 160 kHz (H) / 23 - 80 Hz (V)
SmartUniformity	97 ~ 102 %
Delta E	< 2
sRGB	Yes
LowBlue Mode	Yes
EasyRead	Yes

Connectivity

Signal Input	DisplayPort 1.2 x 1, DisplayPort out x 1, HDMI 2.0 x 2, USB-C 3.1 Gen 2 x 1 (upstream, power delivery up to 65W)
HDCP	HDCP 2.2 (HDMI/ DP / USB-C)
USB:	USB 3.1 x 4 (downstream with x 1 fast charge B.C 1.2)
Audio (In/Out)	Headphone out
RJ45	Ethernet LAN (10M/100M/1G)
Sync Input	Separate Sync Sync on Green

USB docking

USB-C	Reversible plug connector
Super speed	Data and Video transfer
DP	Built-in Display Port Alt mode
USB-C power delivery	USB PD version 2.0
USB-C max. power delivery	Up to 65W (5V/3A; 9V/3A; 10V/3A; 12V/3A; 15V/3A; 20V/3.25A)

Convenience

Built-in Speakers	3 W x 2
Built-in webcam	2.0 megapixel FHD camera with microphone and LED indicator (for Windows 10 Hello)
MultiView	PIP/PBP mode 2x devices
User convenience	SmartImage User 1 User 2 Menu Power On/Off
Control software	SmartControl
OSD Languages	Brazil Portuguese Czech Dutch English Finnish French German Greek Hungarian

Italian
Japanese
Korean
Polish
Portuguese
Russian
Simplified Chinese
Spanish
Swedish
Traditional Chinese
Turkish
Ukrainian
Kensington lock
VESA mount (100x100mm)
DDC/CI
Mac OS X
sRGB
Windows 10 / 8.1 / 8 / 7

Other convenience
Plug & Play Compatibility

Stand

Height adjustment	180 mm
Pivot	-/+ 90 degree
Swivel	-/+ 175 degree
Tilt	-5/25 degree

Power

ECO mode	30.8 W (typ.)
On mode	33 W (typ.) (EnergyStar 7.0 test method)
Standby mode	< 0.5 W (typ.)
Off mode	Zero watts with Zero switch
Power LED indicator	Operation - White Standby mode- White (blinking)
Power supply	Built-in 100-240VAC, 50-60Hz

Dimensions

Product with stand(max height)	715 x 636 x 246 mm
Product with stand(max height)	28.1 x 25.0 x 9.7 inch
Product without stand (mm)	715 x 412 x 51 mm
Product without stand in inch	28.1 x 16.2 x 2.0 inch
Packaging in mm (WxHxD)	793 x 673 x 186 mm
Packaging in inch (WxHxD)	31.2 x 26.5 x 7.3 inch

Weight

Product with stand (kg)	10.63 kg
Product with stand (lb)	23.39 lb
Product without stand (kg)	7.33 kg
Product without stand (lb)	16.13 lb
Product with packaging (kg)	14.43 kg
Product with packaging (lb)	31.74 lb

Operating conditions

Temperature range (operation)	0°C to 40°C °C
Temperature range (storage)	-20°C to 60°C °C
Relative humidity	20%-80 %
Altitude	Operation: +12,000ft (3,658m), Non-operation: +40,000ft (12,192m)
MTBF (demonstrated)	70,000 hrs (excluded backlight)

Sustainability

Environmental and energy	PowerSensor LightSensor EnergyStar 7.0 EPEAT* TCO certified WEEE RoHS
Recyclable packaging material	100 %
Post consumer recycled plastic	85%
Specific Substances	PVC / BFR free housing Mercury free Lead free

Compliance and standards

Regulatory Approvals	CE Mark FCC Class B China RoHS UKRAINIAN
----------------------	---

ICES-003
CU-EAC
TUV Ergo
TUV/GS
SEMKO
EPA
cETLus

Cabinet

Front bezel	Black
Rear cover	Black
Foot	Black
Finish	Texture

What's in the box?

Monitor with stand	Yes
Cables	HDMI cable, DP cable, USB-C to C cable, USB-C to A cable, Power cable
User Documentation	Yes

* "IPS" word mark / trademark and related patents on technologies belong to their respective owners.

* Response time value equal to SmartResponse

* NTSC Area based on CIE1976

* sRGB Area based on CIE 1931

* Adobe RGB Coverage based on CIE1976

* Activities such as screen sharing, on-line streaming video and audio over the Internet can impact your network performance. Your hardware, network bandwidth and its performance will determine overall audio and video quality.

* For USB-C power and charging function, your Notebook/device must support USB-C standard Power Delivery specifications. Please check with your Notebook user manual or manufacturer for more details.

* For Video transmission via USB-C, your Notebook/device must support USB-C DP Alt mode

* Cannot support USB-C vs HDMI for PIP/PBP at the same time

* EPEAT Gold or Silver is valid only where Philips registers the product. Please visit www.epeat.net for registration status in your country.

* The monitor may look different from feature images.



data subject to change
2019, March 8

Version: 3.0.1
UPC: 609585252509

© 2019 Koninklijke Philips N.V.
All rights reserved.

Specifications are subject to change without notice. Trademarks are the property of Koninklijke Philips N.V. or their respective owners.

www.philips.com