

PHILIPS

LCD monitor with
PowerSensor

B Line

25" (63.4 cm)

WUXGA (1920 x 1200)

252B9



Clear vision, beyond boundaries

Expand beyond boundaries with the new 16:10 frameless design Philips B Line monitor. Loaded with features to improve productivity and sustainability, this monitor takes it to the next level.

Designed for sustainability

- PowerSensor saves up to 80% energy costs
- Zero power consumption with 0 watt hard switch
- 100% Recycled packing material

Excellent performance

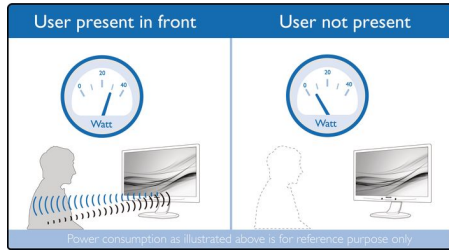
- 16:10 aspect ratio for more vertical screen height
- IPS technology for full colors and wide viewing angles

Designed for the way you work

- SmartErgoBase enables people-friendly ergonomic adjustments
- VESA mount allows for the perfect setup
- Less eye fatigue with Flicker-free technology
- LowBlue Mode for easy on-the-eyes productivity
- EasyRead mode for a paper-like reading experience

Highlights

PowerSensor

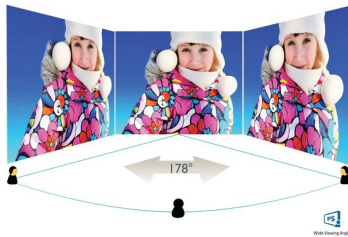


PowerSensor is a built-in 'people sensor' that transmits and receives harmless infrared signals to determine if user is present and automatically reduces monitor brightness when user steps away from the desk, cutting energy costs by up to 80 percent and prolonging monitor life

Zero power consumption

At the flick of the 0 watt hard switch which is conveniently located at the back, you can completely cut-off your monitor from AC power. This results in zero power consumption reducing your carbon footprint even further

IPS technology



IPS displays use an advanced technology which gives you extra wide viewing angles of 178/178 degree, making it possible to view the display from almost any angle - even in 90 degree Pivot mode! Unlike standard TN panels, IPS displays gives you remarkably crisp images with vivid colors, making it ideal not

only for Photos, movies and web browsing, but also for professional applications which demand color accuracy and consistent brightness at all times.

SmartErgoBase



The SmartErgoBase is a monitor base that delivers ergonomic display comfort and provides cable management. The base's people-friendly height, swivel, tilt and rotation angle adjustments position the monitor for maximum comfort that can ease the physical strains of a long workday; cable management reduces cable clutter and keeps the workspace neat and professional.

VESA mount

VESA pattern guarantees compatibility hundreds of innovative mounting solutions.

Flicker-free technology



Due to the way brightness is controlled on LED-backlit screens, some users experience flicker on their screen which causes eye

fatigue. Philips Flicker-free Technology applies a new solution to regulate brightness and reduce flicker for more comfortable viewing.

LowBlue Mode



Studies have shown that just as ultra-violet rays can cause eye damage, shortwave length blue light rays from LED displays can cause eye damage and affect vision over time. Developed for wellbeing, Philips LowBlue Mode setting uses a smart software technology to reduce harmful shortwave blue light.

EasyRead mode



EasyRead mode for a paper-like reading experience



zero power switch



Specifications

Picture/Display

LCD panel type: IPS technology
Backlight type: W-LED system
Panel Size: 25 inch / 63.4 cm
Display Screen Coating: Anti-Glare, 3H, Haze 25%
Effective viewing area: 535.5 (H) x 338.8 (V)
Aspect ratio: 16:10
Optimum resolution: 1920 x 1200 @ 60Hz
Pixel Density: 91 PPI
Response time (typical): 5 ms (Gray to Gray)*
Brightness: 300 cd/m²
Contrast ratio (typical): 1000:1
SmartContrast: 50,000,000:1
Pixel pitch: 0.279 x 0.282 mm
Viewing angle: 178° (H) / 178° (V), @ C/R > 10
Flicker-free
Picture enhancement: SmartImage
Color gamut (typical): NTSC 90%*, sRGB 107.5%*
Display colors: 16.7M
Scanning Frequency: 30 - 96 kHz (H) / 48 - 76 Hz (V)
sRGB
EasyRead
LowBlue Mode

Connectivity

Signal Input: VGA (Analog), DVI-D (digital, HDCP), DisplayPort 1.2, HDMI 1.4
HDCP: HDCP 1.4 (HDMI/ DP)
Sync Input: Separate Sync, Sync on Green
USB:: USB 3.1 x 1 (upstream), USB 3.1 x 4 (downstream with 1 fast charge B.C 1.2)
Audio (In/Out): PC audio-in, Headphone out

Convenience

Built-in Speakers: 2 W x 2
User convenience: SmartImage, Input, Brightness, Menu, Power On/Off
Control software: SmartControl

OSD Languages: Brazil Portuguese, Czech, Dutch, English, Finnish, French, German, Greek, Hungarian, Italian, Japanese, Korean, Polish, Portuguese, Russian, Simplified Chinese, Spanish, Swedish, Traditional Chinese, Turkish, Ukrainian
Other convenience: Kensington lock, VESA mount (100x100mm)
Plug & Play Compatibility: DDC/CI, Mac OS X, sRGB, Windows 10 / 8.1 / 8 / 7

Stand

Height adjustment: 150 mm
Pivot: -/+ 90 degree
Swivel: -/+ 175 degree
Tilt: -5 ~ 30 degree

Power

ECO mode: 12.3 W (typ.)
On mode: 15 W (typ.) (EnergyStar 7.0 test method)
Standby mode: < 0.5 W (typ.)
Off mode: Zero watts with Zero switch
Power LED indicator: Operation - White, Standby mode- White (blinking)
Power supply: Built-in, 100-240VAC, 50-60Hz

Dimensions

Product with stand(max height): 546 x 541 x 206 mm
Product without stand (mm): 546 x 367 x 49 mm
Packaging in mm (WxHxD): 608 x 524 x 197 mm

Weight

Product with stand (kg): 5.09 kg
Product without stand (kg): 3.50 kg
Product with packaging (kg): 7.44 kg

Operating conditions

Temperature range (operation): 0°C to 40°C °C
Temperature range (storage): -20°C to 60°C °C
Relative humidity: 20%-80 %
Altitude: Operation: +12,000ft (3,658m), Non-operation: +40,000ft (12,192m)
MTBF (demonstrated): 70,000 hrs (excluded backlight)

Sustainability

Environmental and energy: PowerSensor, EnergyStar 7.0, EPEAT*, TCO certified, WEEE, RoHS
Recyclable packaging material: 100 %
Post consumer recycled plastic: 85%
Specific Substances: PVC / BFR free housing, Mercury free, Lead free

Compliance and standards

Regulatory Approvals: CE Mark, FCC Class B, SEMKO, cETLus, CU-EAC, TUV Ergo, TUV/GS, EPA, ICES-003, J-MOSS, PSE, VCCI

Cabinet

Front bezel: Black
Rear cover: Black
Foot: Black
Finish: Texture

