



Philips
Full HD LCD monitor

V Line

22 (21.5"/54.6 cm diag.)
1920 x 1080 (Full HD)

223V7QSB



Vivid, crisp images, from edge to edge

A perfect all-round display with stunning images that stretch from edge to edge, made easy on the eyes, in a compact, slim design.

Vivid pictures every time

- IPS LED wide view technology for image and colour accuracy
- 16:9 Full HD display for crisp, detailed images
- Narrow-border display for a seamless appearance
- SmartContrast for rich black details
- SmartImage pre-sets for easy optimised image settings

Easy on the eyes

- Less eye fatigue with Flicker-Free technology
- LowBlue Mode for easy-on-the-eyes productivity
- EasyRead mode for a paper-like reading experience

Perfectly designed for your space

- Compact design saves space
- Mercury Free eco-friendly display
- VESA mount allows for flexibility

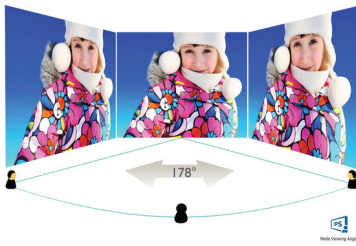
PHILIPS

Full HD LCD monitor
V Line 22 (21.5"/54.6 cm diag.), 1920 x 1080 (Full HD)

223V7QSB/00

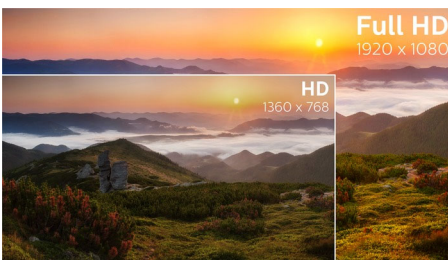
Highlights

IPS technology



IPS displays use an advanced technology that gives you extra-wide viewing angles of 178/178 degrees, making it possible to view the display from almost any angle. Unlike standard TN panels, IPS displays give you remarkably crisp images with vivid colours, making them ideal not only for Photos, movies and web browsing, but also for professional applications that demand colour accuracy and consistent brightness at all times.

16:9 Full HD display



Picture quality matters. Regular displays deliver quality, but you expect more. This display features enhanced Full HD 1920 x 1080 resolution. With Full HD for crisp detail paired with high brightness, incredible contrast and realistic colours, expect a true-to-life picture.

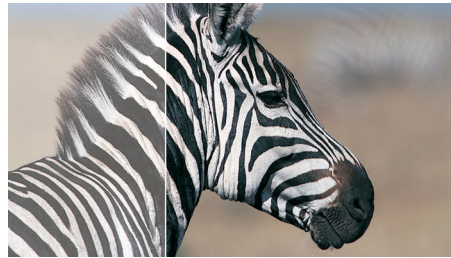
Ultra-narrow Border



The new Philips displays feature ultra-narrow borders which allow for minimal distractions

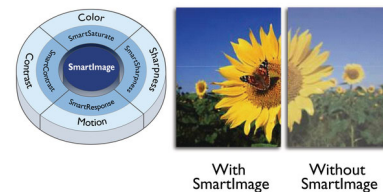
and maximum viewing size. Especially suited for multi-display or tiling setups like gaming, graphic design and professional applications, the ultra-narrow border display gives you the feeling of using one large display.

SmartContrast



SmartContrast is a Philips technology that analyses the contents you are displaying, automatically adjusting colours and controlling backlight intensity to dynamically enhance contrast for the best digital images and videos or when playing games where dark hues are displayed. When Economy mode is selected, contrast is adjusted and backlighting fine-tuned for just-right display of everyday office applications and lower power consumption.

SmartImage



SmartImage is an exclusive leading edge Philips technology that analyses the content displayed on your screen and optimises your display performance. This user-friendly interface allows you to select various modes, like Office, Photo, Movie, Game, Economy etc., to fit the application in use. Based on the selection, SmartImage dynamically optimises the contrast, colour saturation and sharpness of images and videos for ultimate display performance. The Economy mode option

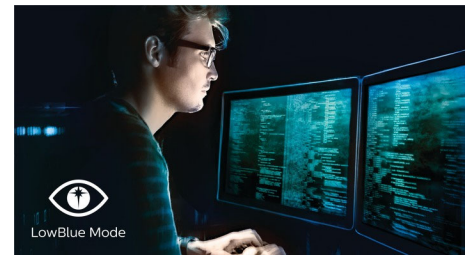
offers you major power savings. All in real time at the touch of a single button!

Flicker-Free technology



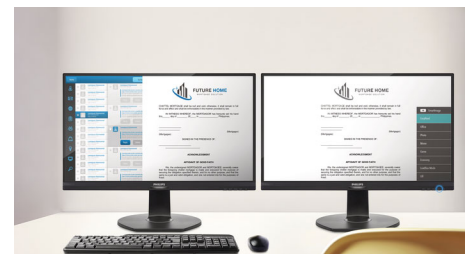
Due to the way brightness is controlled on LED-backlit screens, some users experience flicker on their screen which causes eye fatigue. Philips Flicker-Free technology applies a new solution to regulate brightness and reduce flicker for more comfortable viewing.

LowBlue Mode



Studies have shown that just as ultra-violet rays can cause eye damage, shortwave-length blue light rays from LED displays can cause eye damage and affect vision over time. Developed for wellbeing, the Philips LowBlue Mode setting uses a smart software technology to reduce harmful shortwave blue light.

EasyRead mode



EasyRead mode for a paper-like reading experience



Specifications

Picture/Display

- LCD panel type: IPS technology
- Backlight type: W-LED system
- Panel Size: 21.5 inch/54.6 cm
- Effective viewing area: 476.06 (H) x 267.79 (V)
- Aspect ratio: 16:9
- Optimum resolution: 1920 x 1080 @ 60 Hz
- Pixel Density: 102 PPI
- Response time (typical): 8 ms (GtG_BW)*
- Brightness: 250 cd/m²
- SmartContrast: 10,000,000:1
- Contrast ratio (typical): 1000:1
- Pixel pitch: 0.248 x 0.248 mm
- Viewing angle: 178° (H)/178° (V), @ C/R > 10
- Flicker-free
- Display colours: 16.7 M
- Scanning Frequency: 30–83 kHz (H)/56–76 Hz (V)
- LowBlue Mode
- sRGB

Connectivity

- Signal Input: VGA (Analogue), DVI-D (digital, HDCP)
- Sync Input: Separate Sync, Sync on Green

Convenience

- User convenience: Power On/Off, Menu/OK, Brightness/UP, Input/Down, SmartImage/Back
- OSD Languages: Brazil Portuguese, Czech, Dutch, English, Finnish, French, German, Greek, Hungarian, Italian, Japanese, Korean, Polish, Portuguese, Russian, Spanish, Simplified Chinese, Swedish, Turkish, Traditional Chinese, Ukrainian
- Other convenience: Kensington lock, VESA mount (100 x 100 mm)
- Plug and Play Compatibility: DDC/CI, Mac OS X, sRGB, Windows 10 / 8.1 / 8 / 7

Stand

- Tilt: -5/20 degree

Power

- On mode: 13.09 W (typ.) (EnergyStar 7.0 test method)

- Energy Label Class: E
- Standby mode: 0.5 W (typ.)
- Off mode: 0.5 W (typ.)
- Power LED indicator: Operation - White, Standby mode - White (flashing)
- Power supply: Built-in, 100–240 VAC, 50–60 Hz

Dimensions

- Product with stand (mm): 490 x 368 x 195 mm
- Product without stand (mm): 490 x 296 x 45 mm
- Packaging in mm (W x H x D): 575 x 440 x 113 mm

Weight

- Product with stand (kg): 2.92 kg
- Product without stand (kg): 2.56 kg
- Product with packaging (kg): 4.23 kg

Operating conditions

- Temperature range (operation): 0°C to 40°C °C
- Temperature range (storage): -20°C to 60°C °C
- Relative humidity: 20%-80 %
- Altitude: Operation: +12,000 ft (3658 m), Non-operation: +40,000 ft (12,192 m)
- MTBF: 50 000 (Excluded backlight) hour(s)

Sustainability

- Environmental and energy: EnergyStar 7.0, RoHS, Mercury Free
- Recyclable packaging material: 100 %

Compliance and standards

- Regulatory Approvals: CU, SEMKO, cETLus, TUV/ISO9241-307, WEEE, TCO Certified, CE Mark, FCC Class B, ICES-003, RCM, UKRAINIAN, CECP, TUV Cert. — blue light cut-off

Cabinet

- Colour: Black
- Finish: Textured

What's in the box?

- Monitor with stand
- Cables: D-Sub cable, Power cable
- User Documentation



Issue date 2022-05-18

Version: 6.0.1

12 NC: 8670 001 41688
EAN: 87 12581 74276 8

© 2022 Koninklijke Philips N.V.
All Rights reserved.

Specifications are subject to change without notice.
Trademarks are the property of Koninklijke Philips N.V.
or their respective owners.

www.philips.com

* "IPS" word mark / trademark and related patents on technologies belong to their respective owners.
* Response time value equal to SmartResponse