

PHILIPS

B line

241B7



www.philips.com/welcome

| | | |
|----|----------------------------|----|
| EN | User manual | 1 |
| | Customer care and warranty | 29 |
| | Troubleshooting & FAQs | 33 |

Table of Contents

| | |
|--|----|
| 1. Important | 1 |
| 1.1 Safety precautions and maintenance | 1 |
| 1.2 Notational Descriptions | 3 |
| 1.3 Disposal of product and packing material | 4 |
| 2. Setting up the monitor | 5 |
| 2.1 Installation | 5 |
| 2.2 Operating the monitor | 8 |
| 2.3 Remove the Base Assembly for VESA Mounting | 11 |
| 3. Built-in Windows Hello™ pop-up webcam | 12 |
| 4. USB docking display introduction | 14 |
| 4.1 How to operate USB docking display through USB C to C cable? | 14 |
| 4.2 How to operate USB docking display through USB C to A cable? | 14 |
| 5. Image Optimization | 18 |
| 5.1 SmartImage | 18 |
| 5.2 SmartContrast | 20 |
| 6. PowerSensor™ | 21 |
| 7. Daisy-chain function | 23 |
| 8. Technical Specifications | 24 |
| 8.1 Resolution & Preset Modes ... | 27 |
| 9. Power Management | 28 |
| 10. Customer care and warranty . | 29 |
| 10.1 Philips' Flat Panel Monitors Pixel Defect Policy | 29 |
| 10.2 Customer Care & Warranty | 32 |
| 11. Troubleshooting & FAQs | 33 |
| 11.1 Troubleshooting | 33 |
| 11.2 General FAQs | 34 |

1. Important

This electronic user's guide is intended for anyone who uses the Philips monitor. Take time to read this user manual before you use your monitor. It contains important information and notes regarding operating your monitor.

The Philips guarantee applies provided the product is handled properly for its intended use, in accordance with its operating instructions and upon presentation of the original invoice or cash receipt, indicating the date of purchase, dealer's name and model and production number of the product.

1.1 Safety precautions and maintenance

Warnings

Use of controls, adjustments or procedures other than those specified in this documentation may result in exposure to shock, electrical hazards and/or mechanical hazards.

Read and follow these instructions when connecting and using your computer monitor.

Excessive sound pressure from earphones and headphones can cause hearing loss. Adjustment of the equalizer to maximum increases the earphones and headphones output voltage and therefore the sound pressure level.

Operation

- Please Keep the monitor out of direct sunlight, very strong bright lights and away from any other heat source. Lengthy exposure to this type of environment may result in discoloration and damage to the monitor.
- Remove any object that could fall into ventilation holes or prevent proper cooling of the monitor's electronics.
- Do not block the ventilation holes on the cabinet.
- When positioning the monitor, make sure the power plug and outlet are easily accessible.
- If turning off the monitor by detaching the power cable or DC power cord, wait for 6 seconds before attaching the power cable or DC power cord for normal operation.
- Please use approved power cord provided by Philips all the time. If your power cord is missing, please contact with your local service center. (Please refer to Service contact information listed in Important information manual.)
- Operate under the specified power supply. Be sure to operate the monitor only with the specified power supply. Use of an incorrect voltage will cause malfunction and may cause fire or electric shock.
- Protect the cable. Do not pull or bend the power cable and signal cable. Do not place the monitor or any other heavy objects on the cables, if damaged, the cables may cause fire or electric shock.
- Do not subject the monitor to severe vibration or high impact conditions during operation.
- Do not knock or drop the monitor during operation or transportation.
- Excessive usage of monitor can cause eye discomfort, it's better to take shorter breaks more often at your workstation than longer breaks and less often; for example a 5-10 minute break after 50-60-minute continuous screen use is likely to

i. Important

be better than a 15-minute break every two hours. Try to keep your eyes from eye strain while using the screen for a constant period of time by :

- Looking at something varying distances after a long period focusing on the screen.
- Conscious Blinking often while you work.
- Gently closing and rolling your eyes to relax.
- Reposition your screen to appropriate height and angle according to your height.
- Adjusting the brightness and contrast to appropriate level.
- Adjusting the environment lighting similar to that of your screen brightness, avoid the fluorescent lighting, and surfaces that don't reflect too much light.
- Seeing a doctor if your symptoms.

Maintenance

- To protect your monitor from possible damage, do not put excessive pressure on the LCD panel. When moving your monitor, grasp the frame to lift; do not lift the monitor by placing your hand or fingers on the LCD panel.
- Unplug the monitor if you are not going to use it for an extensive period of time.
- Unplug the monitor if you need to clean it with a slightly damp cloth. The screen may be wiped with a dry cloth when the power is off. However, never use organic solvent, such as, alcohol, or ammonia-based liquids to clean your monitor.
- To avoid the risk of shock or permanent damage to the set, do

not expose the monitor to dust, rain, water, or excessive moisture environment.

- If your monitor gets wet, wipe it with dry cloth as soon as possible.
- If foreign substance or water gets in your monitor, please turn the power off immediately and disconnect the power cord. Then, remove the foreign substance or water, and send it to the maintenance center.
- Do not store or use the monitor in locations exposed to heat, direct sunlight or extreme cold.
- In order to maintain the best performance of your monitor and use it for a longer lifetime, please use the monitor in a location that falls within the following temperature and humidity ranges.
 - Temperature: 0-40°C 32-104°F
 - Humidity: 20-80% RH

Important information for Burn-in/ Ghost image

- Always activate a moving screen saver program when you leave your monitor unattended. Always activate a periodic screen refresh application if your monitor will display unchanging static content. Uninterrupted display of still or static images over an extended period may cause "burn in", also known as "after-imaging" or "ghost imaging", on your screen.
- "Burn-in", "after-imaging", or "ghost imaging" is a well-known phenomenon in LCD panel technology. In most cases, the "burned in" or "after-imaging" or "ghost imaging" will disappear gradually over a period of time after the power has been switched off.

i. Important

Warning

Failure to activate a screen saver, or a periodic screen refresh application may result in severe “burn-in” or “after-image” or “ghost image” symptoms that will not disappear and cannot be repaired. The damage mentioned above is not covered under your warranty.

Service

- The casing cover should be opened only by qualified service personnel.
- If there is any need for any document for repair or integration, please contact with your local service center. (Please refer to Service contact information listed in Important information manual.)
- For transportation information, please refer to “Technical Specifications”.
- Do not leave your monitor in a car/trunk under direct sun light.

Note

Consult a service technician if the monitor does not operate normally, or you are not sure what procedure to take when the operating instructions given in this manual have been followed.

1.2 Notational Descriptions

The following subsections describe notational conventions used in this document.

Notes, Cautions and Warnings

Throughout this guide, blocks of text may be accompanied by an icon and printed in bold or italic type. These blocks contain notes, cautions or warnings. They are used as follows:

Note

This icon indicates important information and tips that help you make better use of your computer system.

Caution

This icon indicates information that tells you how to avoid either potential damage to hardware or loss of data.

Warning

This icon indicates the potential for bodily harm and tells you how to avoid the problem.

Some warnings may appear in alternate formats and may not be accompanied by an icon. In such cases, the specific presentation of the warning is mandated by the relevant regulatory authority.

1.3 Disposal of product and packing material

Waste Electrical and Electronic Equipment-WEEE



This marking on the product or on its packaging illustrates that, under European Directive 2012/19/EU governing used electrical and electronic appliances, this product may not be disposed of with normal household waste. You are responsible for disposal of this equipment through a designated waste electrical and electronic equipment collection. To determine the locations for dropping off such waste electrical and electronic, contact your local government office, the waste disposal organization that serves your household or the store at which you purchased the product.

Your new monitor contains materials that can be recycled and reused. Specialized companies can recycle your product to increase the amount of reusable materials and to minimize the amount to be disposed of.

All redundant packing material has been omitted. We have done our utmost to make the packaging easily separable into mono materials.

Please find out about the local regulations on how to dispose of your old monitor and packing from your sales representative.

Taking back/Recycling Information for Customers

Philips establishes technically and economically viable objectives to optimize the environmental performance of the organization's product, service and activities.

From the planning, design and production stages, Philips emphasizes the important of making products that can easily be recycled. At Philips, end-of-life management primarily entails participation in national take-back initiatives and recycling programs whenever possible, preferably in cooperation with competitors, which recycle all materials (products and related packaging material) in accordance with all Environmental Laws and taking back program with the contractor company.

Your display is manufactured with high quality materials and components which can be recycled and reused.

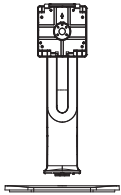
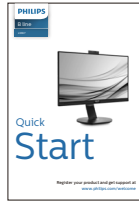
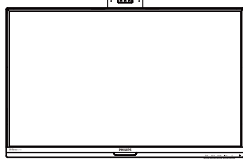
To learn more about our recycling program please visit

<http://www.philips.com/a-w/about/sustainability.html>

2. Setting up the monitor

2.1 Installation

1 Package contents



* CD



Power



*DC



*DP



*HDMI

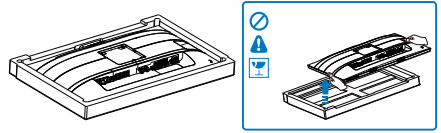


*USB C-C/A

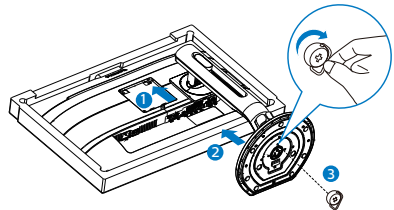
*Different according to region

2 Install the base

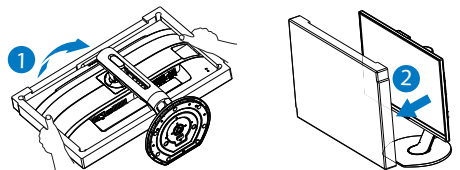
1. In order to well protect this monitor and avoid scratching or damaging of the monitor, keep the monitor face down in the cushion for the base installation.



2. Hold the stand with both hands.
 - (1) Gently attach the stand to the VESA mount area until the latch locks the stand.
 - (2) Gently attach the base to the stand.
 - (3) Use your fingers to tighten the screw located at the bottom of the base, and secure the base to the stand tightly.

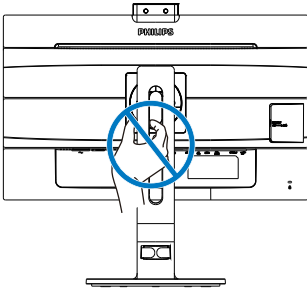


3. After attaching the base, erect the monitor with both hands on holding the monitor together with styrofoam firmly. Now you can pull out the styrofoam. When you pull out the styrofoam, do not squeeze the panel to avoid broken panel.

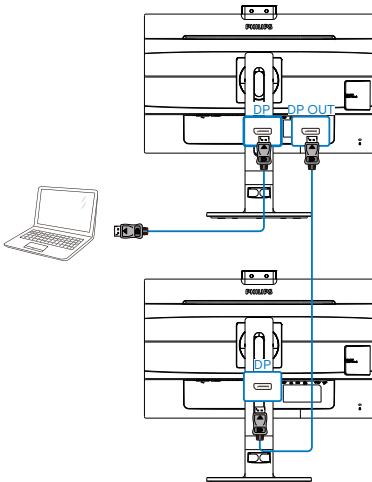
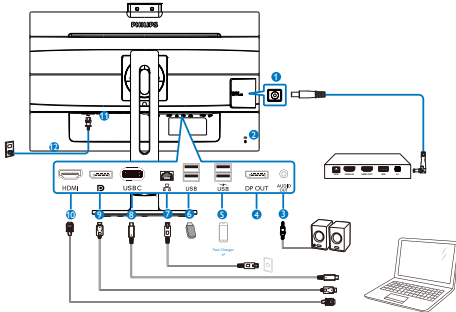


2. Setting up the monitor

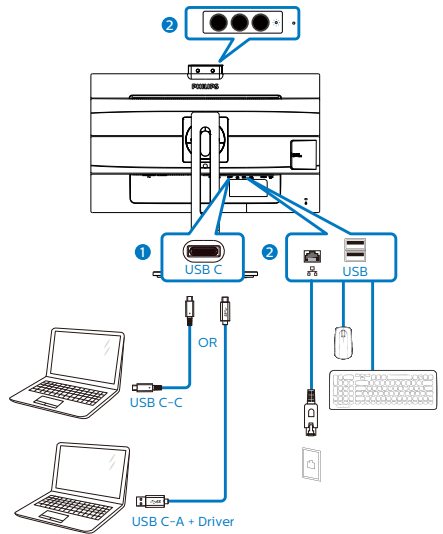
⚠ Warnings



3 Connecting to your PC



USB docking



- 1 DC output
- 2 Kensington anti-theft lock
- 3 Audio output
- 4 DisplayPort output
- 5 USB fast charger
- 6 USB downstream
- 7 Ethernet
- 8 USB Type C input/Upstream
- 9 Display port input
- 10 HDMI input
- 11 Power Switch
- 12 AC power input

Connect to PC

1. Connect the power cord to the back of the monitor firmly.
2. Turn off your computer and unplug its power cable.
3. Connect the monitor signal cable to the video connector on the back of your computer.

2. Setting up the monitor






Note

If you turn off your monitor via the power switch at any given time, all the USB ports will power OFF.

Warning

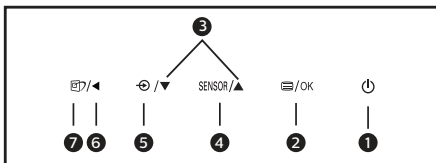
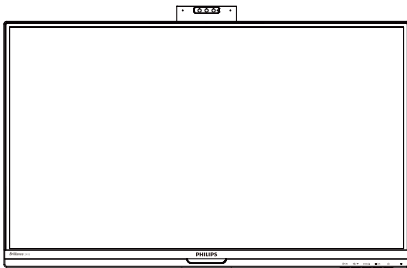
USB 2.4Ghz wireless devices, such as, wireless mouse, keyboard, and headphones, maybe have interference by the high-speed signal of USB3.2 Gen2 devices, which may result in a decreased efficiency of the radio transmission. Should this happen, please try the following methods to help reduce the effects of interference.

- Try to keep USB2.0 receivers away from USB3.2 Gen2 connection port.
- Use a standard USB extension cable or USB hub to increase the space between your wireless receiver and the USB3.2 Gen2 connection port.

| | | |
|---|---|--|
| 2 |  | Access the OSD menu. Confirm the OSD adjustment. |
| 3 |  | Adjust the OSD menu. |
| 4 | SENSOR | PowerSensor |
| 5 |  | Change the signal input source. |
| 6 |  | Return to previous OSD level. |
| 7 |  | SmartImage. There are multiple selections: EasyRead, Office, Photo, Movie, Game, Economy, LowBlue Mode, Off. |

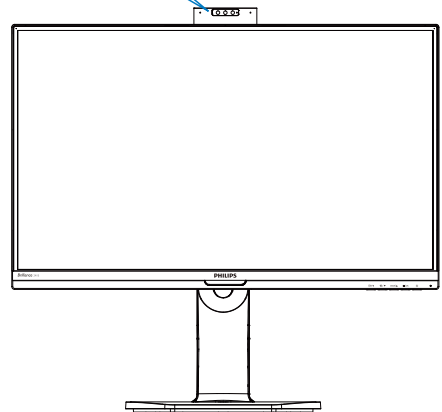
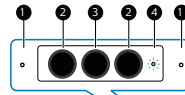
2.2 Operating the monitor

1 Description of the control buttons



| | | |
|---|---|------------------------------------|
| 1 |  | Switch monitor's power ON and OFF. |
|---|---|------------------------------------|

2 Webcam



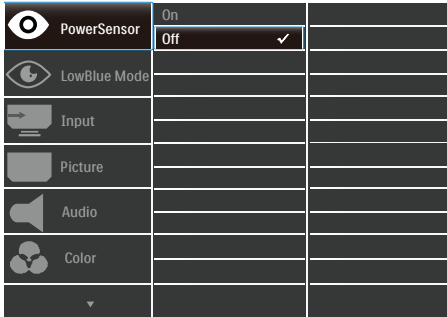
| | |
|---|---------------------------|
| 1 | Microphone |
| 2 | IR of Face identification |
| 3 | 2.0 Megapixel Webcam |
| 4 | Webcam activity light |

2. Setting up the monitor

3 Description of the On Screen Display

What is On-Screen Display (OSD)?

On-Screen Display (OSD) is a feature in all Philips LCD monitors. It allows an end user to adjust screen performance or select functions of the monitors directly through an on-screen instruction window. A user friendly on screen display interface is shown as below:



Basic and simple instruction on the control keys

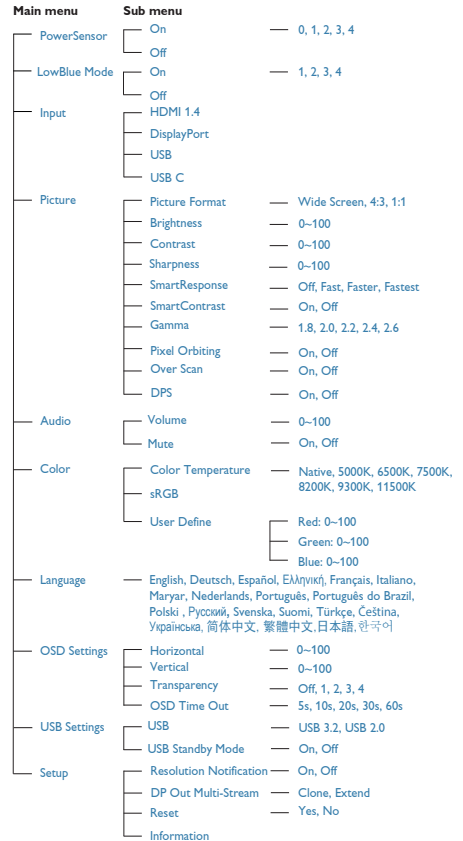
In the OSD shown above, you can press ▼▲ buttons at the front bezel of the monitor to move the cursor, and press **OK** button to confirm the choice or change.

ⓘ Note

This display has "DPS" for ECO design, the default setting is "ON" mode: it makes the screen looks slightly dim; for optimum brightness, enter to the OSD to set "DPS" to "OFF" mode.

The OSD Menu

Below is an overall view of the structure of the On-Screen Display. You can use this as a reference when you want to work your way around the different adjustments later on.



2. Setting up the monitor

4 Resolution notification

This monitor is designed for optimal performance at its native resolution, 1920 × 1080 @ 60 Hz. When the monitor is powered on at a different resolution, an alert is displayed on screen: Use 1920 × 1080 @ 60 Hz for best results.

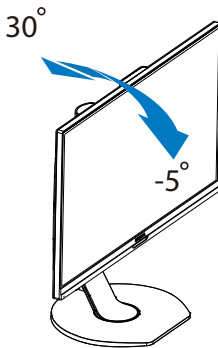
Display of the native resolution alert can be switched off from Setup in the OSD (On Screen Display) menu.

Note

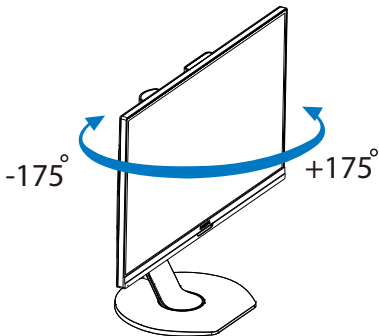
When used as USB monitor, the maximum resolution only support 1920 × 1080 @ 60Hz

5 Physical Function

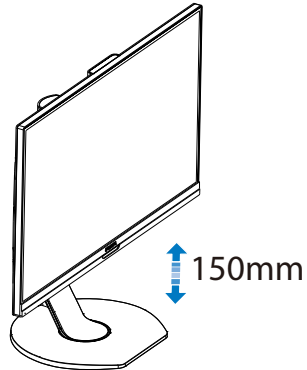
Tilt



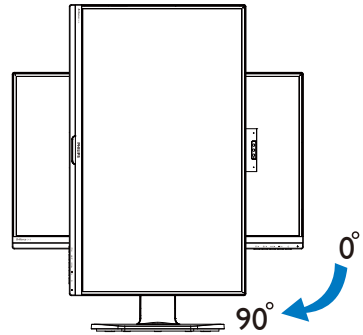
Swivel



Height adjustment



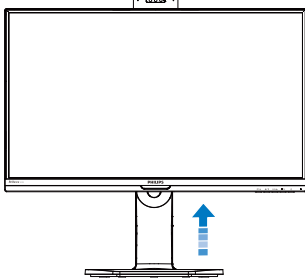
Pivot



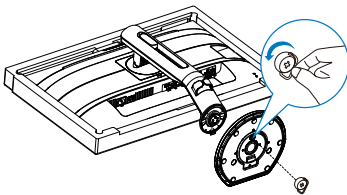
2.3 Remove the Base Assembly for VESA Mounting

Before you start disassembling the monitor base, please follow the instructions below to avoid any possible damage or injury.

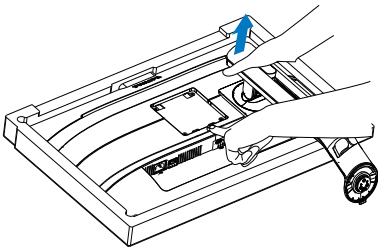
1. Extend the monitor base to its maximum height.



2. Place the monitor face down on a smooth surface. Pay attention not to scratch or damage the screen. Then lift the monitor base.

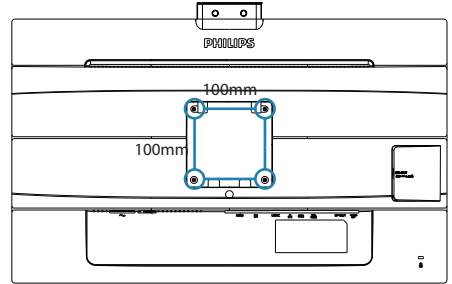


3. While keeping the release button pressed, tilt the stand and slide it out.



Note

This monitor accepts a 100mm x 100mm VESA-Compliant mounting interface. VESA Mounting Screw M4. Always contact manufacturer for wall-mount installation.



3. Built-in Windows Hello™ pop-up webcam

1 What is it?

Phillips' innovative and secure webcam pops up when you need it and securely tucks back into the monitor when you are not using it. The webcam is also equipped with advanced sensors for Windows Hello facial recognition, which conveniently logs you into your Windows devices in less than 2 seconds, 3 times faster than a password.

2 How to enable Windows Hello™ pop-up webcam?

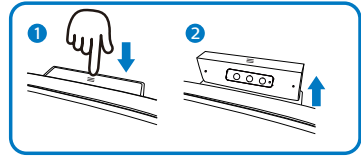
Phillips monitor with Windows Hello webcam can be enabled by simply connecting your USB cable from your PC to the “USB C” port or “USB up” port of this monitor. Now, the webcam with Windows Hello is ready to work as long as the Windows Hello setting in Windows10 is complete. Refer to Windows official website for the settings: <https://www.windowscentral.com/how-set-windows-hello-windows-10>

Please note that Windows 10 system is required for setting up Windows Hello: facial recognition; with an edition lower than Windows 10 or Mac OS, the webcam can work without the function of facial recognition. With Windows7 the driver is required to activate this webcam.

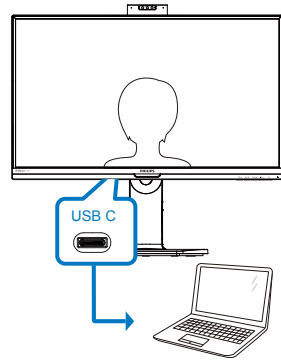
| Operating System | Webcam | Windows hello |
|------------------|--------|---------------|
| Win7 | Yes | No |
| Win8 | Yes | No |
| Win8.1 | Yes | No |
| Win10 | Yes | Yes |

Please follow the steps for the setting:

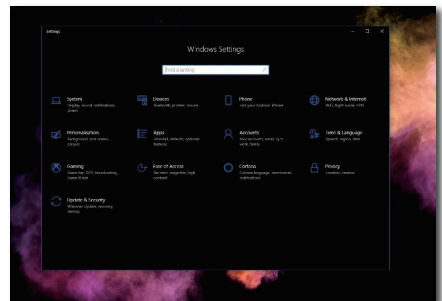
1. Press the built-in webcam in the middle on the top of this display.



2. Simply connect the USB cable from your PC to the “USB C” port of this monitor.



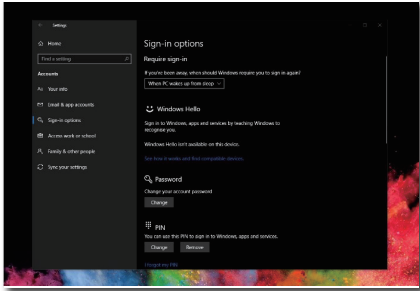
3. Setting in Windows 10 for Windows Hello.
 - a. In the settings app click on accounts.



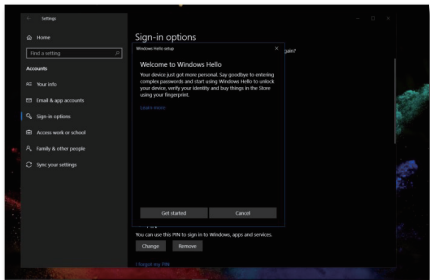
- b. Click on sign-in options in the sidebar.
- c. You need to set up a PIN code before you're allowed to use

3. Built-in Windows Hello™ pop-up webcam

Windows Hello. Once you've added this, the option for Hello will unlock.



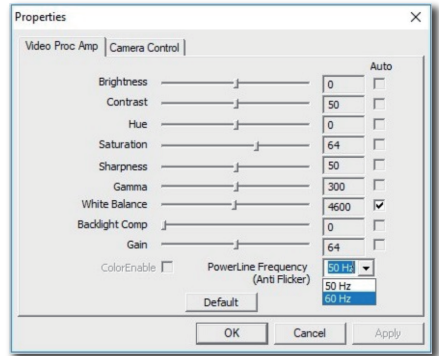
d. You'll now see which options are available to set up under Windows Hello.



e. Click on "Get started." The setting is complete.

⊖ Note

1. Please always go to Windows official website to access the latest information, the information in EDFU is subject to change without further notice.
2. Different regions have different voltages, with inconsistent voltage setting may cause water ripple when using this webcam. Please make the voltage setting same as the voltage of your region.



4. USB docking display introduction

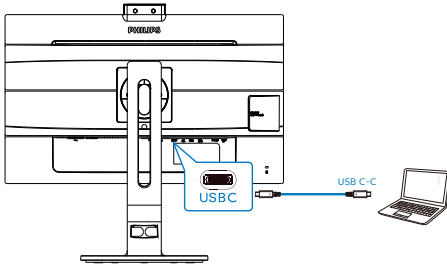
Philips USB-docking monitors deliver universal port replication, for a simple, clutter-free, notebook connection.

Securely connect to networks, transmit data, video and audio from laptop only using a single USB cable.

Even more, dock with USB Type-C port for extra power delivery. For docking monitors with built-in DisplayLink Technology, users can benefit from forward and backwards compatibility of USB with virtually any latest notebook.

4.1 How to operate USB docking display through USB C to C cable?

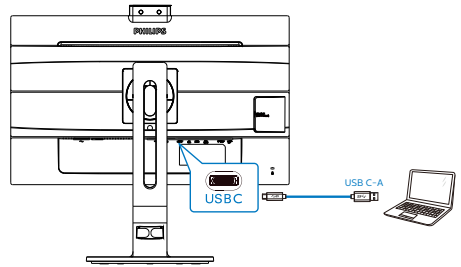
Simply connect USB C to C cable between monitor and laptop. It can transmit video, audio, data, network, power through USB C cable.



Note
Ensure your source device compatible DP Alt Mode over the USB type C to C cable.

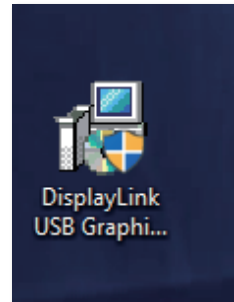
4.2 How to operate USB docking display through USB C to A cable?

1 If your laptop doesn't have USB C port, please connect USB C to A cable between this monitor and laptop, waiting for a couple of minutes, it will automatically install the DisplayLink Software, the premise is that the network must be connected from your devices. You can also install DisplayLink software through below steps.



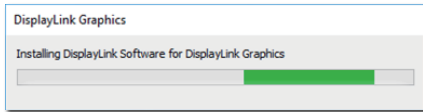
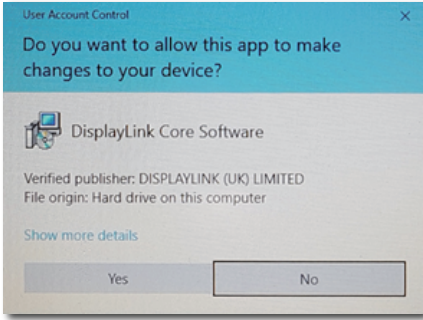
DisplayLink installation procedure:

1. Double click Setup.exe file which is available in CD disk or Philips website, supporting pages.

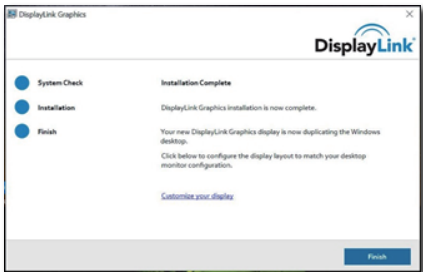
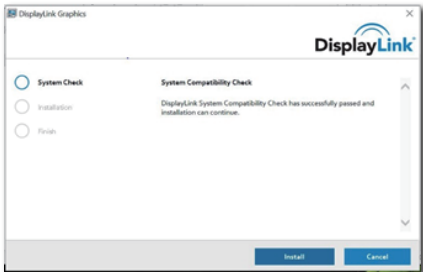


2. User Account Control panel will pop out, click "Yes" to install DisplayLink software for DisplayLink Graphics.

4. USB docking display introduction

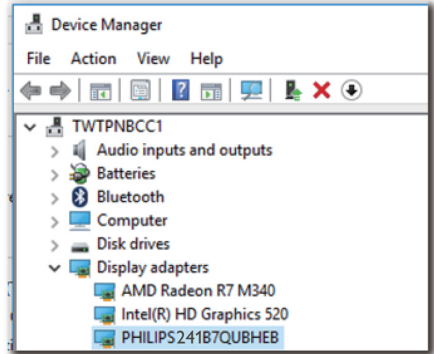


3. Click "Install", then DisplayLink start to install, once it complete, click "Finish"



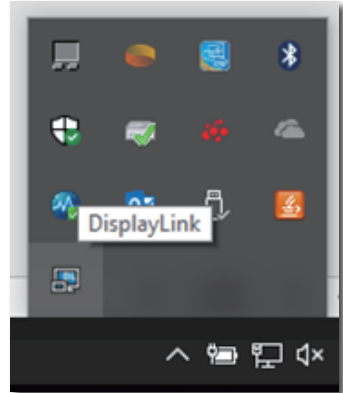
4. After the installation has completed, your laptop will be required to reboot in order to start using the USB docking display. To verify the installation, check to the Display adapters from your

system, the name of the monitor will be shown, it means the DisplayLink software installation is successful.



- 2 Controlling the display

After the DisplayLink software is installed completely, an icon appears in the taskbar. This gives you access to the DisplayLink manager menu.

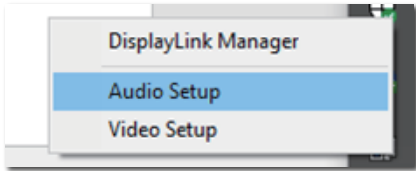


4. USB docking display introduction

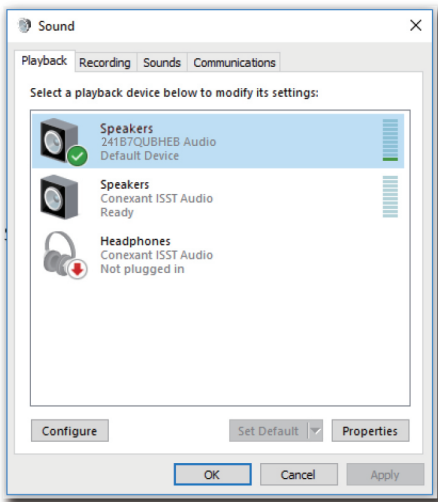
3 Setting Audio source

Once USB C to A cable connects between the monitor and the device, this USB docking monitor audio becomes the default sound track output.

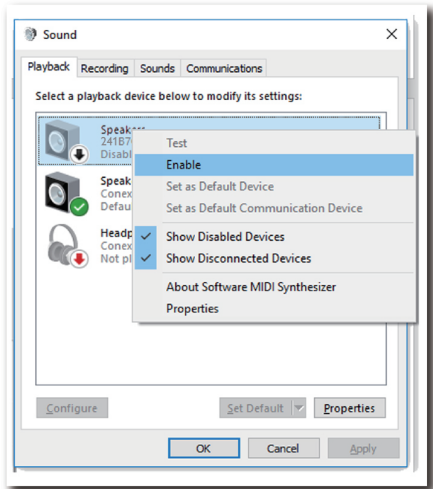
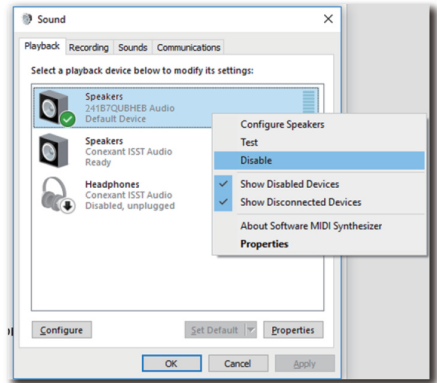
1. Click on the DisplayLink  icon, then, click “Audio Setup”



2. Sound panel pop out, it shows the default sound track is from this docking display.

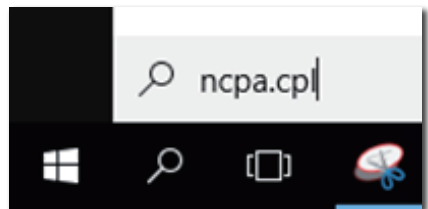


3. To change the sound output source, right click on the audio default device, click “Disable” then, it will switch to the next sound output device, if you want to switch it back, right click on the source, click “Enable”



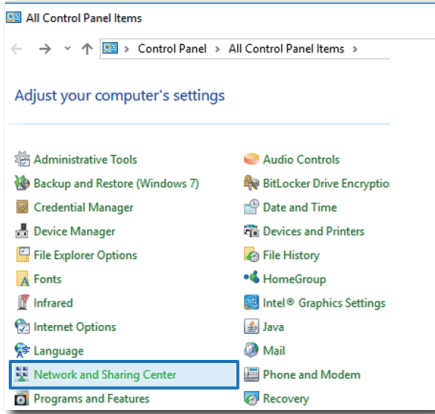
4 Setting USB docking Ethernet

1. Open “Network Connections” window, type “ncpa.cpl” into the Start menu search box:

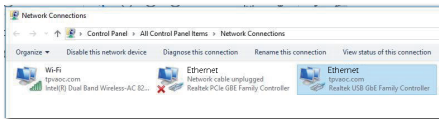


Or enter Control Panel, select “Network and Sharing Center”

4. USB docking display introduction



2. The Network Connections window opens. Locate and select the "Realtek USB GbE Family Controller" for preferred network source.

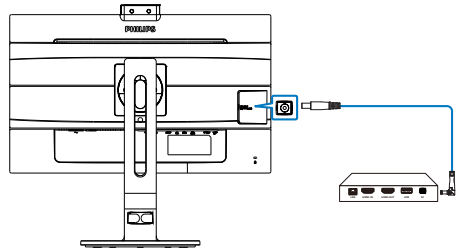


3. Right click on the Realtek USB GbE Family Controller icon and click "Enable", now you can surf the internet.

5 Power delivery

This Philips monitor built-in DC OUT connector for Power delivering to your device up to 65W .

To charge your devices, simply connect DC power cable from this monitor to your devices.



Note

1. The monitor provides power from the DC OUT port at 19V with a maximum of 65W which supports Intel NUC mini PC and other compatible devices.
2. When both the USB-C and the DC OUT port are used simultaneously for delivering power, the USB-C will be limited to 10W of power and the DC OUT port limited to 65W of power. It is recommended to only use one of these ports for charging at a time, to avoid the power limitation.
3. DP out is invalid when DisplayLink is running.

5. Image Optimization

5.1 SmartImage

1 What is it?

SmartImage provides presets that optimize display for different types of content, dynamically adjusting brightness, contrast, color and sharpness in real time. Whether you're working with text applications, displaying images or watching a video, Philips SmartImage delivers great optimized monitor performance.

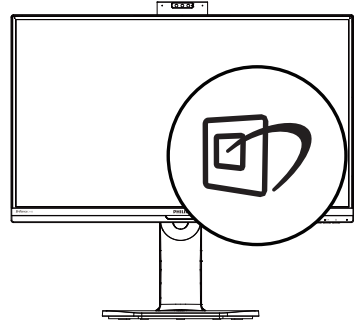
2 Why do I need it?




You want a monitor that delivers optimized display all your favorite types of content, SmartImage software dynamically adjust brightness, contrast, color and sharpness in real time to enhance your monitor viewing experience.

3 How does it work?

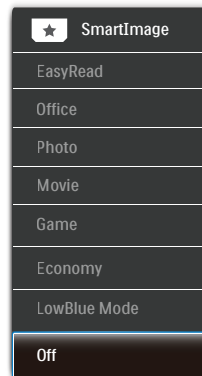
SmartImage is an exclusive, leading edge Philips technology that analyzes the content displayed on your screen. Based on a scenario you select, SmartImage dynamically enhances the contrast, color saturation and sharpness of images to enhance the contents being displayed - all in real time with the press of a single button.

4 How to enable SmartImage?



1. Press  to launch the SmartImage on screen display.
2. Keep pressing   to toggle among EasyRead, Office, Photo, Movie, Game, Economy, LowBlue Mode and Off.
3. The SmartImage on screen display will remain on screen for 5 seconds, or you can also press "OK" to make confirmation.



There are multiple selections: EasyRead, Office, Photo, Movie, Game, Economy, LowBlue Mode and Off.



5. Image Optimization

- **EasyRead:** Helps improve reading of text based application like PDF ebooks. By using a special algorithm which increases the contrast and boundary sharpness of text content, the display is optimized for a stress-free reading by adjusting the brightness, contrast and color temperature of the monitor.
- **Office:** Enhances text and dampens brightness to increase readability and reduce eye strain. This mode significantly enhances readability and productivity when you're working with spreadsheets, PDF files, scanned articles or other general office applications.
- **Photo:** This profile combines color saturation, dynamic contrast and sharpness enhancement to display photos and other images with outstanding clarity in vibrant colors - all without artifacts and faded colors.
- **Movie:** Ramped up luminance, deepened color saturation, dynamic contrast and razor sharpness displays every details in darker areas of your videos without color washout in brighter areas maintaining a dynamic natural values for the ultimate video display.
- **Game:** Turn on over drive circuit for best response time, reduce jaggy edges for fast moving objects on screen, enhance contrast ratio for bright and dark scheme, this profile delivers the best gaming experience for gamers.
- **Economy:** Under this profile, brightness, contrast are adjusted and backlighting finetuned for just right display of everyday office applications and lower power consumption.
- **LowBlue Mode:** LowBlue Mode for easy on-the-eyes productivity. Studies have shown that just as ultra-violet rays can cause eye damage, shortwave length blue light rays from LED displays can cause eye damage and affect vision over time. Developed for wellbeing, Philips LowBlue Mode setting uses a smart software technology to reduce harmful shortwave blue light.
- **Off:** No optimization by SmartImage.

Note

Philips LowBlue mode, mode 2 compliance with TUV Low Blue Light certification, you can have this mode by simply press the hotkey , then press  to select LowBlue Mode, see above SmartImage selection steps.

5.2 SmartContrast

1 What is it?

Unique technology that dynamically analyzes displayed content and automatically optimizes a Monitor's contrast ratio for maximum visual clarity and viewing enjoyment, stepping up backlighting for clearer, crisper and brighter images or dimming backlighting for clear display of images on dark backgrounds.

2 Why do I need it?

You want the very best visual clarity and viewing comfort for every type of content. SmartContrast dynamically controls contrast and adjusts backlighting for clear, crisp, bright gaming and video images or displays clear, readable text for office work. By reducing your monitor's power consumption, you save on energy costs and extend the lifetime of your monitor.

3 How does it work?

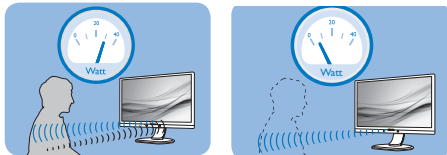
When you activate SmartContrast, it will analyse the content you are displaying in real time to adjust colors and control backlight intensity. This function will dynamically enhance contrast for a great entertainment experience when viewing videos or playing games.

6. PowerSensor™

1 How does it work?

- PowerSensor works on principle of transmission and reception of harmless “infrared” signals in order to detect user-presence.
- When the user is in front of the monitor, the monitor operates normally, at the predetermined settings that the user has set- i.e. brightness, contrast, color, etc
- Assuming that the monitor was set to 100% of brightness for example, when the user leaves his seat and is no longer in front of the monitor, the monitor automatically reduces the power consumption upto 80%.

User present in front User not present



Power consumption as illustrated above is for reference purpose only

2 Setting

Default settings

PowerSensor is designed to detect the presence of the user located between 30 and 100 cm (12 and 40 inches) from the display and within five degrees left or right of the monitor.

Custom settings

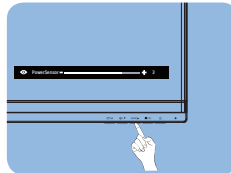
If you prefer to be in a position outside the perimeters listed above, choose a higher strength signal for optimal detection efficiency: The higher the setting, the stronger the detection signal. For maximum PowerSensor efficiency and proper detection, please position yourself directly in front of your monitor.

- If you choose to position yourself more than 100 cm or 40 inches from the monitor use the maximum

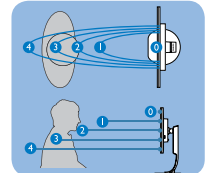
detection signal for distances up to 120 cm or 47 inches. (Setting 4)

- Since some dark colored clothing tends to absorb infrared signals even when the user is within 100 cm or 40 inches of the display, step up signal strength when wearing black or other dark clothes.

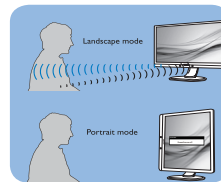
Hot key



Sensor distance



Landscape/Portrait mode



Above illustrations are for reference purpose only, may not reflect the exact display of this model.

3 How to adjust settings

If PowerSensor is not operating correctly inside or outside the default range, here's how to fine-tune detection:

- Press the PowerSensor hot key.
- You will find the adjustment bar.
- Adjust the PowerSensor detection adjustment to Setting 4 and press OK.
- Test the new setup to see if PowerSensor properly detects you in your current position.
- PowerSensor function is designed to work in Landscape mode (horizontal position) only. After PowerSensor turn on it, it will automatically turn Off if the monitor is used in Portrait mode (90 degree/vertical position); it will automatically turn ON if monitor is

returned to its default Landscape position.

 Note

A manually selected PowerSensor mode will remain operational unless and until it is readjusted or the default mode is recalled. If you find that the PowerSensor is excessively sensitive to nearby motion for some reason, please adjust to a lower signal strength. Keep sensor lens clean, if the sensor lens is dirty, wipe it with alcohol to avoid reducing of distance detection .

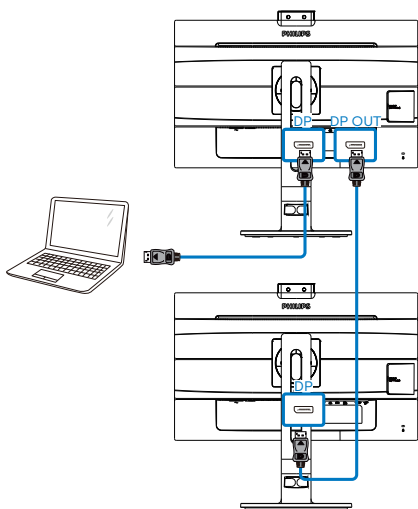
7. Daisy-chain function

Daisy-chain enables multiple monitor connections

This Philips display is equipped with DisplayPort 1.2 interface which enables daisy-chaining to multiple displays. Now you can daisy chain and use multiple monitors via a single cable from one display to the next.

How to daisy chain display

- Connect DisplayPort cable to DP port from laptop
- To daisy chain to the 2nd display, connect DisplayPort cable to DP port from the first display DP out port
- Repeat above steps, you can daisy chain multiple displays
- Refer below table for the numbers of multiple display chaining




Note

1. Depending on the capabilities of your graphic cards, you should be able to daisy chain multiple displays with various configurations. Your display configurations will depend on your graphic card capabilities. Please check with your graphic card vendor and always update your graphic card driver.
2. There are two modes available when you daisy chaining: “Clone” and “Extend”, enter the following OSD manual path for the selection: OSD / Setup / DP Out Multi-Stream / Clone, Extend.
3. When you daisy-chaining to multiple displays, we recommend that you enter to the OSD manual to set USB to USB 2.0 for optimal resolution, the USB3.2 Gen2 may result in reduced resolution.

| | | |
|--------------|-------------------------|--------|
| Language | Resolution Notification | Clone |
| | DP Out Multi-Stream | Extend |
| OSD Settings | Reset | |
| | Information | |
| USB Settings | | |
| Setup | | |
| | | |
| | | |
| | | |
| | | |
| | | |
| | | |
| | | |
| | | |
| | | |

| | |
|-------------------------------------|---|
| Display Resolution (standard 60 Hz) | Maximum number of display chaining (including 1st motherboard connection display) |
| | Extend mode (DP1.2) |
| 1920 x 1080 (1080p) or 1920 x 1200 | 4 |

8. Technical Specifications

| Picture/Display | |
|-----------------------|--|
| Monitor Panel Type | IPS Technology |
| Backlight | LED |
| Panel Size | 23.8" W (60.5 cm) |
| Aspect Ratio | 16:9 |
| Pixel Pitch | 0.275(H) mm x 0.275(V) mm |
| Contrast Ratio (typ.) | 1,000:1 |
| Optimum Resolution | 1920 × 1080 @ 60 Hz |
| Viewing Angle | 178° (H) / 178° (V) @ C/R > 10 |
| Display Colors | 16.7 M |
| Flicker Free | Yes |
| Picture Enhancement | SmartImage |
| Vertical Refresh Rate | 30 Hz - 85 Hz |
| Horizontal Frequency | 48 kHz - 75 kHz |
| sRGB | Yes |
| LowBlue Mode | Yes |
| EasyRead | Yes |
| Connectivity | |
| Signal Input/Output | HDMI 1.4(Digital), DisplayPort 1.2, DisplayPort Out |
| USB | USB-C3.2 Gen2 x 1 (upstream, DP Alt mode, Power Delivery up to 65W, data transmit) USB3.2 Gen2 x 4 (downstream, 1 w/fast charging) |
| USB C-Power Delivery | USB C(up to 65W) (5V/3A, 9V/3A, 10V/3A, 12V/3A, 15V/3A, 20V/3.25A) |
| Input Signal | Separate Sync, Sync on Green |
| Audio In/Out | Audio out |
| RJ45 | Yes, through USB C port Ethernet LAN (10M/100M/1G) |
| DC output | DC output x 1 (support 19V/3.42A, max 65W) |
| USB C docking | |
| USB-C | Reversible plug connector |
| Super speed | Data and Video transfer |
| DP | Built-in DisplayPort Alt mode |
| Power Delivery | USB PD version 3.0 |
| Max power delivery | Up to 65W (5V/3A, 9V/3A, 10V/3A, 12V/3A, 15V/3A, 20V/3.25A) |
| Convenience | |
| Built-in speaker | 2 W x 2 |
| User Convenience |  |
| Built-in Webcam | 2.0 megapixel camera with microphone and LED indicator (for Windows 10 Hello) |

8. Technical Specifications

| | | | |
|--------------------------------|---|-----------------------------------|-----------------------------------|
| OSD Languages | English, German, Spanish, Greek, French, Italian, Hungarian, Dutch, Portuguese, Brazil Portuguese, Polish, Russian, Swedish, Finnish, Turkish, Czech, Ukranian, Simplified Chinese, Traditional Chinese, Japanese, Korean | | |
| Other Convenience | VESA mount(100×100mm), Kensington Lock | | |
| Plug & Play Compatibility | DDC/CI, sRGB, Windows 10/8.1/8/7, Mac OS X | | |
| Stand | | | |
| Tilt | -5 / +30 degree | | |
| Swivel | -175 / +175 degree | | |
| Height adjustment | 150mm | | |
| Pivot | 90 degree | | |
| Power | | | |
| Consumption | AC Input Voltage at 100VAC , 60Hz | AC Input Voltage at 115VAC , 60Hz | AC Input Voltage at 230VAC, 50Hz |
| Normal Operation | 22.51W (typ.) | 22.52W (typ.) | 22.11W (typ.) |
| Sleep (Standby) | <0.5W | <0.5W | <0.5W |
| Off | <0.3W | <0.3W | <0.3W |
| Off (AC switch) | 0 W | 0 W | 0 W |
| Heat Dissipation* | AC Input Voltage at 100VAC , 60Hz | AC Input Voltage at 115VAC , 60Hz | AC Input Voltage at 230VAC , 50Hz |
| Normal Operation | 76.83 BTU/hr (typ.) | 76.85 BTU/hr (typ.) | 75.48 BTU/hr (typ.) |
| Sleep (Standby) | <1.71 BTU/hr | <1.71 BTU/hr | <1.71 BTU/hr |
| Off | <1.02 BTU/hr | <1.02 BTU/hr | <1.02 BTU/hr |
| Off (AC switch) | 0 BTU/hr | 0 BTU/hr | 0 BTU/hr |
| On Mode(ECO mode) | 13.7W (typ.) | | |
| PowerSensor | 4.5W (typ.) | | |
| Power LED indicator | On mode: White, Standby/Sleep mode: White (blinking) | | |
| Power Supply | Built-in, 100-240V AC, 50-60Hz | | |
| Dimensions | | | |
| Product with stand (WxHxD) | 541 x 527 x 257 mm | | |
| Product without stand (WxHxD) | 541 x 332 x 57 mm | | |
| Product with packaging (WxHxD) | 603 x 492 x 224 mm | | |
| Weight | | | |
| Product with stand | 6.30 kg | | |
| Product without stand | 3.87 kg | | |
| Product with packaging | 8.99 kg | | |

8. Technical Specifications

| Operating Condition | |
|--------------------------------------|--|
| Temperature range (operation) | 0°C to 40 °C |
| Relative humidity (operation) | 20% to 80% |
| Atmospheric pressure (operation) | 700 to 1060hPa |
| Temperature range (Non-operation) | -20°C to 60°C |
| Relative humidity (Non-operation) | 10% to 90% |
| Atmospheric pressure (Non-operation) | 500 to 1060hPa |
| Environmental and energy | |
| ROHS | YES |
| EPEAT | YES (Refer to note 1 for more details) |
| Packaging | 100% recyclable |
| Specific Substances | 100% PVC BFR free housing |
| EnergyStar | YES |
| Compliance and standards | |
| Regulatory Approvals | CE Mark, FCC Class B, SEMKO, cETLus, CU-EAC, TCO Edge, TUV-GS, TUV-ERGO, EPA, WEEE, UKRAINIAN, ICES-003, CCC, CECP, PSB, CEL, CB, RCM, SASO, KUCAS |
| Cabinet | |
| Color | Black |
| Finish | Texture |

Note

1. EPEAT Gold or Silver is valid only where Philips registers the product. Please visit www.epeat.net for registration status in your country.
2. This data is subject to change without notice. Go to www.philips.com/support to download the latest version of leaflet.
3. To enable USB docking, USB C-C or USB A-C (when your data transmission is through HDMI/DP) cable is required.

8.1 Resolution & Preset Modes

- 1** Maximum Resolution
1920 × 1080 @ 75 Hz (digital input)
- 2** Recommended Resolution
1920 × 1080 @ 60 Hz (digital input)

| H. freq (kHz) | Resolution | V. freq (Hz) |
|---------------|-------------|--------------|
| 31.47 | 720 × 400 | 70.09 |
| 31.47 | 640 × 480 | 59.94 |
| 35.00 | 640 × 480 | 66.67 |
| 37.86 | 640 × 480 | 72.81 |
| 37.50 | 640 × 480 | 75.00 |
| 35.16 | 800 × 600 | 56.25 |
| 37.88 | 800 × 600 | 60.32 |
| 46.88 | 800 × 600 | 75.00 |
| 48.08 | 800 × 600 | 72.19 |
| 47.73 | 832 × 624 | 74.55 |
| 48.36 | 1024 × 768 | 60.00 |
| 56.48 | 1024 × 768 | 70.07 |
| 60.02 | 1024 × 768 | 75.03 |
| 44.77 | 1280 × 720 | 59.86 |
| 60 | 1280 × 960 | 60 |
| 63.89 | 1280 × 1024 | 60.02 |
| 79.98 | 1280 × 1024 | 75.03 |
| 55.94 | 1440 × 900 | 59.89 |
| 65.29 | 1680 × 1050 | 59.95 |
| 67.50 | 1920 × 1080 | 60.00 |
| 83.89 | 1920 × 1080 | 74.97 |

Note

Please notice that your display works best at native resolution of 1920 × 1080 @ 60Hz. For best display quality, please follow this resolution recommendation.

3 Display Link USB Monitor Support Timing

| H. freq (kHz) | Resolution | V. freq (Hz) |
|---------------|----------------------|--------------|
| 31.47 | 720 × 400/70 | 70.09 |
| 31.47 | 640 × 480/60 | 59.94 |
| 35.00 | 640 × 480/67 | 66.67 |
| 37.86 | 640 × 480/72 | 72.81 |
| 37.50 | 640 × 480/75 | 75.00 |
| 35.16 | 800 × 600/56 | 56.25 |
| 37.88 | 800 × 600/60 | 60.32 |
| 48.08 | 800 × 600/72 | 72.19 |
| 46.88 | 800 × 600/75 | 75.00 |
| 47.73 | 832 × 624/75 | 74.55 |
| 48.36 | 1024 × 768/60 | 60.00 |
| 56.48 | 1024 × 768/70 | 70.07 |
| 60.02 | 1024 × 768/75 | 75.03 |
| 67.50 | 1152 × 864/75 | 75.00 |
| 68.68 | 1152 × 870/75 | 75.06 |
| 44.77 | 1280 × 720/60 | 59.86 |
| 47.78 | 1280 × 768/60 | 59.87 |
| 60.29 | 1280 × 768/75 | 74.89 |
| 49.70 | 1280 × 800/60 | 59.81 |
| 60.00 | 1280 × 960/60 | 60.00 |
| 63.89 | 1280 × 1024/60 | 60.02 |
| 79.98 | 1280 × 1024/75 | 75.03 |
| 55.47 | 1440 × 900/60_ RB | 59.90 |
| 55.94 | 1440 × 900/60 | 59.89 |
| 75.00 | 1600 × 1200/60 | 60.00 |
| 65.29 | 1680 × 1050/60 | 59.95 |
| 67.50 | 1920 × 1080/60 | 60.00 |

9. Power Management

If you have VESA DPM compliance display card or software installed in your PC, the monitor can automatically reduce its power consumption when not in use. If an input from a keyboard, mouse or other input device is detected, the monitor will 'wake up' automatically. The following table shows the power consumption and signaling of this automatic power saving feature:

| Power Management Definition | | | | | |
|-----------------------------|-------|--------|--------|-----------------------------|---------------|
| VESA Mode | Video | H-sync | V-sync | Power Used | LED Color |
| Active | ON | Yes | Yes | 22.5W (typ.) 185W (max.) | White |
| Sleep (Standby) | OFF | No | No | 0.5W (typ.) | White (blink) |
| Switch Off | OFF | - | - | 0W (typ.) | OFF |

The following setup is used to measure power consumption on this monitor.

- Native resolution: 1920 × 1080
- Contrast: 50%
- Brightness: 90%
- Color temperature: 6500k with full white pattern

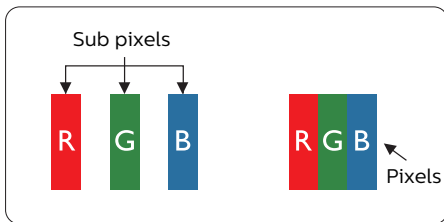
Note

This data is subject to change without notice.

10. Customer care and warranty

10.1 Philips' Flat Panel Monitors Pixel Defect Policy

Philips strives to deliver the highest quality products. We use some of the industry's most advanced manufacturing processes and practice stringent quality control. However, pixel or sub pixel defects on the TFT Monitor panels used in flat panel monitors are sometimes unavoidable. No manufacturer can guarantee that all panels will be free from pixel defects, but Philips guarantees that any monitor with an unacceptable number of defects will be repaired or replaced under warranty. This notice explains the different types of pixel defects and defines acceptable defect levels for each type. In order to qualify for repair or replacement under warranty, the number of pixel defects on a TFT Monitor panel must exceed these acceptable levels. For example, no more than 0.0004% of the sub pixels on a monitor may be defective. Furthermore, Philips sets even higher quality standards for certain types or combinations of pixel defects that are more noticeable than others. This policy is valid worldwide.



Pixels and Sub pixels

A pixel, or picture element, is composed of three sub pixels in the primary colors

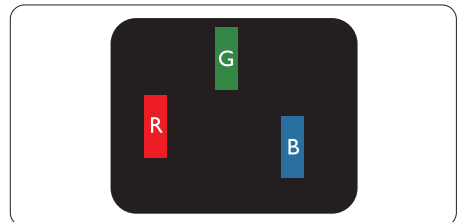
of red, green and blue. Many pixels together form an image. When all sub pixels of a pixel are lit, the three colored sub pixels together appear as a single white pixel. When all are dark, the three colored sub pixels together appear as a single black pixel. Other combinations of lit and dark sub pixels appear as single pixels of other colors.

Types of Pixel Defects

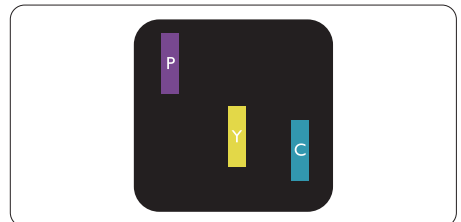
Pixel and sub pixel defects appear on the screen in different ways. There are two categories of pixel defects and several types of sub pixel defects within each category.

Bright Dot Defects

Bright dot defects appear as pixels or sub pixels that are always lit or 'on'. That is, a bright dot is a sub-pixel that stands out on the screen when the monitor displays a dark pattern. There are the types of bright dot defects.

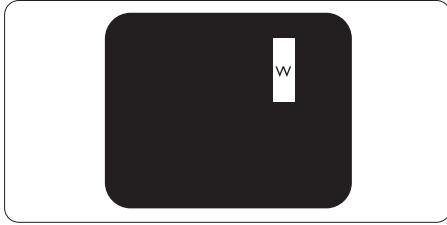


One lit red, green or blue sub pixel.



Two adjacent lit sub pixels:

- Red + Blue = Purple
- Red + Green = Yellow
- Green + Blue = Cyan (Light Blue)



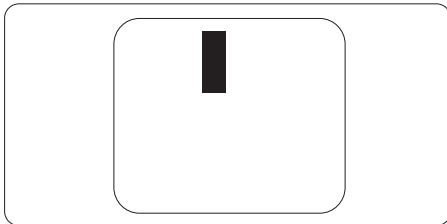
Three adjacent lit sub pixels (one white pixel).

Note

A red or blue bright dot must be more than 50 percent brighter than neighboring dots while a green bright dot is 30 percent brighter than neighboring dots.

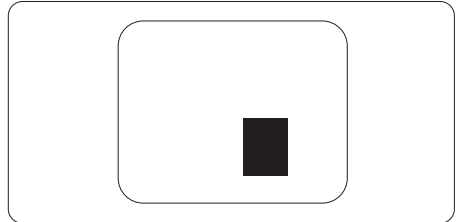
Black Dot Defects

Black dot defects appear as pixels or sub pixels that are always dark or 'off'. That is, a dark dot is a sub-pixel that stands out on the screen when the monitor displays a light pattern. These are the types of black dot defects.



Proximity of Pixel Defects

Because pixel and sub pixels defects of the same type that are near to one another may be more noticeable, Philips also specifies tolerances for the proximity of pixel defects.



Pixel Defect Tolerances

In order to qualify for repair or replacement due to pixel defects during the warranty period, a TFT Monitor panel in a Philips flat panel monitor must have pixel or sub pixel defects exceeding the tolerances listed in the following tables.

| BRIGHT DOT DEFECTS | ACCEPTABLE LEVEL |
|--|-------------------------|
| 1 lit subpixel | 2 |
| 2 adjacent lit subpixels | 1 |
| 3 adjacent lit subpixels (one white pixel) | 0 |
| Distance between two bright dot defects* | >15mm |
| Total bright dot defects of all types | 2 |
| BLACK DOT DEFECTS | ACCEPTABLE LEVEL |
| 1 dark subpixel | 5 or fewer |
| 2 adjacent dark subpixels | 2 or fewer |
| 3 adjacent dark subpixels | 1 |
| Distance between two black dot defects* | >15mm |
| Total black dot defects of all types | 5 or fewer |
| TOTAL DOT DEFECTS | ACCEPTABLE LEVEL |
| Total bright or black dot defects of all types | 5 or fewer |

 **Note**

1 or 2 adjacent sub pixel defects = 1 dot defect.

10.2 Customer Care & Warranty

For warranty coverage information and additional support requirements valid for your region, please visit www.philips.com/support website for details or contact your local Philips Customer Care Center.

For extended warranty, if you would like to extend your general warranty period, an Out of Warranty service package is offered via our Certified Service Center.

If you wish to make use of this service, please be sure to purchase the service within 30 calendar days of your original purchase date. During the extended warranty period, the service includes pickup, repair and return service, however the user will be responsible for all costs accrued.

If the Certified Service Partner cannot perform the required repairs under the offered extended warranty package, we will find alternative solutions for you, if possible, up to the extended warranty period you have purchased.

Please contact our Philips Customer Service Representative or local contact center (by Consumer care number) for more details.

Philips Customer Care Center number listed below.

| • Local Standard Warranty Period | • Extended Warranty Period | • Total Warranty Period |
|----------------------------------|----------------------------|-------------------------------------|
| • Depend on different Regions | • + 1 Year | • Local Standard warranty period +1 |
| | • + 2 Years | • Local Standard warranty period +2 |
| | • + 3 Years | • Local Standard warranty period +3 |

**Proof of original purchase and extended warranty purchase required.

Note

1. Please refer to important information manual for regional service hotline, which is available on the Philips website support page.
2. Spare parts are available for use in the repair of the product for minimum three-year from your original purchase date or 1 year after the end of production, whichever is longer.

11. Troubleshooting & FAQs

11.1 Troubleshooting

This page deals with problems that can be corrected by a user. If the problem still persists after you have tried these solutions, contact Philips customer service representative.

1 Common Problems

No Picture (Power LED not lit)

- Make sure the power cord is plugged into the power outlet and into the back of the monitor.
- First, ensure that the power button on the front of the monitor is in the OFF position, then press it to the ON position.

No Picture (Power LED is White)

- Make sure the computer is turned on.
- Make sure the signal cable is properly connected to your computer.
- Make sure the monitor cable has no bent pins on the connect side. If yes, repair or replace the cable.
- The Energy Saving feature may be activated

Screen says

Check cable connection

- Make sure the monitor cable is properly connected to your computer. (Also refer to the Quick Start Guide).
- Check to see if the monitor cable has bent pins.

- Make sure the computer is turned on.

AUTO button doesn't function

- The auto function is applicable only in VGA-Analog mode. If the result is not satisfactory, you can do manual adjustments via the OSD menu.

Note

The Auto Function is not applicable in DVI-Digital mode as it is not necessary.

Visible signs of smoke or sparks

- Do not perform any troubleshooting steps
- Disconnect the monitor from mains power source immediately for safety
- Contact with Philips customer service representative immediately.

2 Imaging Problems

Image is not centered

- Adjust the image position using the "Auto" function in OSD Main Controls.
- Adjust the image position using the Phase/Clock of Setup in OSD Main Controls. It is valid only in VGA mode.

Image vibrates on the screen

- Check that the signal cable is properly securely connected to the graphics board or PC.

Vertical flicker appears



- Adjust the image using the "Auto" function in OSD Main Controls.
- Eliminate the vertical bars using the Phase/Clock of Setup in OSD Main Controls. It is valid only in VGA mode.

Horizontal flicker appears



- Adjust the image using the “Auto” function in OSD Main Controls.
- Eliminate the vertical bars using the Phase/Clock of Setup in OSD Main Controls. It is valid only in VGA mode.

Image appears blurred, indistinct or too dark

- Adjust the contrast and brightness on On-Screen Display.

An “after-image”, “burn-in” or “ghost image” remains after the power has been turned off.

- Uninterrupted display of still or static images over an extended period may cause “burn in”, also known as “after-imaging” or “ghost imaging”, on your screen. “Burn-in”, “after-imaging”, or “ghost imaging” is a well-known phenomenon in LCD panel technology. In most cases, the “burned in” or “after-imaging” or “ghost imaging” will disappear gradually over a period of time after the power has been switched off.
- Always activate a moving screen saver program when you leave your monitor unattended.
- Always activate a periodic screen refresh application if your LCD monitor will display unchanging static content.
- Failure to activate a screen saver, or a periodic screen refresh application may result in severe “burn-in” or “after-image” or “ghost image” symptoms that will not disappear and cannot be repaired. The damage mentioned above is not covered under your warranty.

Image appears distorted. Text is fuzzy or blurred.

- Set the PC’s display resolution to the same mode as monitor’s recommended screen native resolution.

Green, red, blue, dark, and white dots appears on the screen

- The remaining dots are normal characteristic of the liquid crystal used in today’s technology, Please refer the pixel policy for more detail.

* The “power on” light is too strong and is disturbing

- You can adjust “power on” light using the power LED Setup in OSD main Controls.

For further assistance, refer to the Service contact information listed in Important information manual and contact Philips customer service representative.

* [Functionality different according to display.](#)

11.2 General FAQs

Q1: When I install my monitor what should I do if the screen shows ‘Cannot display this video mode’?

Ans.: Recommended resolution for this monitor: 1920 × 1080 @ 60 Hz.

- Unplug all cables, then connect your PC to the monitor that you used previously.
- In the Windows Start Menu, select Settings/Control Panel. In the Control Panel Window, select the Display icon. Inside the Display Control Panel, select the ‘Settings’ tab. Under the setting tab, in box labelled ‘desktop area’, move the sidebar to 1920 × 1080 pixels.

- Open 'Advanced Properties' and set the Refresh Rate to 60 Hz, then click OK.
- Restart your computer and repeat step 2 and 3 to verify that your PC is set at 1920 × 1080 @ 60 Hz.
- Shut down your computer, disconnect your old monitor and reconnect your Philips LCD monitor.
- Turn on your monitor and then turn on your PC.

Q2: What is the recommended refresh rate for LCD monitor?

Ans.: Recommended refresh rate in LCD monitors is 60 Hz, In case of any disturbance on screen, you can set it up to 75 Hz to see if that removes the disturbance.

Q3: What are the .inf and .icm files on the CD-ROM? How do I install the drivers (.inf and .icm)?

Ans.: These are the driver files for your monitor. Follow the instructions in your user manual to install the drivers. Your computer may ask you for monitor drivers (.inf and .icm files) or a driver disk when you first install your monitor. Follow the instructions to insert the companion CD-ROM included in this package. Monitor drivers (.inf and .icm files) will be installed automatically.

Q4: How do I adjust the resolution?

Ans.: Your video card/graphic driver and monitor together determine the available resolutions. You can select the desired resolution under Windows® Control Panel with the "Display properties".

Q5: What if I get lost when I am making monitor adjustments via OSD?

Ans.: Simply press the OK button, then select 'Reset' to recall all of the original factory settings.

Q6: Is the LCD screen resistant to scratches?

Ans.: In general it is recommended that the panel surface is not subjected to excessive shocks and is protected from sharp or blunt objects. When handling the monitor, make sure that there is no pressure or force applied to the panel surface side. This may affect your warranty conditions.

Q7: How should I clean the LCD surface?

Ans.: For normal cleaning, use a clean, soft cloth. For extensive cleaning, please use isopropyl alcohol. Do not use other solvents such as ethyl alcohol, ethanol, acetone, hexane, etc.

Q8: Can I change the color setting of my monitor?

Ans.: Yes, you can change your color setting through OSD control as the following procedures,

- Press "OK" to show the OSD (On Screen Display) menu
- Press "Down Arrow" to select the option "Color" then press "OK" to enter color setting, there are three settings as below.
 1. Color Temperature: The settings are Native, 5000K, 6500K, 7500K, 8200K, 9300K and 11500K. With settings in the 5000K range the panel appears "warm, with a red-white color tone", while a 11500K temperature yields "cool, bluishwhite toning".

2. sRGB: This is a standard setting for ensuring correct exchange of colors between different device (e.g. digital cameras, monitors, printers, scanners, etc).
3. User Define: The user can choose his/her preference color setting by adjusting red, green blue color.

 **Note**

A measurement of the color of light radiated by an object while it is being heated. This measurement is expressed in terms of absolute scale, (degrees Kelvin). Lower Kelvin temperatures such as 2004K are red; higher temperatures such as 9300K are blue. Neutral temperature is white, at 6504K.

Q9: Can I connect my LCD monitor to any PC, workstation or Mac?

Ans.: Yes. All Philips LCD monitors are fully compatible with standard PCs, Macs and workstations. You may need a cable adapter to connect the monitor to your Mac system. Please contact your Philips sales representative for more information.

Q10: Are Philips LCD monitors Plug-and- Play?

Ans.: Yes, the monitors are Plug-and-Play compatible with Windows 10/8.1/8/7, Mac OSX

Q11: What is Image Sticking, or Image Burn-in, or After Image, or Ghost Image in LCD panels?

Ans.: Uninterrupted display of still or static images over an extended period may cause "burn in", also known as "after-imaging" or "ghost imaging", on your screen. "Burn-in", "after-

imaging", or "ghost imaging" is a well-known phenomenon in LCD panel technology. In most cases, the "burned in" or "after-imaging" or "ghost imaging" will disappear gradually over a period of time after the power has been switched off.

Always activate a moving screen saver program when you leave your monitor unattended.

Always activate a periodic screen refresh application if your LCD monitor will display unchanging static content.


 **Warning**

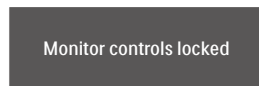
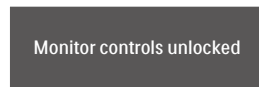
Failure to activate a screen saver, or a periodic screen refresh application may result in severe "burn-in" or "after-image" or "ghost image" symptoms that will not disappear and cannot be repaired. The damage mentioned above is not covered under your warranty.

Q12: Why is my Display not showing sharp text, and is displaying jagged characters?

Ans.: Your LCD monitor works best at its native resolution of 1920 x 1080 @ 60 Hz. For best display, please use this resolution.

Q13: How to unlock/lock my hot key?

Ans.: Please press /OK for 10 seconds to unlock/lock the hot key, by doing so, your monitor pops out "Attention" to show the unlock/lock status as shown below illustrators.



Q14: When I project from my notebook through “USB type C” connector to this display, I cannot see anything on the display?

Ans.: The USB C port of this display is capable of receiving and transferring power, data and video. Please ensure that your notebook/device USB type C connector supports Data transmission and supports DP ALT mode for video output. Please check if you have to enable the functions via your Notebook bios or other software combinations to enable the transmission/reception.

Q15: Why is this monitor not charging my notebook from the USB type C port?

Ans.: The USB C port of this display is capable of giving power output to charge notebooks/device. However, not all notebooks or devices are capable of being charged from USB type C port. Please check if your notebook/device is capable of power charging function. You may have a USB type C port, but it may be limited to only data transmission function. If your notebook/device supports charging function through USB type C port, please make sure that this function is enabled from your system’s bios or other software combination, if required. It is possible that the commercial policy of your notebook/device may require you to purchase their own brand specific power accessories. In that case, it may not recognize and block the Philips USB type C power charging function. This is not a fault of the Philips display.

Please refer to the detailed operation manual of your notebook or device and contact them.

Q16: When I connect USB C-A cable to boost my hub functionality, there’s always pop up a message, how to off show this message?

Ans.: This message is USB Billboard, however your hub functionality is still workable, in order to off show the message, please consult your source device vender.



2019 © TOP Victory Investment Ltd. All rights reserved.

This product has been manufactured by and is sold under the responsibility of Top Victory Investments Ltd., and Top Victory Investments Ltd. is the warrantor in relation to this product. Philips and the Philips Shield Emblem are registered trademarks of Koninklijke Philips N.V. and are used under license.

Specifications are subject to change without notice.

Version: M7241BUHE1L