

Philips
4K Ultra HD LCD monitor

E Line
27" (68.6 cm)
3840 x 2160 (4K UHD)

278E1A



Simply stunning

The 27" E Line monitor features stunning visuals and elegant design for a stylish enhancement to your workspace. Ultra-clear 4K UHD with wide view delivers same the ultimate clarity and lifelike visuals from any front-angle view.

Superb Picture Quality

- IPS LED wide view technology for image and colour accuracy
- UltraClear 4K UHD (3840 x 2160) resolution for precision
- SmartContrast for rich black details
- SmartImage game mode optimised for gamers

Features designed for you

- Cable management reduces cable clutter for a neat workspace
- Less eye fatigue with Flicker-Free technology
- LowBlue Mode for easy-on-the-eyes productivity
- Built-in stereo speakers for multimedia
- HDMI ensures universal digital connectivity
- DisplayPort connection for maximum visuals

Greener every day

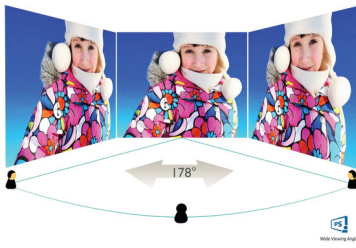
- Eco-friendly materials meet major international standards
- Low power consumption saves energy bills

PHILIPS

4K Ultra HD LCD monitor
E Line 27" (68.6 cm), 3840 x 2160 (4K UHD)

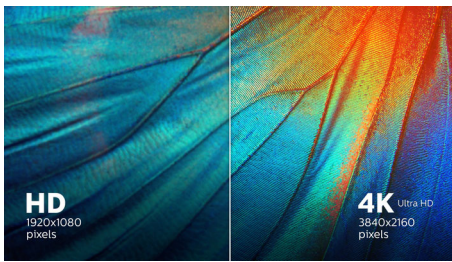
Highlights

IPS technology



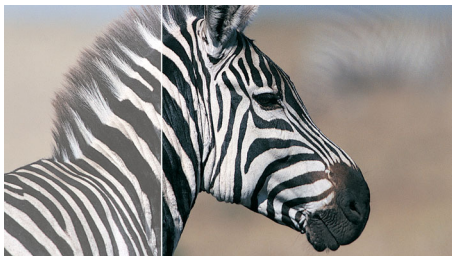
IPS displays use an advanced technology that gives you extra-wide viewing angles of 178/178 degrees, making it possible to view the display from almost any angle. Unlike standard TN panels, IPS displays give you remarkably crisp images with vivid colours, making them ideal not only for Photos, movies and web browsing, but also for professional applications that demand colour accuracy and consistent brightness at all times.

UltraClear 4K UHD Resolution



These Philips displays utilise high-performance panels to deliver UltraClear, 4K UHD (3840 x 2160) resolution images. Whether you are a demanding professional requiring extremely detailed images for CAD solutions, a user of 3D graphics applications or a financial wizard working on huge spreadsheets, Philips displays will make your images and graphics come alive.

SmartContrast



SmartContrast is a Philips technology that analyses the contents you are displaying,

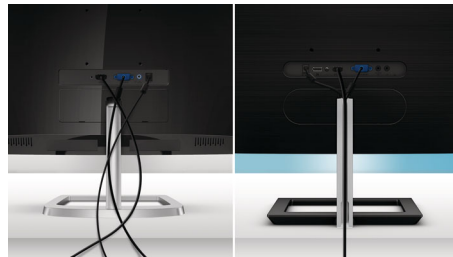
automatically adjusting colours and controlling backlight intensity to dynamically enhance contrast for the best digital images and videos or when playing games where dark hues are displayed. When Economy mode is selected, contrast is adjusted and backlighting fine-tuned for just-right display of everyday office applications and lower power consumption.

SmartImage Game mode



The new Philips gaming display has quick-access OSD fine-tuned for gamers, offering you multiple options. "FPS" mode (First person shooting) improves dark themes in games, allowing you to see hidden objects in dark areas. "Racing" mode adapts the display with the fastest response time and high colour, along with image adjustments. "RTS" mode (Real-time strategy) has a special SmartFrame mode that enables highlighting of specific area and allows for size and image adjustments. Gamer 1 and Gamer 2 enable you to save personal customised settings based on different games, ensuring best performance.

Concealed cables



For a cleaner workspace, this monitor features an elegant solution for cable management. No need to bundle cables with extra ties. An elongated slot provides hidden storage for cables. It conceals cables and looks great in most environments, especially for a small space or a desk facing a wall or a window. This design

278E1A/01

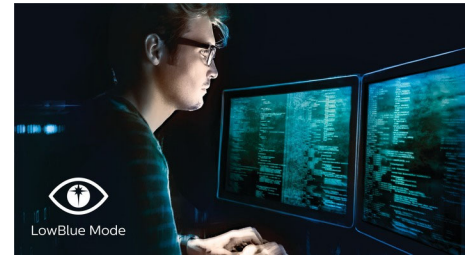
cleans up messy cables for a more organised desk.

Flicker-Free technology



Due to the way brightness is controlled on LED-backlit screens, some users experience flicker on their screen which causes eye fatigue. Philips Flicker-Free technology applies a new solution to regulate brightness and reduce flicker for more comfortable viewing.

LowBlue Mode



Studies have shown that just as ultra-violet rays can cause eye damage, shortwave-length blue light rays from LED displays can cause eye damage and affect vision over time. Developed for wellbeing, the Philips LowBlue Mode setting uses a smart software technology to reduce harmful shortwave blue light.

Built-in stereo speakers



A pair of high-quality stereo speakers built into a display device. They may be visible front firing, or invisible down firing, top firing, rear firing etc. depending on model and design.



Specifications

Picture/Display

- LCD panel type: IPS technology
- Backlight type: W-LED system
- Panel Size: 27 inch/68.6 cm
- Display Screen Coating: Anti-Glare, 3H, Haze 25%
- Effective viewing area: 596.74 (H) x 335.66 (V)
- Aspect ratio: 16:9
- Maximum resolution: 3840 x 2160 @ 60 Hz*
- Pixel Density: 163 PPI
- Response time (typical): 4 ms (Grey to Grey)*
- Brightness: 350 cd/m²
- Contrast ratio (typical): 1000:1
- SmartContrast: Mega Infinity DCR
- Pixel pitch: 0.155 x 0.155 mm
- Viewing angle: 178° (H)/178° (V), @ C/R > 10
- Picture enhancement: SmartImage game
- Colour gamut (typical): NTSC 91%*, sRGB 109%*
- Display colours: Colour support 1.07 billion colours
- Scanning Frequency: 30–83 kHz (H) / 59–61 Hz (V)
- Flicker-free
- LowBlue Mode
- SmartUniformity: 97 ~ 102%
- Delta E: < 2
- sRGB

Connectivity

- Signal Input: DisplayPort x 1, HDMI x 2
- Sync Input: Separate Sync, Sync on Green
- Audio (In/Out): PC audio-in, Earphone out

Convenience

- Built-in Speakers: 3 W x 2
- User convenience: Power On/Off, Menu, Volume, Input, SmartImage Game
- OSD Languages: Brazil Portuguese, Czech, Dutch, English, Finnish, French, German, Greek, Hungarian, Italian, Japanese, Korean, Polish, Portuguese, Russian, Simplified Chinese, Spanish, Swedish, Traditional Chinese, Turkish, Ukrainian
- Other convenience: Kensington lock, VESA mount (100 x 100 mm)
- Plug and Play Compatibility: DDC/CI, Mac OS X, sRGB, Windows 10 / 8.1 / 8 / 7

Stand

- Tilt: -5/20 degree

Power

- On mode: 20.3 W (typ.) (EnergyStar test method)
- Standby mode: < 0.5 W (typ.)
- Off mode: < 0.3 W (typ.)
- Energy Label Class: G
- Power LED indicator: Operation - White, Standby mode - White (flashing)
- Power supply: External, 100–240 VAC, 50–60 Hz

Dimensions

- Product with stand (mm): 613 x 461 x 192 mm
- Product without stand (mm): 613 x 368 x 45 mm
- Packaging in mm (W x H x D): 663 x 519 x 152 mm

Weight

- Product with stand (kg): 4.78 kg
- Product without stand (kg): 4.18 kg
- Product with packaging (kg): 6.84 kg

Operating conditions

- Temperature range (operation): 0 to 40 °C
- Temperature range (storage): -20 to 60 °C
- Relative humidity: 20%-80 %
- Altitude: Operation: +12,000 ft (3658 m), Non-operation: +40,000 ft (12,192 m)
- MTBF: 50,000 hrs (excluding backlight) hour(s)

Sustainability

- Environmental and energy: EnergyStar 8.0, RoHS, Mercury Free
- Recyclable packaging material: 100 %

Compliance and standards

- Regulatory Approvals: CU-EAC, TUV/ISO9241-307, cETLus, CE Mark, FCC Class B, ICES-003, CCC, CECP, TUV-BAUART

Cabinet

- Colour: Black
- Finish: Textured

What's in the box?

- Monitor with stand
- Cables: HDMI cable, Audio cable, Power cable
- User Documentation



Issue date 2022-04-21

Version: 7.0.2

12 NC: 8670 001 60605
EAN: 87 12581 76007 6

© 2022 Koninklijke Philips N.V.
All Rights reserved.

Specifications are subject to change without notice.
Trademarks are the property of Koninklijke Philips N.V.
or their respective owners.

www.philips.com

* "IPS" word mark / trademark and related patents on technologies belong to their respective owners.
* The maximum resolution works for either HDMI input or DP input.
* Response time value equal to SmartResponse
* NTSC Area based on CIE 1976
* sRGB Area based on CIE1931
* The monitor may look different from feature images.