

Philips  
LCD monitor

### V Line

22 (21.5"/54.6 cm diag.)  
1920 x 1080 (Full HD)

221V8LD



## Vivid, crisp images beyond boundaries

Philips V line wide-view monitor gives viewing beyond boundaries and great value with essential features. Adaptive-Sync provides flawless viewing without screen tearing. Features like LowBlue mode and flicker-free make it easy on the eyes.

#### **Vivid pictures every time**

- VA display delivers awesome images with wide viewing angles
- 16:9 Full HD display for crisp, detailed images
- SmartImage pre-sets for easy optimised image settings
- Effortlessly smooth action with Adaptive-Sync technology

#### **Easy on the eyes**

- Less eye fatigue with Flicker-Free technology
- LowBlue Mode for easy-on-the-eyes productivity
- EasyRead mode for a paper-like reading experience

#### **Experience true multimedia**

- HDMI ensures universal digital connectivity

#### **Perfectly designed for your space**

- VESA mount allows for flexibility

# PHILIPS

LCD monitor  
V Line 22 (21.5"/54.6 cm diag.), 1920 x 1080 (Full HD)

221V8LD/00

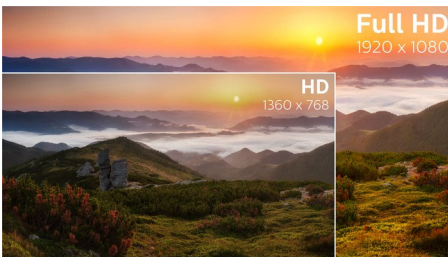
# Highlights

## VA display



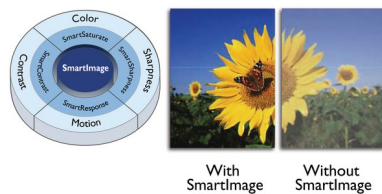
The Philips VA LED display uses an advanced multi-domain vertical alignment technology that gives you super-high static contrast ratios for extra-vivid and bright images. While standard office applications are handled with ease, it is especially suitable for photos, web browsing, films, gaming and demanding graphical applications. Its optimised pixel management technology gives you a 178/178 degree extra-wide viewing angle, resulting in crisp images.

## 16:9 Full HD display



Picture quality matters. Regular displays deliver quality, but you expect more. This display features enhanced Full HD 1920 x 1080 resolution. With Full HD for crisp detail paired with high brightness, incredible contrast and realistic colours, expect a true-to-life picture.

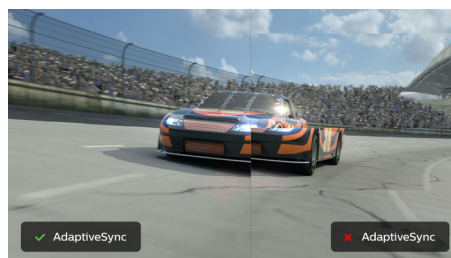
## SmartImage



SmartImage is an exclusive leading edge Philips technology that analyses the content displayed

on your screen and optimises your display performance. This user-friendly interface allows you to select various modes, like Office, Photo, Movie, Game, Economy etc., to fit the application in use. Based on the selection, SmartImage dynamically optimises the contrast, colour saturation and sharpness of images and videos for ultimate display performance. The Economy mode option offers you major power savings. All in real time at the touch of a single button!

## Adaptive-Sync technology



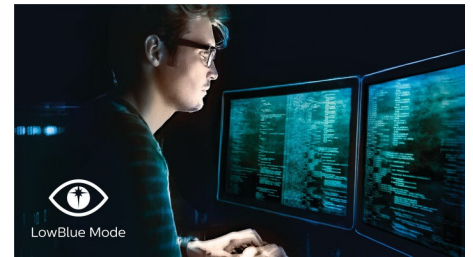
Gaming shouldn't be a choice between choppy gameplay or broken frames. Get fluid, artefact-free performance at virtually any frame rate with Adaptive-Sync technology, smooth quick refresh and ultra-fast response time.

## Flicker-Free technology



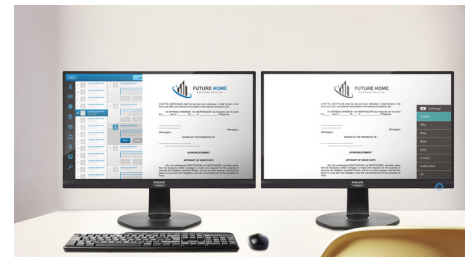
Due to the way brightness is controlled on LED-backlit screens, some users experience flicker on their screen which causes eye fatigue. Philips Flicker-Free technology applies a new solution to regulate brightness and reduce flicker for more comfortable viewing.

## LowBlue Mode



Studies have shown that just as ultra-violet rays can cause eye damage, shortwave-length blue light rays from LED displays can cause eye damage and affect vision over time. Developed for wellbeing, the Philips LowBlue Mode setting uses a smart software technology to reduce harmful shortwave blue light.

## EasyRead mode



EasyRead mode for a paper-like reading experience

## HDMI Ready



An HDMI-ready device has all the required hardware to accept High-Definition Multimedia Interface (HDMI) input. An HDMI cable enables high-quality digital video and audio to be transmitted over a single cable from a PC or any number of AV sources (including set-top boxes, DVD players, A/V receivers and video cameras).



# Specifications

## Picture/Display

- LCD panel type: VA LCD
- Backlight type: W-LED system
- Panel Size: 21.5 inch/54.6 cm
- Display Screen Coating: Anti-glare, 3H, Haze 25%
- Effective viewing area: 478.656 (H) x 260.28 (V)
- Aspect ratio: 16:9
- Maximum resolution: 1920 x 1080 @ 75 Hz\*
- Pixel Density: 102 PPI
- Response time (typical): 4 ms (GtG)\*
- Brightness: 250 cd/m<sup>2</sup>
- Contrast ratio (typical): 3000:1
- SmartContrast: Mega Infinity DCR
- Pixel pitch: 0.2493 x 0.241 mm
- Viewing angle: 178° (H)/178° (V), @ C/R > 10
- Display colours: 16.7 M
- Picture enhancement: SmartImage
- Scanning Frequency: 30–85 kHz (H) / 48–75 Hz (V)
- sRGB
- Flicker-free
- LowBlue Mode
- EasyRead
- Adaptive sync

## Connectivity

- Signal Input: VGA (Analogue), DVI-D (digital, HDCP), HDMI 1.4
- Sync Input: Separate Sync, Sync on Green
- Audio (In/Out): Audio out

## Convenience

- User convenience: Power On/Off, Menu/OK, Brightness/UP, Input/Down, SmartImage/Back
- OSD Languages: Brazil Portuguese, Czech, Dutch, English, Finnish, French, German, Greek, Hungarian, Italian, Japanese, Korean, Polish, Portuguese, Russian, Spanish, Simplified Chinese, Swedish, Turkish, Traditional Chinese, Ukrainian
- Other convenience: Kensington lock, VESA mount (100 x 100 mm)
- Plug and Play Compatibility: DDC/CI, Mac OS X, sRGB, Windows 10 / 8.1 / 8 / 7

## Stand

- Tilt: -5/20 degree

## Power

- On mode: 13.3 W (typ.) (EnergyStar test method)
- Energy Label Class: E
- Standby mode: 0.5 W (typ.)
- Off mode: 0.3 W (typ.)
- Power LED indicator: Operation - White, Standby mode - White (flashing)
- Power supply: Built-in, 100–240 VAC, 50–60 Hz

## Dimensions

- Product with stand (mm): 493 x 369 x 220 mm
- Product without stand (mm): 493 x 286 x 44 mm
- Packaging in mm (W x H x D): 565 x 440 x 111 mm

## Weight

- Product with stand (kg): 2.69 kg
- Product without stand (kg): 2.30 kg
- Product with packaging (kg): 3.73 kg

## Operating conditions

- Temperature range (operation): 0°C to 40°C °C
- Temperature range (storage): -20°C to 60°C °C
- Relative humidity: 20%-80 %
- Altitude: Operation: +12,000 ft (3658 m), Non-operation: +40,000 ft (12,192 m)
- MTBF: 50 000 (Excluded backlight) hour(s)

## Sustainability

- Environmental and energy: EnergyStar 8.0, TCO Certified, RoHS, Mercury Free
- Recyclable packaging material: 100 %

## Compliance and standards

- Regulatory Approvals: CB, UKRAINIAN, TUV/GS, TUV Ergo, CU-EAC, EAEU RoHS, CE Mark

## Cabinet

- Colour: Black
- Finish: Textured

## What's in the box?

- Monitor with stand
- Cables: HDMI cable, Power cable
- User Documentation



Issue date 2022-05-18

Version: 3.0.1

12 NC: 8670 001 70957  
EAN: 87 12581 77171 3

© 2022 Koninklijke Philips N.V.  
All Rights reserved.

Specifications are subject to change without notice.  
Trademarks are the property of Koninklijke Philips N.V.  
or their respective owners.

[www.philips.com](http://www.philips.com)

\* The maximum resolution works for HDMI input only.  
\* Response time value equal to SmartResponse  
\* The monitor may look different from feature images.