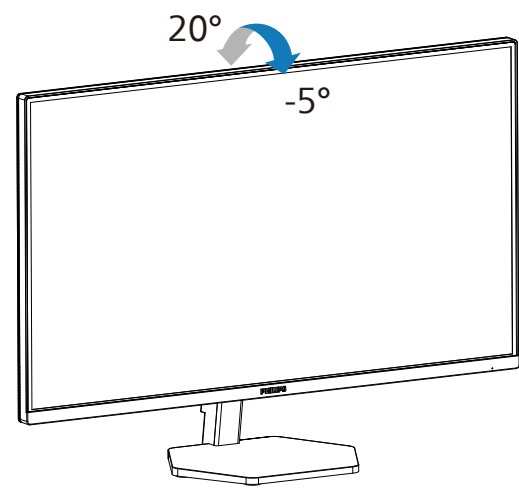
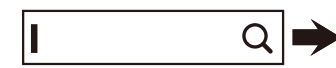


4



Register your product and get support at www.philips.com/support



Version: 32E1N3600Q1T
2022 © TOP Victory Investments Ltd. All rights reserved.

This product has been manufactured by and is sold under the responsibility of Top Victory Investments Ltd., and Top Victory Investments Ltd. is the warrantor in relation to this product. Philips and the Philips Shield Emblem are registered trademarks of Koninklijke Philips N.V. and are used under license.

Specifications are subject to change without notice.

HDMI

The terms HDMI, HDMI High-Definition Multimedia Interface, and the HDMI Logo are trademarks or registered trademarks of HDMI Licensing Administrator, Inc.

www.philips.com

Energy Labelling
32E1N3600LA



Printed in China



Q41G32M1813A07

PHILIPS

Monitor

3000 Series

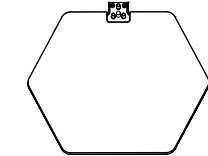
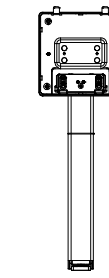
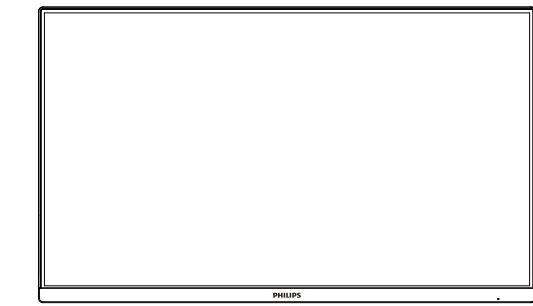


32E1N3600LA

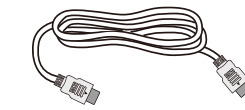
Quick start

Register your product and get support at www.philips.com/welcome

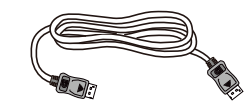
Contents



Power



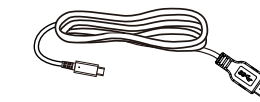
*HDMI



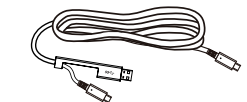
*DP



*USB C-C



*USB C-A

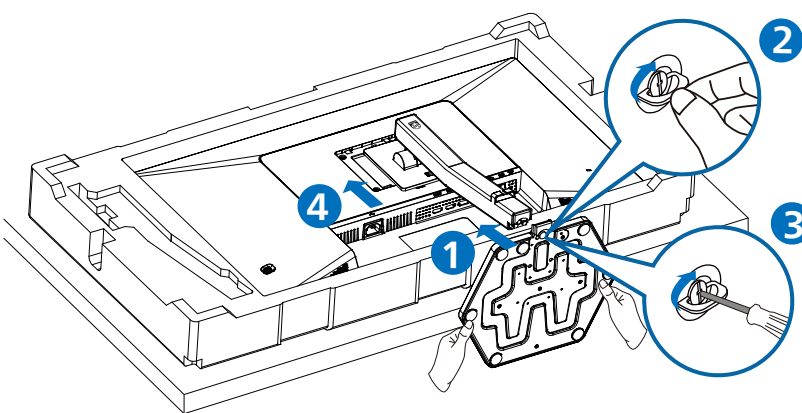
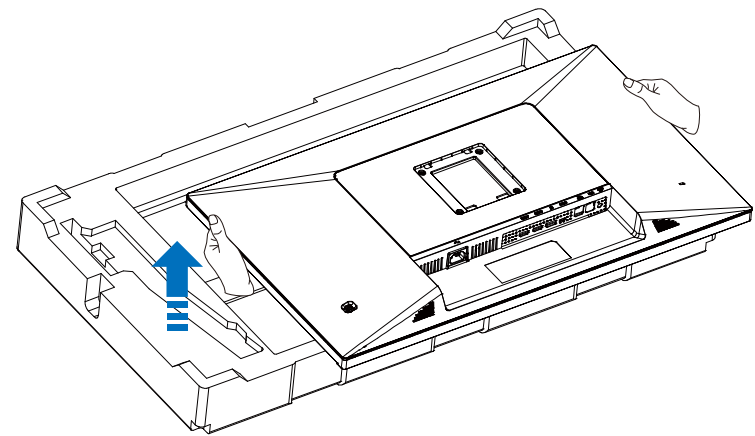


*USB C-C/A

*Different according to region

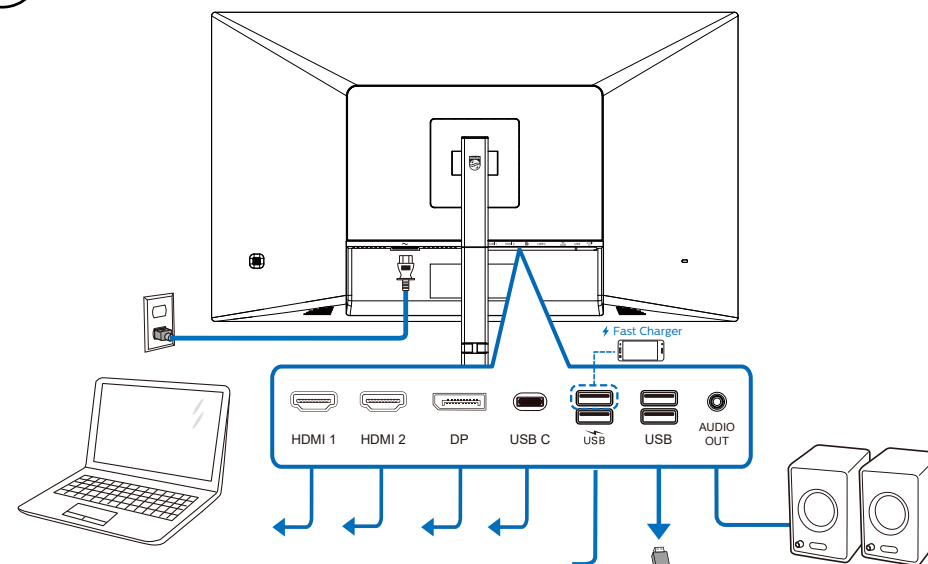
Display design may differ from that illustrated

1

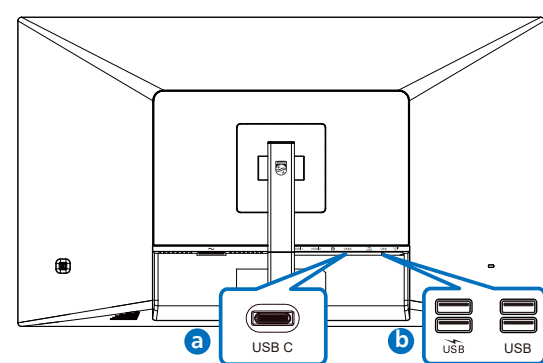
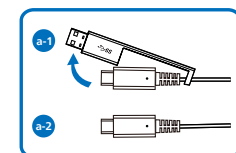


CAUTION: Place the monitor face down on a smooth surface. Pay attention not to scratch or damage the screen.

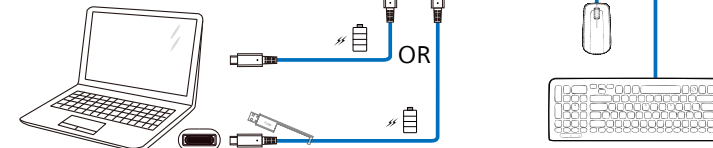
2



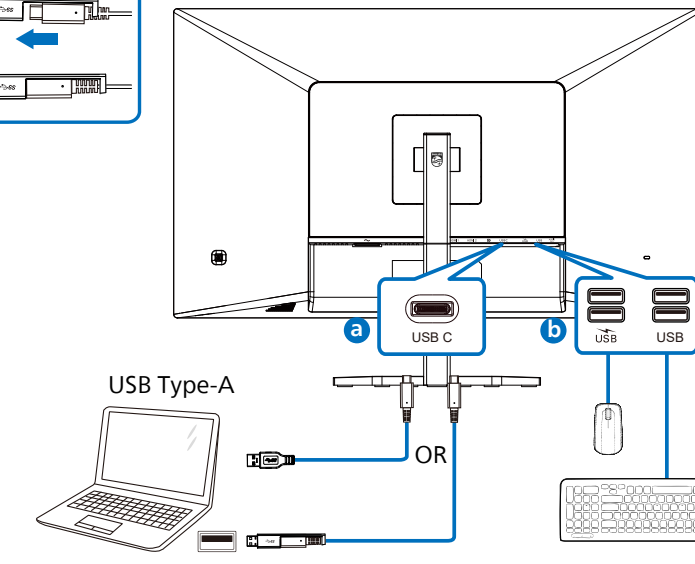
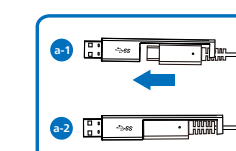
USB C-C



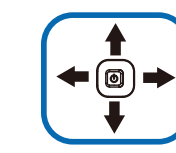
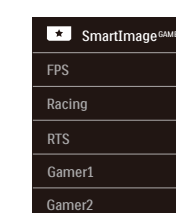
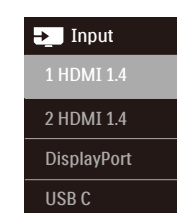
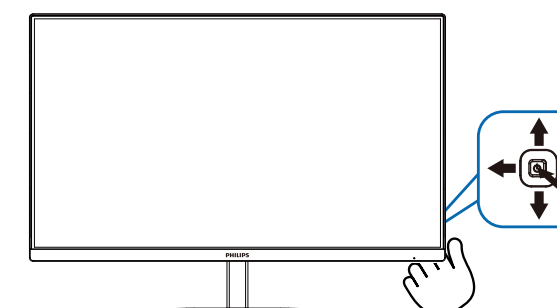
USB Type-C



USB A-C



3



Game Setting	Adaptive Sync	On
MPRT	MPRT Level	Off
MPRT Level	SmartResponse	0
SmartResponse	SmartFrame	Off
SmartFrame		
Input		
Picture		
Audio		
Color		

Game Setting	Adaptive Sync	On
MPRT	MPRT Level	Off
MPRT Level	SmartResponse	0
SmartResponse	SmartFrame	Off
SmartFrame		
Input		
Picture		
Audio		
Color		

Game Setting	Adaptive Sync	On
MPRT	MPRT Level	Off
MPRT Level	SmartResponse	0
SmartResponse	SmartFrame	Off
SmartFrame		
Input		
Picture		
Audio		
Color		

Game Setting	Adaptive Sync	On
MPRT	MPRT Level	Off
MPRT Level	SmartResponse	0
SmartResponse	SmartFrame	Off
SmartFrame		
Input		
Picture		
Audio		
Color		